



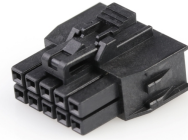
产品编号 : [1053081210](#)

Product Description : Nano-Fit Receptacle Housing, TPA Capable, 2.50mm Pitch, Dual Row, 10 Circuits, Black, Glow-Wire Capable

系列号 : 105308

状态 : Active

Product Category : Connector Housings



文件和资源

图纸

[图纸 1053081210_sd.pdf](#)

[包装设计图 PK-105308-100-000.pdf](#)

3D 模型和设计文件

[3D模型 1053081210_stp.zip](#)

规格

[应用规格 AS-105300-100-001.pdf](#)

[产品规格 1053001000-PS-CH-000.pdf](#)

[产品规格 1053001000-PS-ES-000.pdf](#)

[产品规格 1053001000-PS-JP-000.pdf](#)

[产品规格 1053001000-PS-SK-000.pdf](#)

[产品规格 PS-105300-100-001.pdf](#)

[测试摘要 1053000000-TS-000.pdf](#)

[测试摘要 1053001000-TS-000.pdf](#)

产物环境合规

合规

GADSL/IMDS	Not Relevant
China RoHS	
EU ELV	Not Relevant
Low-Halogen Status	Low-Halogen per IEC 61249-2-21
REACH SVHC	Not Contained per D(2023)8585-DC (23 Jan 2024)
EU RoHS	Compliant per EU 2015/863

多部分产品合规性声明

- Eu RoHS

- REACH SVHC

- Low-Halogen

多部分行业合规性文件

- IPC 1752A Class C

- IPC 1752A Class D

- Molex Product Compliance Declaration

- IEC-62474

- chemSHERPA (xml)

欧盟 RoHS 合格证书

产品详情

常规

状态	活动
类别	Connector Housings
系列	105308
说明	Nano-Fit Receptacle Housing, TPA Capable, 2.50mm Pitch, Dual Row, 10 Circuits, Black, Glow-Wire Capable
应用	Power, Wire-to-Board, Wire-to-Wire
个评论	Operating temperature is -40° to +105° for tin and -40° to +115° for gold
产品系列	Nano-Fit Power Connectors
产品名称	Nano-Fit
UPC	889056023740

机构

CSA	LR19980
UL	E29179

物理

电路数（最多）	10
颜色-树脂	黑色
阻燃性	94V-0
性别	Receptacle
符合灼热丝规范	是

插接极性	是
锁定插接部位	是
材料 - 树脂	Nylon
净重	0.900/g
行数	2
包装形式	Bag
面板安装式	否
间距 - 插配接口	2.50mm
间距 - 终端界面	2.50mm
有极性的插配件	是
运行温度范围	-40° to +105° C, -40° to +115° C

可配插/可连接使用的产品

可配插部件

描述	产品编号
Nano-Fit Vertical Header, Through Hole, 2.50mm Pitch, Dual Row, 10 Circuits, with Kinked Pins, Tin (Sn) Plating, Black, Glow-Wire Capable, Tray	<u>1053101110</u>
Nano-Fit Vertical Header, Through Hole, 2.50mm Pitch, Dual Row, 10 Circuits, with Kinked Pins, 0.38µm Gold (Au) Plating, Black, Glow-Wire Capable, Tray	<u>1053101210</u>
Nano-Fit Vertical Header, Through Hole, 2.50mm Pitch, Dual Row, 10 Circuits, with Kinked Pins, 0.76µm Gold (Au) Plating, Black, Glow-Wire Capable, Tray	<u>1053101310</u>
Nano-Fit Vertical Header, Through Hole, 2.50mm Pitch, Dual Row, 10 Circuits, with Kinked Pins, 0.76µm Gold (Au) Plating, Lubricated, Black, Glow-Wire Capable, Tray	<u>1053101410</u>
Nano-Fit Vertical Header, Through Hole, 2.50mm Pitch, Dual Row, 10 Circuits, with Solder Clips, Tin (Sn) Plating, Black, Glow-Wire Capable, Tray	<u>1053121110</u>

Nano-Fit Vertical Header, Through Hole, 2.50mm Pitch, Dual Row, 10 Circuits, with Solder Clips, 0.38 μ m Gold (Au) Plating, Black, Glow-Wire Capable, Tray	<u>1053121210</u>
Nano-Fit Vertical Header, Through Hole, 2.50mm Pitch, Dual Row, 10 Circuits, with Solder Clips, 0.76 μ m Gold (Au) Plating, Black, Glow-Wire Capable, Tray	<u>1053121310</u>
Nano-Fit Vertical Header, Through Hole, 2.50mm Pitch, Dual Row, 10 Circuits, with Solder Clips, 0.76 μ m Gold (Au) Plating, Lubricated, Black, Glow-Wire Capable, Tray	<u>1053121410</u>
Nano-Fit Right-Angle Header, Through Hole, 2.50mm Pitch, Dual Row, 10 Circuits, Tin (Sn) Plating, Black, Glow-Wire Capable, Tray	<u>1053141110</u>
Nano-Fit Right-Angle Header, Through Hole, 2.50mm Pitch, Dual Row, 10 Circuits, 0.38 μ m Gold (Au) Plating, Black, Glow-Wire Capable, Tray	<u>1053141210</u>
Nano-Fit Right-Angle Header, Through Hole, 2.50mm Pitch, Dual Row, 10 Circuits, 0.76 μ m Gold (Au) Plating, Black, Glow-Wire Capable, Tray	<u>1053141310</u>
Nano-Fit Right-Angle Header, Through Hole, 2.50mm Pitch, Dual Row, 10 Circuits, 0.76 μ m Gold (Au) Plating, Lubricated, Black, Glow-Wire Capable, Tray	<u>1053141410</u>
Nano-Fit Vertical Header, Surface Mount, 2.50mm Pitch, Dual Row, 10 Circuits, 0.76 μ m Tin (Sn) Plating, Black, Glow-Wire Capable	<u>1054291110</u>
Nano-Fit Vertical Header, Surface Mount, 2.50mm Pitch, Dual Row, 10 Circuits, 0.38 μ m Gold (Au) Plating, Black, Glow-Wire Capable	<u>1054291210</u>
Nano-Fit Vertical Header, Surface Mount, 2.50mm Pitch, Dual Row, 10 Circuits, 0.76 μ m Gold (Au) Plating, Black, Glow-Wire Capable	<u>1054291310</u>
Nano-Fit Vertical Header, Surface Mount, 2.50mm Pitch, Dual Row, 10 Circuits, 0.76 μ m Gold (Au) Plating, Lubricated, Black, Glow-Wire Capable	<u>1054291410</u>

Nano-Fit Right-Angle Header, Surface Mount, 2.50mm Pitch, Dual Row, 10 Circuits, 0.76µm Tin (Sn) Plating, Black, Glow-Wire Capable	<u>1054051110</u>
Nano-Fit Right-Angle Header, Surface Mount, 2.50mm Pitch, Dual Row, 10 Circuits, 0.38µm Gold (Au) Plating, Black, Glow-Wire Capable	<u>1054051210</u>
Nano-Fit Right-Angle Header, Surface Mount, 2.50mm Pitch, Dual Row, 10 Circuits, 0.76µm Gold (Au) Plating, Black, Glow-Wire Capable	<u>1054051310</u>
Nano-Fit Plug Housing, TPA Capable, 2.50mm Pitch, Dual Row, 10 Circuits, Black, Glow-Wire Capable	<u>2014441110</u>
Nano-Fit Plug Housing, TPA Capable, 2.50mm Pitch, Dual Row, 10 Circuits, Black, Panel Mount, Glow-Wire Capable	<u>2014441210</u>
Nano-Fit BMI Plug Housing, TPA Capable, 2.50mm Pitch, Dual Row, 10 Circuits, Black, Glow-Wire Capable	<u>2245561110</u>
Nano-Fit BMI Plug Housing, TPA Capable, 2.50mm Pitch, Dual Row, 10 Circuits, Black, Panel Mount, Glow-Wire Capable	<u>2245561210</u>

可连接使用部件

描述	产品编号
Pre-Crimped Lead Nano-Fit Female-to-Nano-Fit Female, Gold (Au) Plating, 150.00mm Length, 20 AWG, Black	<u>/content/molex/molex-dot-com/cn/zh/products/product-page.html/797582129.html</u>
Pre-Crimped Lead Nano-Fit Female-to-Nano-Fit Female, Gold (Au) Plating, 300.00mm Length, 20 AWG, Black	<u>/content/molex/molex-dot-com/cn/zh/products/product-page.html/797582130.html</u>
Pre-Crimped Lead Nano-Fit Female-to-Nano-Fit Female, Matte Tin (Sn) Plating, 150.00mm Length, 20 AWG, Black	<u>/content/molex/molex-dot-com/cn/zh/products/product-page.html/797582139.html</u>
Pre-Crimped Lead Nano-Fit Female-to-Nano-Fit Female, Matte Tin (Sn) Plating, 300.00mm Length, 20 AWG, Black	<u>/content/molex/molex-dot-com/cn/zh/products/product-page.html/797582140.html</u>
Nano-Fit Female Crimp Terminals	<u>105300</u>

Nano-Fit Terminal Position Assurance (TPA) Retainers	<u>105325</u>
--	---------------

施工工具

全局

描述	产品编号
Extraction Tool for Nano-Fit Power Connectors and Crimp Terminals, 20-26 AWG	<u>638244600</u>

This document was generated on Mar 26, 2024