

产品编号 : 1501801016

Product Description : Standard .062"+ Male Terminal, 16-18 AWG, Tin (Sn) Plated, Reel

系列号 : 150180

状态 : Active

Product Category : Crimp Terminals



文件和资源

图纸

图纸 1501801016_sd.pdf

包装设计图 PK-150180-001-000.pdf

规格


应用规格 1501760001-AS-000.pdf

产品规格 1501760001-PS-000.pdf

测试摘要 1501760001-TS-000.pdf

产物环境合规

合规

GADSL/IMDS	Not Relevant
China RoHS	
EU ELV	Not Relevant
Low-Halogen Status	Low-Halogen per IEC 61249-2-21
REACH SVHC	Not Contained per D(2023)3788-DC (14 Jun 2023)
EU RoHS	Compliant per EU 2015/863

多部分产品合规性声明

- Eu RoHS
- REACH SVHC
- Low-Halogen

多部分行业合规性文件

- IPC 1752A Class C
- IPC 1752A Class D
- Molex Product Compliance Declaration
- IEC-62474

产品详情

常规

状态	活动
类别	Crimp Terminals
系列	150180
说明	Standard .062"+ Male Terminal, 16-18 AWG, Tin (Sn) Plated, Reel
应用	Power, Wire-to-Wire
产品系列	Standard .062"+ and Standard .062" Pin and Socket Connector Systems
产品名称	Standard .062"+
UPC	889056490382

电气

每触点最大电流	11.5A
电压 - 最大	400V

物理

耐用性(插拔次数) - 最多次数	25
性别	男
材料 - 金属	Brass
材料 - 接合部位电镀	Tin
材料 - 终端电镀	Tin
净重	0.134/g
包装形式	Reel
最薄镀层 - 接合部位	0.508µm
最薄镀层 - 端接	0.508µm
终端界面类型	Crimp or Compression
导线绝缘直径	1.70-2.10mm
线径规格 (AWG)	16, 18
线缆尺寸mm ²	不适用

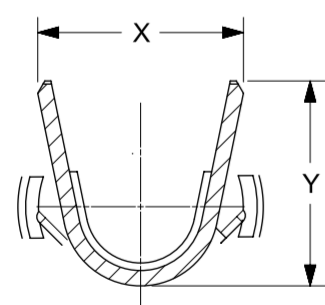
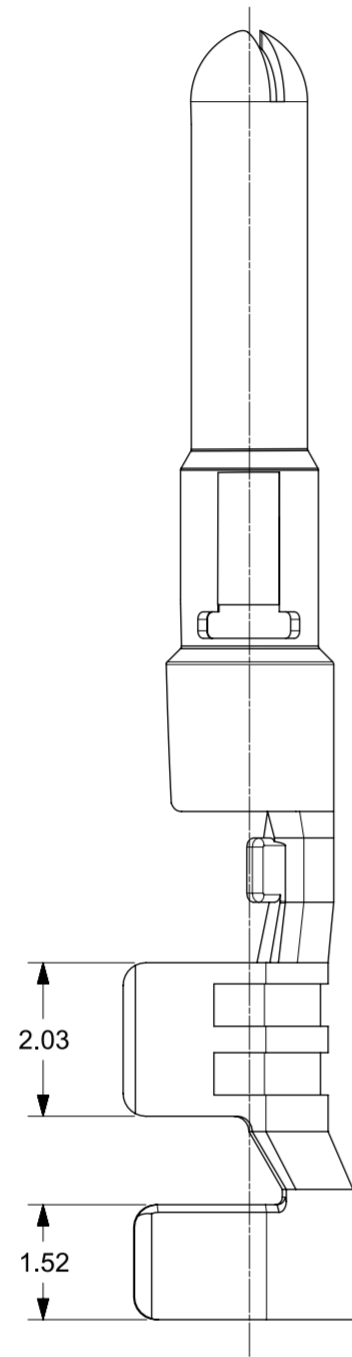
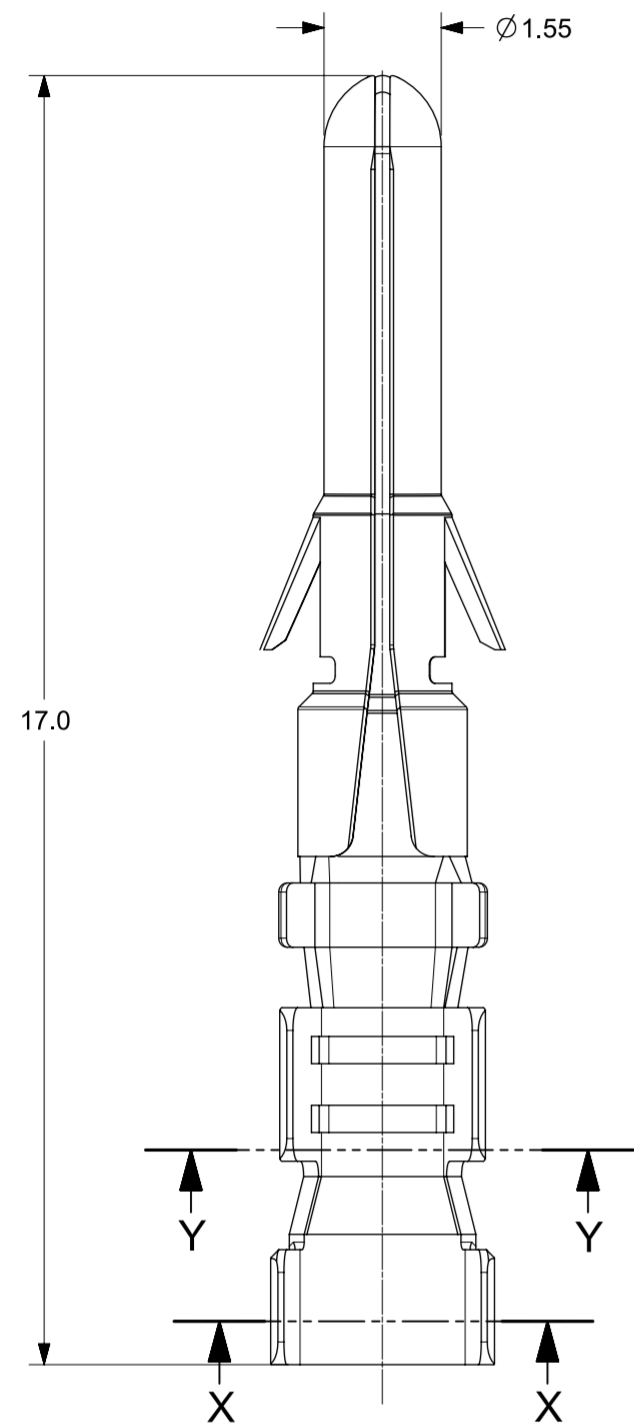
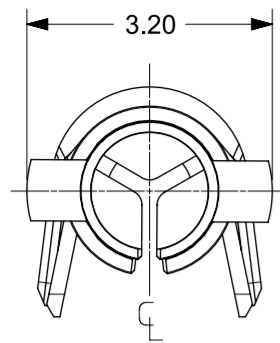
可连接使用部件

描述	产品编号
Standard .062"+ Single Row Plug Housings	<u>150176</u>
Standard .062"+ Dual Row Plug Housings	<u>150177</u>

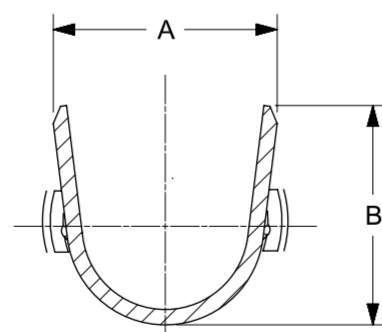
施工工具

全局

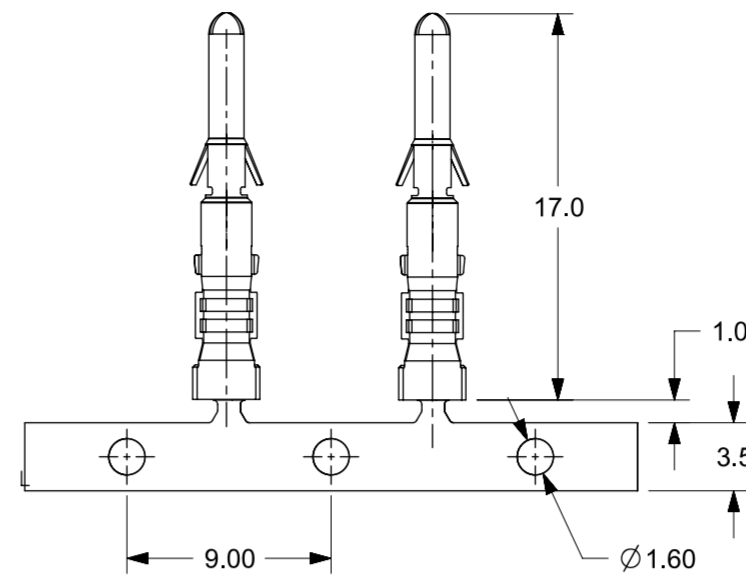
描述	产品编号
Extraction Tool for Standard .062" and Standard .062"+ Pin and Socket Terminals	<u>0011030002</u>
Hand Crimp Tool for EconoLatch Male and Female Terminals, 16-18 AWG UL1061 and 18 AWG UL1007 wires	<u>0638280600</u>
FineAdjust Applicator for EconoLatch Crimp Terminals, 16-18 AWG	<u>0639036100</u>
FineAdjust Applicator for EconoLatch Crimp Terminals, 18 AWG	<u>0639036200</u>



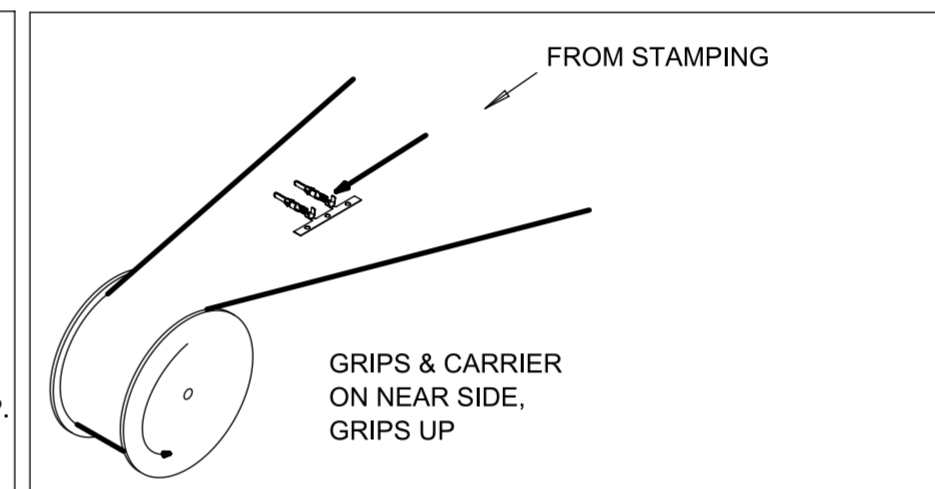
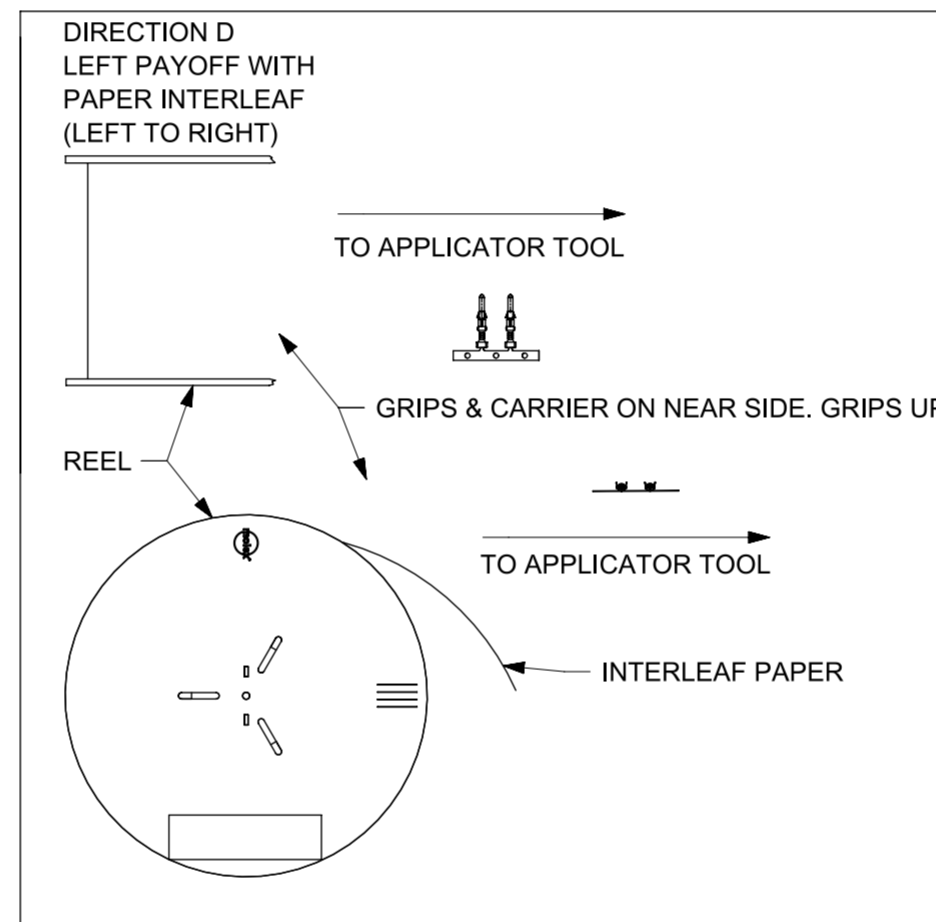
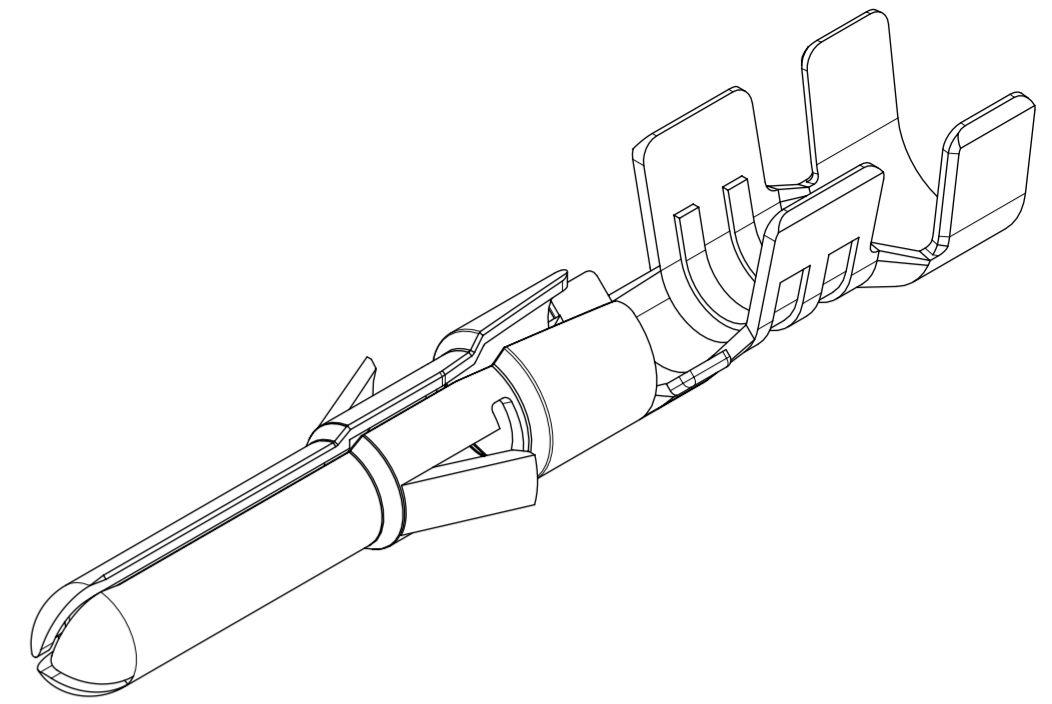
SECTION Y-Y



SECTION X-X



STRIP LAYOUT



REELING DIRECTIONS

SI. No.	PART NUMBER	WIRE RANGE	WIRE STYLE	DIM A	DIM B	DIM X	DIM Y
1	1501801016	16-18 AWG	16 AWG, UL1061	2.96	2.90	2.72	2.71
			18 AWG, UL1007	2.96	2.90	2.72	2.71
			18 AWG, UL1061	2.96	2.90	2.72	2.71
2	1501801020	20-22 AWG	20 AWG, UL1007	2.58	2.40	2.44	2.03
			20 AWG, UL1061	2.58	2.40	2.44	2.03
			22 AWG, UL1007	2.58	2.40	2.44	2.03
			22 AWG, UL1061	2.58	2.40	2.44	2.03

- NOTES:
1. MATERIAL: CARTRIDGE BRASS ALLOY.
 2. FINISH: PREPLATED OVERALL TIN ONLY- BRIGHT FINISH AND MIN THICKNESS 1.5µm.
 3. PRODUCT SPECIFICATION: 1501760001-PS.
 4. PACKAGING SPEC. REFER PK-150180-001.
 5. THIS PART CONFORMS TO CLASS B REQUIREMENTS OF COSMETIC SPEC PS-45499-002.
 6. TERMINAL TO BE USED WITH SERIES 150176 AND 150177.
 7. TERMINAL MATES WITH THE SERIES 150181

THIS DRAWING CONTAINS INFORMATION THAT IS PROPRIETARY TO MOLEX ELECTRONIC TECHNOLOGIES, LLC AND SHOULD NOT BE USED WITHOUT WRITTEN PERMISSION

FUNCTIONAL SYMBOLS: $F_A = 0$, $F_C = 0$, $F_P = 0$

DIVISIONAL SYMBOLS: 4 PLACES ±, 3 PLACES ±, 2 PLACES ± 0.25, 1 PLACE ± 0.35, 0 PLACES ±

SCALE: 10:1

GENERAL TOLERANCES (UNLESS SPECIFIED): ANGULAR TOL ± 0.5°

CURRENT REV DESC: DESCRIPTION UPDATED

EC NO: 647195
 DRWN: PRADEA 2020/10/09
 CHK'D: NCSR 2020/10/19
 APPR: NCSR 2020/10/19

INITIAL REVISION:
 DRWN: SS06 2015/05/28
 APPR: KPRASAD 2015/06/04

THIRD ANGLE PROJECTION

DRAFT WHERE APPLICABLE MUST REMAIN WITHIN DIMENSIONS

DRAWING: A2-SIZE

SERIES: 150180

DOCUMENT NUMBER: SD-150180-0001

CUSTOMER: GENERAL MARKET

DOC TYPE: PSD

DOC PART: 000

REVISION: B1

SHEET NUMBER: 1 OF 1

molex

STANDARD .062"+
MALE CRIMP TERMINAL

PRODUCT CUSTOMER DRAWING