



产品编号：15060105

系列号：42475

Product Category：Connector Housings

Product Description：Mini-Fit BMI Plug Housing, 4.20mm Pitch Dual Row with Panel Mount Ears, PA Polyamide Nylon 6/6, UL 94V-2, 10 Circuits

状态：Active

工程编号：42475-1011

文件和资源

图纸

图纸 015060105_sd.pdf

3D 模型和设计文件

3D模型 015060105_stp.zip

规格

包装规格 PK-42474-001-001.pdf

产品规格 PS-45750-001-001.pdf

产品规格 55560002-PS-CH-000.pdf

产品规格 55560002-PS-ES-000.pdf

产品规格 55560002-PS-SK-000.pdf


产品规格 PS-5556-002-001.pdf

测试摘要 TS-42475-001-001.pdf

测试摘要 TS-5556-002-001.pdf

产物环境合规

合规

GADSL/IMDS	Not Relevant
China RoHS	
EU ELV	Not Relevant
Low-Halogen Status	Low-Halogen per IEC 61249-2-21
REACH SVHC	Not Contained per D(2023)8585-DC (23 Jan 2024)
EU RoHS	Compliant per EU 2015/863

多部分产品合规性声明

- Eu RoHS
- REACH SVHC
- Low-Halogen

- IPC 1752A Class C
- IPC 1752A Class D
- Molex Product Compliance Declaration
- IEC-62474
- chemSHERPA (xml)

欧盟 RoHS 合格证书

产品详情

常规

状态	活动
类别	Connector Housings
系列	42475
说明	Mini-Fit BMI Plug Housing, 4.20mm Pitch Dual Row with Panel Mount Ears, PA Polyamide Nylon 6/6, UL 94V-2, 10 Circuits
应用	Power, Wire-to-Board, Wire-to-Wire
个评论	Current = 13A max. per circuit when header is mated to a receptacle loaded with 45750 series terminals crimped to 16 AWG wire. See Molex product specification PS-45750-001 for additional current derating information.
产品系列	Mini-Fit Family Power Connectors
产品名称	Mini-Fit BMI
UPC	800755528244

机构

CSA	LR19980
UL	E29179

物理

电路数（最多）	10
颜色-树脂	Natural
阻燃性	94V-2
性别	Plug
符合灼热丝规范	否

锁定插接部位	是
材料 - 树脂	Nylon
净重	4. 400/g
行数	2
包装形式	Bag
面板安装式	是
间距 - 插配接口	4. 20mm
间距 - 终端界面	4. 20mm
有极性的插配件	是
可堆叠的	否
运行温度范围	-40° to +105° C

进程

无铅	不适用
----	-----

可配插/可连接使用的产品

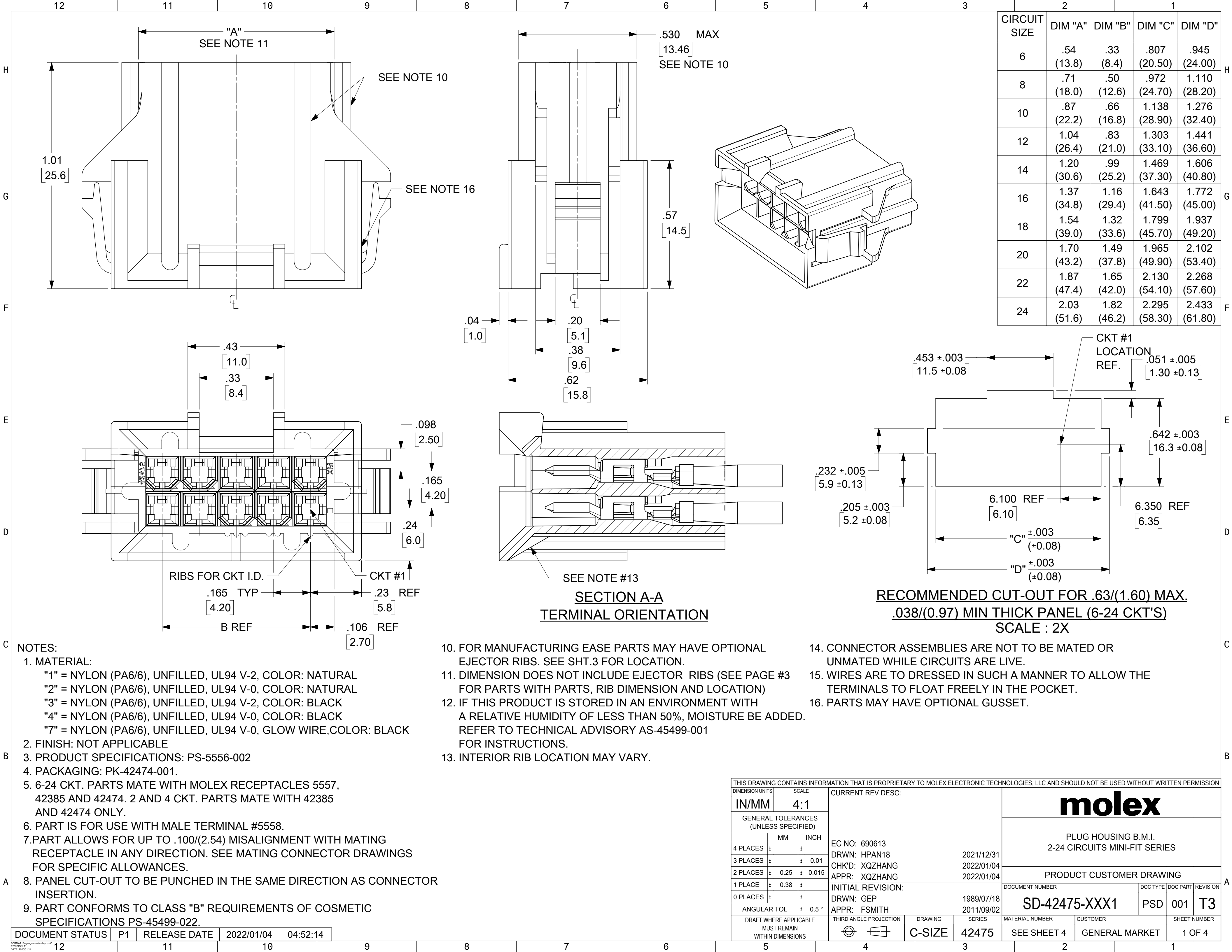
可配插部件

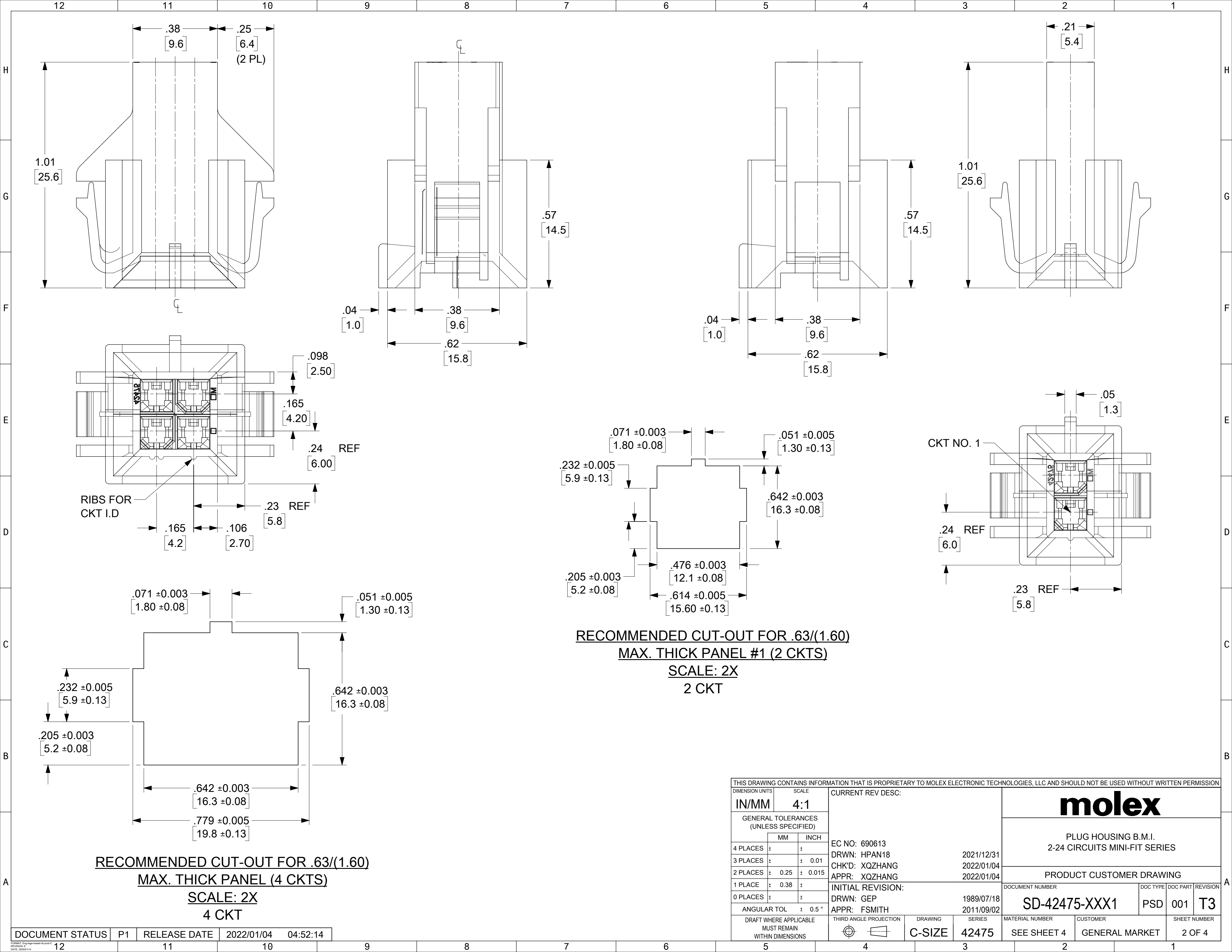
描述	产品编号
Mini-Fit BMI Receptacle Housing, 4.20mm Pitch, Dual Row with Panel Mount Ears, PA Polyamide Nylon 6/6, UL 94V-2, 10 Circuits	<u>15060100</u>
Mini-Fit Jr. Receptacle Housing, Dual Row, 10 Circuits, UL 94V-2, Natural	<u>39012100</u>
Mini-Fit HCS Receptacle Header, 4.20mm Pitch, Dual Row, Vertical, Blind Mating, with Snap-in Plastic Pegs, 10 Circuits	<u>444751011</u>
Mini-Fit BMI Vertical Dual Row Receptacle Headers	<u>42385</u>

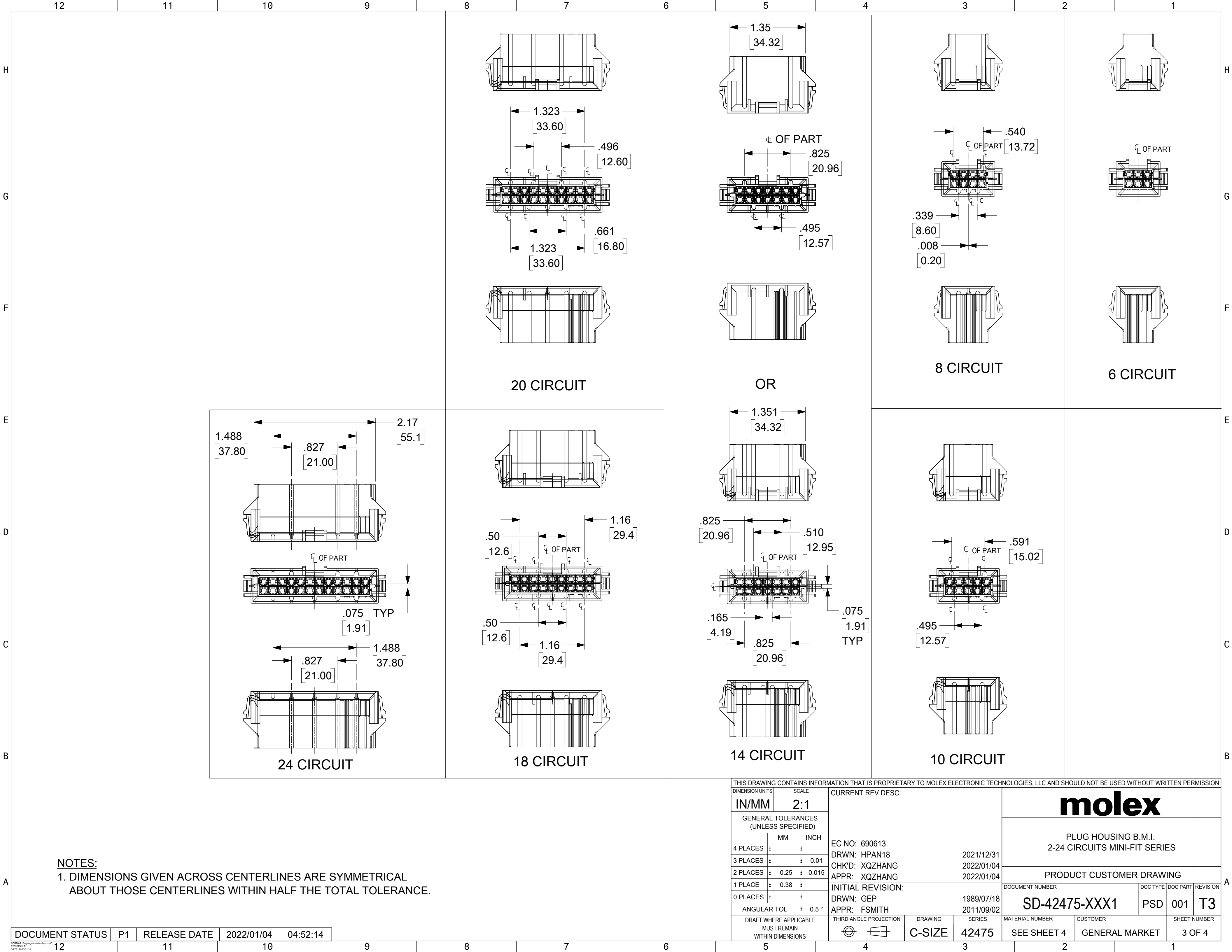
可连接使用部件

描述	产品编号
Pre-Crimped Lead Mini-Fit Male-to-Mini-Fit Male, Tin (Sn) Plating, 150.00mm Length, 18 AWG, Red	<u>/content/molex/molex-dot-com/cn/zh/products/product-page.html/797580005.html</u>

Pre-Crimped Lead Mini-Fit Male-to-Mini-Fit Male, Tin (Sn) Plating, 300.00mm Length, 18 AWG, Red	/content/molex/molex-dot-com/cn/zh/products/product-page.html/797580013.html
Mini-Fit Male Crimp Terminals	5558
Mini-Fit Plus Male Crimp Terminals	46012







NOTES:
1. DIMENSIONS GIVEN ACROSS CENTERLINES ARE SYMMETRICAL ABOUT THOSE CENTERLINES WITHIN HALF THE TOTAL TOLERANCE.

DOCUMENT STATUS	P1	RELEASE DATE	2022/01/04	04:52:14
-----------------	----	--------------	------------	----------

FORMATT: Eng-High-Master-to-print-C
REVISION: E
DATE: 2022/01/14

12

11

10

9

8

7

6


5

4

3

2

1

THIS DRAWING CONTAINS INFORMATION THAT IS PROPRIETARY TO MOLEX ELECTRONIC TECHNOLOGIES, LLC AND SHOULD NOT BE USED WITHOUT WRITTEN PERMISSION										
DIMENSION UNITS		SCALE		CURRENT REV DESC:				<div>molex</div>		
IN/MM		2:1								
GENERAL TOLERANCES (UNLESS SPECIFIED)				PLUG HOUSING B.M.I. 2-24 CIRCUITS MINI-FIT SERIES						
		MM	INCH							
4 PLACES	±		±	EC NO: 690613 DRWN: HPAN18 CHK'D: XQZHANG APPR: XQZHANG 2021/12/31 2022/01/04 2022/01/04				PRODUCT CUSTOMER DRAWING		
3 PLACES	±		± 0.01							
2 PLACES	±	0.25	± 0.015	INITIAL REVISION: DRWN: GEP APPR: FSMITH 1989/07/18 2011/09/02				DOCUMENT NUMBER SD-42475-XXX1		
1 PLACE	±	0.38	±							
0 PLACES	±		±	DOC TYPE PSD				DOC PART 001		
ANGULAR TOL ± 0.5 °										
DRAFT WHERE APPLICABLE MUST REMAIN WITHIN DIMENSIONS				THIRD ANGLE PROJECTION 		DRAWING C-SIZE	SERIES 42475	MATERIAL NUMBER SEE SHEET 4	CUSTOMER GENERAL MARKET	SHEET NUMBER 3 OF 4

molex

PLUG HOUSING B.M.I.
2-24 CIRCUITS MINI-FIT SERIES

PRODUCT CUSTOMER DRAWING

DOC PART
001

REVISION
T3

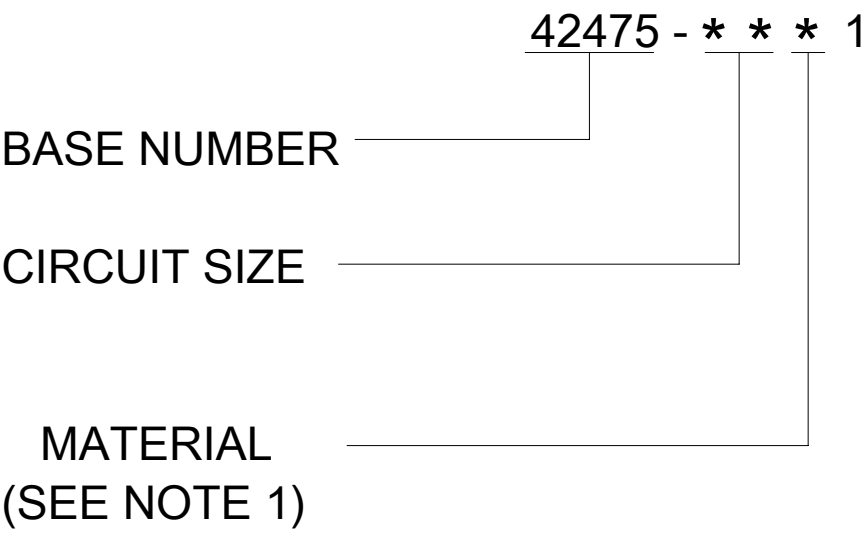
PART NUMBER		ENG. NUMBER	CKT SIZE	MATERIAL (SEE NOTE 1)
	NOT TOOLED	42475-0211	2	1
	15-06-0045	42475-0411	4	▲
	15-06-0065	42475-0611	6	
	15-06-0085	42475-0811	8	
	15-06-0105	42475-1011	10	
	NOT TOOLED	42475-1211	12	
	15-06-0145	42475-1411	14	
	NOT TOOLED	42475-1611	16	
	15-06-0185	42475-1811	18	
O	15-06-0205	42475-2011	20	
	NOT TOOLED	42475-2211	22	▼
	15-06-0245	42475-2411	24	1
	NOT TOOLED	42475-0221	2	2
	15-06-0046	42475-0421	4	▲
	15-06-0066	42475-0621	6	
	50-36-2323	42475-0821	8	
	15-06-0106	42475-1021	10	
	NOT TOOLED	42475-1221	12	
	15-06-0146	42475-1421	14	
	NOT TOOLED	42475-1621	16	
	15-06-0186	42475-1821	18	
O	15-06-0206	42475-2021	20	
	NOT TOOLED	42475-2221	22	▼
	15-06-0246	42475-2421	24	2
	42475-1071	42475-1071	10	7

PART NUMBER		CKT SIZE	MATERIAL (SEE NOTE 1)
	NOT TOOLED	2	3
	42475-0431	4	▲
	42475-0631	6	
	42475-0831	8	
	42475-1031	10	
	NOT TOOLED	12	
	42475-1431	14	
	NOT TOOLED	16	
	42475-1831	18	
O	42475-2031	20	
	NOT TOOLED	22	▼
	42475-2431	24	3
	NOT TOOLED	2	4
	42475-0441	4	▲
	42475-0641	6	
	42475-0841	8	
	42475-1041	10	
	NOT TOOLED	12	
	42475-1441	14	
	NOT TOOLED	16	
	42475-1841	18	
O	42475-2041	20	
	NOT TOOLED	22	▼
	42475-2441	24	4

O = OBSOLETE

O = OBSOLETE

LEGEND:



THIS DRAWING CONTAINS INFORMATION THAT IS PROPRIETARY TO MOLEX ELECTRONIC TECHNOLOGIES, LLC AND SHOULD NOT BE USED WITHOUT WRITTEN PERMISSION

DIMENSION UNITS

IN/MM

SCALE

1:1

GENERAL TOLERANCES
(UNLESS SPECIFIED)

	MM	INCH
4 PLACES	±	±
3 PLACES	±	± 0.01
2 PLACES	± 0.25	± 0.015
1 PLACE	± 0.38	±
0 PLACES	±	±
ANGULAR TOL	± 0.5 °	
DRAFT WHERE APPLICABLE MUST REMAIN WITHIN DIMENSIONS		

CURRENT REV DESC:

EC NO: 690613
DRWN: HPAN18
CHK'D: XQZHANG
APPR: XQZHANG

2021/12/31
2022/01/04
2022/01/04

INITIAL REVISION:
DRWN: GEP
APPR: FSMITH

1989/07/18
2011/09/02

THIRD ANGLE PROJECTION

DRAWING

C-SIZE

SERIES

42475

DOCUMENT NUMBER

SD-42475-XXX1

CUSTOMER

GENERAL MARKET

SHEET NUMBER

4 OF 4

DOC TYPE

PSD

DOC PART

001

REVISION

T3

PLUG HOUSING B.M.I.
2-24 CIRCUITS MINI-FIT SERIES

PRODUCT CUSTOMER DRAWING

molex

2022/01/04

DOCUMENT STATUS	P1	RELEASE DATE	2022/01/04	04:52:14
-----------------	----	--------------	------------	----------

12

11

10

9

8

7

6

5

4

3

2

1

FORMATT: Eng-High Resolution 30 pin x 1 C

REVISION: E

DATE: 2022/01/14