

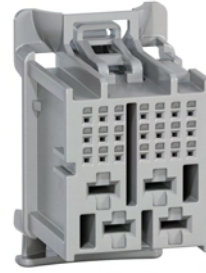
产品编号 : [1600270012](#)

Product Description : stAK50h Hybrid  
Receptacle, 25 Circuits, Key 2, Rib Option  
A, Stone Gray, Bag

系列号 : 160027

状态 : Active

Product Category : Connector Housings



## 文件和资源

### 图纸

[图纸 1600270012\\_sd.pdf](#)

### 3D 模型和设计文件

[3D模型 1600270012\\_stp.zip](#)


### 规格

[应用规格 AS-160014-001-001.pdf](#)

[测试摘要 1600140000-TS-000.pdf](#)

## 产物环境合规

### 合规

|                    |   |
|--------------------|---|
| GADSL/IMDS         | Compliant   |
| China RoHS         |  |
| EU ELV             | Compliant per 2000/53/EC  |
| Low-Halogen Status | Low-Halogen per IEC 61249-2-21  |
| REACH SVHC         | Not Contained per D(2023)3788-DC<br>(14 Jun 2023)                                     |
| EU RoHS            | Compliant per EU 2015/863   |

### 多部分产品合规性声明

- Eu RoHS
- REACH SVHC
- Low-Halogen

### 多部分行业合规性文件

- IPC 1752A Class C
- IPC 1752A Class D

- Molex Product Compliance Declaration

- IEC-62474

- chemSHERPA (xml)

欧盟 RoHS 合格证书

---

## 产品详情

### 常规

|      |  |
|------|--|
| 状态   | 活动   |
| 类别   | Connector Housings   |
| 系列   | 160027   |
| 说明   | stAK50h Hybrid Receptacle, 25 Circuits, Key 2, Rib Option A, Stone Gray, Bag |
| 应用   | Automotive, Power, Signal, Wire-to-Board                                     |
| 产品系列 | stAK50h Connection System  |
| 产品名称 | stAK50h  |
| UPC  | 193264073504   |

### 物理

|           |                        |
|-----------|------------------------|
| 电路数（最多）   | 25                     |
| 颜色-树脂     | Stone Gray             |
| 性别        | Receptacle             |
| 符合灼热丝规范   | 否                      |
| 插接极性      | 是                      |
| 锁定插接部位    | 是                      |
| 材料 - 树脂   | SPS                    |
| 净重        | 5.774/g                |
| 行数        | 5                      |
| 包装形式      | Bag                    |
| 面板安装式     | 否                      |
| 间距 - 插配接口 | 2.00mm, 3.20mm, 7.20mm |
| 间距 - 终端界面 | 2.00mm, 3.20mm, 7.20mm |
| 有极性的插配件   | 是                      |
| 端口        | 1                      |
| 可堆叠的      | 否                      |

|        |   |
|--------|---|
| 运行温度范围 | -40° to +105° C LV-214, -40° to +85° C GMW3191 June2012 |
|--------|---|

---

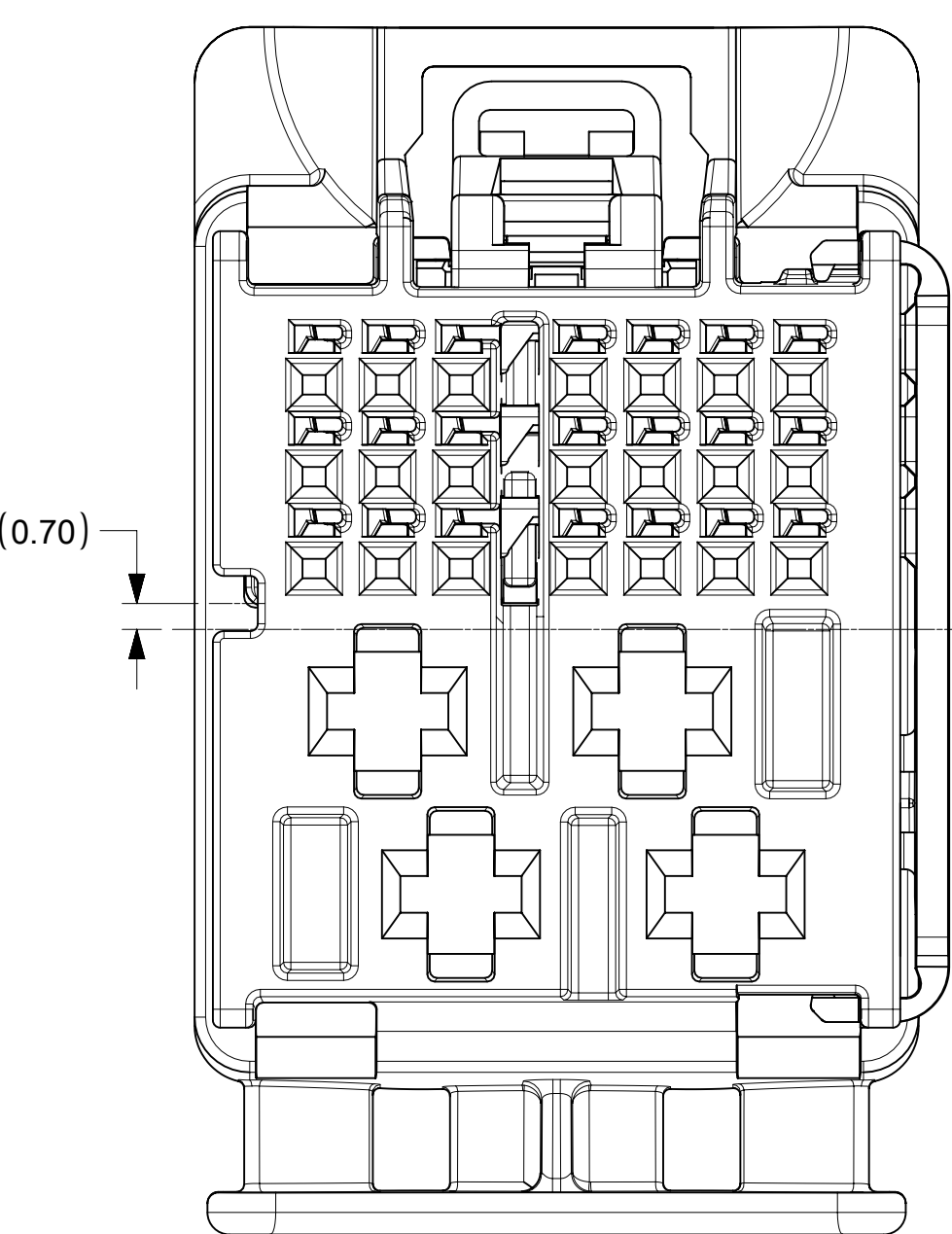
## 可配插/可连接使用的产品

### 可配插部件

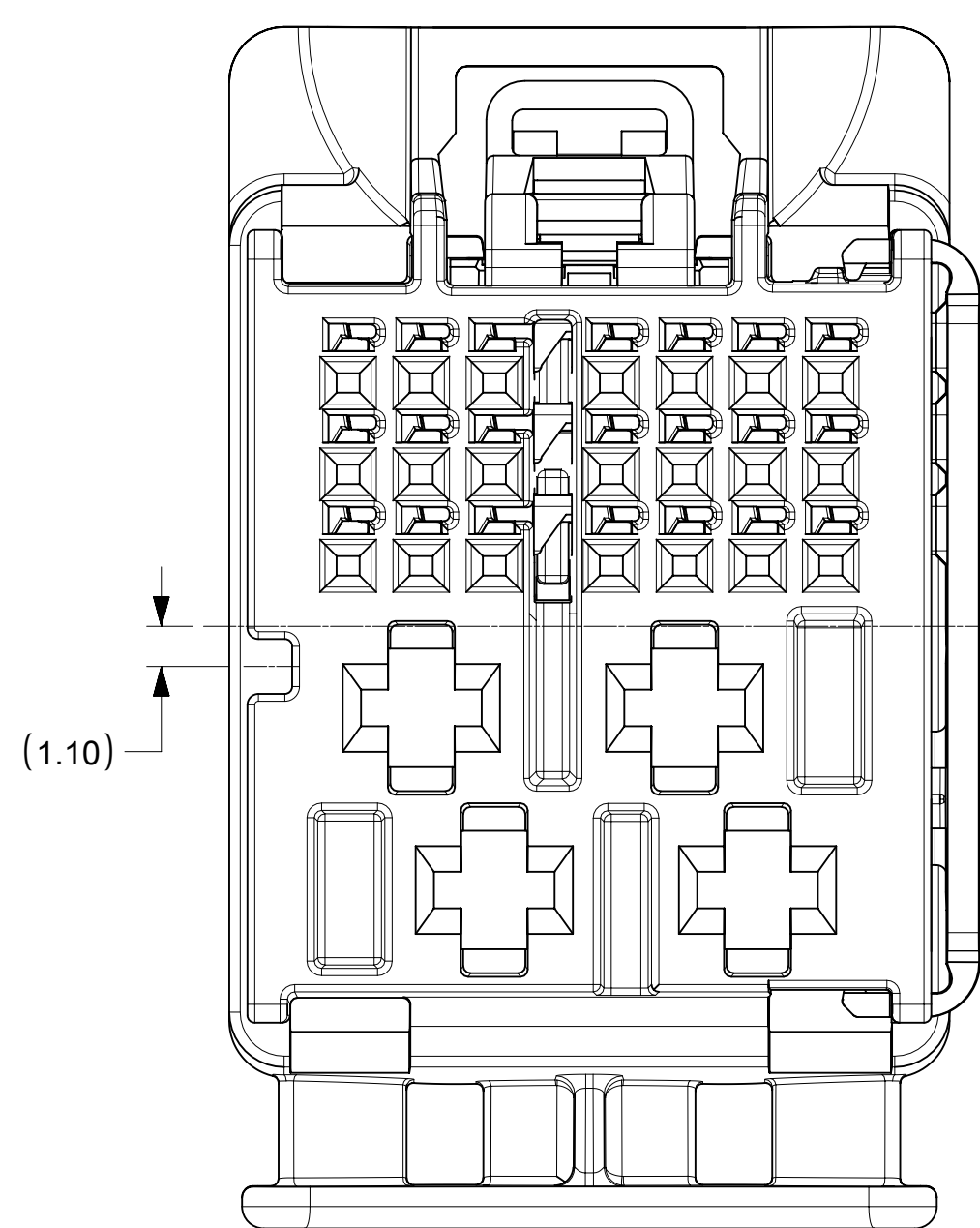
| 描述  | 产品编号              |
|---|-------------------|
| stAK50h Vertical Hybrid Header, 25 Circuits, Key 2, Gray, Tube    | <u>2005010252</u> |
| stAK50h Right-Angle Hybrid Header, 25 Circuits, Key 2, Gray, Tube | <u>2005020252</u> |

### 可连接使用部件

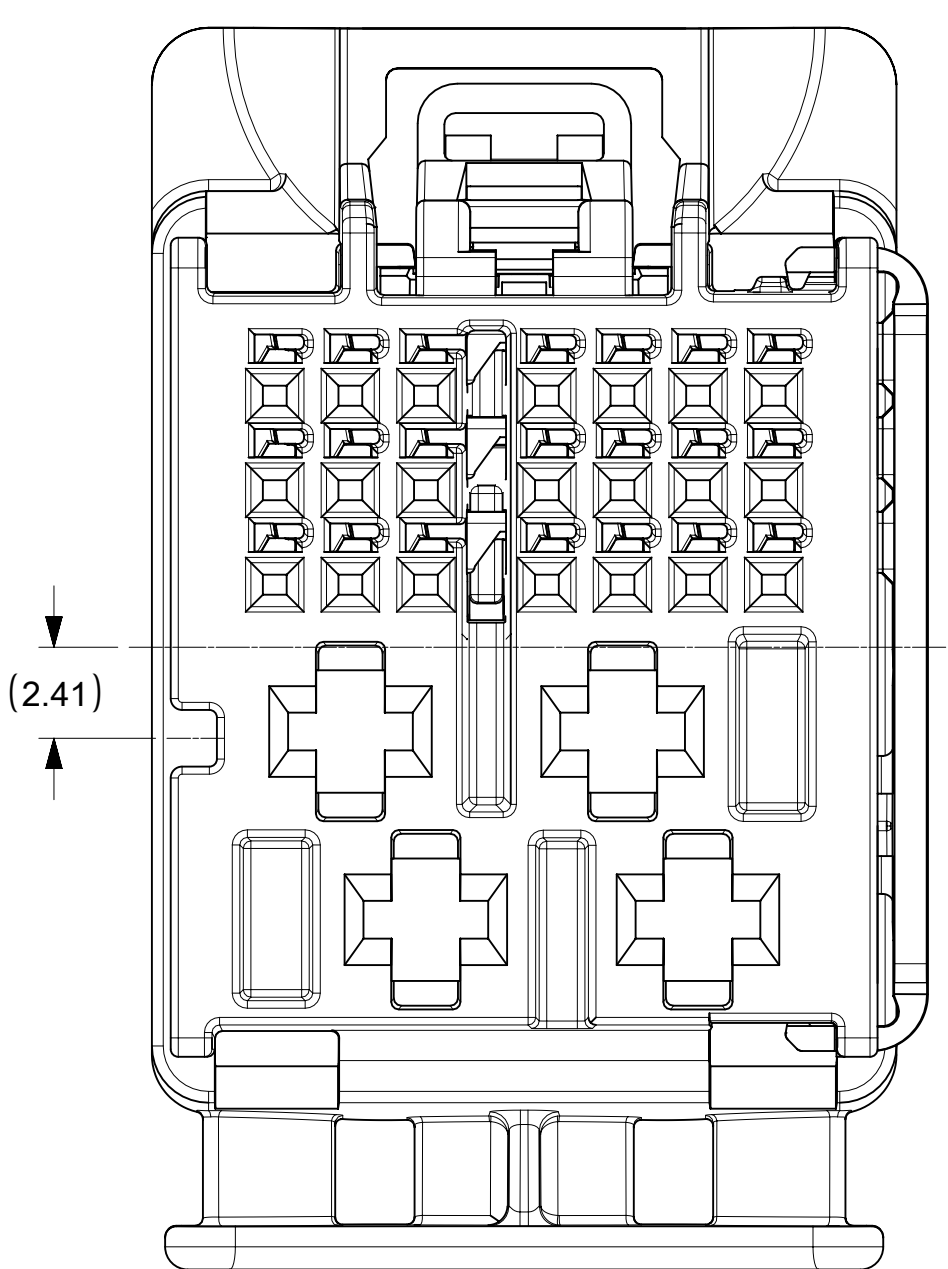
| 描述                                  | 产品编号  |
|-------------------------------------|---|
| TAK50 Unsealed Receptacle Terminals | <u>200096</u>   |
| 可装的端子等部件                            | TE AMP MPC 2.80mm Terminal or Aptiv CTS 2.80mm Terminal |



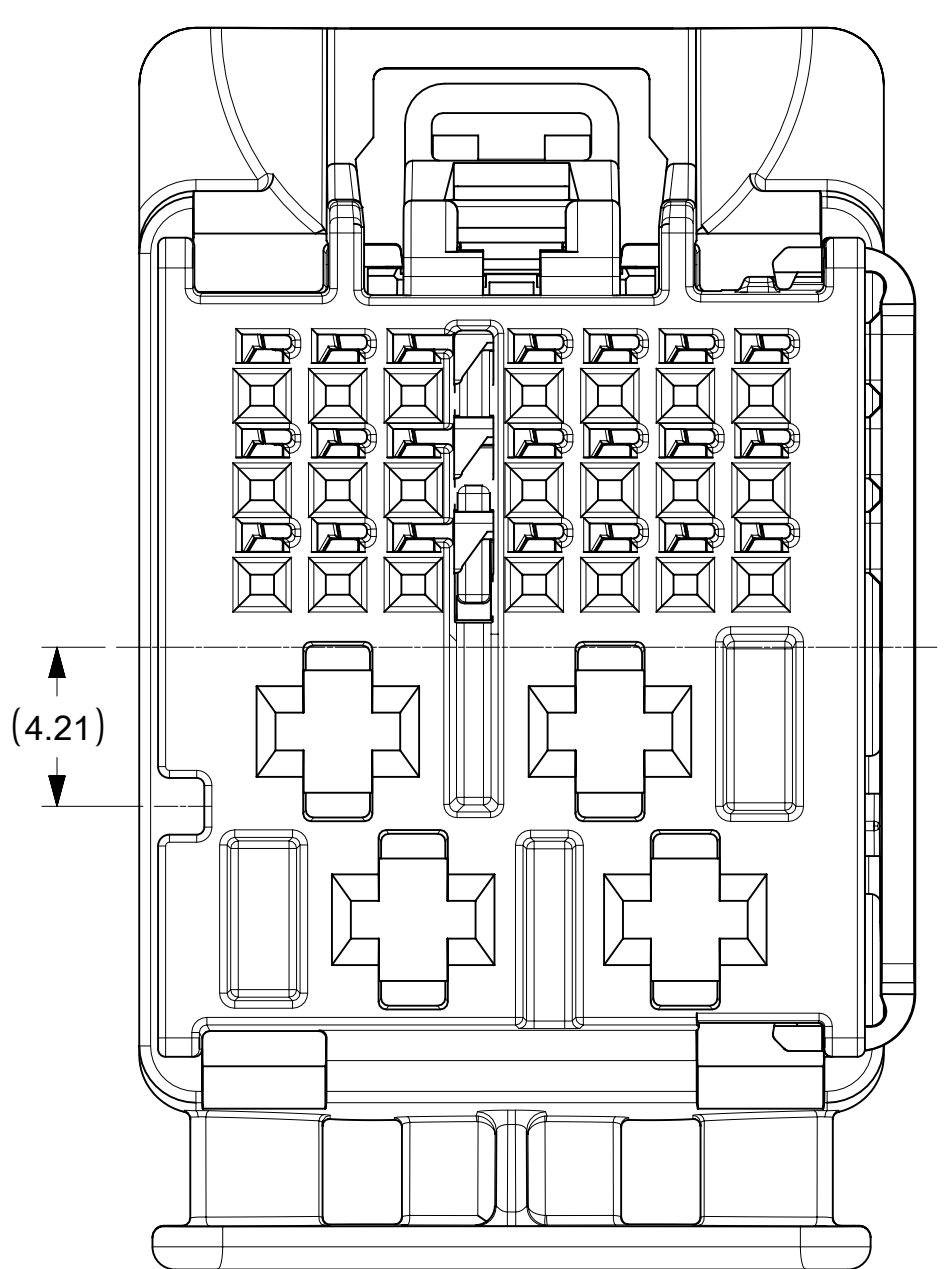
25 WAY CONNECTOR ASSEMBLY  
KEY 1 & KEY 5



25 WAY CONNECTOR ASSEMBLY  
KEY 2 & KEY 6



25 WAY CONNECTOR ASSEMBLY  
KEY 3 & KEY 7



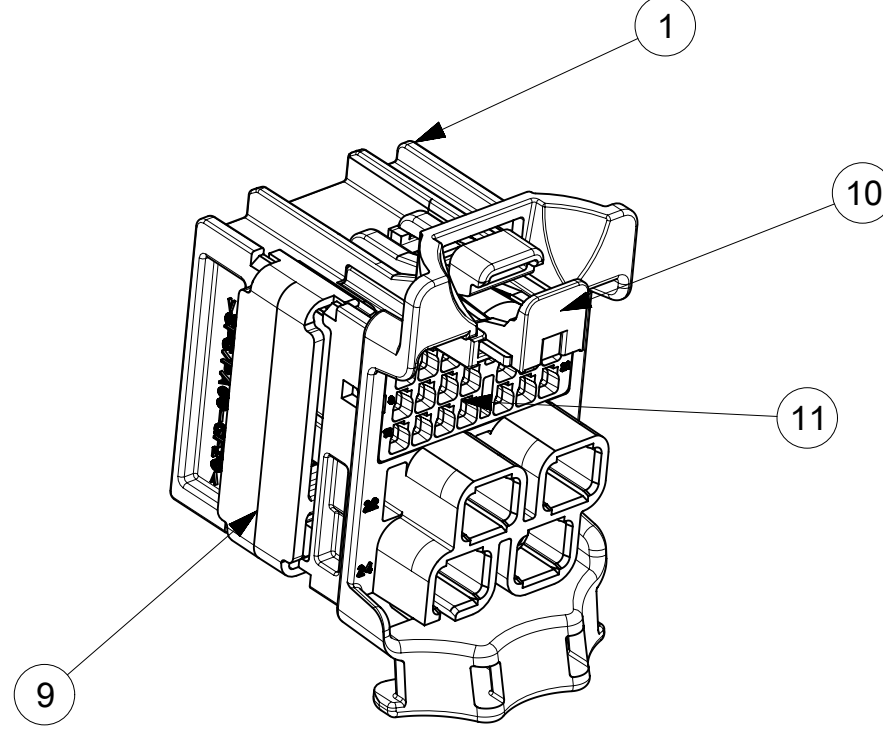
25 WAY CONNECTOR ASSEMBLY  
KEY 4 & KEY 8

- NOTES: VALID UNLESS OTHERWISE SPECIFIED
- GENERAL:
    - APPLICATION SPECIFICATION SEE: AS-160014-001
    - PRODUCT SPECIFICATION SEE: PS-160014-001
    - PACKAGING SPECIFICATION PER MOLEX DRAWING: PK-31302-266
    - PARTS MUST BE IN COMPLIANCE TO MOLEX CHEMICAL SUBSTANCES FOR PRODUCTS AND PACKAGING SPECIFICATION: ES-40000-5016
    - DATA MUST BE SUBMITTED UNDER THE MOLEX PART NUMBER TO IMDS (COMPANY ID#13255)
  - DESIGN - MATERIALS:
    - SEE BOM TABLE
  - DESIGN - GEOMETRY:
    - ALL GRAPHIC DATA IS BASIC (NO TOLERANCE) AND MUST BE TAKEN FROM THE DATA FILE AT ITS LATEST REVISION.
    - PRODUCT DESIGN MODEL NUMBER(S): SEE BOM TABLE
    - GEOMETRIC DIMENSIONS AND TOLERANCES PER ASME Y14.5-2009
    - EDGES AND UNDIMENSIONED DETAILS PER ISO13715
    - CORNERS SHOWN AS SHARP TO BE R 0.2 MAX.
    - MARKED TEXT TO INCLUDE RECYCLING CODE, CAVITY ID, VENDOR IDENTIFICATION AND CUSTOMER MATERIAL NUMBER.
      - LASER ETCHED DATE CODE
        - 1ST THROUGH 2ND DIGIT = CALENDAR YEAR
        - 3RD THROUGH 5TH DIGIT = "DAY #" OF YEAR
        - 6TH THROUGH 7TH DIGIT = HOUR OF DAY
        - 8TH THROUGH 9TH DIGIT = MINUTE OF HOUR
        - 10TH THROUGH 11TH DIGIT = SECOND OF MINUTE
  - DESIGN - MANUFACTURING:
    - VISUAL DEFECTS SHALL MEET COSMETIC STANDARD PS-45499-002 (Class B)

| PART NUMBER | PLATING     | SUPPLIER | WIRE GAGE (mm2) | TERMINAL FAMILY                     | WIRE SPECIFICATION   |
|-------------|-------------|----------|-----------------|-------------------------------------|--|
| 200096-3101 | TIN PLATING | MOLEX    | 0.35            | TAK FAMILY (0.5 mm)                 | VW 60306 OR GMW 15626 (SEE APPLICATION SPECIFICATION FOR MORE DETAILS) |
| 200096-3201 | TIN PLATING | MOLEX    | 0.13            | TAK FAMILY (0.5 mm)                 |  |
| 2272196-2   | TIN PLATING | TE       | 0.35            | Generation 50 Locking Lance (0.5mm) | SAE/ J1128 THIN WALL INSULATION  |
| 2272196-1   | TIN PLATING | TE       | 0.13            | Generation 50 Locking Lance (0.5mm) |  |
| 1-968851-1  | TIN PLATING | TE       | 1.0 - 2.5       | AMP MCP 2.8                         | GMW 15626 INSULATION TYPE FLR (REGULAR THIN WALL)                      |
| 1-968849-1  | TIN PLATING | TE       | 0.5 - 1.0       | AMP MCP 2.8                         |  |
| 15457849    | TIN PLATING | DELPHI   | 1.5 - 2.5       | CTS 2.8mm                           |  |
| 15457848    | TIN PLATING | DELPHI   | 0.5 - 1.0       | CTS 2.8mm                           |  |

| ITEM | DESCRIPTION          | COLOR         | RECYCLING CODE | WEIGHT (GRAMS) | RIB OPTION | NO OF ITEMS REQUIRED |   |   |   |   |   |   |   |   |   |   |   |   |   |   |   |
|------|----------------------|---------------|----------------|----------------|------------|----------------------|---|---|---|---|---|---|---|---|---|---|---|---|---|---|---|
| 1    | OUTER SHROUD - KEY 1 | LIGHT GREEN B | SPS/PA66-GF20  | 4.1            | A          | 1                    |   |   |   |   |   |   |   |   |   |   |   |   |   |   |   |
| 2    | OUTER SHROUD - KEY 2 | STONE GRAY    | SPS/PA66-GF20  | 4.1            | A          |                      | 1 |   |   |   |   |   |   |   |   |   |   |   |   |   |   |
| 3    | OUTER SHROUD - KEY 3 | BLACK         | SPS/PA66-GF20  | 4.1            | A          |                      |   | 1 |   |   |   |   |   |   |   |   |   |   |   |   |   |
| 4    | OUTER SHROUD - KEY 4 | DARK GRAY     | SPS/PA66-GF20  | 4.1            | A          |                      |   |   | 1 |   |   |   |   |   |   |   |   |   |   |   |   |
| 5    | OUTER SHROUD - KEY 5 | DK PURPLE A   | SPS/PA66-GF20  | 4.1            | B          |                      |   |   |   | 1 |   |   |   |   |   |   |   |   |   |   |   |
| 6    | OUTER SHROUD - KEY 6 | TBD           | SPS/PA66-GF20  | 4.1            | B          |                      |   |   |   |   | 1 |   |   |   |   |   |   |   |   |   |   |
| 7    | OUTER SHROUD - KEY 7 | TBD           | SPS/PA66-GF20  | 4.1            | B          |                      |   |   |   |   |   | 1 |   |   |   |   |   |   |   |   |   |
| 8    | OUTER SHROUD - KEY 8 | LT GRAY       | SPS/PA66-GF20  | 4.1            | B          |                      |   |   |   |   |   |   | 1 |   |   |   |   |   |   |   |   |
| 9    | ISL                  | NATURAL       | SPS-GF30       | 0.37           | N/A        | 1                    | 1 | 1 | 1 | 1 | 1 | 1 | 1 | 1 | 1 | 1 | 1 | 1 | 1 | 1 | 1 |
| 10   | CPA                  | NATURAL       | PA66-GF50      | 0.08           | N/A        | 1                    | 1 | 1 | 1 | 1 | 1 | 1 | 1 | 1 | 1 | 1 | 1 | 1 | 1 | 1 | 1 |
| 11   | INNER HOUSING        | STONE GRAY    | SPS/PA66-GF20  | 1.04           | N/A        | 1                    | 1 | 1 | 1 |   |   |   |   |   |   |   |   |   |   |   |   |
| 12   | INNER HOUSING        | STONE GRAY    | SPS/PA66-GF20  | 1.04           | N/A        |                      |   |   |   |   |   | 1 | 1 | 1 | 1 | 1 | 1 | 1 | 1 | 1 | 1 |

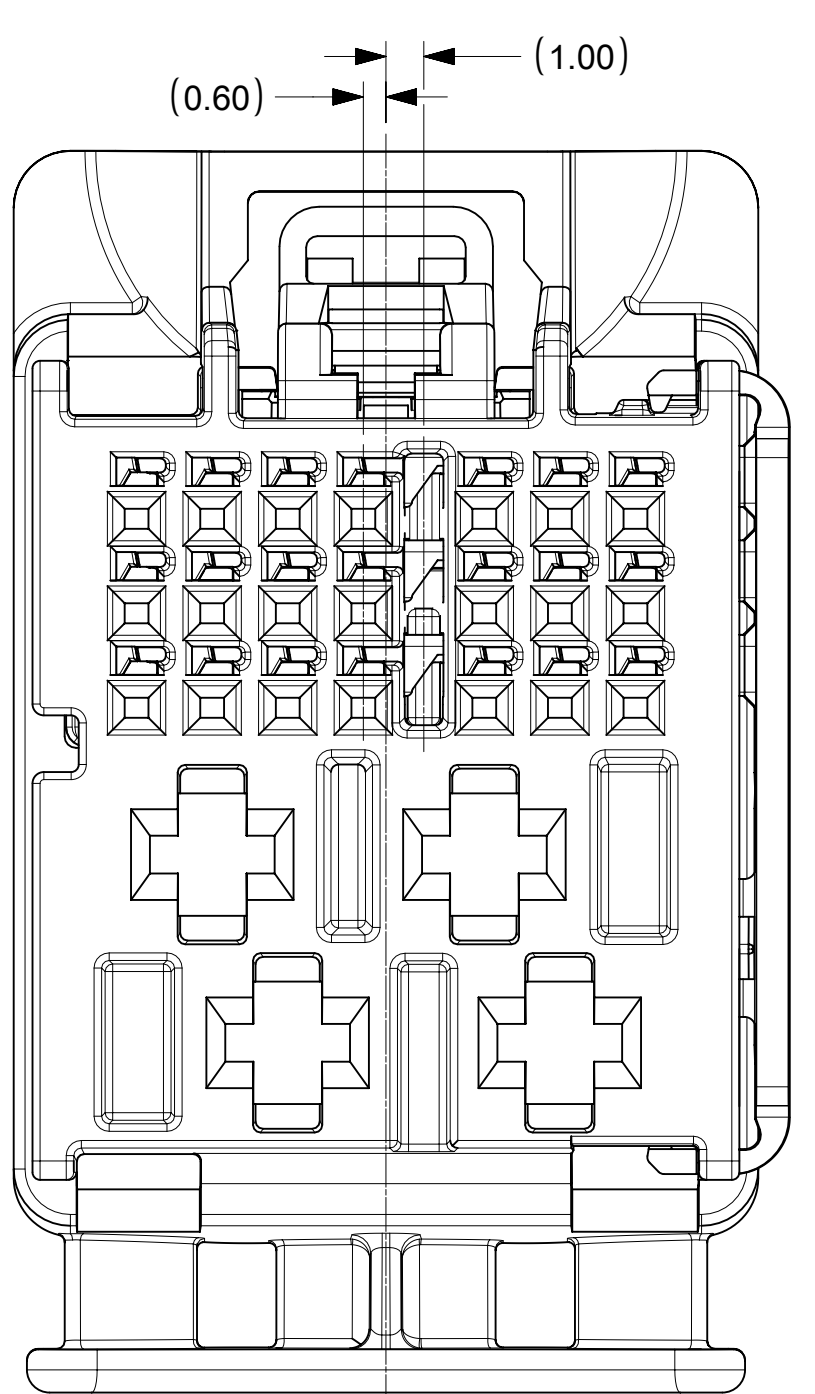
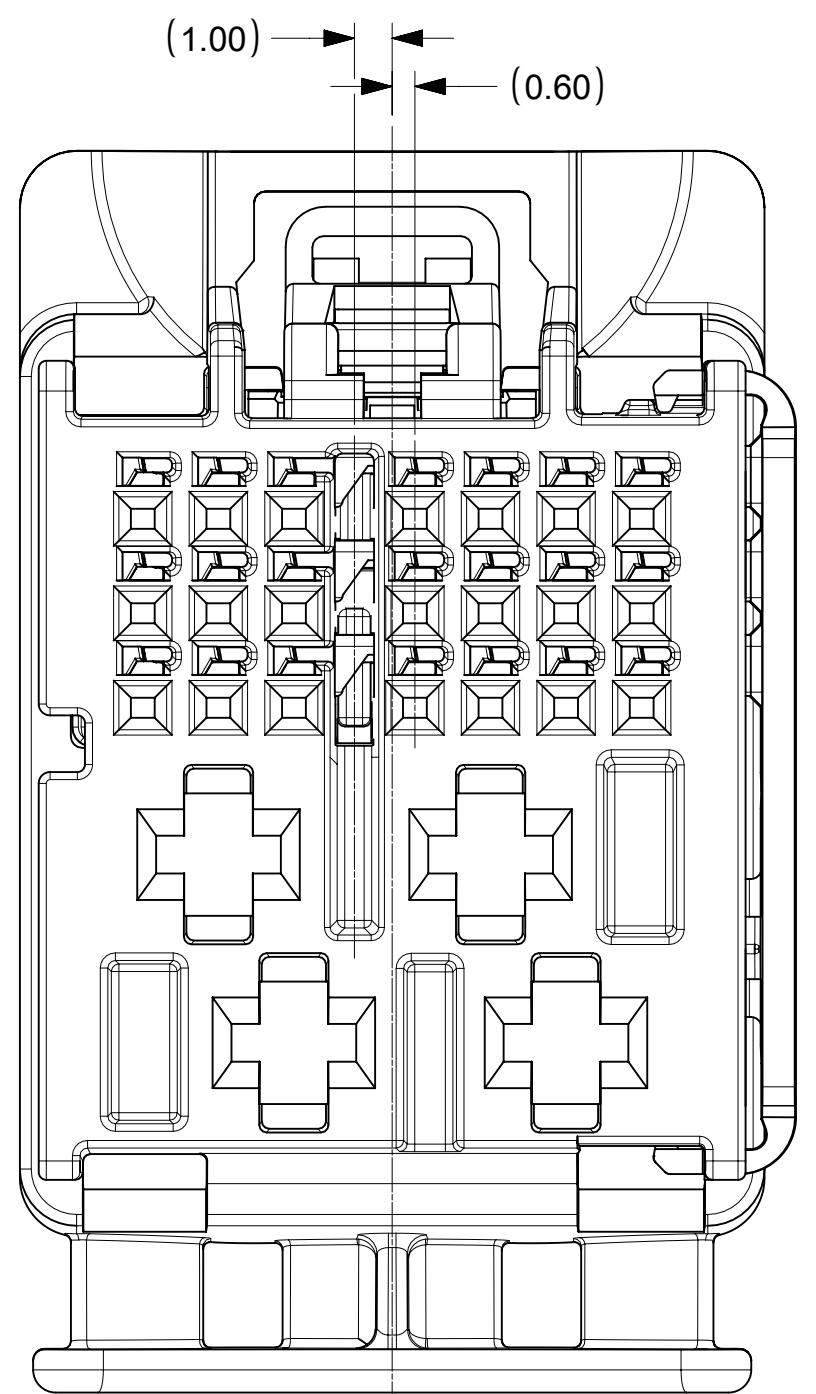
| MOLEX ASSEMBLY PART NO.'S |       |
|---------------------------|-------|
| 1600270011                | KEY 1 |
| 1600270012                | KEY 2 |
| 1600270013                | KEY 3 |
| 1600270014                | KEY 4 |
| 1600270015                | KEY 5 |
| 1600270016                | KEY 6 |
| 1600270017                | KEY 7 |
| 1600270018                | KEY 8 |



SCALE 2:1

RIB OPTION A

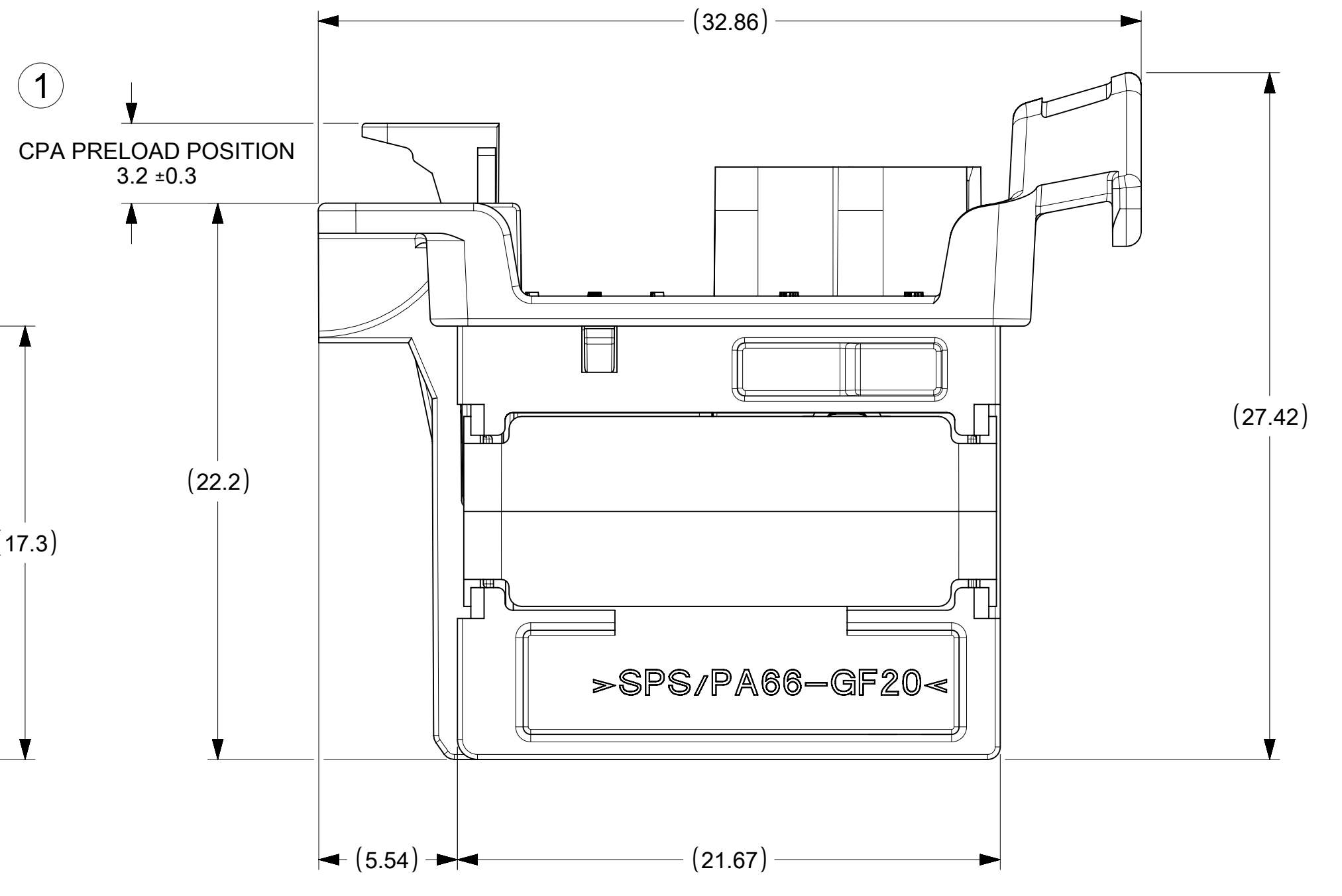
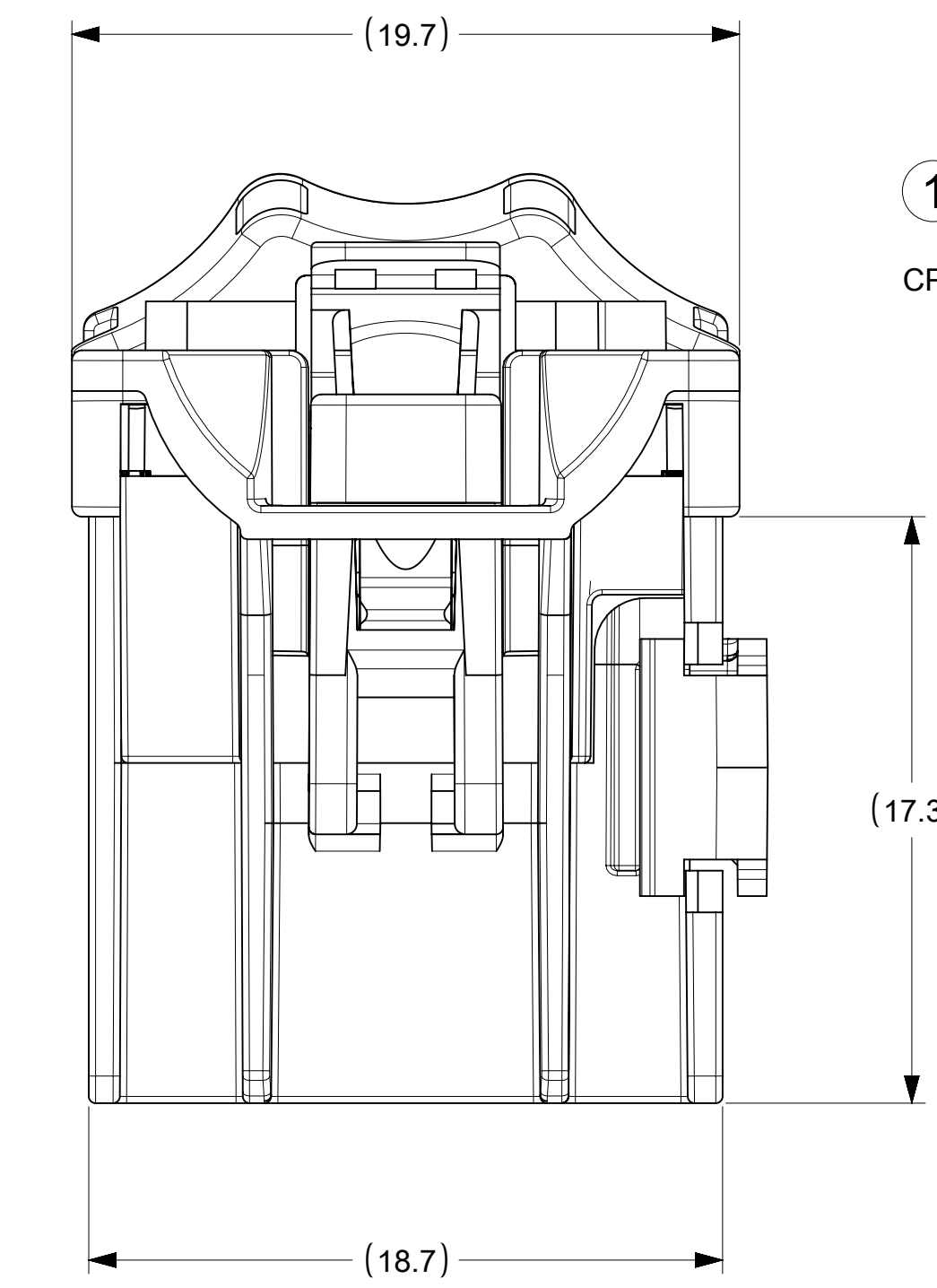
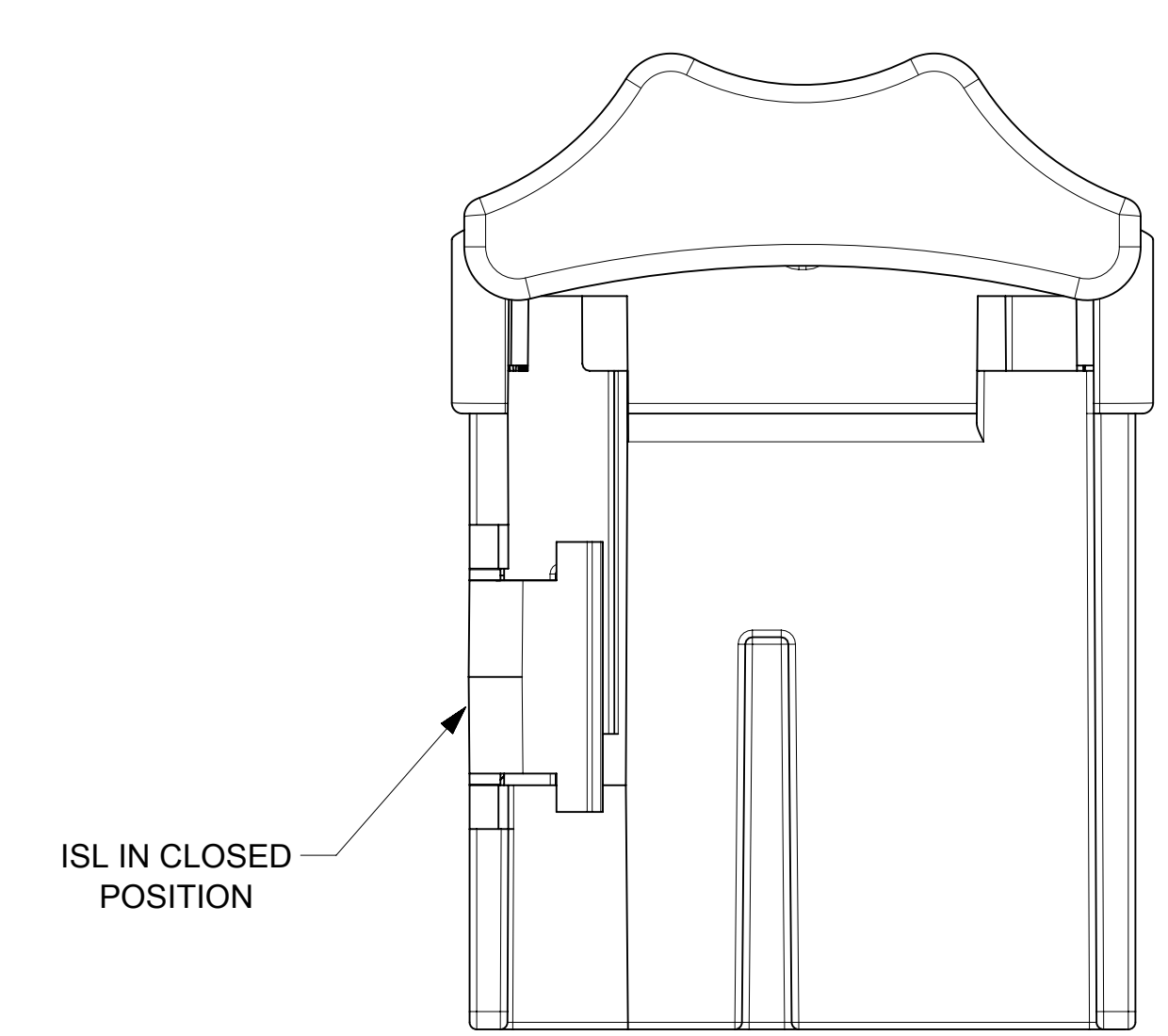
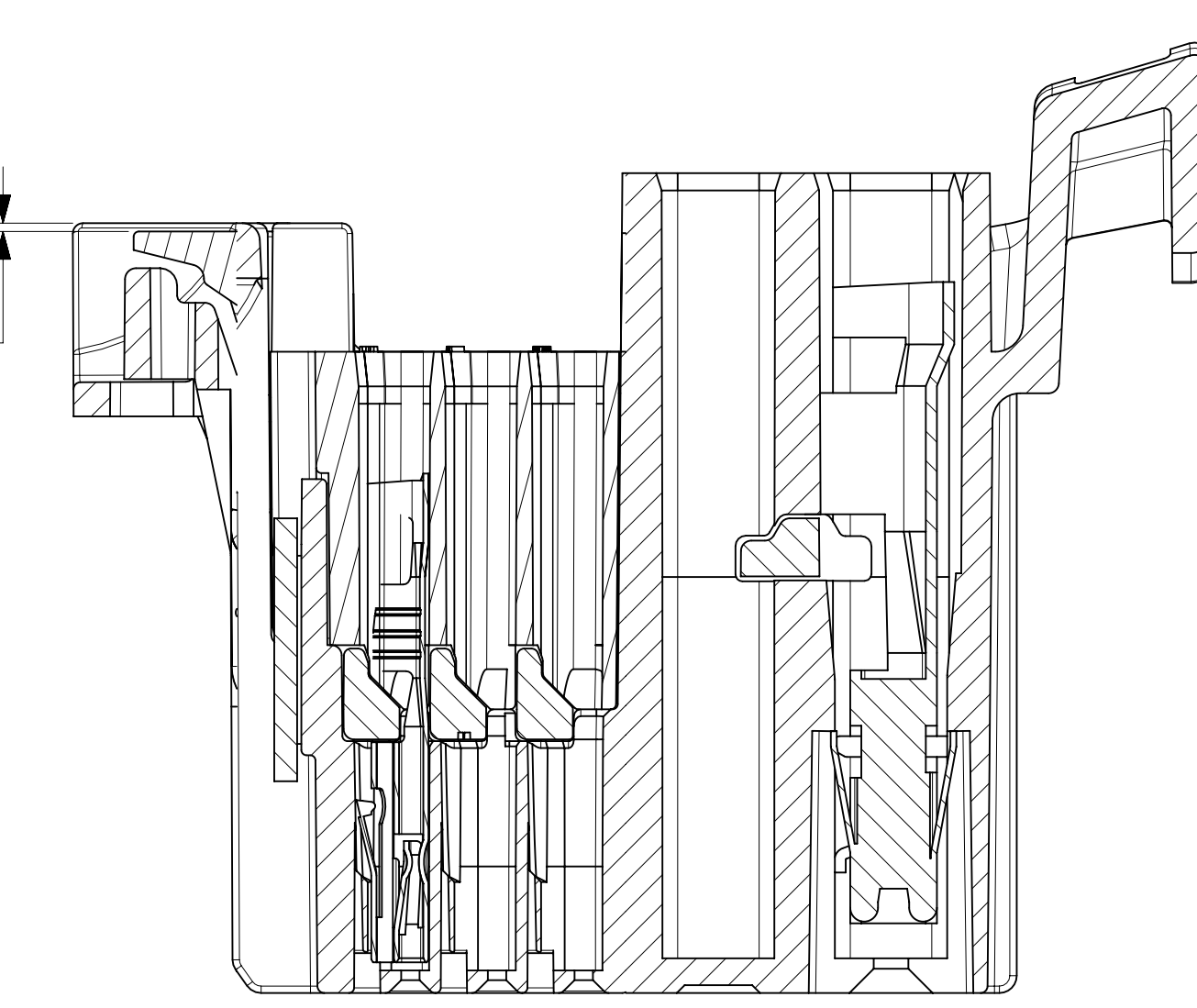
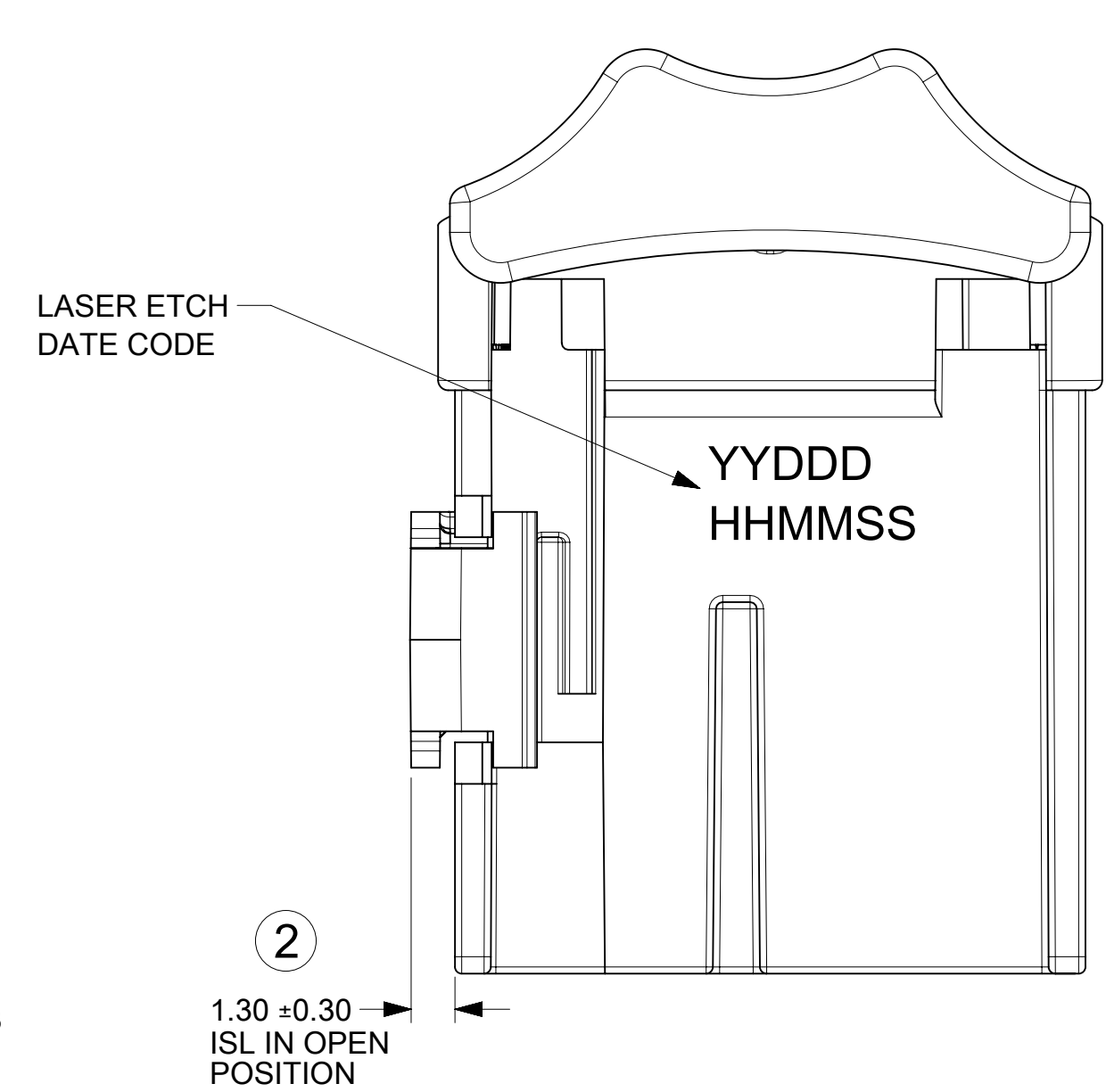
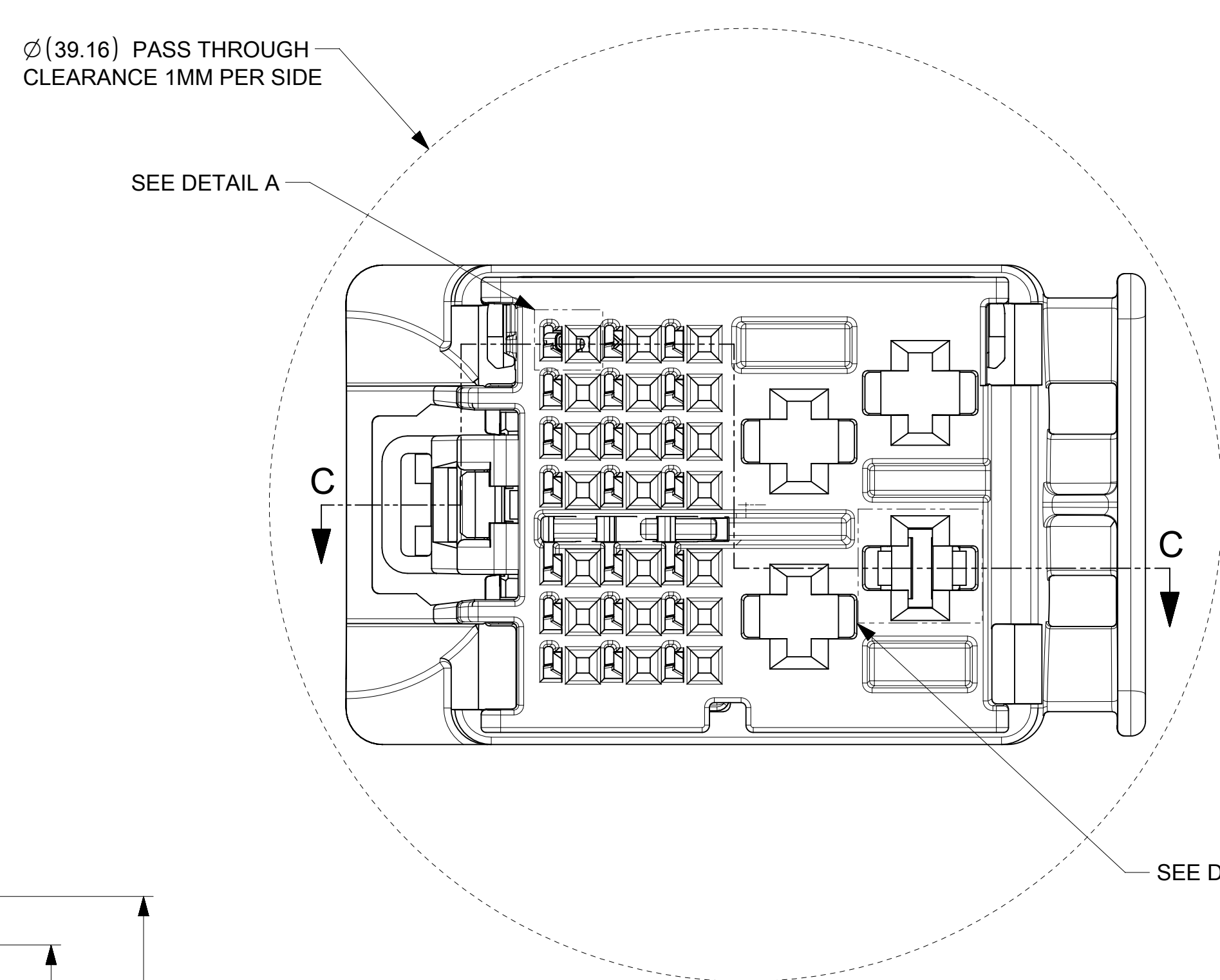
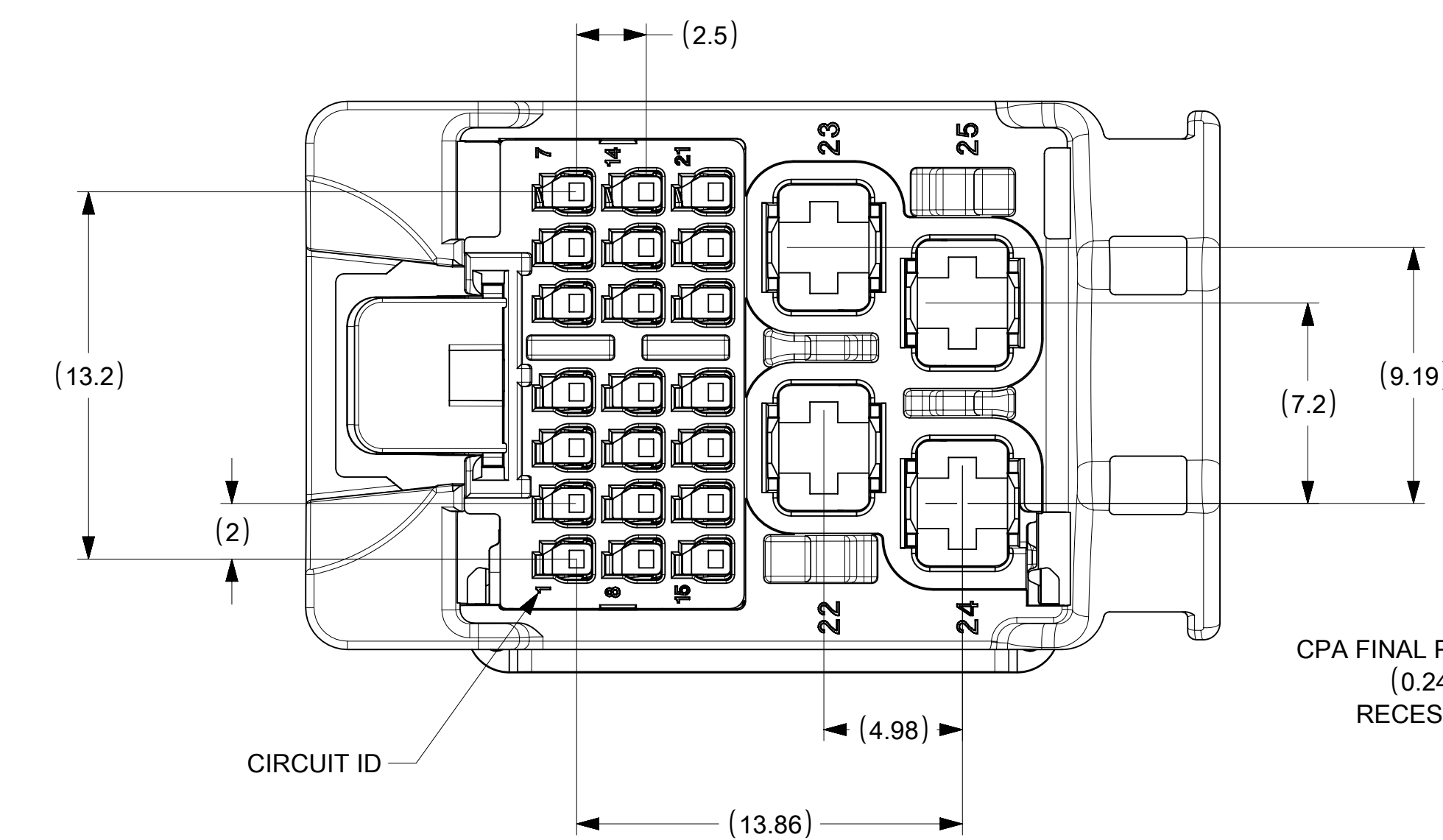
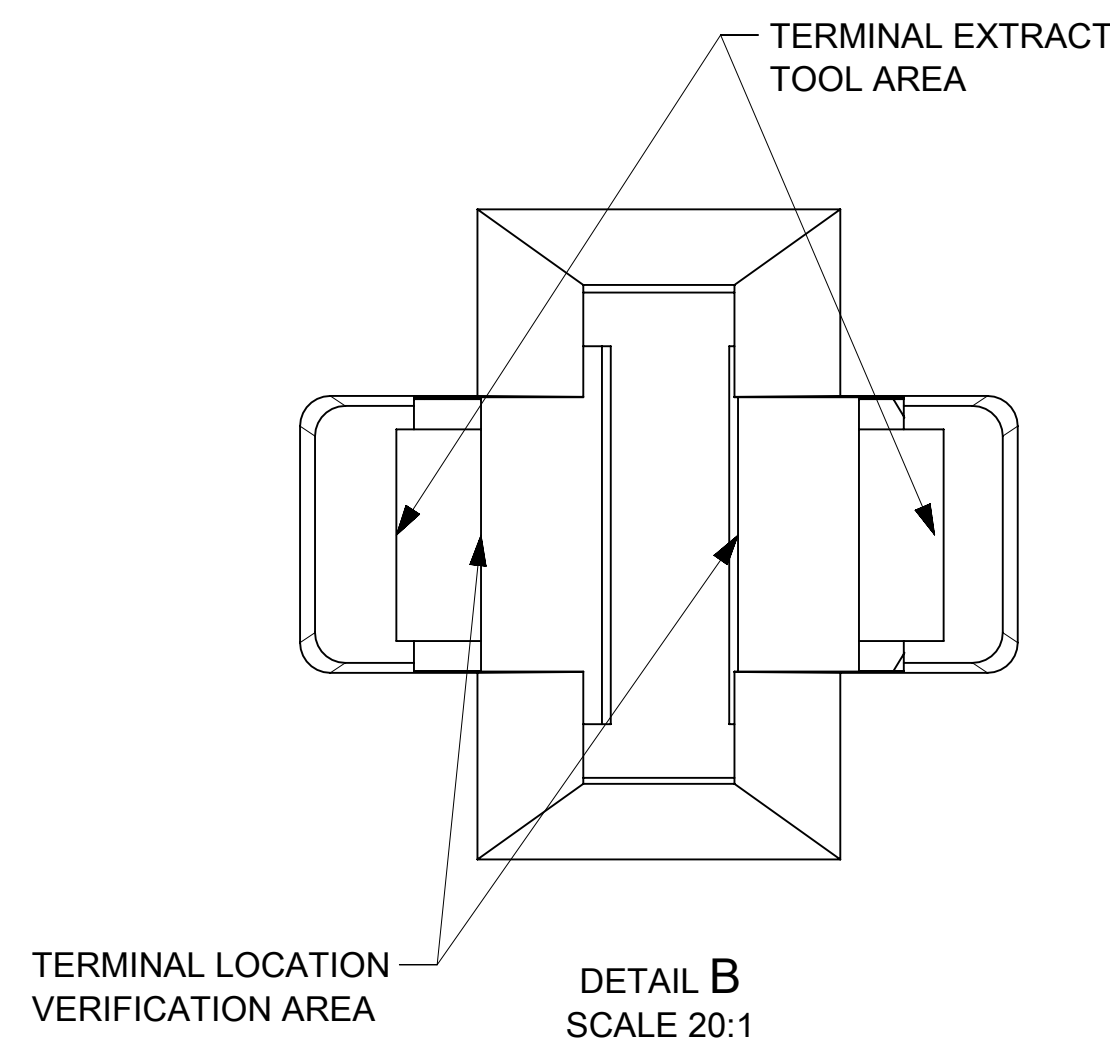
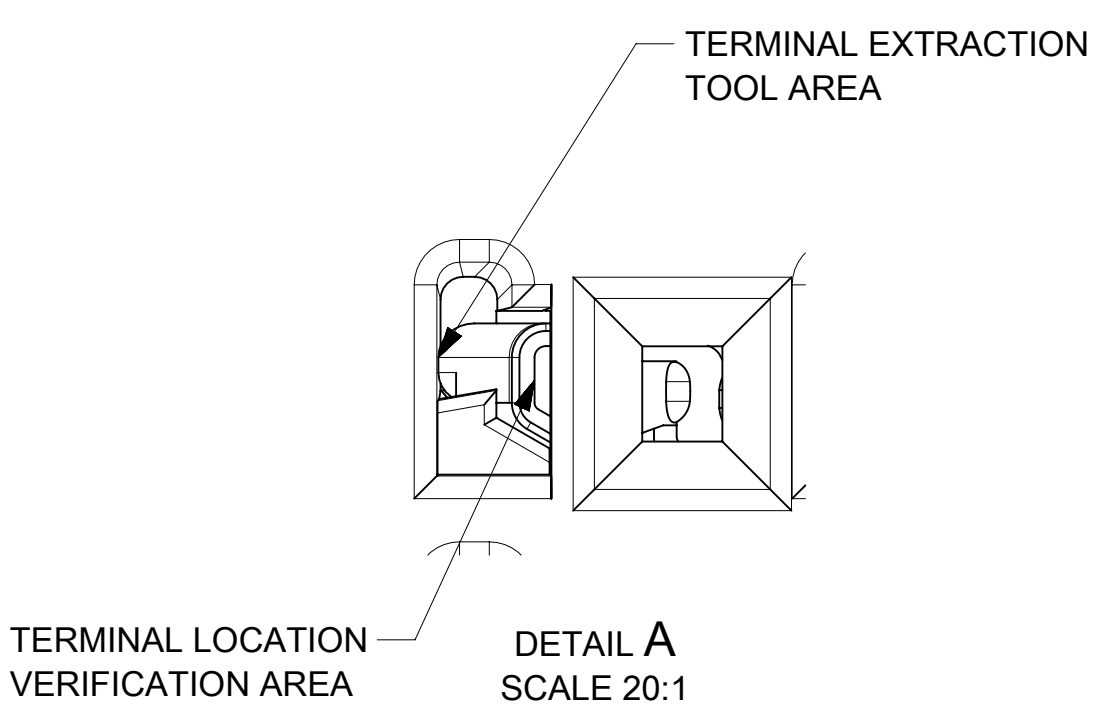
RIB OPTION B



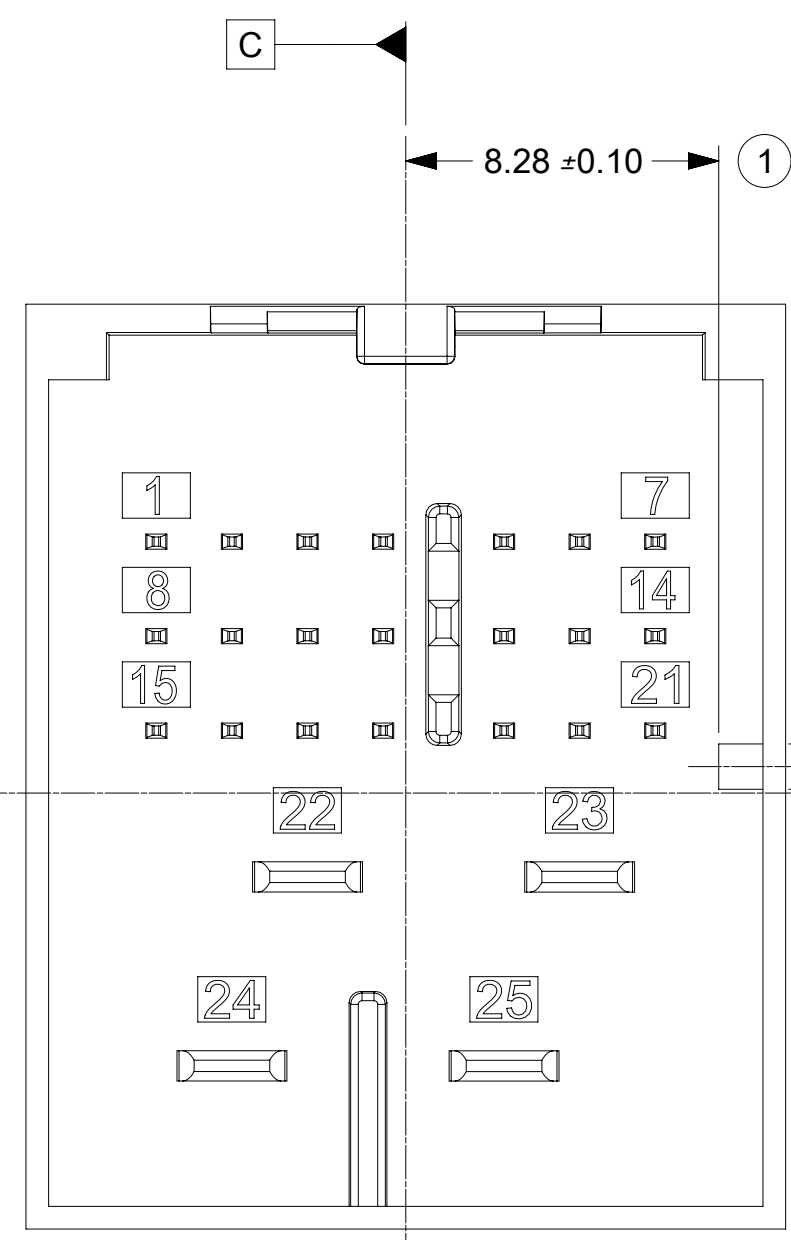
| INSPECTION BALLOON NUMBER LOG |      |
|-------------------------------|------|
| PER DRAWING REVISION :        | A3   |
| LAST BALLOON NUMBER :         | 2    |
| ADDED BALLOON NUMBER :        | NONE |
| DELETED BALLOON NUMBER :      | NONE |

|          |   |
|----------|---|
| A4       | UPDATED TAK50 TERMINAL PINS<br>21-July-2021 YPENG47<br>ECN 648438 |
| REVISION | DESCRIPTION   |

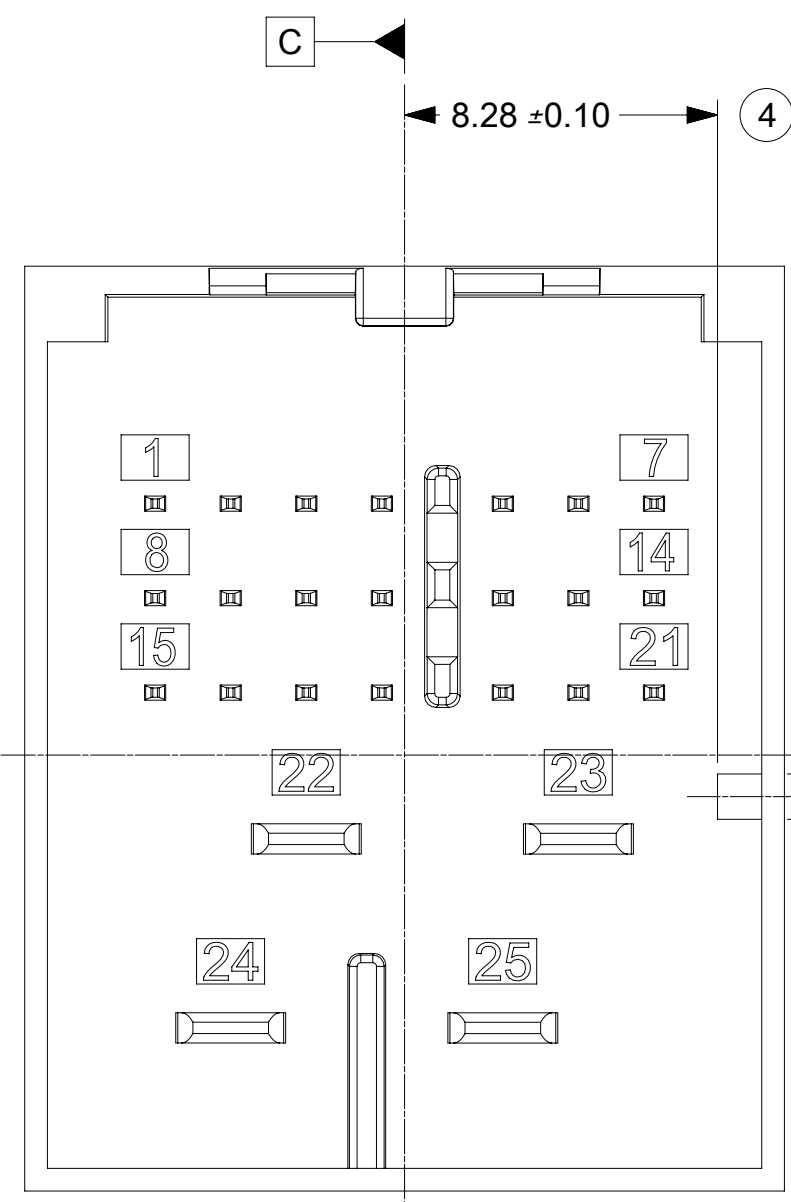
|                 |  |   |                                 |
|-----------------|--|---|---------------------------------|
| SYMBOLS         |  | THIS DRAWING CONTAINS INFORMATION THAT IS PROPRIETARY TO MOLEX ELECTRONIC TECHNOLOGIES, LLC AND SHOULD NOT BE USED WITHOUT WRITTEN PERMISSION |                                 |
| ▽ = 0           | DIMENSION UNITS                                      | SCALE   | CURRENT REV DESC: UPDATED TAK50 |
| ▽ = 0           | mm   | 5:1   | TERMINAL PINS                   |
| ▽ = 0           | GENERAL TOLERANCES (UNLESS SPECIFIED)                |   | EC NO: 648438                   |
| ▽ = 0           | ANGULAR TOL ± 3.0°                                   |   |                                 |
| ▽ = 0           | 4 PLACES   | ±   | DRWN: YPENG47 2021/07/21        |
| ▽ = 0           | 3 PLACES   | ±   | CHK'D: RCARLSON 2021/07/29      |
| ▽ = 0           | 2 PLACES   | ± 0.3   | APPR: JCONDON 2021/08/02        |
| ▽ = 0           | 1 PLACE  | ± 0.3   | INITIAL REVISION:               |
| ▽ = 0           | 0 PLACES   | ± 0.3   | DRWN: RCARLSON 2019/02/18       |
| ▽ = 0           | DRAFT WHERE APPLICABLE MUST REMAIN WITHIN DIMENSIONS |   | APPR: JCONDON 2019/02/25        |
| ▽ = 0           | THIRD ANGLE PROJECTION                               | DRAWING   | SERIES                          |
| ▽ = 0           | D-D-SIZE   | 160027  |                                 |
| DOCUMENT NUMBER |  | DOC TYPE  | DOC PART                        |
| 1600270011      |  | PSD   | 000                             |
| REVISION        |  | REV   | A3                              |
| MATERIAL NUMBER |  | CUSTOMER  | SHEET NUMBER                    |
| SEE CHART       |  | GENERAL MARKET  | 1 OF 2                          |



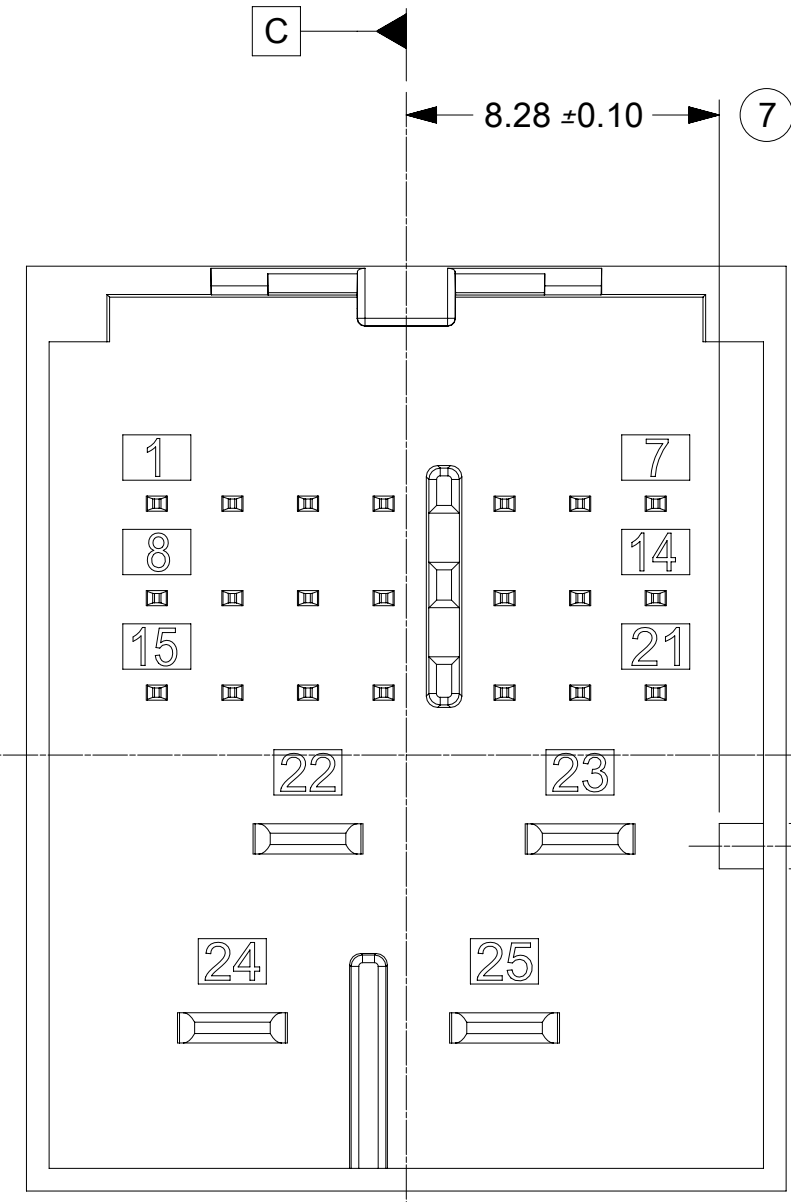
|                                 |   |                                |
|---------------------------------|---|--------------------------------|
| SYMBOLS                         | THIS DRAWING CONTAINS INFORMATION THAT IS PROPRIETARY TO MOLEX ELECTRONIC TECHNOLOGIES, LLC AND SHOULD NOT BE USED WITHOUT WRITTEN PERMISSION |                                |
|                                 | DIMENSION UNITS   | SCALE                          |
| ▽ = 0                           | mm  | 5:1                            |
| ▽ = 0                           | GENERAL TOLERANCES (UNLESS SPECIFIED)   |                                |
| ▽ = 0                           | ANGULAR TOL   | ± 3.0°                         |
| ▽ = 0                           | 4 PLACES  | ±                              |
| ▽ = 0                           | 3 PLACES  | ±                              |
| ▽ = 0                           | 2 PLACES  | ± 0.3                          |
| ▽ = 0                           | 1 PLACE   | ± 0.3                          |
| ▽ = 0                           | 0 PLACES  | ± 0.3                          |
| ■ = 0                           | DRAFT WHERE APPLICABLE MUST REMAIN WITHIN DIMENSIONS  |                                |
| ▽ = 0                           | THIRD ANGLE PROJECTION  |                                |
| CURRENT REV DESC: UPDATED TAK50 |   | TERMINAL PNS                   |
| EC NO: 648438                   |   | 2021/07/21                     |
| DRWN: YPENG47                   |   | 2021/07/29                     |
| CHK'D: RCARLSON                 |   | 2021/07/29                     |
| APPR: JCONDON                   |   | 2021/08/02                     |
| INITIAL REVISION:               |   |                                |
| DRWN: RCARLSON                  |   | 2019/02/18                     |
| APPR: JCONDON                   |   | 2019/02/25                     |
| DRAFTING                        |   | SERIES                         |
| D-SIZE                          |   | 160027                         |
| MATERIAL NUMBER                 |   | CUSTOMER                       |
| SEE SHEET 1                     |   | GENERAL MARKET                 |
| DOCUMENT NUMBER                 |   | DOC TYPE   DOC PART   REVISION |
| 1600270011                      |   | PSD   000   A3                 |
| SHEET NUMBER                    |   |                                |
| 2 OF 2                          |   |                                |



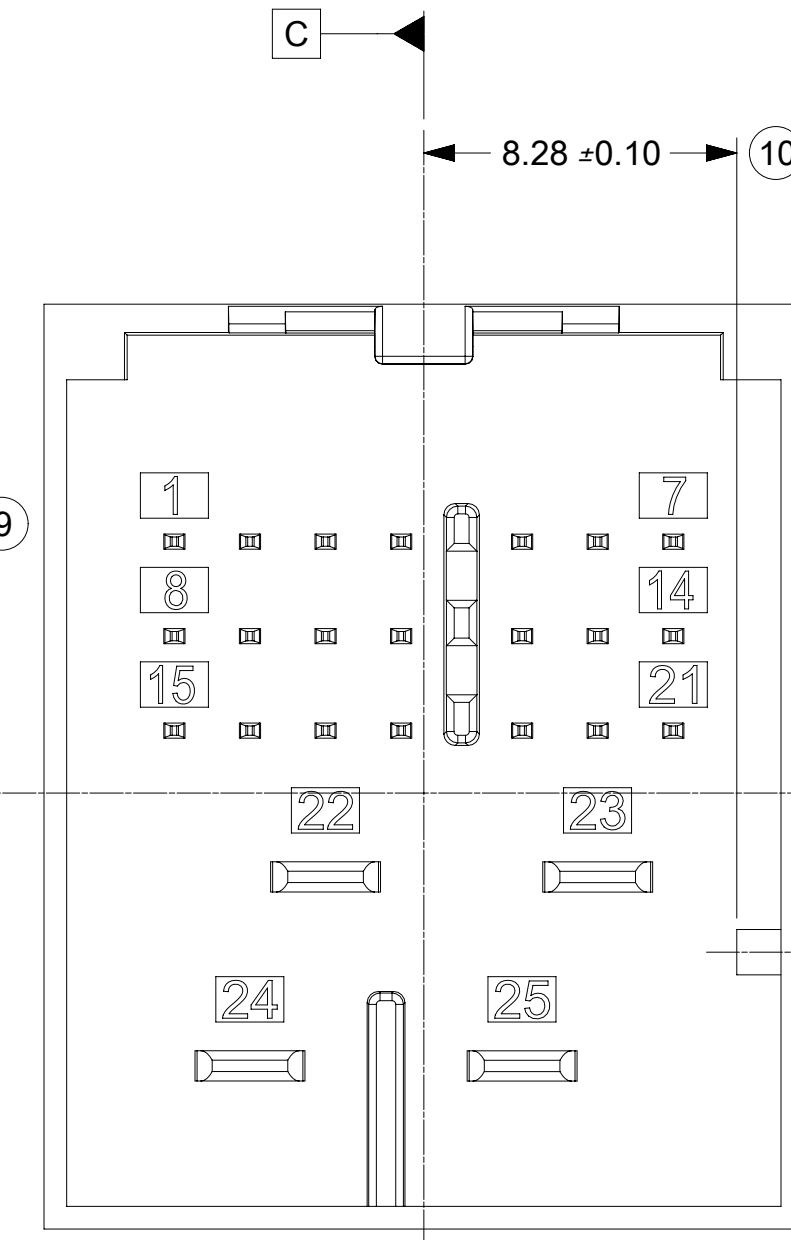
INTERFACE KEY 1 & KEY 5



INTERFACE KEY 2 & KEY 6



INTERFACE KEY 3 & KEY 7



INTERFACE KEY 4 & KEY 8

| INTERFACE OPTIONS |            |                        |
|-------------------|------------|------------------------|
| KEY               | RIB OPTION | MATING CONNECTOR COLOR |
| 1                 | OPTION A   | LIGHT GREEN B          |
| 2                 | OPTION A   | STONE GRAY             |
| 3                 | OPTION A   | BLACK                  |
| 4                 | OPTION A   | DARK GRAY              |
| 5                 | OPTION B   | DARK PURPLE A          |
| 6                 | OPTION B   | TBD                    |
| 7                 | OPTION B   | TBD                    |
| 8                 | OPTION B   | LIGHT GRAY             |

NOTES: VALID UNLESS OTHERWISE SPECIFIED

1. DESIGN - MATERIALS:

- a. RESIN MATERIAL : PBT+GF30 OR SPS+GF30 OR EQUIVALENT
- b. PIN/BLADE MATERIAL : ACCORDING TO USCAR DRAWING EWCAP-001 NOTE B2
- c. PLATING: ACCORDING TO USCAR DRAWING EWCAP-001 TIN REFLOW WITH UNDERPLATE
- d. PIN TIPS ACCORDING TO USCAR DRAWING EWCAP-001 (050-T001 & 280-T001)
- e. DEVIATION TO EWCAP-001 ACCEPTABLE IF PERFORMANCE (ELECTRICAL/MECHANICAL) IS SHOWN TO BE EQUAL OR BETTER AS REQUIRED BY VALIDATION TESTING.
- Ⓢ 1. DEVIATION TO TIN PLATING THICKNESS AS NECESSARY TO MEET MATING FORCE AND ALL VALIDATION REQUIREMENTS

2. DRAWING - GEOMETRY:

- a. ALL GRAPHIC DATA IS BASIC (NO TOLERANCE) AND MUST BE TAKEN FROM THE DATA FILE AT ITS LATEST REVISION.
- b. GEOMETRIC DIMENSIONS AND TOLERANCES PER ASME Y14.5M-2009.
- c. GENERAL TOLERANCES:  
 LINEAR : PER DIN 16901 LINEAR CODE B FOR PRECISION ENGINEERING  
 ANGULAR : ±3°
- d. EDGES AND UNDIMENSIONED DETAILS PER ISO13715
- e. CORNERS SHOW AS SHARP TO BE R 0.2 MAX.
- f. LETTERS SHALL BE 0.2 MAX RAISED IN 0.25 MAX RECESSED PAD.  
 THIS INCLUDES RECYCLING CODE, CAVITY ID, VENDOR IDENTIFICATION, AND CUSTOMER MATERIAL NUMBER.

3. DESIGN - MANUFACTURING:

- a. DRAFT TO BE WITHIN TOLERANCE.

|    |  |
|----|--|
| C1 | UPDATED BASIC DIMENSIONS IN SECTION B-B ON SHEET 2<br>ECN: 649575 11/19/2020 YPENG47   |
| C  | ADDED 2.8MM BLADE LENGTH VARIANT FOR MATE FORCE REQUIREMENT<br>ADDED NOTE 1.E.1<br>CHANGE RECORD: 626144<br>JPATE 10/22/2019 |
| B1 | ADDED BALLOONS<br>JCONDON 08/02/2018   |
| B  | REMOVED 0.2MM FROM CONNECTOR LOCK TAB FEATURE  |
| A2 | ADDED CIRCUIT IDs  |
| A1 | ADDED NOTE 1e, MKOWALSKY 7/7/2017  |
| 8  | GEOMETRY UPDATED ,<br>SPEMMARAJU 02/18/2016  |
| 7  | UAU2016-1146<br>SAP # 10681629<br>JCONDON 03/25/2015   |

| INSPECTION BALLOON NUMBER LOG |      |
|-------------------------------|------|
| PER DRAWING REVISION:         | C1   |
| LAST BALLOON NUMBER:          | 63   |
| DELETED BALLOON NUMBER:       | NONE |
| DELETED BALLOON NUMBER:       | NONE |

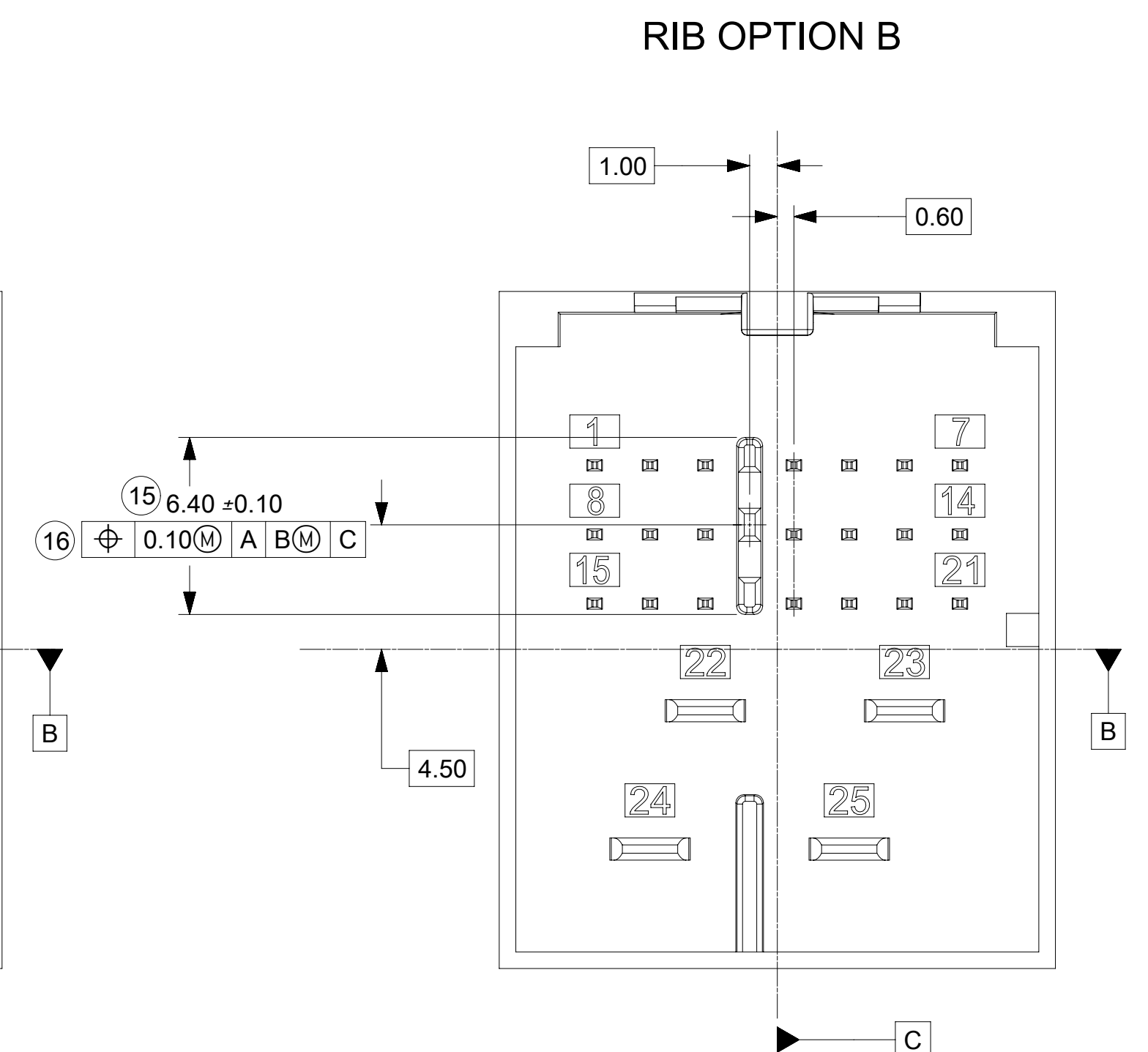
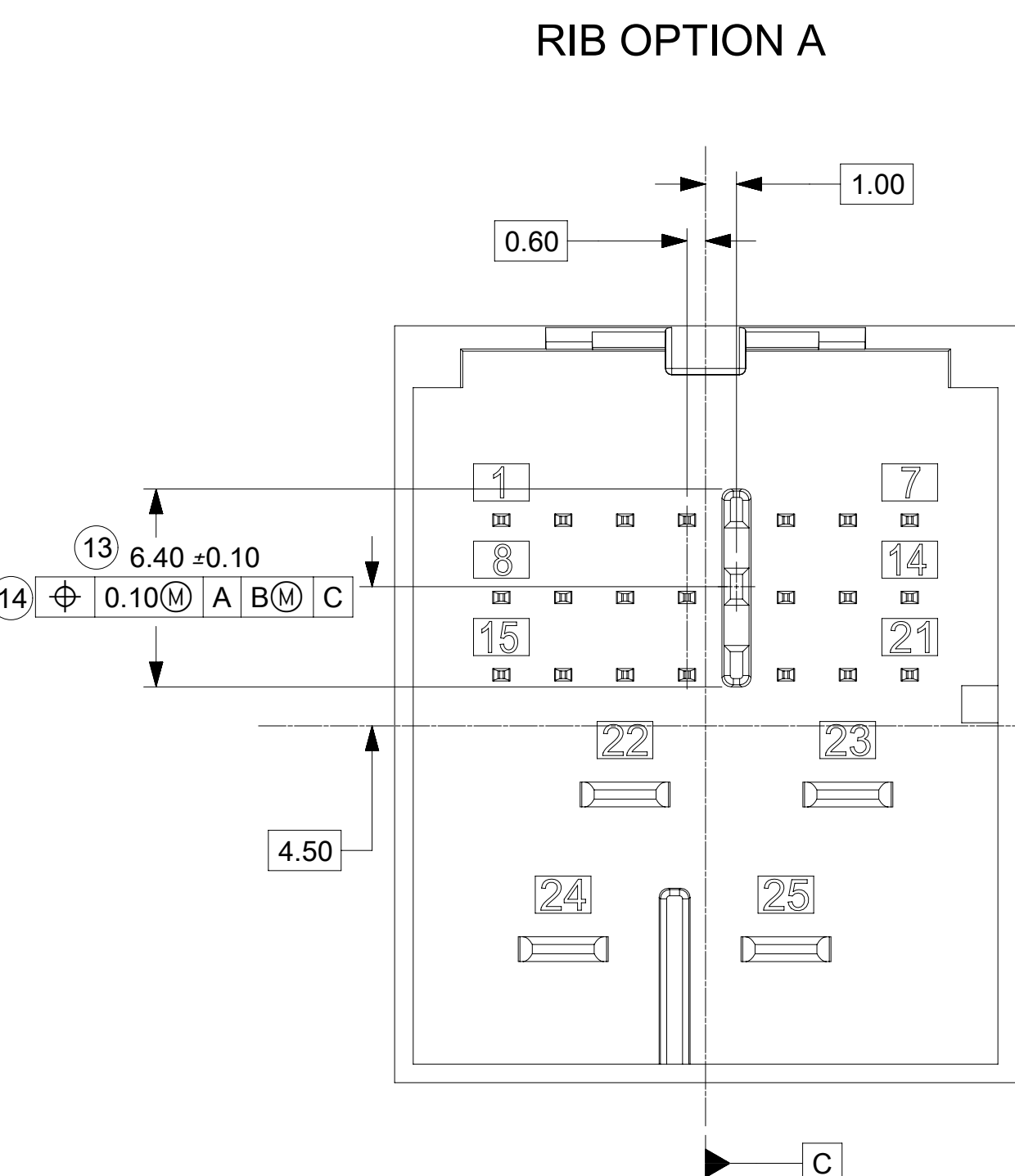
|  |   |
|--|---|
| FUNCTIONAL SYMBOLS                                   | THIS DRAWING CONTAINS INFORMATION THAT IS PROPRIETARY TO MOLEX ELECTRONIC TECHNOLOGIES, LLC AND SHOULD NOT BE USED WITHOUT WRITTEN PERMISSION |
| FA = 0   | DIMENSION UNITS: mm SCALE: 5:1  |
| FE = 0   | GENERAL TOLERANCES (UNLESS SPECIFIED)   |
| FP = 0   | ANGULAR TOL ± °   |
| DIVISIONAL SYMBOLS                                   | 4 PLACES ±  |
|  | 3 PLACES ±  |
|  | 2 PLACES ±  |
|  | 1 PLACE ±   |
|  | 0 PLACES ±  |
| DRAFT WHERE APPLICABLE MUST REMAIN WITHIN DIMENSIONS | THIRD ANGLE PROJECTION  |
|  | DRAWING SERIES: D-SIZE 160027   |
|  | CURRENT REV DESC: UPDATED BASIC DIMENSIONS IN SECTION B-B ON SHEET 2  |
|  | EC NO: 649575   |
|  | DRWN: YPENG47 2020/11/19  |
|  | CHK'D: JRUTTER 2020/11/23   |
|  | APPR: MVANSLAMBROU 2020/11/25   |
|  | INITIAL REVISION:   |
|  | DRWN: SPEMMARAJU 2015/11/03   |
|  | APPR: KDEKOSKI 2016/03/24   |
|  | MATERIAL NUMBER: SD-160027-002  |
|  | CUSTOMER: GENERAL MARKET  |
|  | DOC TYPE: PSD   |
|  | DOC PART: 000   |
|  | REVISION: C1  |
|  | SHEET NUMBER: 1 OF 3  |

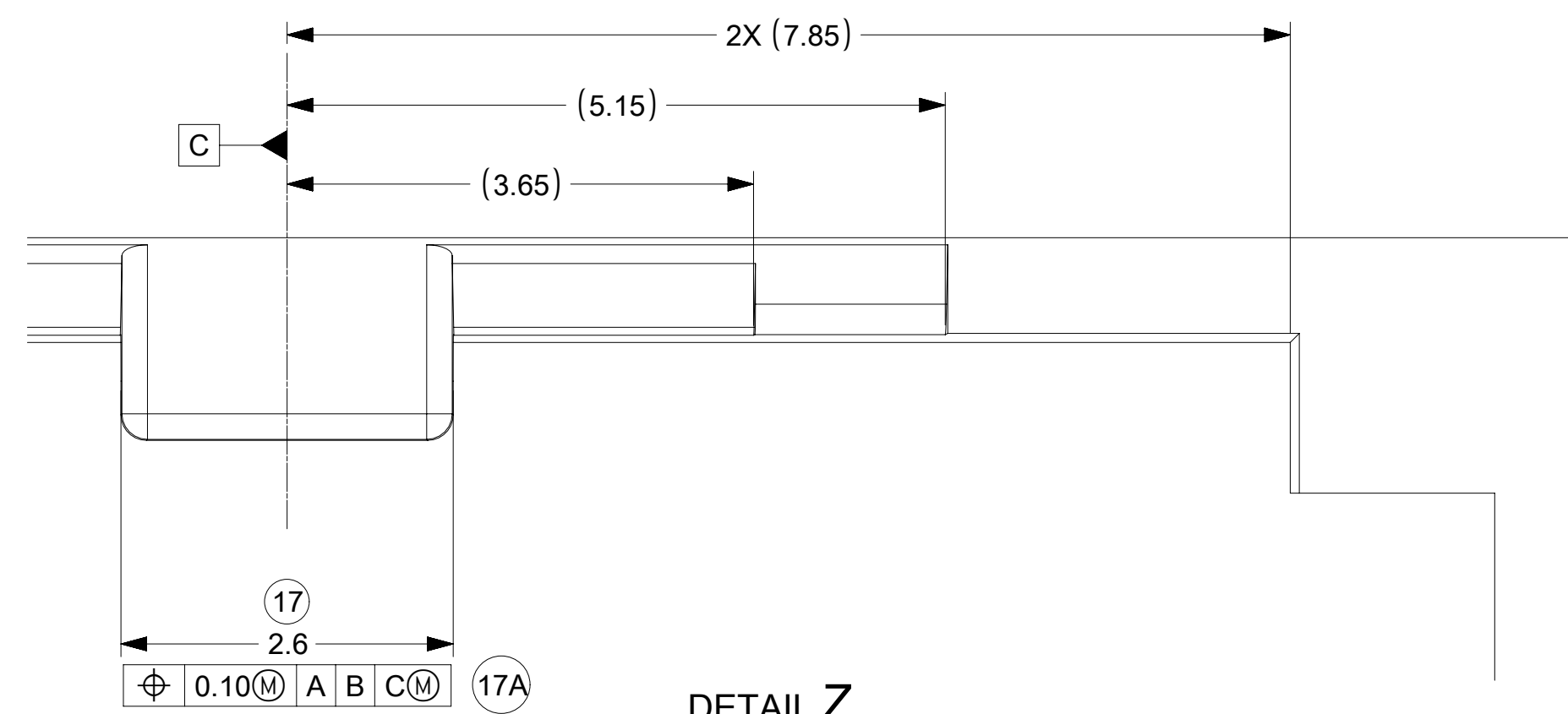
**molex**

25WAY STAK50H  
INTERFACE DRAWING

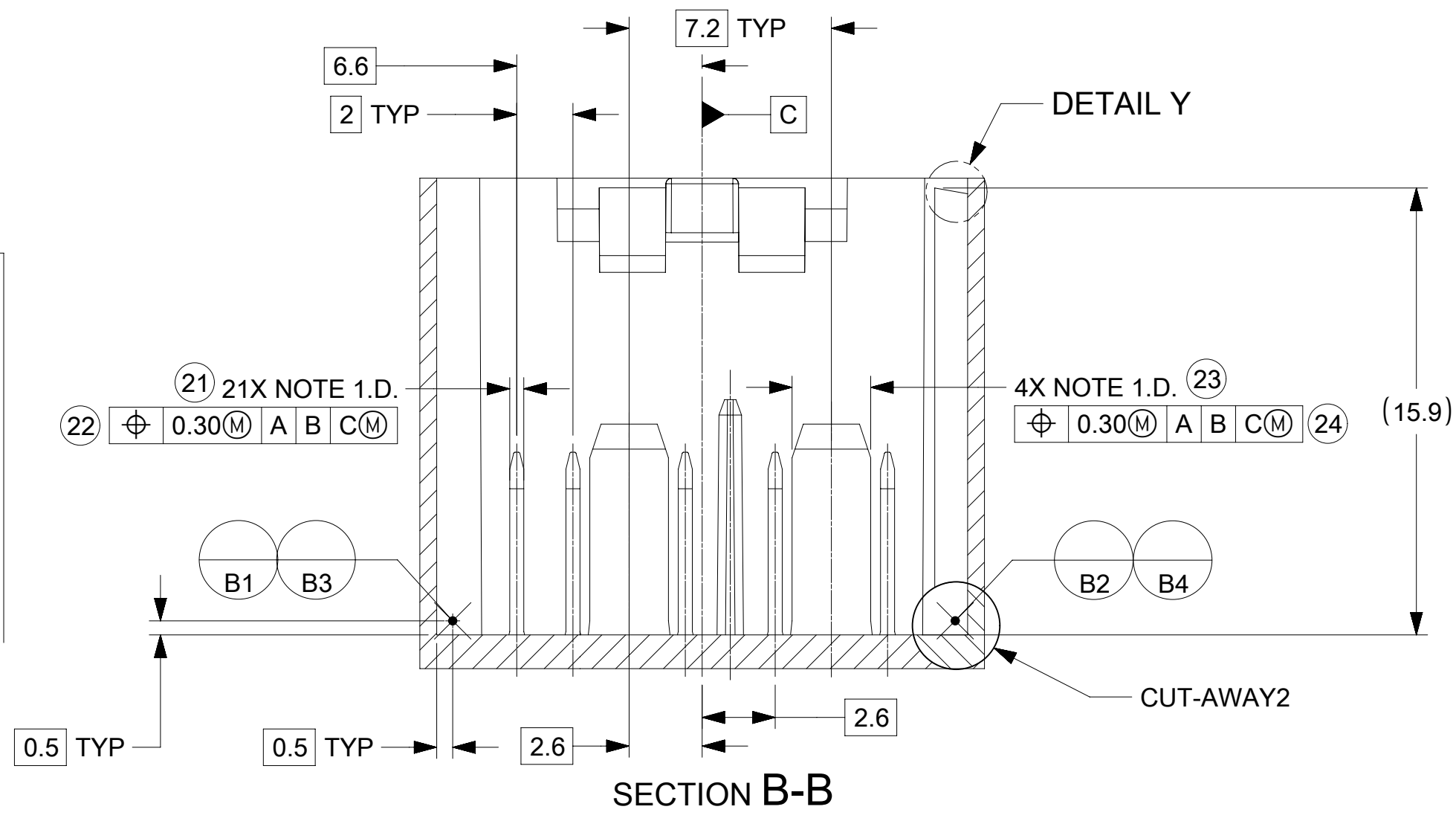
PRODUCT CUSTOMER DRAWING

DOCUMENT NUMBER: SD-160027-002 DOC TYPE: PSD DOC PART: 000 REVISION: C1

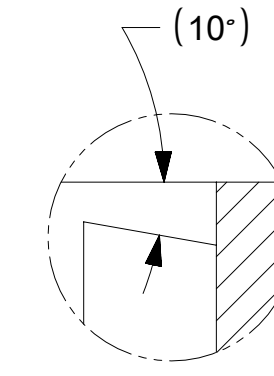




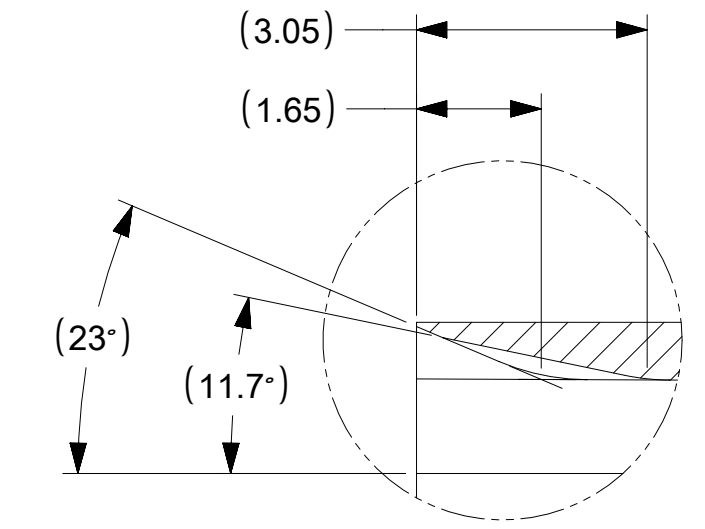
DETAIL Z  
SCALE 20:1



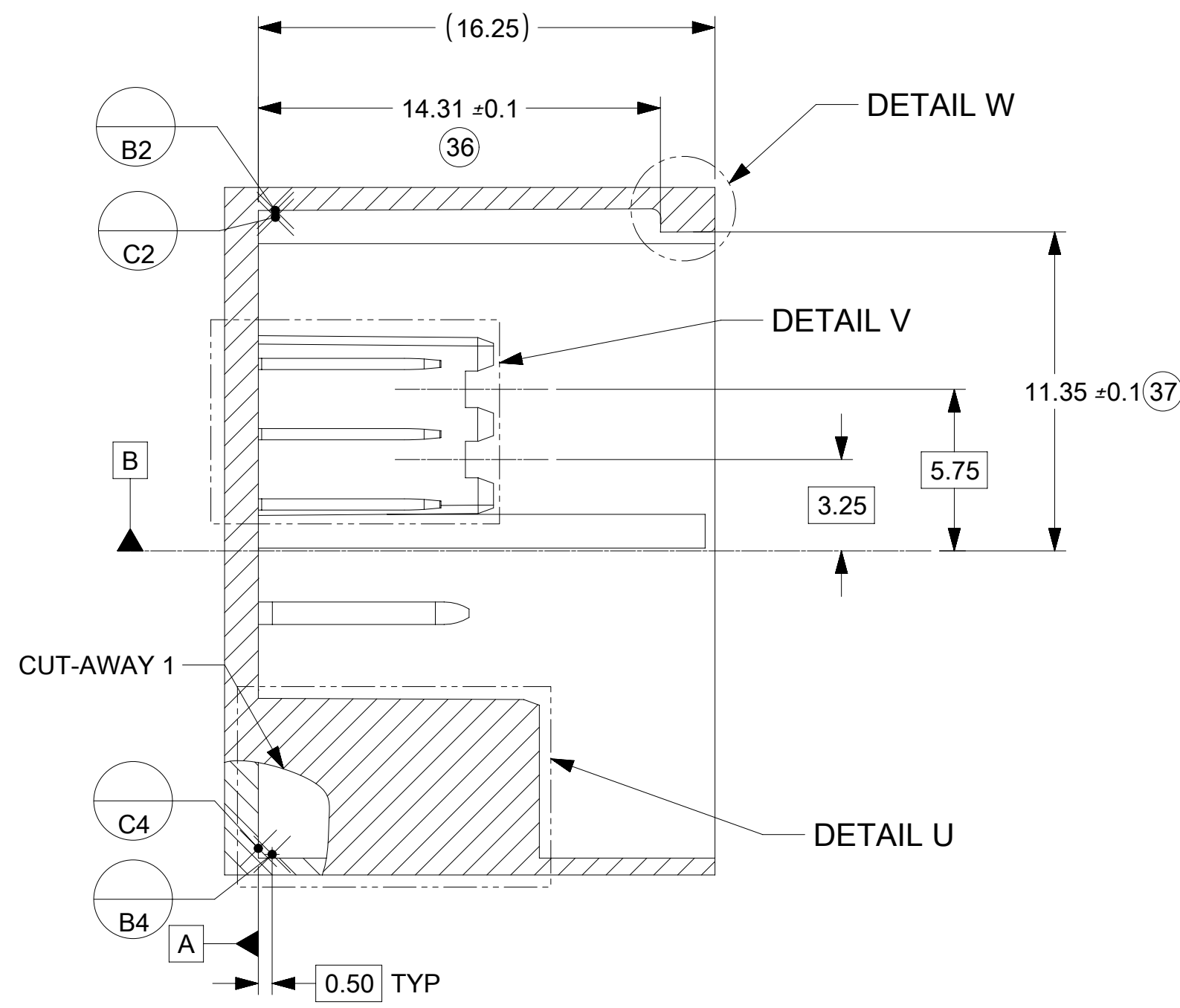
SECTION B-B



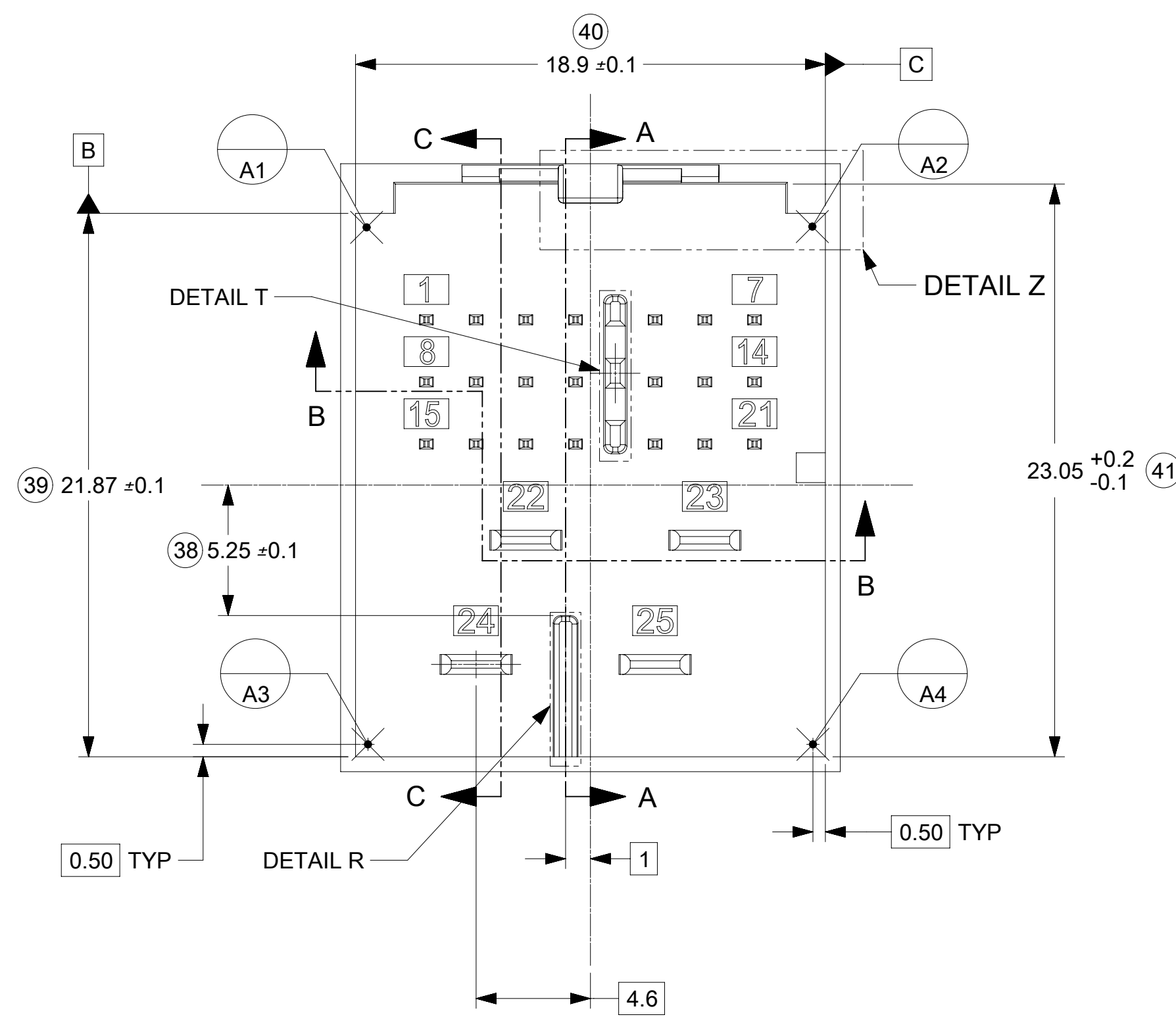
DETAIL Y  
SCALE 15:1



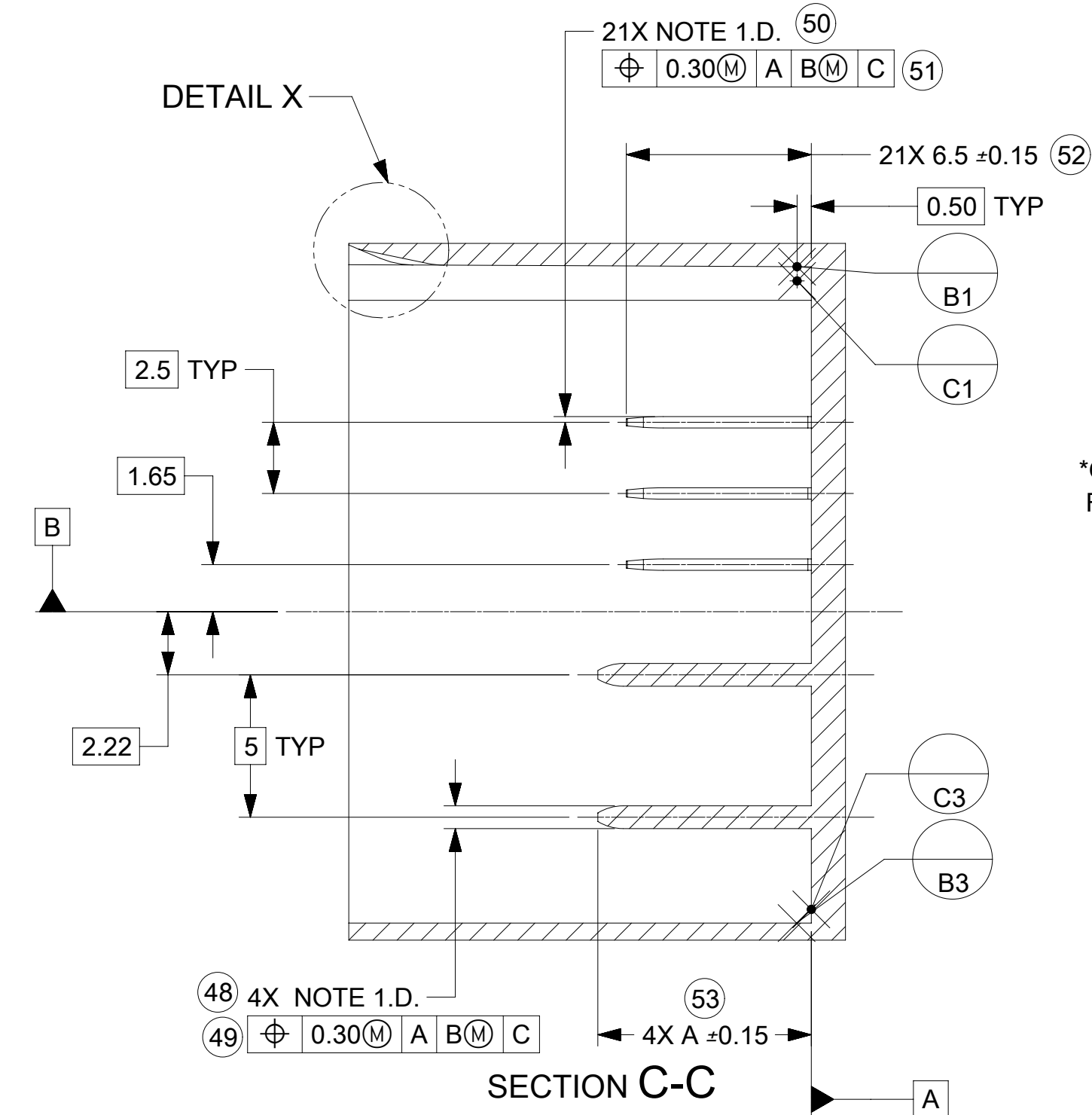
DETAIL X  
SCALE 10:1



SECTION A-A



DETAIL U  
SCALE 10:1



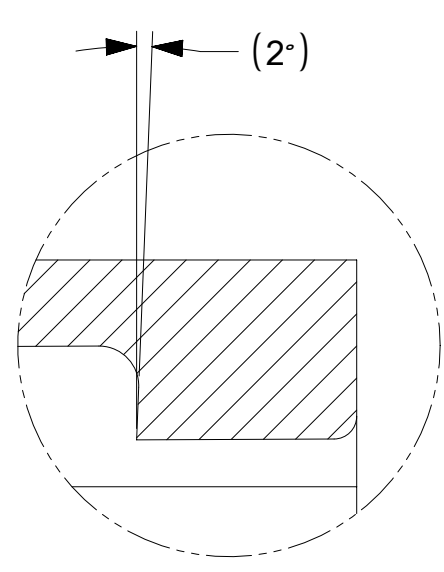
SECTION C-C

DETAIL T  
SCALE 10:1

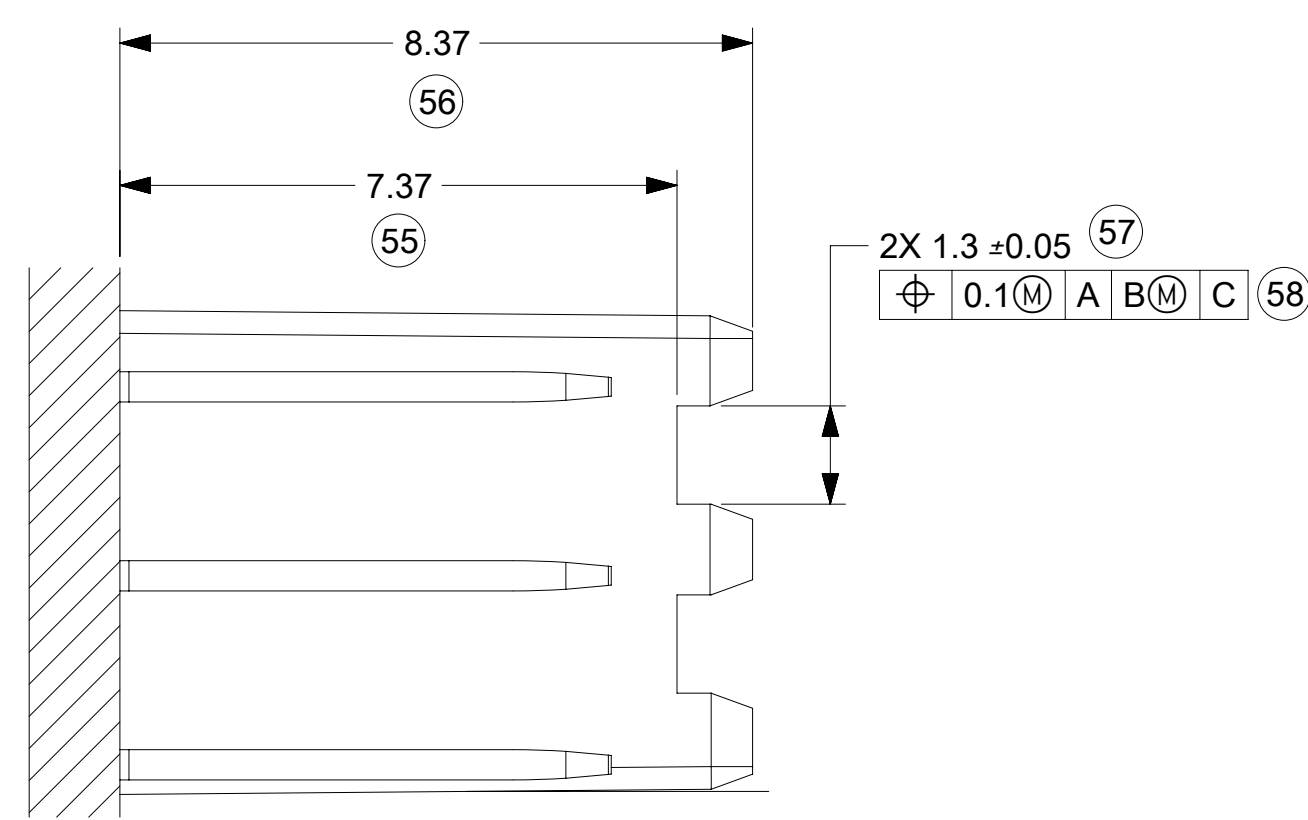
DETAIL R  
SCALE 10:1

| CONSTRUCTION | DIM. A (mm) | STATUS     |
|--------------|-------------|------------|
| OPTION A     | 7.5         | REVISION B |
| OPTION B     | 6.5         | REVISION C |

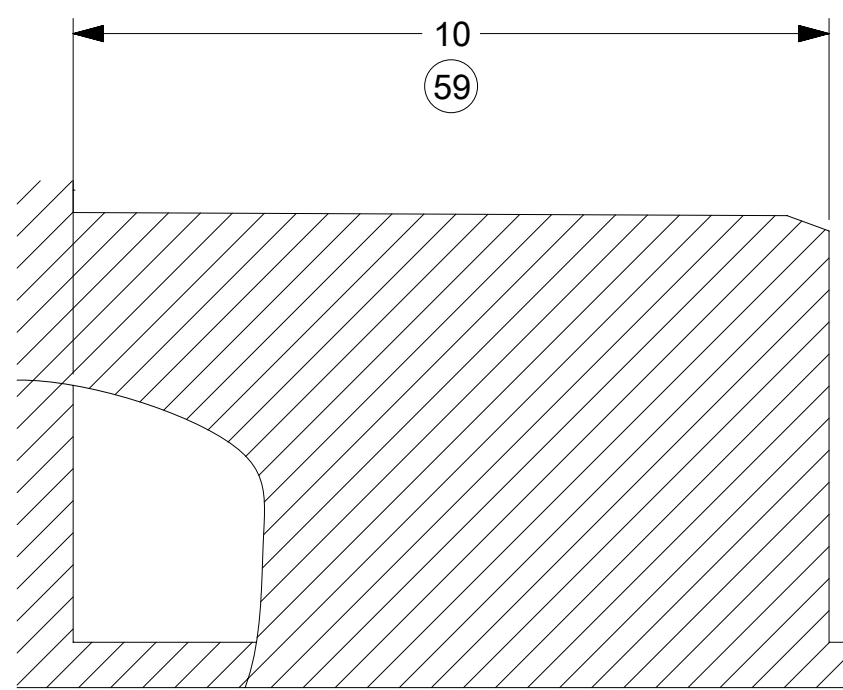
\*OPTION B IS THE PREFERRED CONSTRUCTION FOR ALL NEW HEADERS



DETAIL W  
SCALE 15:1



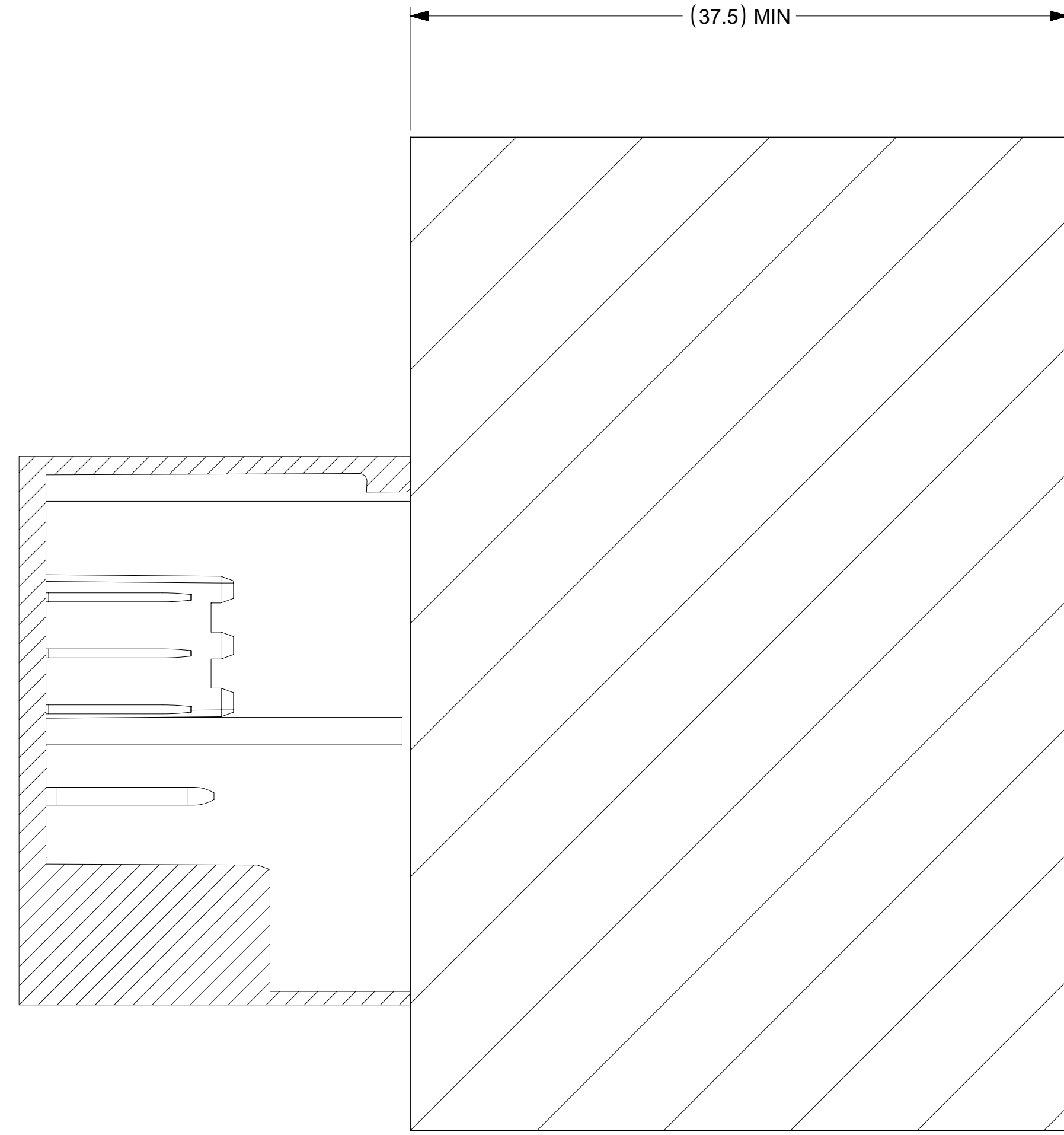
DETAIL V  
SCALE 10:1



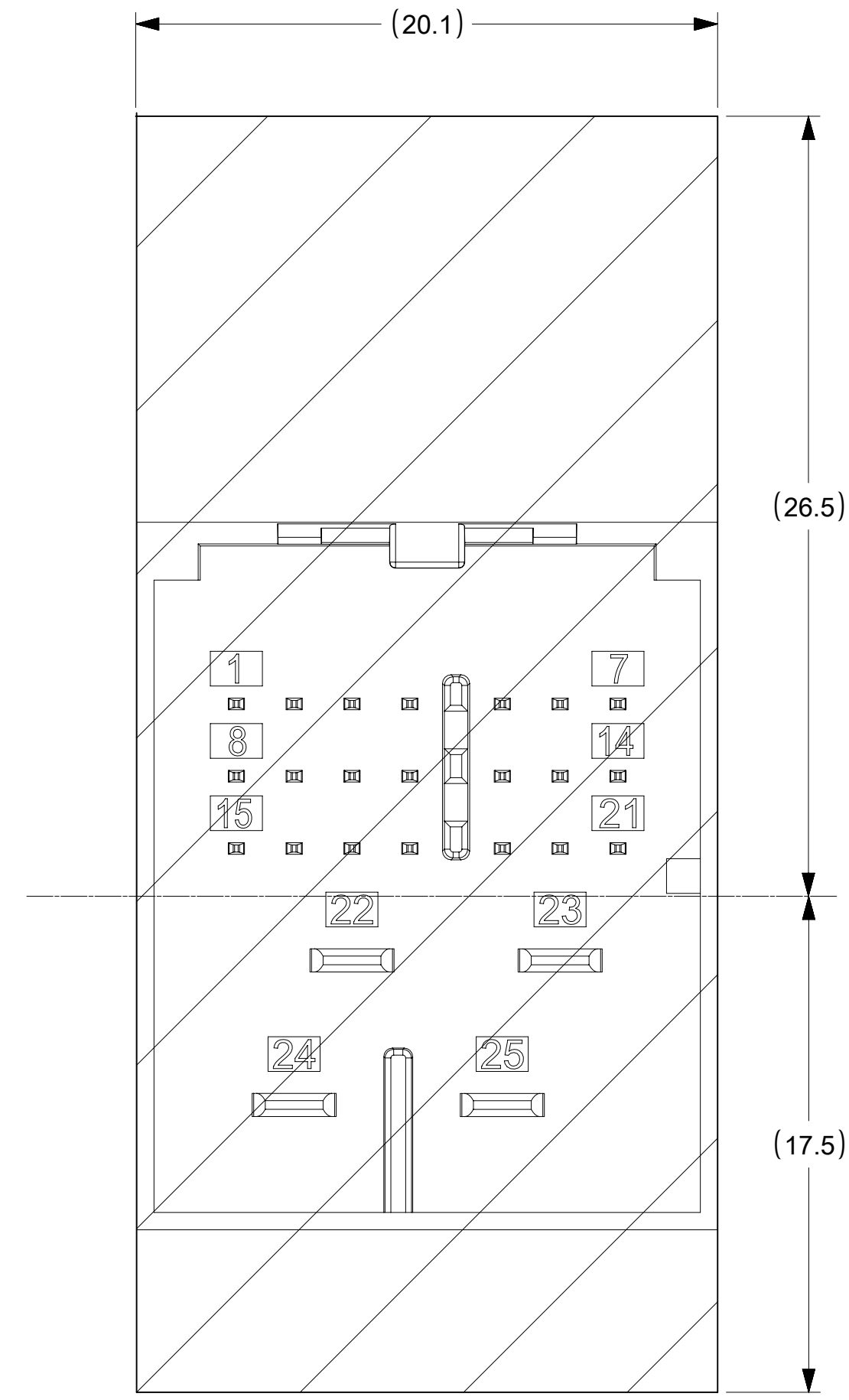
DETAIL U  
SCALE 10:1

|  |   |                                       |  |                          |                          |
|--|---|---------------------------------------|--|--------------------------|--------------------------|
| FUNCTIONAL SYMBOLS<br>FA = 0<br>FC = 0<br>FD = 0     | THIS DRAWING CONTAINS INFORMATION THAT IS PROPRIETARY TO MOLEX ELECTRONIC TECHNOLOGIES, LLC AND SHOULD NOT BE USED WITHOUT WRITTEN PERMISSION | SCALE: 5:1                            | CURRENT REV DESC: UPDATED BASIC DIMENSIONS IN SECTION B-B ON SHEET 2 |                          |                          |
|  | DIMENSION UNITS: mm   | GENERAL TOLERANCES (UNLESS SPECIFIED) | EC NO: 649575  |                          |                          |
| DIVISIONAL SYMBOLS                                   | ANGULAR TOL ± °   | 4 PLACES ±                            | DRWN: YPENG47  | 2020/11/19               |                          |
|  | 3 PLACES ±  | 2 PLACES ±                            | CHK'D: JRUTTER   | 2020/11/23               |                          |
| DRAFT WHERE APPLICABLE MUST REMAIN WITHIN DIMENSIONS |   | 0 PLACES ±                            | APPR: MVANSLAMBROU   | 2020/11/25               | PRODUCT CUSTOMER DRAWING |
| THIRD ANGLE PROJECTION                               |   | INITIAL REVISION:                     | DRWN: SPEMMARAJU   | 2015/11/03               | DOCUMENT NUMBER          |
| D-DRAWING  |   | APPR: KDEKOSKI                        | 2016/03/24   | 2016/03/24               | DOC TYPE                 |
| SERIES: D-SIZE 160027                                |   | MATERIAL NUMBER                       |  | CUSTOMER                 | REVISION                 |
| SHEET NUMBER: 2 OF 3                                 |   | GENERAL MARKET                        |  | SD-160027-002 PSD 000 C1 |                          |

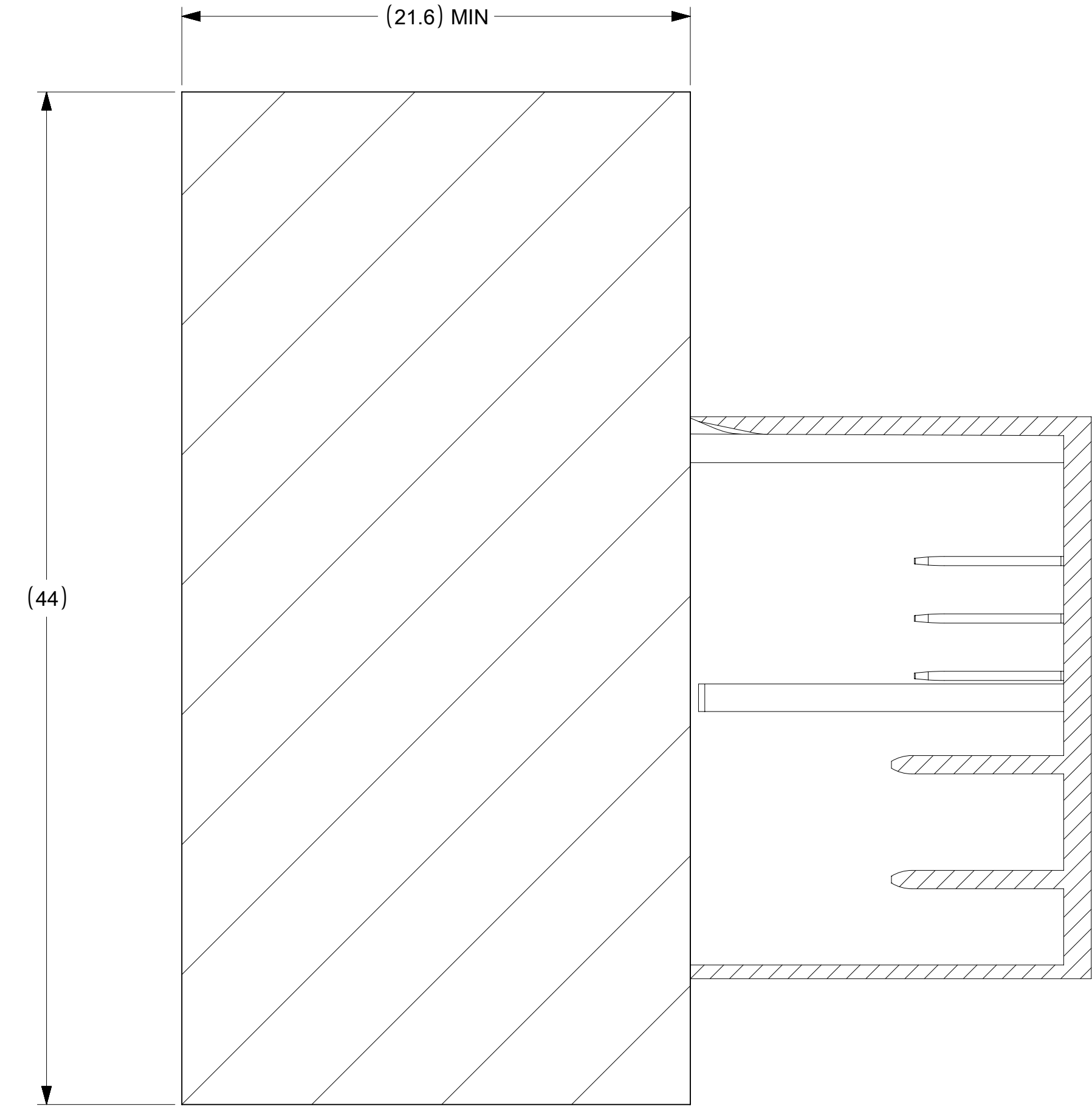
PACKAGE SPACE  
FOR UNMATED  
CONNECTOR



PACKAGE SPACE  
FOR CONNECTOR



PACKAGE SPACE FOR  
MATED CONNECTOR  
WITH COVER



|   |   |  |  |                                   |   |                               |
|---|---|--|--|-----------------------------------|---|-------------------------------|
| <b>FUNCTIONAL SYMBOLS</b><br>$F_A = 0$<br>$F_C = 0$<br>$F_P = 0$<br><b>DIVISIONAL SYMBOLS</b> | THIS DRAWING CONTAINS INFORMATION THAT IS PROPRIETARY TO MOLEX ELECTRONIC TECHNOLOGIES, LLC AND SHOULD NOT BE USED WITHOUT WRITTEN PERMISSION |  | CURRENT REV DESC: UPDATED BASIC DIMENSIONS IN SECTION B-B ON SHEET 2 |                                   |   |                               |
|   | DIMENSION UNITS<br><b>mm</b>  | SCALE<br><b>1:1</b>                        | GENERAL TOLERANCES (UNLESS SPECIFIED)                                |                                   |   |                               |
|   | ANGULAR TOL $\pm$   |  | 4 PLACES $\pm$   |                                   | 2020/11/19<br>2020/11/23<br>2020/11/25                  |                               |
|   | 3 PLACES $\pm$  |  | 2 PLACES $\pm$   |                                   | INITIAL REVISION:<br>DRWN: SPEMMARAJU<br>APPR: KDEKOSKI |                               |
| 1 PLACE $\pm$   |   | 0 PLACES $\pm$                             |  | 2015/11/03<br>2016/03/24          |   |                               |
| DRAFT WHERE APPLICABLE MUST REMAIN WITHIN DIMENSIONS  |   | THIRD ANGLE PROJECTION                     | DRAWING<br><b>D-SIZE</b>   | SERIES<br><b>160027</b>           | DOCUMENT NUMBER<br><b>SD-160027-002</b>                 | DOC TYPE<br><b>PSD</b>        |
| DOCUMENT STATUS<br><b>P1</b>  |   | RELEASE DATE<br><b>2020/11/25 23:16:39</b> |  | CUSTOMER<br><b>GENERAL MARKET</b> |   | DOC PART<br><b>000</b>        |
| SHEET NUMBER<br><b>3 OF 3</b>   |   | REVISION<br><b>C1</b>                      |  | MATERIAL NUMBER                   |   | SHEET NUMBER<br><b>3 OF 3</b> |