



产品编号 : 16020078

Product Description : SL Crimp Terminal, Series 70021, Male, with 0.76µm Selective Gold (Au) Plated Contact, 24-30 AWG, Reel

系列号 : 70021

状态 : Active

Product Category : Crimp Terminals

工程编号 : 70021-0008

Packaging Alternative : 0016020110 (Bag)



文件和资源

图纸

图纸 016020078_sd.pdf

规格

产品规格 PS-70021-001.pdf

产品规格 PS-70400-001.pdf

产物环境合规

合规

GADSL/IMDS	Not Relevant
China RoHS	
EU ELV	Not Relevant
Low-Halogen Status	Low-Halogen per IEC 61249-2-21
REACH SVHC	Not Contained per D(2023)3788-DC (14 Jun 2023)
EU RoHS	Compliant per EU 2015/863

多部分产品合规性声明

- Eu RoHS
- REACH SVHC
- Low-Halogen

多部分行业合规性文件

- IPC 1752A Class C

- IPC 1752A Class D
- Molex Product Compliance Declaration
- IEC-62474
- chemSHERPA (xml)

欧盟 RoHS 合格证书

产品详情

常规

状态	活动
类别	Crimp Terminals
系列	70021
说明	SL Crimp Terminal, Series 70021, Male, with 0.76 μ m Selective Gold (Au) Plated Contact, 24-30 AWG, Reel
应用	Signal, Wire-to-Wire
产品系列	SL Modular Connectors
产品名称	SL
UPC	800753595972

物理

性别	男
材料 - 金属	Phosphor Bronze
材料 - 接合部位电镀	金牌
材料 - 终端电镀	Tin
净重	0.099/g
包装形式	Reel
最薄镀层 - 接合部位	0.762 μ m
最薄镀层 - 端接	1.905 μ m
终端界面类型	Crimp or Compression
导线绝缘直径	1.52mm max.
线径规格 (AWG)	24, 26, 28, 30
线缆尺寸mm ²	不适用

进程

无铅	不适用
----	-----

可连接使用部件

描述	产品编号
SL Single Row Crimp Housings and CPA Retainers	<u>70066</u>
SL Single Row Crimp Housings	<u>70107</u>

施工工具

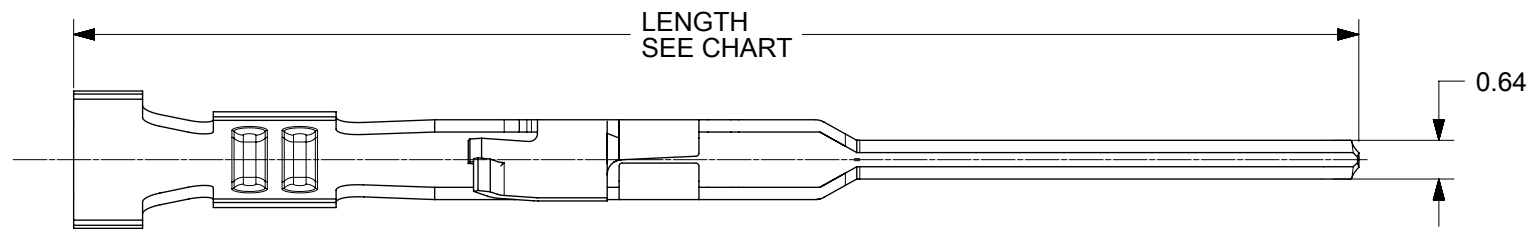
全局

描述	产品编号
Insertion Tool for 70021, 70028, 70110, 71851 Terminals / Extraction Tool for 91821 Terminals	<u>0011020022</u>
Hand Crimp Tool for SL Crimp Terminals, 24-30 AWG	<u>2002187000</u>
FineAdjust Applicator for Male Crimp Terminal, 24-30 AWG Wire	<u>0639003400</u>
FineAdjust Applicator for Crimp Terminal, Male, 28 AWG, 41 Strands/44 AWG Wire	<u>0639014500</u>
T2 Terminator Tooling Die	<u>0639103400</u>

施工工具

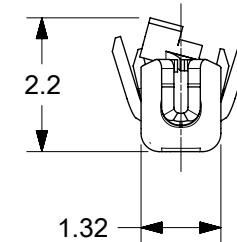
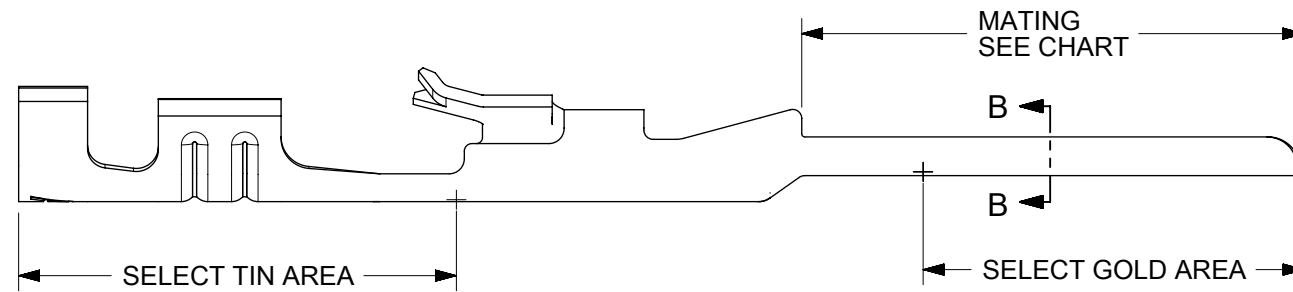
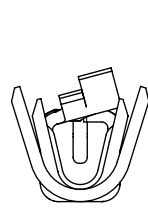
日本

描述	产品编号
Applicator for M211A Bench Press, 22-30 AWG Wire	<u>0570173000</u>
Hand Insertion Tool	<u>0570336000</u>



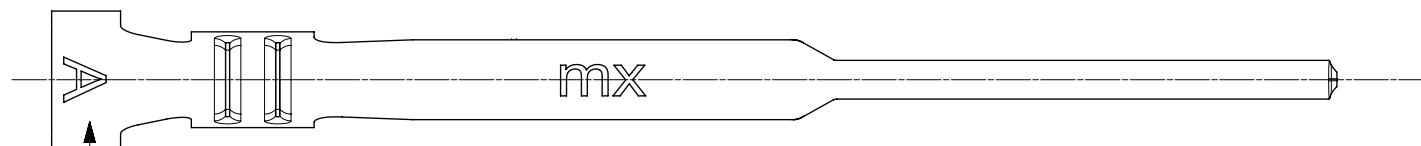
NOTES:

1. MATERIAL: 0.20 THICK PHOS BRONZE
2. FINISH:
 OVERALL TIN: 3.8 MICROMETERS MIN OVER NICKEL
 207 = SELECT GOLD IN AREA SHOWN: 0.38 MICROMETERS MIN
 SELECT TIN IN AREA SHOWN: 2.0 MICROMETERS MIN BOTH OVER NICKEL
 206 = SELECT GOLD IN AREA SHOWN: 0.75 MICROMETERS MIN
 SELECT TIN IN AREA SHOWN: 2.0 MICROMETERS MIN BOTH OVER NICKEL
3. PRODUCT SPECIFICATION: PS-70021
4. TERMINALS FOR USE WITH HOUSING SERIES: 70066 AND 70107



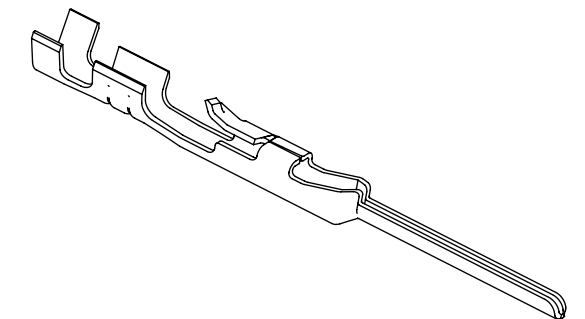
PLATING NOT REQUIRED ON INSIDE AREA

SECTION B-B
BACKGROUND OMITTED



WIRE SIZE IDENTIFICATION LETTER IS STAMPED INTO PART IN THIS AREA:

- A = 24-30 AWG WIRE WITH 1.52 MAX INSULATION DIA
 - B = 32-36 AWG WIRE WITH 0.64 MAX INSULATION DIA
 - C = 22-24 AWG WIRE WITH 1.63 MAX INSULATION DIA
- SEE CHART



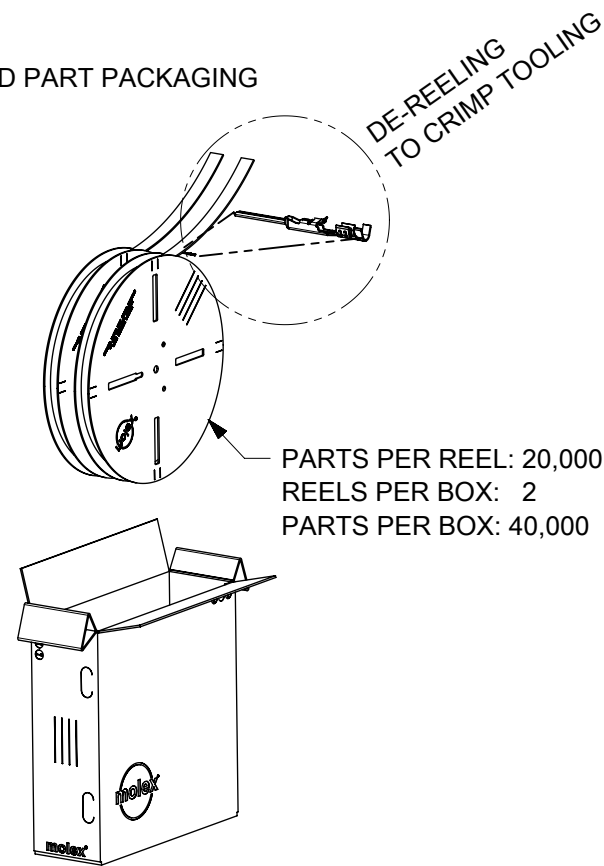
SYMBOLS ▽ = 0 ▽ = 0 ▽ = 0 ▽ = 0 ▽ = 0 ▽ = 0 ▽ = 0 ▽ = 0 ▽ = 0 ▽ = 0	THIS DRAWING CONTAINS INFORMATION THAT IS PROPRIETARY TO MOLEX ELECTRONIC TECHNOLOGIES, LLC AND SHOULD NOT BE USED WITHOUT WRITTEN PERMISSION		CURRENT REV DESC: ADD PK SPEC		molex SL MALE CRIMP TERMINAL			
	DIMENSION UNITS	SCALE	EC NO: 615128					DOCUMENT NUMBER
	mm	5:1	DRWN: GJEEVANSURES 2018/12/05		700210000-SD	PSD	000	A5
	GENERAL TOLERANCES (UNLESS SPECIFIED)		CHK'D: SCS02 2019/04/05		PRODUCT CUSTOMER DRAWING			
	ANGULAR TOL ± °		APPR: ISHWARG 2019/04/05		MATERIAL NUMBER			
	4 PLACES ±		INITIAL REVISION:		CUSTOMER			
	3 PLACES ±		DRWN: KSAMIEC 2017/09/01		SERIES			
	2 PLACES ± 0.25		APPR: FSMITH 2017/09/12		THIRD ANGLE PROJECTION			
	1 PLACE ± 0.35		DRAWING		B-SIZE			
	0 PLACES ± 0.0		DRAFT WHERE APPLICABLE MUST REMAIN WITHIN DIMENSIONS		70021			
SHEET NUMBER		1 OF 2						

TERMINAL STAMPED WITH LETTER "A" FOR USE WITH 24-30 AWG WIRE								
MATERIAL NO	ENGINEERING NO	PACKING	PLATING	LENGTH	MATING	STAMPED LETTER	WIRE SIZE	MAX INS. DIA
16020105	70021-0004	REEL	OVERALL TIN	21.39	8.43	A	24-30 AWG	1.52
16020108	70021-0204	LOOSE						
16020077	70021-0006	REEL	207 = 0.38 GOLD					
16020109	70021-0206	LOOSE						
16020078	70021-0008	REEL	206 = 0.75 GOLD					
16020110	70021-0208	LOOSE						

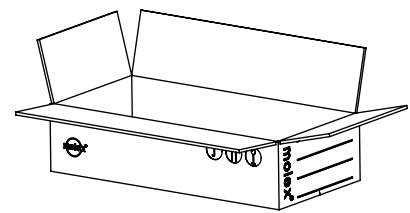
TERMINAL STAMPED WITH LETTER "C" FOR USE WITH 22-24 AWG WIRE								
MATERIAL NO	ENGINEERING NO	PACKING	PLATING	LENGTH	MATING	STAMPED LETTER	WIRE SIZE	MAX INS. DIA
16020107	70021-0021	REEL	OVERALL TIN	21.39	8.43	C	22-24 AWG	1.63
16020114	70021-0221	LOOSE						
16020081	70021-0023	REEL	207 = 0.38 GOLD					
16020115	70021-0223	LOOSE						
16020116	70021-0025	REEL	206 = 0.75 GOLD					
16020117	70021-0225	LOOSE						
700210117	70021-0117							
700210081	NA	NA	207 = 0.38 GOLD	19.61	6.65			
700211021	NA	NA	OVERALL TIN					
700211023	NA	REEL	206 = 0.75 GOLD					

TERMINAL STAMPED WITH LETTER "B" FOR USE WITH 32-36 AWG WIRE								
MATERIAL NO	ENGINEERING NO	PACKING	PLATING	LENGTH	MATING	STAMPED LETTER	WIRE SIZE	MAX INS. DIA
16020106	70021-0013	REEL	OVERALL TIN	21.39	8.43	B	32-36 AWG	0.64
16020111	70021-0213	LOOSE						
16020079	70021-0015	REEL	207 = 0.38 GOLD					
16020112	70021-0215	LOOSE						
16020080	70021-0017	REEL	206 = 0.75 GOLD					
16020113	70021-0217	LOOSE						

REELED PART PACKAGING



PARTS PER BAG: 6,000
BAGS PER BOX: 2
PARTS PER BOX: 12,000



LOOSE PART PACKAGING

SYMBOLS	THIS DRAWING CONTAINS INFORMATION THAT IS PROPRIETARY TO MOLEX ELECTRONIC TECHNOLOGIES, LLC AND SHOULD NOT BE USED WITHOUT WRITTEN PERMISSION											
	DIMENSION UNITS		SCALE		CURRENT REV DESC: ADD PK SPEC						molex	
	mm		1:10									
	GENERAL TOLERANCES (UNLESS SPECIFIED)		ANGULAR TOL		EC NO: 615128						SL MALE CRIMP TERMINAL	
	4 PLACES ±		°		DRWN: GJEEVANSURES 2018/12/05							
	3 PLACES ±				CHK'D: SCS02 2019/04/05						PRODUCT CUSTOMER DRAWING	
	2 PLACES ± 0.25				APPR: ISHWARG 2019/04/05							
	1 PLACE ± 0.35				INITIAL REVISION:						DOCUMENT NUMBER	
	0 PLACES ± 0.0				DRWN: KSAMIEC 2017/09/01							
	DRAFT WHERE APPLICABLE MUST REMAIN WITHIN DIMENSIONS		THIRD ANGLE PROJECTION		DRAWING		SERIES		MATERIAL NUMBER		CUSTOMER	
		B-SIZE		70021		700210000-SD		PSD 000		A5		