



产品编号：[1726732004](#)
Product Description：[7.50mm Pitch Super Sabre Plug Crimp Housing, UL 94V-0, 4 Circuits](#)
系列号：[172673](#)
状态：[Active](#)
Product Category：[Connector Housings](#)



文件和资源

图纸

[图纸 1726732004_sd.pdf](#)

3D 模型和设计文件


[3D模型 1726732004_stp.zip](#)

规格

[包装规格 PK-43680-001-001.pdf](#)
[产品规格 PS-171825-001-001.pdf](#)
[测试摘要 TS-171825-001-001.pdf](#)

产物环境合规

合规

GADSL/IMDS	Not Relevant
China RoHS	
EU ELV	Not Relevant
Low-Halogen Status	Low-Halogen per IEC 61249-2-21
REACH SVHC	Not Contained per D(2023)3788-DC (14 Jun 2023)
EU RoHS	Compliant per EU 2015/863

[多部分产品合规性声明](#)

- Eu RoHS
- REACH SVHC
- Low-Halogen

[多部分行业合规性文件](#)

- IPC 1752A Class C

- IPC 1752A Class D
- Molex Product Compliance Declaration
- IEC-62474
- chemSHERPA (xml)

欧盟 RoHS 合格证书

产品详情

常规

状态	活动
类别	Connector Housings
系列	172673
说明	7.50mm Pitch Super Sabre Plug Crimp Housing, UL 94V-0, 4 Circuits
应用	Power, Wire-to-Board, Wire-to-Wire
产品系列	Super Sabre Connector System
产品名称	Super Sabre
UPC	889056025980

机构

CSA	LR19980
UL	E29179

电气

每触点最大电流	34.0A
---------	-------

物理

电路数（最多）	4
颜色-树脂	黑色
阻燃性	94V-0
性别	Plug
符合灼热丝规范	否
插接极性	是
锁定插接部位	是
材料 - 树脂	Nylon

净重	6.105/g
行数	1
包装形式	Carton
面板安装式	否
间距 - 插配接口	7.50mm
有极性的插配件	是
可堆叠的	否
运行温度范围	-40° to +125° C

进程

无铅	不适用
----	-----

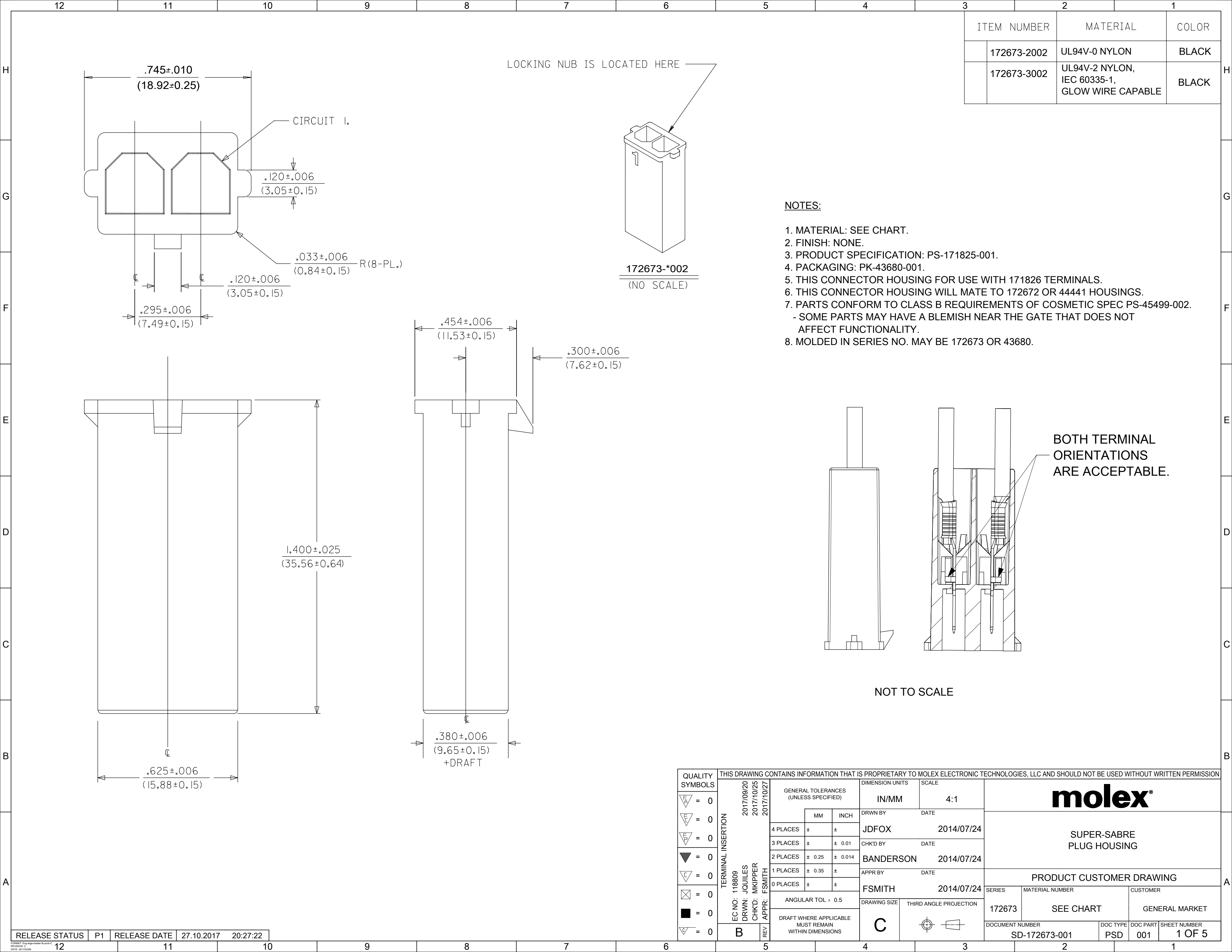
可配插/可连接使用的产品

可配插部件

描述	产品编号
Super Sabre Single Row Receptacle Housings	<u>172672</u>

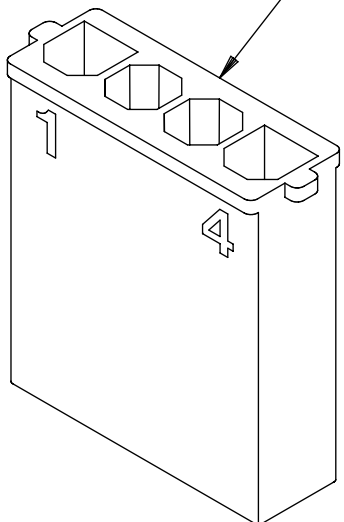
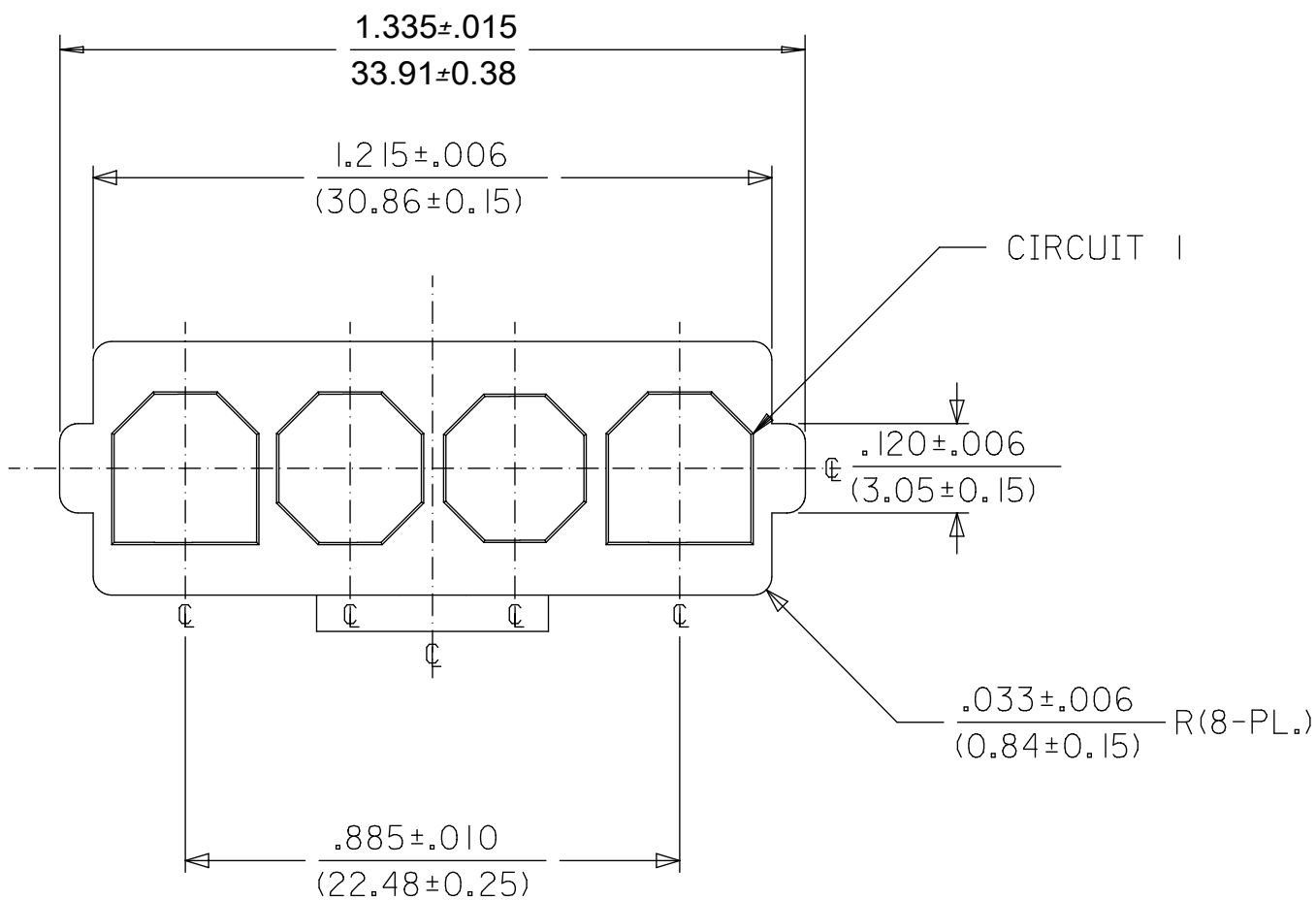
可连接使用部件

描述	产品编号
Super Sabre Male Crimp Terminals	<u>171826</u>



ITEM NUMBER		MATERIAL	COLOR
	172673-2004	UL94V-0 NYLON	BLACK
	172673-3004	UL94V-2 NYLON IEC 60335-1 GLOW WIRE CAPABLE	BLACK

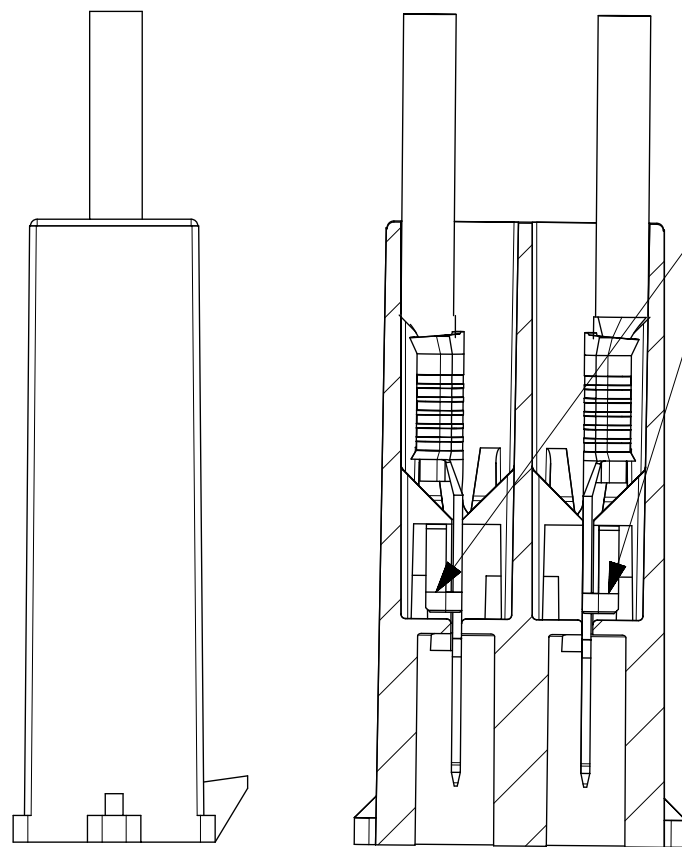
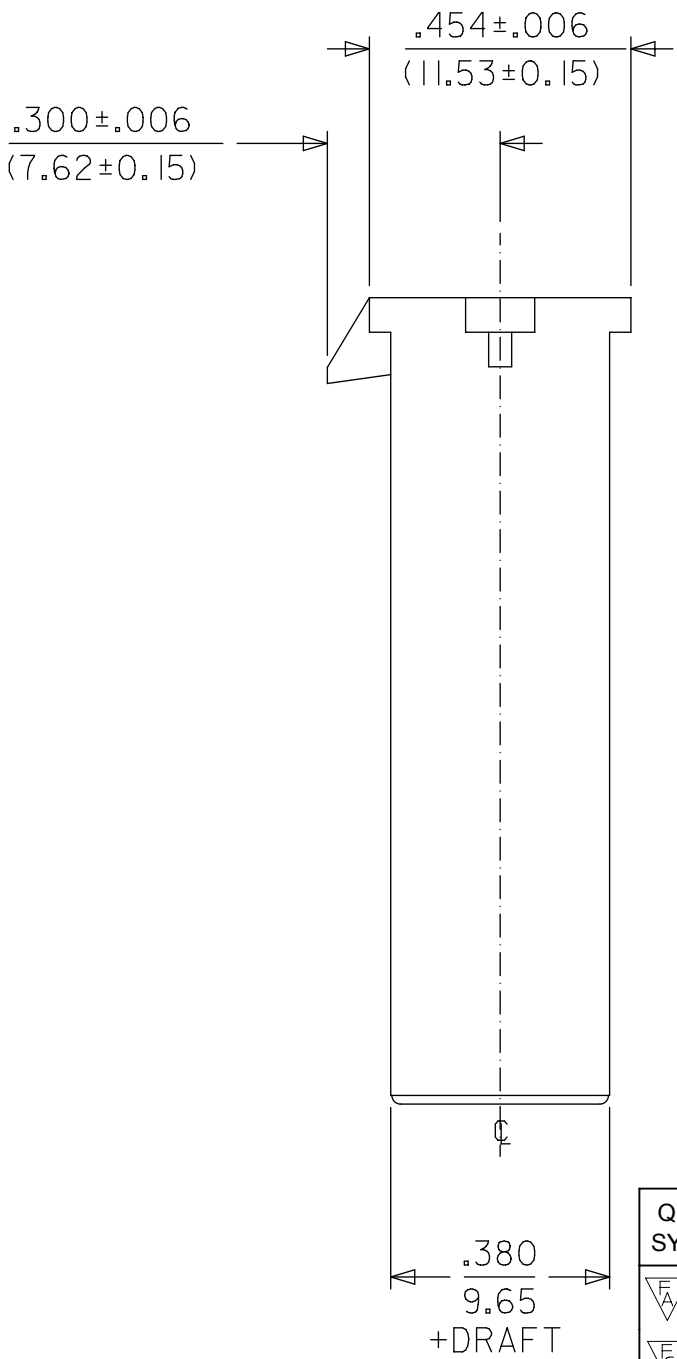
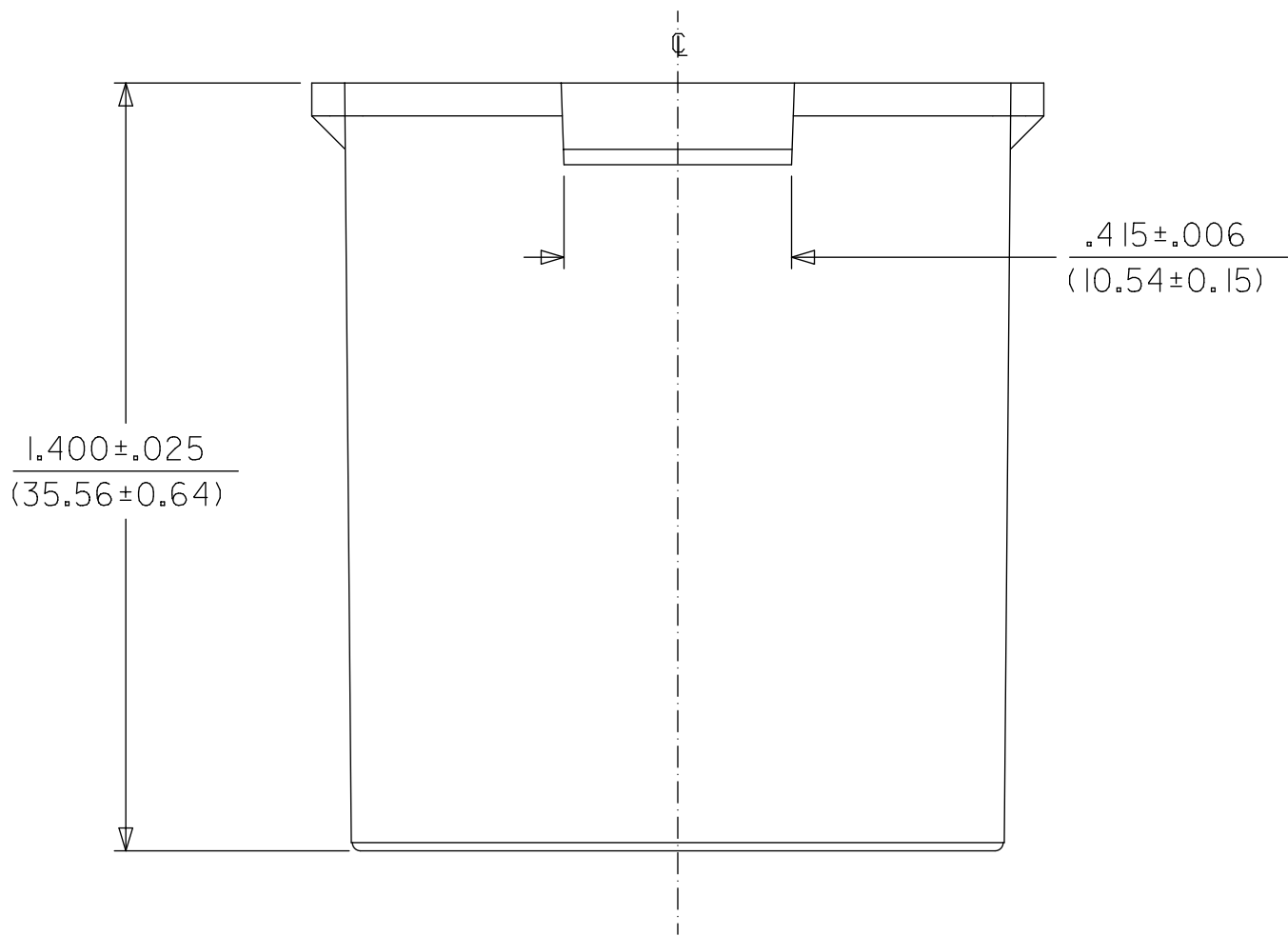
LOCKING NUB IS LOCATED HERE



172673-*004
(NO SCALE)

NOTES:

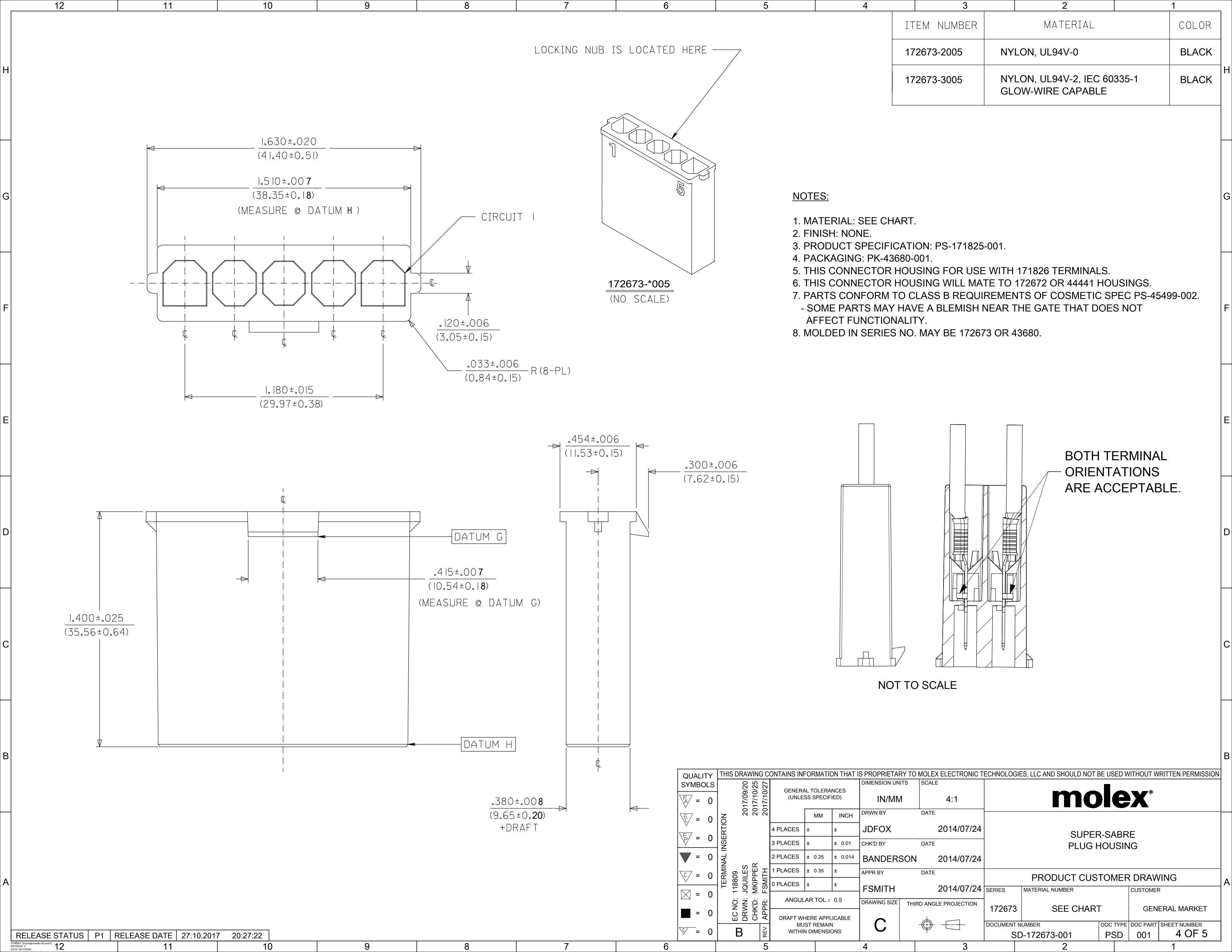
1. MATERIAL: SEE CHART.
2. FINISH: NONE.
3. PRODUCT SPECIFICATION: PS-171825-001.
4. PACKAGING: PK-43680-001.
5. THIS CONNECTOR HOUSING FOR USE WITH 171826 TERMINALS.
6. THIS CONNECTOR HOUSING WILL MATE TO 172672 OR 44441 HOUSINGS.
7. PARTS CONFORM TO CLASS B REQUIREMENTS OF COSMETIC SPEC PS-45499-002.
- SOME PARTS MAY HAVE A BLEMISH NEAR THE GATE THAT DOES NOT AFFECT FUNCTIONALITY.
8. MOLDED IN SERIES NO. MAY BE 172673 OR 43680.

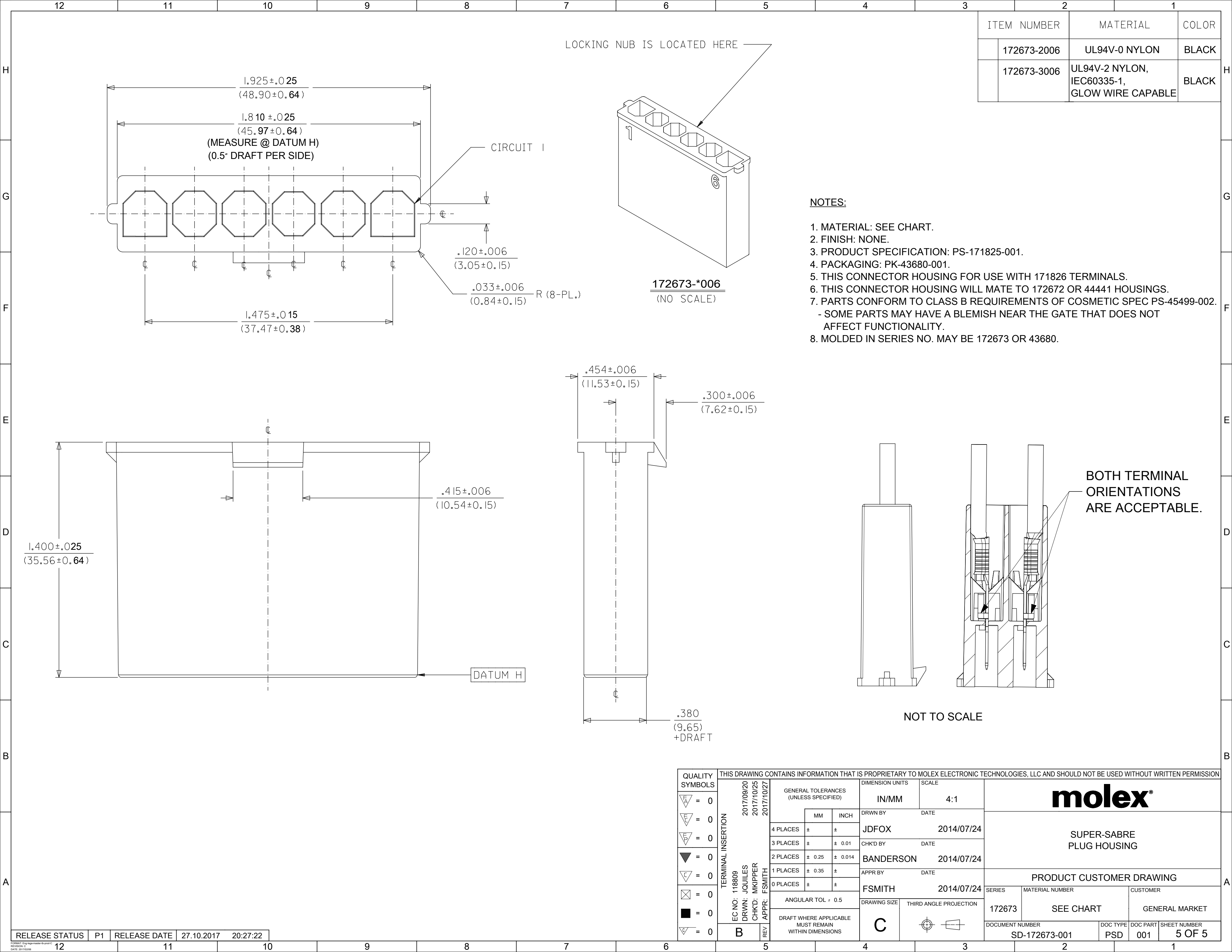


BOTH TERMINAL
ORIENTATIONS
ARE ACCEPTABLE.

NOT TO SCALE

QUALITY SYMBOLS		THIS DRAWING CONTAINS INFORMATION THAT IS PROPRIETARY TO MOLEX ELECTRONIC TECHNOLOGIES, LLC AND SHOULD NOT BE USED WITHOUT WRITTEN PERMISSION														
	= 0	TERMINAL INSERTION EC NO: 118809 DRWN: JQUILES CHKD: MKIPPER REV APPR: FSMITH	2017/09/20 2017/10/25 2017/10/27	GENERAL TOLERANCES (UNLESS SPECIFIED)		DIMENSION UNITS		SCALE								
	= 0					IN/MM		4:1								
	= 0				MM	INCH	DRWN BY		DATE		SUPER-SABRE PLUG HOUSING					
	= 0			4 PLACES	±	±	JDFOX		2014/07/24							
	= 0			3 PLACES	±	± 0.01	CHK'D BY		DATE							
	= 0			2 PLACES	± 0.25	± 0.014	BANDERSON		2014/07/24		PRODUCT CUSTOMER DRAWING					
	= 0			1 PLACES	± 0.35	±	APPR BY		DATE							
	= 0			0 PLACES	±	±	FSMITH		2014/07/24		SERIES		MATERIAL NUMBER		CUSTOMER	
	= 0			ANGULAR TOL ± 0.5		DRAWING SIZE		THIRD ANGLE PROJECTION		172673		SEE CHART		GENERAL MARKET		
	= 0			DRAFT WHERE APPLICABLE MUST REMAIN WITHIN DIMENSIONS				DOCUMENT NUMBER				DOC TYPE		DOC PART		SHEET NUMBER
	= 0	SD-172673-001						PSD		001		3 OF 5				






ITEM NUMBER		MATERIAL	COLOR
	172673-2006	UL94V-0 NYLON	BLACK
	172673-3006	UL94V-2 NYLON, IEC60335-1, GLOW WIRE CAPABLE	BLACK

NOTES:

1. MATERIAL: SEE CHART.
2. FINISH: NONE.
3. PRODUCT SPECIFICATION: PS-171825-001.
4. PACKAGING: PK-43680-001.
5. THIS CONNECTOR HOUSING FOR USE WITH 171826 TERMINALS.
6. THIS CONNECTOR HOUSING WILL MATE TO 172672 OR 44441 HOUSINGS.
7. PARTS CONFORM TO CLASS B REQUIREMENTS OF COSMETIC SPEC PS-45499-002.
- SOME PARTS MAY HAVE A BLEMISH NEAR THE GATE THAT DOES NOT AFFECT FUNCTIONALITY.
8. MOLDED IN SERIES NO. MAY BE 172673 OR 43680.

BOTH TERMINAL
ORIENTATIONS
ARE ACCEPTABLE.

NOT TO SCALE

QUALITY SYMBOLS		THIS DRAWING CONTAINS INFORMATION THAT IS PROPRIETARY TO MOLEX ELECTRONIC TECHNOLOGIES, LLC AND SHOULD NOT BE USED WITHOUT WRITTEN PERMISSION																		
<div><div><div><div><div></div></div></div><div><div><div></div></div></div><div><div><div></div></div></div><div><div><div></div></div></div><div><div><div></div></div></div><div><div><div></div></div></div><div><div><div></div></div></div><div><div><div></div></div></div><div><div><div></div></div></div><div><div><div></div></div></div></div></div>	TERMINAL INSERTION	2017/09/20 2017/10/25 2017/10/27	EC NO: 118809 DRWN: JQUILES CHKD: MKIPPER APPR: FSMITH	GENERAL TOLERANCES (UNLESS SPECIFIED)	DIMENSION UNITS		SCALE		<div><div><div></div></div><div>molex®</div></div>											
					IN/MM		4:1													
					MM		INCH		DRWN BY		DATE		SUPER-SABRE PLUG HOUSING							
					4 PLACES ±		±		JDFOX		2014/07/24									
					3 PLACES ±		± 0.01		CHK'D BY		DATE									
					2 PLACES ± 0.25		± 0.014		BANDERSON		2014/07/24									
					1 PLACES ± 0.35		±		APPR BY		DATE		PRODUCT CUSTOMER DRAWING							
					0 PLACES ±		±		FSMITH		2014/07/24									
					ANGULAR TOL ± 0.5				DRAWING SIZE		THIRD ANGLE PROJECTION		SERIES		MATERIAL NUMBER		CUSTOMER			
					DRAFT WHERE APPLICABLE MUST REMAIN WITHIN DIMENSIONS				C				172673		SEE CHART		GENERAL MARKET			
								DOCUMENT NUMBER		DOC TYPE		DOC PART		SHEET NUMBER						
								SD-172673-001		PSD		001		5 OF 5						