



产品编号 : 1726732006
Product Description : 7.50mm Pitch Super Sabre Plug Crimp Housing, UL 94V-0, 6 Circuits
系列号 : 172673
状态 : Active
Product Category : Connector Housings



文件和资源


图纸
[图纸 1726732006_sd.pdf](#)

3D 模型和设计文件
[3D模型 1726732006_stp.zip](#)

规格
[包装规格 PK-43680-001-001.pdf](#)
[产品规格 PS-171825-001-001.pdf](#)
[测试摘要 TS-171825-001-001.pdf](#)

产物环境合规

合规

GADSL/IMDS	Not Relevant
China RoHS	
EU ELV	Not Relevant
Low-Halogen Status	Low-Halogen per IEC 61249-2-21
REACH SVHC	Not Contained per D(2023)3788-DC (14 Jun 2023)
EU RoHS	Compliant per EU 2015/863

[多部分产品合规性声明](#)
- Eu RoHS
- REACH SVHC
- Low-Halogen

[多部分行业合规性文件](#)
- IPC 1752A Class C

- IPC 1752A Class D
- Molex Product Compliance Declaration
- IEC-62474
- chemSHERPA (xml)

欧盟 RoHS 合格证书

产品详情

常规

状态	活动
类别	Connector Housings
系列	172673
说明	7.50mm Pitch Super Sabre Plug Crimp Housing, UL 94V-0, 6 Circuits
应用	Power, Wire-to-Board, Wire-to-Wire
产品系列	Super Sabre Connector System
产品名称	Super Sabre
UPC	889056026000

机构

CSA	LR19980
UL	E29179

电气

每触点最大电流	34.0A
---------	-------

物理

电路数（最多）	6
颜色-树脂	黑色
阻燃性	94V-0
性别	Plug
符合灼热丝规范	否
插接极性	是
锁定插接部位	是
材料 - 树脂	Nylon

净重	8.851/g
行数	1
包装形式	Carton
面板安装式	否
间距 - 插配接口	7.50mm
有极性的插配件	是
可堆叠的	否
运行温度范围	-40° to +125° C

进程

无铅	不适用
----	-----

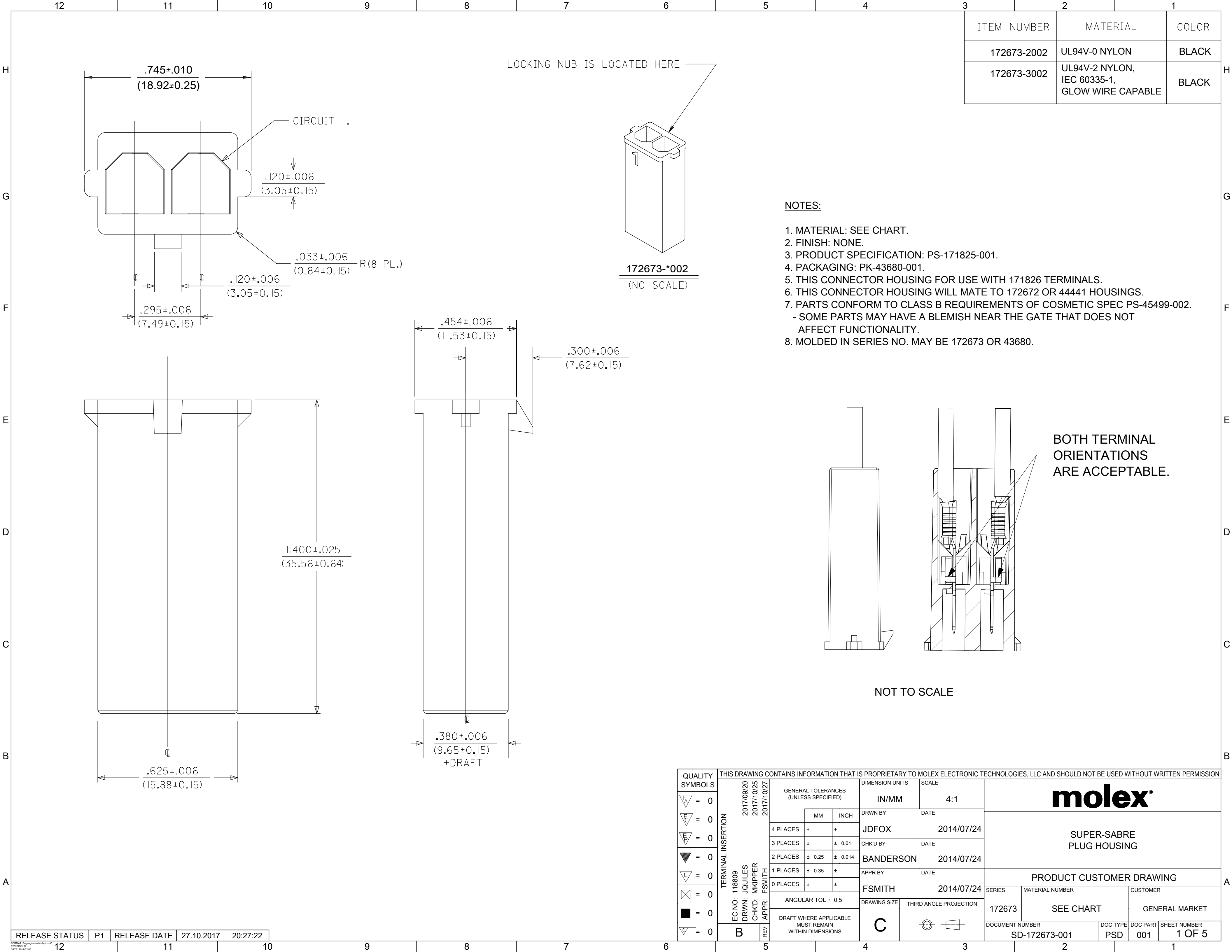
可配插/可连接使用的产品

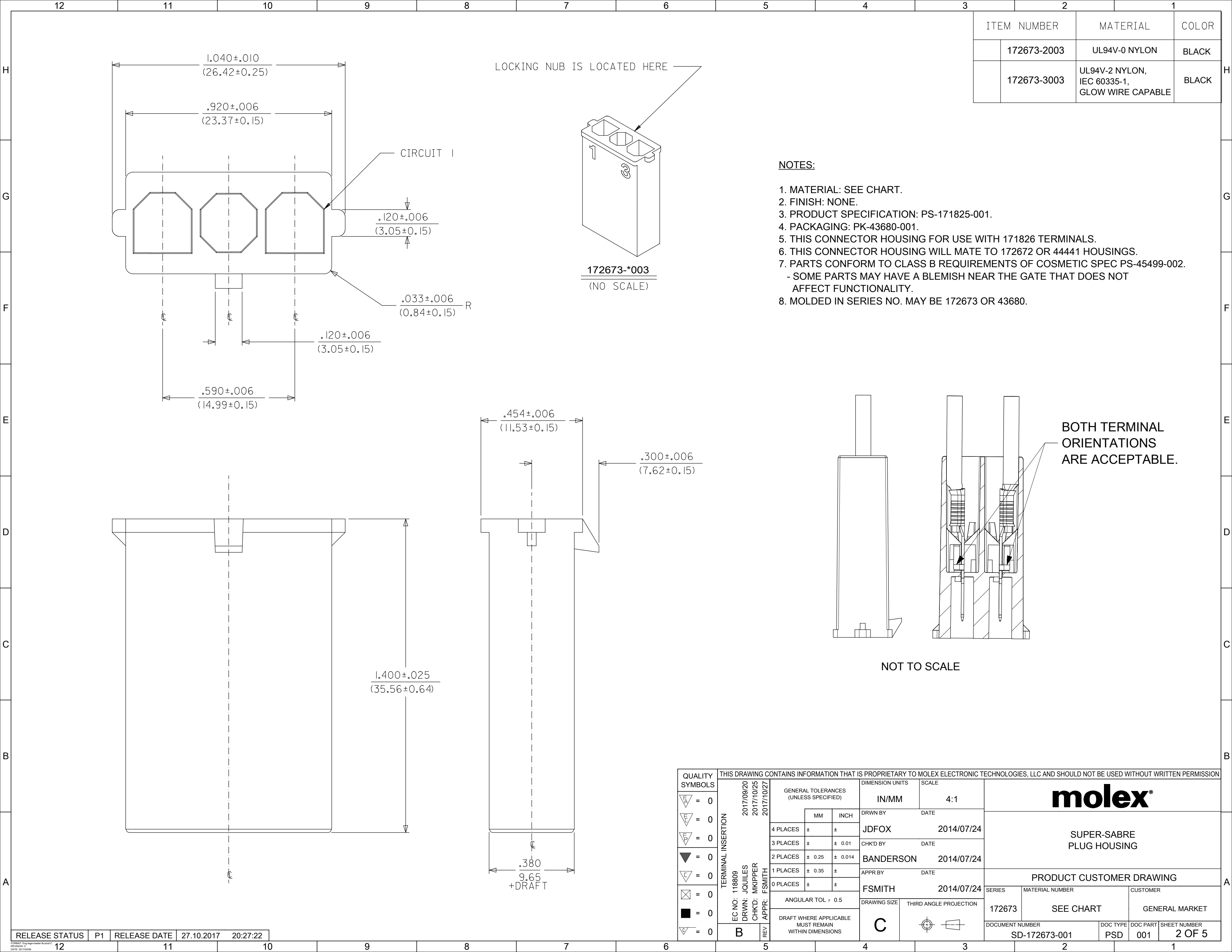
可配插部件

描述	产品编号
Super Sabre Single Row Receptacle Housings	<u>172672</u>

可连接使用部件

描述	产品编号
Super Sabre Male Crimp Terminals	<u>171826</u>



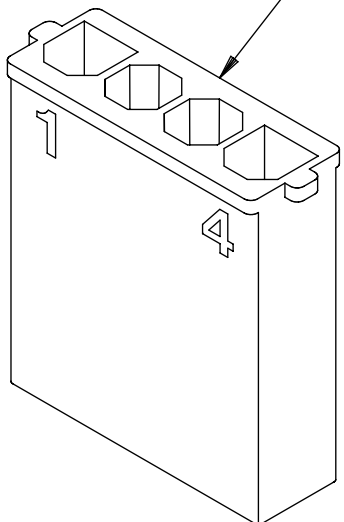
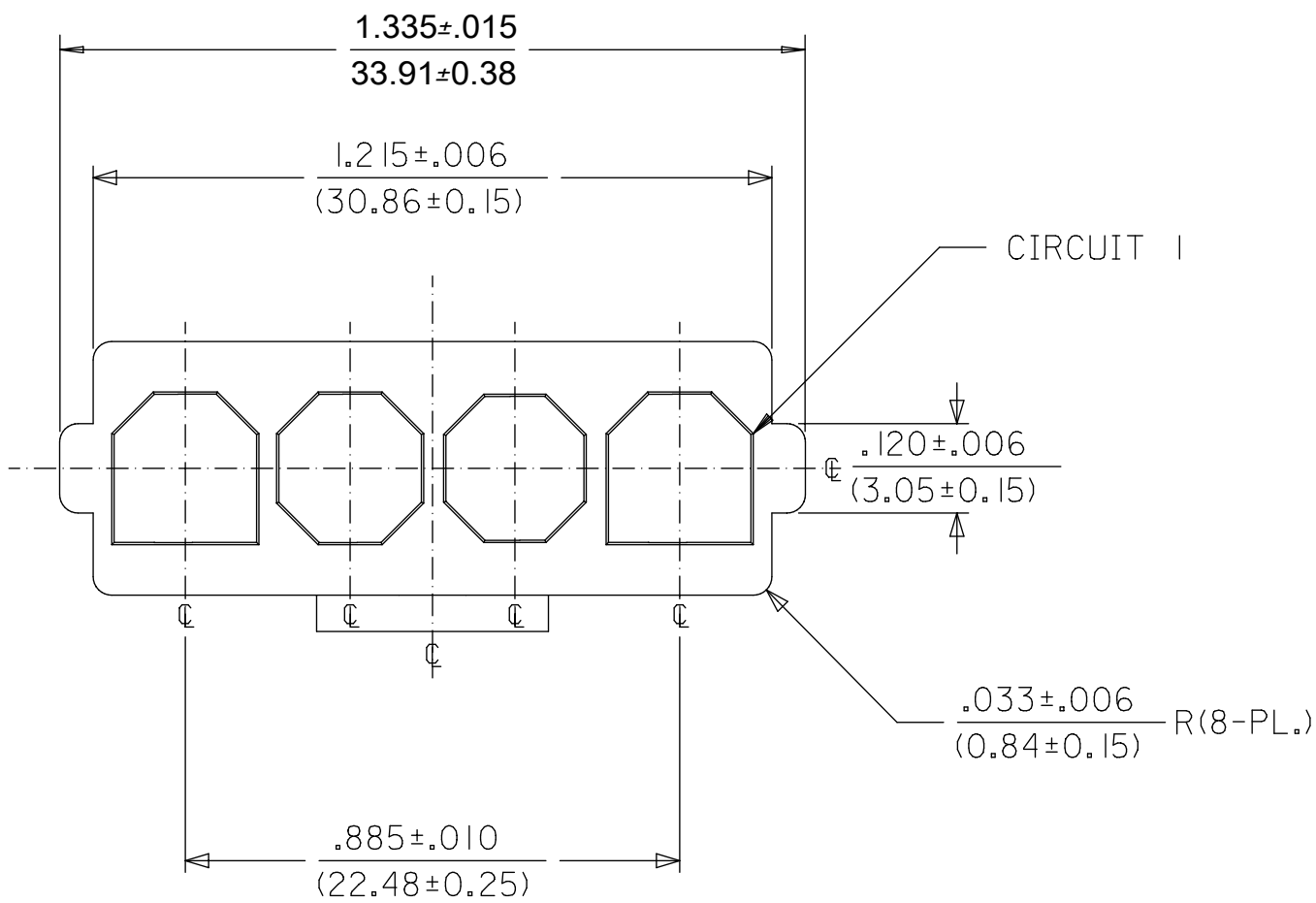


QUALITY SYMBOLS		THIS DRAWING CONTAINS INFORMATION THAT IS PROPRIETARY TO MOLEX ELECTRONIC TECHNOLOGIES, LLC AND SHOULD NOT BE USED WITHOUT WRITTEN PERMISSION													
	= 0	TERMINAL INSERTION EC NO: 118809 DRWN: JQUILES CHKD: MKIPPER REV APPR: FSMITH	2017/09/20 2017/10/25 2017/10/27	GENERAL TOLERANCES (UNLESS SPECIFIED)			DIMENSION UNITS		SCALE		<div>molex®</div> <div>SUPER-SABRE PLUG HOUSING</div> <div>PRODUCT CUSTOMER DRAWING</div>				
	= 0						IN/MM		4:1						
	= 0			4 PLACES ± ±			DRWN BY		DATE						
	= 0						JDFOX		2014/07/24						
	= 0			3 PLACES ± ± 0.01			CHK'D BY		DATE		<div>SERIES</div> <div>MATERIAL NUMBER</div> <div>CUSTOMER</div> <div>172673</div> <div>SEE CHART</div> <div>GENERAL MARKET</div> <div>DOCUMENT NUMBER</div> <div>SD-172673-001</div> <div>DOC TYPE</div> <div>PSD</div> <div>DOC PART</div> <div>001</div> <div>SHEET NUMBER</div> <div>2 OF 5</div>				
	= 0						2 PLACES ± 0.25 ± 0.014		BANDERSON						
	= 0			1 PLACES ± 0.35 ±			APPR BY		DATE						
	= 0						0 PLACES ± ±		FSMITH						
	= 0			ANGULAR TOL ± 0.5			DRAWING SIZE		THIRD ANGLE PROJECTION						
	= 0			DRAFT WHERE APPLICABLE MUST REMAIN WITHIN DIMENSIONS			C								

RELEASE STATUS	P1	RELEASE DATE	27.10.2017	20:27:22
----------------	----	--------------	------------	----------

ITEM NUMBER		MATERIAL	COLOR
	172673-2004	UL94V-0 NYLON	BLACK
	172673-3004	UL94V-2 NYLON IEC 60335-1 GLOW WIRE CAPABLE	BLACK

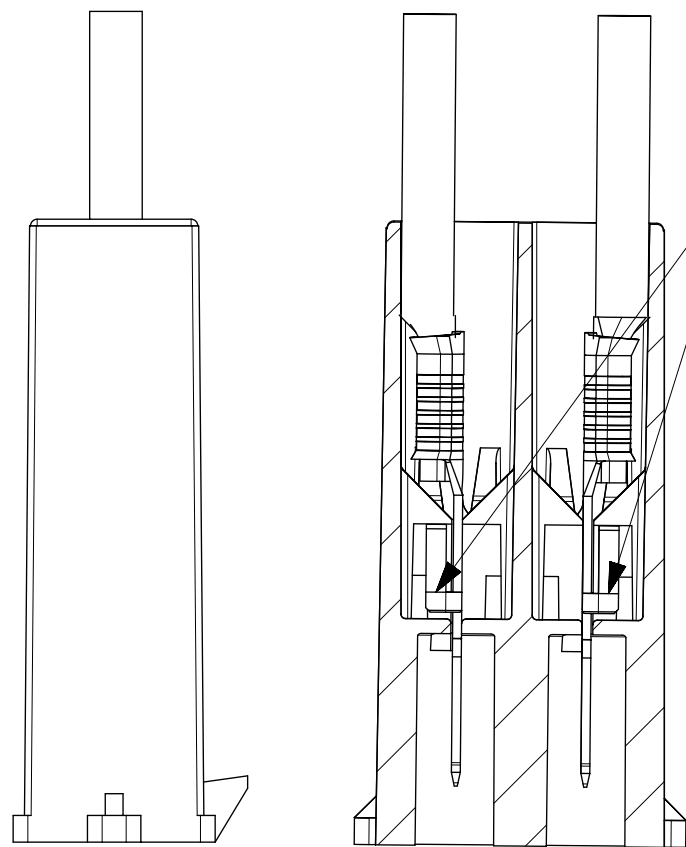
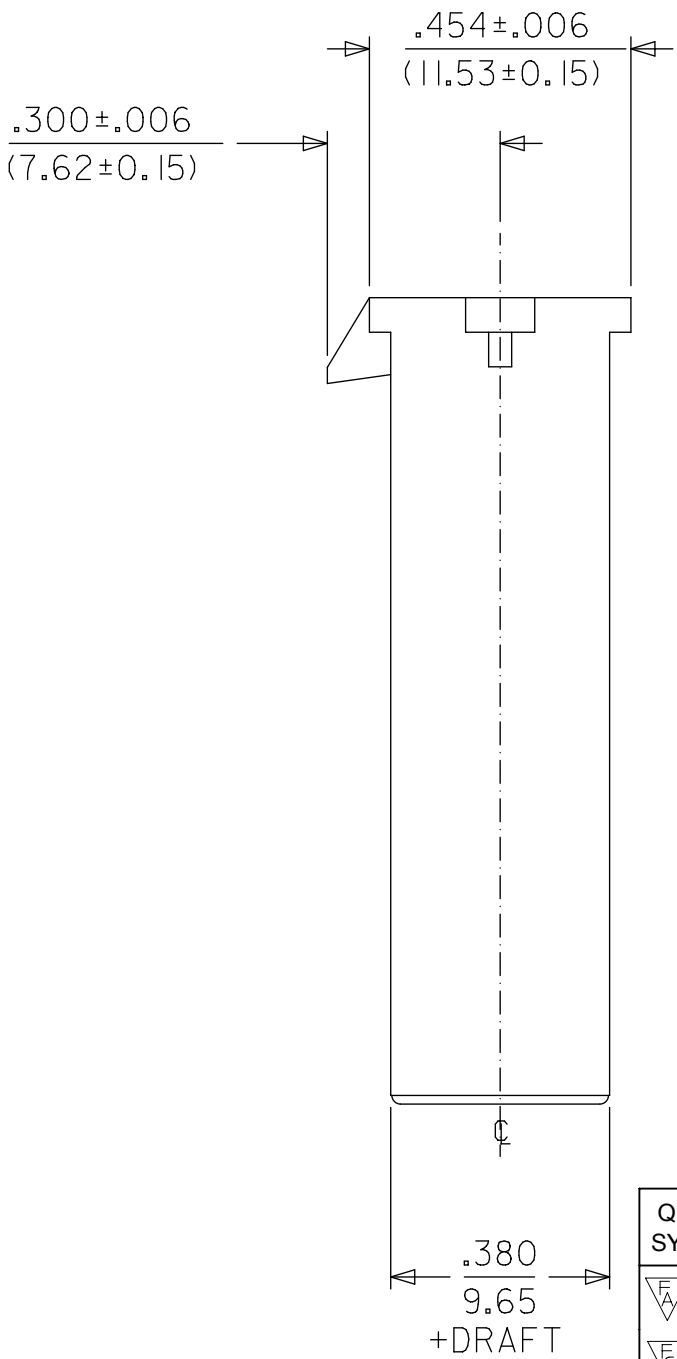
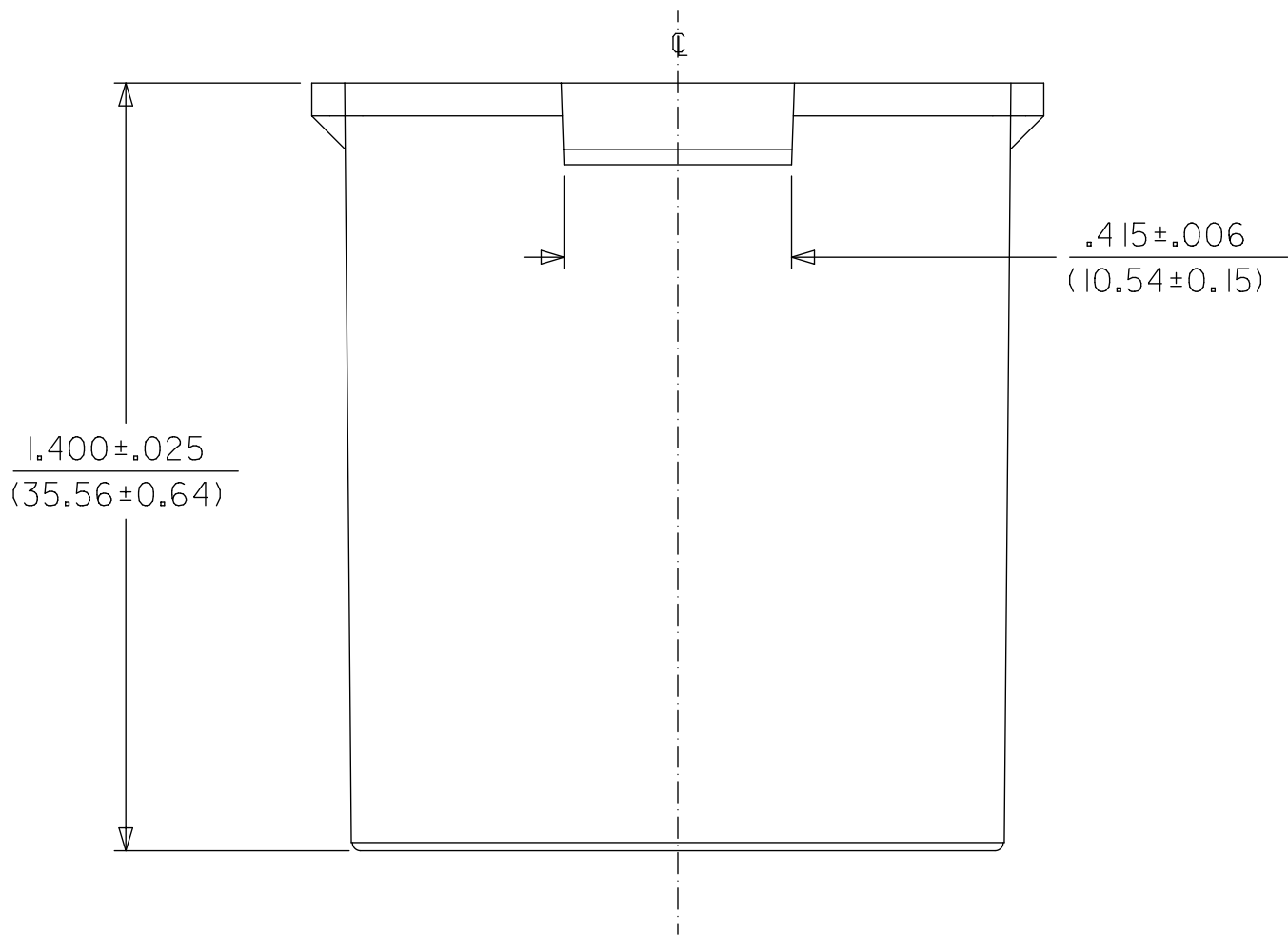
LOCKING NUB IS LOCATED HERE



172673-*004
(NO SCALE)

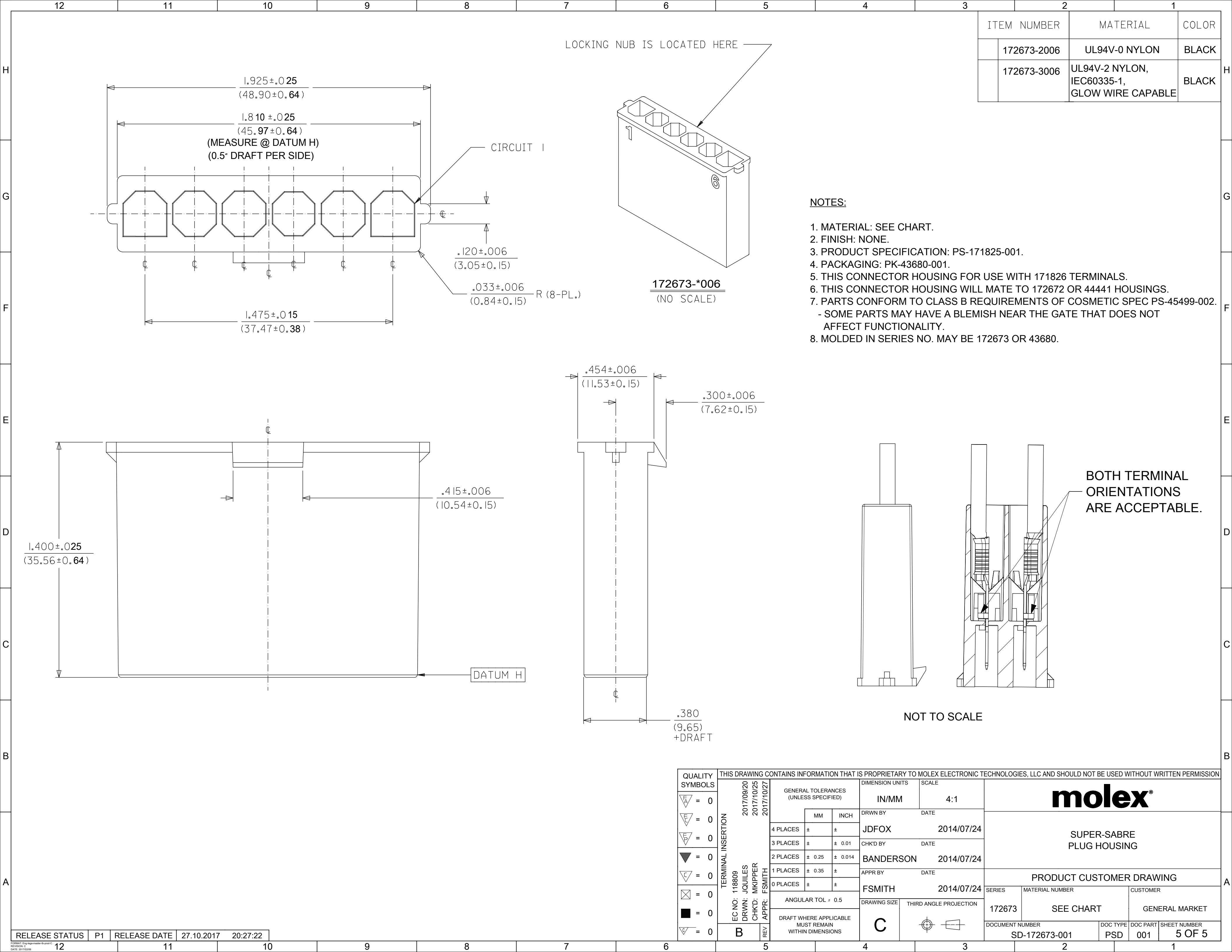
NOTES:

1. MATERIAL: SEE CHART.
2. FINISH: NONE.
3. PRODUCT SPECIFICATION: PS-171825-001.
4. PACKAGING: PK-43680-001.
5. THIS CONNECTOR HOUSING FOR USE WITH 171826 TERMINALS.
6. THIS CONNECTOR HOUSING WILL MATE TO 172672 OR 44441 HOUSINGS.
7. PARTS CONFORM TO CLASS B REQUIREMENTS OF COSMETIC SPEC PS-45499-002.
- SOME PARTS MAY HAVE A BLEMISH NEAR THE GATE THAT DOES NOT AFFECT FUNCTIONALITY.
8. MOLDED IN SERIES NO. MAY BE 172673 OR 43680.



NOT TO SCALE

QUALITY SYMBOLS		THIS DRAWING CONTAINS INFORMATION THAT IS PROPRIETARY TO MOLEX ELECTRONIC TECHNOLOGIES, LLC AND SHOULD NOT BE USED WITHOUT WRITTEN PERMISSION									
	= 0	TERMINAL INSERTION EC NO: 118809 DRWN: JQUILES CHKD: MKIPPER REV APPR: FSMITH	2017/09/20 2017/10/25 2017/10/27	GENERAL TOLERANCES (UNLESS SPECIFIED)		DIMENSION UNITS	SCALE	molex®			
	= 0					IN/MM	4:1				
	= 0					DRWN BY	DATE	SUPER-SABRE PLUG HOUSING			
	= 0			4 PLACES	±	JDFOX	2014/07/24				
	= 0			3 PLACES	±	CHK'D BY	DATE	PRODUCT CUSTOMER DRAWING			
	= 0			2 PLACES	± 0.25	BANDERSON	2014/07/24				
	= 0			1 PLACES	± 0.35	APPR BY	DATE	SERIES MATERIAL NUMBER CUSTOMER			
	= 0			0 PLACES	±	FSMITH	2014/07/24				
	= 0			ANGULAR TOL ± 0.5		DRAWING SIZE	THIRD ANGLE PROJECTION	172673 SEE CHART GENERAL MARKET			
	= 0			DRAFT WHERE APPLICABLE MUST REMAIN WITHIN DIMENSIONS		C					
	= 0	B	REV					DOCUMENT NUMBER SD-172673-001			
								DOC TYPE PSD	DOC PART 001	SHEET NUMBER 3 OF 5	



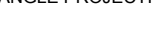
ITEM NUMBER		MATERIAL	COLOR
	172673-2006	UL94V-0 NYLON	BLACK
	172673-3006	UL94V-2 NYLON, IEC60335-1, GLOW WIRE CAPABLE	BLACK

NOTES:

1. MATERIAL: SEE CHART.
2. FINISH: NONE.
3. PRODUCT SPECIFICATION: PS-171825-001.
4. PACKAGING: PK-43680-001.
5. THIS CONNECTOR HOUSING FOR USE WITH 171826 TERMINALS.
6. THIS CONNECTOR HOUSING WILL MATE TO 172672 OR 44441 HOUSINGS.
7. PARTS CONFORM TO CLASS B REQUIREMENTS OF COSMETIC SPEC PS-45499-002.
- SOME PARTS MAY HAVE A BLEMISH NEAR THE GATE THAT DOES NOT AFFECT FUNCTIONALITY.
8. MOLDED IN SERIES NO. MAY BE 172673 OR 43680.

BOTH TERMINAL
ORIENTATIONS
ARE ACCEPTABLE.

NOT TO SCALE

QUALITY SYMBOLS		THIS DRAWING CONTAINS INFORMATION THAT IS PROPRIETARY TO MOLEX ELECTRONIC TECHNOLOGIES, LLC AND SHOULD NOT BE USED WITHOUT WRITTEN PERMISSION											
<div><div><div><div><div></div></div></div><div><div><div></div></div></div><div><div><div></div></div></div><div><div><div></div></div></div><div><div><div></div></div></div><div><div><div></div></div></div><div><div><div></div></div></div><div><div><div></div></div></div><div><div><div></div></div></div><div><div><div></div></div></div></div></div>	TERMINAL INSERTION	EC NO: 118809 DRWN: JQUILES CHKD: MKIPPER REV APPR: FSMITH	2017/09/20 2017/10/25 2017/10/27	GENERAL TOLERANCES (UNLESS SPECIFIED)		DIMENSION UNITS		SCALE		molex®			
						IN/MM		4:1					
						DRWN BY		DATE		SUPER-SABRE PLUG HOUSING			
						4 PLACES ±		JDFOX					
						3 PLACES ±		CHK'D BY		PRODUCT CUSTOMER DRAWING			
						2 PLACES ±		BANDERSON					
						1 PLACES ±		DATE					
						0 PLACES ±		APPR BY					
						FSMITH		DATE					
						ANGULAR TOL ± 0.5		2014/07/24					
						DRAFT WHERE APPLICABLE MUST REMAIN WITHIN DIMENSIONS		DRAWING SIZE		THIRD ANGLE PROJECTION			
						C							
RELEASE STATUS		P1	RELEASE DATE		27.10.2017	20:27:22							
12		11		10		9	8	7	6	5	4		
											3		
											2		
											1		