

产品编号 : 190030105

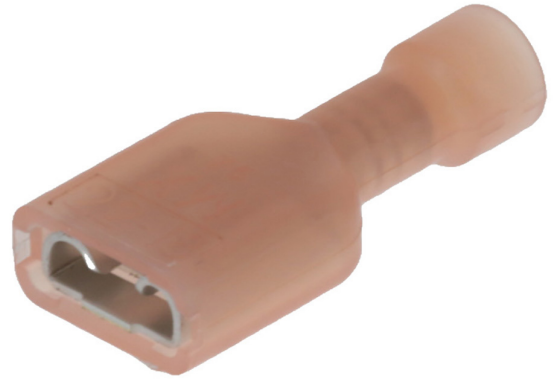
Product Description : InsulKrimp Quick Disconnect, Female, for 18-22 (0.80-0.35mm²), Continuous Molded Strip, Tab 6.35 x 0.81mm, Salmon

系列号 : 19003

状态 : Active

Product Category : Quick Disconnects

工程编号 : AA-2201C



文件和资源

图纸

图纸 190030105_sd.pdf

3D 模型和设计文件

3D模型 190030105_stp.zip


规格

产品规格 PS-19902-008-001.pdf

产品规格 PS-19902-011-001.pdf

产物环境合规

合规

GADSL/IMDS	Not Relevant
China RoHS	
EU ELV	Compliant per 2000/53/EC
Low-Halogen Status	Low-Halogen per IEC 61249-2-21
REACH SVHC	Not Contained per D(2023)3788-DC (14 Jun 2023)
EU RoHS	Compliant per EU 2015/863

多部分产品合规性声明

- Eu RoHS
- REACH SVHC
- Low-Halogen

多部分行业合规性文件

- IPC 1752A Class C
- IPC 1752A Class D
- Molex Product Compliance Declaration
- IEC-62474
- chemSHERPA (xml)

欧盟 RoHS 合格证书

产品详情

常规

状态	活动
类别	Quick Disconnects
系列	19003
说明	InsulKrimp Quick Disconnect, Female, for 18-22 (0.80-0.35mm ²), Continuous Molded Strip, Tab 6.35 x 0.81mm, Salmon
个评论	Funnel Entry
产品系列	Standard Quick-Disconnect Terminals
产品名称	InsulKrimp
类型	Quick Disconnect
UPC	800753128934

机构

CSA	LR18689
UL	E79133

电气

电压 - 最大	600V
---------	------

物理

筒型	已关闭
颜色-树脂	Salmon
阻燃性	94V-0
性别	女
符合灼热丝规范	否

绝缘	Fully
绝缘	Nylon (PA)
锁定插接部位	无
材料 - 金属	Brass
材料 - 接合部位电镀	Tin
材料 - 终端电镀	Tin
材料 - 树脂	Nylon
净重	0.916/g
方向	Straight
包装形式	Reel
最薄镀层 - 接合部位	4.064µm
最薄镀层 - 端接	4.064µm
有极性的插配件	否
调整片厚度	0.81mm
调整片宽	6.35mm
运行温度范围	-65° to +105° C
终端界面类型	Crimp or Compression
导线绝缘直径	3.43mm max.
线径规格 (AWG)	18, 20, 22

进程

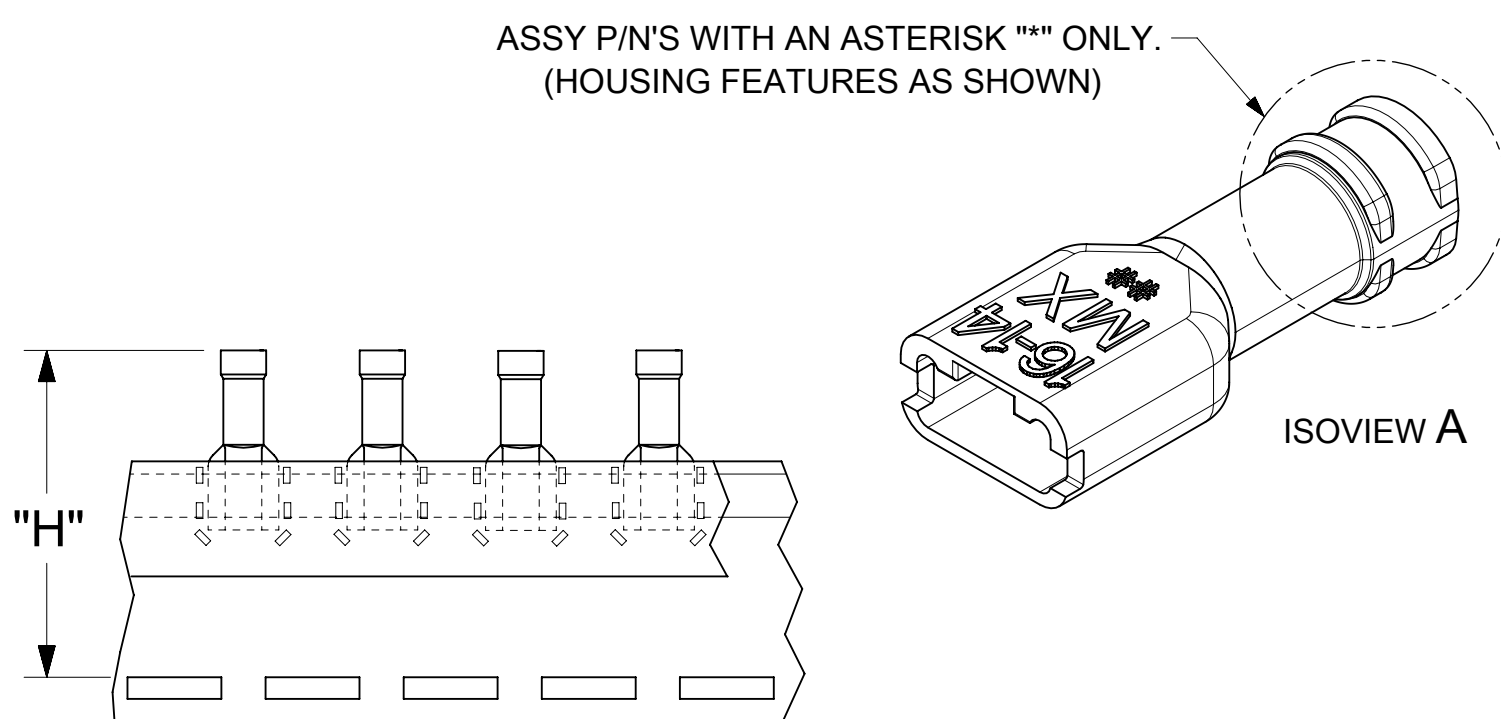
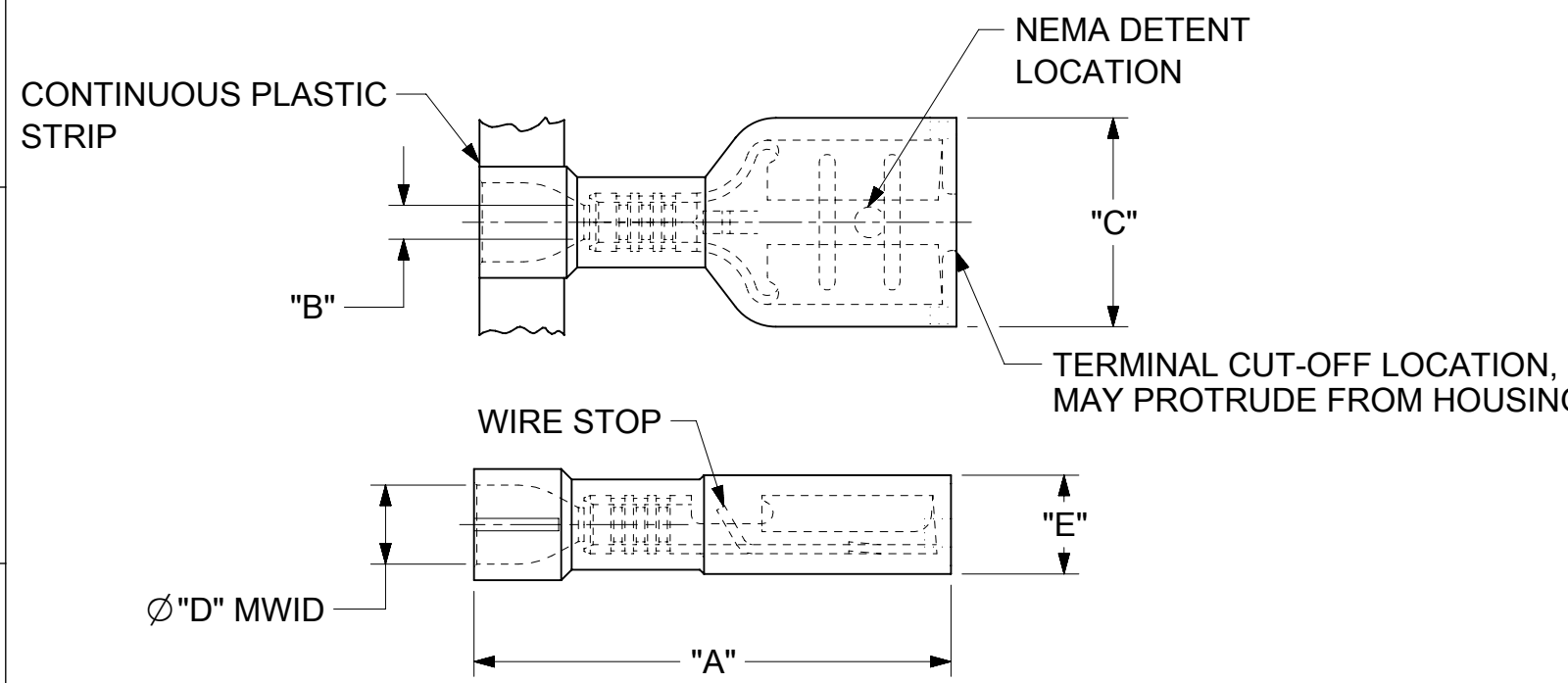
无铅	不适用
----	-----

施工工具

全局

描述	产品编号
ACP Perishable Tool Kit used in ACP Presses that Process Continuous Molded Product	<u>0190280104</u>
Mini-Mac Applicator	<u>0638837000</u>

10	9	8	7	6	5	4	3	2	1						
LOOSE PIECE MATERIAL NUMBER	LOOSE PIECE ENGRNG NUMBER	CONTINUOUS STRIP MATERIAL NUMBER	CONTINUOUS STRIP ENGRNG NUMBER	MYLAR TAPE MATERIAL NUMBER	MYLAR TAPE ENGRNG NUMBER	WIRE RANGE AWG	FITS MALE TAB SIZE	INSULATION COLOR	STOCK THICK	"A" MAX.	"B" MIN.	"C" MAX.	"D" MWID	"E" MAX.	"H" ±.02(0.5)
190030071	M-2212	190030106	M-2212C	190030073	M-2212T	26-24	.250x.032 (6.35x0.81)	YELLOW	.016/0.41	.86/21.8	.028/0.71	.38/9.7	.075/1.90	.18/4.6	1.42/35.9
190030064	M-2210	190030103	M-2210C	190030067	M-2210T	26-24	.187x.020 (4.75x0.51)	YELLOW	.016/0.41	.78/19.8	.028/0.71	.32/8.1	.075/1.90	.16/4.1	1.38/34.9
190030068	M-2211	190030104	M-2211C	190030070	M-2211T	26-24	.187x.032 (4.75x0.81)	DK YELLOW	.016/0.41	.78/19.8	.028/0.71	.32/8.1	.075/1.90	.16/4.1	1.38/34.9
190030001	AA-2201	190030105	AA-2201C	190030003	AA-2201T	22-18	.250x.032 (6.35x0.81)	SALMON	.016/0.41	.86/21.8	.056/1.42	.38/9.7	.135/3.43	.18/4.6	1.42/35.9
190030036	AA-2213	190030109	AA-2213C	190030074	AA-2213T	22-18	.205x.020 (5.21x0.51)	SALMON	.016/0.41	.78/19.8	.056/1.42	.32/8.1	.135/3.43	.16/4.1	1.38/34.9
190030038	AA-2214	190030110	AA-2214C	190030075	AA-2214T	22-18	.205x.032 (5.21x0.81)	PINK	.016/0.41	.78/19.8	.056/1.42	.32/8.1	.135/3.43	.16/4.1	1.38/34.9
190030011	AA-2202	190030107	AA-2202C	190030013	AA-2202T	22-18	.187x.020 (4.75x0.51)	SALMON	.016/0.41	.78/19.8	.056/1.42	.32/8.1	.135/3.43	.16/4.1	1.38/34.9
190030017	AA-2203	190030108	AA-2203C	190030020	AA-2203T	22-18	.187x.032 (4.75x0.81)	PINK	.016/0.41	.78/19.8	.056/1.42	.32/8.1	.135/3.43	.16/4.1	1.38/34.9
190030024	AA-2204	190030097	AA-2204C	190030026	AA-2204T	22-18	.110x.020 (2.79x0.51)	SALMON	.012/0.30	.78/19.8	.056/1.42	.23/5.9	.135/3.43	.15/3.8	1.39/35.3
190030030	AA-2205	190030098	AA-2205C	190030032	AA-2205T	22-18	.110x.032 (2.79x0.81)	PINK	.012/0.30	.78/19.8	.056/1.42	.23/5.9	.135/3.43	.15/3.8	1.39/35.3
190030040*	BB-2206	190030041*	BB-2206C	190030042*	BB-2206T	16-14	.250x.032 (6.35x0.81)	BLUE	.016/0.41	.86/21.8	.079/2.00	.38/9.7	.160/4.06	.18/4.6	1.42/35.9
190030062*	BB-2215	190030085*	BB-2215C	190030077*	BB-2215T	16-14	.205x.020 (5.21x0.51)	BLUE	.016/0.41	.78/19.8	.079/2.00	.32/8.1	.160/4.06	.17/4.3	1.41/35.7
190030063*	BB-2216	190030086*	BB-2216C	190030078*	BB-2216T	16-14	.205x.032 (5.21x0.81)	AQUA	.016/0.41	.78/19.8	.079/2.00	.32/8.1	.160/4.06	.17/4.3	1.41/35.7
190030050*	BB-2207	190030051*	BB-2207C	190030052*	BB-2207T	16-14	.187x.020 (4.75x0.51)	BLUE	.016/0.41	.78/19.8	.079/2.00	.32/8.1	.160/4.06	.17/4.3	1.41/35.7
190030056*	BB-2208	190030057*	BB-2208C	190030058*	BB-2208T	16-14	.187x.032 (4.75x0.81)	AQUA	.016/0.41	.78/19.8	.079/2.00	.32/8.1	.160/4.06	.17/4.3	1.41/35.7
196060002	C-2293	196060001	C-2293C	196060003	C-2293T	12-10	.250x.032 (6.35x0.81)	YELLOW	.018/0.46	1.03/26.1	.117/2.97	.38/9.7	.235/5.97	.22/5.6	1.53/38.9



- NOTE(S):
- MATERIAL:
 TERMINAL: BRASS
 PLATING: ELETRO-TIN
 FERRULE: BRASS
 PLATING: ELETRO-TIN
 INSULATION: NYLON 6/6 94V-2
 COLOR: SEE CHART
 - MWID = MAXIMUM WIRE INSULATION DIAMETER
 - PARTS ARE RoHS COMPLIANT.

FUNCTIONAL SYMBOLS										THIS DRAWING CONTAINS INFORMATION THAT IS PROPRIETARY TO MOLEX ELECTRONIC TECHNOLOGIES, LLC AND SHOULD NOT BE USED WITHOUT WRITTEN PERMISSION									
DIMENSION UNITS					SCALE					CURRENT REV DESC: ADD "*" TO P/N'S: 190030040, -0041, -0042									
HYBRID					NTS														
GENERAL TOLERANCES (UNLESS SPECIFIED)										EC NO: 669489									
										DRWN: DMYRICK					2021/07/06				
										CHK'D: JMACNEIL					2021/07/07				
										APPR: JMACNEIL					2021/07/07				
DIVISIONAL SYMBOLS										INITIAL REVISION:					DOCUMENT NUMBER				
										DRWN: BENDERLE					2002/04/02				
										APPR: RDEROSS					2002/04/03				
ANGULAR TOL ± °										THIRD ANGLE PROJECTION					DRAWING				
DRAFT WHERE APPLICABLE MUST REMAIN WITHIN DIMENSIONS										B-SIZE					SERIES				
										19003					MATERIAL NUMBER				
										SEE CHART					CUSTOMER				
										GENERAL MARKET					SHEET NUMBER				
										1 OF 1									

DOCUMENT STATUS	P1	RELEASE DATE	2021/07/07	20:47:37
-----------------	----	--------------	------------	----------