



产品编号 : 26034131

系列号 : 6442

Product Category : Connector Housings

Product Description : KK 3.96mm Crimp Terminal Housing, Use With Trifurcon Terminals, Friction Ramp, 13 Circuits, Natural

状态 : Active

工程编号 : 6442-R13-Z

---

## 文件和资源

### 图纸

图纸 026034131\_sd.pdf

### 3D 模型和设计文件

3D模型 026034131\_stp.zip


### 规格

产品规格 PS-40-02-001.pdf

---

## 产物环境合规

### 合规

GADSL/IMDS	Not Relevant
China RoHS	
EU ELV	Not Relevant
Low-Halogen Status	Low-Halogen per IEC 61249-2-21
REACH SVHC	Not Contained per D(2023)8585-DC (23 Jan 2024)
EU RoHS	Compliant per EU 2015/863

### 多部分产品合规性声明

- Eu RoHS
- REACH SVHC
- Low-Halogen
  
- IPC 1752A Class C
- IPC 1752A Class D
- Molex Product Compliance Declaration
- IEC-62474
- chemSHERPA (xml)

## 产品详情

### 常规

状态	活动
类别	Connector Housings
系列	6442
说明	KK 3.96mm Crimp Terminal Housing, Use With Trifurcon Terminals, Friction Ramp, 13 Circuits, Natural
应用	Power, Wire-to-Board
个评论	Replacement is V-0 instead of V-2
产品系列	KK Interconnect Systems
产品名称	KK 396
UPC	800753587083

### 机构

CSA	LR19980
-----	---------

### 物理

电路数（最多）	13
颜色-树脂	Natural
阻燃性	94V-2
性别	Receptacle
符合灼热丝规范	否
锁定插接部位	是
材料 - 树脂	Nylon
净重	3.452/g
行数	1
包装形式	Bag
面板安装式	否
间距 - 插配接口	3.96mm
可堆叠的	否
运行温度范围	See Product Specification

## 进程

无铅	不适用
----	-----

---

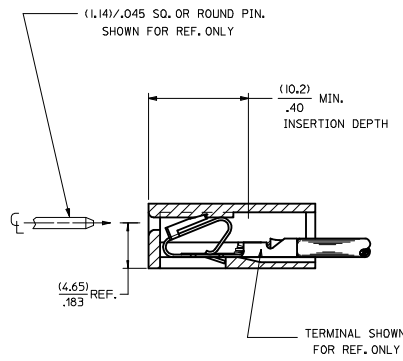
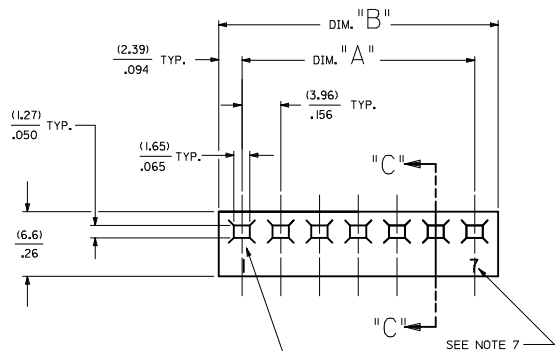
## 可配插/可连接使用的产品

### 可配插部件

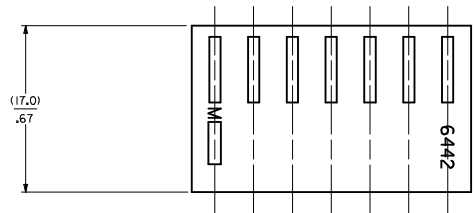
描述	产品编号
配插使用	Molex 3.96mm pitch KK headers

### 可连接使用部件

描述	产品编号
Pre-Crimped Lead KK Plus 396 Female-to-KK Plus 396 Female, Tin (Sn) Plating, 150.00mm Length, 18 AWG, Black	<a href="/content/molex/molex-dot-com/cn/zh/products/product-page.html/797582145.html">/content/molex/molex-dot-com/cn/zh/products/product-page.html/797582145.html</a>
Pre-Crimped Lead KK Plus 396 Female-to-KK Plus 396 Female, Tin (Sn) Plating, 300.00mm Length, 18 AWG, Black	<a href="/content/molex/molex-dot-com/cn/zh/products/product-page.html/797582146.html">/content/molex/molex-dot-com/cn/zh/products/product-page.html/797582146.html</a>
Female Crimp Terminals for 3.96mm Pitch Housings	<u>45570</u>
KK Trifurcon Female Crimp Terminals	<u>6838</u>
KK Trifurcon Female Crimp Terminals	<u>7258</u>



SECTION "C-C"



NO. OF CKT'S.	DIM. A	DIM. B
1		(4.78±.18)
2	(3.96±.13)	(8.74±.18)
3	.156±.005	.344±.007
4	(7.92±.13)	(12.70±.18)
5	.312±.005	.500±.007
6	(11.89±.13)	(16.66±.18)
7	.468±.005	.656±.007
8	(15.85±.13)	(20.62±.18)
9	.624±.005	.812±.007
10	(19.81±.13)	(24.59±.18)
11	.780±.005	.968±.007
12	(23.77±.13)	(28.55±.18)
13	.936±.005	1.124±.007
14	(27.74±.25)	(32.51±.30)
15	1.092±.010	1.280±.012
16	(31.70±.25)	(36.47±.30)
17	1.248±.010	1.436±.012
18	(35.66±.25)	(40.44±.30)
19	1.404±.010	1.592±.012
20	(39.62±.25)	(44.40±.30)
21	1.560±.010	1.748±.012
22	(43.59±.25)	(48.36±.30)
23	1.716±.010	1.904±.012
24	(47.55±.30)	(52.32±.36)
	1.872±.012	2.060±.014
	(51.51±.36)	(56.29±.41)
	2.028±.014	2.216±.016
	(55.47±.36)	(60.25±.41)
	2.184±.014	2.372±.016
	(59.44±.36)	(64.21±.41)
	2.340±.014	2.528±.016
	(63.40±.36)	(68.17±.41)
	2.496±.014	2.684±.016
	(67.36±.36)	(72.14±.41)
	2.652±.014	2.840±.016
	(71.32±.36)	(76.10±.41)
	2.808±.014	2.996±.016
	(75.29±.46)	(80.06±.51)
	2.964±.018	3.152±.020
	(79.25±.46)	(84.02±.51)
	3.120±.018	3.308±.020
	(83.21±.46)	(87.99±.51)
	3.276±.018	3.464±.020
	(87.17±.46)	(91.95±.51)
	3.432±.018	3.620±.020
	(91.14±.46)	(95.91±.51)
	3.588±.018	3.776±.020

- NOTES:
1. MATERIAL A: NYLON 6/6 UL94V-2, COLOR: NATURAL
  2. FINISH: N/A
  3. THIS PART COMPLIES WITH PRODUCT SPECIFICATION PS-40-02.
  4. PACKAGING SPECIFICATION: PK-6442-001
  5. HOUSING SHOWN ABOVE IS STANDARD HOUSING WITH NO OPTIONS.
  6. THIS HOUSING FOR USE WITH TERMINAL NO., 45570-x, (18-20 GA.) WITH (3.12)/.123 MAX. INSULATION DIA. 6838-x, (18-24 GA.) WITH (2.79)/.110 MAX. INSULATION DIA. 7258-x, (22-26 GA.) WITH (1.65)/.065 MAX. INSULATION DIA.
  7. LAST CIRCUIT I.D. NOT PRESENT ON 2-3 CIRCUIT HOUSINGS AND MAY OR MAY NOT BE PRESENT ON 4 CIRCUIT HOUSINGS AND LARGER.
  8. THIS PART CONFORMS TO CLASS B REQUIREMENTS OF COSMETIC SPECIFICATION PS-45499-002.
  9. SEE SHEET 2 FOR OPTIONS.
  10. TEXT ON PART IS FOR REFERENCE ONLY. TEXT AND TEXT LOCATION MAY VARY DEPENDING ON PART NUMBER AND/OR TOOL.

HOUSING OPTIONS

CODE	HOOKS	SIDE HOOKS	RAMP
BLANK	NONE	NONE	NONE
A	NONE	YES	NONE
R	NONE	NONE	FRICITION
B	NONE	NONE	TYPE B
C	NONE	NONE	TYPE C

6442-\*N-\*-\*-\*

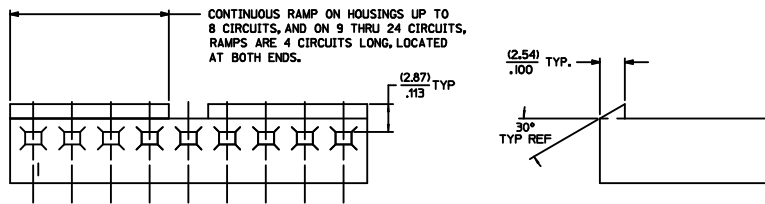
VOLTAGE RATING OPTION  
BLANK=NONE  
V= '250 VAC' ON HOUSING

MAT'L OPTION  
BLANK= MATERIAL A (SEE NOTE 1)

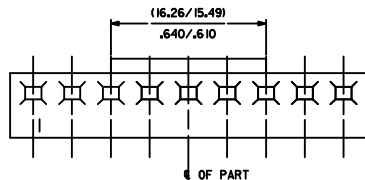
MOLDED VOID CODE  
Z=NO VOIDS  
A=CKT. 1 VOID,  
B=CKT. 2 VOID, ETC.  
5=1ST MULTIPLE VOID,  
52=2ND MULTIPLE VOID, ETC.

NO. OF CKT'S.

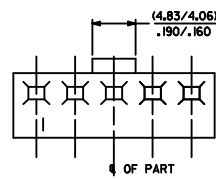
QUALITY SYMBOLS	GENERAL TOLERANCES (UNLESS SPECIFIED)	DIMENSION STYLE	SCALE	DESIGN UNITS	THIRD ANGLE PROJECTION
▽=0	mm INCH	MM/IN	---	INCH	☉
▽=0	4 PLACES ±.010	DRAWN BY POLGAR	DATE 1986/12/03	TITLE KK (3.96)/.156 TRIFURCON CRIMP TERMINAL HOUSING 6442 SERIES	
▽=0	3 PLACES ±.014	CHECKED BY PATEL	DATE 1986/12/03	molex	
▽=0	2 PLACES ±0.25	APPROVED BY LENZ	DATE 1986/12/03	MATERIAL NO. SEE CHART	DOCUMENT NO. SD-6442
▽=0	1 PLACE ±0.36				SHEET NO. 1 OF 4
▽=0	0 PLACE ±				THIS DRAWING CONTAINS INFORMATION THAT IS PROPRIETARY TO MOLEX INCORPORATED AND SHOULD NOT BE USED WITHOUT WRITTEN PERMISSION



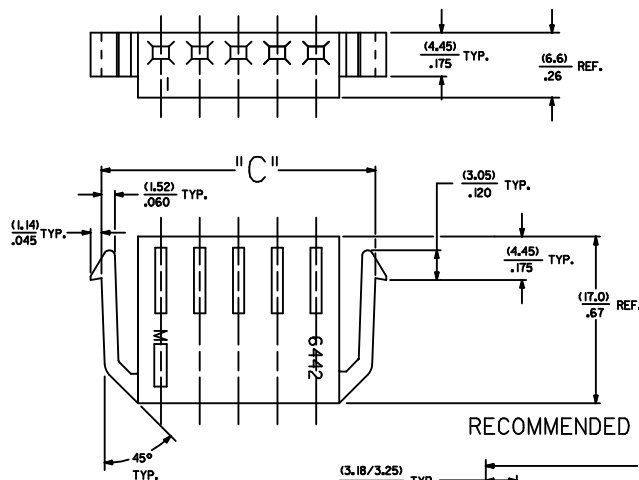
STD. RAMP OPTION CODE "R"



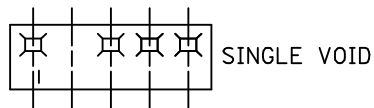
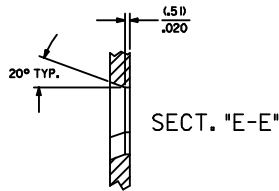
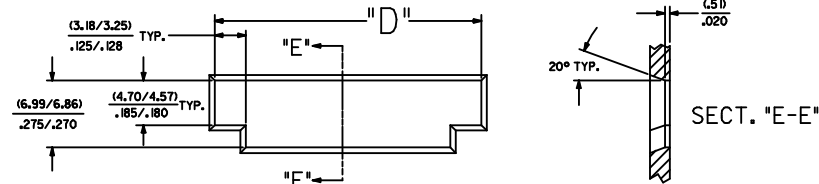
SELECTIVE RAMP OPTION CODE "C"



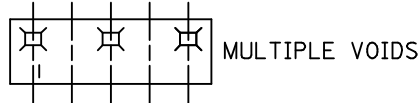
SELECTIVE RAMP OPTION CODE "B"



SIDE HOOKS OPTION CODE "A"

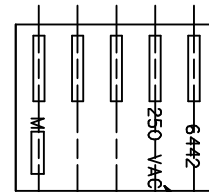


SINGLE VOID



MULTIPLE VOIDS

MOLDED VOIDS  
SEE LEGEND ON SHT. 1  
SEE CHART FOR VOID CKT. LOCATIONS



SEE LEGEND ON SHT. 1

OPT. VOLTAGE RATING

NO. OF CKT'S.	DIM. "C"	DIM. "D"
2	(16.48/15.60) .643/.614	(15.47/15.34) .609/.604
3	(20.45/19.56) .805/.770	(19.43/18.30) .765/.760
5	(28.37/27.48) 1.117/1.082	(27.36/27.23) L077/1.072

QUALITY SYMBOLS	GENERAL TOLERANCES (UNLESS SPECIFIED)		DIMENSION STYLE		SCALE	DESIGN UNITS	THIRD ANGLE PROJECTION
	mm	INCH	MM/IN	DATE			
▽=0	4 PLACES ±	---	POLGAR	1986/12/05	---	INCH	
▽=0	3 PLACES ±	±.010	CHECKED BY	DATE			
▽=0	2 PLACES ±	±.025 ±.014	PATEL	1986/12/05			
▽=0	1 PLACE ±	±.036 ±---	APPROVED BY	DATE			
▽=0	0 PLACE ±	±	LENZ	1986/12/05	MATERIAL NO.		DOCUMENT NO.
ANGULAR ±1/2°			SEE CHART		SD-6442		
DRAFT WHERE APPLICABLE MUST REMAIN WITHIN DIMENSIONS			SIZE D		THIS DRAWING CONTAINS INFORMATION THAT IS PROPRIETARY TO MOLEX INCORPORATED AND SHOULD NOT BE USED WITHOUT WRITTEN PERMISSION		SHEET NO.
							2 OF 4

NOTE 10 ADDED  
EC NO: UCF2018-0013  
DATE: 2017/07/28  
DRAWN BY: JTB  
CHECKED BY: SHWARG  
APPR: SHWARG  
REV: DESCRIPTION

KK (3.96)/156 TRIFURCON CRIMP TERMINAL HOUSING 6442 SERIES

molex

SD-6442

	20	19	18	17	16	15	14	13	12	11	10	9	8	7	6	5	4	3	2	1	
	<b>6442-N**</b>			<b>6442-RN**</b>			<b>6442-RN**</b>			<b>6442-RND**</b>			<b>6442-BN**</b>			<b>6442-CN**</b>					
	PART NO.	ENG. NO.	VOIDS	PART NO.	ENG. NO.	VOIDS	PART NO.	ENG. NO.	VOIDS	PART NO.	ENG. NO.	VOIDS	PART NO.	ENG. NO.	VOIDS	PART NO.	ENG. NO.	VOIDS	PART NO.	ENG. NO.	VOIDS
	26-03-3011	6442-1-Z		26-03-4011	6442-R1-Z					26-03-7021	6442-R1D-Z										
	26-03-3021	6442-2-Z		26-03-4020	6442-R2-Z					26-03-7031	6442-R2D-Z										
	26-03-3031	6442-3-Z		26-03-4030	6442-R3-Z					26-03-7041	6442-R3D-Z										
	26-03-3041	6442-4-Z		26-03-4041	6442-R4-Z						6442-R4D-Z										
	26-03-3051	6442-5-Z		26-03-4050	6442-R5-Z						6442-R5D-Z										
	26-03-3061	6442-6-Z		26-03-4061	6442-R6-Z						6442-R6D-Z										
	26-03-3071	6442-7-Z		26-03-4070	6442-R7-Z					26-03-7071	6442-R7D-Z										
	26-03-3081	6442-8-Z		26-03-4081	6442-R8-Z						6442-R8D-Z										
	26-03-3091	6442-9-Z		26-03-4090	6442-R9-Z					26-03-7091	6442-R9D-Z										
	26-03-3101	6442-10-Z		26-03-4101	6442-R10-Z						6442-R10D-Z										
	26-03-3111	6442-11-Z		26-03-4111	6442-R11-Z						6442-R11D-Z										
	26-03-3121	6442-12-Z		26-03-4121	6442-R12-Z					26-03-7121	6442-R12D-Z										
	26-03-3131	6442-13-Z		26-03-4131	6442-R13-Z						6442-R13D-Z										
	26-03-3141	6442-14-Z		26-03-4141	6442-R14-Z						6442-R14D-Z										
	26-03-3151	6442-15-Z		26-03-4151	6442-R15-Z						6442-R15D-Z										
	26-03-3161	6442-16-Z		26-03-4161	6442-R16-Z						6442-R16D-Z										
	26-03-3171	6442-17-Z		26-03-4171	6442-R17-Z					26-03-7171	6442-R17D-Z										
	26-03-3181	6442-18-Z		26-03-4181	6442-R18-Z						6442-R18D-Z										
	26-03-3191	6442-19-Z		26-03-4191	6442-R19-Z						6442-R19D-Z										
	26-03-3201	6442-20-Z		26-03-4201	6442-R20-Z						6442-R20D-Z										
	26-03-3211	6442-21-Z		26-03-4211	6442-R21-Z						6442-R21D-Z										
	26-03-3221	6442-22-Z		26-03-4221	6442-R22-Z						6442-R22D-Z										
	26-03-3231	6442-23-Z		26-03-4231	6442-R23-Z						6442-R23D-Z										
	26-03-3241	6442-24-Z		26-03-4241	6442-R24-Z						6442-R24D-Z										
		6442-15-B	2	26-03-4043	6442-R4-C	3				26-03-7042	6442-R4D-B	2									
		6442-9-B	2	26-03-4055	6442-R5-E	5				26-03-7072	6442-R7D-C	3									
		6442-12-F	6	26-03-4065	6442-R6-E	5				26-03-7092	6442-R9D-B	2									
		6442-7-51	1,7	26-03-4086	6442-R8-F	6				26-03-7093	6442-R9D-E	5									
		6442-9-51	1,9	26-03-4097	6442-R9-G	7				26-03-7122	6442-R12D-E	5									
		6442-9-52	2,9	26-03-4108	6442-R10-H	8				26-03-7172	6442-R17D-E	5									
		6442-8-B	2	26-03-4120	6442-R12-J	10															
		6442-8-F	6	26-03-4157	6442-R15-G	7															
		6442-10-D	4	26-03-4073	6442-R7-C	3															
		6442-5-B	2	26-03-4094	6442-R9-D	4															
		6442-10-B	2	26-03-4096	6442-R9-F	6															
		6442-5-C	3	26-03-4092	6442-R9-B	2															
		6442-13-B	2	26-03-4064	6442-R6-D	4															
		6442-11-E	5	26-03-4075	6442-R7-E	5															
				26-03-4095	6442-R9-E	5															
				26-03-4085	6442-R8-E	5															
				26-03-4072	6442-R7-B	2															
				26-03-4063	6442-R6-C	3															
				26-03-4062	6442-R6-B	2															
				26-03-4125	6442-R12-E	5															
				26-03-4123	6442-R12-C	3															
				26-03-4076	6442-R7-F	6															
				26-03-4129	6442-R12-1	9															
				26-03-4143	6442-R14-C	3															
				26-03-4093	6442-R9-C	3															
				26-03-4054	6442-R5-D	4															
				26-03-4052	6442-R5-B	2															
				26-03-4103	6442-R10-C	3															
				26-03-4042	6442-R4-B	2															
				26-03-4106	6442-R10-F	6															
					6442-R12-F	6															
					6442-R11-B	2															
					6442-R13-B	2															
					6442-R17-E	5															
					6442-R10-B	2															
					6442-R3-B	2															
					6442-R8-B	2															
					6442-R7-51	1,7															
					6442-R9-51	1,9															
					6442-R9-52	2,9															
					6442-R14-M	13															
					6442-R4-A	1															
					6442-R15-N	14															
					6442-R10-51	1,10															
					6442-R-08-C	3															

<b>UPDATE TITLE</b> EC NO. UCF2009-3148 DRWNK/PPER CHKD/SSOUSEK APPR/FSM TH 2009/07/13 2009/07/13 2009/08/05	<b>QUALITY SYMBOLS</b> ▽=0 ▽=0	<b>GENERAL TOLERANCES (UNLESS SPECIFIED)</b> <table border="1"> <tr> <th></th> <th>mm</th> <th>INCH</th> </tr> <tr> <td>4 PLACES</td> <td>± ---</td> <td>± ---</td> </tr> <tr> <td>3 PLACES</td> <td>± ---</td> <td>± ---</td> </tr> <tr> <td>2 PLACES</td> <td>± ---</td> <td>± ---</td> </tr> <tr> <td>1 PLACE</td> <td>± ---</td> <td>± ---</td> </tr> </table>		mm	INCH	4 PLACES	± ---	± ---	3 PLACES	± ---	± ---	2 PLACES	± ---	± ---	1 PLACE	± ---	± ---	<b>DIMENSION STYLE</b> MM/IN	<b>SCALE</b> ---	<b>DESIGN UNITS</b> INCH	<b>THIRD ANGLE PROJECTION</b> 
		mm	INCH																		
	4 PLACES	± ---	± ---																		
	3 PLACES	± ---	± ---																		
2 PLACES	± ---	± ---																			
1 PLACE	± ---	± ---																			
<b>DRAFT WHERE APPLICABLE MUST REMAIN WITHIN DIMENSIONS</b>	<b>DRAWN BY</b> POLGAR <b>CHECKED BY</b> PATEL <b>APPROVED BY</b> LENZ	<b>DATE</b> 1986/12/02 1986/12/02 1986/12/02	<b>TITLE</b> KK (3.96)/156 TRIFURCON CRIMP TERMINAL HOUSING 6442 SERIES	<b>MATERIAL NO.</b> SEE CHART	<b>DOCUMENT NO.</b> SD-6442	<b>SHEET NO.</b> 3 OF 4															
<b>THIS DRAWING CONTAINS INFORMATION THAT IS PROPRIETARY TO MOLEX INCORPORATED AND SHOULD NOT BE USED WITHOUT WRITTEN PERMISSION</b>																					