



产品编号 : [330001003](#)

Product Description : MX150 Male Terminal for Mat-Sealed or Unsealed Connectors, Tin Plating, 22 AWG, Left Reel Payoff

系列号 : 33000

状态 : Active

Product Category : Crimp Terminals



---

## 文件和资源

### 图纸

[图纸 330001003\\_sd.pdf](#)

[包装设计图 313025040-000.pdf](#)

### 规格


[应用规格 AS-33000-001-001.pdf](#)

[测试摘要 TS-33000-001-001.pdf](#)

---

## 产物环境合规

### 合规

GADSL/IMDS	Compliant with Exemption 44; 34; 33
China RoHS	
EU ELV	Compliant per 2000/53/EC
Low-Halogen Status	Low-Halogen per IEC 61249-2-21
REACH SVHC	Not Contained per D(2023)3788-DC (14 Jun 2023)
EU RoHS	Compliant per EU 2015/863

### 多部分产品合规性声明

- Eu RoHS
- REACH SVHC
- Low-Halogen

### 多部分行业合规性文件

- IPC 1752A Class C
- IPC 1752A Class D
- Molex Product Compliance Declaration

- IEC-62474

- chemSHERPA (xml)

欧盟 RoHS 合格证书

## 产品详情

### 常规

状态	活动
类别	Crimp Terminals
系列	33000
说明	MX150 Male Terminal for Mat-Sealed or Unsealed Connectors, Tin Plating, 22 AWG, Left Reel Payoff
应用	Power, Wire-to-Board, Wire-to-Wire
个评论	Left Reel Payoff
产品系列	MX150 Sealed and Unsealed Connector System
产品名称	MX150
UPC	756054586242

### 电气

每触点最大电流	Contact Molex
电压 - 最大	14V DC

### 物理

耐用性(插拔次数) - 最多次数	25
性别	男
夹具代码	22
材料 - 金属	High Performance Alloy (HPA)
材料 - 接合部位电镀	Tin
材料 - 终端电镀	Tin
净重	0.415/g
包装形式	Reel
最薄镀层 - 接合部位	0.508µm
最薄镀层 - 端接	0.508µm
终端界面类型	Crimp or Compression

导线绝缘直径	1.65mm max.
线径规格 (AWG)	22
线缆尺寸mm <sup>2</sup>	0.50

## 进程

无铅	不适用
----	-----

---

## 可连接使用部件

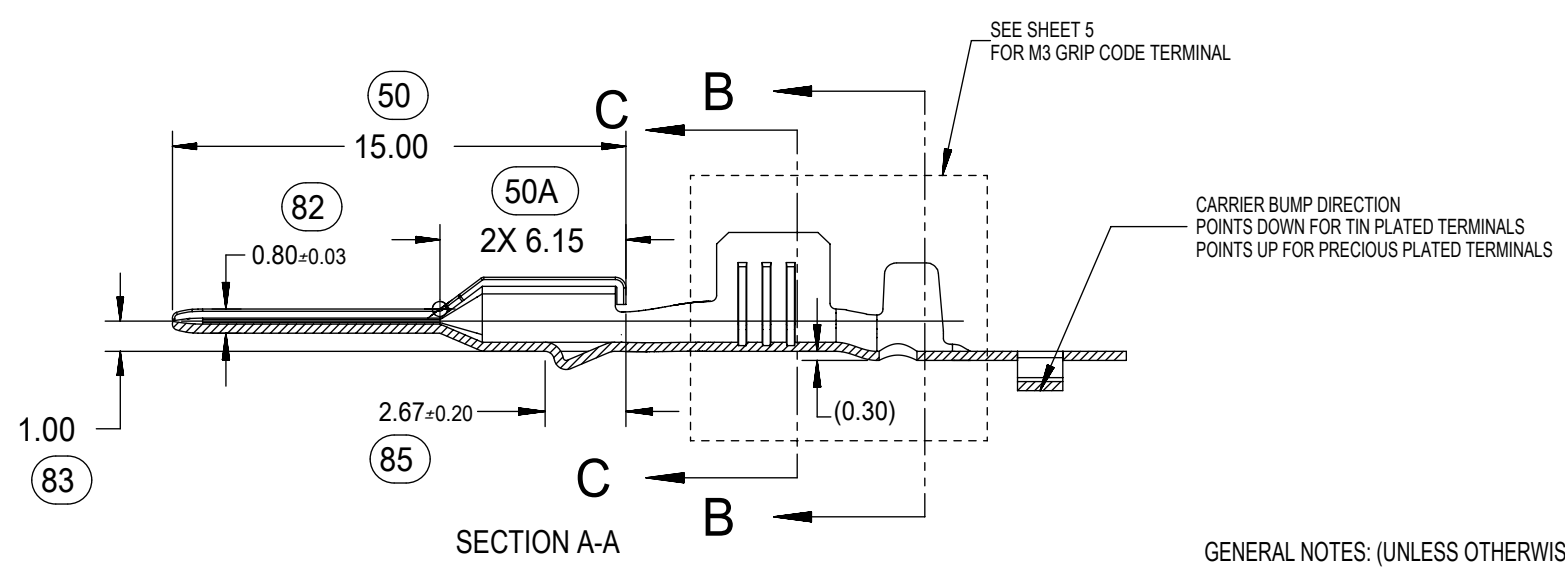
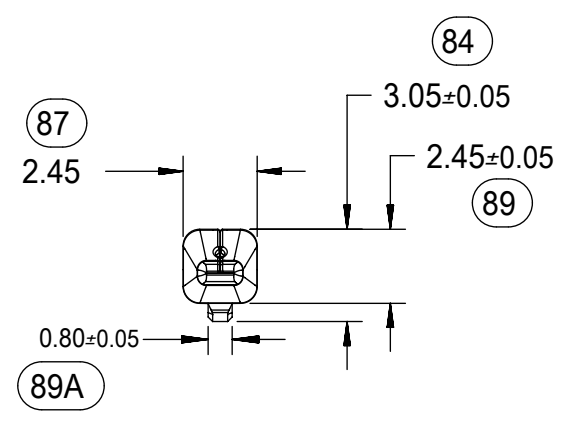
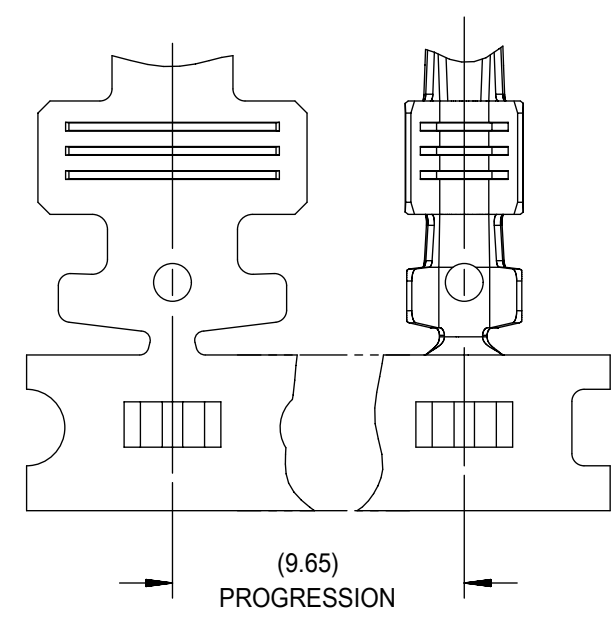
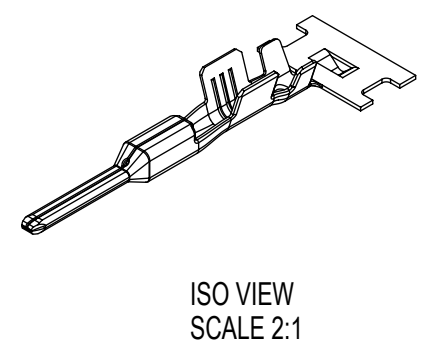
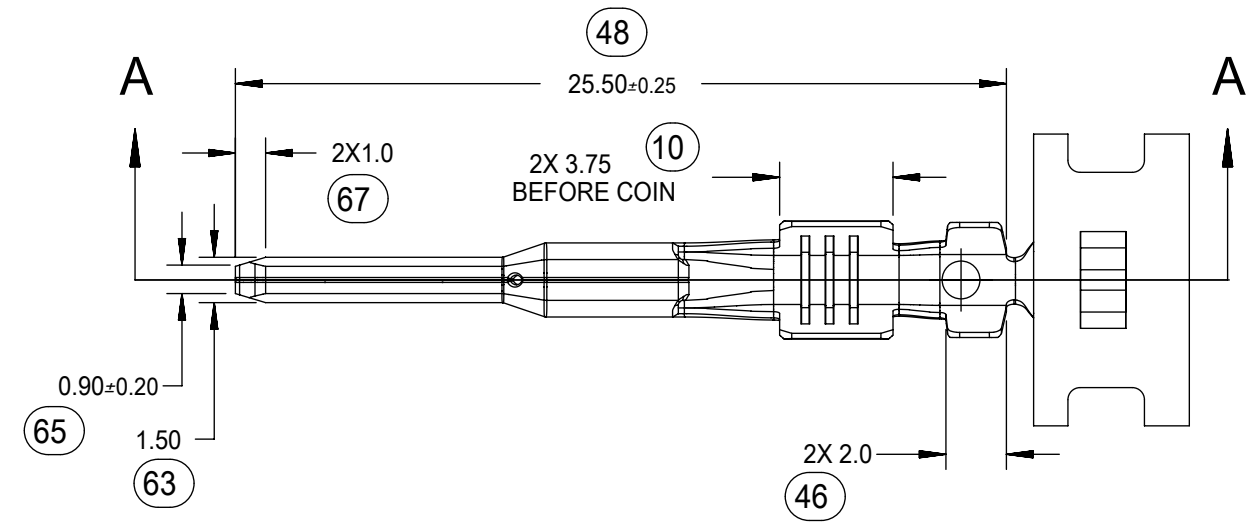
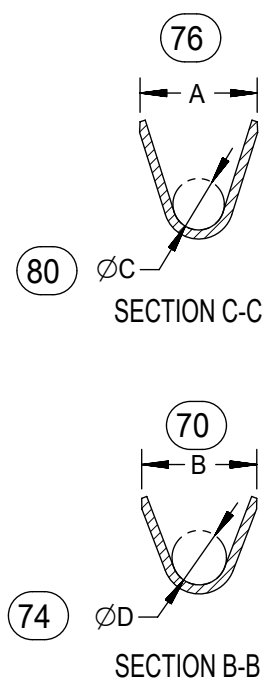
描述	产品编号
MX150 Mat-Sealed Single Row Male Connector Assemblies	<u>33481</u>
MX150 Mat-Sealed Dual Row Male Connector Assemblies	<u>33482</u>

---

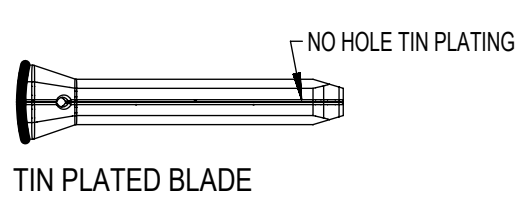
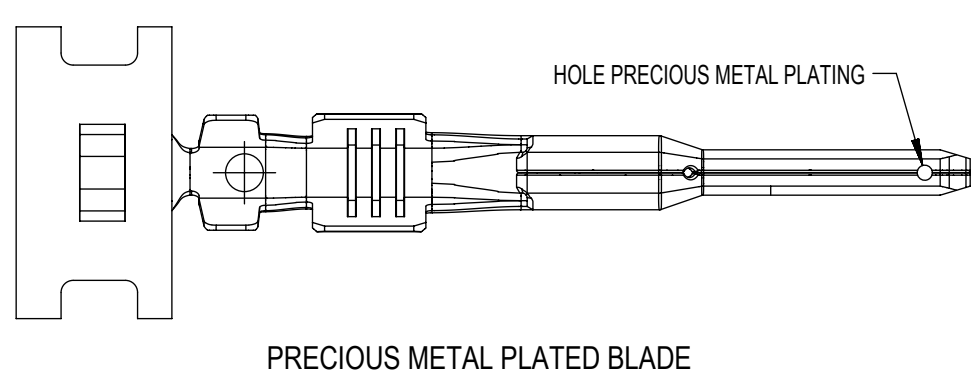
## 施工工具

### 全局

描述	产品编号
Extraction Toolkit for MX150 Connectors	<u>2002220700</u>
PremiumGrade Hand Crimp Tool for 1.50mm MX150 Blade Male Terminals, 18-22 AWG	<u>0638112600</u>
Extraction Tool for MX150L, MX150, PT Bulb Socket, iGrid, SPOX, and Wire-to-Motor Terminals	<u>0638131500</u>
FineAdjust Applicator for MX150 Male Terminals, 22 AWG and 0.50mm <sup>2</sup> wire	<u>0639000600</u>
FineAdjust Applicator for SRC Connector using MX150 (M3) Blade Terminals, 0.50mm <sup>2</sup> CHEMINAX 2021D0309 wire	<u>0639042100</u>



- GENERAL NOTES: (UNLESS OTHERWISE SPECIFIED)
- MATING TERMINAL SHOWN ON SD-33012-002
  - MATERIAL: ASTM B422, UNS C19025, HR04  
THICKNESS: 0.30 mm ±0.01  
TEMPER: FULL HARD (REF)  
TENSILE: 496-572 MPA
  - TIN PLATED TERMINAL FINISH:  
OVERALL UNDERPLATE ELECTRODEPOSITED NICKEL  
OVERALL ELECTRODEPOSITED REFLOW TIN
  - GOLD PLATED TERMINAL FINISH  
OVERALL UNDERPLATE ELECTRODEPOSITED DUCTILE SULFAMATE NICKEL  
CONTACT AREA - ELECTRODEPOSITED GOLD  
GRIP AREA - ELECTRODEPOSITED 100% TIN MATTE FINISH
  - SILVER PLATED TERMINAL FINISH  
OVERALL UNDERPLATE ELECTRODEPOSITED DUCTILE SULFAMATE NICKEL  
CONTACT AREA - ELECTRODEPOSITED PURE SILVER (0.5% MAX IMPURITIES) SEMI-BRIGHT FINISH  
- SILVER ANTI-TARNISH : EVABRITE  
GRIP AREA - ELECTRODEPOSITED 100% TIN MATTE FINISH
  - MEETS CRIMP PERFORMANCE SPECIFICATION SAE/USCAR-21 (8/2001)
  - MEETS PERFORMANCE STANDARD FOR AUTOMOTIVE ELECTRICAL CONNECTOR SYSTEMS SAE/USCAR-2 REV 3 (APRIL 2001)
  - MEETS FIELD CORRELATED LIFE TEST SAE/USCAR-20 (11/2001)
  - MEETS WIRING COMPONENT DESIGN GUIDELINES SAE/USCAR-12 REV 2 (12/2001)
  - MEETS ELECTRICAL CONNECTION SYSTEM DESIGN SPECIFICATION (SDS) REV 11 (5/2002)
  - REFERENCE PK-31300-516 FOR REEL DIRECTION
  - REFERENCE AS-33000-001 FOR CRIMP INFORMATION



SYMBOLS		THIS DRAWING CONTAINS INFORMATION THAT IS PROPRIETARY TO MOLEX ELECTRONIC TECHNOLOGIES, LLC AND SHOULD NOT BE USED WITHOUT WRITTEN PERMISSION	
▽ = 0	mm	SCALE	4:1
▽ = 0	GENERAL TOLERANCES (UNLESS SPECIFIED)		
▽ = 0	ANGULAR TOL ± 3.0°		
▽ = 0	4 PLACES	±	
▽ = 0	3 PLACES	±	
▽ = 0	2 PLACES	±	0.10
▽ = 0	1 PLACE	±	0.3
▽ = 0	0 PLACES	±	
▽ = 0	DRAFT WHERE APPLICABLE MUST REMAIN WITHIN DIMENSIONS		
CURRENT REV DESC:		EC NO: 631014	
		DRWN: NVENKATESHSH 2019/05/11	
		CHK'D: ADHIR 2020/03/06	
		APPR: ADHIR 2020/03/06	
		INITIAL REVISION:	
		DRWN: LPULLIAM 2006/01/31	
		APPR: bmoser 2006/02/02	
THIRD ANGLE PROJECTION		DRAWING	SERIES
C-SIZE		33000	
DOCUMENT NUMBER		DOC TYPE	DOC PART
SD-33000-001		PSD	001
MATERIAL NUMBER		CUSTOMER	SHEET NUMBER
SEE TABLE		GENERAL MARKET	1 OF 5

FAMILY	GENDER	SEALING	PLATING	PART NUMBER	PAYOFF DIRECTION	GRIP CODE	WIRE SIZES*	A ±0.30	B ±0.30	C ±0.30	D ±0.30	SPECIAL CHARACTERISTICS
MX150	BLADE	MAT SEAL UNSEALED	Sn	33000-0001	RIGHT (B)	14	14AWG	3.9	3.8	1.7	1.6	HIGH PERFORMANCE Sn
				33000-1001	LEFT (D)		1.50-2.00mm <sup>2</sup>					
				33000-0002	RIGHT (B)	18	20/18/16AWG	3.3	3.1	1.3	1.4	
				33000-1002	LEFT (D)		0.75-1.25mm <sup>2</sup>					
				33000-0003	RIGHT (B)	22	22AWG	2.5	2.6	0.9	1.0	
				33000-1003	LEFT (D)							
			33000-0004	RIGHT (B)	M3	0.35-0.50mm <sup>2</sup>	2.5	2.7	0.9	1.54 ±0.1		
			33000-1004	LEFT (D)								
			Au	33011-1002	RIGHT (B)	14	14AWG	3.9	3.8	1.7	1.6	HIGH PERFORMANCE Au
				33011-0002	LEFT (D)		1.50-2.00mm <sup>2</sup>					
				33011-1004	RIGHT (B)	18	20/18/16AWG	3.3	3.1	1.3	1.4	
				33011-0004	LEFT (D)		0.75-1.25mm <sup>2</sup>					
				33011-1006	RIGHT (B)	22	22AWG	2.5	2.6	0.9	1.0	
				33011-0006	LEFT (D)							
			33011-1008	RIGHT (B)	M3	0.35-0.50mm <sup>2</sup>	2.5	2.7	0.9	1.54 ±0.1		
			33011-0008	LEFT (D)								
			Ag	33011-2003	RIGHT (B)	14	14AWG	3.9	3.8	1.7	1.6	HIGH PERFORMANCE Ag
				33011-3003	LEFT (D)		1.50-2.00mm <sup>2</sup>					
				33011-2002	RIGHT (B)	18	20/18/16AWG	3.3	3.1	1.3	1.4	
				33011-3002	LEFT (D)		0.75-1.25mm <sup>2</sup>					
				33011-2001	RIGHT (B)	22	22AWG	2.5	2.6	0.9	1.0	
33011-3001	LEFT (D)											
33011-2004	RIGHT (B)	M3	0.35-0.50mm <sup>2</sup>	2.5	2.7	0.9	1.54 ±0.1					
33011-3004	LEFT (D)											

\* REFERENCE AS-33000-001 FOR SPECIFIC WIRE TYPES

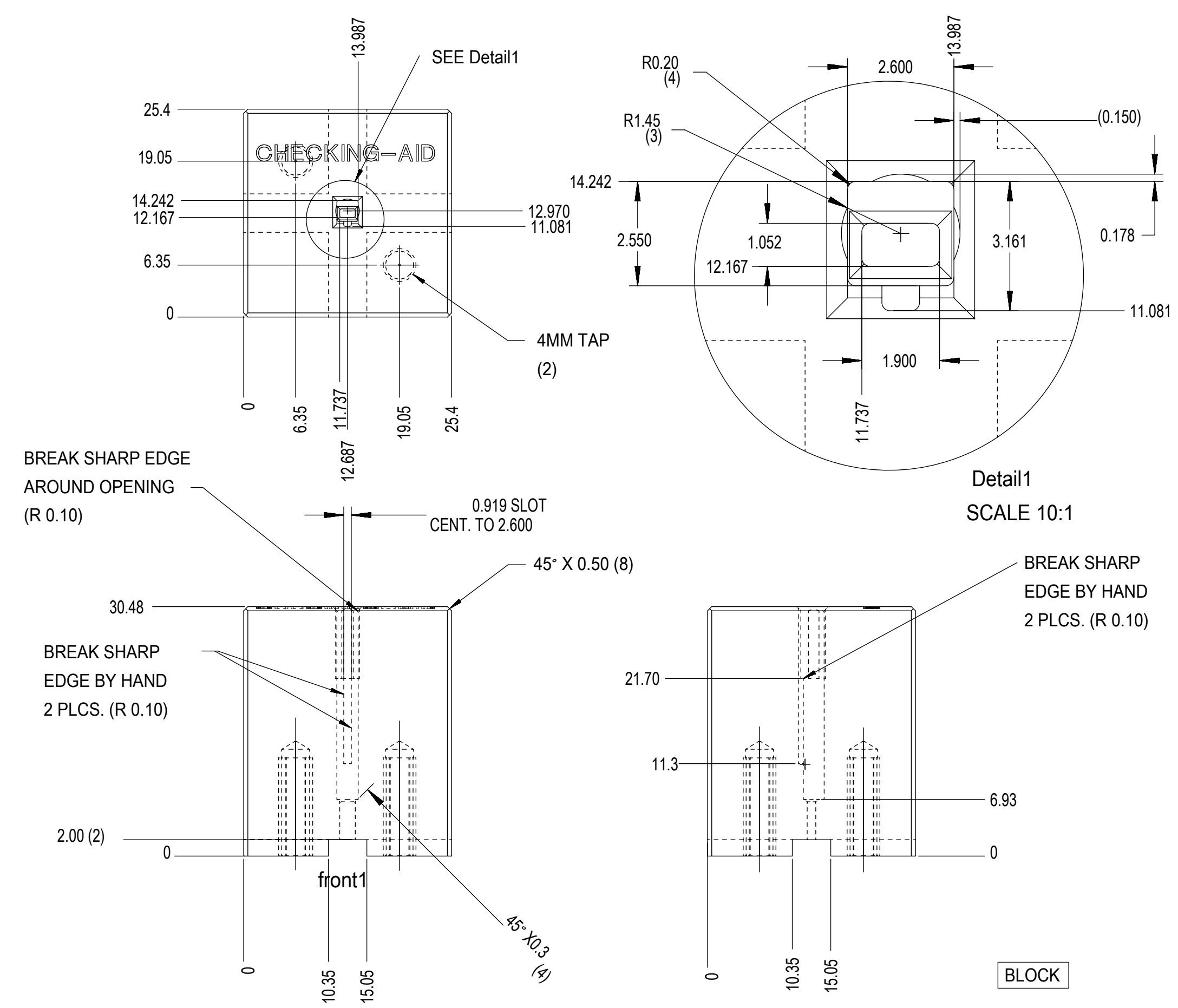
<b>SYMBOLS</b> ▽ = 0 ▽ = 0 ▽ = 0 ▽ = 0 ▽ = 0 ▽ = 0 ▽ = 0 ▽ = 0 ▽ = 0 ▽ = 0	THIS DRAWING CONTAINS INFORMATION THAT IS PROPRIETARY TO MOLEX ELECTRONIC TECHNOLOGIES, LLC AND SHOULD NOT BE USED WITHOUT WRITTEN PERMISSION					
	DIMENSION UNITS	SCALE	CURRENT REV DESC:			
	mm		EC NO: 631014			
	GENERAL TOLERANCES (UNLESS SPECIFIED)		DRWN: NVENKATESHSH	2019/05/11		
	ANGULAR TOL ± 3.0°		CHK'D: ADHIR	2020/03/06		
	4 PLACES ±		APPR: ADHIR	2020/03/06		
	3 PLACES ±		INITIAL REVISION:			
	2 PLACES ± 0.10		DRWN: LPULLIAM	2006/01/31		
	1 PLACE ± 0.3		APPR: bmoser	2006/02/02		
	0 PLACES ±		THIRD ANGLE PROJECTION			
DRAFT WHERE APPLICABLE MUST REMAIN WITHIN DIMENSIONS		DRAWING	SERIES	MATERIAL NUMBER	CUSTOMER	SHEET NUMBER
		C-SIZE	33000	SEE TABLE	GENERAL MARKET	2 OF 5



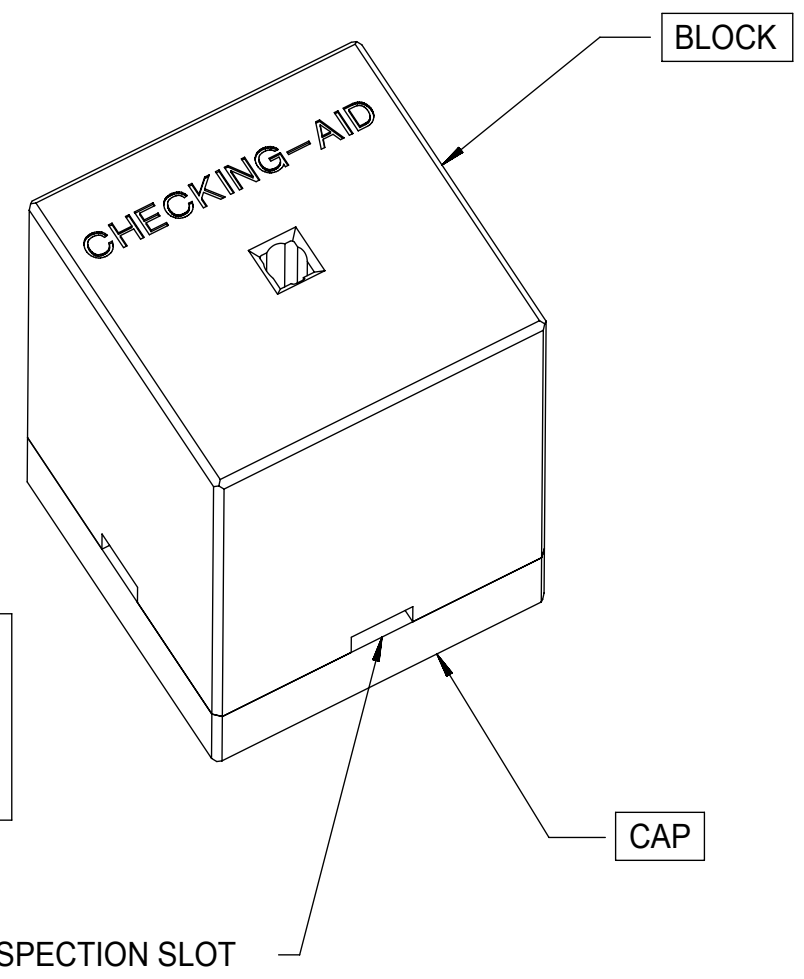
MX150 1.5MM BLADE TERMINAL

PRODUCT CUSTOMER DRAWING

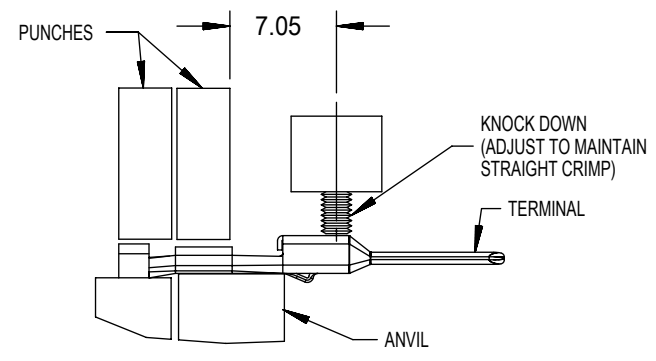
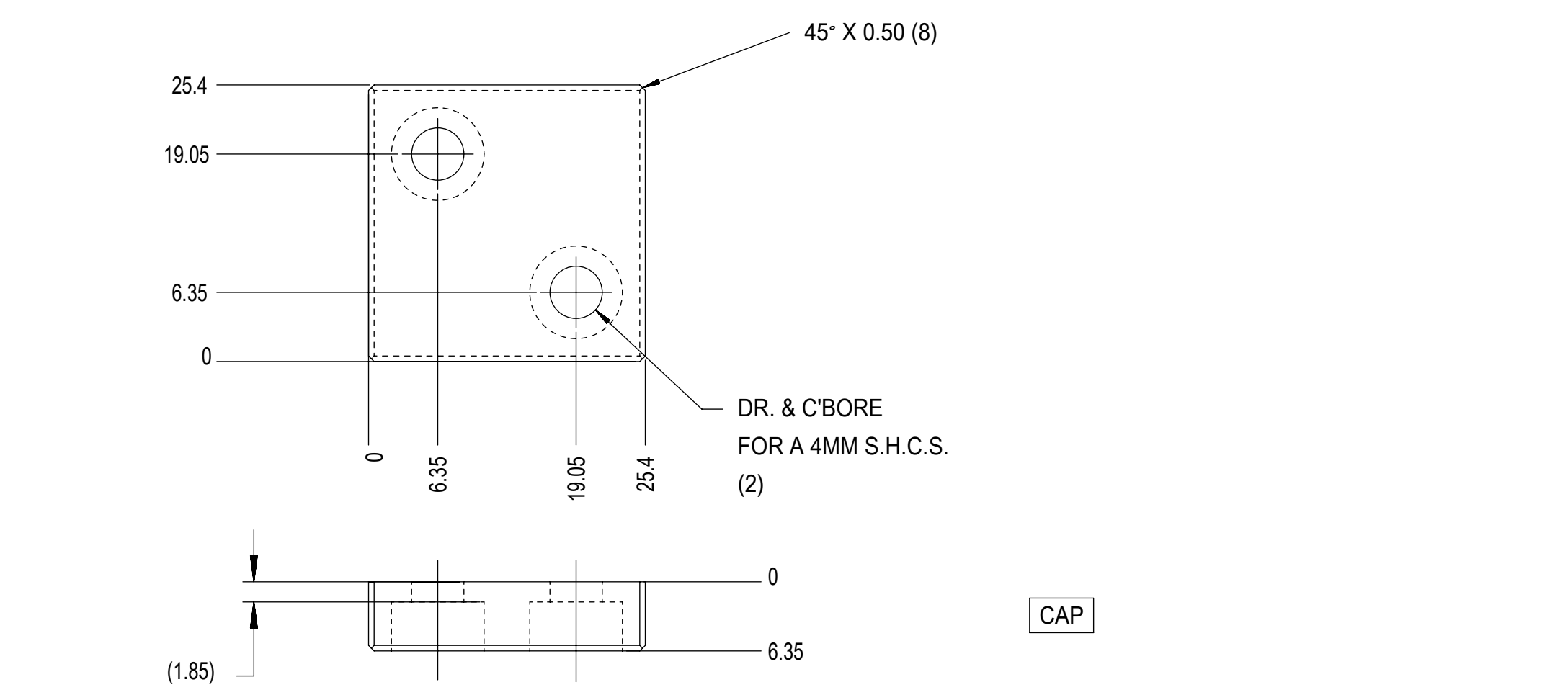
DOCUMENT NUMBER	DOC TYPE	DOC PART	REVISION
SD-33000-001	PSD	001	D2



CHECKING-AID  
 2 PIECE ASM. A2 TOOL STEEL  
 HARDEN & GRIND TO A ROCKWELL  
 HARDNESS "C" SCALE OF 56-58



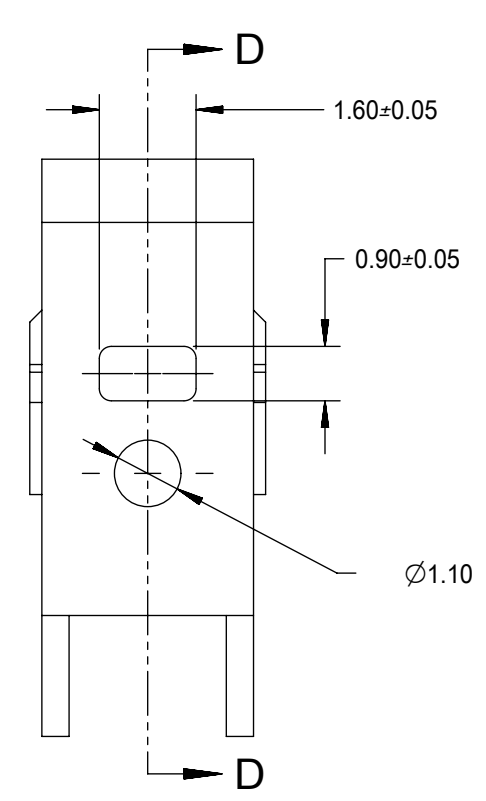
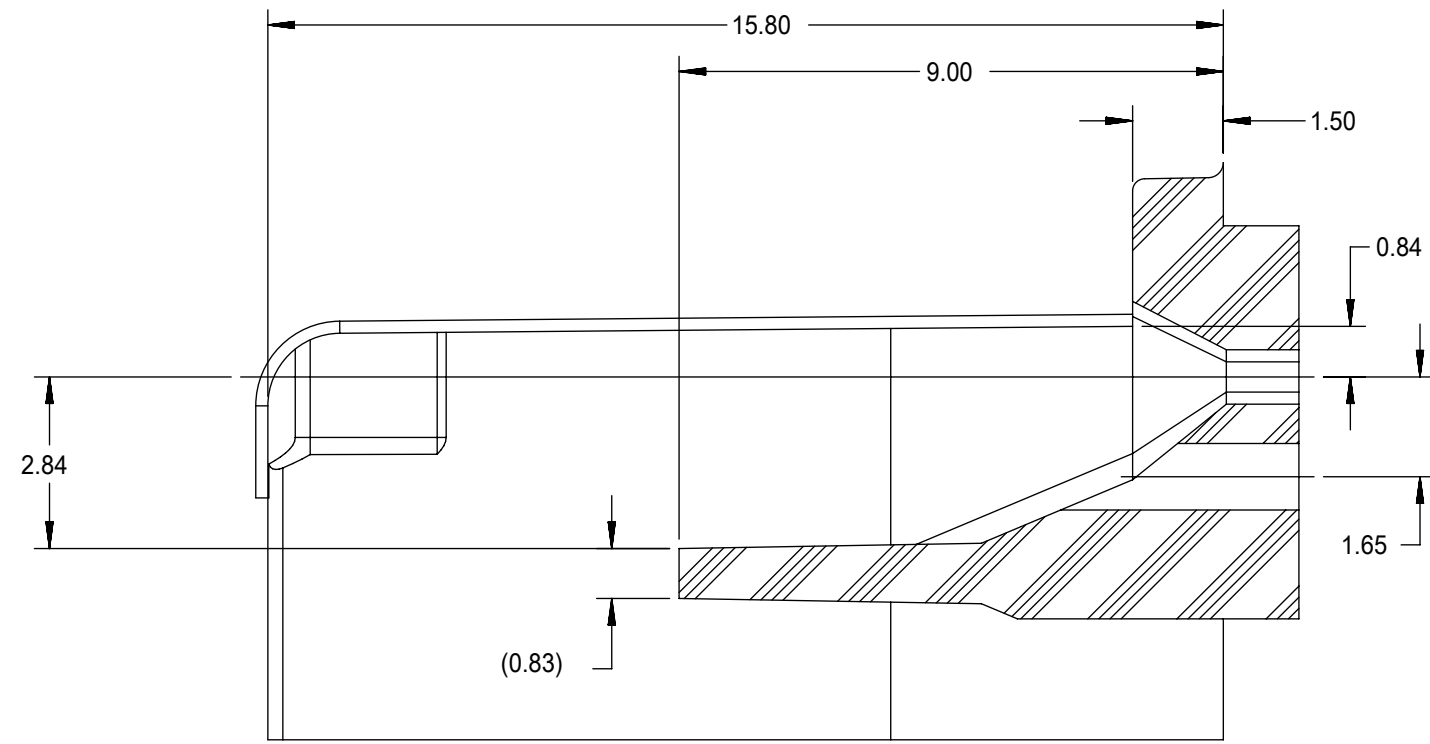
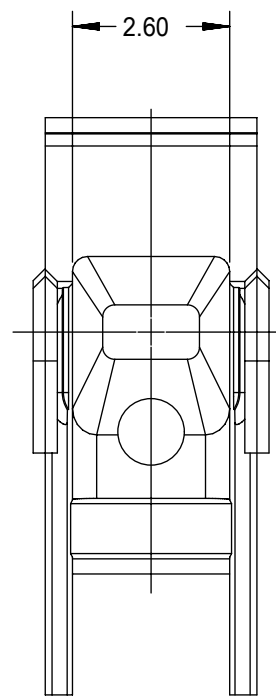
CHECKING AID TOLERANCE  
 .XXX = .005  
 .XX = .03  
 .X = .3



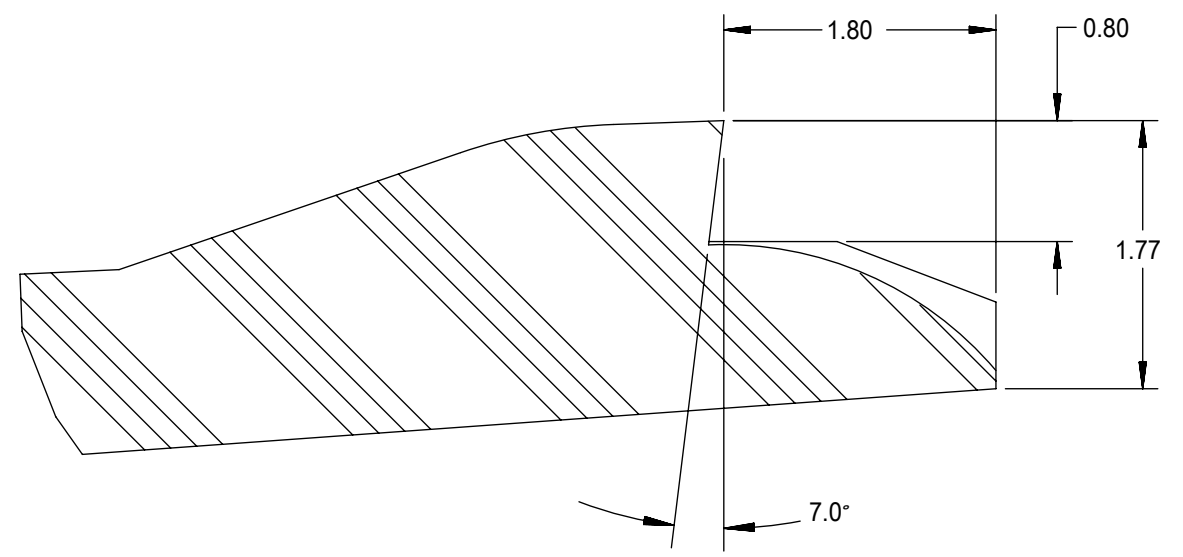
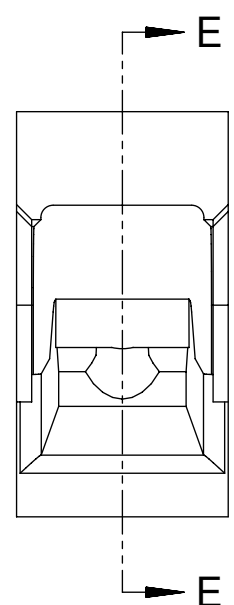
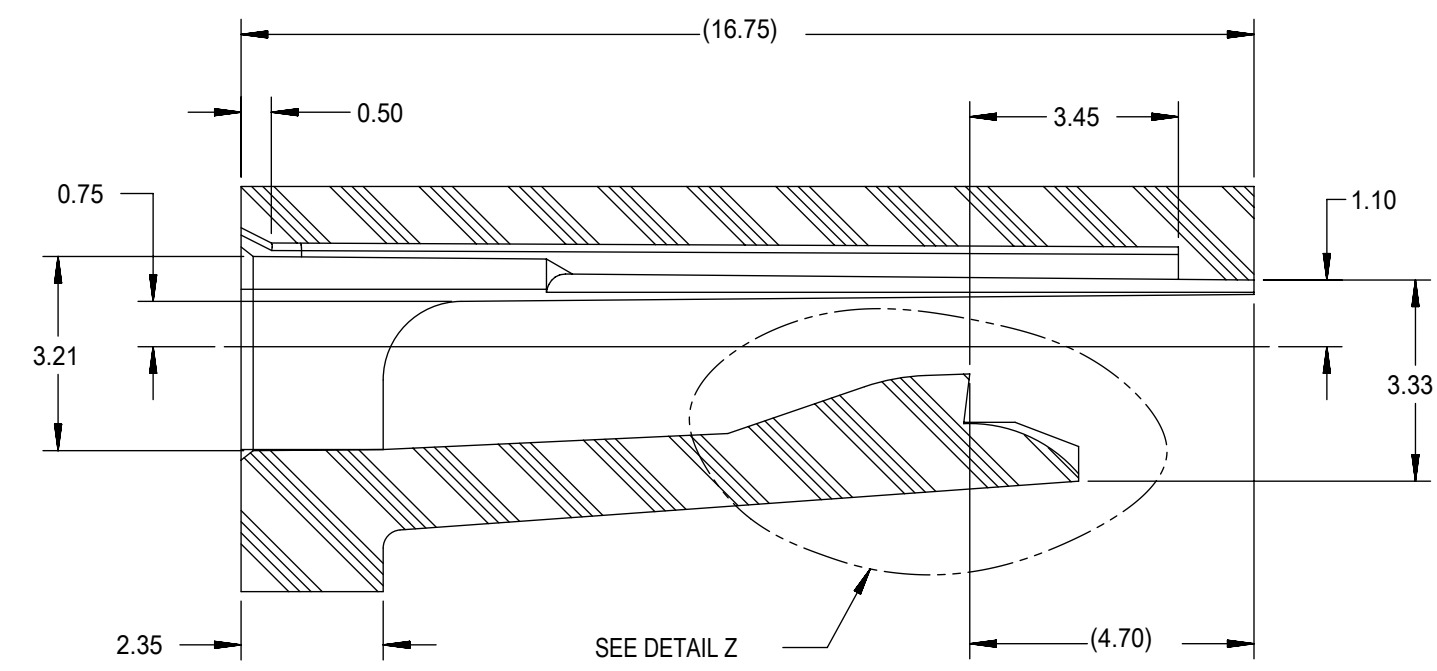
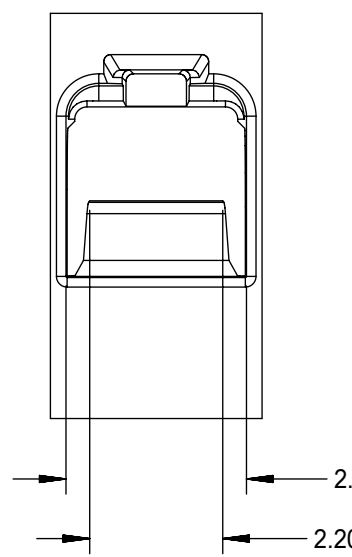
CRIMP TOOLING  
 SCALE 2:1

- CRIMP REQUIREMENTS:
1. CRIMP STRAIGHTNESS MUST BE MAINTAINED. USE A KNOCKDOWN TOOL LOCATED AS SHOWN. TERMINAL BOX MUST NOT BE DEFORMED
  2. AFTER CRIMPING, THE TERMINAL AND WIRE MUST FIT FREELY INTO THE CHECKING AID 33000-700. PROPER INSERTION DEPTH IS MET WHEN BLADE TIP STOPS ON CAP. SLOTS PROVIDED TO VISUALLY INSPECT STOPAGE OF PIN TIP.
  3. FOR OTHER MECHANICAL REQUIREMENTS ON CRIMPED TERMINALS, REFER TO SAE/USCAR-21 (5-13-02) SECTIONS 4.2 (VISUAL INSPECTION), 4.3 (CROSS SECTION ANALYSIS) AND 4.4 (CONDUCTOR CRIMP PULLOUT FORCE)

THIS DRAWING CONTAINS INFORMATION THAT IS PROPRIETARY TO MOLEX ELECTRONIC TECHNOLOGIES, LLC AND SHOULD NOT BE USED WITHOUT WRITTEN PERMISSION											
SYMBOLS		DIMENSION UNITS		SCALE		CURRENT REV DESC:					
▽ = 0 ▽ = 0 ▽ = 0 ▽ = 0 ▽ = 0 ▽ = 0 ▽ = 0 ▽ = 0 ▽ = 0 ▽ = 0		mm		2:1		EC NO: 631014 DRWN: NVENKATESHSH 2019/05/11 CHK'D: ADHIR 2020/03/06 APPR: ADHIR 2020/03/06					
▽ = 0 ▽ = 0 ▽ = 0 ▽ = 0 ▽ = 0 ▽ = 0 ▽ = 0 ▽ = 0 ▽ = 0		GENERAL TOLERANCES (UNLESS SPECIFIED)		ANGULAR TOL ± 3.0°		INITIAL REVISION: DRWN: LPULLIAM 2006/01/31 APPR: bmoser 2006/02/02				PRODUCT CUSTOMER DRAWING	
▽ = 0 ▽ = 0 ▽ = 0 ▽ = 0 ▽ = 0 ▽ = 0 ▽ = 0 ▽ = 0 ▽ = 0		4 PLACES ±		2 PLACES ± 0.10		DOCUMENT NUMBER SD-33000-001				DOC TYPE DOC PART REVISION	
▽ = 0 ▽ = 0 ▽ = 0 ▽ = 0 ▽ = 0 ▽ = 0 ▽ = 0 ▽ = 0 ▽ = 0		1 PLACE ± 0.3		0 PLACES ±		MATERIAL NUMBER SEE TABLE				CUSTOMER GENERAL MARKET	
▽ = 0 ▽ = 0 ▽ = 0 ▽ = 0 ▽ = 0 ▽ = 0 ▽ = 0 ▽ = 0 ▽ = 0		DRAFT WHERE APPLICABLE MUST REMAIN WITHIN DIMENSIONS		THIRD ANGLE PROJECTION		DRAWING C-SIZE		SERIES 33000		SHEET NUMBER 3 OF 5	

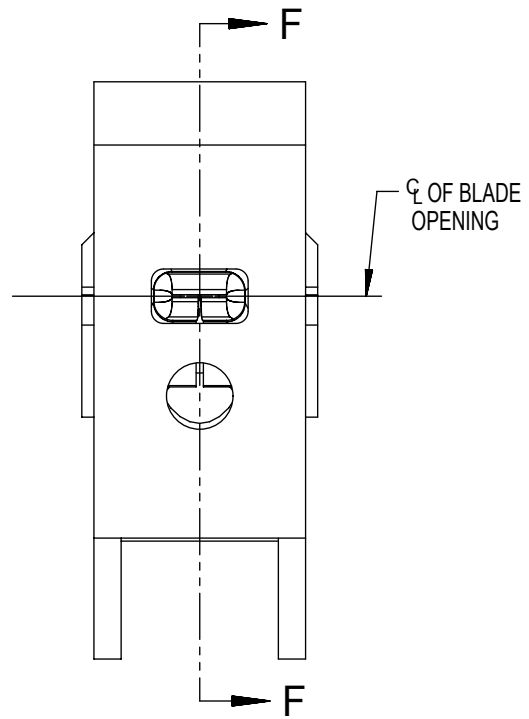
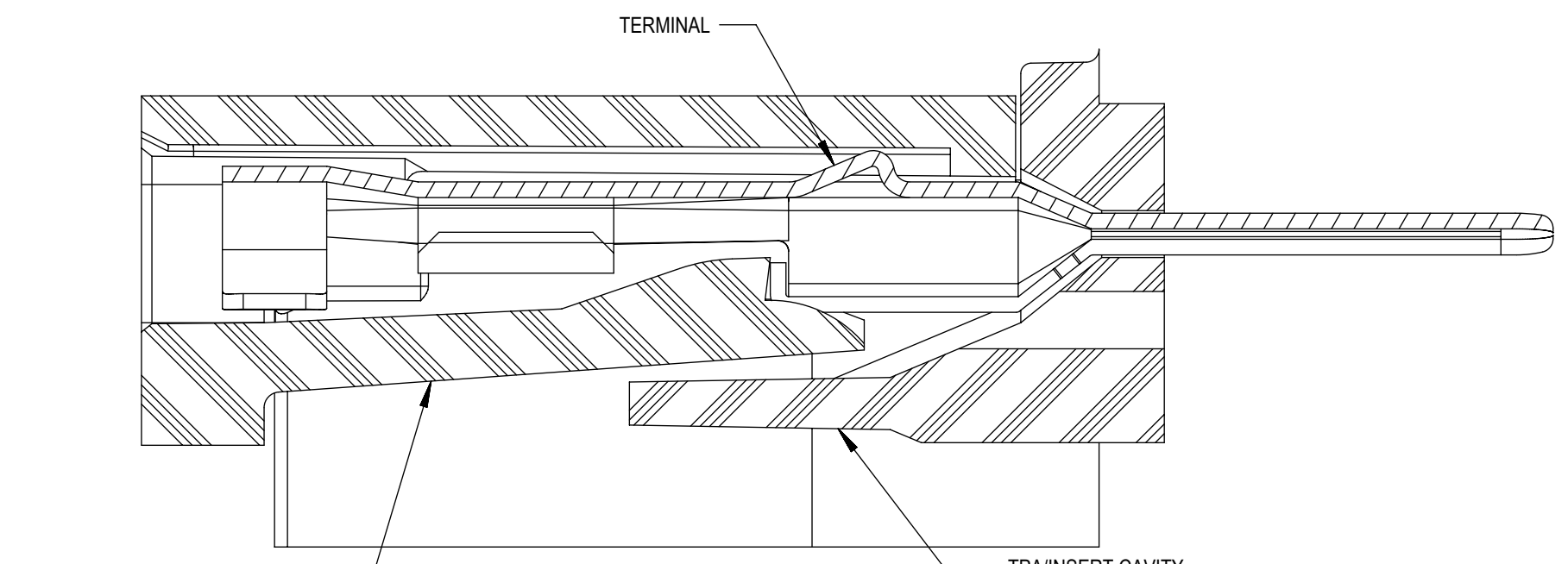
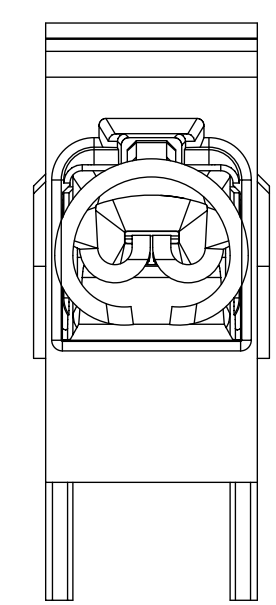


SECTION D-D TPA/INSERT DETAIL



DETAIL Z SCALE 20:1

SECTION E-E HOUSING DETAIL



BLADE TERMINAL HOUSING CAVITY

SECTION F-F

BLADE CAVITY ASSEMBLY VIEWS

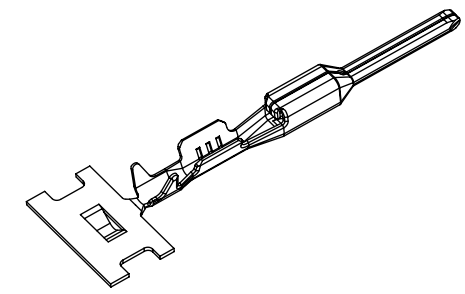
- NOTES: (UNLESS OTHERWISE SPECIFIED)
1. TOLERANCES: LINEAR ±0.10  
ANGULAR 3°
  2. ALL DRAFT WITHIN TOLERANCE
  3. MAX RADII ON ALL CORNERS SHOWN SHARP: 0.10
  4. MAX FLASH PERMISSIBLE: 0.1
  5. EJECTOR PIN MARKS PERMISSIBLE IF FLUSH TO 0.25 BELOW SURFACE
  6. MATERIAL: HOUSING/FINGER SPECIFICATION ENGINEERED FOR MATERIAL WITH THE FOLLOWING PROPERTIES:  
A. FLEXURAL MODULUS = 4,500 TO 9,400 MPa  
PER ASTM TEST D790  
B. ELONGATION AT YIELD = 2.3% OR BETTER  
PER ASTM TEST D638 TYPE V
  7. CAVITY SPEC FOR USE ONLY WITH MOLEX BLADE TERMINAL PART NUMBERS (EXCEPT PIN'S FOR UNSEALED APPLICATIONS) SPECIFIED ELSEWHERE ON THIS DRAWING

THIS DRAWING CONTAINS INFORMATION THAT IS PROPRIETARY TO MOLEX ELECTRONIC TECHNOLOGIES, LLC AND SHOULD NOT BE USED WITHOUT WRITTEN PERMISSION									
SYMBOLS		DIMENSION UNITS		SCALE		CURRENT REV DESC:			
▽ = 0		mm				EC NO: 631014			
▽ = 0		GENERAL TOLERANCES (UNLESS SPECIFIED)				DRWN: NVENKATESHSH 2019/05/11			
▽ = 0		ANGULAR TOL ± 3.0°				CHK'D: ADHIR 2020/03/06			
▽ = 0		4 PLACES ±				APPR: ADHIR 2020/03/06			
▽ = 0		3 PLACES ±				INITIAL REVISION:			
▽ = 0		2 PLACES ± 0.10				DRWN: LPULLIAM 2006/01/31			
▽ = 0		1 PLACE ± 0.3				APPR: bmoser 2006/02/02			
▽ = 0		0 PLACES ±				THIRD ANGLE PROJECTION		DRAWING SERIES	
▽ = 0		DRAFT WHERE APPLICABLE MUST REMAIN WITHIN DIMENSIONS				C-SIZE		33000	
						MATERIAL NUMBER		CUSTOMER	
						SEE TABLE		GENERAL MARKET	
						DOCUMENT NUMBER		DOC TYPE DOC PART REVISION	
						SD-33000-001		PSD 001 D2	
						SHEET NUMBER		4 OF 5	

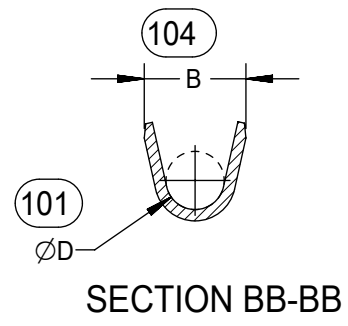
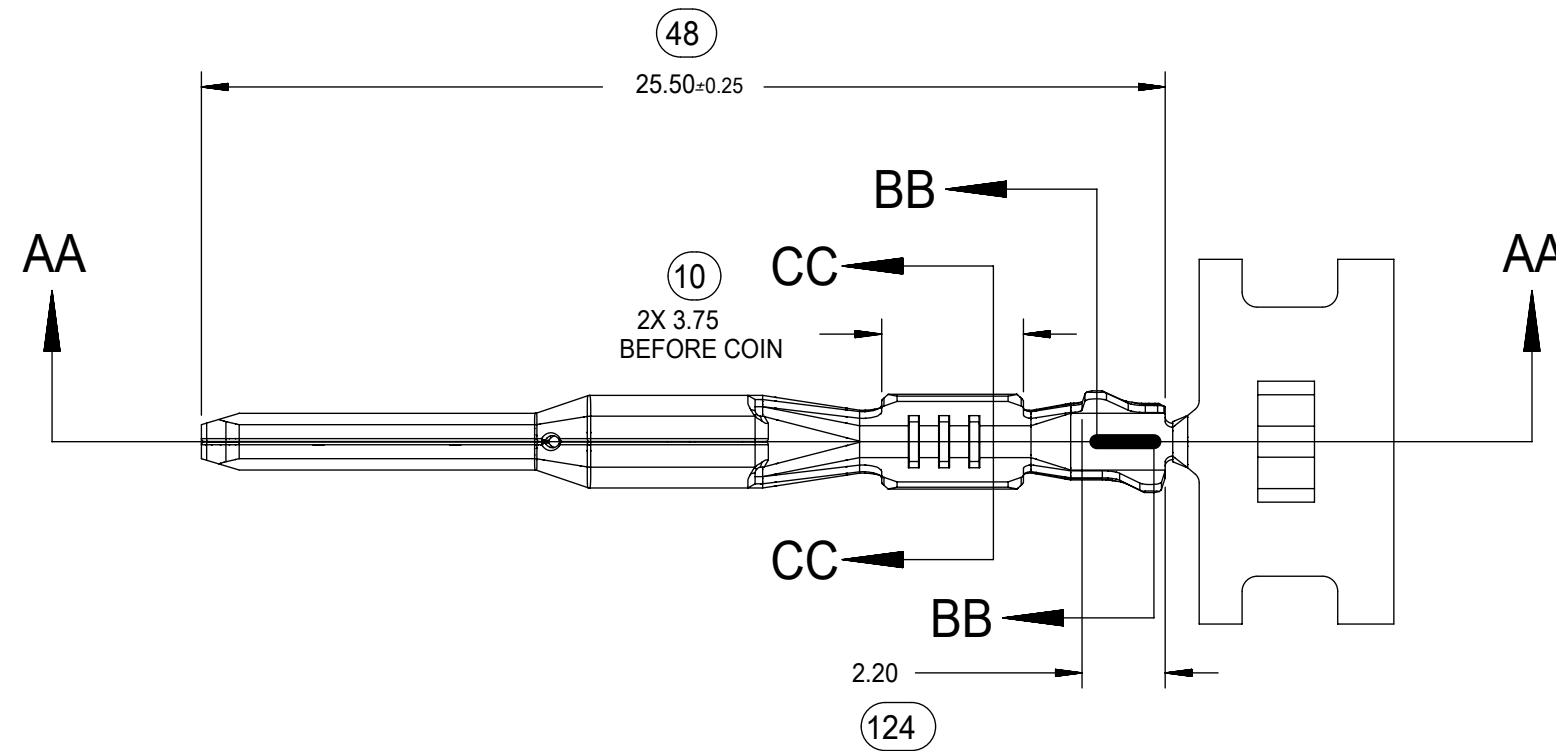


MX150 1.5MM BLADE TERMINAL

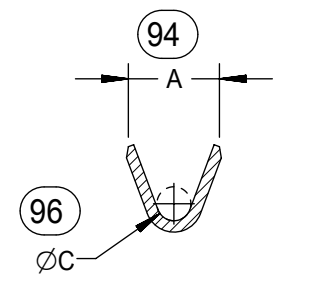
PRODUCT CUSTOMER DRAWING



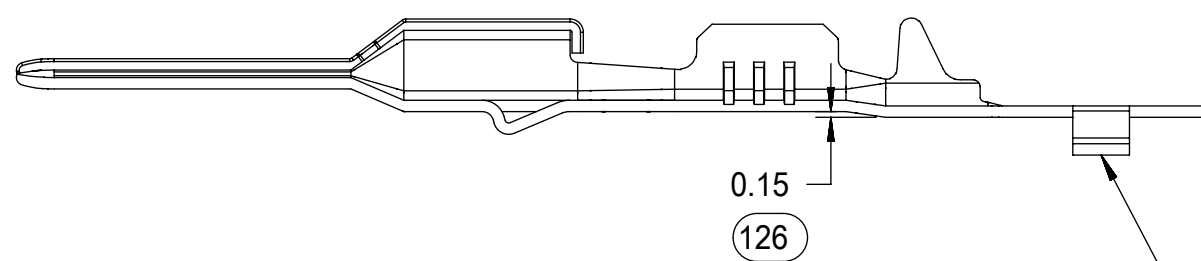
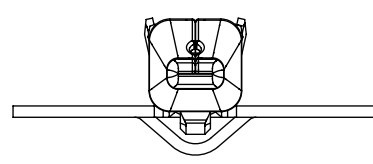
ISO VIEW  
SCALE 2:1



SECTION BB-BB



SECTION CC-CC



SECTION AA-AA  
M3 GRIP CODE TERMINAL  
SEE TABLE (SHEET 2) FOR PART NUMBERS

CARRIER BUMP DIRECTION  
POINTS DOWN FOR TIN PLATED TERMINALS  
POINTS UP FOR PRECIOUS METAL PLATED  
TERMINALS

THIS DRAWING CONTAINS INFORMATION THAT IS PROPRIETARY TO MOLEX ELECTRONIC TECHNOLOGIES, LLC AND SHOULD NOT BE USED WITHOUT WRITTEN PERMISSION									
SYMBOLS		DIMENSION UNITS		SCALE		CURRENT REV DESC:			
▽ = 0	mm	5:1		EC NO: 631014 DRWN: NVENKATESHSH 2019/05/11 CHK'D: ADHIR 2020/03/06 APPR: ADHIR 2020/03/06 INITIAL REVISION: DRWN: LPULLIAM 2006/01/31 APPR: bmoser 2006/02/02					
▽ = 0	GENERAL TOLERANCES (UNLESS SPECIFIED)								
▽ = 0	ANGULAR TOL ± 3.0°								
▽ = 0	4 PLACES ±								
▽ = 0	3 PLACES ±								
▽ = 0	2 PLACES ± 0.10			PRODUCT CUSTOMER DRAWING DOCUMENT NUMBER: SD-33000-001 DOC TYPE: PSD DOC PART: 001 REVISION: D2					
▽ = 0	1 PLACE ± 0.3								
▽ = 0	0 PLACES ±			MATERIAL NUMBER		CUSTOMER		SHEET NUMBER	
▽ = 0	DRAFT WHERE APPLICABLE MUST REMAIN WITHIN DIMENSIONS			THIRD ANGLE PROJECTION		DRAWING		SERIES	
▽ = 0				C-SIZE		33000		SEE TABLE GENERAL MARKET 5 OF 5	

**molex**

MX150 1.5MM BLADE  
TERMINAL

PRODUCT CUSTOMER DRAWING

SD-33000-001

PSD 001 D2