



产品编号 : [357450310](#)

Product Description : VersaBlade Male Crimp Terminal, 18+18, 20+20 AWG, Type A

系列号 : 35745

状态 : Active

Product Category : Crimp Terminals



文件和资源

图纸

[图纸 357450310_sd.pdf](#)

3D 模型和设计文件

[3D模型 357450310_stp.zip](#)

规格

[应用规格 351500000AS_ENG-000.pdf](#)

[应用规格 351500000AS_KOR-000.pdf](#)

[包装规格 PK-35745-001-001.pdf](#)

[产品规格 PS-35182-003-001.pdf](#)

[产品规格 PS-35150-001-001.pdf](#)

[产品规格 351800400-001.pdf](#)

[产品规格 351800600-001.pdf](#)

模具规格

[压接规格 CS-35745-001-001.pdf](#)

[压接规格 CS-35745-001-002.pdf](#)

产物环境合规

合规

GADSL/IMDS	Compliant with Exemption 44
China RoHS	
EU ELV	Not Relevant
Low-Halogen Status	Low-Halogen per IEC 61249-2-21
REACH SVHC	Not Contained per D(2023)3788-DC (14 Jun 2023)
EU RoHS	Compliant per EU 2015/863

[多部分产品合规性声明](#)

- Eu RoHS
- REACH SVHC
- Low-Halogen

多部分行业合规性文件

- IPC 1752A Class C
- IPC 1752A Class D
- Molex Product Compliance Declaration
- IEC-62474
- chemSHERPA (xml)

欧盟 RoHS 合格证书

产品详情

常规

状态	活动
类别	Crimp Terminals
系列	35745
说明	VersaBlade Male Crimp Terminal, 18+18, 20+20 AWG, Type A
应用	Power, Wire-to-Wire
产品系列	VersaBlade Wire-to-Wire Connector System
产品名称	VersaBlade
UPC	800754378451

物理

耐用性(插拔次数) - 最多次数	30
性别	男
材料 - 金属	Brass
材料 - 接合部位电镀	Tin
材料 - 终端电镀	Tin
净重	0.333/g
包装形式	Reel
终端界面类型	Crimp or Compression
导线绝缘直径	2.8mm + 2.8mm max.
线径规格 (AWG)	18+18, 20+20
线缆尺寸mm ²	2(0.50-0.85)

进程

无铅	不适用
----	-----

可连接使用部件

描述	产品编号
VersaBlade Hybrid Plug Housing, 3 Circuits, Positive Lock, Natural	/content/molex/molex-dot-com/cn/zh/products/product-page.html/351510310.html
VersaBlade Hybrid Plug Housing, 3 Circuits, Positive Lock, Blue	/content/molex/molex-dot-com/cn/zh/products/product-page.html/351510314.html
VersaBlade Hybrid Plug Housing, 3 Circuits, Positive Lock, Natural, Glow-Wire Capable	/content/molex/molex-dot-com/cn/zh/products/product-page.html/351510319.html
VersaBlade Hybrid Plug Housing, 4 Circuits, Positive Lock, Natural	/content/molex/molex-dot-com/cn/zh/products/product-page.html/351510410.html
VersaBlade Hybrid Plug Housing, 4 Circuits, Positive Lock, Red	/content/molex/molex-dot-com/cn/zh/products/product-page.html/351510412.html
VersaBlade Hybrid Plug Housing, 4 Circuits, Positive Lock, Blue	/content/molex/molex-dot-com/cn/zh/products/product-page.html/351510414.html
VersaBlade Hybrid Plug Housing, 4 Circuits, Positive Lock, Natural, Glow-Wire Capable	/content/molex/molex-dot-com/cn/zh/products/product-page.html/351510419.html
VersaBlade Hybrid Plug Housing, 6 Circuits, Positive Lock, Natural	/content/molex/molex-dot-com/cn/zh/products/product-page.html/351510610.html
VersaBlade Hybrid Plug Housing, 6 Circuits, Positive Lock, Blue	/content/molex/molex-dot-com/cn/zh/products/product-page.html/351510614.html
VersaBlade Hybrid Plug Housing, 6 Circuits, Positive Lock, Natural, Glow-Wire Capable	/content/molex/molex-dot-com/cn/zh/products/product-page.html/351510619.html
VersaBlade Hybrid Plug Housing, 3 Circuits, Positive Lock, Yellow, Glow-Wire Capable	/content/molex/molex-dot-com/cn/zh/products/product-page.html/351513319.html
VersaBlade Hybrid Plug Housing, 4 Circuits, Positive Lock, Yellow, Glow-Wire Capable	/content/molex/molex-dot-com/cn/zh/products/product-page.html/351513419.html

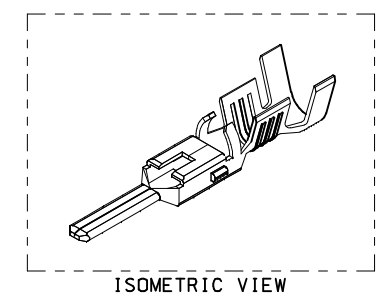
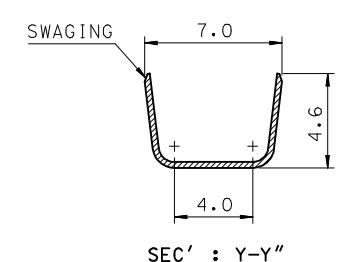
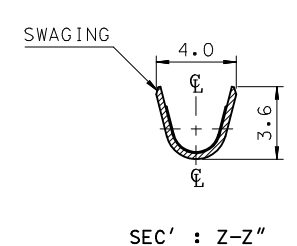
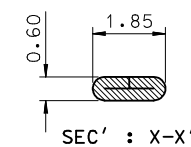
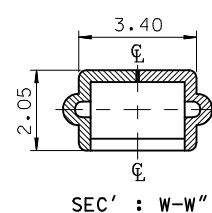
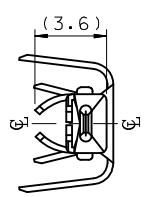
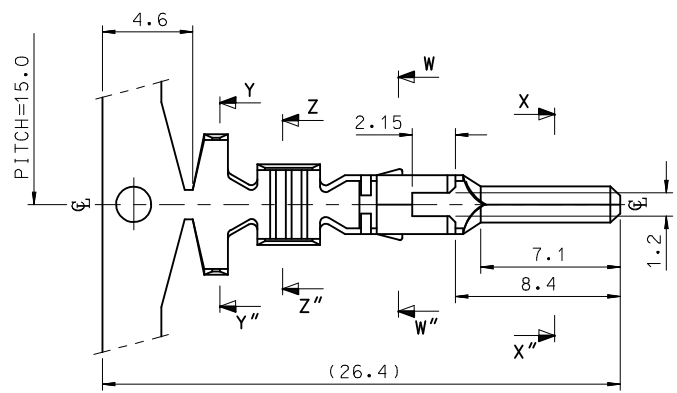
VersaBlade Hybrid Plug Housing, 6 Circuits, Positive Lock, Yellow, Glow-Wire Capable	/content/molex/molex-dot-com/cn/zh/products/product-page.html/351513619.html
VersaBlade Hybrid Plug Housing, 3 Circuits, Positive Lock, Blue, Glow-Wire Capable	/content/molex/molex-dot-com/cn/zh/products/product-page.html/351514319.html
VersaBlade Hybrid Plug Housing, 4 Circuits, Positive Lock, Blue, Glow-Wire Capable	/content/molex/molex-dot-com/cn/zh/products/product-page.html/351514419.html
VersaBlade Hybrid Plug Housing, 6 Circuits, Positive Lock, Blue, Glow-Wire Capable	/content/molex/molex-dot-com/cn/zh/products/product-page.html/351514619.html
VersaBlade Multi-Module 2-3-4 Hybrid Receptacle Housing, 9 Circuits, Full Flange Panel Mount, Natural, Glow-Wire Capable	/content/molex/molex-dot-com/cn/zh/products/product-page.html/2026500909.html
VersaBlade Multi-Module 2-2 Hybrid Receptacle Housing, without Mounting Ears, 4 Circuits, Natural, Glow-Wire Capable	/content/molex/molex-dot-com/cn/zh/products/product-page.html/2041020429.html
VersaBlade Multi-Module 4-2 Hybrid Receptacle Housing, 6 Circuits, Natural, Glow-Wire Capable	/content/molex/molex-dot-com/cn/zh/products/product-page.html/2041020609.html
VersaBlade Multi-Module Hybrid Plug Housing, 4 Circuits, Friction Lock, Natural, Glow-Wire Capable	/content/molex/molex-dot-com/cn/zh/products/product-page.html/2041020409.html
VersaBlade Multi-Module Hybrid Plug Housing, 4 Circuits, Positive Lock, Natural, Glow-Wire Capable	/content/molex/molex-dot-com/cn/zh/products/product-page.html/2041020419.html
VersaBlade Multi-Module Hybrid Plug Housing, 2 Circuits, Friction Lock, Type B, Natural	/content/molex/molex-dot-com/cn/zh/products/product-page.html/351810210.html
VersaBlade Multi-Module Hybrid Plug Housing, 2 Circuits, Friction Lock, Type B, Blue	/content/molex/molex-dot-com/cn/zh/products/product-page.html/351810214.html
VersaBlade Multi-Module Hybrid Plug Housing, 2 Circuits, Positive Lock, Type B, Natural, Glow-Wire Capable	/content/molex/molex-dot-com/cn/zh/products/product-page.html/359659210.html
VersaBlade Multi-Module Hybrid Plug Housing, 2 Circuits, Positive Lock, Type B, Yellow, Glow-Wire Capable	/content/molex/molex-dot-com/cn/zh/products/product-page.html/359659213.html
VersaBlade Hybrid Receptacles Housings and TPAs	35150

VersaBlade Multi-Module Hybrid Receptacle Housings	<u>35180</u>
VersaBlade Multi-Module 2-3-4 Hybrid Receptacle Housings	<u>35524</u>

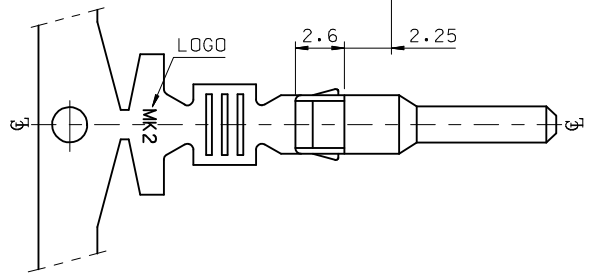
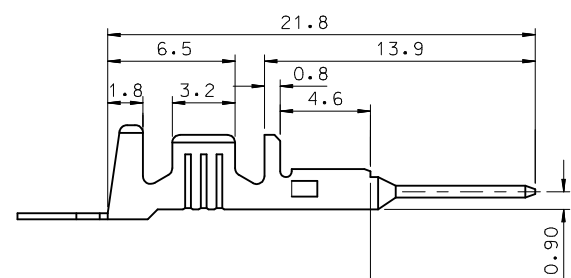
施工工具

全局

描述	产品编号
Extraction and Activation Tool	<u>0638132700</u>
Hand Crimp Tool for 1.80mm-Wide Crimp Terminals	<u>0638190700</u>
T2 Terminator Die	<u>0638529200</u>
FineAdjust Applicator	<u>0638629200</u>
FineAdjust Applicator for VersaBlade .070 Male and Female Terminals, 20+20AWG, 20+18 AWG and 18+18 AWG	<u>0639044000</u>



- NOTES.
1. MATERIAL : C BRASS, PRE-TIN PLATED
 2. FINISH : 0.8~1.8 μm , Tin(Sn) plating overall
0.3~0.8 μm , Copper(Cu) plating
 3. PRODUCT SPECIFICATION : PS-35150-001, PS-35180-002
PS-35180-003, PS-35182-003, PS-35524-001
 4. CRIMPING SPECIFICATION : CS-35745-001
 5. RECOMMENDED LENGTH OF WIRE STRIP IS 4.0~4.8mm
 6. APPLICABLE WIRE SIZE : AWG #20+#20
AWG #20+#18
AWG #18+#18



REVISED EC NO: KOR2009-0151 DRWN: JHPARK01 2009/05/18 CHKD: WY. YANG 2009/06/18 APPR: YUNSIKKIM 2009/07/01	QUALITY SYMBOLS ▽=0 ∇=0	GENERAL TOLERANCES (UNLESS SPECIFIED)		DIMENSION STYLE MM ONLY	SCALE 4:1	DESIGN UNITS METRIC	THIRD ANGLE PROJECTION
			mm	INCH	DRAWN BY JS.KANG	DATE 1998/01/19	TITLE .070 MALE TERMINAL-A (LARGE)
		4 PLACES	± ---	± ---	CHECKED BY BK. CHOI	DATE 1998/01/19	
		3 PLACES	± ---	± ---	APPROVED BY CW. LEE	DATE 1998/01/19	
			2 PLACES	± 0.2	± ---		
			1 PLACE	± 0.3	± ---		
			ANGULAR ± 1 °		MATERIAL NO. 357450310	DOCUMENT NO. SD-35745-002	SHEET NO. 1 OF 01
			DRAFT WHERE APPLICABLE MUST REMAIN WITHIN DIMENSIONS		MATERIAL NO. 357450310		
			THIS DRAWING CONTAINS INFORMATION THAT IS PROPRIETARY TO MOLEX INCORPORATED AND SHOULD NOT BE USED WITHOUT WRITTEN PERMISSION				