



产品编号 : 357450410

系列号 : 35745

Product Category : Crimp Terminals

Product Description : VersaBlade Male Crimp Terminal, 24 AWG, Type A

状态 : Active

文件和资源

图纸

图纸 357450410_sd.pdf

3D 模型和设计文件

3D模型 357450410_stp.zip

规格

应用规格 351500000AS_ENG-000.pdf

应用规格 351500000AS_KOR-000.pdf

包装规格 PK-35745-001-001.pdf

产品规格 351800400-001.pdf


产品规格 351800600-001.pdf

模具规格

压接规格 CS-35745-002-001.pdf

产物环境合规

合规

GADSL/IMDS	Compliant with Exemption 44
China RoHS	
EU ELV	Not Relevant
Low-Halogen Status	Low-Halogen per IEC 61249-2-21
REACH SVHC	Not Contained per D(2023)8585-DC (23 Jan 2024)
EU RoHS	Compliant per EU 2015/863

多部分产品合规性声明

- Eu RoHS
- REACH SVHC
- Low-Halogen
- IPC 1752A Class C

- IPC 1752A Class D
- Molex Product Compliance Declaration
- IEC-62474
- chemSHERPA (xml)

欧盟 RoHS 合格证书

产品详情

常规

状态	活动
类别	Crimp Terminals
系列	35745
说明	VersaBlade Male Crimp Terminal, 24 AWG, Type A
应用	Power, Wire-to-Wire
产品系列	VersaBlade Wire-to-Wire Connector System
产品名称	VersaBlade
UPC	756054339091

物理

耐用性(插拔次数) - 最多次数	30
性别	男
材料 - 金属	Brass
材料 - 接合部位电镀	Tin
材料 - 终端电镀	Tin
净重	0.253/g
包装形式	Reel
终端界面类型	Crimp or Compression
导线绝缘直径	1.45mm max.
线径规格 (AWG)	24
线缆尺寸mm ²	0.29

进程

无铅	不适用
----	-----

可连接使用部件

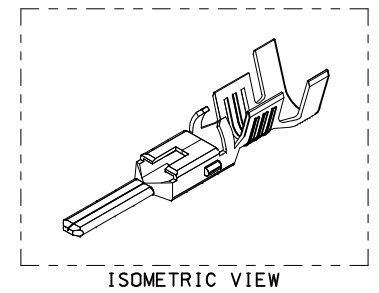
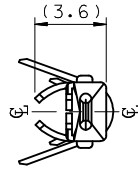
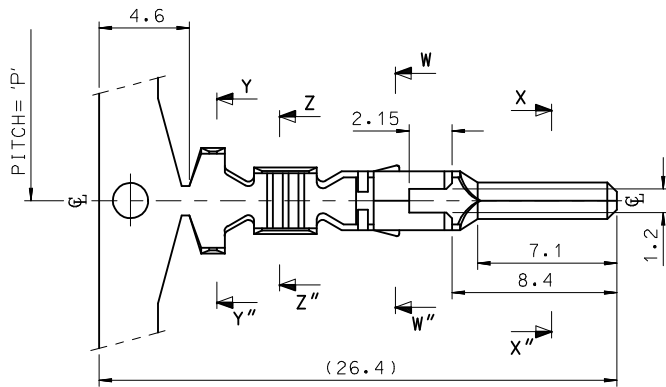
描述	产品编号
VersaBlade Hybrid Plug Housing, 3 Circuits, Positive Lock, Natural	/content/molex/molex-dot-com/cn/zh/products/product-page.html/351510310.html
VersaBlade Hybrid Plug Housing, 3 Circuits, Positive Lock, Blue	/content/molex/molex-dot-com/cn/zh/products/product-page.html/351510314.html
VersaBlade Hybrid Plug Housing, 3 Circuits, Positive Lock, Natural, Glow-Wire Capable	/content/molex/molex-dot-com/cn/zh/products/product-page.html/351510319.html
VersaBlade Hybrid Plug Housing, 4 Circuits, Positive Lock, Natural	/content/molex/molex-dot-com/cn/zh/products/product-page.html/351510410.html
VersaBlade Hybrid Plug Housing, 4 Circuits, Positive Lock, Red	/content/molex/molex-dot-com/cn/zh/products/product-page.html/351510412.html
VersaBlade Hybrid Plug Housing, 4 Circuits, Positive Lock, Blue	/content/molex/molex-dot-com/cn/zh/products/product-page.html/351510414.html
VersaBlade Hybrid Plug Housing, 4 Circuits, Positive Lock, Natural, Glow-Wire Capable	/content/molex/molex-dot-com/cn/zh/products/product-page.html/351510419.html
VersaBlade Hybrid Plug Housing, 6 Circuits, Positive Lock, Natural	/content/molex/molex-dot-com/cn/zh/products/product-page.html/351510610.html
VersaBlade Hybrid Plug Housing, 6 Circuits, Positive Lock, Blue	/content/molex/molex-dot-com/cn/zh/products/product-page.html/351510614.html
VersaBlade Hybrid Plug Housing, 6 Circuits, Positive Lock, Natural, Glow-Wire Capable	/content/molex/molex-dot-com/cn/zh/products/product-page.html/351510619.html
VersaBlade Hybrid Plug Housing, 3 Circuits, Positive Lock, Yellow, Glow-Wire Capable	/content/molex/molex-dot-com/cn/zh/products/product-page.html/351513319.html
VersaBlade Hybrid Plug Housing, 4 Circuits, Positive Lock, Yellow, Glow-Wire Capable	/content/molex/molex-dot-com/cn/zh/products/product-page.html/351513419.html
VersaBlade Hybrid Plug Housing, 6 Circuits, Positive Lock, Yellow, Glow-Wire Capable	/content/molex/molex-dot-com/cn/zh/products/product-page.html/351513619.html
VersaBlade Hybrid Plug Housing, 3 Circuits, Positive Lock, Blue, Glow-Wire Capable	/content/molex/molex-dot-com/cn/zh/products/product-page.html/351514319.html

VersaBlade Hybrid Plug Housing, 4 Circuits, Positive Lock, Blue, Glow-Wire Capable	/content/molex/molex-dot-com/cn/zh/products/product-page.html/351514419.html
VersaBlade Hybrid Plug Housing, 6 Circuits, Positive Lock, Blue, Glow-Wire Capable	/content/molex/molex-dot-com/cn/zh/products/product-page.html/351514619.html
VersaBlade Multi-Module 2-3-4 Hybrid Receptacle Housing, 9 Circuits, Full Flange Panel Mount, Natural, Glow-Wire Capable	/content/molex/molex-dot-com/cn/zh/products/product-page.html/2026500909.html
VersaBlade Multi-Module 2-2 Hybrid Receptacle Housing, without Mounting Ears, 4 Circuits, Natural, Glow-Wire Capable	/content/molex/molex-dot-com/cn/zh/products/product-page.html/2041020429.html
VersaBlade Multi-Module 4-2 Hybrid Receptacle Housing, 6 Circuits, Natural, Glow-Wire Capable	/content/molex/molex-dot-com/cn/zh/products/product-page.html/2041020609.html
VersaBlade Multi-Module Hybrid Plug Housing, 4 Circuits, Friction Lock, Natural, Glow-Wire Capable	/content/molex/molex-dot-com/cn/zh/products/product-page.html/2041020409.html
VersaBlade Multi-Module Hybrid Plug Housing, 4 Circuits, Positive Lock, Natural, Glow-Wire Capable	/content/molex/molex-dot-com/cn/zh/products/product-page.html/2041020419.html
VersaBlade Multi-Module Hybrid Plug Housing, 2 Circuits, Friction Lock, Type B, Natural	/content/molex/molex-dot-com/cn/zh/products/product-page.html/351810210.html
VersaBlade Multi-Module Hybrid Plug Housing, 2 Circuits, Friction Lock, Type B, Blue	/content/molex/molex-dot-com/cn/zh/products/product-page.html/351810214.html
VersaBlade Multi-Module Hybrid Plug Housing, 2 Circuits, Positive Lock, Type B, Natural, Glow-Wire Capable	/content/molex/molex-dot-com/cn/zh/products/product-page.html/359659210.html
VersaBlade Multi-Module Hybrid Plug Housing, 2 Circuits, Positive Lock, Type B, Yellow, Glow-Wire Capable	/content/molex/molex-dot-com/cn/zh/products/product-page.html/359659213.html
VersaBlade Hybrid Receptacles Housings and TPAs	<u>35150</u>
VersaBlade Multi-Module Hybrid Receptacle Housings	<u>35180</u>
VersaBlade Multi-Module 2-3-4 Hybrid Receptacle Housings	<u>35524</u>

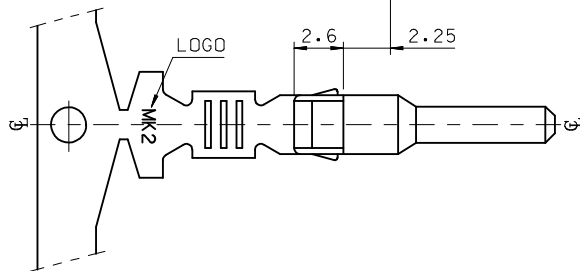
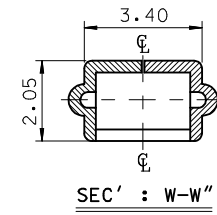
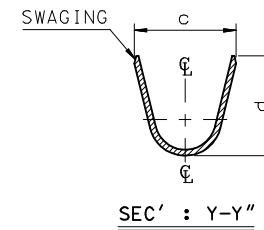
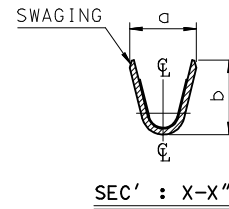
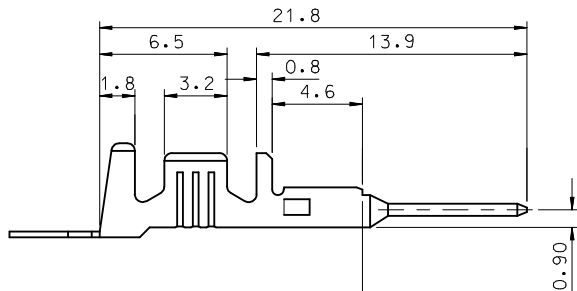
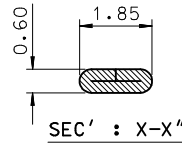
全局

描述	产品编号
Extraction and Activation Tool	<u>638132700</u>
Hand Crimp Tool for Industry Standard 1.78mm Tab Terminals, 24-26 AWG Wire	<u>638196900</u>
FineAdjust Applicator for .070 Male and Female Crimp Terminals, 24 AWG	<u>639044200</u>
T2 Terminator for .070 Female Crimp Terminal	<u>639120700</u>

This document was generated on Jun 30, 2024



- NOTES.
1. MATERIAL : Ⓢ BRASS, PRE-TIN PLATED
 2. FINISH : 0.8~1.8 μ m, Tin(Sn) plating overall
0.3~0.8 μ m, Copper(Cu) plating
 3. PRODUCT SPECIFICATION : PS-35150-001, PS-35180-002
PS-35180-003, PS-35524-001
 4. CRIMPING SPECIFICATION : CS-35745-001
 5. RECOMMENDED LENGTH OF WIRE STRIP IS 4.0~4.8mm



MATERIAL NO	ENG. No.	AWG	a	b	c	d	PITCH 'P'
357450210	35745-0210	#18-#14	3.4	3.8	5.2	4.8	12.0
357450110	35745-0110	#22-#20	2.85	2.8	4.2	4.0	10.6
357450410	35745-0410	#24	2.2	1.75	3.85	3.5	10.6

REVISED	EC NO: KOR2009-0151	2009/05/18
	TDRAWN: JHPARK01	2009/06/18
	CHKD: WY. YANG	2009/07/01
	APPR: YUNSIKKIM	2009/07/01
REV	DESCRIPTION	

	GENERAL TOLERANCES (UNLESS SPECIFIED)	
	mm	INCH
4 PLACES	± ---	± ---
3 PLACES	± ---	± ---
2 PLACES	± 0.2	± ---
1 PLACE	± 0.3	± ---
ANGULAR ± 1°		
DRAFT WHERE APPLICABLE MUST REMAIN WITHIN DIMENSIONS		

DIMENSION STYLE	
MM ONLY	
DRAWN BY	DATE
JS.KANG	1998/01/19
CHECKED BY	DATE
BK.CHOI	1998/01/19
APPROVED BY	DATE
CW.LEE	1998/01/19
MATERIAL NO.	
SEE TABLE	

SCALE	DESIGN UNITS	THIRD ANGLE PROJECTION
4:1	METRIC	
TITLE		
.070 MALE TERMINAL (A-TYPE)		
MOLEX INCORPORATED		SHEET NO.
DOCUMENT NO.		1 OF 01
SD-35745-001		