



产品编号 : 39000278

系列号 : 1560

Product Category : Crimp Terminals

Product Description : 1.57mm Diameter, Standard .062" Pin and Socket Crimp Terminal, Series 1560, Male, with Tin (Sn) Plated Brass Contact, 18-24 AWG, Reel

状态 : Active

工程编号 : 1560T

文件和资源

图纸

图纸 039000278_sd.pdf

包装设计图 15600000-PK-000.pdf

包装设计图 SPK-1560-001-001.pdf

包装设计图 SPK-1560-001-002.pdf

包装设计图 SPK-1560-001-003.pdf

规格

产品规格 PS-1625-010-001.pdf

测试摘要 15600000-TS-000.pdf


模具规格

压接规格 CS-1560_1561-001.pdf

压接规格 CS-1560_1561-002.pdf

产物环境合规

合规

GADSL/IMDS	Compliant with Exemption 44
China RoHS	
EU ELV	Not Relevant
Low-Halogen Status	Low-Halogen per IEC 61249-2-21
REACH SVHC	Not Contained per D(2023)8585-DC (23 Jan 2024)
EU RoHS	Compliant per EU 2015/863

多部分产品合规性声明

- Eu RoHS
- REACH SVHC
- Low-Halogen

- IPC 1752A Class C
- IPC 1752A Class D
- Molex Product Compliance Declaration
- IEC-62474
- chemSHERPA (xml)

欧盟 RoHS 合格证书

产品详情

常规

状态	活动
类别	Crimp Terminals
系列	1560
说明	1.57mm Diameter, Standard .062" Pin and Socket Crimp Terminal, Series 1560, Male, with Tin (Sn) Plated Brass Contact, 18-24 AWG, Reel
应用	Power, Wire-to-Wire
产品系列	Standard .062"+ and Standard .062" Pin and Socket Connector Systems
产品名称	Standard .062"
UPC	800753330252

物理

性别	男
材料 - 金属	Brass
材料 - 接合部位电镀	Tin
材料 - 终端电镀	Tin
净重	123.700/mg
包装形式	Reel
最薄镀层 - 接合部位	0.889µm
最薄镀层 - 端接	0.889µm
终端界面类型	Crimp or Compression
导线绝缘直径	1.50-3.10mm
线径规格 (AWG)	18, 20, 22, 24
线缆尺寸mm ²	不适用

施工工具

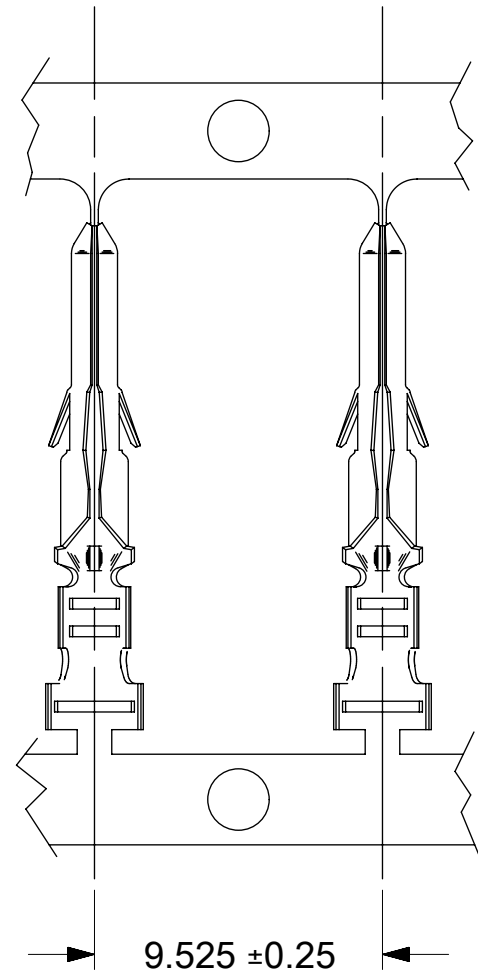
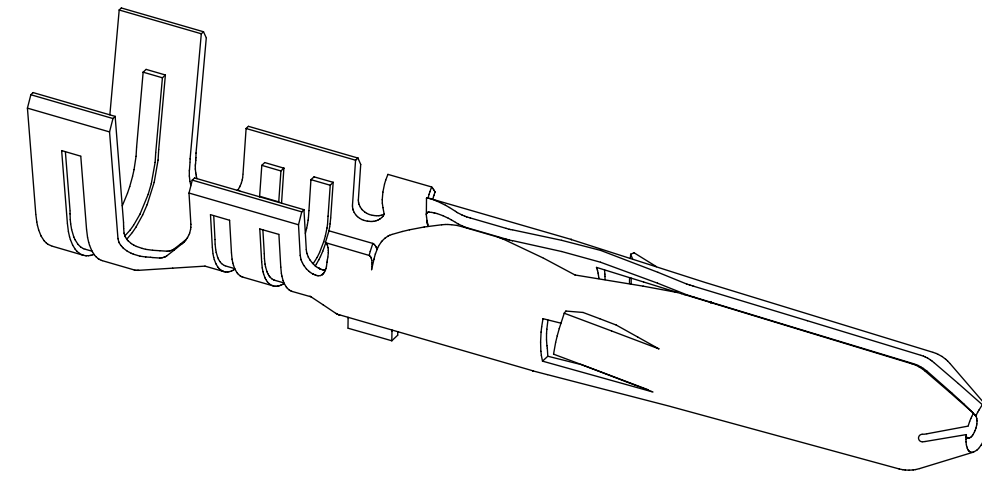
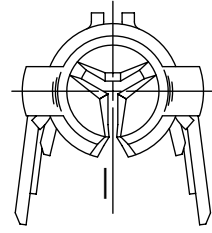
全局

描述	产品编号
Insertion Tool for Standard .062" Diameter Male and Female Terminals	<u>11020001</u>
Extraction Tool for Standard .062" and Standard .062"+ Pin and Socket Terminals	<u>11030002</u>
Hand Crimp Tool for Standard 1.57mm Pin and Socket Crimp Terminals, 18-24 AWG	<u>638191300</u>
Mini-Mac Applicator for Standard .062" Pin and Socket Terminals, for 18-24 AWG Wire with Insulation Diameter 1.52-3.05mm	<u>638914000</u>

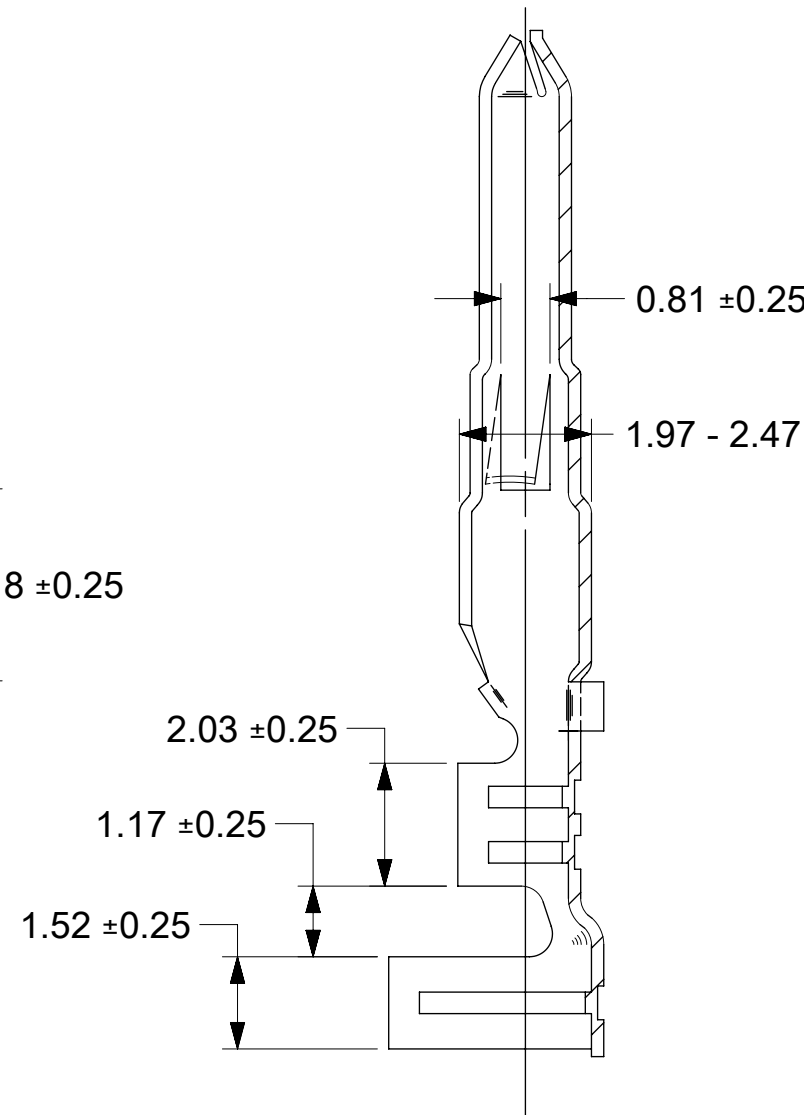
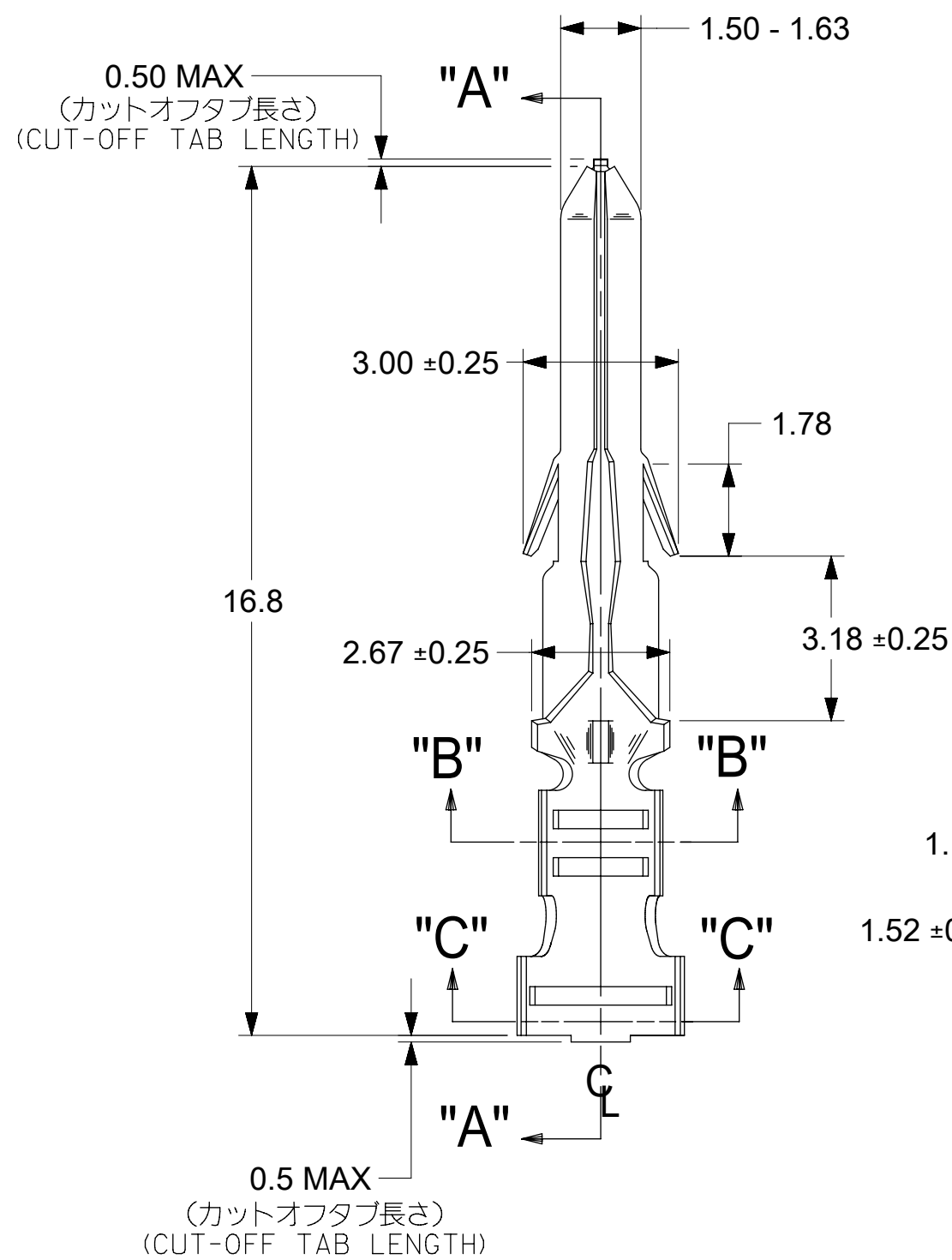
施工工具

日本

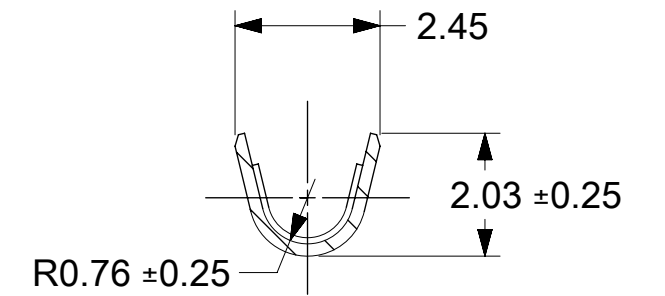
描述	产品编号
Hand Extraction Tool	<u>11267034</u>



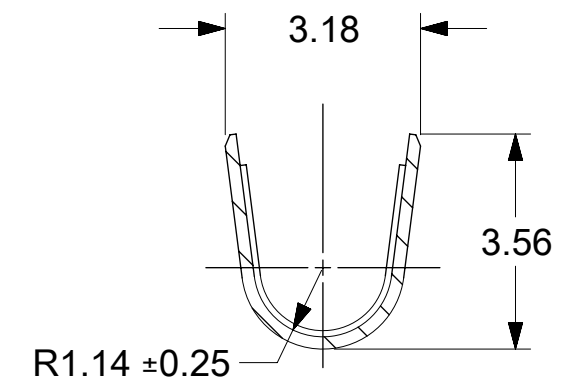
CHAIN FORM
SCALE: 4:1



SECT. "A-A"



SECT. "B-B"



SECT. "C-C"

注記 NOTES:

一般公差 : ±0.4
GENERAL TOLERANCES: ±0.4

1. MATERIAL: BRASS
2. FINISH: SEE CHART
3. PRODUCT SPECIFICATION: PS-02-06
4. PACKAGING INFORMATION: 15600000-PK
5. TERMINAL FOR USE WITH (1.57)/.062 DIA. SERIES HOUSINGS AND WILL ACCEPT 18 THRU 24 AWG WIRE WITH 1.5/3.1 INSULATION DIA.
6. PARTS CONFORM TO CLASS B REQUIREMENTS OF COSMETIC SPECIFICATION PS-45499-002.

銅 (0.5 μm MIN.) 下地 錫 (0.9 μm MIN.) TIN (0.9 μm MIN.) OVER COPPER (0.5 μm MIN.)	39-00-0278	1560T	連鎖状端子 CHAIN
メッキ PLATING	EDP.NO.	ENG.NO.	形状 FORM

材料 MATERIAL 黄銅 BRASS	0.2 t
仕上げ FINISH	—
適用電線範囲 WIRE RANGE	AWG# 18-#24
被覆外径 INS. RANGE	φ 1.5~3.1

THIS DRAWING CONTAINS INFORMATION THAT IS PROPRIETARY TO MOLEX ELECTRONIC TECHNOLOGIES, LLC AND SHOULD NOT BE USED WITHOUT WRITTEN PERMISSION			
DIMENSION UNITS mm	SCALE 8:1	CURRENT REV DESC: OBSOLETE PART NUMBER AS PER PCN#509988	
GENERAL TOLERANCES (UNLESS SPECIFIED)		EC NO: 704776	
ANGULAR TOL ± °		DRWN: SUGEEB	2022/03/29
4 PLACES ±		CHK'D: GGA	2022/05/24
3 PLACES ±		APPR: GGA	2022/05/24
2 PLACES ±		INITIAL REVISION:	
1 PLACE ±		DRWN: NAKAMURAA	2008/12/16
0 PLACES ±		APPR: NUKITA	2009/01/15
DRAFT WHERE APPLICABLE MUST REMAIN WITHIN DIMENSIONS	THIRD ANGLE PROJECTION	DRAWING C-SIZE	SERIES 1560
DOCUMENT NUMBER SD-1560-001		DOC TYPE PSD	DOC PART 001
MATERIAL NUMBER SEE TABLE		CUSTOMER GENERAL MARKET	REVISION M1
SHEET NUMBER 1 OF 1			

molex

0.62 DIA CRIMP MALE TERM

PRODUCT CUSTOMER DRAWING