



产品编号：[39303045](#)

Product Description：Mini-Fit Jr. Header, Single Row, Right-Angle, with Snap-in Plastic Peg PCB Lock, 4 Circuits, PA Polyamide Nylon 6/6, 94V-2, Tin (Sn) Plating

系列号：5569

状态：Active

Product Category：PCB Headers and Receptacles

工程编号：5569-04A4



文件和资源

图纸

[图纸 039303045_sd.pdf](#)

3D 模型和设计文件

[3D模型 039303045_stp.zip](#)

规格

[应用规格 AS-5557-001-001.pdf](#)

[包装规格 PK-5569-002-001.pdf](#)

[产品规格 PS-45750-001-001.pdf](#)

[产品规格 PS-5556-001-001.pdf](#)

[测试摘要 TS-5556-002-001.pdf](#)

产物环境合规

合规

| | |
|--------------------|--|
| GADSL/IMDS | Not Relevant |
| China RoHS | |
| EU ELV | Not Relevant |
| Low-Halogen Status | Low-Halogen per IEC 61249-2-21 |
| REACH SVHC | Not Contained per D(2023)3788-DC (14 Jun 2023) |
| EU RoHS | Compliant per EU 2015/863 |

[多部分产品合规性声明](#)

| CKT SIZE | DIM A | DIM B | DIM C | DIM D |
|----------|------------------|------------------|------------------|------------------|
| 2 | .165 (4.20) | .378 (9.60) | .520 (13.20) | .772 (19.60) |
| 4 | .496 (12.60) | .709 (18.00) | .850 (21.60) | 1.102 (28.00) |
| 5 | .661 (16.80) | .874 (22.20) | 1.016 (25.80) | 1.268 (32.20) |
| 6 | .827 (21.00) | 1.039 (26.40) | 1.181 (30.00) | 1.433 (36.40) |
| 7 | .992 (25.20) | 1.205 (30.60) | 1.346 (34.20) | 1.598 (40.60) |
| 8 | 1.157 (29.40) | 1.370 (34.80) | 1.512 (38.40) | 1.764 (44.80) |
| 9 | 1.323 (33.60) | 1.535 (39.00) | 1.677 (42.60) | 1.929 (49.00) |
| 10 | 1.488 (37.80) | 1.701 (43.20) | 1.843 (46.80) | 2.094 (53.20) |
| 11 | 1.654 (42.00) | 1.866 (47.40) | 2.008 (51.00) | 2.260 (57.40) |
| 12 | 1.819 (46.20) | 2.031 (51.60) | 2.173 (55.20) | 2.425 (61.60) |

NOTES:

1) HOUSING MATERIAL:

"BLANK" = NYLON 6/6, U.L. 94V-2, COLOR: NATURAL.
 210 = NYLON 6/6, U.L. 94V-0, COLOR: NATURAL.
 BL = NYLON 6/6, U.L. 94V-2, COLOR: BLACK.
 400 = NYLON 6/6, U.L. 94V-O. COLOR: BLACK.
 TERMINAL MATERIAL: BRASS, ALLOY.

2) TERMINAL PLATING:

G, GS - .000030/(.00076) MIN. SELECT GOLD AND
 .000100/(.00127) MIN. SELECT MATTE TIN OVER
 .000050/(.00127) MIN NICKEL OVERALL.

G2, GS2 - .00015/(.00038) MIN. SELECT GOLD AND
 .000100/(.00254) MIN. SELECT MATTE TIN OVER
 .000050/(.00127) MIN. NICKEL OVERALL.

RM - .000060/(.00152) MIN REFLOWED MATTE TIN
 OVER .000050/(.00127) MIN. NICKEL OVERALL.

BLANK, S, MS - .000100/(.00254) MIN. MATTE TIN OVER
 .000050/(.00127) MIN. NICKEL OVERALL.

3) PRODUCT SPECIFICATION: PS-5556-001

4) PACKAGING SPECIFICATION : BULK PACK PER PK-5569-002
 TRAY PACK PER PK-5569-005

5) PART MATES WITH MOLEX RECEPTACLE #5557.

6) PART IS DESIGNED FOR USE WITH #4 OR M3 SELF TAPPING SCREWS.

7) DISCOLORATION IN THE BANDOLIER CARRIER AREA OF THE PIN IS INHERENT TO THE PLATING PROCESS AND IS DUE TO THE MASKING EFFECT OF THE CARRIER. THIS DISCOLORATION IS IN A NON-FUNCTIONAL AREA OF THE PIN AND WILL NOT AFFECT THE PERFORMANCE OF THE HEADER ASSEMBLY.

8) CONNECTORS ARE NOT TO BE MATED OR UNMATED WHILE CIRCUIT ARE LIVE.

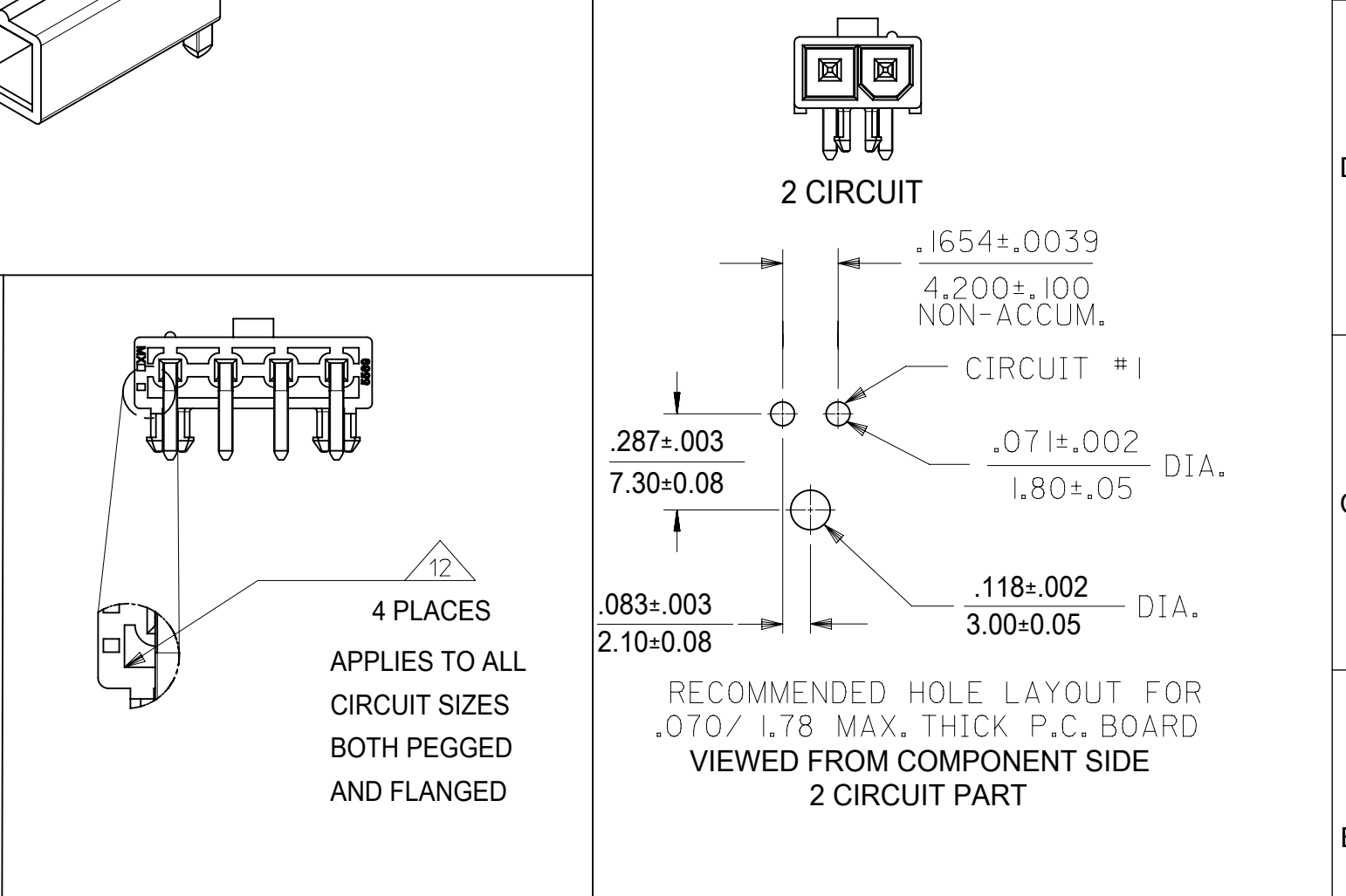
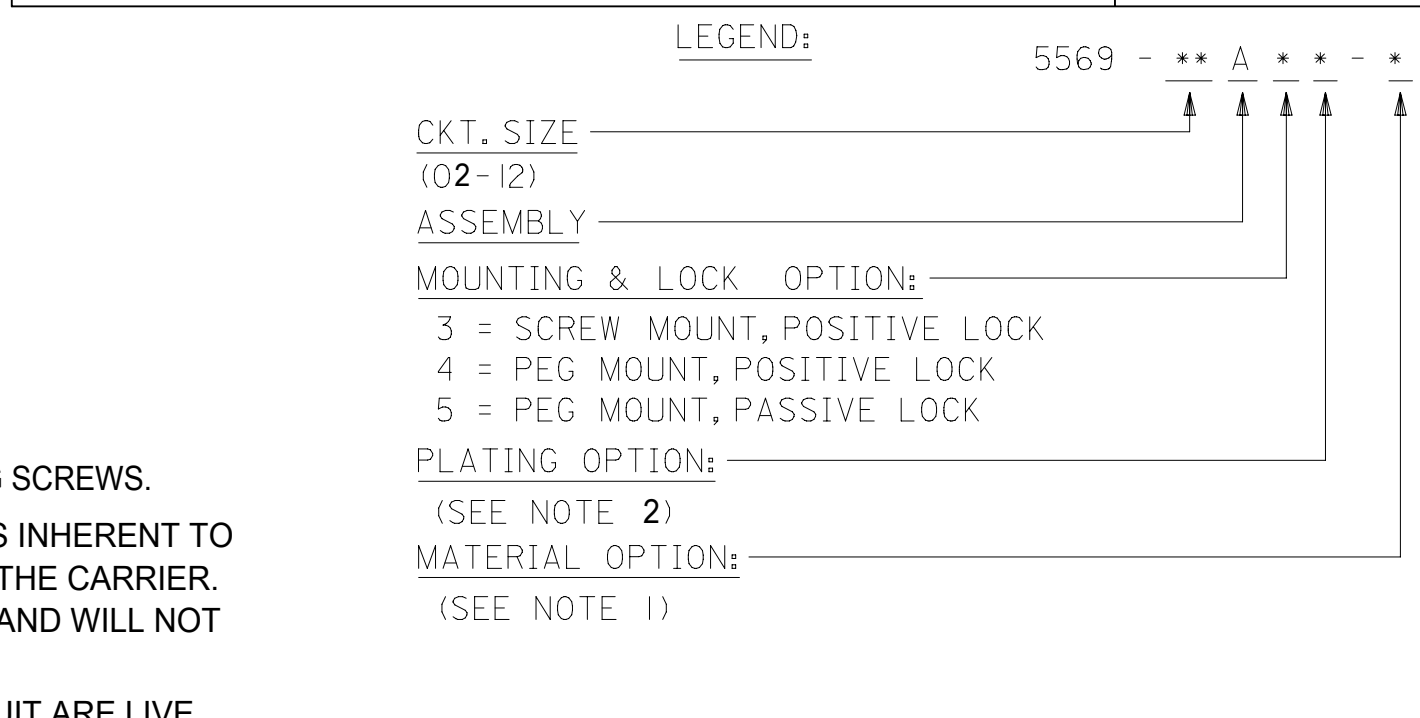
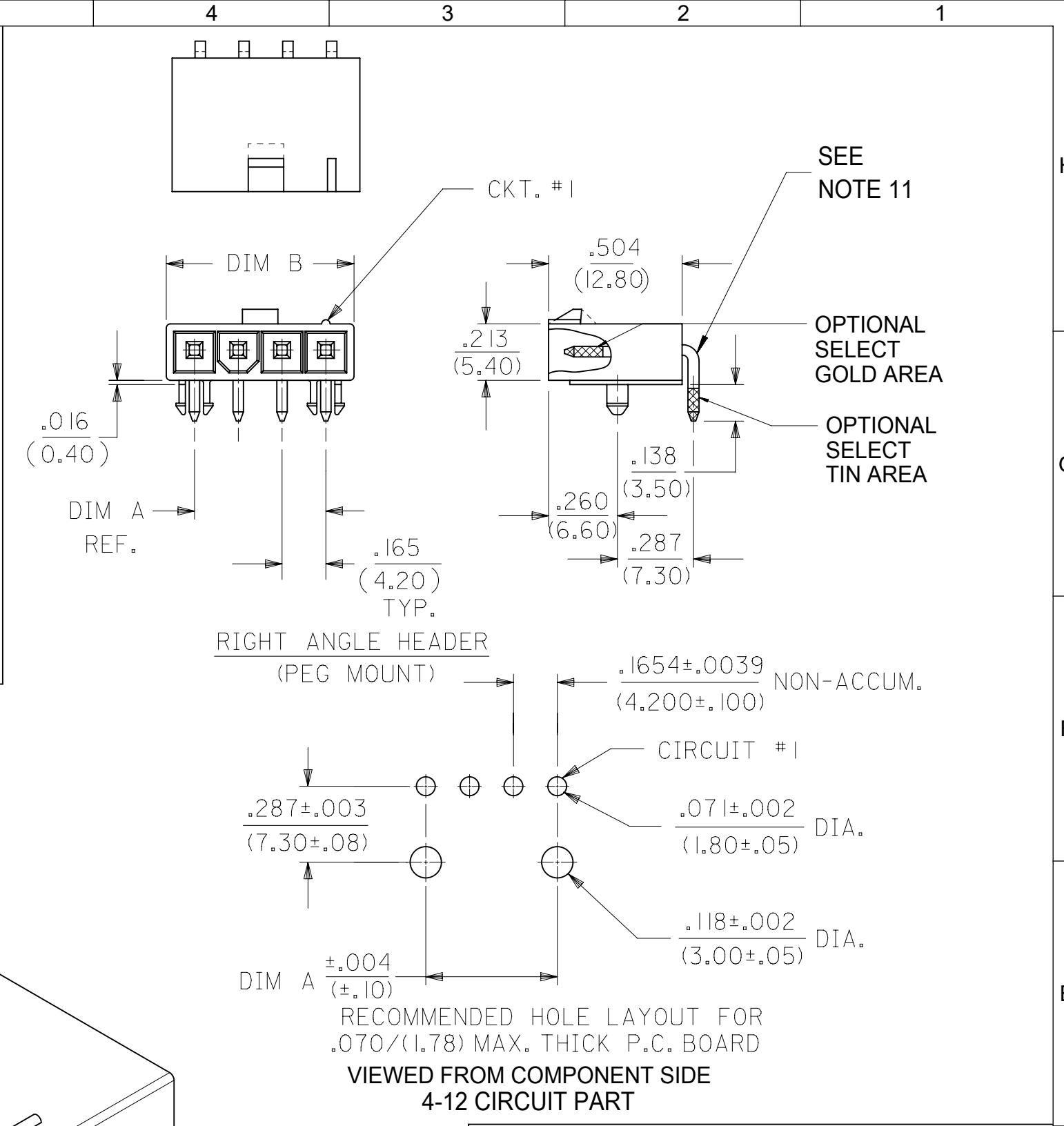
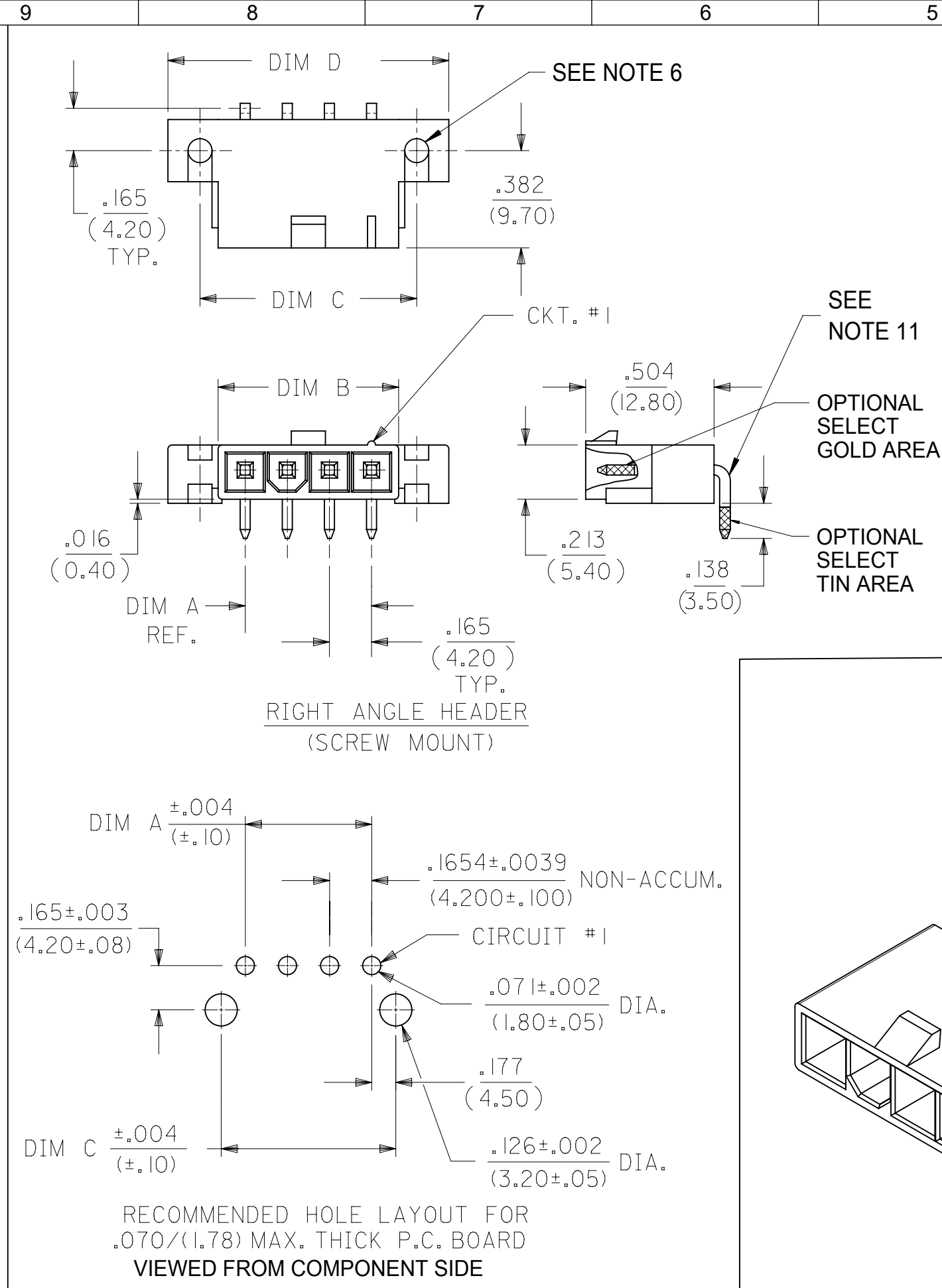
9) PARTS NOT DESIGNED FOR CURRENT SHARING.

10) PART CONFORMS TO CLASS "B" REQUIREMENTS OF COSMETIC SPECIFICATION PS-45499-002.

11) FORMING MARKS ON PINS ARE ACCEPTABLE

12) CORNER CORE-OUTS ARE OPTIONAL AND MAY OR MAY NOT BE PRESENT.

13) TEXT ON PART IS FOR REFERENCE ONLY. TEXT AND TEXT LOCATION MAY VARY DEPENDING ON PART NUMBER AND/OR TOOL.



| | | | | | | | | | |
|---|---------|------------------------|--|---------------------------|--|--------|--|-----------------|--|
| THIS DRAWING CONTAINS INFORMATION THAT IS PROPRIETARY TO MOLEX ELECTRONIC TECHNOLOGIES, LLC AND SHOULD NOT BE USED WITHOUT WRITTEN PERMISSION | | | | | | | | | |
| DIMENSION UNITS | | SCALE | | CURRENT REV DESC: | | | | | |
| IN/MM | | NTS | | | | | | | |
| GENERAL TOLERANCES (UNLESS SPECIFIED) | | | | | | | | | |
| | MM | INCH | | | | | | | |
| 4 PLACES | ± | ± | | EC NO: 728634 | | | | | |
| 3 PLACES | ± | ± 0.015 | | DRWN: JERRYW8 2022/11/15 | | | | | |
| 2 PLACES | ± 0.38 | ± | | CHK'D: XQZHANG 2022/11/16 | | | | | |
| 1 PLACE | ± | ± | | APPR: XQZHANG 2022/11/16 | | | | | |
| 0 PLACES | ± | ± | | INITIAL REVISION: | | | | | |
| ANGULAR TOL | ± 3.0 ° | | | DRWN: KSS 2/14/89 | | | | | |
| DRAFT WHERE APPLICABLE MUST REMAIN WITHIN DIMENSIONS | | THIRD ANGLE PROJECTION | | DRAWING | | SERIES | | MATERIAL NUMBER | |
| | | | | C-SIZE | | 5569 | | SEE CHARTS | |

molex

RIGHT ANGLE HEADER ASSY (SINGLE ROW) (MINI-FIT JR. SERIES)

PRODUCT CUSTOMER DRAWING

DOCUMENT NUMBER: 55690004-SD

DOC TYPE: PSD

DOC PART: 000

REVISION: A2

CUSTOMER: GENERAL MARKET

SHEET NUMBER: 1 OF 2

| UL94V-2 | | | | | | | |
|----------------------------------|--------------|-----------|-----------------|-------------|----------------------|---------------------|------------------|
| E.D.P. NO. | ENG. NO. | CKT. SIZE | MOUNTING OPTION | LOCK OPTION | PLATING (SEE NOTE 2) | MAT'L. (SEE NOTE 1) | PACKAGING OPTION |
| SCREW MOUNT POSITIVE LOCK | | | | | | | |
| 39-30-3041 | 5569-04A3MS | 4 | SCREWS | POSITIVE | TIN/NICKEL | 94V-2 | BULK |
| 39-30-3051 | 5569-05A3MS | 5 | SCREWS | POSITIVE | TIN/NICKEL | 94V-2 | BULK |
| 39-30-3043 | 5569-04A3GS | 4 | SCREWS | POSITIVE | 30 GOLD | 94V-2 | BULK |
| 39-30-3053 | 5569-05A3GS | 5 | SCREWS | POSITIVE | 30 GOLD | 94V-2 | BULK |
| PEG MOUNT POSITIVE LOCK | | | | | | | |
| 39-30-3045 | 5569-04A4 | 4 | PEGS | POSITIVE | TIN/NICKEL | 94V-2 | BULK |
| 39-30-3055 | 5569-05A4 | 5 | PEGS | POSITIVE | TIN/NICKEL | 94V-2 | BULK |
| 46999-0709 | 5569-02A4G | 2 | PEGS | POSITIVE | 30 GOLD | 94V-2 | TRAY |
| 39-30-3047 | 5569-04A4G | 4 | PEGS | POSITIVE | 30 GOLD | 94V-2 | BULK |
| 39-30-3057 | 5569-05A4G | 5 | PEGS | POSITIVE | 30 GOLD | 94V-2 | BULK |
| 46999-0710 | 5569-06A4G | 6 | PEGS | POSITIVE | 30 GOLD | 94V-2 | TRAY |
| 46999-0713 | 5569-02A4MS | 2 | PEGS | POSITIVE | TIN/NICKEL | 94V-2 | TRAY |
| 46999-0100 | 5569-05A4MS | 5 | PEGS | POSITIVE | TIN/NICKEL | 94V-2 | BULK |
| 46999-0714 | 5569-06A4MS | 6 | PEGS | POSITIVE | TIN/NICKEL | 94V-2 | TRAY |
| 46999-0098 | 5569-05A4RM | 5 | PEGS | POSITIVE | REFLOW/NICKEL | 94V-2 | BULK |
| PEG MOUNT, PASSIVE LOCK | | | | | | | |
| NO E.D.P. | 5569-04A5MS | 4 | PEGS | PASSIVE | TIN/NICKEL | 94V-2 | BULK |
| 15-24-1501 | 5569-05A5MS | 5 | PEGS | PASSIVE | TIN/NICKEL | 94V-2 | BULK |
| NO E.D.P. | 5569-04A5GS2 | 4 | PEGS | PASSIVE | 15 GOLD | 94V-2 | BULK |
| 15-27-1501 | 5569-05A5GS2 | 5 | PEGS | PASSIVE | 15 GOLD | 94V-2 | BULK |

| UL94V-0 | | | | | | | |
|----------------------------------|-------------------|-----------|-----------------|-------------|----------------------|---------------------|------------------|
| E.D.P. NO. | ENG. NO. | CKT. SIZE | MOUNTING OPTION | LOCK OPTION | PLATING (SEE NOTE 2) | MAT'L. (SEE NOTE 1) | PACKAGING OPTION |
| SCREW MOUNT POSITIVE LOCK | | | | | | | |
| 50-30-4469 | 5569-04A3MS-210 | 4 | SCREW | POSITIVE | TIN/NICKEL | 94V-0 | BULK |
| NO E.D.P. | 5569-05A3MS-210 | 5 | SCREW | POSITIVE | TIN/NICKEL | 94V-0 | BULK |
| NO E.D.P. | 5569-04A3GS-210 | 4 | SCREW | POSITIVE | 30 GOLD | 94V-0 | BULK |
| NO E.D.P. | 5569-05A3GS-210 | 5 | SCREW | POSITIVE | 30 GOLD | 94V-0 | BULK |
| PEG MOUNT POSITIVE LOCK | | | | | | | |
| 46999-0703 | 5569-02A4MS-210 | 2 | PEGS | POSITIVE | TIN/NICKEL | 94V-0 | TRAY |
| 39-30-3046 | 5569-04A4MS-210 | 4 | PEGS | POSITIVE | TIN/NICKEL | 94V-0 | BULK |
| 39-30-3056 | 5569-05A4MS-210 | 5 | PEGS | POSITIVE | TIN/NICKEL | 94V-0 | BULK |
| 39-30-3054 | 5569-05A4MS-210-T | 5 | PEGS | POSITIVE | TIN/NICKEL | 94V-0 | TRAY |
| 46999-0704 | 5569-06A4MS-210 | 6 | PEGS | POSITIVE | TIN/NICKEL | 94V-0 | TRAY |
| 46999-0711 | 5569-02A4G-210 | 2 | PEGS | POSITIVE | 30 GOLD | 94V-0 | TRAY |
| 39-30-3048 | 5569-04A4G-210 | 4 | PEGS | POSITIVE | 30 GOLD | 94V-0 | BULK |
| 39-30-3058 | 5569-05A4G-210 | 5 | PEGS | POSITIVE | 30 GOLD | 94V-0 | BULK |
| 46999-0712 | 5569-06A4G-210 | 6 | PEGS | POSITIVE | 30 GOLD | 94V-0 | TRAY |
| 46999-0432 | 5569-04A4GS-400 | 4 | PEGS | POSITIVE | 30 GOLD | 94V-0 | BULK |
| 50-30-4436 | 5569-05A4GS-400 | 5 | PEGS | POSITIVE | 30 GOLD | 94V-0 | BULK |
| 46999-0707 | 5569-02A4MS-400 | 2 | PEGS | POSITIVE | TIN/NICKEL | 94V-0 | TRAY |
| 46999-0288 | 5569-04A4MS-400 | 4 | PEGS | POSITIVE | TIN/NICKEL | 94V-0 | BULK |
| 46999-0289 | 5569-05A4MS-400 | 5 | PEGS | POSITIVE | TIN/NICKEL | 94V-0 | BULK |
| 46999-0708 | 5569-06A4MS-400 | 6 | PEGS | POSITIVE | TIN/NICKEL | 94V-0 | TRAY |

| | | | | | | | | | | | | | | | |
|---|--|-------|--------------|---------------------------|------------|-------------------|--|---|--|-------------------------------|--|----------------------------|--|------------------------|--|
| THIS DRAWING CONTAINS INFORMATION THAT IS PROPRIETARY TO MOLEX ELECTRONIC TECHNOLOGIES, LLC AND SHOULD NOT BE USED WITHOUT WRITTEN PERMISSION | | | | | | | | | | | | | | | |
| DIMENSION UNITS | | SCALE | | CURRENT REV DESC: | | | | molex | | | | | | | |
| IN/MM | | NTS | | | | | | | | | | | | | |
| GENERAL TOLERANCES (UNLESS SPECIFIED) | | | | EC NO: 728634 | | | | RIGHT ANGLE HEADER ASSY (SINGLE ROW) (MINI-FIT JR. SERIES) | | | | | | | |
| | | | | DRWN: JERRYW8 2022/11/15 | | | | | | | | | | | |
| 4 PLACES ± | | | | CHK'D: XQZHANG 2022/11/16 | | | | PRODUCT CUSTOMER DRAWING | | | | | | | |
| 3 PLACES ± 0.015 | | | | APPR: XQZHANG 2022/11/16 | | | | | | | | | | | |
| 2 PLACES ± 0.38 | | | | INITIAL REVISION: | | | | DOCUMENT NUMBER 55690004-SD | | | | | | | |
| 1 PLACE ± | | | | DRWN: KSS 2/14/89 | | | | | | | | | | | |
| 0 PLACES ± | | | | APPR: RAS 2/14/89 | | | | DOC TYPE PSD | | DOC PART 000 | | REVISION A2 | | | |
| ANGULAR TOL ± 3.0 ° | | | | THIRD ANGLE PROJECTION | | DRAWING C-SIZE | | SERIES 5569 | | MATERIAL NUMBER SEE CHARTS | | CUSTOMER GENERAL MARKET | | SHEET NUMBER 2 OF 2 | |
| DRAFT WHERE APPLICABLE MUST REMAIN WITHIN DIMENSIONS | | | | | | | | | | | | | | | |
| DOCUMENT STATUS | | P1 | RELEASE DATE | | 2022/11/16 | 09:25:17 | | | | | | | | | |

- Eu RoHS
- REACH SVHC
- Low-Halogen

多部分行业合规性文件

- IPC 1752A Class C
- IPC 1752A Class D
- Molex Product Compliance Declaration
- IEC-62474
- chemSHERPA (xml)

欧盟 RoHS 合格证书

产品详情

常规

| | |
|------|--|
| 状态 | 活动 |
| 类别 | PCB Headers and Receptacles |
| 系列 | 5569 |
| 说明 | Mini-Fit Jr. Header, Single Row, Right-Angle, with Snap-in Plastic Peg PCB Lock, 4 Circuits, PA Polyamide Nylon 6/6, 94V-2, Tin (Sn) Plating |
| 应用 | Power, Wire-to-Board |
| 个评论 | Current = 13A max. per circuit when header is mated to a receptacle loaded with 45750 Mini-Fit Plus HCS Crimp Terminal Crimped to 16 AWG wire. See Molex Product specification PS-5556-001 for additional current de-rating information. |
| 元件类型 | PCB Header |
| 产品系列 | Mini-Fit Family Power Connectors |
| 产品名称 | Mini-Fit Jr. |
| UPC | 800753617308 |

机构

| | |
|-----|---------|
| CSA | LR19980 |
| UL | E29179 |

电气

| | |
|---------|-------|
| 每触点最大电流 | 13.0A |
|---------|-------|

| | |
|---------|------|
| 电压 - 最大 | 600V |
|---------|------|

物理

| | |
|------------------|-----------------|
| 断开 | 否 |
| 回路数 (已载入) | 4 |
| 电路数 (最多) | 4 |
| 颜色-树脂 | Natural |
| 耐用性(插拔次数) - 最多次数 | 30 |
| 先接后断 | 否 |
| 阻燃性 | 94V-2 |
| 符合灼热丝规范 | 否 |
| 可配插产品指南 | 否 |
| 插接极性 | 无 |
| 锁定插接部位 | 是 |
| 材料 - 金属 | Brass |
| 材料 - 接合部位电镀 | Matte Tin |
| 材料 - 终端电镀 | Matte Tin |
| 材料 - 树脂 | Nylon |
| 净重 | 1.474/g |
| 行数 | 1 |
| 方向 | Right Angle |
| 包装形式 | Bag |
| PCB 定位器 | 是 |
| PCB 保持力 | 是 |
| 推荐的 PCB 厚度 | 1.78mm |
| 间距 - 插配接口 | 4.20mm |
| 间距 - 终端界面 | 4.20mm |
| 最薄镀层 - 接合部位 | 2.540µm |
| 最薄镀层 - 端接 | 2.540µm |
| 有极性的插配件 | 是 |
| PCB 极性 | 是 |
| 有护墙的 | Fully |
| 可堆叠的 | 否 |
| 运行温度范围 | -40° to +105° C |
| 终端界面类型 | Through Hole |

进程

| | |
|--------|------|
| 最长持续时间 | 5 |
| 无铅 | WAVE |
| 最大周期 | 1 |
| 最高温度 | 240 |

可配插/可连接使用的产品

可配插部件

| 描述 | 产品编号 |
|--|-------------------|
| Mini-Fit Jr. Receptacle Housing, Single Row, 4 Circuits, UL 94V-2, Natural | <u>0039014040</u> |
| Mini-Fit TPA2 and Mini-Fit Sigma Dual Row Receptacle Housings | <u>172708</u> |
| Mini-Fit TPA2-to-Mini-Fit TPA2 Off-the-Shelf (OTS) Cable Assemblies | <u>45135</u> |
| Mini-Fit TPA2-to-Mini-Fit TPA2 Off-the-Shelf (OTS) Cable Assemblies | <u>145135</u> |