

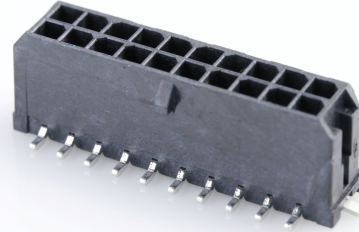
产品编号 : [430452018](#)

Product Description : Micro-Fit 3.0 Vertical Header, 3.00mm Pitch, Dual Row, 20 Circuits, with Solder Tab, Tin, Glow-Wire Capable, Black, Tape and Reel

系列号 : 43045

状态 : Active

Product Category : PCB Headers and Receptacles



文件和资源

图纸

[图纸 430452018_sd.pdf](#)

[包装设计图 430450002-PK-000.pdf](#)

3D 模型和设计文件

[3D模型 430452018_stp.zip](#)

[符号足迹数据 SYM-43045-2018-001.zip](#)

规格

[产品规格 430450001-PS-K0-000.pdf](#)

[产品规格 430450001-PS-SP-000.pdf](#)

[产品规格 PS-43045-001.pdf](#)


[测试摘要 430450004-TS-000.pdf](#)

[测试摘要 TS-43045-001-001.pdf](#)

[测试摘要 TS-46235-001-001.pdf](#)

产物环境合规

合规

| | |
|--------------------|---|
| GADSL/IMDS | Not Relevant |
| China RoHS |  |
| EU ELV | Not Relevant |
| Low-Halogen Status | Low-Halogen per IEC 61249-2-21 |
| REACH SVHC | Not Contained per D(2023)3788-DC (14 Jun 2023) |
| EU RoHS | Compliant per EU 2015/863 |

[多部分产品合规性声明](#)

- Eu RoHS
- REACH SVHC
- Low-Halogen

多部分行业合规性文件

- IPC 1752A Class C
- IPC 1752A Class D
- Molex Product Compliance Declaration
- IEC-62474
- chemSHERPA (xml)

欧盟 RoHS 合格证书

产品详情

常规

| | |
|----|---|
| 状态 | 活动 |
| 类别 | PCB Headers and Receptacles |
| 系列 | 43045 |
| 说明 | Micro-Fit 3.0 Vertical Header, 3.00mm Pitch, Dual Row, 20 Circuits, with Solder Tab, Tin, Glow-Wire Capable, Black, Tape and Reel |
| 应用 | Power, Wire-to-Board |

| | |
|------|--|
| 个评论 | <p>High Temperature, Square Pin, Solder Type; This Molex product is manufactured from material that has the following ratings, tested by independent agencies:</p> <p>a) A Glow Wire Ignition Temperature (GWIT) of at least 775 deg C per IEC 60695-2-13. b) A Glow Wire Flammability Index (GWFI) above 850 deg C per IEC 60695-2-12 and hence complies with the requirements set out in the International Standard IEC 60335-1 5th edition - household and similar electrical appliances - safety, section 30 Resistance to heat and fire. The customers using this product must determine its suitability for use in their particular application through testing or other acceptable means as described in end-product glow-wire flammability test standard IEC 60695-2-11 and any applicable product end-use standard(s). If it is determined during the customer's evaluation of suitability, that higher performance is required, please contact Molex for possible product options.</p> |
| 元件类型 | PCB Header |
| 产品系列 | Micro-Fit Connector System |
| 产品名称 | Micro-Fit 3.0 |
| UPC | 800754375603 |

机构

| | |
|-----|---------|
| CSA | LR19980 |
| UL | E29179 |

电气

| | |
|---------|------|
| 每触点最大电流 | 8.5A |
| 电压 - 最大 | 600V |

物理

| | |
|-----------|----|
| 断开 | 否 |
| 回路数 (已载入) | 20 |
| 电路数 (最多) | 20 |

| | |
|------------------|--------------------------------|
| 颜色-树脂 | 黑色 |
| 耐用性(插拔次数) - 最多次数 | 30 |
| 阻燃性 | 94V-0 |
| 符合灼热丝规范 | 是 |
| 插配长度 | 17.64mm |
| 材料 - 金属 | Brass |
| 材料 - 接合部位电镀 | Tin |
| 材料 - 终端电镀 | Tin |
| 材料 - 树脂 | High Temperature Thermoplastic |
| 净重 | 2.910/g |
| 行数 | 2 |
| 方向 | 垂直 |
| 包装形式 | Embossed Tape on Reel |
| PCB 定位器 | 是 |
| PCB 保持力 | 是 |
| 推荐的 PCB 厚度 | 1.60mm |
| 间距 - 插配接口 | 3.00mm |
| 最薄镀层 - 接合部位 | 0.254µm |
| PCB 极性 | 是 |
| 有护墙的 | Fully |
| 可堆叠的 | 否 |
| 运行温度范围 | -40° to +105° C |
| 终端界面类型 | Surface Mount |

进程

| | |
|--------|--------|
| 最长持续时间 | 30 |
| 无铅 | REFLOW |
| 最大周期 | 3 |
| 最高温度 | 260 |

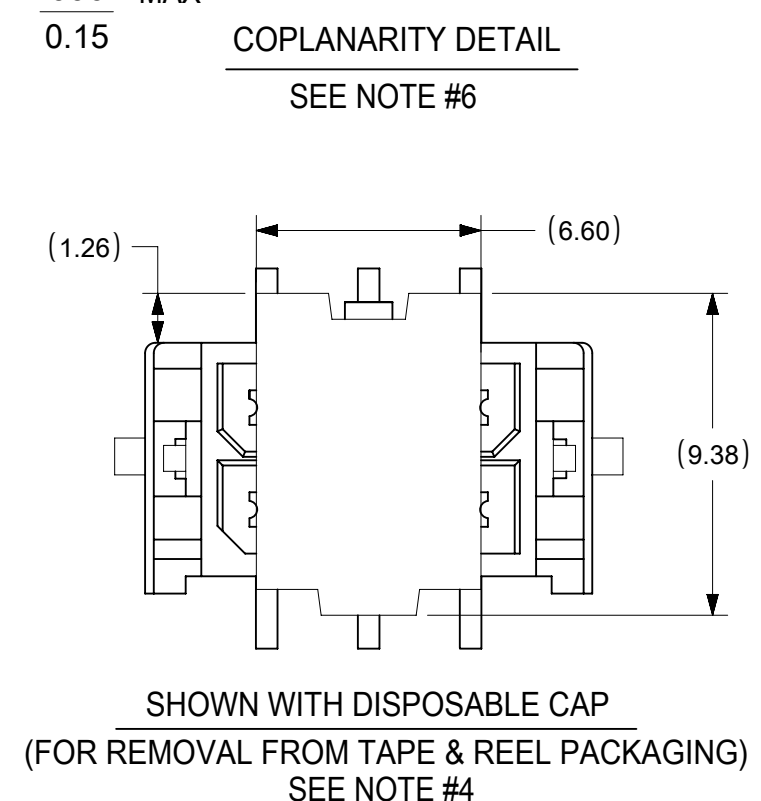
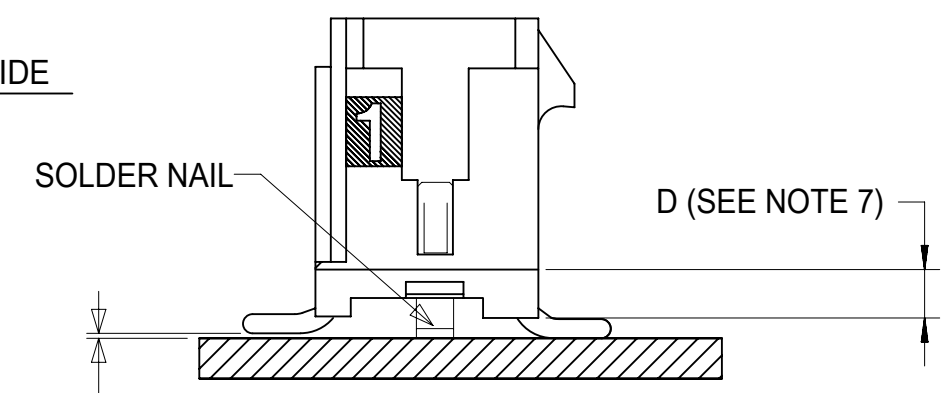
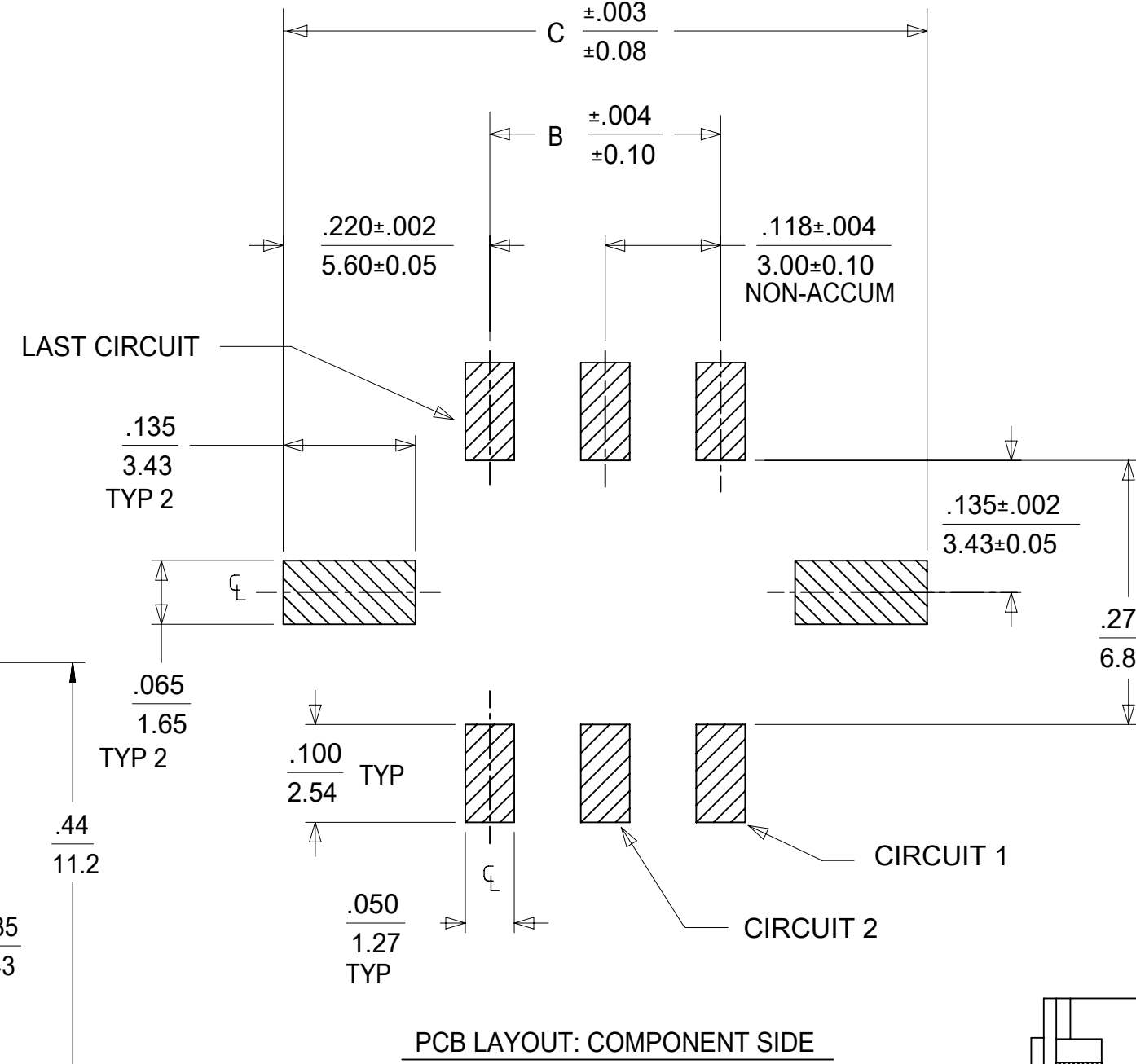
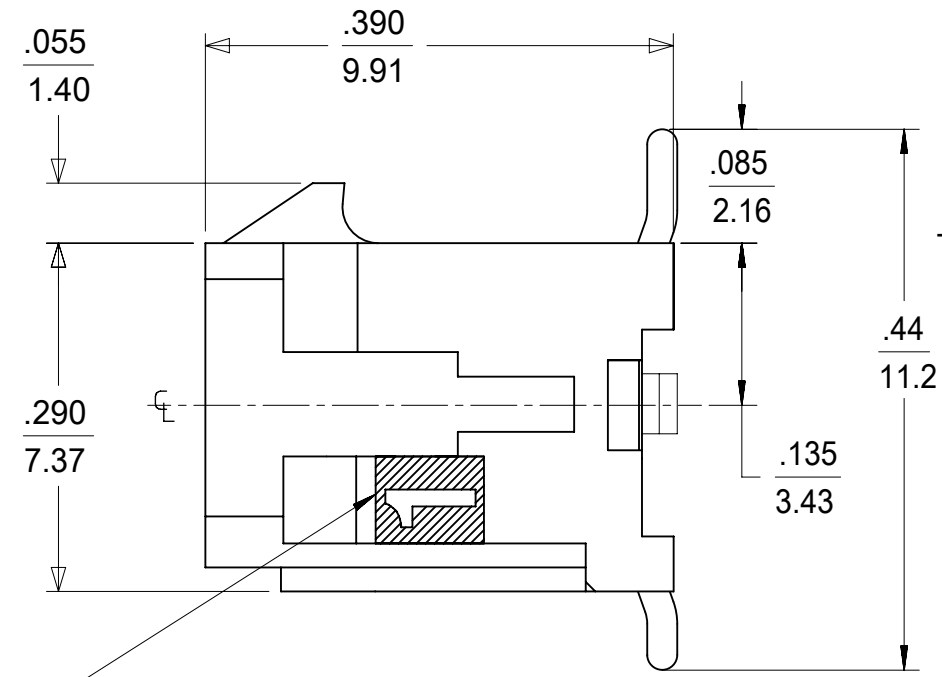
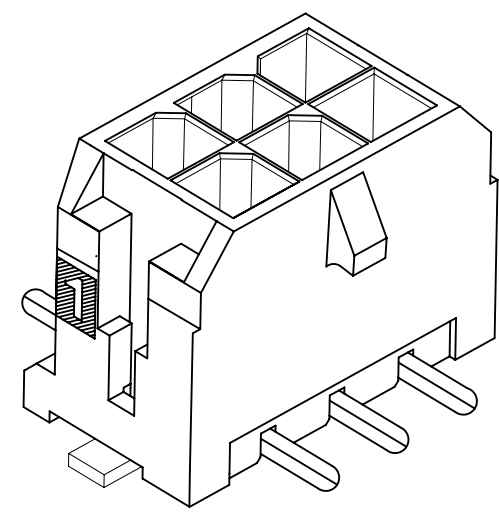
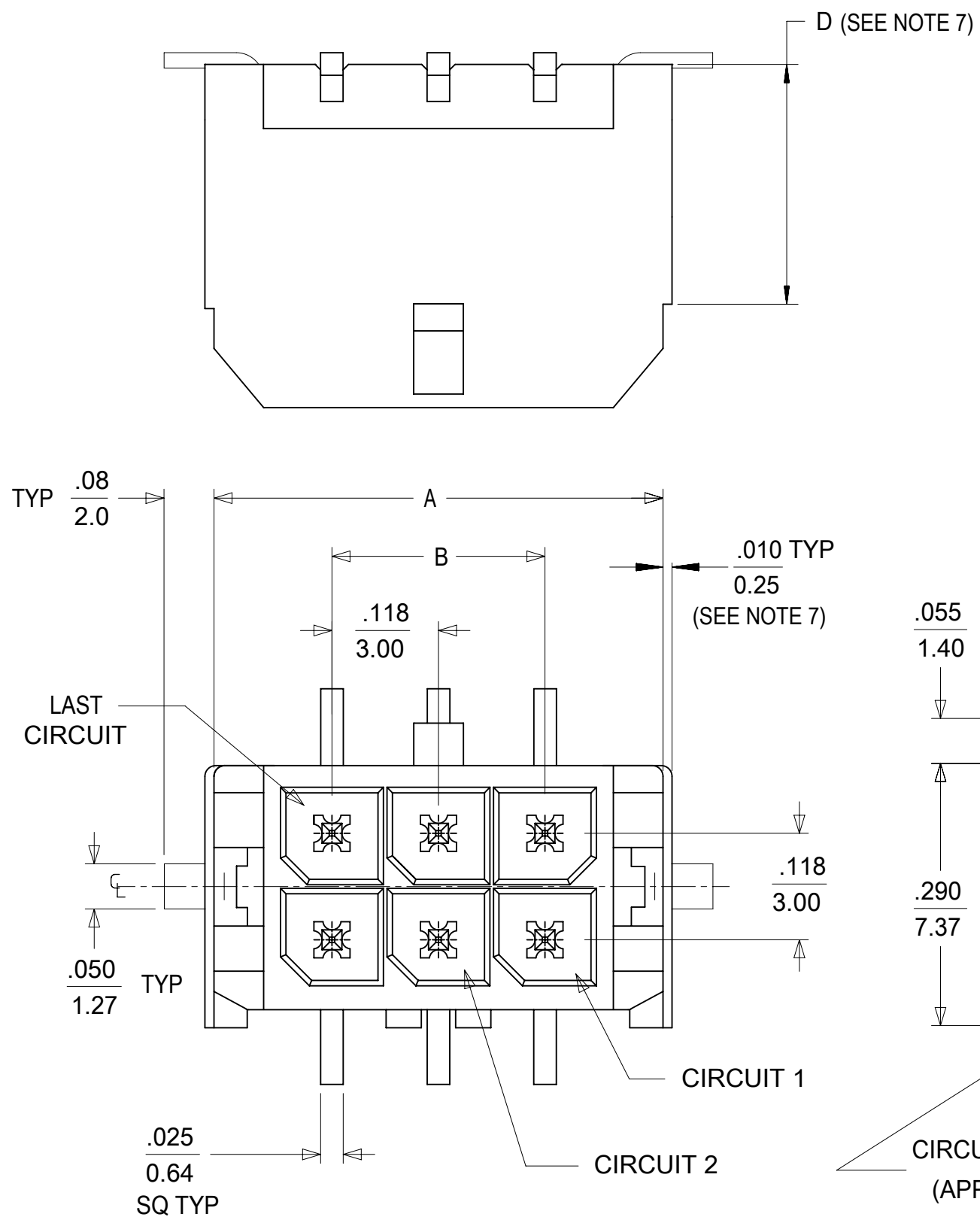
可配插/可连接使用的产品

可配插部件

| 描述 | 产品编号 |
|----|------|
|----|------|

| | |
|--|---------------|
| Micro-Fit 3.0 Dual Row Receptacle Housings | <u>43025</u> |
| Micro-Fit TPA Receptacle Housings | <u>172952</u> |

This document was generated on Dec 28, 2023



| CKTS | A | B | C |
|------|----------------|----------------|----------------|
| 02 | .262 6.65 | NA | .441 11.20 |
| 04 | .380 9.65 | .118 3.00 | .559 14.20 |
| 06 | .498 12.65 | .236 6.00 | .677 17.20 |
| 08 | .616 15.65 | .354 9.00 | .795 20.20 |
| 10 | .734 18.65 | .472 12.00 | .913 23.20 |
| 12 | .852 21.65 | .591 15.00 | 1.031 26.20 |
| 14 | .970 24.65 | .709 18.00 | 1.150 29.20 |
| 16 | 1.088 27.65 | .827 21.00 | 1.268 32.20 |
| 18 | 1.206 30.65 | .945 24.00 | 1.386 35.20 |
| 20 | 1.325 33.65 | 1.063 27.00 | 1.504 38.20 |
| 22 | 1.443 36.65 | 1.181 30.00 | 1.622 41.20 |
| 24 | 1.561 39.65 | 1.299 33.00 | 1.740 44.20 |

- NOTES:
- HOUSING MATERIAL: GLASS FILLED LIQUID CRYSTAL POLYMER
UL94V-0, COLOR: BLACK
TERMINAL MATERIAL: BRASS ALLOY
 - FINISH: A = .000060/(0.00152) MIN. REFLOWED MATTE TIN OVER .000050/(0.00127) MIN. NICKEL PLATE. (FINISH IS BRIGHT IN APPEARANCE, THICKNESS AS APPLIED PRIOR TO REFLOW)
B = .000015/(0.00038) MIN. SELECT GOLD IN CONTACT AREA; .000100/(0.00254) MIN. SELECT MATTE TIN ON SOLDER TAILS; BOTH OVER .000050/(0.00127) MIN. NICKEL PLATE.
C = .000030/(0.00076) MIN. SELECT GOLD IN CONTACT AREA; .000100/(0.00254) MIN. SELECT MATTE TIN ON SOLDER TAILS; BOTH OVER .000050/(0.00127) MIN. NICKEL PLATE.
D = .000100/(0.00254) MIN. MATTE TIN OVER .000050/(0.00127) MIN. NICKEL PLATE.
 - PRODUCT SPECIFICATION: PS-43045
 - TAPE AND REEL PACK : SEE MOLEX DRAWING 430450002-PK
 - MATES WITH MICRO FIT (3.0) RECEPTACLE SERIES 43025
 - THE COPLANARITY DIMENSION IS ESTABLISHED BY PLACING THE ASSEMBLY ON A FLAT SURFACE. THE DISTANCE FROM THAT SURFACE TO THE BOTTOM OF ANY TERMINAL OR SOLDER NAIL MUST NOT EXCEED .006/0.15
 - CIRCUIT SIZES 2-6: "D" IS 0.265/6.74 FOR .010/0.25 STEP.
CIRCUIT SIZES 8-24: "D" IS .063/1.60 FOR .010/0.25 STEP.
 - THIS PART CONFORMS TO CLASS B REQUIREMENTS OF COSMETIC SPECIFICATION PS-45499-002.
 - TEXT ON PART IS FOR REFERENCE ONLY. TEXT AND TEXT LOCATION MAY VARY DEPENDING ON PART NUMBER AND/OR TOOL.

| | FINISH A | FINISH B | FINISH C | FINISH D |
|------|--------------|--------------|--------------|--------------|
| CKTS | MATERIAL NO: | MATERIAL NO: | MATERIAL NO: | MATERIAL NO: |
| 02 | 43045-0218 | 43045-0219 | 43045-0220 | 43045-0118 |
| 04 | 43045-0418 | 43045-0419 | 43045-0420 | 43045-0318 |
| 06 | 43045-0618 | 43045-0619 | 43045-0620 | 43045-0518 |
| 08 | 43045-0818 | 43045-0819 | 43045-0820 | 43045-0718 |
| 10 | 43045-1018 | 43045-1019 | 43045-1020 | 43045-0918 |
| 12 | 43045-1218 | 43045-1219 | 43045-1220 | 43045-1118 |
| 14 | 43045-1418 | 43045-1419 | 43045-1420 | 43045-1318 |
| 16 | 43045-1618 | 43045-1619 | 43045-1620 | 43045-1518 |
| 18 | 43045-1818 | 43045-1819 | 43045-1820 | 43045-1718 |
| 20 | 43045-2018 | 43045-2019 | 43045-2020 | 43045-1918 |
| 22 | 43045-2218 | 43045-2219 | 43045-2220 | 43045-2118 |
| 24 | 43045-2418 | 43045-2419 | 43045-2420 | 43045-2318 |

THIS DRAWING CONTAINS INFORMATION THAT IS PROPRIETARY TO MOLEX ELECTRONIC TECHNOLOGIES, LLC AND SHOULD NOT BE USED WITHOUT WRITTEN PERMISSION

| | | |
|--|------------------------|-------------------|
| DIMENSION UNITS | SCALE | CURRENT REV DESC: |
| mm | NTS | |
| GENERAL TOLERANCES (UNLESS SPECIFIED) | | |
| | MM | INCH |
| 4 PLACES | ± | ± |
| 3 PLACES | ± | ± 0.01 |
| 2 PLACES | ± 0.25 | ± 0.014 |
| 1 PLACE | ± 0.36 | ± |
| 0 PLACES | ± | ± |
| ANGULAR TOL | ± 0.5° | |
| DRAFT WHERE APPLICABLE MUST REMAIN WITHIN DIMENSIONS | THIRD ANGLE PROJECTION | DRAWING SERIES |
| | | C-SIZE 43045 |

EC NO: 744175
DRWN: ZIXUAQ 2023/03/27
CHK'D: XQZHANG 2023/03/30
APPR: XQZHANG 2023/03/30

INITIAL REVISION:
DRWN: SAMIEC 2000/03/15
APPR: EDGLE Y 2000/03/15

molex

MICRO FIT (3.0) VERTICAL SMT, NAILS
DUAL ROW HEADER

PRODUCT CUSTOMER DRAWING

DOCUMENT NUMBER: SD-43045-007
DOC TYPE: PSD
DOC PART: 001
REVISION: G5

MATERIAL NUMBER: SEE CHART
CUSTOMER: GENERAL MARKET
SHEET NUMBER: 1 OF 1