

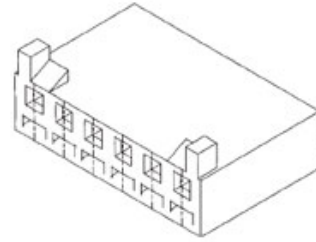
产品编号 : 430610003

Product Description : 3.96mm Pitch SPOX Housing, 3 Circuits, Natural

系列号 : 43061

状态 : Active

Product Category : Connector Housings



文件和资源

图纸


图纸 430610003_sd.pdf

3D 模型和设计文件

3D模型 430610003_stp.zip

产物环境合规

合规

GADSL/IMDS	Not Relevant
China RoHS	
EU ELV	Not Relevant
Low-Halogen Status	Not Low-Halogen per IEC 61249-2-21
REACH SVHC	Not Contained per D(2023)3788-DC (14 Jun 2023)
EU RoHS	Compliant per EU 2015/863

多部分产品合规性声明

- Eu RoHS
- REACH SVHC
- Low-Halogen

多部分行业合规性文件

- IPC 1752A Class C
- IPC 1752A Class D
- Molex Product Compliance Declaration
- IEC-62474
- chemSHERPA (xml)

产品详情

常规

状态	活动
类别	FFC / FPC Connectors
系列	52745
说明	Easy-On FFC/FPC Connector, 0.50mm Pitch, Slider Series, Right-Angle, Top Contact, 2.00mm Height, 11 Circuits, Gold Plating
产品系列	Slider
产品系列	Easy-On FFC FPC Connectors
产品名称	Easy-On
UPC	822348250493

机构

UL	E29179
----	--------

电气

每触点最大电流	0.5A
电压 - 最大	50V

物理

驱动器类型	Slider
回路数 (已载入)	11
颜色-树脂	Black, White
接触部位	顶部
耐用性(插拔次数) - 最多次数	20
阻燃性	94V-0
插配长度	2.00mm
材料 - 金属	Phosphor Bronze
材料 - 接合部位电镀	金牌
材料 - 终端电镀	金牌
净重	166.104/mg
方向	Right Angle

包装形式	Embossed Tape on Reel
PCB 定位器	否
PCB安装	Surface Mount
PCB 保持力	是
间距 - 插配接口	0.50mm
PCB 极性	是
可堆叠的	否
运行温度范围	-40° to +85° C
导线/电缆型号	FFC/FPC

可配插/可连接使用的产品

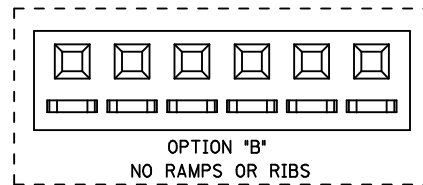
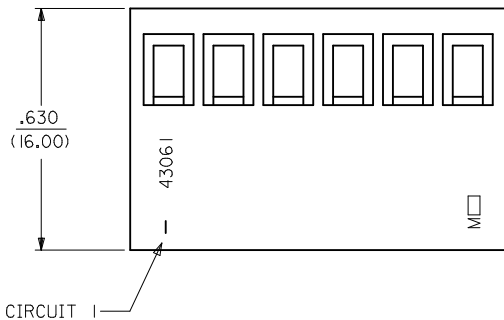
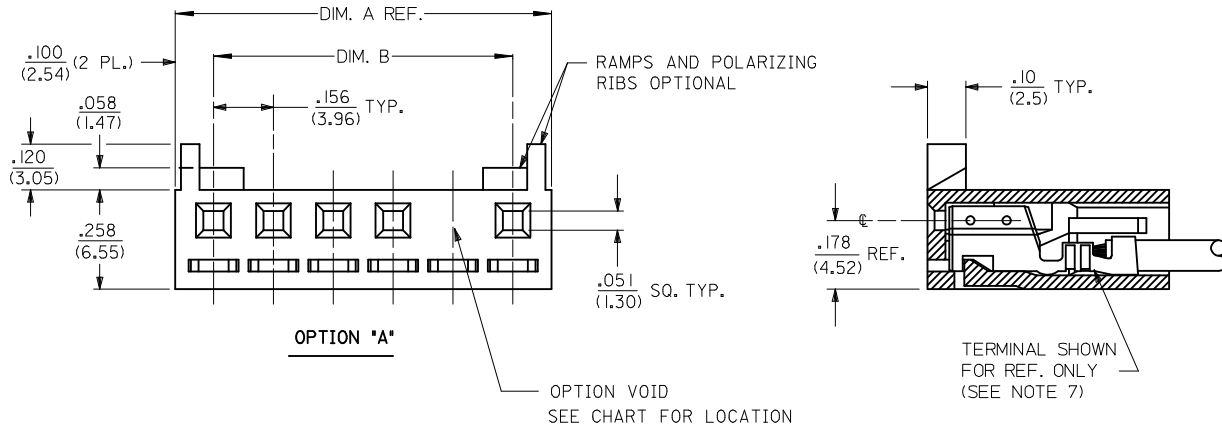
可配插部件

描述	产品编号
0.50mm Pitch Premo-Flex FFC Jumpers	<u>15020</u>
0.50mm Pitch Premo-Flex FFC Jumpers	<u>15120</u>

NOTES:

- 1) MATERIAL: GLASS FILLED POLYESTER, 94V-0
MATERIAL NUMBERS 43061-0*** : COLOR - NATURAL
MATERIAL NUMBERS 43061-1*** : COLOR - BLACK
- 2) FINISH: SEE TERMINAL DWGS.
- 3) FOR ADDITIONAL HOUSING INFORMATION REFER TO DWG. NO. 5195 OR P.S. 5195.
FOR ADDITIONAL TERMINAL INFORMATION REFER TO DWG. NO. 5194 OR 5225, OR P.S. 5194 OR 5225.
- 4) PACKAGING SPECIFICATION: PK-43061-001
- 5) MATES WITH .156/(3.96) CENTER HEADERS AND .045/(1.14) SQUARE PINS.
- 6) CONNECTOR IS DESIGNED FOR USE WITH 18-28 AWG WIRE.
- 7) HOUSING IS DESIGNED FOR USE WITH 5194 (18-22 AWG) AND 5225 (24-28 AWG) TERMINALS.
- 8) THIS PART CONFORMS TO CLASS B REQUIREMENTS OF COSMETIC SPECIFICATION PS-45499-002.

NO. OF CKTS.	DIM. A	DIM. B
2	.357 (9.06)	.156 (3.96)
3	.513 (13.02)	.312 (7.92)
4	.669 (16.98)	.468 (11.88)
5	.824 (20.94)	.624 (15.84)
6	.980 (24.90)	.780 (19.80)
7	1.136 (28.86)	.935 (23.76)
8	1.292 (32.82)	1.091 (27.72)
9	1.448 (36.78)	1.247 (31.68)
10	1.604 (40.74)	1.403 (35.64)
11	1.760 (44.70)	1.560 (39.60)
12	1.916 (48.66)	1.715 (43.56)



2	F5
1	F5
SHT. REV.	

ADD 43061-0040 EC NO: UCP2013-2764 DRWN:MKIPPER 2013/01/08 CHKD:NGUYEN 2013/01/08 APPR:FSMLTH 2013/05/21	QUALITY SYMBOLS	GENERAL TOLERANCES (UNLESS SPECIFIED)	DIMENSION STYLE	SCALE	DESIGN UNITS	THIRD ANGLE PROJECTION
	▽=0	mm INCH	IN/MM	4:1	INCH	
	▽=0	4 PLACES ± --- ± ---	DRAWN BY DATE	TITLE		
	▽=0	3 PLACES ± --- ± .010	CHECKED BY DATE	SPOX .156/(3.96) RECEPTACLE HOUSING		
	▽=0	2 PLACES ± 0.25 ± .014	PATEL 1991/10/17	molex		
	1 PLACE ± 0.35 ± ---	APPROVED BY DATE	MATERIAL NO.		DOCUMENT NO.	SHEET NO.
	0 PLACE ± ±	LENZ 1991/10/17	SEE CHART		SD-43061	1 OF 2
		ANGULAR ±1/2°	THIS DRAWING CONTAINS INFORMATION THAT IS PROPRIETARY TO MOLEX INCORPORATED AND SHOULD NOT BE USED WITHOUT WRITTEN PERMISSION			
		DRAFT WHERE APPLICABLE MUST REMAIN WITHIN DIMENSIONS				

13			12			11			10			9			8			7			6			5			4			3			2			1		
HOUSING OPTION: A						HOUSING OPTION: A						HOUSING OPTION: B						HOUSING OPTION: B																				
COLOR WHITE						COLOR BLACK						COLOR WHITE						COLOR BLACK																				
NO. OF CKTS	MATERIAL NO	VOID LOC	NO. OF CKTS	MATERIAL NO	VOID LOC	NO. OF CKTS	MATERIAL NO	VOID LOC	NO. OF CKTS	MATERIAL NO	VOID LOC	NO. OF CKTS	MATERIAL NO	VOID LOC	NO. OF CKTS	MATERIAL NO	VOID LOC	NO. OF CKTS	MATERIAL NO	VOID LOC	NO. OF CKTS	MATERIAL NO	VOID LOC	NO. OF CKTS	MATERIAL NO	VOID LOC	NO. OF CKTS	MATERIAL NO	VOID LOC	NO. OF CKTS	MATERIAL NO	VOID LOC						
2	43061-0002		2	43061-1002		2	43061-0013		2	43061-1013		2	43061-1013		2	43061-1013																						
3	43061-0003		3	43061-1003		3	43061-0014		3	43061-1014		3	43061-1014		3	43061-1014																						
4	43061-0004		4	43061-1004		4	43061-0015		4	43061-1015		4	43061-1015		4	43061-1015																						
5	43061-0005		5	43061-1005		5	43061-0016		5	43061-1016		5	43061-1016		5	43061-1016																						
6	43061-0006		6	43061-1006		6	43061-0017		6	43061-1017		6	43061-1017		6	43061-1017																						
7	43061-0007		7	43061-1007		7	43061-0018		7	43061-1018		7	43061-1018		7	43061-1018																						
8	43061-0008		8	43061-1008		8	43061-0019		8	43061-1019		8	43061-1019		8	43061-1019																						
9	43061-0009		9	43061-1009		9	43061-0020		9	43061-1020		9	43061-1020		9	43061-1020																						
10	43061-0010		10	43061-1010		10	43061-0021		10	43061-1021		10	43061-1021		10	43061-1021																						
11	43061-0011		11	43061-1011		11	43061-0022		11	43061-1022		11	43061-1022		11	43061-1022																						
12	43061-0012		12	43061-1012		12	43061-0023		12	43061-1023		12	43061-1023		12	43061-1023																						
5	43061-0030	3	5	43061-1030	3																																	
7	43061-0031	4	7	43061-1031	4																																	
9	43061-0032	5	9	43061-1032	5																																	
8	43061-0033	7	8	43061-1033	7																																	
9	43061-0034	7	9	43061-1034	7																																	
5	43061-0035	4	5	43061-1035	4																																	
8	43061-0036	2																																				
7	43061-0037	2, 5, 6																																				
7	43061-0038	1, 3, 5																																				
7	43061-0039	3, 5, 7																																				
7	43061-0040	3, 6																																				

SEE SHEET 1 EC NO: UCP2013-2764 DRAWN: KIPPER 2013/01/08 CHKD: NGUYEN 2013/01/08 APPR: F. SMITH 2013/05/21	QUALITY SYMBOLS	GENERAL TOLERANCES (UNLESS SPECIFIED)	DIMENSION STYLE	SCALE	DESIGN UNITS	THIRD ANGLE PROJECTION											
	$\nabla = 0$ $\nabla = 0$ $\nabla = 0$	<table border="1"> <tr><th>mm</th><th>INCH</th></tr> <tr><td>4 PLACES ± ---</td><td>± ---</td></tr> <tr><td>3 PLACES ± ---</td><td>± ---</td></tr> <tr><td>2 PLACES ± ---</td><td>± ---</td></tr> <tr><td>1 PLACE ± ---</td><td>± ---</td></tr> <tr><td>0 PLACE ±</td><td>±</td></tr> </table>	mm	INCH	4 PLACES ± ---		± ---	3 PLACES ± ---	± ---	2 PLACES ± ---	± ---	1 PLACE ± ---	± ---	0 PLACE ±	±	IN/MM	4:1
	mm	INCH															
	4 PLACES ± ---	± ---															
	3 PLACES ± ---	± ---															
2 PLACES ± ---	± ---																
1 PLACE ± ---	± ---																
0 PLACE ±	±																
	DRAFT WHERE APPLICABLE MUST REMAIN WITHIN DIMENSIONS	DRAWN BY: ROBERTS CHECKED BY: PATEL APPROVED BY: LENZ	DATE: 1991/11/06 DATE: 1991/11/06 DATE: 1991/11/06	TITLE SPOX .156/(3,96) RECEPTACLE HOUSING													
		MATERIAL NO. SEE CHART	DOCUMENT NO. SD-43061	molex													
						SHEET NO. 2 OF 2											