



产品编号 : [462350004](#)

**Product Description :** Micro-Fit RMF Reduced Mating Force, Crimp Terminal, Female, with .0.76µm Selective Gold (Au) over Nickel (Ni), 26-30 AWG, without Lubricant

系列号 : 46235

**状态 :** Active

**Product Category :** Crimp Terminals

---

## 文件和资源

### 图纸

[图纸 462350004\\_sd.pdf](#)

[包装设计图 PK-46235-001-001.pdf](#)

### 规格

[产品规格 PS-46235-001-001.pdf](#)


[测试摘要 430450006-TS-000.pdf](#)

[测试摘要 TS-46235-001-001.pdf](#)

---

## 产物环境合规

### 合规

GADSL/IMDS	Compliant with Exemption 44; 34; 33
China RoHS	
EU ELV	Compliant per 2000/53/EC
Low-Halogen Status	Low-Halogen per IEC 61249-2-21
REACH SVHC	Not Contained per D(2023)8585-DC (23 Jan 2024)
EU RoHS	Compliant per EU 2015/863

### 多部分产品合规性声明

- Eu RoHS
- REACH SVHC
- Low-Halogen
  
- IPC 1752A Class C
- IPC 1752A Class D
- Molex Product Compliance Declaration
- IEC-62474

## 产品详情

### 常规

状态	活动
类别	Crimp Terminals
系列	46235
说明	Micro-Fit RMF Reduced Mating Force, Crimp Terminal, Female, with .0.76 $\mu$ m Selective Gold (Au) over Nickel (Ni), 26-30 AWG, without Lubricant
应用	Power, Wire-to-Board, Wire-to-Wire
个评论	Up to 50% reduction in mating force
产品系列	Micro-Fit Connector System
产品名称	Micro-Fit RMF
UPC	800756683614

### 电气

每触点最大电流	5.0A
---------	------

### 物理

耐用性(插拔次数) - 最多次数	40
性别	女
材料 - 金属	Copper-Zinc-Tin
材料 - 接合部位电镀	金牌
材料 - 终端电镀	Nickel
净重	0.088/g
包装形式	Reel
最薄镀层 - 接合部位	0.762 $\mu$ m
最薄镀层 - 端接	1.270 $\mu$ m
终端界面类型	Crimp or Compression
导线绝缘直径	1.27mm max.
线径规格 (AWG)	26, 28, 30

线缆尺寸mm <sup>2</sup>	不适用
---------------------	-----

## 进程

无铅	不适用
----	-----

## 可连接使用部件

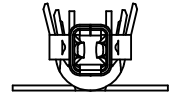
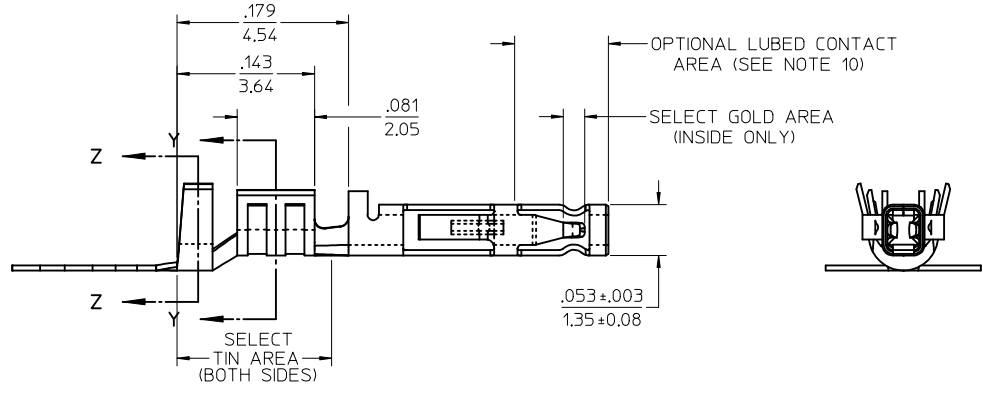
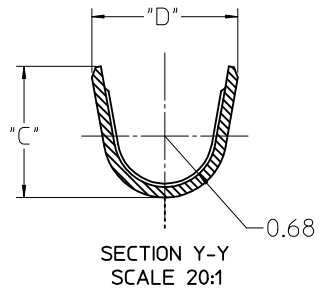
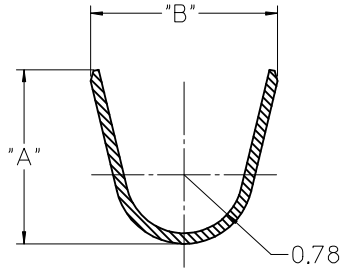
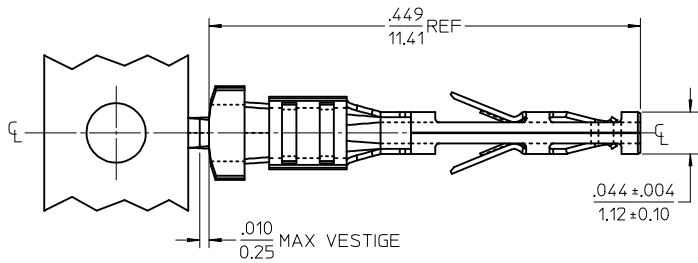
描述	产品编号
Micro-Fit 3.0 Dual Row Receptacle Housings	<u>43025</u>
Micro-Fit 3.0 Single Row Receptacle Housings	<u>43645</u>
Micro-Fit BMI Dual Row Receptacle Housings	<u>44133</u>
Micro-Fit TPA Receptacle Housings	<u>172952</u>

## 施工工具

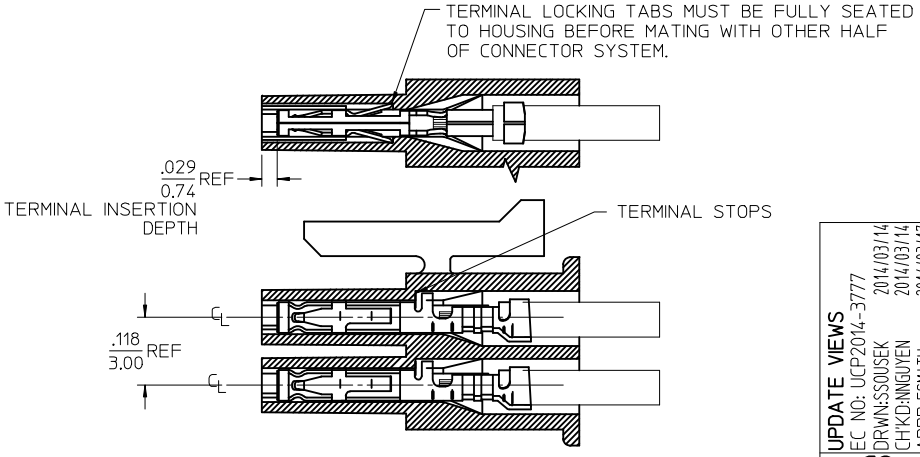
### 全局

描述	产品编号
Extraction Tool for Micro-Fit Terminals	<u>11030043</u>
FineAdjust Applicator for Micro-Fit 3.0 Low Force Crimp Terminals, 26-30 AWG Stranded Copper Wires	<u>2037024900</u>
PremiumGrade Hand Crimp Tool for Low Force Micro-Fit 3.0 Terminals, 20-30 AWG	<u>638192900</u>
T2 Terminator Tooling Die for Crimp Terminal, 26-30 AWG Wire	<u>639101300</u>

MATERIAL NUMBER	WIRE SIZE	PLATING OPTION	LUBRICATION	MAX INSULATION	"A" ±.012 ±0.30	"B" ±.012 ±0.30	"C" ±.012 ±0.30	"D" ±.012 ±0.30
46235-0001	20-24	1	NO	.073	.091	.098	.068	.073
46235-0002		2		1.85	2.30	2.48	1.73	1.93
46235-0003	26-30	1		.050	.075	.090	.048	.069
46235-0004		2		1.27	1.90	2.29	1.22	1.75
46235-5001	20-24	1	YES	.073	.091	.098	.068	.073
46235-5002		2		1.85	2.30	2.48	1.73	1.93
46235-5003	26-30	1		.050	.075	.090	.048	.069
46235-5004		2		1.27	1.90	2.29	1.22	1.75



- NOTES
- MATERIAL: COPPER ALLOY
  - TERMINAL PLATING:
    - .000015/0.00038 MIN. SELECT GOLD .000100/0.00254 MIN. SELET TIN ALL OVER .000050/0.00127 MIN. NICKEL OVERALL.
    - .000030/0.00076 MIN. SELECT GOLD .000100/0.00254 MIN. SELET TIN ALL OVER .000050/0.00127 MIN. NICKEL OVERALL.
  - PRODUCT SPECIFICATION: PS-46235-001
  - PACKAGING SPECIFICATION: PK-46235-001
  - TERMINAL FOR USE IN RECEPTACLE SERIES 43025, 43645 AND 44133.
  - FOR TERMINAL ORIENTATION IN RECEPTACLE SEE PICTORIAL IN LOWER LEFT CORNER
  - THIS TERMINAL IS DESIGNED IN METRIC
  - MOLEX RECOMMENDS THE USE OF MICRO-FIT TEST PLUG (SERIES 44242) WHENEVER CONTINUITY TESTING IS PERFORMED. TEST PLUGS MUST NOT BE USED TO MAKE OR BREAK UNDER LOAD. MOLEX DOES NOT RECOMMEND USING STANDARD MATING COMPONENTS (SERIES 43020, 43045, 43640, 43650, OR 43031) FOR HARNESS TESTING PURPOSES
  - THIS PART CONFORMS TO CLASS B REQUIREMENTS OF COSMETIC SPEC PS-45499-002
  - MOLEX PROPRIETARY CONTACT LUBRICATION EB-1 IS APPLIED IN THE CONTACT AREA AS SHOWN. SEE CHART FOR APPLICABLE PART NUMBERS.



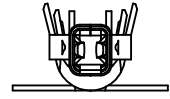
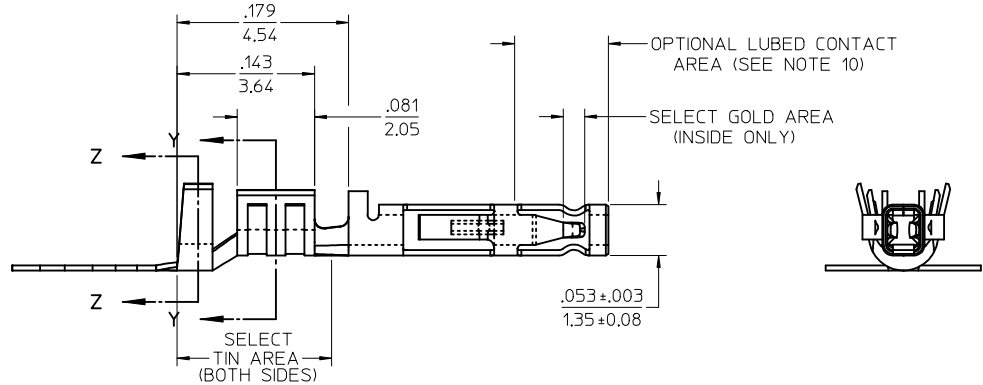
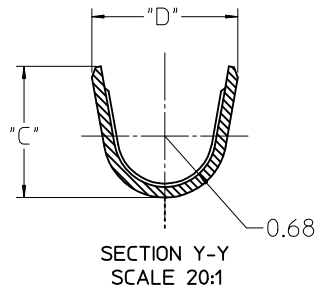
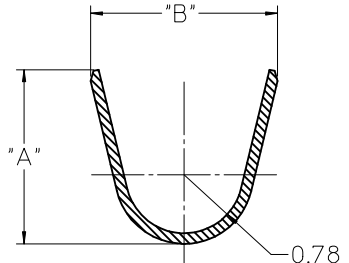
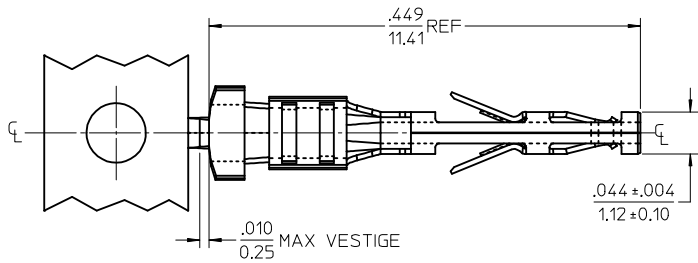
REV	DESCRIPTION
C2	UPDATE VIEWS EC NO: UCP2014-3777 DRW:SSOUSEK 2014/03/14 CHKD:NGUYEN 2014/03/14 APPR:FSMITH 2014/03/17

QUALITY SYMBOLS	
▽=0	▽=0

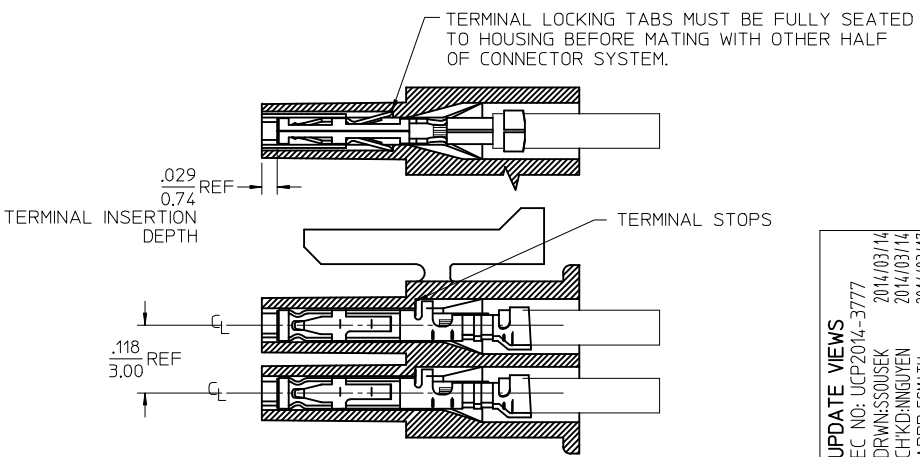
GENERAL TOLERANCES (UNLESS SPECIFIED)	
mm	INCH
4 PLACES ± .010	± .010
3 PLACES ± .012	± .012
2 PLACES ± 0.25	± .014
1 PLACE ± 0.35	± .014
ANGULAR ± 1/2°	

DIMENSION STYLE <b>IN/MM</b>	SCALE <b>10:1</b>	DESIGN UNITS <b>METRIC</b>	THIRD ANGLE PROJECTION
DRAWN BY TGREGORI	DATE 2007/02/05	<b>MICRO-FIT (3.0) FEMALE CRIMP TERMINAL LOW MATE FORCE</b>	
CHECKED BY JCOMERC I	DATE 2007/03/19		
APPROVED BY JCOMERC I	DATE 2007/03/19	<b>MOLEX INCORPORATED</b>	
MATERIAL NO. <b>SEE CHART</b>	DOCUMENT NO. <b>SD-46235-001</b>		
DRAFT WHERE APPLICABLE MUST REMAIN WITHIN DIMENSIONS		SHEET NO. <b>1 OF 1</b>	

MATERIAL NUMBER	WIRE SIZE	PLATING OPTION	LUBRICATION	MAX INSULATION	"A" ±.012 ±0.30	"B" ±.012 ±0.30	"C" ±.012 ±0.30	"D" ±.012 ±0.30
46235-0001	20-24	1	NO	.073	.091	.098	.068	.073
46235-0002		2		1.85	2.30	2.48	1.73	1.93
46235-0003	26-30	1		.050	.075	.090	.048	.069
46235-0004		2		1.27	1.90	2.29	1.22	1.75
46235-5001	20-24	1	YES	.073	.091	.098	.068	.073
46235-5002		2		1.85	2.30	2.48	1.73	1.93
46235-5003	26-30	1		.050	.075	.090	.048	.069
46235-5004		2		1.27	1.90	2.29	1.22	1.75



- NOTES
- MATERIAL: COPPER ALLOY
  - TERMINAL PLATING:
    - .000015/0.00038 MIN. SELECT GOLD .000100/0.00254 MIN. SELET TIN ALL OVER .000050/0.00127 MIN. NICKEL OVERALL.
    - .000030/0.00076 MIN. SELECT GOLD .000100/0.00254 MIN. SELET TIN ALL OVER .000050/0.00127 MIN. NICKEL OVERALL.
  - PRODUCT SPECIFICATION: PS-46235-001
  - PACKAGING SPECIFICATION: PK-46235-001
  - TERMINAL FOR USE IN RECEPTACLE SERIES 43025, 43645 AND 44133.
  - FOR TERMINAL ORIENTATION IN RECEPTACLE SEE PICTORIAL IN LOWER LEFT CORNER
  - THIS TERMINAL IS DESIGNED IN METRIC
  - MOLEX RECOMMENDS THE USE OF MICRO-FIT TEST PLUG (SERIES 44242) WHENEVER CONTINUITY TESTING IS PERFORMED. TEST PLUGS MUST NOT BE USED TO MAKE OR BREAK UNDER LOAD. MOLEX DOES NOT RECOMMEND USING STANDARD MATING COMPONENTS (SERIES 43020, 43045, 43640, 43650, OR 43031) FOR HARNESS TESTING PURPOSES
  - THIS PART CONFORMS TO CLASS B REQUIREMENTS OF COSMETIC SPEC PS-45499-002
  - MOLEX PROPRIETARY CONTACT LUBRICATION EB-1 IS APPLIED IN THE CONTACT AREA AS SHOWN. SEE CHART FOR APPLICABLE PART NUMBERS.



UPDATE VIEWS	EC NO: UCP2014-3777	2014/03/14	DRWIN:SSOUSEK	2014/03/14	CHKD:NGUYEN	2014/03/17	APPR:FSMITH
REV	C2						

QUALITY SYMBOLS	GENERAL TOLERANCES (UNLESS SPECIFIED)
▽=0	mm INCH
▽=0	4 PLACES ± --- ± ---
	3 PLACES ± --- ±.010
	2 PLACES ± 0.25 ±.014
	1 PLACE ± 0.35 ± ---
	ANGULAR ± 1/2°
	DRAFT WHERE APPLICABLE MUST REMAIN WITHIN DIMENSIONS

DIMENSION STYLE		SCALE	DESIGN UNITS	THIRD ANGLE PROJECTION
IN/MM		10:1	METRIC	
DRAWN BY	DATE	TITLE		
TGREGORI	2007/02/05	MICRO-FIT (3.0) FEMALE CRIMP TERMINAL LOW MATE FORCE		
CHECKED BY	DATE	MATERIAL NO.		
JCOMERC I	2007/03/19	SEE CHART		
APPROVED BY	DATE	DOCUMENT NO.		
JCOMERC I	2007/03/19	SD-46235-001		
SIZE		SHEET NO.		
C		1 OF 1		

MOLEX INCORPORATED		THIS DRAWING CONTAINS INFORMATION THAT IS PROPRIETARY TO MOLEX INCORPORATED AND SHOULD NOT BE USED WITHOUT WRITTEN PERMISSION	
--------------------	--	---	--