



产品编号 : 462355001

Product Description : Micro-Fit RMF High Mating Cycle, Reduced Mating Force, Crimp Terminal, Female, with 0.38µm Selective Gold (Au) over Nickel (Ni), 20-24 AWG, with Lubricant

系列号 : 46235

状态 : Active

Product Category : Crimp Terminals

文件和资源

图纸

[图纸 462355001_sd.pdf](#)

[包装设计图 PK-46235-001-001.pdf](#)

规格


[产品规格 PS-46235-001-001.pdf](#)

[测试摘要 TS-46235-001-001.pdf](#)

[测试摘要 TS-46235-501-001.pdf](#)

产物环境合规

合规

GADSL/IMDS	Compliant with Exemption 44; 34; 33
China RoHS	
EU ELV	Not Relevant
Low-Halogen Status	Low-Halogen per IEC 61249-2-21
REACH SVHC	Not Contained per D(2023)8585-DC (23 Jan 2024)
EU RoHS	Compliant per EU 2015/863

多部分产品合规性声明

- Eu RoHS
- REACH SVHC
- Low-Halogen

- IPC 1752A Class C
- IPC 1752A Class D
- Molex Product Compliance Declaration
- IEC-62474

产品详情

常规

状态	活动
类别	Crimp Terminals
系列	46235
说明	Micro-Fit RMF High Mating Cycle, Reduced Mating Force, Crimp Terminal, Female, with 0.38µm Selective Gold (Au) over Nickel (Ni), 20-24 AWG, with Lubricant
应用	Power, Wire-to-Board, Wire-to-Wire
个评论	90% increase in mating cycles (250 cycles) and up to 50% reduction in mating force
产品系列	Micro-Fit Connector System
产品名称	Micro-Fit RMF
UPC	883906382377

电气

每触点最大电流	5.0A
---------	------

物理

耐用性(插拔次数) - 最多次数	250
性别	女
材料 - 金属	Copper-Zinc-Tin
材料 - 接合部位电镀	金牌
材料 - 终端电镀	Nickel
净重	0.074/g
包装形式	Reel
最薄镀层 - 接合部位	0.381µm
最薄镀层 - 端接	1.270µm
终端界面类型	Crimp or Compression
导线绝缘直径	1.85mm max.

线径规格 (AWG)	20, 22, 24
线缆尺寸mm ²	不适用

可连接使用部件

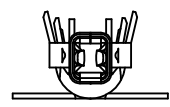
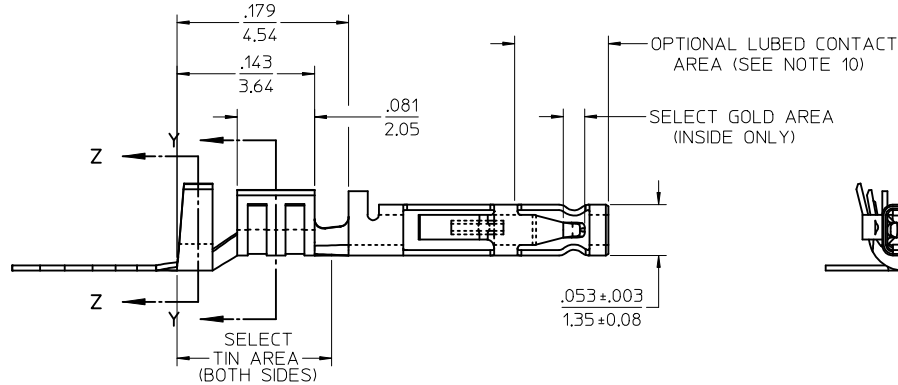
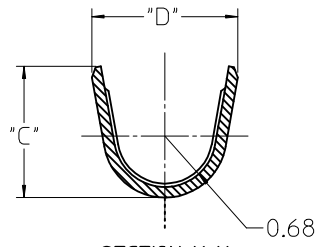
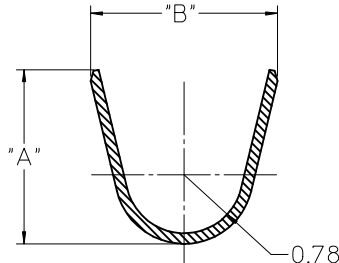
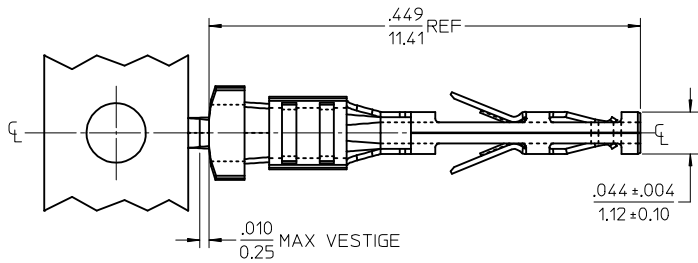
描述	产品编号
Micro-Fit 3.0 Dual Row Receptacle Housings	<u>43025</u>
Micro-Fit 3.0 Single Row Receptacle Housings	<u>43645</u>
Micro-Fit BMI Dual Row Receptacle Housings	<u>44133</u>
Micro-Fit TPA Receptacle Housings	<u>172952</u>

施工工具

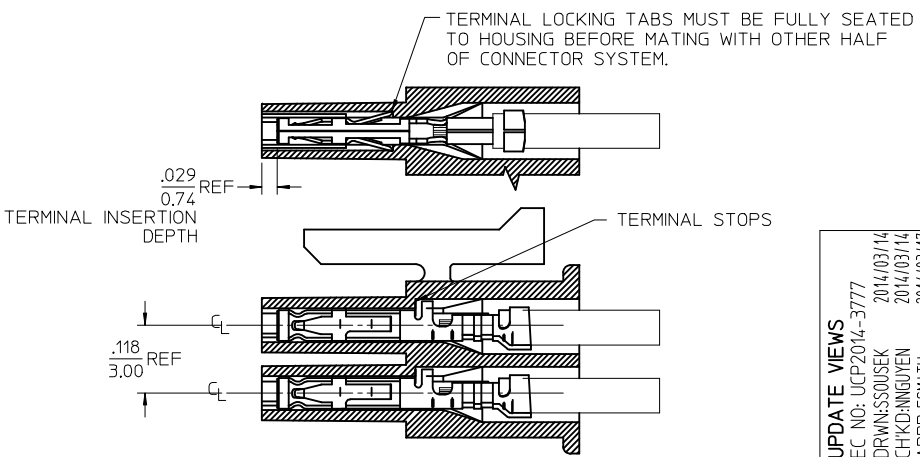
全局

描述	产品编号
Extraction Tool for Micro-Fit Terminals	<u>11030043</u>
PremiumGrade Hand Crimp Tool for Low Force Micro-Fit 3.0 Terminals, 20-30 AWG	<u>638192900</u>
FineAdjust Applicator for Low-Force Micro-Fit 3.0 Terminals, for 20-24 AWG Wire with Insulation Diameter 1.30-1.85mm	<u>639046500</u>
T2 Terminator Tooling to be used with Low Force Crimp Terminals, 20-24 AWG Wire	<u>639101400</u>

MATERIAL NUMBER	WIRE SIZE	PLATING OPTION	LUBRICATION	MAX INSULATION	"A" ±.012 ±0.30	"B" ±.012 ±0.30	"C" ±.012 ±0.30	"D" ±.012 ±0.30
46235-0001	20-24	1	NO	.073	.091	.098	.068	.073
46235-0002		2		1.85	2.30	2.48	1.73	1.93
46235-0003		1		.050	.075	.090	.048	.069
46235-0004	26-30	2	YES	1.27	1.90	2.29	1.22	1.75
46235-5001		1		.073	.091	.098	.068	.073
46235-5002	2	1.85		2.30	2.48	1.73	1.93	
46235-5003	26-30	1		.050	.075	.090	.048	.069
46235-5004		2		1.27	1.90	2.29	1.22	1.75



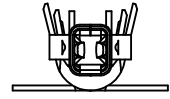
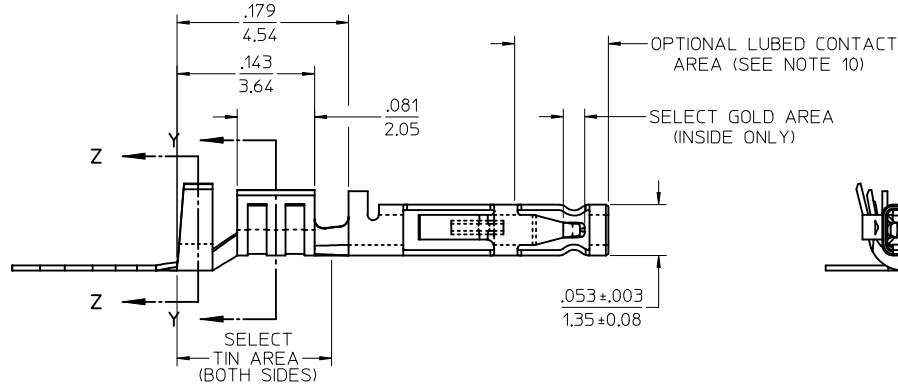
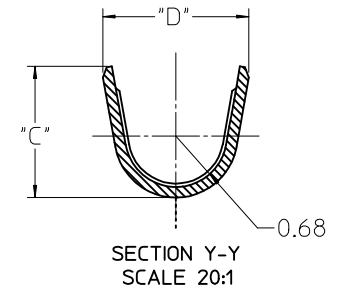
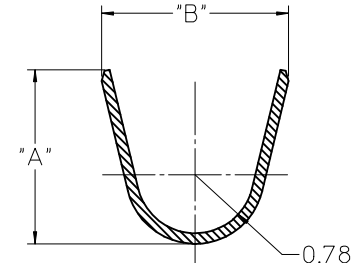
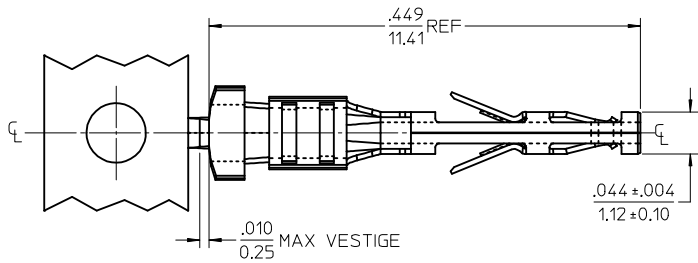
- NOTES
- MATERIAL: COPPER ALLOY
 - TERMINAL PLATING:
 - .000015/0.00038 MIN. SELECT GOLD .000100/0.00254 MIN. SELET TIN ALL OVER .000050/0.00127 MIN. NICKEL OVERALL.
 - .000030/0.00076 MIN. SELECT GOLD .000100/0.00254 MIN. SELET TIN ALL OVER .000050/0.00127 MIN. NICKEL OVERALL.
 - PRODUCT SPECIFICATION: PS-46235-001
 - PACKAGING SPECIFICATION: PK-46235-001
 - TERMINAL FOR USE IN RECEPTACLE SERIES 43025, 43645 AND 44133.
 - FOR TERMINAL ORIENTATION IN RECEPTACLE SEE PICTORIAL IN LOWER LEFT CORNER
 - THIS TERMINAL IS DESIGNED IN METRIC
 - MOLEX RECOMMENDS THE USE OF MICRO-FIT TEST PLUG (SERIES 44242) WHENEVER CONTINUITY TESTING IS PERFORMED. TEST PLUGS MUST NOT BE USED TO MAKE OR BREAK UNDER LOAD. MOLEX DOES NOT RECOMMEND USING STANDARD MATING COMPONENTS (SERIES 43020, 43045, 43640, 43650, OR 43031) FOR HARNESS TESTING PURPOSES
 - THIS PART CONFORMS TO CLASS B REQUIREMENTS OF COSMETIC SPEC PS-45499-002
 - MOLEX PROPRIETARY CONTACT LUBRICATION EB-1 IS APPLIED IN THE CONTACT AREA AS SHOWN. SEE CHART FOR APPLICABLE PART NUMBERS.



UPDATE VIEWS	EC NO: UCP2014-3777	2014/03/14
DRW:WSSOUSEK	CHKD:NGUYEN	2014/03/14
APPR:FSMITH		2014/03/17
REV	DESCRIPTION	
C2		

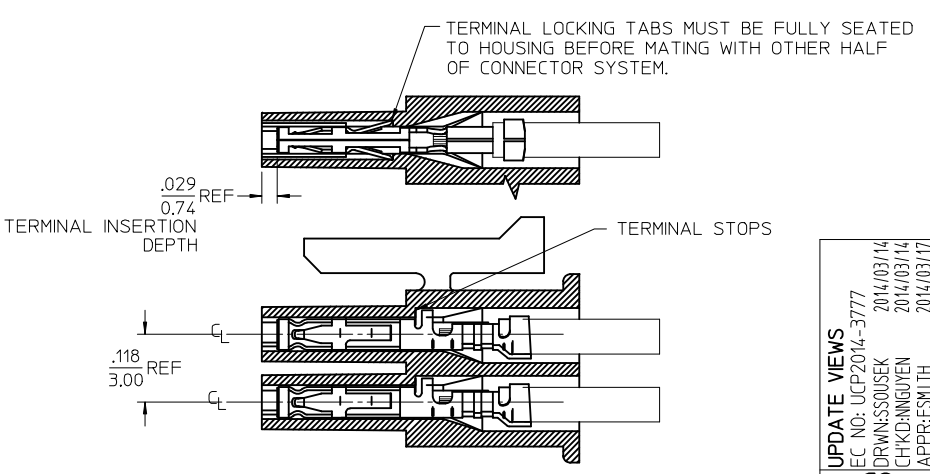
QUALITY SYMBOLS ▽=0 ▽=0	GENERAL TOLERANCES (UNLESS SPECIFIED)	DIMENSION STYLE IN/MM	SCALE 10:1	DESIGN UNITS METRIC	THIRD ANGLE PROJECTION
	mm INCH	DRAWN BY TGREGORI	DATE 2007/02/05	TITLE MICRO-FIT (3.0) FEMALE CRIMP TERMINAL LOW MATE FORCE	
	4 PLACES ± --- ± ---	CHECKED BY JCOMERC I	DATE 2007/03/19	MATERIAL NO. SD-46235-001	SHEET NO. 1 OF 1
	3 PLACES ± --- ±.010	APPROVED BY JCOMERC I	DATE 2007/03/19	MOLEX INCORPORATED	
	2 PLACES ± 0.25 ±.014	DRAFT WHERE APPLICABLE MUST REMAIN WITHIN DIMENSIONS			
	1 PLACE ± 0.35 ± ---	SEE CHART			
	ANGULAR ± 1/2°	THIS DRAWING CONTAINS INFORMATION THAT IS PROPRIETARY TO MOLEX INCORPORATED AND SHOULD NOT BE USED WITHOUT WRITTEN PERMISSION			

	13	12	11	10	9	8	7	6	5	4	3	2	1
J	MATERIAL NUMBER	WIRE SIZE	PLATING OPTION	LUBRICATION	MAX INSULATION	"A" ±.012 ±0.30	"B" ±.012 ±0.30	"C" ±.012 ±0.30	"D" ±.012 ±0.30				
	46235-0001	20-24	1	NO	.073	.091	.098	.068	.073				
	46235-0002		2		1.85	2.30	2.48	1.73	1.93				
	46235-0003	26-30	1		.050	.075	.090	.048	.069				
	46235-0004		2	1.27	1.90	2.29	1.22	1.75					
	46235-5001	20-24	1	YES	.073	.091	.098	.068	.073				
	46235-5002		2		1.85	2.30	2.48	1.73	1.93				
I	46235-5003	26-30	1		.050	.075	.090	.048	.069				
	46235-5004		2		1.27	1.90	2.29	1.22	1.75				



NOTES

- MATERIAL: COPPER ALLOY
- TERMINAL PLATING:
 - .000015/0.00038 MIN. SELECT GOLD .000100/0.00254 MIN. SELET TIN ALL OVER .000050/0.00127 MIN. NICKEL OVERALL.
 - .000030/0.00076 MIN. SELECT GOLD .000100/0.00254 MIN. SELET TIN ALL OVER .000050/0.00127 MIN. NICKEL OVERALL.
- PRODUCT SPECIFICATION: PS-46235-001
- PACKAGING SPECIFICATION: PK-46235-001
- TERMINAL FOR USE IN RECEPTACLE SERIES 43025, 43645 AND 44133.
- FOR TERMINAL ORIENTATION IN RECEPTACLE SEE PICTORIAL IN LOWER LEFT CORNER
- THIS TERMINAL IS DESIGNED IN METRIC
- MOLEX RECOMMENDS THE USE OF MICRO-FIT TEST PLUG (SERIES 44242) WHENEVER CONTINUITY TESTING IS PERFORMED. TEST PLUGS MUST NOT BE USED TO MAKE OR BREAK UNDER LOAD. MOLEX DOES NOT RECOMMEND USING STANDARD MATING COMPONENTS (SERIES 43020, 43045, 43640, 43650, OR 43031) FOR HARNESS TESTING PURPOSES
- THIS PART CONFORMS TO CLASS B REQUIREMENTS OF COSMETIC SPEC PS-45499-002
- MOLEX PROPRIETARY CONTACT LUBRICATION EB-1 IS APPLIED IN THE CONTACT AREA AS SHOWN. SEE CHART FOR APPLICABLE PART NUMBERS.



UPDATE VIEWS	EC NO: UCP2014-3777	2014/03/14	2014/03/14
DRW:WSSOUSEK	CHKD:NGUYEN	2014/03/14	2014/03/17
APPR:FSMITH			
REV	DESCRIPTION		
C2			

QUALITY SYMBOLS ▽=0 ▽=0	GENERAL TOLERANCES (UNLESS SPECIFIED)	DIMENSION STYLE IN/MM	SCALE 10:1	DESIGN UNITS METRIC	THIRD ANGLE PROJECTION
	mm INCH	DRAWN BY TGREGORI	DATE 2007/02/05	TITLE MICRO-FIT (3.0) FEMALE CRIMP TERMINAL LOW MATE FORCE	
	4 PLACES ± --- ± ---	CHECKED BY JCOMERC I	DATE 2007/03/19	MOLEX INCORPORATED	SHEET NO. 1 OF 1
	3 PLACES ± --- ±.010	APPROVED BY JCOMERC I	DATE 2007/03/19		
	2 PLACES ± 0.25 ±.014	MATERIAL NO. SEE CHART		DOCUMENT NO. SD-46235-001	
	1 PLACE ± 0.35 ± ---	THIS DRAWING CONTAINS INFORMATION THAT IS PROPRIETARY TO MOLEX INCORPORATED AND SHOULD NOT BE USED WITHOUT WRITTEN PERMISSION			
	ANGULAR ± 1/2°				
	DRAFT WHERE APPLICABLE MUST REMAIN WITHIN DIMENSIONS				