

This document was generated on 09/02/2021

PLEASE CHECK WWW.MOLEX.COM FOR LATEST PART INFORMATION

Part Number: [0050841020](#)
Status: **Active**
Overview: [MLX Power Connectors](#)
Description: 2.13mm Diameter MLX Power Crimp Housing Plug, 2 Circuits, Natural

Documents:

Drawing (PDF)	Packaging Specification PK-42021-XX-001 (PDF)
3D Model	Test Summary TS-42022-0001-001 (PDF)
3D Model (PDF)	Datasheet (PDF)
Product Specification PS-42022-0001-001 (PDF)	RoHS Certificate of Compliance (PDF)

Agency Certification

CSA	LR19980
UL	E29179

General

Product Family	Crimp Housings
Series	42021
Application	Power, Wire-to-Board, Wire-to-Wire
Comments	Glow Wire Equivalent Part Number 366430002 . Current – Maximum per contact 20A if used with 36663 and 36664 terminal

Overview

Product Name	MLX Power Connectors
UPC	MLX 800753577503

Physical

Circuits (maximum)	2
Circuits Detail	2
Color - Resin	Natural
Flammability	94V-2
Gender	Plug
Glow-Wire Capable	No
Keying to Mating Part	None
Lock to Mating Part	Yes
Material - Resin	Nylon
Net Weight	1.960/g
Number of Rows	1
Packaging Type	Bag
Panel Mount	No
Pitch - Mating Interface	6.35mm
Polarized to Mating Part	Yes
Stackable	No
Temperature Range - Operating	-55° to +105°C

Electrical

Current - Maximum per Contact	13.5A, 20.0A
-------------------------------	--------------

Solder Process Data

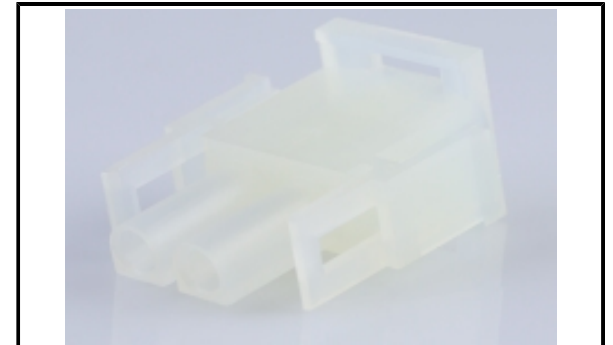
Lead-free Process Capability	N/A
------------------------------	-----

Material Info

Engineering Number	42021-2A
--------------------	----------

Reference - Drawing Numbers

Packaging Specification	PK-42021-XX-001
Product Specification	PS-42022-0001-001
Sales Drawing	SD-42021-XX-001



Series image - Reference only

EU ELV

Not Relevant

EU RoHS

Compliant

REACH SVHC

Not Contained Per -
D(2021)4569-DC (8
July 2021)

Halogen-Free

Status

Low-Halogen

For more information, please visit [Contact US](#)

China ROHS

ELV

RoHS Phthalates

Green Image

Not Relevant

Not Contained

Search Parts in this Series

[42021](#) Series

Mates With

MLX Power Connector Header [42002](#) . MLX Pin and Socket Receptacle [42022](#) . MLX Power Connector Header [43255](#)

Use With

MLX Crimp Terminal [36663](#) , [36664](#) , [42023](#) , [42024](#) . MLX Male Pre-Crimped Lead [797582029](#) , [797582030](#) . MLX Female Pre-Crimped Lead [797582031](#) , [797582032](#)



产品编号 : [50841020](#)

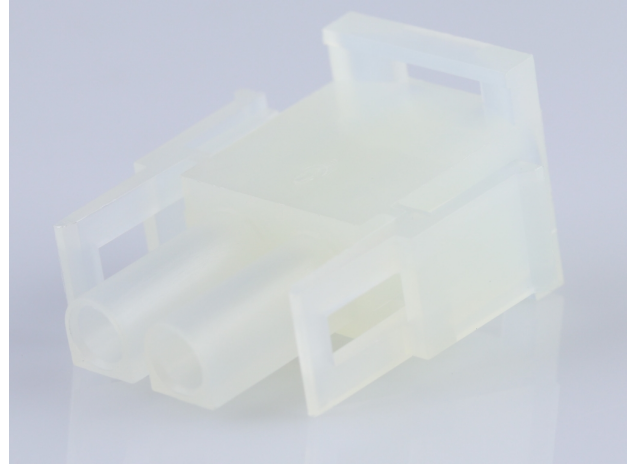
Product Description : 2.13mm Diameter MLX Power Crimp Housing Plug, 2 Circuits, Natural

系列号 : 42021

状态 : Active

Product Category : Connector Housings

工程编号 : 42021-2A



文件和资源

图纸

[图纸 050841020_sd.pdf](#)

[包装设计图 PK-42021-XX-001.pdf](#)

3D 模型和设计文件

[3D模型 050841020_stp.zip](#)


规格

[产品规格 PS-42022-0001-001.pdf](#)

[测试摘要 TS-42022-0001-001.pdf](#)

产物环境合规

合规

GADSL/IMDS	Not Relevant
China RoHS	
EU ELV	Not Relevant
Low-Halogen Status	Low-Halogen per IEC 61249-2-21
REACH SVHC	Not Contained per D(2023)3788-DC (14 Jun 2023)
EU RoHS	Compliant per EU 2015/863

多部分产品合规性声明

- Eu RoHS

- REACH SVHC

- Low-Halogen

多部分行业合规性文件

- IPC 1752A Class C

- IPC 1752A Class D

- Molex Product Compliance Declaration

- IEC-62474

- chemSHERPA (xml)

欧盟 RoHS 合格证书

产品详情

常规

状态	活动
类别	Connector Housings
系列	42021
说明	2.13mm Diameter MLX Power Crimp Housing Plug, 2 Circuits, Natural
应用	Power, Wire-to-Board, Wire-to-Wire
个评论	Glow Wire Equivalent Part Number 366430002; Maximum current per contact 20A if used with 36663 and 36664 terminal
产品系列	MLX Power Connectors
产品名称	MLX
UPC	800753577503

机构

CSA	LR19980
UL	E29179

电气

每触点最大电流	13.5A, 20.0A
---------	--------------

物理

电路详图	2
电路数 (最多)	2
颜色-树脂	Natural

阻燃性	94V-2
性别	Plug
符合灼热丝规范	否
插接极性	无
锁定插接部位	是
材料 - 树脂	Nylon
净重	1.960/g
行数	1
包装形式	Bag
面板安装式	否
间距 - 插配接口	6.35mm
有极性的插配件	是
可堆叠的	否
运行温度范围	-55° to +105° C

进程

无铅	不适用
----	-----

可配插/可连接使用的产品

可配插部件

描述	产品编号
6.35mm Pitch MLX Vertical Power Connector Headers	<u>42002</u>
2.13mm Diameter MLX Pin and Socket Receptacles	<u>42022</u>
MLX Vertical Power Connector Headers	<u>43255</u>

可连接使用部件

描述	产品编号
Pre-Crimped Lead MLX Male-to-MLX Male, Tin (Sn) Plating, 150.00mm Length, 18 AWG, Black	<u>/content/molex/molex-dot-com/cn/zh/products/product-page.html/797582029.html</u>
Pre-Crimped Lead MLX Male-to-MLX Male, Tin (Sn) Plating, 300.00mm Length, 18 AWG, Black	<u>/content/molex/molex-dot-com/cn/zh/products/product-page.html/797582030.html</u>

Pre-Crimped Lead MLX Female-to-MLX Female, Tin (Sn) Plating, 150.00mm Length, 18 AWG, Black	/content/molex/molex-dot-com/cn/zh/products/product-page.html/797582031.html
Pre-Crimped Lead MLX Female-to-MLX Female, Tin (Sn) Plating, 300.00mm Length, 18 AWG, Black	/content/molex/molex-dot-com/cn/zh/products/product-page.html/797582032.html
MLX Crimp Terminals	36663
MLX Female Terminals	36664
MLX Male Crimp Terminals	42023
MLX Female Crimp Terminals	42024