

This document was generated on 09/13/2021

**PLEASE CHECK WWW.MOLEX.COM FOR LATEST PART INFORMATION**

**Part Number:** [0050842062](#)  
**Status:** **Active**  
**Overview:** [MLX Power Connectors](#)  
**Description:** 2.13mm Diameter MLX Pin and Socket Receptacle, 6 Circuits, Natural

**Documents:**

<a href="#">Drawing (PDF)</a>	<a href="#">Packaging Specification PK-42022-XX-001 (PDF)</a>
<a href="#">3D Model</a>	<a href="#">Test Summary TS-42022-0001-001 (PDF)</a>
<a href="#">3D Model (PDF)</a>	<a href="#">Datasheet (PDF)</a>
<a href="#">Product Specification PS-42022-0001-001 (PDF)</a>	<a href="#">RoHS Certificate of Compliance (PDF)</a>

**Agency Certification**

CSA	LR19980
UL	E29179

**General**

Product Family	Crimp Housings
Series	<a href="#">42022</a>
Application	Power, Wire-to-Wire
Comments	Glow Wire Equivalent Part Number <a href="#">366440005</a> . Current – Maximum per contact 20A if used with <a href="#">36663</a> and <a href="#">36664</a> terminal
Overview	<a href="#">MLX Power Connectors</a>
Product Name	MLX
UPC	800754386685

**Physical**

Circuits (maximum)	6
Circuits Detail	6
Color - Resin	Natural
Flammability	94V-0
Gender	Receptacle
Glow-Wire Capable	No
Keying to Mating Part	None
Lock to Mating Part	Yes
Material - Resin	Nylon
Net Weight	5.080/g
Number of Rows	2
Packaging Type	Carton
Panel Mount	Yes
Pitch - Mating Interface	6.35mm
Polarized to Mating Part	Yes
Stackable	No
Temperature Range - Operating	-55° to +105°C

**Electrical**

Current - Maximum per Contact	20.0A
-------------------------------	-------

**Solder Process Data**

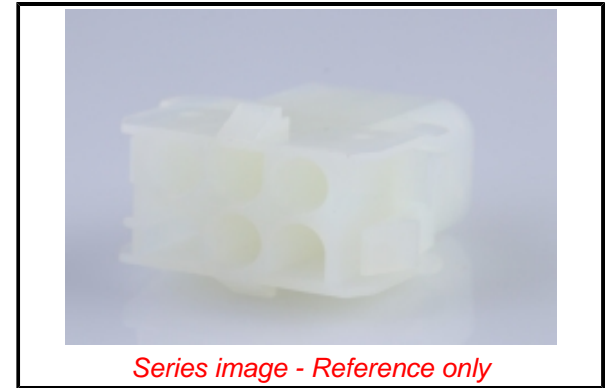
Lead-free Process Capability	N/A
------------------------------	-----

**Material Info**

Engineering Number	42022-6C
--------------------	----------

**Reference - Drawing Numbers**

Packaging Specification	PK-42022-XX-001
Product Specification	PS-42022-0001-001
Sales Drawing	SD-42022-XX-001



**EU ELV**

**Not Relevant**

**EU RoHS**

**Compliant**

**REACH SVHC**

Not Contained Per -  
D(2011)4569-DC (8  
July 2021)

**Halogen-Free**

**Status**

**Low-Halogen**

For more information, please visit [Contact US](#)

China ROHS

ELV

RoHS Phthalates

Green Image

Not Relevant

Not Contained

**Search Parts in this Series**

[42022 Series](#)

**Mates With**

MLX Power Crimp Housing Plug [42021](#)

**Use With**

MLX Crimp Terminal [42023](#) , [42024](#) . MLX Male Pre-Crimped Lead [797582029](#) , [797582030](#) . MLX Female Pre-Crimped Lead [797582031](#) , [797582032](#)



产品编号 : [50842062](#)

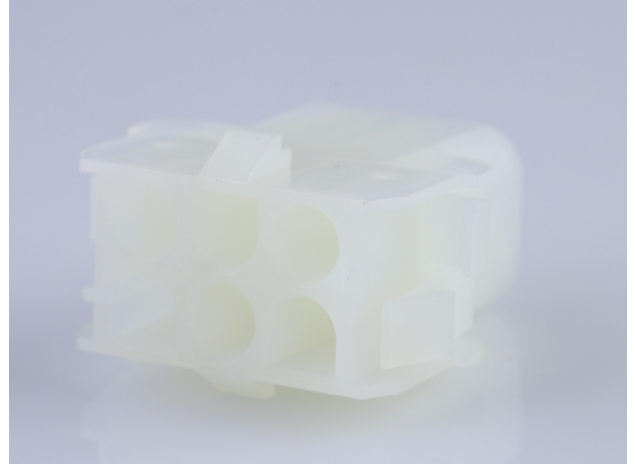
Product Description : 2.13mm Diameter MLX Pin and Socket Receptacle, 6 Circuits, Natural

系列号 : 42022

状态 : Active

Product Category : Connector Housings

工程编号 : 42022-6C



---

## 文件和资源

### 图纸

[图纸 050842062\\_sd.pdf](#)

[包装设计图 PK-42022-XX-001.pdf](#)

### 3D 模型和设计文件

[3D模型 050842062\\_stp.zip](#)

### 规格


[产品规格 PS-42022-0001-001.pdf](#)

[测试摘要 TS-42022-0001-001.pdf](#)

---

## 产物环境合规

### 合规

GADSL/IMDS	Not Relevant
China RoHS	
EU ELV	Not Relevant
Low-Halogen Status	Low-Halogen per IEC 61249-2-21
REACH SVHC	Contains melamine per D(2023)3788-DC (14 Jun 2023)
EU RoHS	Compliant per EU 2015/863

### 多部分产品合规性声明

- Eu RoHS

- REACH SVHC

- Low-Halogen

多部分行业合规性文件

- IPC 1752A Class C

- IPC 1752A Class D

- Molex Product Compliance Declaration

- IEC-62474

- chemSHERPA (xml)

欧盟 RoHS 合格证书

---

## 产品详情

### 常规

状态	活动
类别	Connector Housings
系列	42022
说明	2.13mm Diameter MLX Pin and Socket Receptacle, 6 Circuits, Natural
应用	Power, Wire-to-Wire
个评论	Glow Wire Equivalent Part Number 366440005; Maximum current per contact 20A if used with 36663 and 36664 terminal
产品系列	MLX Power Connectors
产品名称	MLX
UPC	800754386685

### 机构

CSA	LR19980
UL	E29179

### 电气

每触点最大电流	20.0A
---------	-------

### 物理

电路详图	6
电路数 (最多)	6
颜色-树脂	Natural

阻燃性	94V-0
性别	Receptacle
符合灼热丝规范	否
插接极性	无
锁定插接部位	是
材料 - 树脂	Nylon
净重	5.080/g
行数	2
包装形式	Carton
面板安装式	是
间距 - 插配接口	6.35mm
有极性的插配件	是
可堆叠的	否
运行温度范围	-55° to +105° C

#### 进程

无铅	不适用
----	-----

---

#### 可配插/可连接使用的产品

##### 可配插部件

描述	产品编号
2.13mm Diameter MLX Power Crimp Housing Plugs	<u>42021</u>

##### 可连接使用部件

描述	产品编号
Pre-Crimped Lead MLX Male-to-MLX Male, Tin (Sn) Plating, 150.00mm Length, 18 AWG, Black	<u><a href="/content/molex/molex-dot-com/cn/zh/products/product-page.html/797582029.html">/content/molex/molex-dot-com/cn/zh/products/product-page.html/797582029.html</a></u>
Pre-Crimped Lead MLX Male-to-MLX Male, Tin (Sn) Plating, 300.00mm Length, 18 AWG, Black	<u><a href="/content/molex/molex-dot-com/cn/zh/products/product-page.html/797582030.html">/content/molex/molex-dot-com/cn/zh/products/product-page.html/797582030.html</a></u>
Pre-Crimped Lead MLX Female-to-MLX Female, Tin (Sn) Plating, 150.00mm Length, 18 AWG, Black	<u><a href="/content/molex/molex-dot-com/cn/zh/products/product-page.html/797582031.html">/content/molex/molex-dot-com/cn/zh/products/product-page.html/797582031.html</a></u>

Pre-Crimped Lead MLX Female-to-MLX Female, Tin (Sn) Plating, 300.00mm Length, 18 AWG, Black	<a href="/content/molex/molex-dot-com/cn/zh/products/product-page.html/797582032.html">/content/molex/molex-dot-com/cn/zh/products/product-page.html/797582032.html</a>
MLX Male Crimp Terminals	<u>42023</u>
MLX Female Crimp Terminals	<u>42024</u>

---

This document was generated on Dec 11, 2023