



产品编号 : 5022250801

Product Description : 2.50mm, 3.50mm,  
3.70mm CMC Header, Right-Angle, 80  
Circuits

系列号 : 502225

状态 : Active

Product Category : PCB Headers and  
Receptacles

---

## 文件和资源

### 图纸

[图纸 5022250801\\_sd.pdf](#)


### 3D 模型和设计文件

[3D模型 5022250801\\_stp.zip](#)

---

## 产物环境合规

### 合规

GADSL/IMDS	Compliant with Exemption 44; 33
China RoHS	
EU ELV	Compliant per 2000/53/EC
Low-Halogen Status	Not Low-Halogen per IEC 61249-2-21
REACH SVHC	Not Contained per D(2023)8585-DC (23 Jan 2024)
EU RoHS	Compliant per EU 2015/863

### 多部分产品合规性声明

- Eu RoHS
- REACH SVHC
- Low-Halogen
  
- IPC 1752A Class C
- IPC 1752A Class D
- Molex Product Compliance Declaration
- IEC-62474
- chemSHERPA (xml)

### 欧盟 RoHS 合格证书

---

## 产品详情

### 常规

状态	活动
类别	PCB Headers and Receptacles
系列	502225
说明	2.50mm, 3.50mm, 3.70mm CMC Header, Right-Angle, 80 Circuits
应用	Automotive, Power, Wire-to-Board
个评论	Coding: 32w Black, 48w Brown
元件类型	PCB Header
产品系列	CMC and CMX Sealed, Hybrid, Modular Connectors
产品名称	CMC
UPC	822350659871

### 电气

每触点最大电流	6.0A
电压 - 最大	14V DC

### 物理

断开	否
回路数 (已载入)	80
电路数 (最多)	80
颜色-树脂	黑色
耐用性(插拔次数) - 最多次数	20
先接后断	是
符合灼热丝规范	否
可配插产品指南	是
插接极性	是
锁定插接部位	是
材料 - 金属	Copper Alloy
材料 - 接合部位电镀	Tin
材料 - 终端电镀	Tin
净重	57.000/g
行数	4

方向	Right Angle
包装形式	Tray
PC 焊脚长度	3.60mm
PCB 定位器	是
PCB 保持力	无
推荐的 PCB 厚度	1.60mm
间距 - 插配接口	2.50mm, 3.50mm, 3.70mm
间距 - 终端界面	2.50mm, 3.50mm, 3.70mm
有极性的插配件	是
PCB 极性	是
有护墙的	Closed Ends
可堆叠的	否
运行温度范围	-40° to +105° C
终端界面类型	Solder or Weld

## 进程

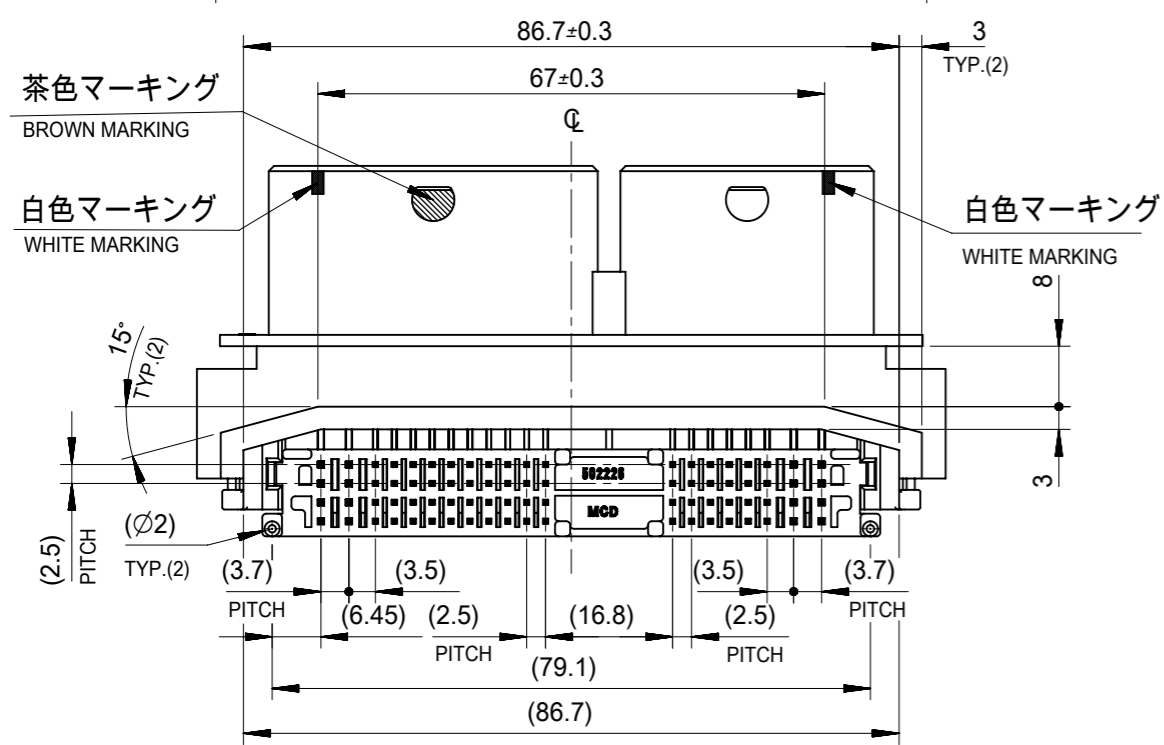
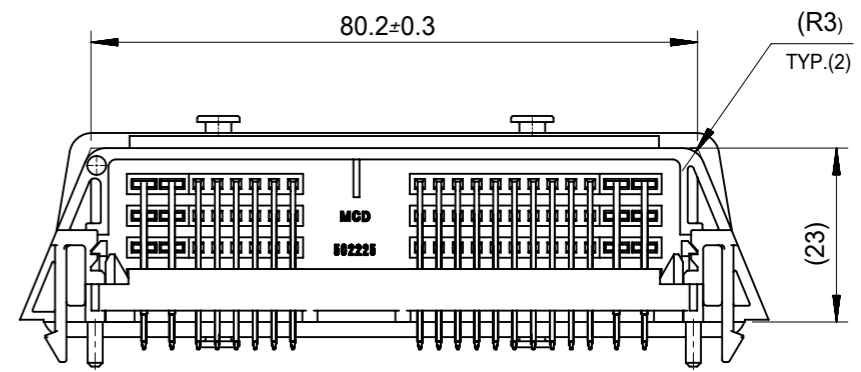
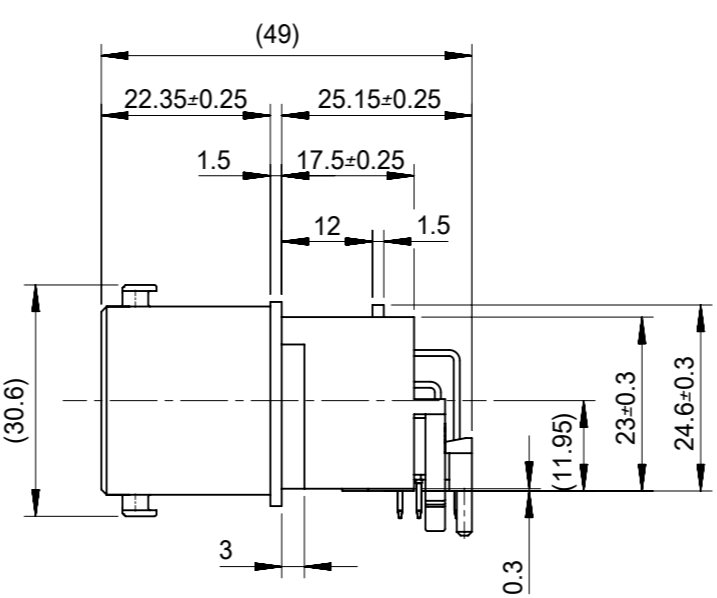
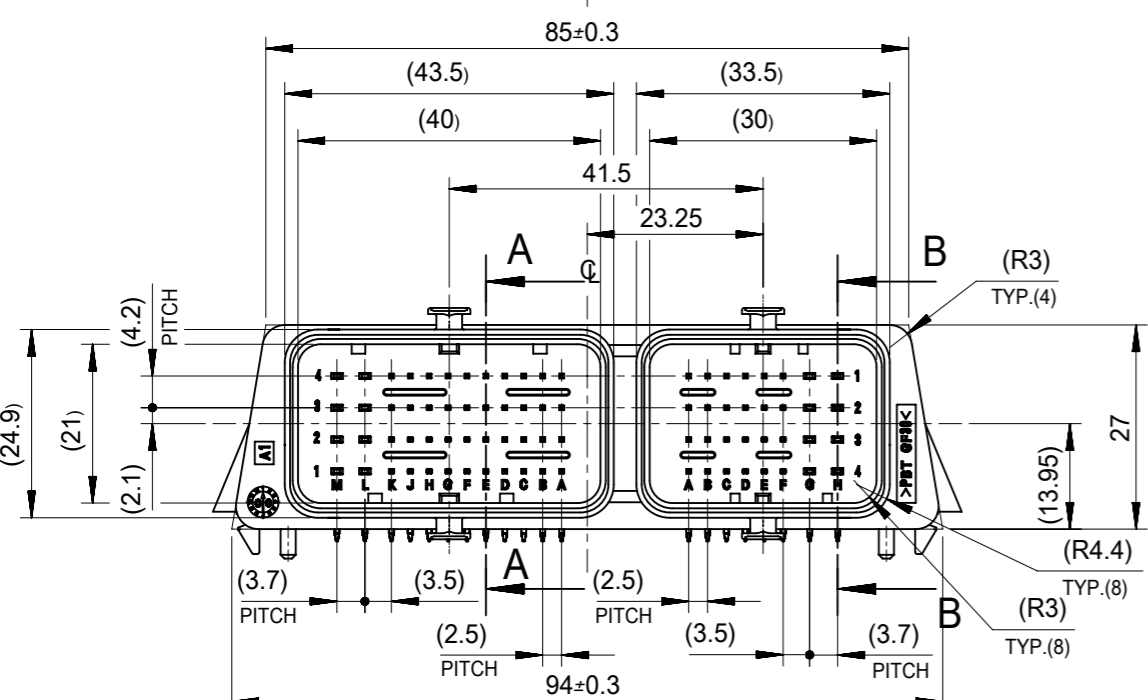
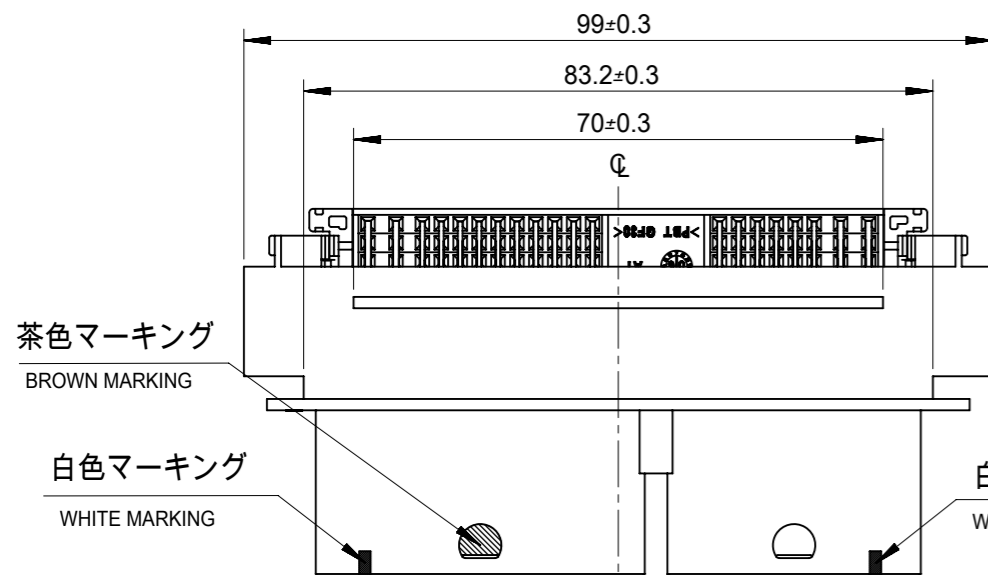
最长持续时间	25
无铅	WAVE
最大周期	1
最高温度	260

---

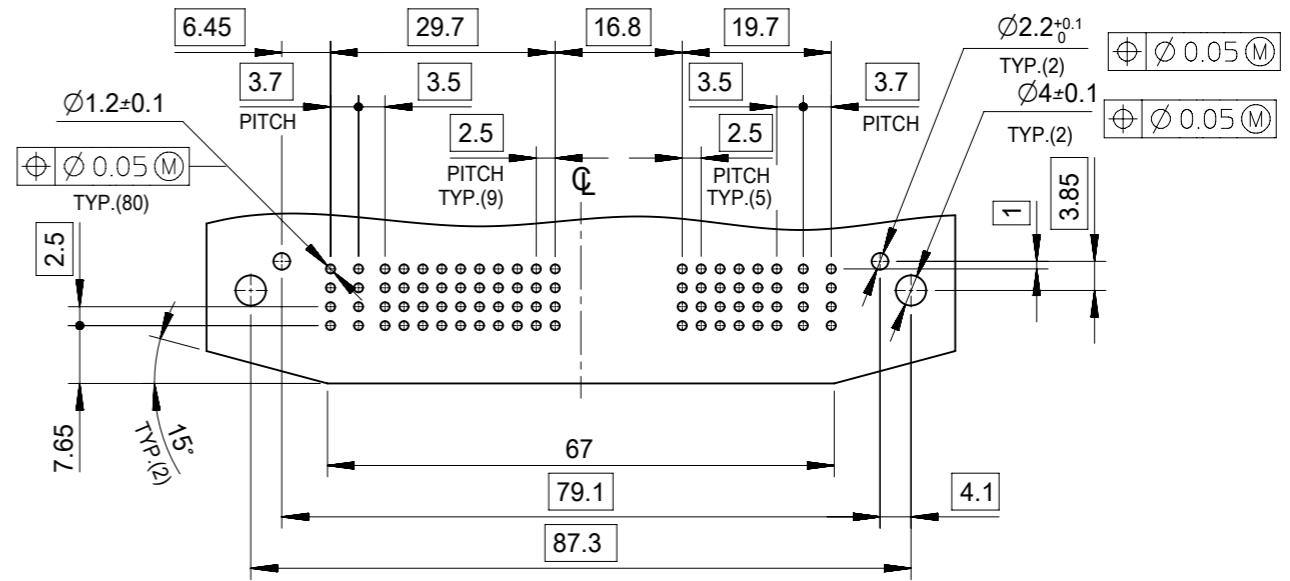
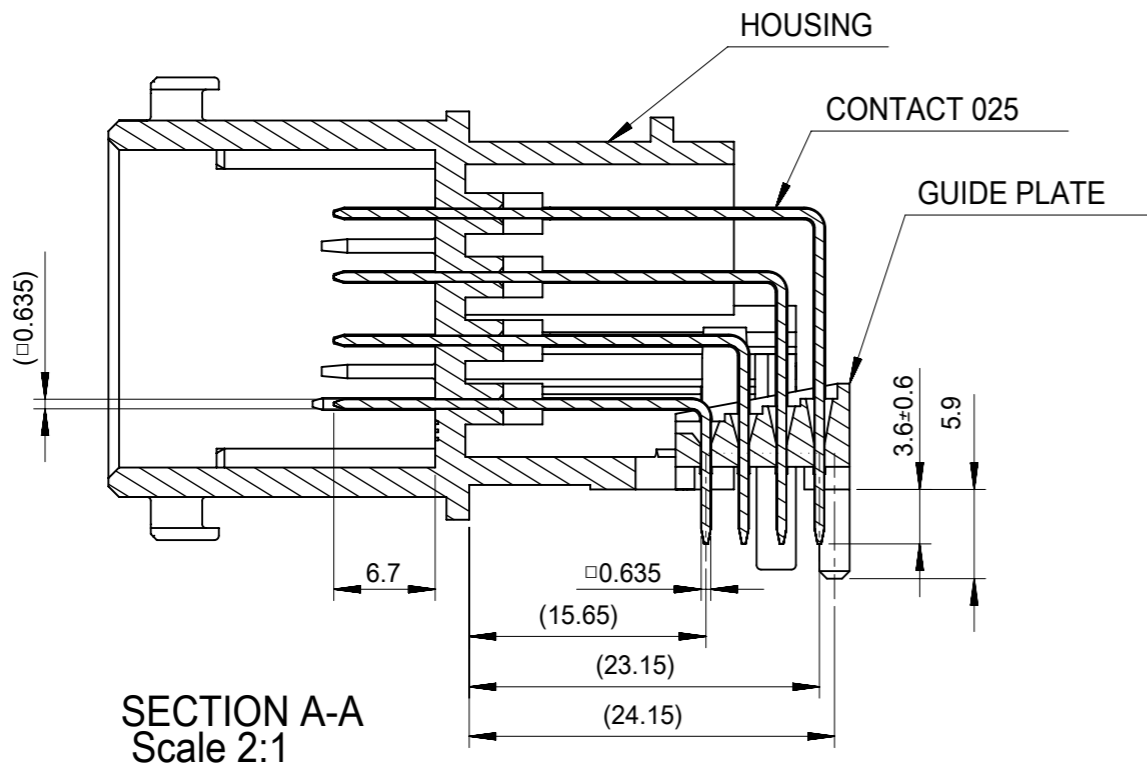
## 可配插/可连接使用的产品

### 可配插部件

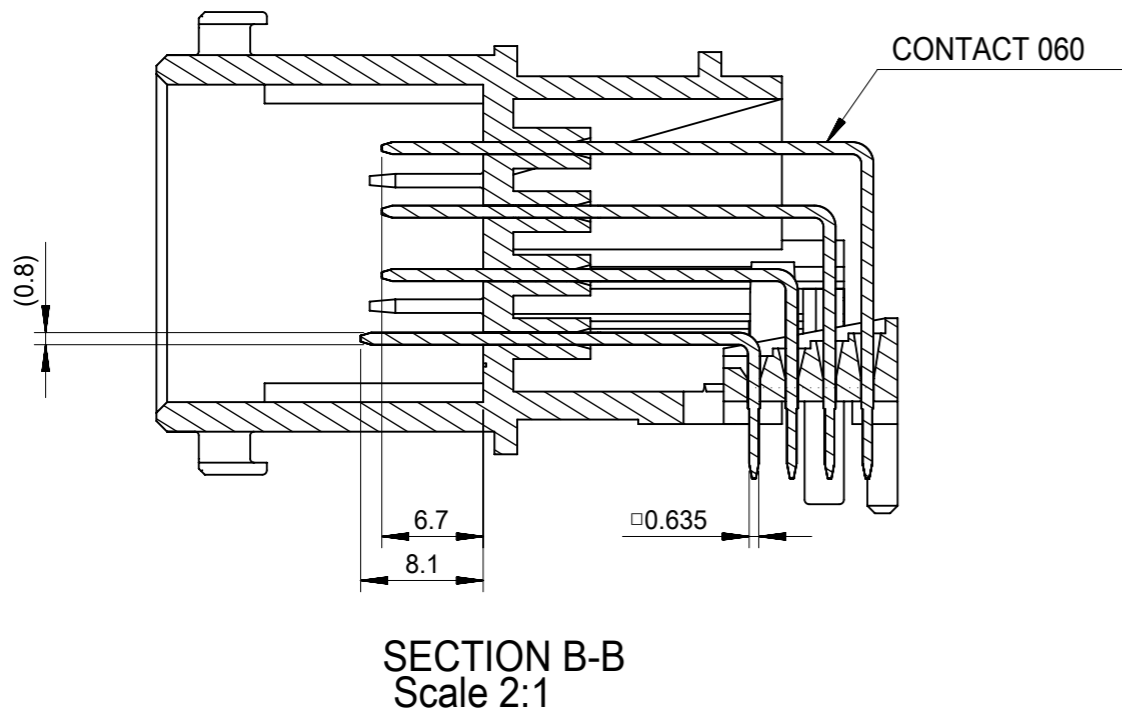
描述	产品编号
.635mm, 1.50mm, CMC Receptacle, 32 Circuits, Right Wire Output, Black Coding, Mat Sealed	<u>643193211</u>
.635mm, 1.50mm, CMC Receptacle, 48 Circuits, Left Wire Output, Brown Coding, Mat Sealed	<u>643201319</u>



THIS DRAWING CONTAINS INFORMATION THAT IS PROPRIETARY TO MOLEX ELECTRONIC TECHNOLOGIES, LLC AND SHOULD NOT BE USED WITHOUT WRITTEN PERMISSION									
DIMENSION UNITS		SCALE		CURRENT REV DESC:					
mm		1:1		<b>molex</b> CMC HEADER 80PIN PRODUCT CUSTOMER DRAWING EC NO: 600672 DRWN: JOKAMURA 2018/06/07 CHK'D: SANDO 2018/06/26 APPR: TOSADA 2018/06/26 INITIAL REVISION: DRWN: SANDO 2006/05/25 APPR: MAYAMAMOTO 2010/03/10 DOCUMENT NUMBER: SD-502225-001 DOC TYPE: PSD DOC PART: 001 REVISION: A					
GENERAL TOLERANCES (UNLESS SPECIFIED)									
ANGULAR TOL ± 2.0°									
4 PLACES ± 0.2									
3 PLACES ± 0.25									
2 PLACES ± 0.3									
1 PLACE ±									
0 PLACES ±									
DRAFT WHERE APPLICABLE MUST REMAIN WITHIN DIMENSIONS		THIRD ANGLE PROJECTION		DRAWING		SERIES		MATERIAL NUMBER	
		A3-SIZE		502225		502225-0801		GENERAL MARKET	
SHEET NUMBER		1 OF 2							



基板穴推奨寸法 (部品実装側)  
RECOMMENDED PCB LAYOUT (COMPONENT SIDE)

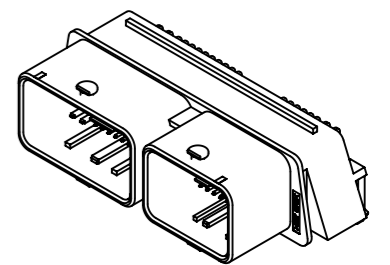


注記  
NOTES

- ハウジング材料: PBT, GF30%, 黒色  
HOUSING MATERIAL: PBT, GF30%, BLACK
- 端子材料: 銅合金  
CONTACT MATERIAL: COPPER ALLOY
- 端子表面処理:  
ピン部: 錫めっき  
ニール部: 錫めっき  
下地: ニッケルめっき (025, 060端子全面)  
CONTACT PLATING:  
CONTACT AREA: Sn PLATING  
TAIL AREA: Sn PLATING  
UNDER NICKEL PLATING (ALL OVER)
- 適合基板厚: 1.6±0.1mm  
APPLICABLE PCB THICKNESS: 1.6±0.1mm

- 適合嵌合コネクタ:  
64319-3211 (32ピン, 黒, 右),  
64320-1319 (48ピン, 茶, 左) 又は,  
64319-1211 (32ピン, 黒, 左),  
64320-3319 (48ピン, 茶, 右)  
APPLICABLE MATING CONNECTOR:  
64319-3211 (32PIN, BLACK, RIGHT),  
64320-1319 (48PIN, BROWN, LEFT) OR,  
64319-1211 (32PIN, BLACK, LEFT),  
64320-3319 (48PIN, BROWN, RIGHT)

- 製品仕様書:  
PS-64319-001参照  
PRODUCT SPECIFICATION:  
REFER TO PS-64319-001
- GENERAL TOLERANCES (UNLESS SPECIFIED)  
10 UNDER ±0.2  
10 OVER 30 UNDER ±0.25  
30 OVER ±0.3  
ANGULAR ±2 DEGREES



THIS DRAWING CONTAINS INFORMATION THAT IS PROPRIETARY TO MOLEX ELECTRONIC TECHNOLOGIES, LLC AND SHOULD NOT BE USED WITHOUT WRITTEN PERMISSION									
DIMENSION UNITS		SCALE		CURRENT REV DESC:				<b>molex</b>	
mm		1:1							
GENERAL TOLERANCES (UNLESS SPECIFIED)		ANGULAR TOL ± 2.0°		EC NO: 600672		2018/06/07		CMC HEADER 80PIN	
4 PLACES ± 0.2		3 PLACES ± 0.25		DRWN: JOKAMURA		2018/06/26		PRODUCT CUSTOMER DRAWING	
2 PLACES ± 0.3		1 PLACE ±		CHK'D: SANDO		2018/06/26		DOCUMENT NUMBER	
0 PLACES ±		DRAFT WHERE APPLICABLE MUST REMAIN WITHIN DIMENSIONS		APPR: TOSADA		2018/06/26		SD-502225-001	
THIRD ANGLE PROJECTION		DRAWING		INITIAL REVISION:		2006/05/25		DOC TYPE DOC PART REVISION	
A3-SIZE		502225		DRWN: SANDO		2010/03/10		PSD 001 A	
SERIES		MATERIAL NUMBER		CUSTOMER		SHEET NUMBER			
502225		502225-0801		GENERAL MARKET		2 OF 2			