



产品编号 : 5024262030

系列号 : 502426

Product Category : Board-to-Board Connectors

Product Description : SlimStack Board-to-Board Receptacle, 0.40mm Pitch, Surface Mount, Dual Row, Vertical, 1.00mm Stacking Height, with Solder Tabs, with Vacuum Tape, 20 Circuits

状态 : Active

---

## 文件和资源

### 图纸

图纸 5024262030\_sd.pdf

### 3D 模型和设计文件

2D 图纸 DXF 5024262030.dxf

2D 图纸 DXF PDF 5024262030.pdf

3D模型 5024262030\_stp.zip

### 规格

应用规格 AS-502426-001-001.pdf


包装规格 5024269200-SPK-200.pdf

产品规格 5024260000-000.pdf

---

## 产物环境合规

### 合规

GADSL/IMDS	Compliant with Exemption 44; 33
China RoHS	
EU ELV	Not Relevant
Low-Halogen Status	Low-Halogen per IEC 61249-2-21
REACH SVHC	Not Contained per D(2023)8585-DC (23 Jan 2024)
EU RoHS	Compliant per EU 2015/863

### 多部分产品合规性声明

- Eu RoHS
- REACH SVHC
- Low-Halogen
- IPC 1752A Class C

- IPC 1752A Class D
- Molex Product Compliance Declaration
- IEC-62474
- chemSHERPA (xml)

欧盟 RoHS 合格证书

## 产品详情

### 常规

状态	活动
类别	Board-to-Board Connectors
系列	502426
说明	SlimStack Board-to-Board Receptacle, 0.40mm Pitch, Surface Mount, Dual Row, Vertical, 1.00mm Stacking Height, with Solder Tabs, with Vacuum Tape, 20 Circuits
产品系列	0.4, T10
应用	Board-to-Board, Signal
元件类型	PCB Receptacle
产品系列	SlimStack Board-to-Board/Board-to-FPC Connectors
产品名称	SlimStack
UPC	800756832289

### 电气

每触点最大电流	0.3A
电压 - 最大	50V AC/DC

### 物理

回路数 (已载入)	20
电路数 (最多)	20
颜色-树脂	黑色
耐用性(插拔次数) - 最多次数	30
符合灼热丝规范	否
锁定插接部位	是
插配长度	1.00mm
材料 - 金属	Phosphor Bronze

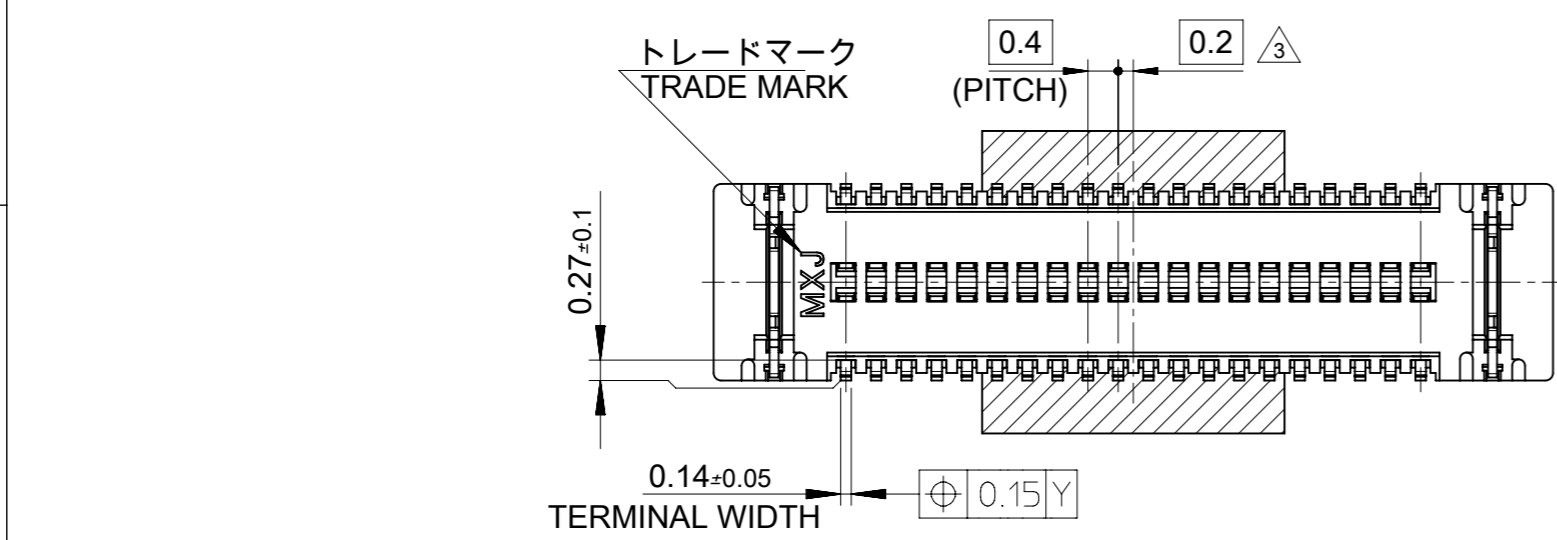
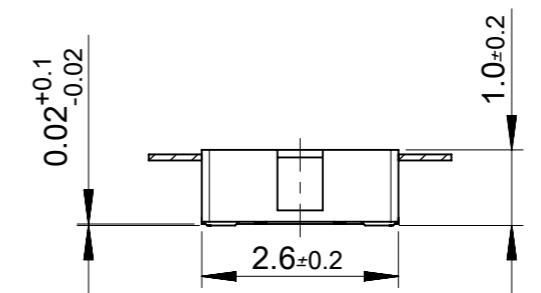
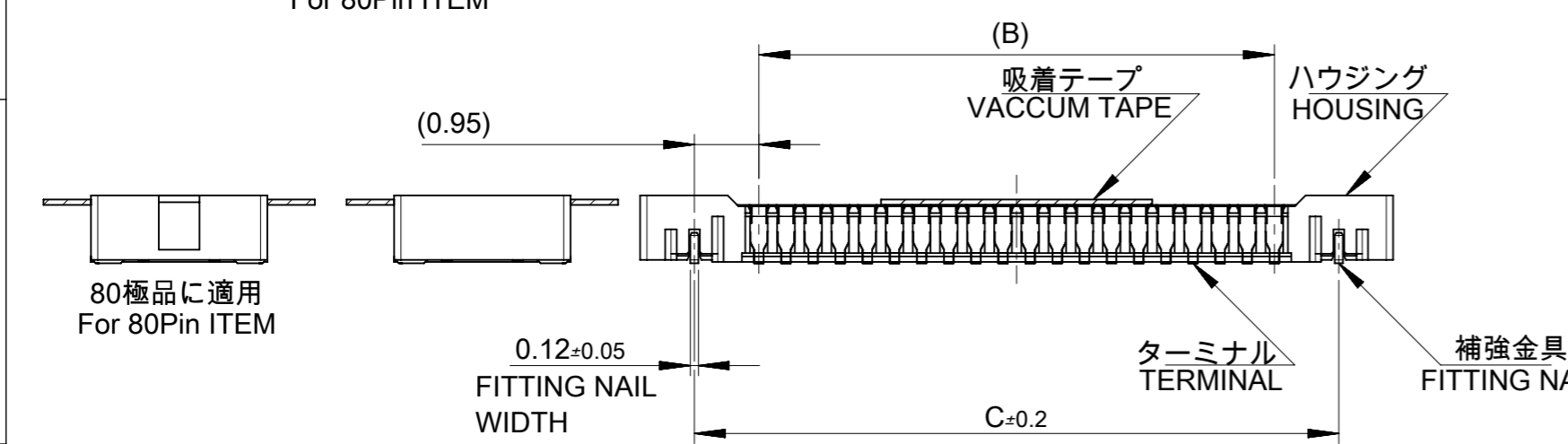
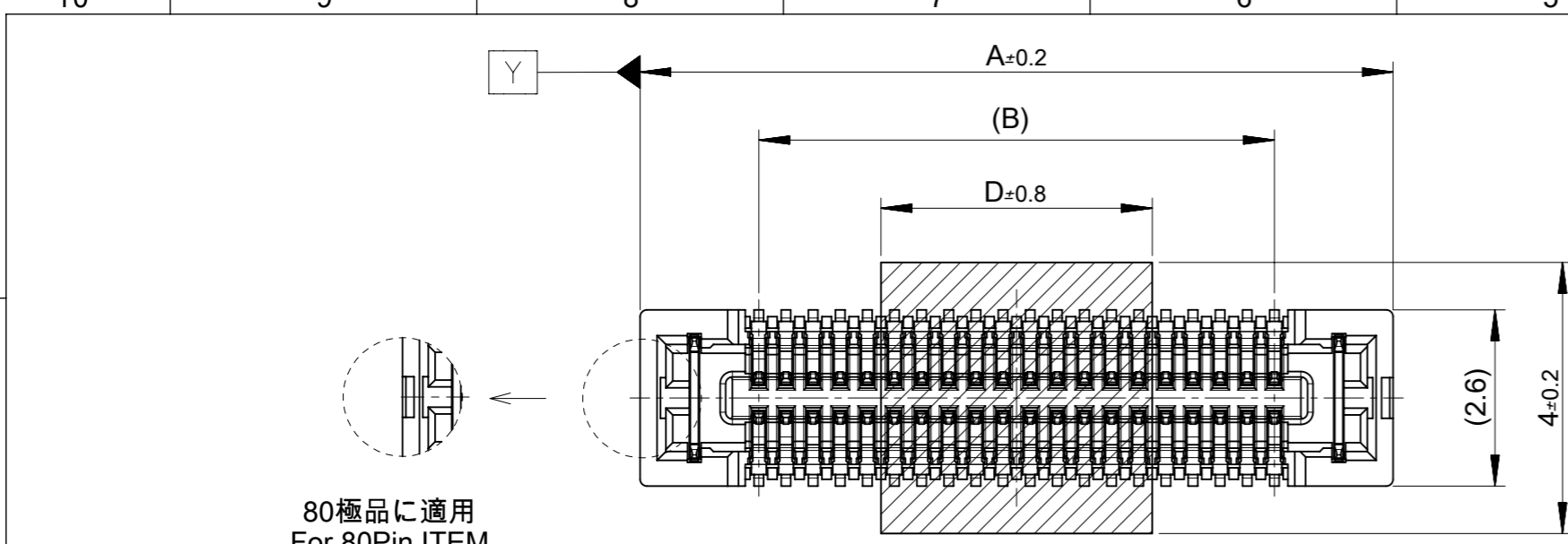
材料 - 接合部位电镀	金牌
材料 - 终端电镀	金牌
净重	24.861/mg
行数	2
方向	垂直
包装形式	Embossed Tape on Reel
PCB 定位器	否
PCB 保持力	是
间距 - 插配接口	0.40mm
间距 - 终端界面	0.40mm
有极性的插配件	否
PCB 极性	否
运行温度范围	-40° to +85° C
终端界面类型	Surface Mount

---

## 可配插/可连接使用的产品

### 可配插部件

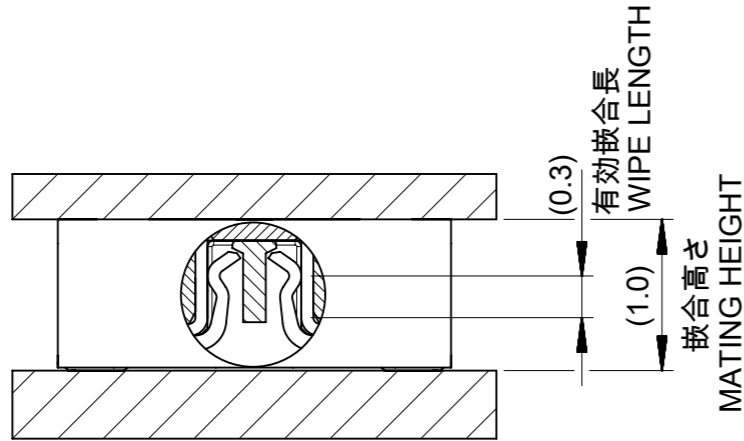
描述	产品编号
0.40mm Pitch SlimStack Board-to-Board Vertical Plugs	<u>502430</u>



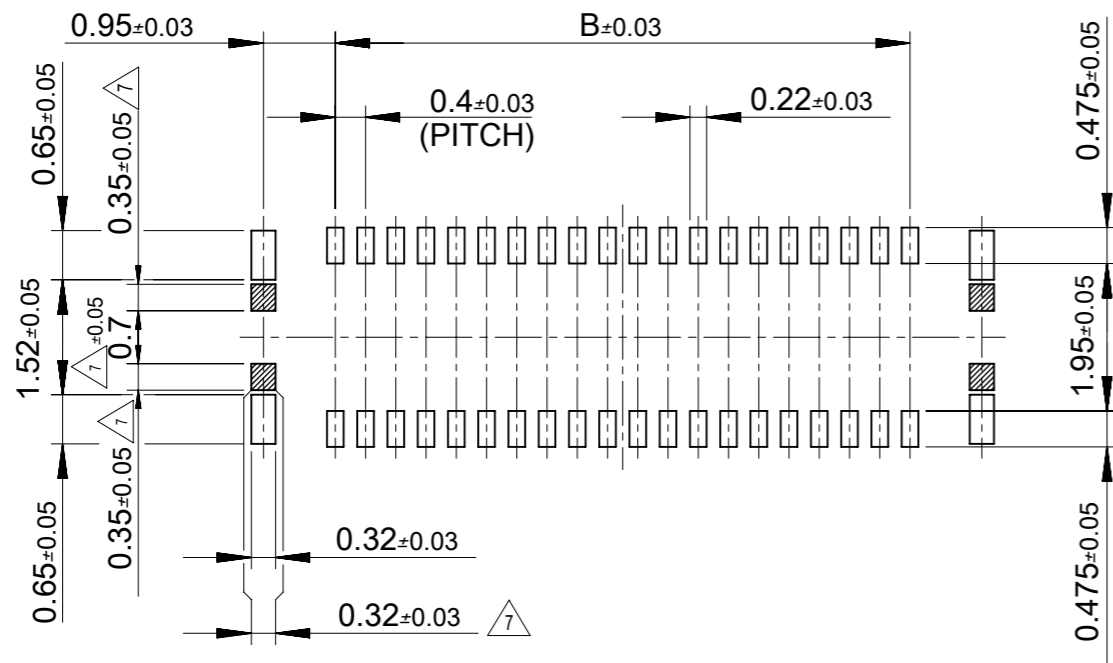
10.0	19.5	17.6	21.1	502426-9030	90
	17.5	15.6	19.1	502426-8030	80
	15.5	13.6	17.1	502426-7030	70
7.0	13.5	11.6	15.1	502426-6030	60
	11.5	9.6	13.1	502426-5030	50
4.0	9.5	7.6	11.1	502426-4030	40
	7.9	6.0	9.5	502426-3230	32
	7.5	5.6	9.1	502426-3030	30
3.4	6.7	4.8	8.3	502426-2630	26
	6.3	4.4	7.9	502426-2430	24
	5.9	4.0	7.5	502426-2230	22
2.4	5.5	3.6	7.1	502426-2030	20
	4.3	2.4	5.9	502426-1430	14
D	C	B	A	EMBOSSSED TAPE PACAKGE ORDER No.	CKT.

CONNECTOR SERIES No. : 502426-\*\*39

THIS DRAWING CONTAINS INFORMATION THAT IS PROPRIETARY TO MOLEX ELECTRONIC TECHNOLOGIES, LLC AND SHOULD NOT BE USED WITHOUT WRITTEN PERMISSION		CURRENT REV DESC: REVISED		<b>molex</b>	
DIMENSION UNITS	SCALE				
mm	10:1			0.4 B-TO-B CONN. HGT=1.0 W=2.6 REC ASSY WITH TAPE	
GENERAL TOLERANCES (UNLESS SPECIFIED)				PRODUCT CUSTOMER DRAWING	
ANGULAR TOL	± °			DOCUMENT NUMBER	
4 PLACES	±	EC NO: 641594		SD-502426-003	
3 PLACES	±	DRWN: TNAKAGAWA01	2020/07/16	DOC TYPE	DOC PART
2 PLACES	±	CHK'D: HSHIMOYAMA	2020/10/16	PSD	001
1 PLACE	±	APPR: SHOSHIKAWA	2020/10/17	REVISION	G
0 PLACES	±	INITIAL REVISION:		SHEET NUMBER	
		DRWN: RTAKEUCHI	2007/12/26	1 OF 2	
		APPR: MSASAO	2007/12/27		
DRAFT WHERE APPLICABLE MUST REMAIN WITHIN DIMENSIONS		THIRD ANGLE PROJECTION	DRAWING	SERIES	MATERIAL NUMBER
			A3-SIZE	502426	CUSTOMER
				SEE TABLE	GENERAL



嵌合断面図 (参考)  
MATED DRAWING (REFERENCE)



P.C. BOARD PATTERN LAYOUT  
(REFERENCE)

注記 NOTE

1. 使用材料 MATERIAL  
ハウジング: 液晶ポリマー (LCP) ガラス充填 UL94V-0 (黒)  
HOUSING: LIQUID CRYSTAL POLYMER (GLASS FILLED) UL94V-0 (COLOR: BLACK)  
ターミナル: リン青銅 (t=0.1)  
TERMINAL: PHOSPHOR BRONZE (t=0.1)  
金具: リン青銅 (t=0.12)  
FITTING NAIL: PHOSPHOR BRONZE (t=0.12)  
吸着テープ: ポリイミド  
VACUUM TAPE: POLYIMIDE

2. メッキ仕様 PLATING  
ターミナル TERMINAL  
コンタクト部: 金メッキ0.1マイクロメートル以上  
CONTACT AREA: GOLD 0.1 MICROMETER MINIMUM.  
テール部: 金メッキ0.05マイクロメートル以上  
TAIL AREA: GOLD 0.05 MICROMETER MINIMUM.  
下地メッキ: ニッケルメッキ 1.0マイクロメートル以上  
UNDER PLATING: NICKEL 1.0 MICROMETER MINIMUM  
※コンタクト部とテール部はニッケルメッキによって分断されている金メッキです。  
DIVIDE INTO PARTS THE GOLD PLATING OF THE CONTACT AND THE TAIL PART BY THE NICKEL PLATING.

- 金具 FITTING NAIL  
フラッシュ金メッキ  
FLASH Au PLATING  
下地メッキ: ニッケルメッキ 1.0マイクロメートル以上  
UNDER PLATING: NICKEL 1.0 MICROMETER MINIMUM

△3 (全極数 / 2) = 偶数の場合に適用。  
APPLY FOR (CIRCUIT/2) = EVEN.

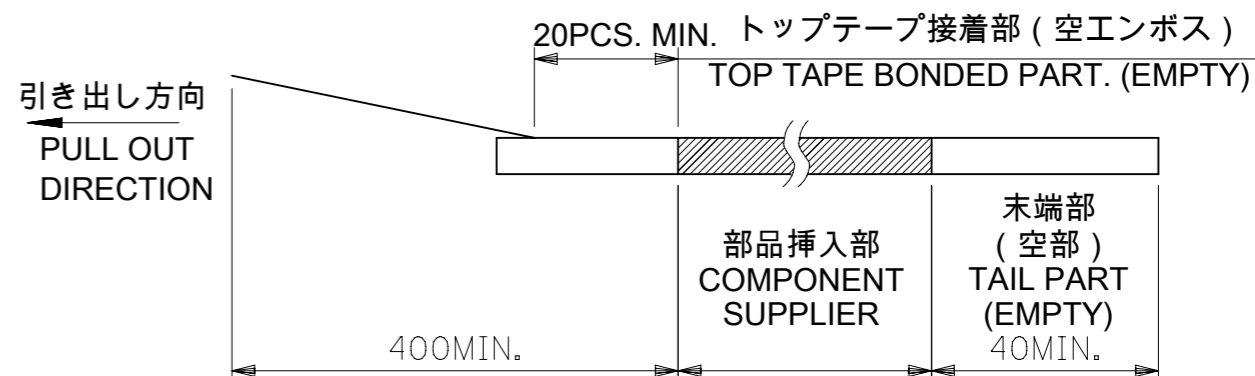
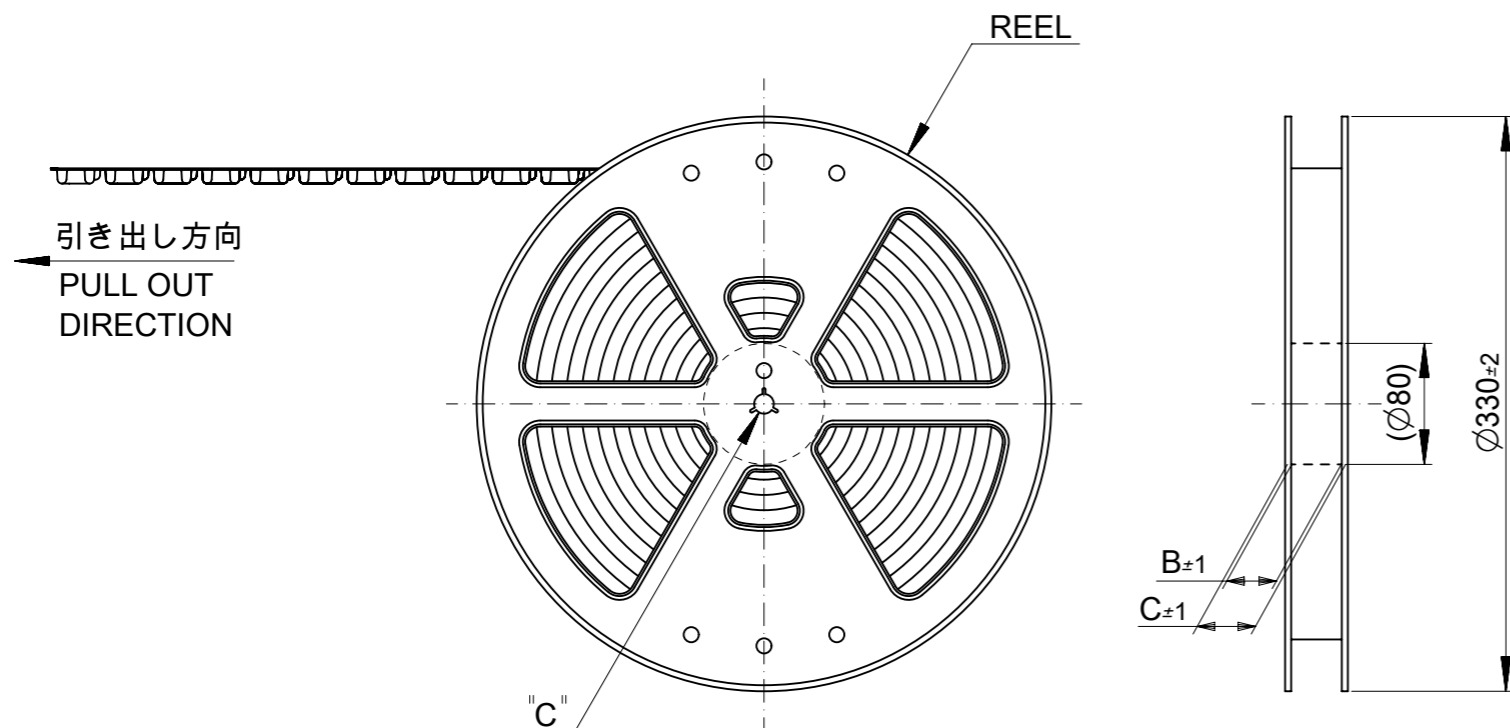
4. 嵌合相手: 502430シリーズ  
MATE WITH: 502430 SERIES.
5. テール平坦度は、0.08以下  
TAIL COPLANARITY TO BE 0.08 MAXIMUM  
テール及び金具の平坦度は、0.1以下  
TAIL AND FITTING NAIL COPLANARITY TO BE 0.1 MAXIMUM.

6. ELV 及び RoHS 適合品  
ELV AND RoHS COMPLIANT.
- △7 斜線部はパターン書込み禁止範囲と半田禁止範囲を示す。  
ただし、斜線部に補強金具と同一配線を配置する場合はレジストを施し、この部分に半田は無きこと。  
NO PATTERN CIRCUIT AND NO SOLDER ALLOWED IN THE SHADED AREA.  
HOWEVER, IF NEEDED TO ADD A TRACE OF THE SAME CIRCUIT, PUT THE SOLDER-RESIST, YET NO SOLDER ALLOWED IN THE AREA.

THIS DRAWING CONTAINS INFORMATION THAT IS PROPRIETARY TO MOLEX ELECTRONIC TECHNOLOGIES, LLC AND SHOULD NOT BE USED WITHOUT WRITTEN PERMISSION		CURRENT REV DESC: REVISED		<b>molex</b>		
DIMENSION UNITS	SCALE					0.4 B-TO-B CONN. HGT=1.0 W=2.6 REC ASSY WITH TAPE
mm	10:1					
GENERAL TOLERANCES (UNLESS SPECIFIED)		EC NO: 641594		PRODUCT CUSTOMER DRAWING		
ANGULAR TOL	± °	DRWN: TNAKAGAWA01 2020/07/16		DOCUMENT NUMBER		
4 PLACES	±	CHK'D: HSHIMOYAMA 2020/10/16		SD-502426-003		
3 PLACES	±	APPR: SHOSHIKAWA 2020/10/17		DOC TYPE DOC PART REVISION		
2 PLACES	±	INITIAL REVISION:		PSD 001 G		
1 PLACE	±	DRWN: RTAKEUCHI 2007/12/26				
0 PLACES	±	APPR: MSASAO 2007/12/27				
DRAFT WHERE APPLICABLE MUST REMAIN WITHIN DIMENSIONS		THIRD ANGLE PROJECTION	DRAWING	SERIES	MATERIAL NUMBER	CUSTOMER
			A3-SIZE	502426	SEE SHEET 1	GENERAL
						SHEET NUMBER
						2 OF 2

注記 NOTES

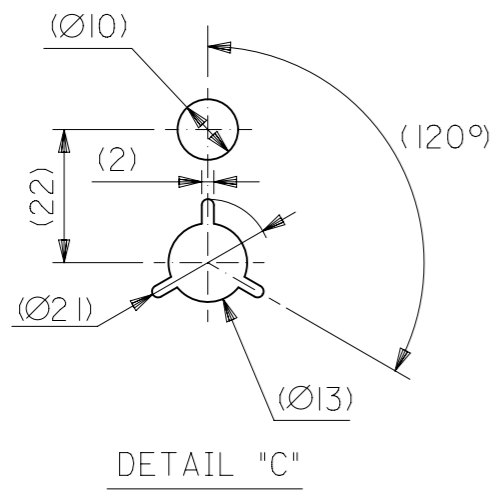
- 製品詳細寸法については製品単体図面を参照下さい。  
DETAIL DIMENSION, SEE PRODUCT DRAWING.
- 梱包数量 : 3000 個 / リール  
NUMBER OF CONNECTORS : 3000PCS/REEL
- リードテープ長さ LEAD TAPE LENGTH



4. 材料 MATERIAL

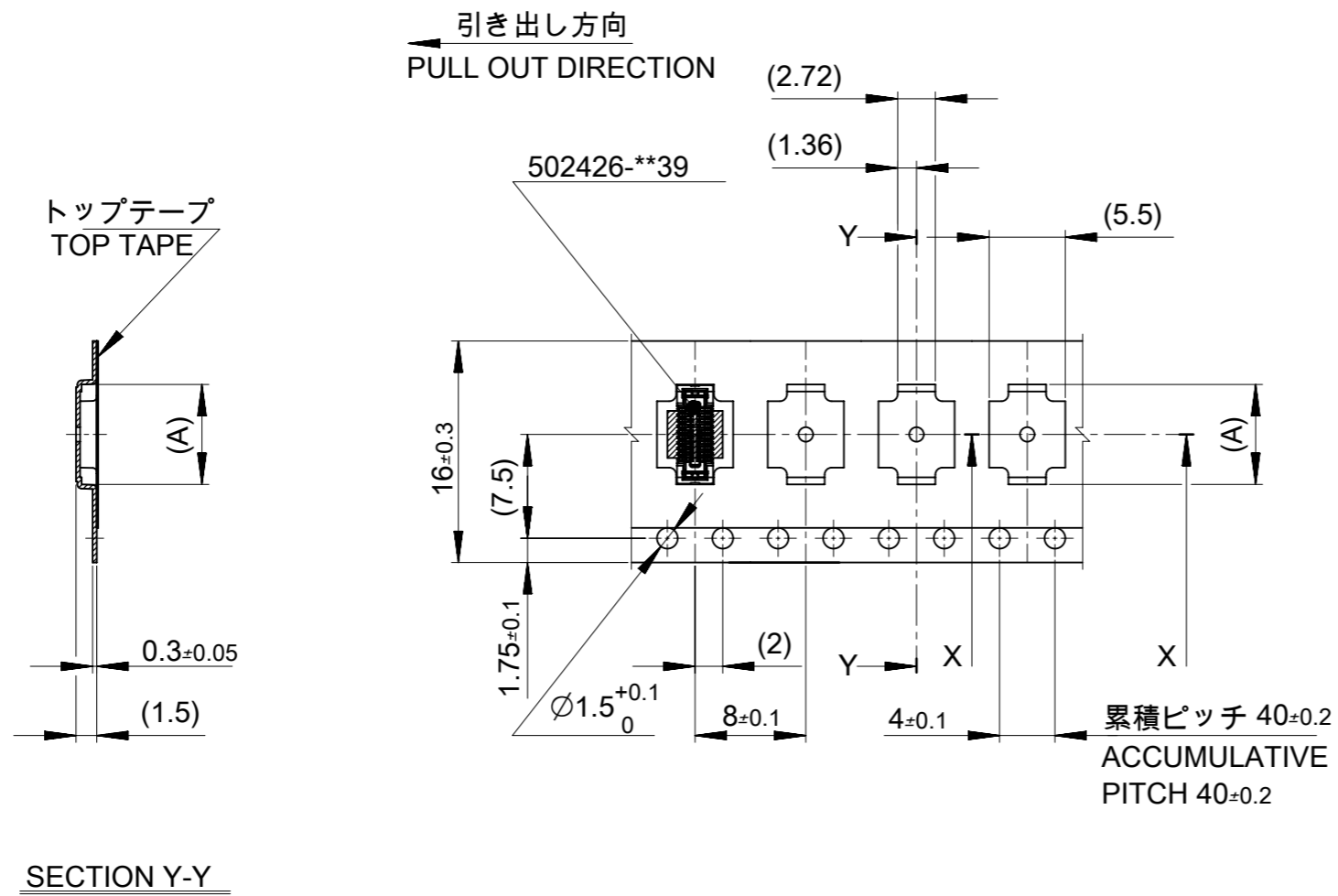
キャリアテープ (CARRIER TAPE) : ポリスチレン (POLYSTYRENE)  
 トップテープ (TOP TAPE) : PET , PE , PEF  
 リール(REEL) : ポリスチレン (PS) <リサイクル材を含む>  
 POLYSTYRENE (PS) <RECYCLE MATERIAL CONTAINED>

5. ELV 及び RoHS適合品  
 ELV AND RoHS COMPLIANT



MODEL NO. 502426-\*\*30

THIS DRAWING CONTAINS INFORMATION THAT IS PROPRIETARY TO MOLEX ELECTRONIC TECHNOLOGIES, LLC AND SHOULD NOT BE USED WITHOUT WRITTEN PERMISSION		CURRENT REV DESC: REVISED		<b>molex</b>	
DIMENSION UNITS	SCALE				
mm	NTS			PRODUCT CUSTOMER DRAWING	
GENERAL TOLERANCES (UNLESS SPECIFIED)		EC NO: 641594		DOCUMENT NUMBER	
ANGULAR TOL	± °	DRWN: TNAKAGAWA01 2020/07/16		SD-502426-004	
4 PLACES	±	CHK'D: HSHIMOYAMA 2020/10/16		DOC TYPE	DOC PART
3 PLACES	±	APPR: SHOSHIKAWA 2020/10/17		PSD	001
2 PLACES	±	INITIAL REVISION:		REVISION	F
1 PLACE	±	DRWN: RTAKEUCHI 2007/12/26			
0 PLACES	±	APPR: MSASAO 2007/12/27			
DRAFT WHERE APPLICABLE MUST REMAIN WITHIN DIMENSIONS		THIRD ANGLE PROJECTION	DRAWING	SERIES	MATERIAL NUMBER
			A3-SIZE	502426	SEE SHEET 2-5
				CUSTOMER	SHEET NUMBER
				GENERAL	1 OF 4

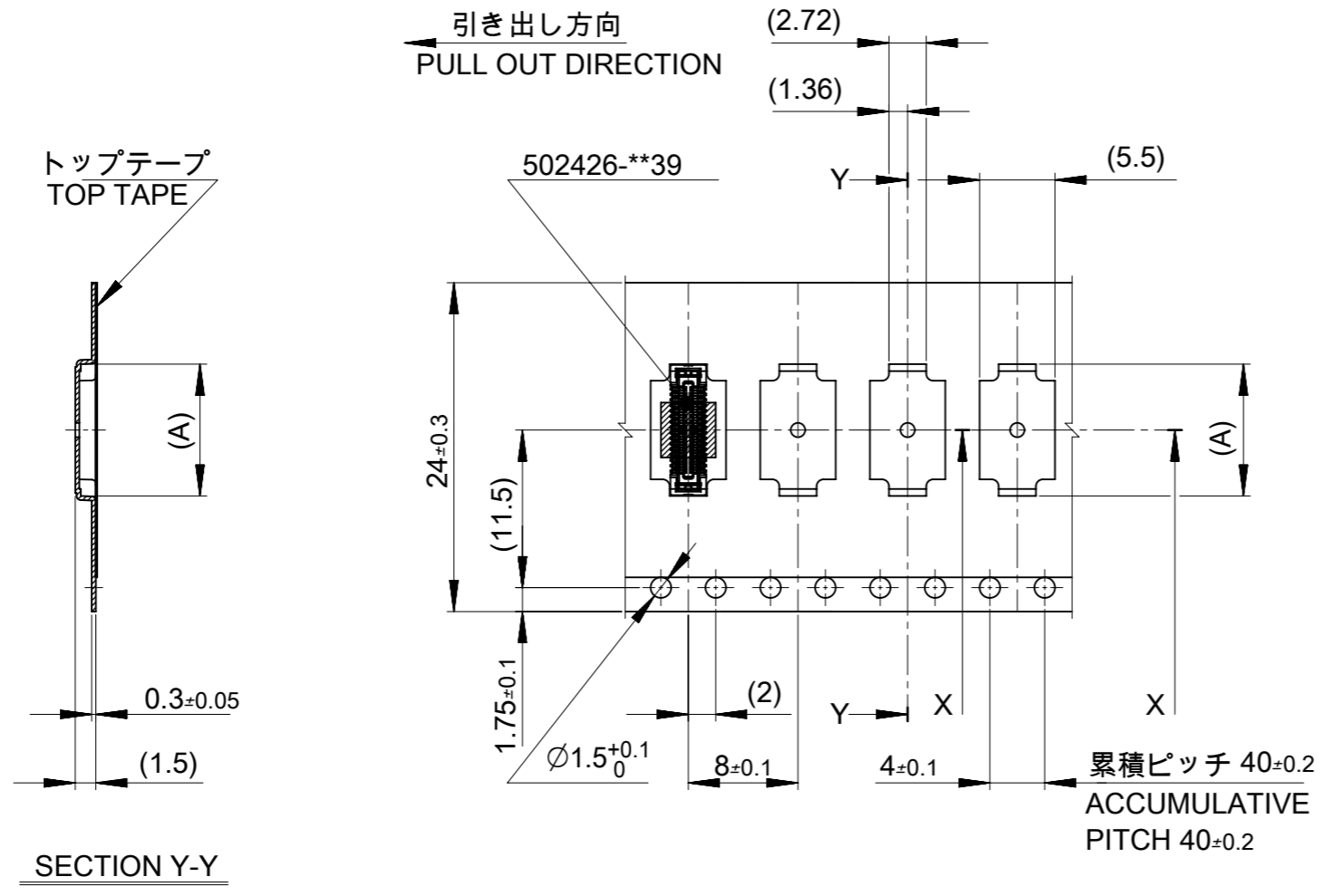


16mm 幅キャリアテープ  
16mm WIDTH CARRIER TAPE

16	21.4	17.4	8.42	502426-2630	26
			8.02	502426-2430	24
			7.62	502426-2230	22
			7.22	502426-2030	20
			6.02	502426-1430	14
キャリアテープ幅 CARRIER TAPE WIDTH	C	B	(A)	MATERIAL No.	CKT.
MODEL No.				502426-**-30	

THIS DRAWING CONTAINS INFORMATION THAT IS PROPRIETARY TO MOLEX ELECTRONIC TECHNOLOGIES, LLC AND SHOULD NOT BE USED WITHOUT WRITTEN PERMISSION

DIMENSION UNITS mm	SCALE NTS	CURRENT REV DESC: REVISED		<b>molex</b>		
GENERAL TOLERANCES (UNLESS SPECIFIED)		EC NO: 641594				
ANGULAR TOL ±	°	DRWN: TNAKAGAWA01 2020/07/16		PRODUCT CUSTOMER DRAWING		
4 PLACES ±		CHK'D: HSHIMOYAMA 2020/10/16		DOCUMENT NUMBER		
3 PLACES ±		APPR: SHOSHIKAWA 2020/10/17		SD-502426-004		
2 PLACES ±		INITIAL REVISION:		DOC TYPE	DOC PART	REVISION
1 PLACE ±		DRWN: RTAKEUCHI 2007/12/26		PSD	001	F
0 PLACES ±		APPR: MSASAO 2007/12/27		SHEET NUMBER		
DRAFT WHERE APPLICABLE MUST REMAIN WITHIN DIMENSIONS	THIRD ANGLE PROJECTION	DRAWING	SERIES	MATERIAL NUMBER	CUSTOMER	
		A3-SIZE	502426	SEE TABLE	GENERAL	2 OF 4



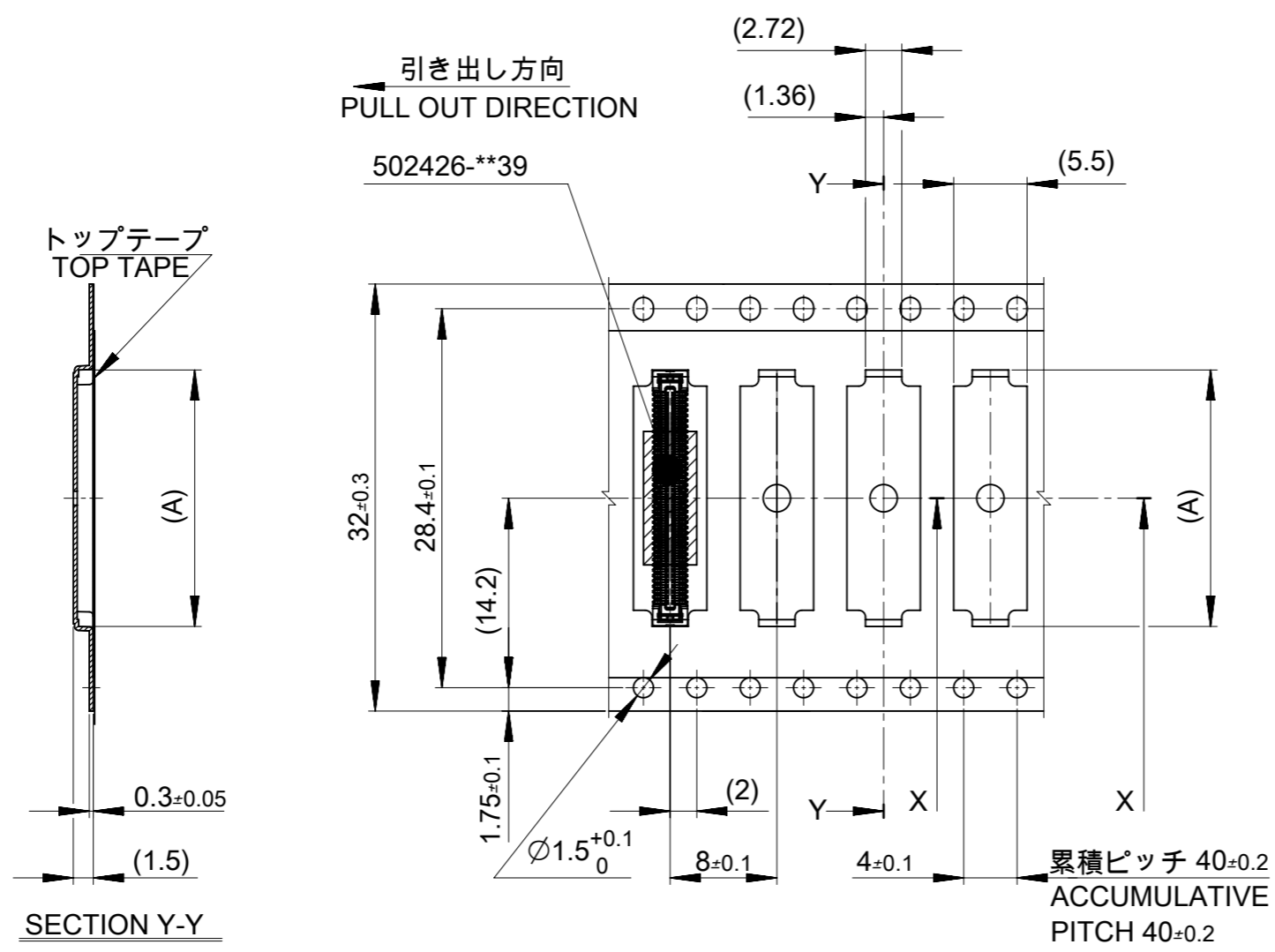
24mm 幅キャリアテープ  
24mm WIDTH CARRIER TAPE

24	29.4	25.4	15.22	502426-6030	60		
			13.22	502426-5030	50		
			11.22	502426-4030	40		
			9.62	502426-3230	32		
			9.22	502426-3030	30		
キャリアテープ幅 CARRIER TAPE WIDTH			C	B	(A)	MATERIAL No.	CKT.
MODEL No.				502426-**30			

THIS DRAWING CONTAINS INFORMATION THAT IS PROPRIETARY TO MOLEX ELECTRONIC TECHNOLOGIES, LLC AND SHOULD NOT BE USED WITHOUT WRITTEN PERMISSION

DIMENSION UNITS mm	SCALE NTS	CURRENT REV DESC: REVISED		<b>molex</b>		
GENERAL TOLERANCES (UNLESS SPECIFIED)		EC NO: 641594				
ANGULAR TOL	± °	DRWN: TNAKAGAWA01 2020/07/16		PRODUCT CUSTOMER DRAWING		
4 PLACES	±	CHK'D: HSHIMUYAMA 2020/10/16		DOCUMENT NUMBER		
3 PLACES	±	APPR: SHOSHIKAWA 2020/10/17		SD-502426-004		
2 PLACES	±	INITIAL REVISION:		DOC TYPE	DOC PART	REVISION
1 PLACE	±	DRWN: RTAKEUCHI 2007/12/26		PSD	001	F
0 PLACES	±	APPR: MSASAO 2007/12/27		SHEET NUMBER		
DRAFT WHERE APPLICABLE MUST REMAIN WITHIN DIMENSIONS		THIRD ANGLE PROJECTION	DRAWING	SERIES	MATERIAL NUMBER	CUSTOMER
			A3-SIZE	502426	SEE TABLE	GENERAL





32mm 幅キャリアテープ  
32mm WIDTH CARRIER TAPE

32	37.4	33.4	21.22	502426-9030	90
			19.22	502426-8030	80
			17.22	502426-7030	70
キャリアテープ幅 CARRIER TAPE WIDTH	C	B	(A)	MATERIAL No.	CKT.
MODEL No.				502426-***30	

THIS DRAWING CONTAINS INFORMATION THAT IS PROPRIETARY TO MOLEX ELECTRONIC TECHNOLOGIES, LLC AND SHOULD NOT BE USED WITHOUT WRITTEN PERMISSION

DIMENSION UNITS mm	SCALE NTS	CURRENT REV DESC: REVISED		<b>molex</b>		
GENERAL TOLERANCES (UNLESS SPECIFIED)		EC NO: 641594				
ANGULAR TOL	± °	DRWN: TNAKAGAWA01 2020/07/16		PRODUCT CUSTOMER DRAWING		
4 PLACES	±	CHK'D: HSHIMYOYAMA 2020/10/16		DOCUMENT NUMBER		
3 PLACES	±	APPR: SHOSHIKAWA 2020/10/17		SD-502426-004		
2 PLACES	±	INITIAL REVISION:		DOC TYPE	DOC PART	REVISION
1 PLACE	±	DRWN: RTAKEUCHI 2007/12/26		PSD	001	F
0 PLACES	±	APPR: MSASAO 2007/12/27		SHEET NUMBER		
DRAFT WHERE APPLICABLE MUST REMAIN WITHIN DIMENSIONS		THIRD ANGLE PROJECTION	DRAWING	SERIES	MATERIAL NUMBER	CUSTOMER
			A3-SIZE	502426	SEE TABLE	GENERAL