



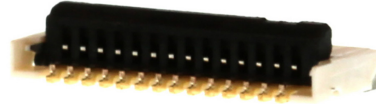
产品编号 : [5034801400](#)

**Product Description** : Easy-On FFC/FPC Connector, 0.50mm Pitch, FBH1 Series, Right-Angle, Dual Contact, 1.00mm Height, 14 Circuits, Gold over Nickel Plating

系列号 : 503480

状态 : Active

**Product Category** : FFC / FPC Connectors



---

## 文件和资源

### 图纸

[图纸 5034801400\\_sd.pdf](#)

### 3D 模型和设计文件

[3D模型 5034801400\\_stp.zip](#)

### 规格

[包装规格 SPK-503480-001-001.pdf](#)

[产品规格 PS-503480-001-001.pdf](#)

---

## 产物环境合规

### 合规

GADSL/IMDS	Not Relevant
China RoHS	
EU ELV	Not Relevant
Low-Halogen Status	Low-Halogen per IEC 61249-2-21
REACH SVHC	Not Contained per D(2023)3788-DC (14 Jun 2023)
EU RoHS	Compliant per EU 2015/863

### 多部分产品合规性声明

- Eu RoHS
- REACH SVHC
- Low-Halogen

### 多部分行业合规性文件

- IPC 1752A Class C
- IPC 1752A Class D

- Molex Product Compliance Declaration

- IEC-62474

- chemSHERPA (xml)

欧盟 RoHS 合格证书

---

## 产品详情

### 常规

状态	活动
类别	FFC / FPC Connectors
系列	503480
说明	Easy-On FFC/FPC Connector, 0.50mm Pitch, FBH1 Series, Right-Angle, Dual Contact, 1.00mm Height, 14 Circuits, Gold over Nickel Plating
产品系列	FBH1
个评论	Black Actuator
产品系列	Easy-On FFC FPC Connectors
产品名称	Easy-On
UPC	884982040878

### 机构

UL	E29179
----	--------

### 电气

每触点最大电流	0.5A
电压 - 最大	50V

### 物理

驱动器类型	Back Flip
回路数 (已载入)	14
颜色-树脂	Natural (White)
接触部位	Dual
耐用性(插拔次数) - 最多次数	10
阻燃性	94V-0
插配长度	1.00mm

材料 - 金属	Phosphor Bronze
材料 - 接合部位电镀	金牌
材料 - 终端电镀	金牌
材料 - 树脂	Liquid Crystal Polymer
净重	50.801/mg
方向	Right Angle
包装形式	Embossed Tape on Reel
PCB 定位器	否
PCB安装	Surface Mount
PCB 保持力	是
间距 - 插配接口	0.50mm
PCB 极性	是
可堆叠的	否
运行温度范围	-40° to +85° C
导线/电缆型号	FFC/FPC

## 进程

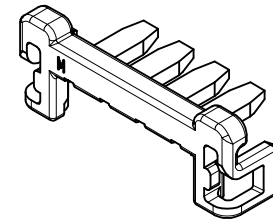
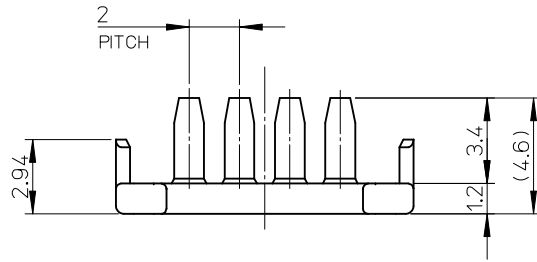
最长持续时间	3
无铅	REFLOW
最大周期	2
最高温度	250

---

## 可配插/可连接使用的产品

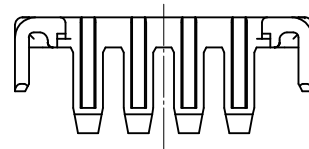
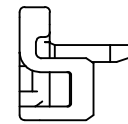
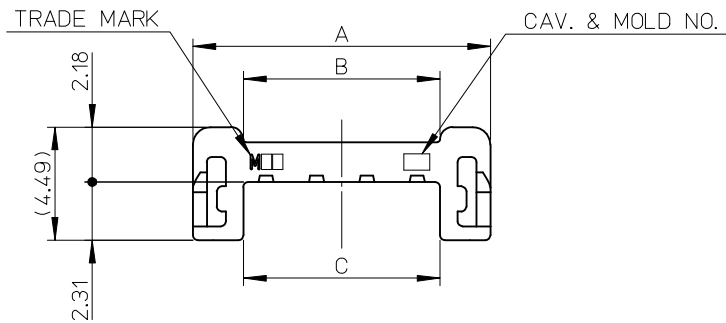
### 可配插部件

描述	产品编号
0.50mm Pitch Premo-Flex FFC Jumpers	<u>15020</u>
0.50mm Pitch Premo-Flex FFC Jumpers	<u>15120</u>



NOTES

1. 材料:PBT (ガラス入り)  
PBT (G.F.)
2. 適合ハウジング:505151シリーズ  
APPLICABLE HOUSING: 505151 SERIES
3. 適合ターミナル:505153シリーズ  
APPLICABLE TERMINAL: 505153 SERIES
4. ELV及びRoHS適合  
ELV AND RoHS COMPLIANT



29.8	10.4	33.8	5051521500	15
27.8	10.4	31.8	5051521400	14
25.8	10.4	29.8	5051521300	13
23.8	10.4	27.8	5051521200	12
21.8	10.4	25.8	5051521100	11
19.8	10.4	23.8	5051521000	10
17.8	10.4	21.8	5051520900	9
15.8	10.4	19.8	5051520800	8
13.8	13.8	17.8	5051520700	7
11.8	11.8	15.8	5051520600	6
9.8	9.8	13.8	5051520500	5
7.8	7.8	11.8	5051520400	4
5.8	5.8	9.8	5051520300	3
3.8	3.8	7.8	5051520200	2
C	B	A	MATERIAL NO.	CKT NO.

RELEASED EC NO.: J2015-0035 DRWN:MIKEDA01 2014/07/08 CHKD:KASAKAWA 2014/07/11 APPR:NUKITA 2014/07/15	GENERAL TOLERANCES (UNLESS SPECIFIED)		DIMENSION STYLE MM ONLY		SCALE 5:1	DESIGN UNITS METRIC	THIRD ANGLE PROJECTION	
	10 UNDER	±0.2	DRAWN BY MIKEDA01	DATE 2014/03/03	TITLE 2.0MM PITCH W/B CONN. RETAINER			
	10 OVER 30 UNDER	±0.25	CHECKED BY KASAKAWA	DATE 2014/03/04				
	30 OVER	±0.3	APPROVED BY NUKITA	DATE 2014/03/28	<b>molex</b> DOCUMENT NO. SD-505152-001 SHEET NO. 1 OF 1			
ANGULAR ±3 °		MATERIAL NO. SEE CHART						
DRAFT WHERE APPLICABLE MUST REMAIN WITHIN DIMENSIONS		SIZE A3		THIS DRAWING CONTAINS INFORMATION THAT IS PROPRIETARY TO MOLEX INCORPORATED AND SHOULD NOT BE USED WITHOUT WRITTEN PERMISSION				