



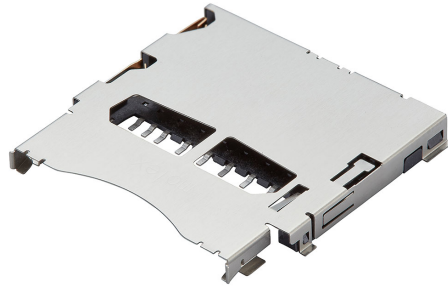
产品编号 : 5035000991

**Product Description** : 2.50mm Pitch SD Memory Card Connector, 2.95mm Height, Normal Mount, Push-Push, with Detect, Protect and Anti-Card-Fly-Out Features

系列号 : 503500

状态 : New Business Not Supported

**Product Category** : Memory / SIM Card Connectors




---

## 文件和资源

---

### 产物环境合规

#### 合规

GADSL/IMDS	Not Relevant
China RoHS	
EU ELV	Not Relevant
Low-Halogen Status	Low-Halogen per IEC 61249-2-21
REACH SVHC	Not Contained per D(2023)3788-DC (14 Jun 2023)
EU RoHS	Compliant per EU 2015/863

#### 多部分产品合规性声明

- Eu RoHS
- REACH SVHC
- Low-Halogen

#### 多部分行业合规性文件

- IPC 1752A Class C
- IPC 1752A Class D
- Molex Product Compliance Declaration
- IEC-62474
- chemSHERPA (xml)

#### 欧盟 RoHS 合格证书

---

## 产品详情

#### 常规

状态	New Business Not Supported
类别	Memory / SIM Card Connectors
系列	503500
说明	2.50mm Pitch SD Memory Card Connector, 2.95mm Height, Normal Mount, Push-Push, with Detect, Protect and Anti-Card-Fly-Out Features
产品系列	SD and SIM Memory Card Sockets
产品名称	SD Card
类型	Push-Push
UPC	884982101593

## 电气

每触点最大电流	0.5A
屏蔽	是
电压 - 最大	50V AC (RMS)/DC

## 物理

卡片探测开关	打开
插卡位置	Front
回路数 (已载入)	9
耐用性(插拔次数) - 最多次数	10000
弹出器按钮端	不适用
材料 - 触头	Copper Alloy
材料 - 接合部位电镀	金牌
材料 - 终端电镀	Tin
材料 - 外壳	Stainless Steel
净重	1547.679/mg
包装形式	Embossed Tape on Reel
PCB 定位器	否
PCB 保持力	是
间距 - 插配接口	2.50mm
运行温度范围	-25° to +85° C
终端界面类型	Surface Mount

---

This document was generated on Feb 28, 2024