

This document was generated on 02/08/2022

**PLEASE CHECK WWW.MOLEX.COM FOR LATEST PART INFORMATION**

**Part Number:** **0050841035**  
**Status:** **Active**  
**Overview:** MLX Power Connectors  
**Description:** 2.13mm Diameter MLX Power Crimp Housing Plug, 3 Circuits, Natural

**Documents:**

<a href="#">Drawing (PDF)</a>	<a href="#">Packaging Specification PK-42021-XX-001 (PDF)</a>
<a href="#">3D Model</a>	<a href="#">Test Summary TS-42022-0001-001 (PDF)</a>
<a href="#">3D Model (PDF)</a>	<a href="#">Datasheet (PDF)</a>
<a href="#">Product Specification PS-42022-0001-001 (PDF)</a>	<a href="#">RoHS Certificate of Compliance (PDF)</a>

**Agency Certification**

CSA	LR19980
UL	E29179

**General**

Product Family	Crimp Housings
Series	<u>42021</u>
Application	Power, Wire-to-Board, Wire-to-Wire
Comments	Glow Wire Equivalent Part Number <u>366430003</u> . Current – Maximum per contact 20A if used with <u>36663</u> and <u>36664</u> terminal

Overview

Product Name	<u>MLX Power Connectors</u>
UPC	MLX 800754385565

**Physical**

Circuits (maximum)	3
Circuits Detail	3
Color - Resin	Natural
Flammability	94V-0
Gender	Plug
Glow-Wire Capable	No
Keying to Mating Part	None
Lock to Mating Part	Yes
Material - Resin	Nylon
Net Weight	2.660/g
Number of Rows	1
Packaging Type	Bag
Panel Mount	No
Pitch - Mating Interface	6.35mm
Polarized to Mating Part	Yes
Stackable	No
Temperature Range - Operating	-55° to +105°C

**Electrical**

Current - Maximum per Contact	13.5A, 20.0A
-------------------------------	--------------

**Solder Process Data**

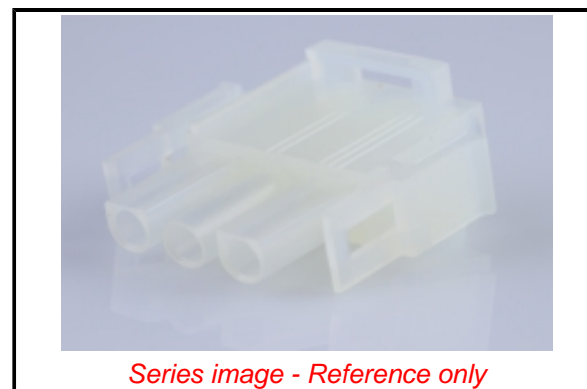
Lead-freeProcess Capability	N/A
-----------------------------	-----

**Material Info**

Engineering Number	42021-3C
--------------------	----------

**Reference - Drawing Numbers**

Packaging Specification	PK-42021-XX-001
Product Specification	PS-42022-0001-001
Sales Drawing	420210000-000, SD-42021-XX-001



Series image - Reference only

**EU ELV**

**Not Relevant**

**EU RoHS**

**Compliant**

**REACH SVHC**

Not Contained Per -  
D(2021)4569-DC (8  
July 2021)

**Halogen-Free**

**Status**

**Low-Halogen**

For more information, please visit [Contact US](#)

China ROHS

ELV

RoHS Phthalates

Green Image

Not Relevant

Not Contained

**Search Parts in this Series**

42021 Series

**Mates With**

MLX Power Connector Header 42002 . MLX Pin and Socket Receptacle 42022 . MLX Power Connector Header 43255

**Use With**

MLX Crimp Terminal 36663 , 36664 , 42023 , 42024 . MLX Male Pre-Crimped Lead 797582029 , 797582030 . MLX Female Pre-Crimped Lead 797582031 , 797582032



产品编号 : [50841035](#)

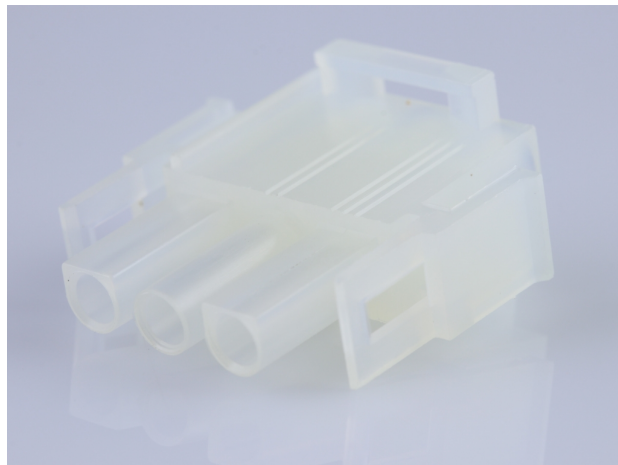
Product Description : 2.13mm Diameter MLX Power Crimp Housing Plug, 3 Circuits, Natural

系列号 : 42021

状态 : Active

Product Category : Connector Housings

工程编号 : 42021-3C



---

## 文件和资源

### 图纸

[图纸 050841035\\_sd.pdf](#)

[包装设计图 PK-42021-XX-001.pdf](#)

### 3D 模型和设计文件

[3D模型 050841035\\_stp.zip](#)

### 规格


[产品规格 PS-42022-0001-001.pdf](#)

[测试摘要 TS-42022-0001-001.pdf](#)

---

## 产物环境合规

### 合规

GADSL/IMDS	Not Relevant
China RoHS	
EU ELV	Not Relevant
Low-Halogen Status	Low-Halogen per IEC 61249-2-21
REACH SVHC	Contains melamine per D(2023)3788-DC (14 Jun 2023)
EU RoHS	Compliant per EU 2015/863

### 多部分产品合规性声明

- Eu RoHS

- REACH SVHC

- Low-Halogen

多部分行业合规性文件

- IPC 1752A Class C

- IPC 1752A Class D

- Molex Product Compliance Declaration

- IEC-62474

- chemSHERPA (xml)

欧盟 RoHS 合格证书

---

## 产品详情

### 常规

状态	活动
类别	Connector Housings
系列	42021
说明	2.13mm Diameter MLX Power Crimp Housing Plug, 3 Circuits, Natural
应用	Power, Wire-to-Board, Wire-to-Wire
个评论	Glow Wire Equivalent Part Number 366430003; Maximum current per contact 20A if used with 36663 and 36664 terminal
产品系列	MLX Power Connectors
产品名称	MLX
UPC	800754385565

### 机构

CSA	LR19980
UL	E29179

### 电气

每触点最大电流	13.5A, 20.0A
---------	--------------

### 物理

电路详图	3
电路数 (最多)	3
颜色-树脂	Natural

阻燃性	94V-0
性别	Plug
符合灼热丝规范	否
插接极性	无
锁定插接部位	是
材料 - 树脂	Nylon
净重	2.660/g
行数	1
包装形式	Bag
面板安装式	否
间距 - 插配接口	6.35mm
有极性的插配件	是
可堆叠的	否
运行温度范围	-55° to +105° C

## 进程

无铅	不适用
----	-----

## 可配插/可连接使用的产品

### 可配插部件

描述	产品编号
6.35mm Pitch MLX Vertical Power Connector Headers	<u>42002</u>
2.13mm Diameter MLX Pin and Socket Receptacles	<u>42022</u>
MLX Vertical Power Connector Headers	<u>43255</u>

### 可连接使用部件

描述	产品编号
Pre-Crimped Lead MLX Male-to-MLX Male, Tin (Sn) Plating, 150.00mm Length, 18 AWG, Black	<u><a href="/content/molex/molex-dot-com/cn/zh/products/product-page.html/797582029.html">/content/molex/molex-dot-com/cn/zh/products/product-page.html/797582029.html</a></u>
Pre-Crimped Lead MLX Male-to-MLX Male, Tin (Sn) Plating, 300.00mm Length, 18 AWG, Black	<u><a href="/content/molex/molex-dot-com/cn/zh/products/product-page.html/797582030.html">/content/molex/molex-dot-com/cn/zh/products/product-page.html/797582030.html</a></u>

Pre-Crimped Lead MLX Female-to-MLX Female, Tin (Sn) Plating, 150.00mm Length, 18 AWG, Black	<a href="/content/molex/molex-dot-com/cn/zh/products/product-page.html/797582031.html">/content/molex/molex-dot-com/cn/zh/products/product-page.html/797582031.html</a>
Pre-Crimped Lead MLX Female-to-MLX Female, Tin (Sn) Plating, 300.00mm Length, 18 AWG, Black	<a href="/content/molex/molex-dot-com/cn/zh/products/product-page.html/797582032.html">/content/molex/molex-dot-com/cn/zh/products/product-page.html/797582032.html</a>
MLX Crimp Terminals	<a href="#">36663</a>
MLX Female Terminals	<a href="#">36664</a>
MLX Male Crimp Terminals	<a href="#">42023</a>
MLX Female Crimp Terminals	<a href="#">42024</a>