



产品编号：[510650300](#)

Product Description：2.00mm Pitch, Micro-Latch Receptacle Crimp Housing, Single Row, 3 Circuits, Natural

系列号：51065

状态：Active

Product Category：Connector Housings



文件和资源

图纸

[图纸 510650300_sd.pdf](#)

3D 模型和设计文件

[3D模型 510650300_stp.zip](#)

规格

[包装规格 SPK-51065-001-001.pdf](#)

[产品规格 510650001-PS-000.pdf](#)

[产品规格 510650000-PS-000.pdf](#)

[产品规格 510651000-PS-000.pdf](#)

[产品规格 510651001-PS-000.pdf](#)

产物环境合规

合规

GADSL/IMDS	Not Relevant
China RoHS	
EU ELV	Compliant per 2000/53/EC
Low-Halogen Status	Not Low-Halogen per IEC 61249-2-21
REACH SVHC	Not Contained per D(2023)3788-DC (14 Jun 2023)
EU RoHS	Compliant per EU 2015/863

多部分产品合规性声明

- Eu RoHS
- REACH SVHC
- Low-Halogen

多部分行业合规性文件

- IPC 1752A Class C
- IPC 1752A Class D
- Molex Product Compliance Declaration
- IEC-62474
- chemSHERPA (xml)

欧盟 RoHS 合格证书

产品详情

常规

状态	活动
类别	Connector Housings
系列	51065
说明	2.00mm Pitch, Micro-Latch Receptacle Crimp Housing, Single Row, 3 Circuits, Natural
应用	Signal, Wire-to-Board
产品系列	Micro-Latch Wire-to-Board Connector System
产品名称	Micro-Latch
UPC	800753574243

机构

CSA	LR19980
UL	E29179

物理

电路数（最多）	3
颜色-树脂	Natural
阻燃性	94V-0
性别	Receptacle
符合灼热丝规范	否
锁定插接部位	是
材料 - 树脂	Polyester
净重	90.900/mg
行数	1
包装形式	Bag

面板安装式	否
间距 - 插配接口	2.00mm
可堆叠的	否
运行温度范围	-55° to +105° C

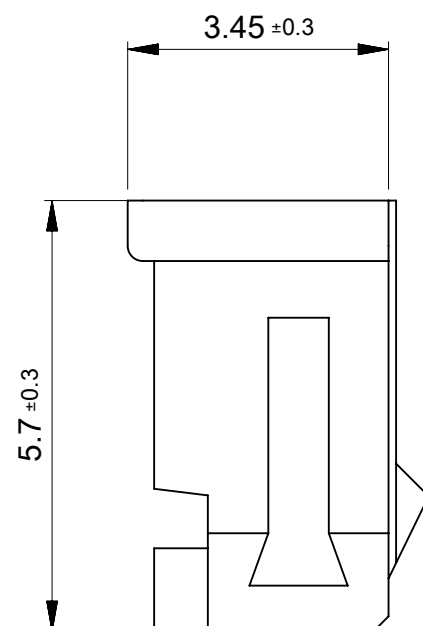
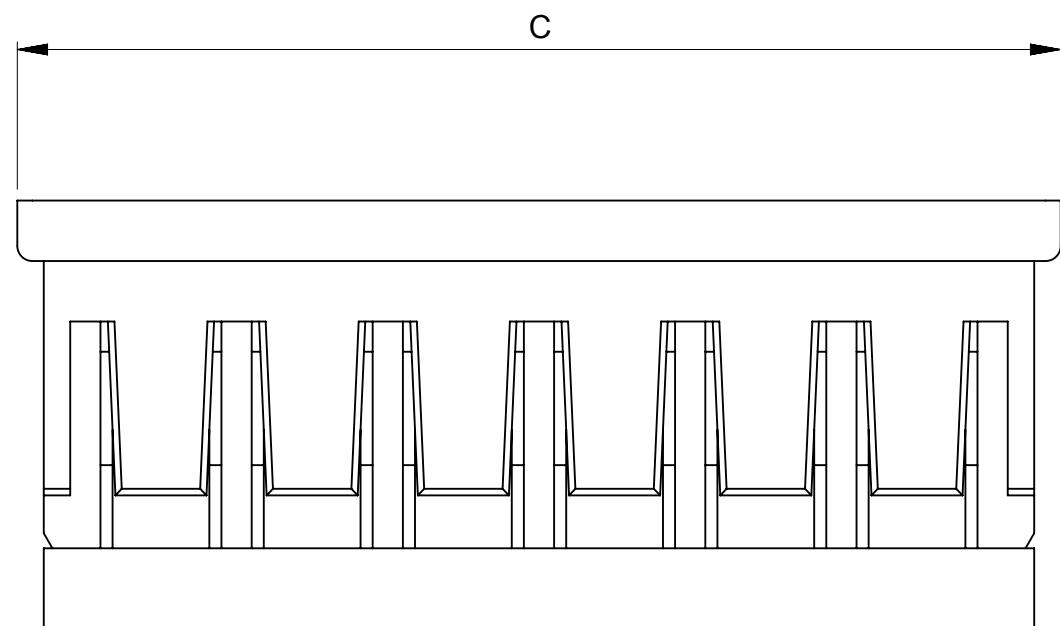
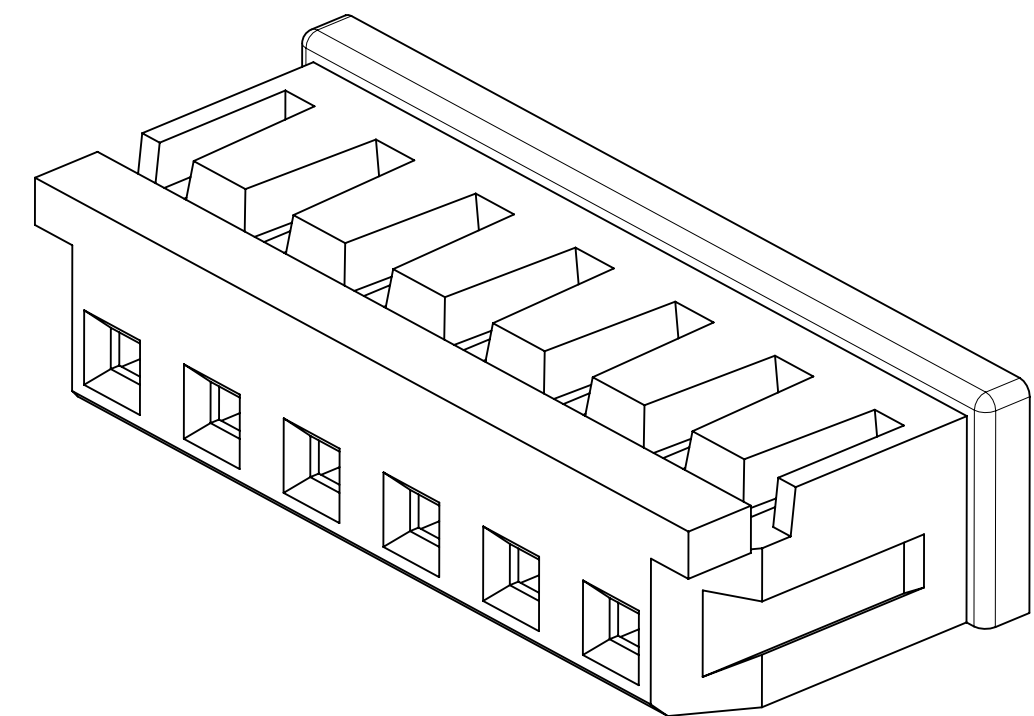
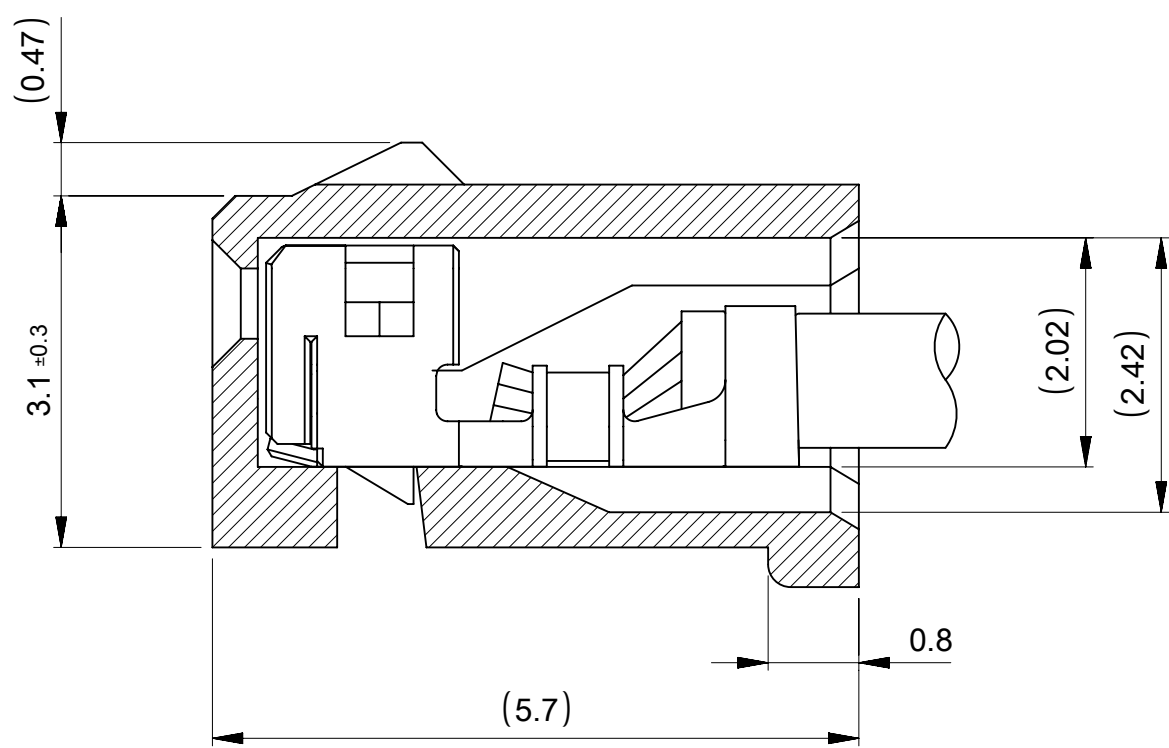
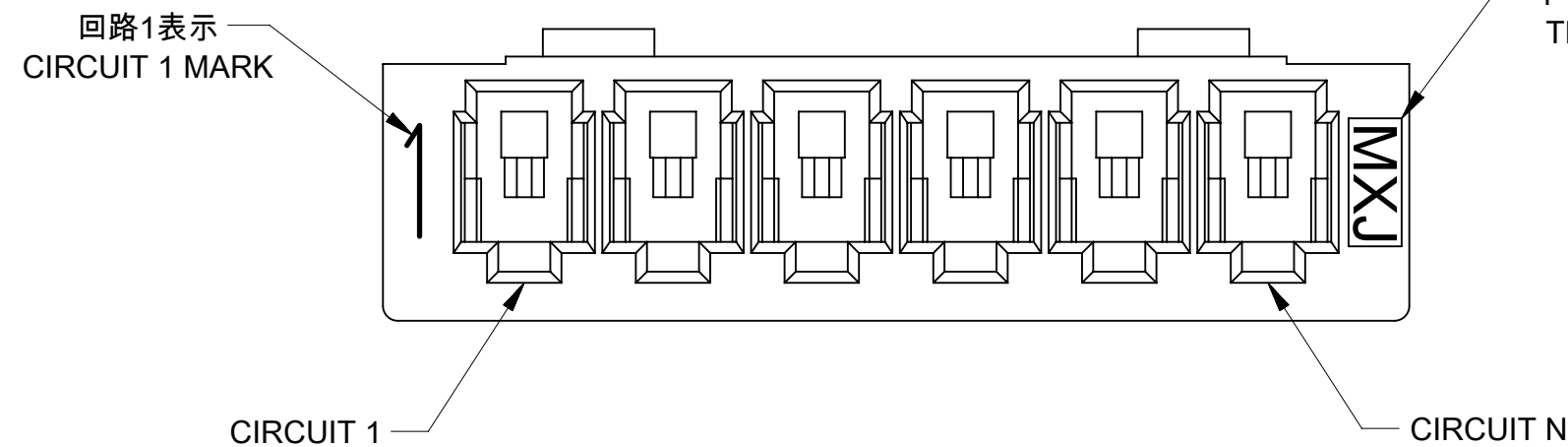
可配插/可连接使用的产品

可配插部件

描述	产品编号
Micro-Latch Vertical Single Row Headers	<u>53253</u>
Micro-Latch Vertical Single Row Headers	<u>502603</u>
Micro-Latch Right-Angle Single Row Headers	<u>53254</u>

可连接使用部件

描述	产品编号
Micro-Latch Female Crimp Terminals	<u>50212</u>
Micro-Latch Female Crimp Terminals	<u>50372</u>
Micro-Latch Female Terminals	<u>59354</u>

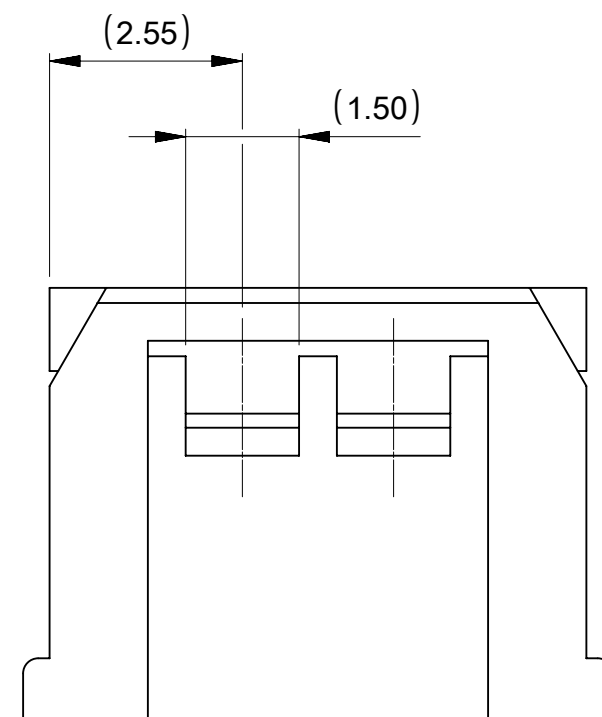
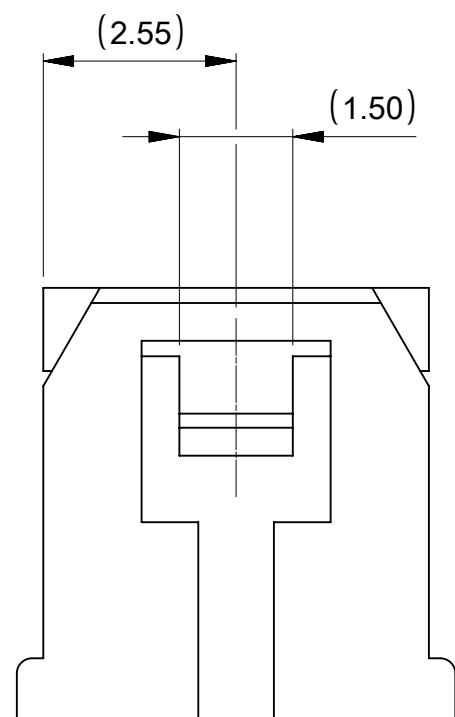
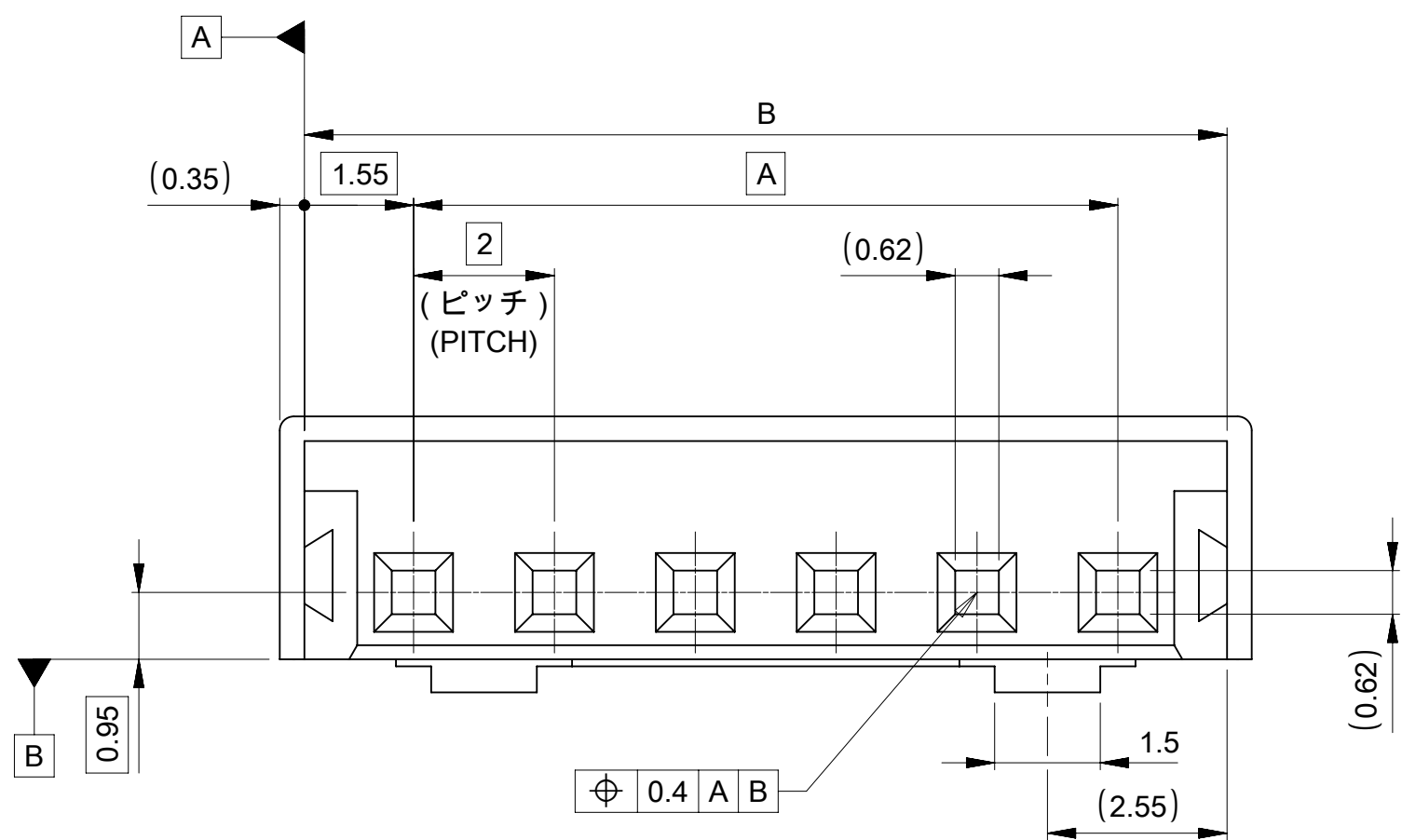


NOTES

- 1 材質 : TABLE 1
MATERIAL : TABLE 1
- 2 適合製品及び各種仕様書はSHEET 2 をご参考ください。
PLEASE REFER TO SHEET 2 FOR APPLICABLE PRODUCTS AND VARIOUS SPECIFICATIONS.
- 3 トレードマーク : Mプラス1~2文字のアルファベットにて構成。
但し、"J"はJAPANを示す。(例: MXJ)
TRADE MARK: FORMED BY M AND THE NEXT 1~2 MORE LETTERS OF ALPHABET.
WHEN "J" MEANS JAPAN. (e.g. MXJ)
- 4 オーダー番号 ORDER NO
51065**0*

色番号 COLOR CODE	
0	ナチュラル(白) NATURAL (WHITE)
1	黒 BLACK

極数
CKT SIZE



NOM	TOL	NOM	TOL	NOM	色 COLOR	極数 CIRCUITS
31.8	±0.30	31.1	±0.30	28	//	510651500 15
29.8		29.1		26		510651400 14
27.8		27.1		24		510651300 13
25.8		25.1		22		510651200 12
23.8		23.1		20		510651100 11
21.8		21.1		18		510651000 10
19.8	±0.25	19.1	±0.25	16		510650900 9
17.8		17.1		14		510650800 8
15.8		15.1		12		510650700 7
13.8		13.1		10		510650600 6
11.8		11.1		8	510650500 5	
9.8		9.1		6	510650400 4	
7.8	±0.20	7.1	±0.20	4	510650300 3	
5.8		5.1		2	510650201 510650200 2	
					黒 BLACK	ナチュラル(白) NATURAL (WHITE)
					色 COLOR	
					4 オーダー番号 ORDER NO	
					梱包形態: ポリ袋 PACKAGING: POLYBAG	

1 TABLE 1

部品 PART	材質 MATERIAL
ハウジング HOUSING	POLYESTER (PBT), UL94V-0 COLOR: SEE CHART

THIS DRAWING CONTAINS INFORMATION THAT IS PROPRIETARY TO MOLEX ELECTRONIC TECHNOLOGIES, LLC AND SHOULD NOT BE USED WITHOUT WRITTEN PERMISSION

DIMENSION UNITS	SCALE	CURRENT REV DESC: REVISED
mm	NTS	
GENERAL TOLERANCES (UNLESS SPECIFIED)		
ANGULAR TOL	± 3.0°	
4 PLACES	± 0.2	EC NO: 660008
3 PLACES	± 0.2	DRWN: HHUSSIN 2021/05/31
2 PLACES	± 0.2	CHK'D: SAKIYAMA 2021/06/02
1 PLACE	± 0.2	APPR: KOMURAKAMI 2021/06/02
0 PLACES	± 0.2	INITIAL REVISION:
		DRWN: HHUSSIN 2019/10/23
		APPR: KOMURAKAMI 2020/05/01
DRAFT WHERE APPLICABLE MUST REMAIN WITHIN DIMENSIONS	THIRD ANGLE PROJECTION	DRAWING
		A2-SIZE
		SERIES
		51065
		MATERIAL NUMBER
		SEE CHART
		CUSTOMER
		GENERAL
		SHEET NUMBER
		1 OF 2

molex

MICRO-LATCH 2.0 WT
RECEPTACLE HOUSING

PRODUCT CUSTOMER DRAWING

DOCUMENT NUMBER	DOC TYPE	DOC PART	REVISION
510650000-SD	PSD	000	C

△ 適合製品及び各種仕様書
 APPLICABLE PRODUCTS AND VARIOUS SPECIFICATIONS

梱包仕様書 PACKING SPECIFICATION	PART NUMBER		SPECIFICATION NUMBER			
	51065**0*		SPK-51065-001			
適合端子 APPLICABLE TERMINAL	PART NUMBER		PLATING TYPE		WIRE SIZE (AWG)	
	502128*00		TIN		#24-30	
	503728*00				#22-26	
593548081		GOLD		#24-28		
適合嵌合相手 MATE WITH	THROUGH HOLE					
	TIN PLATING			GOLD PLATING		
	VERTICAL	RIGHT ANGLE		VERTICAL		
シリーズ番号 SERIES NO	53253	53254		502603		
製品仕様書 PRODUCT SPECIFICATION	510650000-PS/PS/000			510650001-PS/PS/000		

製品嵌合図は各"適合嵌合相手"図面参照のこと
 MATING VIEW : REFER TO EACH "MATE WITH" PART DRAWING

THIS DRAWING CONTAINS INFORMATION THAT IS PROPRIETARY TO MOLEX ELECTRONIC TECHNOLOGIES, LLC AND SHOULD NOT BE USED WITHOUT WRITTEN PERMISSION										
DIMENSION UNITS	SCALE	CURRENT REV DESC: REVISED				molex				
mm	NTS					MICRO-LATCH 2.0 WTB RECEPTACLE HOUSING				
GENERAL TOLERANCES (UNLESS SPECIFIED)						PRODUCT CUSTOMER DRAWING				
ANGULAR TOL	± 3.0°	EC NO: 660008								
4 PLACES	± 0.2	DRWN: HHUSSIN		2021/05/31						
3 PLACES	± 0.2	CHK'D: SAKIYAMA		2021/06/02						
2 PLACES	± 0.2	APPR: KOMURAKAMI		2021/06/02						
1 PLACE	± 0.2	INITIAL REVISION:								
0 PLACES	± 0.2	DRWN: HHUSSIN		2019/10/23		DOCUMENT NUMBER		DOC TYPE	DOC PART	REVISION
		APPR: KOMURAKAMI		2020/05/01		510650000-SD		PSD	000	C
DRAFT WHERE APPLICABLE MUST REMAIN WITHIN DIMENSIONS		THIRD ANGLE PROJECTION	DRAWING	SERIES	MATERIAL NUMBER	CUSTOMER		SHEET NUMBER		
			A2-SIZE	51065	SEE CHART	GENERAL		2 OF 2		

DOCUMENT STATUS	P1	RELEASE DATE	2021/06/02	04:00:50
-----------------	----	--------------	------------	----------