



产品编号 : [510650900](#)

Product Description : 2.00mm Pitch, Micro-Latch Receptacle Crimp Housing, Single Row, 9 Circuits, Natural

系列号 : 51065

状态 : Active

Product Category : Connector Housings



文件和资源

图纸

[图纸 510650900_sd.pdf](#)

3D 模型和设计文件

[3D模型 510650900_stp.zip](#)

规格

[包装规格 SPK-51065-001-001.pdf](#)

[产品规格 510650001-PS-000.pdf](#)

[产品规格 510650000-PS-000.pdf](#)

[产品规格 510651000-PS-000.pdf](#)

[产品规格 510651001-PS-000.pdf](#)

产物环境合规

合规

GADSL/IMDS	Not Relevant
China RoHS	
EU ELV	Not Relevant
Low-Halogen Status	Not Low-Halogen per IEC 61249-2-21
REACH SVHC	Not Contained per D(2023)3788-DC (14 Jun 2023)
EU RoHS	Compliant per EU 2015/863

多部分产品合规性声明

- Eu RoHS
- REACH SVHC
- Low-Halogen

多部分行业合规性文件

- IPC 1752A Class C
- IPC 1752A Class D
- Molex Product Compliance Declaration
- IEC-62474
- chemSHERPA (xml)

欧盟 RoHS 合格证书

产品详情

常规

状态	活动
类别	Connector Housings
系列	51065
说明	2.00mm Pitch, Micro-Latch Receptacle Crimp Housing, Single Row, 9 Circuits, Natural
应用	Signal, Wire-to-Board
产品系列	Micro-Latch Wire-to-Board Connector System
产品名称	Micro-Latch
UPC	800753574304

机构

CSA	LR19980
UL	E29179

物理

电路数（最多）	9
颜色-树脂	Natural
阻燃性	94V-0
性别	Receptacle
符合灼热丝规范	否
锁定插接部位	是
材料 - 树脂	Polyester
净重	228.400/mg
行数	1
包装形式	Bag

面板安装式	否
间距 - 插配接口	2.00mm
可堆叠的	否
运行温度范围	-55° to +105° C

可配插/可连接使用的产品

可配插部件

描述	产品编号
Micro-Latch Vertical Single Row Headers	<u>53253</u>
Micro-Latch Vertical Single Row Headers	<u>502603</u>
Micro-Latch Right-Angle Single Row Headers	<u>53254</u>

可连接使用部件

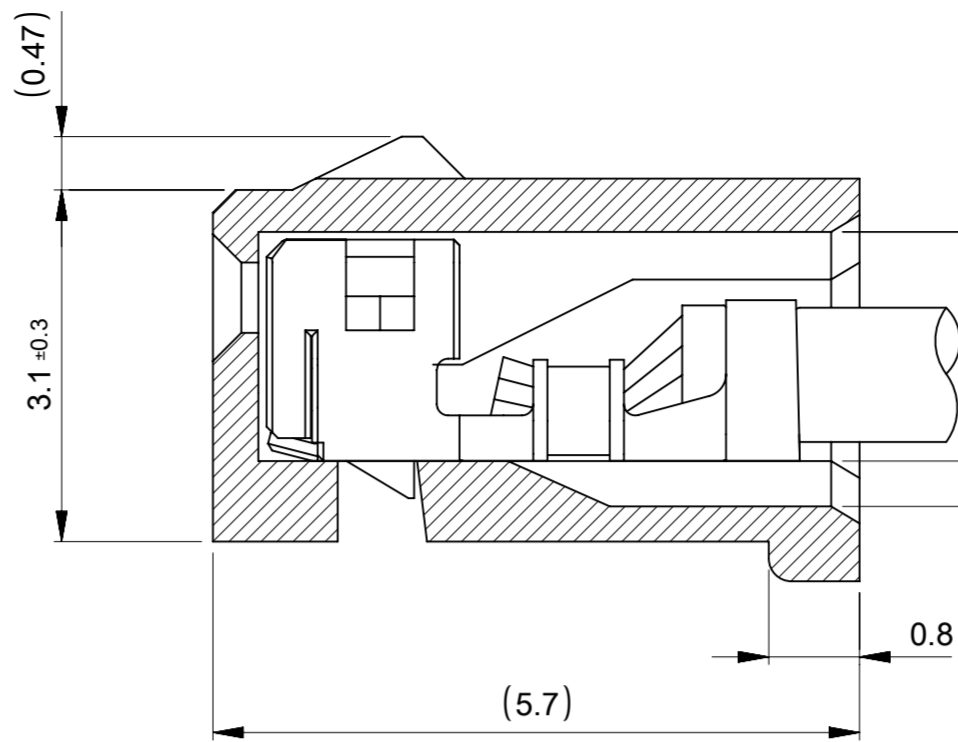
描述	产品编号
Micro-Latch Female Crimp Terminals	<u>50212</u>
Micro-Latch Female Crimp Terminals	<u>50372</u>
Micro-Latch Female Terminals	<u>59354</u>

回路1表示
CIRCUIT 1 MARK

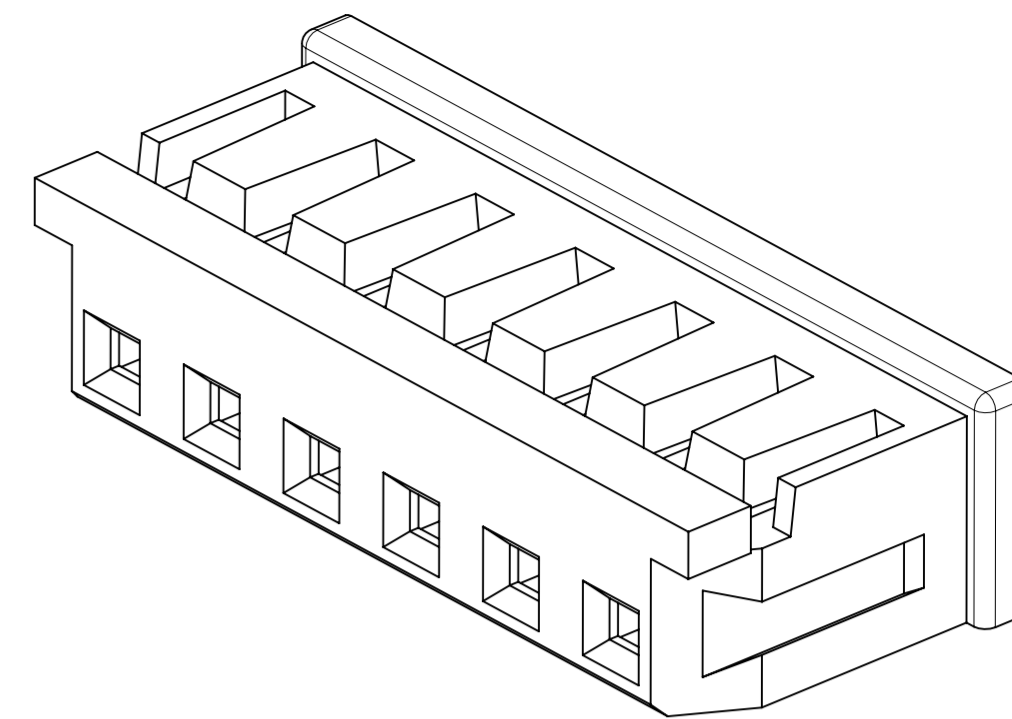
CIRCUIT 1

CIRCUIT N

3
トレードマーク
TRADE MARK



ターミナル装着状態図
TERMINAL ASSEMBLY DRAWING

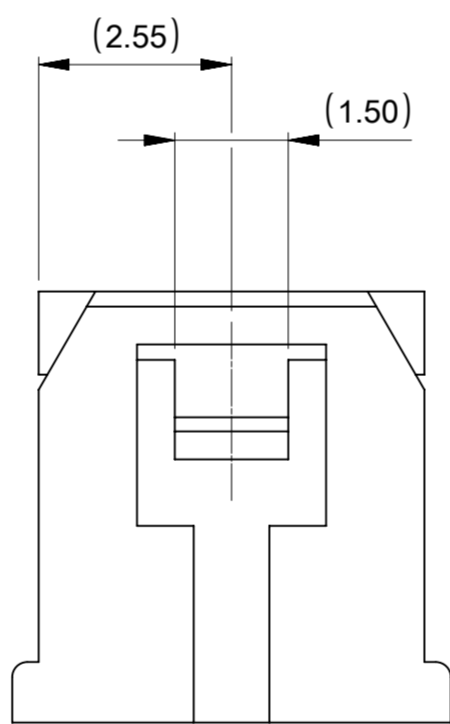
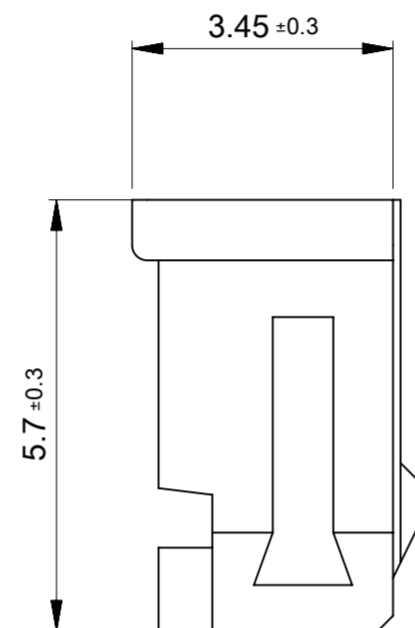


NOTES

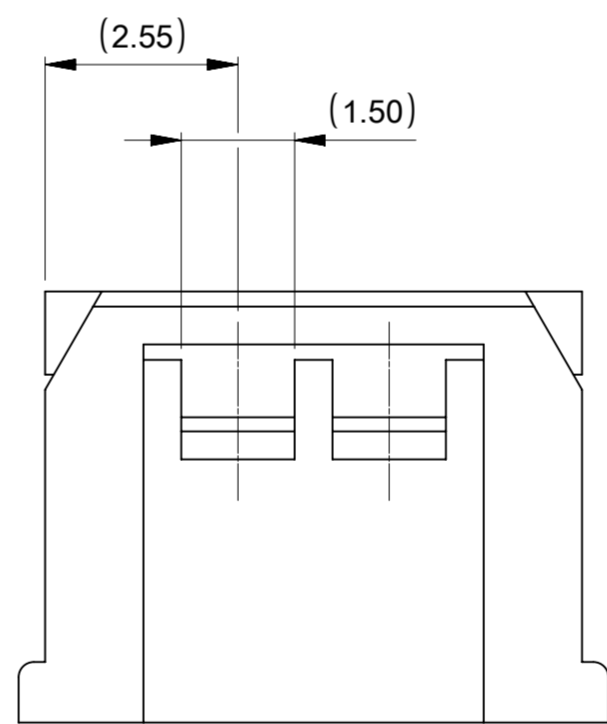
- 1 材質 : TABLE 1
MATERIAL : TABLE 1
- 2 適合製品及び各種仕様書はSHEET 2 をご参考ください。
PLEASE REFER TO SHEET 2 FOR APPLICABLE PRODUCTS AND VARIOUS SPECIFICATIONS.
- 3 トレードマーク : Mプラス1~2文字のアルファベットにて構成。
但し、"J"はJAPANを示す。(例: MXJ)
TRADE MARK: FORMED BY M AND THE NEXT 1~2 MORE LETTERS OF ALPHABET.
WHEN "J" MEANS JAPAN. (e.g. MXJ)
- 4 オーダー番号 ORDER NO
51065**0*

色番号 COLOR CODE	
0	ナチュラル(白) NATURAL (WHITE)
1	黒 BLACK

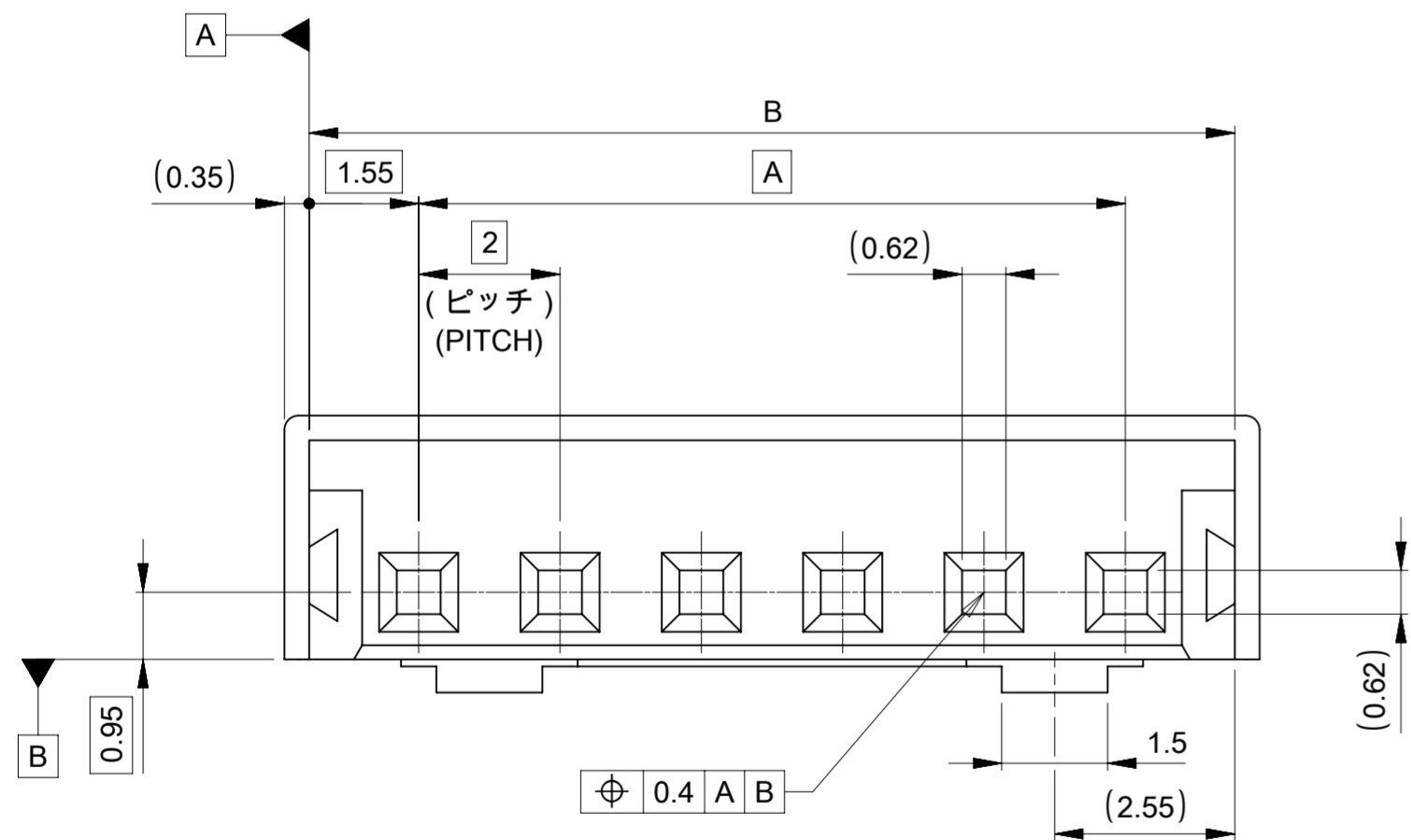
極数
CKT SIZE



2極の場合
FOR 2 CKT



3極の場合
FOR 3 CKT



NOM	TOL	NOM	TOL	NOM	色 COLOR		極数 CIRCUITS
31.8	±0.30	31.1	±0.30	28	//	510651500	15
29.8		29.1		26		510651400	14
27.8		27.1		24		510651300	13
25.8		25.1		22		510651200	12
23.8		23.1		20		510651100	11
21.8		21.1		18		510651000	10
19.8	±0.25	19.1	±0.25	16		510650900	9
17.8		17.1		14		510650800	8
15.8		15.1		12		510650700	7
13.8		13.1		10		510650600	6
11.8		11.1		8	510650500	5	
9.8		9.1		6	510650400	4	
7.8	±0.20	7.1	±0.20	4	510650300	3	
5.8		5.1		2	510650201	510650200	2
C		B		A	黒 BLACK	ナチュラル(白) NATURAL (WHITE)	
					4 △ オーダー番号 ORDER NO		
					梱包形態: ポリ袋 PACKAGING: POLYBAG		

THIS DRAWING CONTAINS INFORMATION THAT IS PROPRIETARY TO MOLEX ELECTRONIC TECHNOLOGIES, LLC AND SHOULD NOT BE USED WITHOUT WRITTEN PERMISSION

DIMENSION UNITS	SCALE	CURRENT REV DESC: REVISED	
mm	NTS		
GENERAL TOLERANCES (UNLESS SPECIFIED)			
ANGULAR TOL	± 3.0°		
4 PLACES	± 0.2	EC NO: 660008	2021/05/31
3 PLACES	± 0.2	DRWN: HHUSSIN	2021/06/02
2 PLACES	± 0.2	CHK'D: SAKIYAMA	2021/06/02
1 PLACE	± 0.2	APPR: KOMURAKAMI	2021/06/02
0 PLACES	± 0.2	INITIAL REVISION:	
DRAFT WHERE APPLICABLE MUST REMAIN WITHIN DIMENSIONS		DRWN: HHUSSIN	2019/10/23
THIRD ANGLE PROJECTION		APPR: KOMURAKAMI	2020/05/01
DRAWING		SERIES	MATERIAL NUMBER
A2-SIZE		51065	SEE CHART
CUSTOMER		GENERAL	
SHEET NUMBER		1 OF 2	

molex

MICRO-LATCH 2.0 WT
RECEPTACLE HOUSING

PRODUCT CUSTOMER DRAWING

DOCUMENT NUMBER: 510650000-SD
DOC TYPE: PSD
DOC PART: 000
REVISION: C

1 TABLE 1

部品 PART	材質 MATERIAL
ハウジング HOUSING	POLYESTER (PBT), UL94V-0 COLOR: SEE CHART

△ 適合製品及び各種仕様書
 APPLICABLE PRODUCTS AND VARIOUS SPECIFICATIONS

梱包仕様書 PACKING SPECIFICATION	PART NUMBER		SPECIFICATION NUMBER			
	51065**0*		SPK-51065-001			
適合端子 APPLICABLE TERMINAL	PART NUMBER		PLATING TYPE		WIRE SIZE (AWG)	
	502128*00		TIN		#24-30	
	503728*00				#22-26	
593548081		GOLD		#24-28		
適合嵌合相手 MATE WITH	THROUGH HOLE					
	TIN PLATING			GOLD PLATING		
	VERTICAL	RIGHT ANGLE		VERTICAL		
シリーズ番号 SERIES NO	53253	53254		502603		
製品仕様書 PRODUCT SPECIFICATION	510650000-PS/PS/000			510650001-PS/PS/000		

製品嵌合図は各"適合嵌合相手"図面参照のこと
 MATING VIEW : REFER TO EACH "MATE WITH" PART DRAWING

THIS DRAWING CONTAINS INFORMATION THAT IS PROPRIETARY TO MOLEX ELECTRONIC TECHNOLOGIES, LLC AND SHOULD NOT BE USED WITHOUT WRITTEN PERMISSION										
DIMENSION UNITS	SCALE	CURRENT REV DESC: REVISED				molex				
mm	NTS					MICRO-LATCH 2.0 WTB RECEPTACLE HOUSING				
GENERAL TOLERANCES (UNLESS SPECIFIED)						PRODUCT CUSTOMER DRAWING				
ANGULAR TOL ± 3.0°		EC NO: 660008				DOCUMENT NUMBER				
4 PLACES ± 0.2		DRWN: HHUSSIN		2021/05/31		510650000-SD		DOC TYPE	DOC PART	REVISION
3 PLACES ± 0.2		CHK'D: SAKIYAMA		2021/06/02		PSD	000	C		
2 PLACES ± 0.2		APPR: KOMURAKAMI		2021/06/02						
1 PLACE ± 0.2		INITIAL REVISION:								
0 PLACES ± 0.2		DRWN: HHUSSIN		2019/10/23						
DRAFT WHERE APPLICABLE MUST REMAIN WITHIN DIMENSIONS		THIRD ANGLE PROJECTION		DRAWING	SERIES	MATERIAL NUMBER	CUSTOMER		SHEET NUMBER	
				A2-SIZE	51065	SEE CHART	GENERAL		2 OF 2	