



产品编号 : 510651500

**Product Description** : 2.00mm Pitch, Micro-Latch Receptacle Crimp Housing, Single Row, 15 Circuits, Natural

系列号 : 51065

**状态** : Active

**Product Category** : Connector Housings

---

## 文件和资源

### 图纸

图纸 510651500\_sd.pdf

### 3D 模型和设计文件

3D模型 510651500\_stp.zip

### 规格

包装规格 SPK-51065-001-001.pdf

产品规格 510650001-PS-000.pdf

产品规格 510650000-PS-000.pdf


产品规格 510651000-PS-000.pdf

产品规格 510651001-PS-000.pdf

---

## 产物环境合规

### 合规

GADSL/IMDS	Not Relevant
China RoHS	
EU ELV	Not Relevant
Low-Halogen Status	Not Low-Halogen per IEC 61249-2-21
REACH SVHC	Not Contained per D(2023)8585-DC (23 Jan 2024)
EU RoHS	Compliant per EU 2015/863

### 多部分产品合规性声明

- Eu RoHS
- REACH SVHC
- Low-Halogen
  
- IPC 1752A Class C
- IPC 1752A Class D

- Molex Product Compliance Declaration

- IEC-62474

- chemSHERPA (xml)

欧盟 RoHS 合格证书

---

## 产品详情

### 常规

状态	活动
类别	Connector Housings
系列	51065
说明	2.00mm Pitch, Micro-Latch Receptacle Crimp Housing, Single Row, 15 Circuits, Natural
应用	Signal, Wire-to-Board
产品系列	Micro-Latch Wire-to-Board Connector System
产品名称	Micro-Latch
UPC	800753574342

### 机构

CSA	LR19980
UL	E29179

### 物理

电路数（最多）	15
颜色-树脂	Natural
阻燃性	94V-0
性别	Receptacle
符合灼热丝规范	否
锁定插接部位	是
材料 - 树脂	Polyester
净重	365.900/mg
行数	1
包装形式	Bag
面板安装式	否
间距 - 插配接口	2.00mm

可堆叠的	否
运行温度范围	-55° to +105° C

---

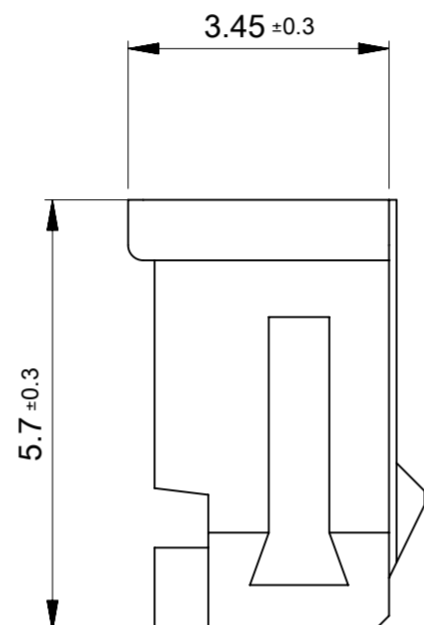
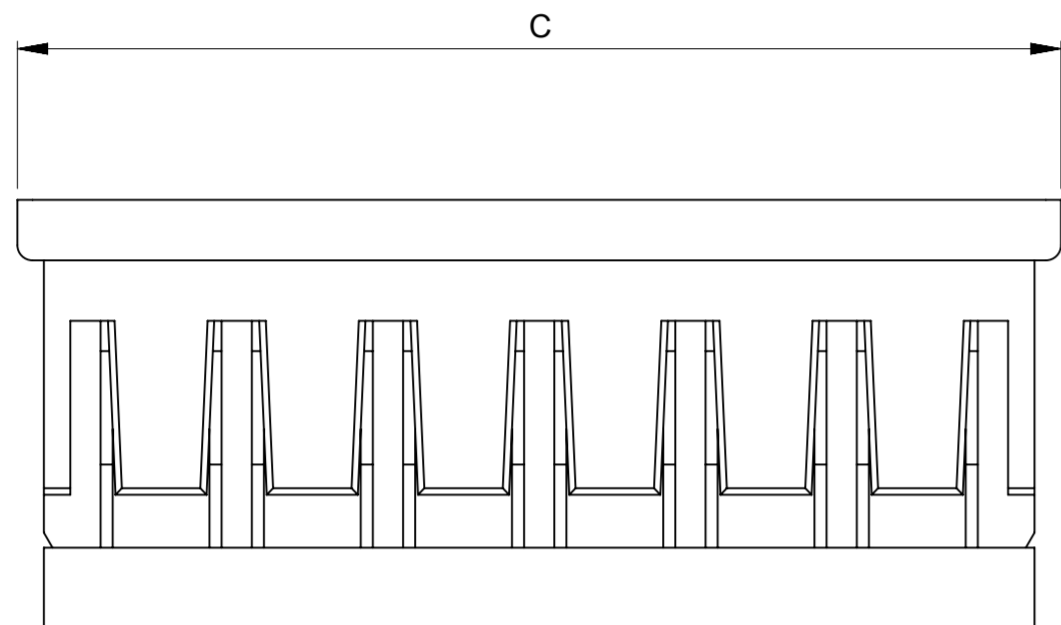
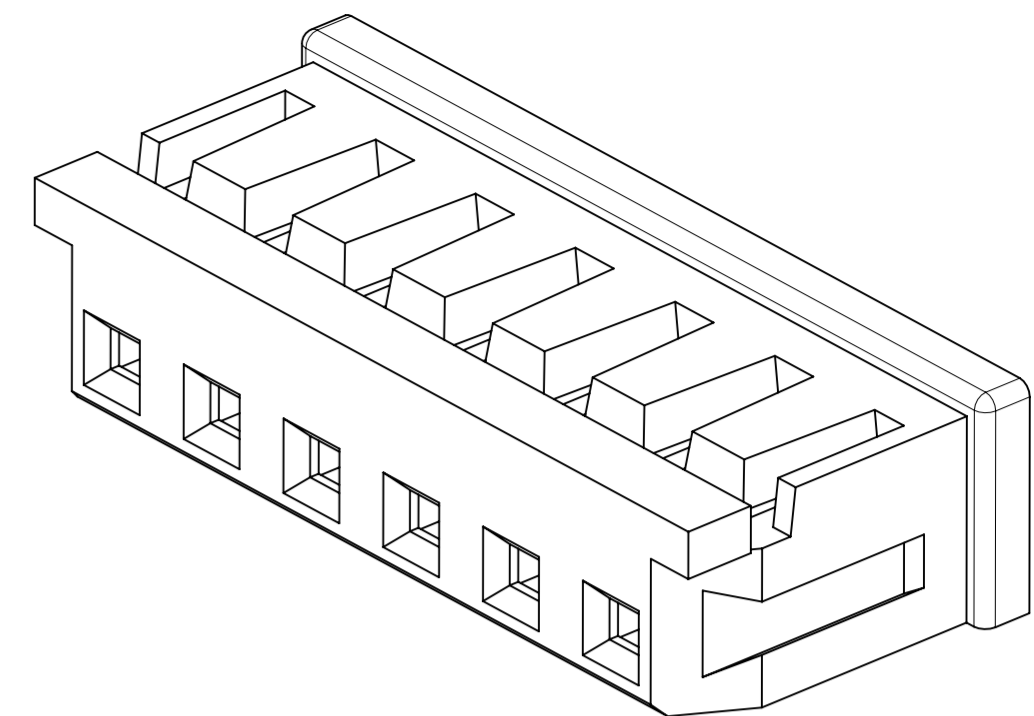
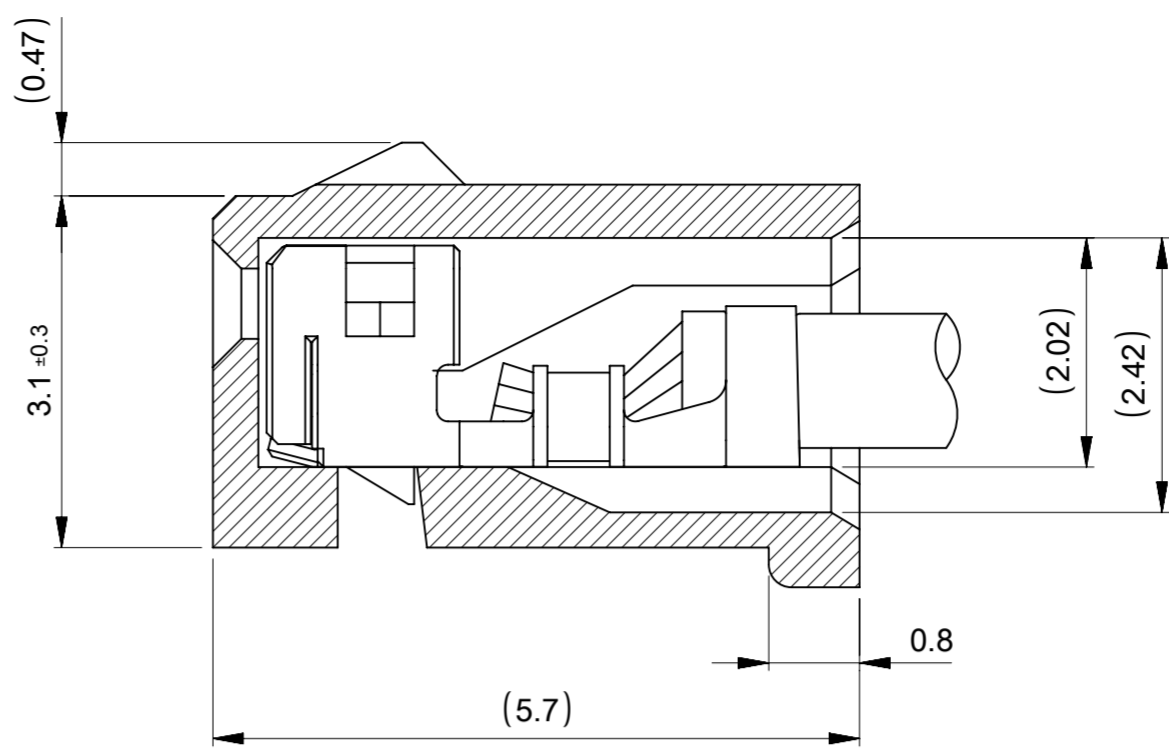
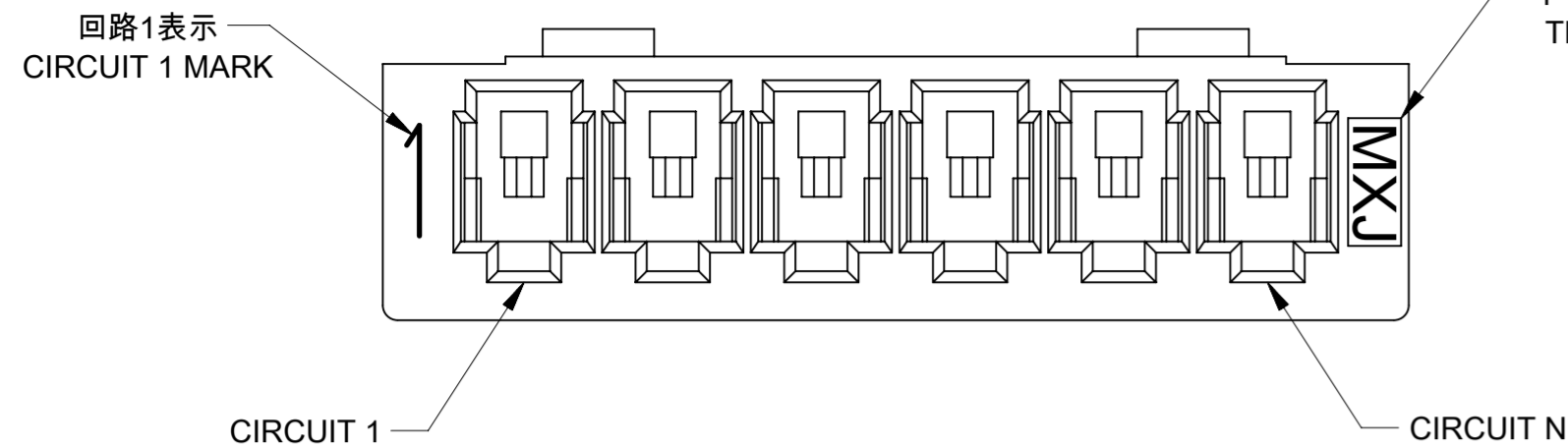
## 可配插/可连接使用的产品

### 可配插部件

描述	产品编号
Micro-Latch Vertical Single Row Headers	<u>53253</u>
Micro-Latch Vertical Single Row Headers	<u>502603</u>
Micro-Latch Right-Angle Single Row Headers	<u>53254</u>

### 可连接使用部件

描述	产品编号
Micro-Latch Female Crimp Terminals	<u>50212</u>
Micro-Latch Female Crimp Terminals	<u>50372</u>
Micro-Latch Female Terminals	<u>59354</u>

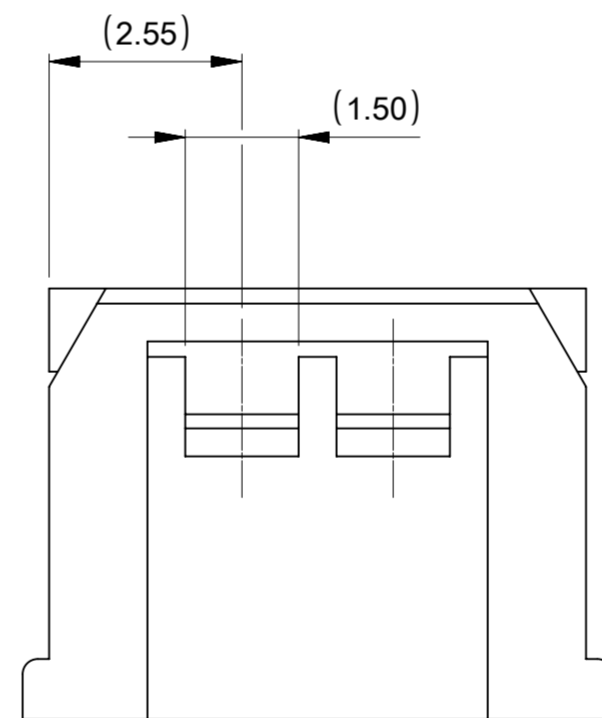
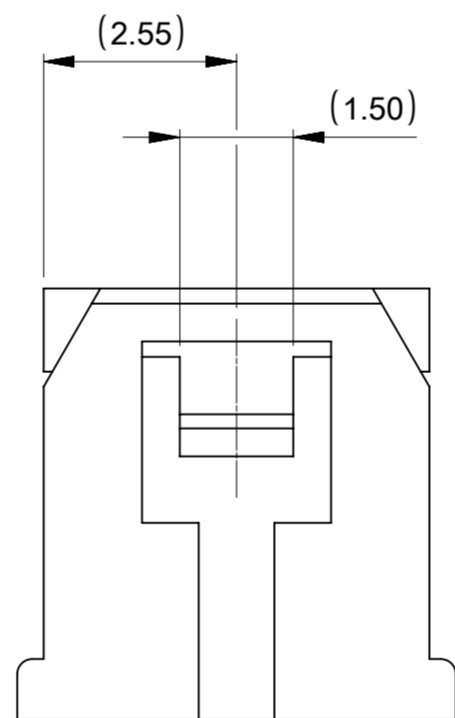
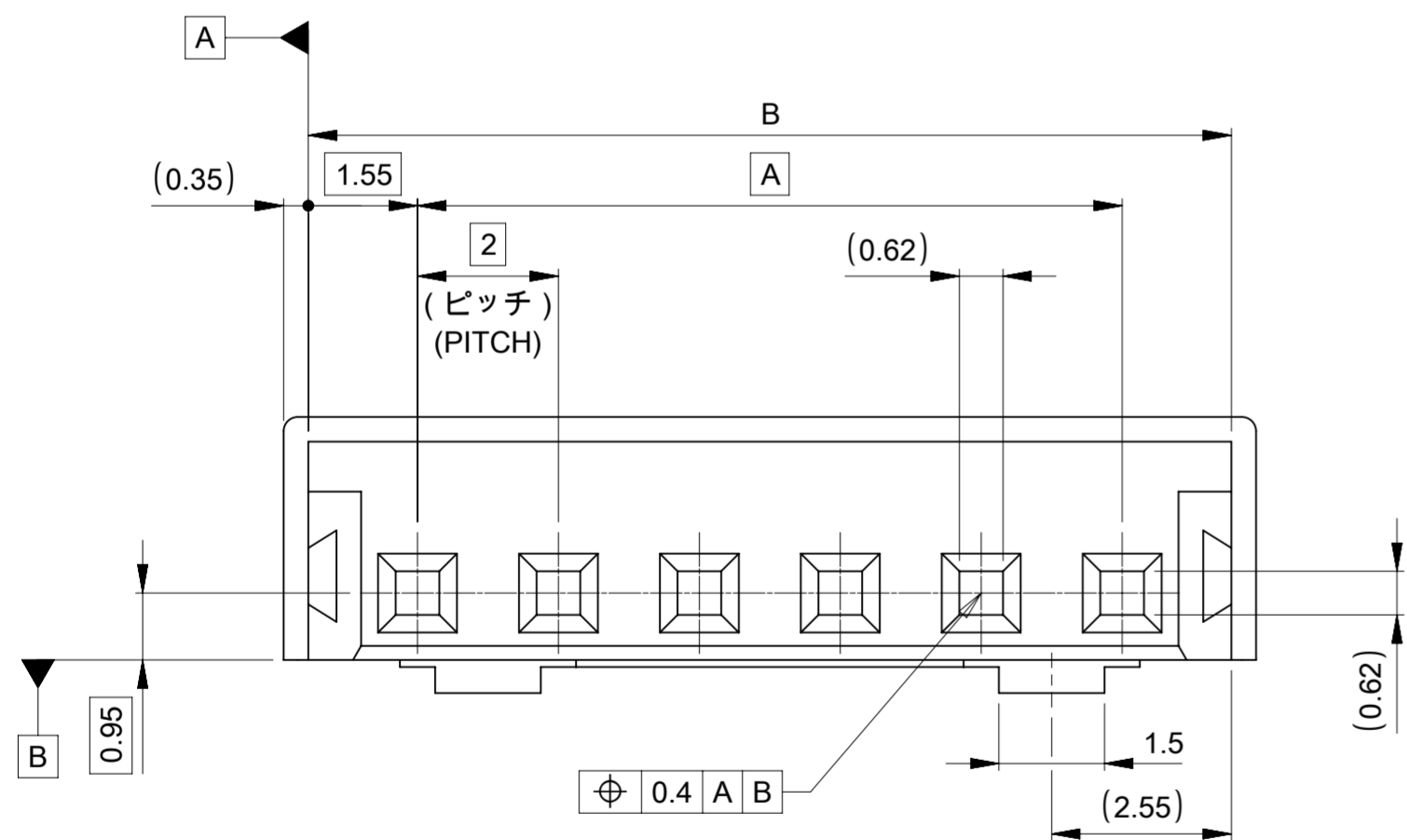


NOTES

- 1 材質 : TABLE 1  
MATERIAL : TABLE 1
- 2 適合製品及び各種仕様書はSHEET 2 をご参考ください。  
PLEASE REFER TO SHEET 2 FOR APPLICABLE PRODUCTS AND VARIOUS SPECIFICATIONS.
- 3 トレードマーク : Mプラス1~2文字のアルファベットにて構成。  
但し、"J"はJAPANを示す。(例: MXJ)  
TRADE MARK: FORMED BY M AND THE NEXT 1~2 MORE LETTERS OF ALPHABET.  
WHEN "J" MEANS JAPAN. (e.g. MXJ)
- 4 オーダー番号 ORDER NO  
51065\*\*0\*

色番号 COLOR CODE	
0	ナチュラル(白) NATURAL (WHITE)
1	黒 BLACK

極数  
CKT SIZE



NOM	TOL	NOM	TOL	NOM	色 COLOR		極数 CIRCUITS
31.8	±0.30	31.1	±0.30	28	//	510651500	15
29.8		29.1		26		510651400	14
27.8		27.1		24		510651300	13
25.8		25.1		22		510651200	12
23.8		23.1		20		510651100	11
21.8		21.1		18		510651000	10
19.8	±0.25	19.1	±0.25	16		510650900	9
17.8		17.1		14		510650800	8
15.8		15.1		12		510650700	7
13.8		13.1		10		510650600	6
11.8		11.1		8	510650500	5	
9.8		9.1		6	510650400	4	
7.8	±0.20	7.1	±0.20	4	510650300	3	
5.8		5.1		2	510650201	510650200	2
C		B		A	黒 BLACK	ナチュラル(白) NATURAL (WHITE)	
4 △ オーダー番号 ORDER NO							
梱包形態: ポリ袋 PACKAGING: POLYBAG							

THIS DRAWING CONTAINS INFORMATION THAT IS PROPRIETARY TO MOLEX ELECTRONIC TECHNOLOGIES, LLC AND SHOULD NOT BE USED WITHOUT WRITTEN PERMISSION

DIMENSION UNITS <b>mm</b>	SCALE <b>NTS</b>	CURRENT REV DESC: REVISED		<b>molex</b>		
GENERAL TOLERANCES (UNLESS SPECIFIED)		EC NO: 660008				
ANGULAR TOL ± 3.0°	4 PLACES ± 0.2	DRWN: HHUSSIN	2021/05/31	PRODUCT CUSTOMER DRAWING		
3 PLACES ± 0.2	2 PLACES ± 0.2	CHK'D: SAKIYAMA	2021/06/02	DOCUMENT NUMBER		
1 PLACE ± 0.2	0 PLACES ± 0.2	APPR: KOMURAKAMI	2021/06/02	DOC TYPE DOC PART REVISION		
INITIAL REVISION:		DRWN: HHUSSIN		510650000-SD		
DRAFT WHERE APPLICABLE MUST REMAIN WITHIN DIMENSIONS		APPR: KOMURAKAMI		PSD 000 C		
THIRD ANGLE PROJECTION		DRAWING		MATERIAL NUMBER		
A2-SIZE		SERIES		CUSTOMER		
51065		SEE CHART		GENERAL		
SHEET NUMBER		1 OF 2				

1 TABLE 1

部品 PART	材質 MATERIAL
ハウジング HOUSING	POLYESTER (PBT), UL94V-0 COLOR: SEE CHART

△ 適合製品及び各種仕様書  
 APPLICABLE PRODUCTS AND VARIOUS SPECIFICATIONS

梱包仕様書 PACKING SPECIFICATION	PART NUMBER		SPECIFICATION NUMBER			
	51065**0*		SPK-51065-001			
適合端子 APPLICABLE TERMINAL	PART NUMBER		PLATING TYPE		WIRE SIZE (AWG)	
	502128*00		TIN		#24-30	
	503728*00				#22-26	
593548081		GOLD		#24-28		
適合嵌合相手 MATE WITH	THROUGH HOLE					
	TIN PLATING			GOLD PLATING		
	VERTICAL	RIGHT ANGLE		VERTICAL		
シリーズ番号 SERIES NO	53253	53254		502603		
製品仕様書 PRODUCT SPECIFICATION	510650000-PS/PS/000			510650001-PS/PS/000		

製品嵌合図は各"適合嵌合相手"図面参照のこと  
 MATING VIEW : REFER TO EACH "MATE WITH" PART DRAWING

THIS DRAWING CONTAINS INFORMATION THAT IS PROPRIETARY TO MOLEX ELECTRONIC TECHNOLOGIES, LLC AND SHOULD NOT BE USED WITHOUT WRITTEN PERMISSION										
DIMENSION UNITS	SCALE	CURRENT REV DESC: REVISED				molex				
mm	NTS					MICRO-LATCH 2.0 WTB RECEPTACLE HOUSING				
GENERAL TOLERANCES (UNLESS SPECIFIED)						PRODUCT CUSTOMER DRAWING				
ANGULAR TOL	± 3.0°	EC NO: 660008								
4 PLACES	± 0.2	DRWN: HHUSSIN		2021/05/31						
3 PLACES	± 0.2	CHK'D: SAKIYAMA		2021/06/02						
2 PLACES	± 0.2	APPR: KOMURAKAMI		2021/06/02						
1 PLACE	± 0.2	INITIAL REVISION:								
0 PLACES	± 0.2	DRWN: HHUSSIN		2019/10/23		DOCUMENT NUMBER		DOC TYPE	DOC PART	REVISION
		APPR: KOMURAKAMI		2020/05/01		510650000-SD		PSD	000	C
DRAFT WHERE APPLICABLE MUST REMAIN WITHIN DIMENSIONS		THIRD ANGLE PROJECTION	DRAWING	SERIES	MATERIAL NUMBER	CUSTOMER		SHEET NUMBER		
			A2-SIZE	51065	SEE CHART	GENERAL		2 OF 2		