



产品编号 : [511100656](#)

Product Description : 2.00mm Pitch, Milli-Grid Receptacle Housing, 6 Circuits, with Center Locking Ramp and Side Polarization Keys, Lead-Free

系列号 : 51110

状态 : Active

Product Category : Connector Housings



文件和资源

图纸

[图纸 511100656_sd.pdf](#)

[包装设计图 PK-51110-300-001.pdf](#)

3D 模型和设计文件

[3D模型 511100656_stp.zip](#)


规格

[应用规格 503940001-AS-000.pdf](#)

[产品规格 PS-51110-001-001.pdf](#)

产物环境合规

合规

GADSL/IMDS	Not Relevant
China RoHS	
EU ELV	Not Relevant
Low-Halogen Status	Not Low-Halogen per IEC 61249-2-21
REACH SVHC	Not Contained per D(2023)3788-DC (14 Jun 2023)
EU RoHS	Compliant per EU 2015/863

[多部分产品合规性声明](#)

- Eu RoHS

- REACH SVHC

- Low-Halogen

[多部分行业合规性文件](#)

- IPC 1752A Class C
- IPC 1752A Class D
- Molex Product Compliance Declaration
- IEC-62474
- chemSHERPA (xml)

欧盟 RoHS 合格证书

产品详情

常规

状态	活动
类别	Connector Housings
系列	51110
说明	2.00mm Pitch, Milli-Grid Receptacle Housing, 6 Circuits, with Center Locking Ramp and Side Polarization Keys, Lead-Free
应用	Signal, Wire-to-Board
个评论	Applicable Wire Ranges: 24-30 AWG (series 50394 terminal) and 22-28 AWG (series 87396 terminal)
产品系列	Milli-Grid Connector System
产品名称	Milli-Grid
UPC	800753616974

机构

CSA	LR19980
UL	E29179

物理

电路数 (最多)	6
颜色-树脂	黑色
阻燃性	94V-0
性别	Receptacle
符合灼热丝规范	否
插接极性	无
锁定插接部位	是
材料 - 树脂	Polyester

净重	0.140/g
行数	2
包装形式	Bag
面板安装式	否
间距 - 插配接口	2.00mm
间距 - 终端界面	2.00mm
有极性的插配件	是
可堆叠的	否
运行温度范围	-40° to +105° C

可配插/可连接使用的产品

可配插部件

描述	产品编号
Milli-Grid Vertical Through Hole Headers	<u>87758</u>
Milli-Grid Vertical Surface Mount Headers	<u>87759</u>
Milli-Grid Right-Angle Through Hole Headers	<u>87760</u>
Milli-Grid Vertical, Dual Row, Through Hole Headers	<u>87831</u>
Milli-Grid Vertical, Dual Row, Surface Mount Headers	<u>87832</u>
Milli-Grid BMI Vertical, Dual Row, Through Hole Headers	<u>151013</u>
Milli-Grid Vertical, Dual Row, Through Hole Headers	<u>151117</u>
Milli-Grid Vertical, Dual Row, Surface Mount Headers	<u>151118</u>
Milli-Grid Right-Angle, Dual Row, Through Hole Headers	<u>151119</u>
Milli-Grid Right-Angle, Dual Row, Surface Mount Headers	<u>151120</u>

可连接使用部件

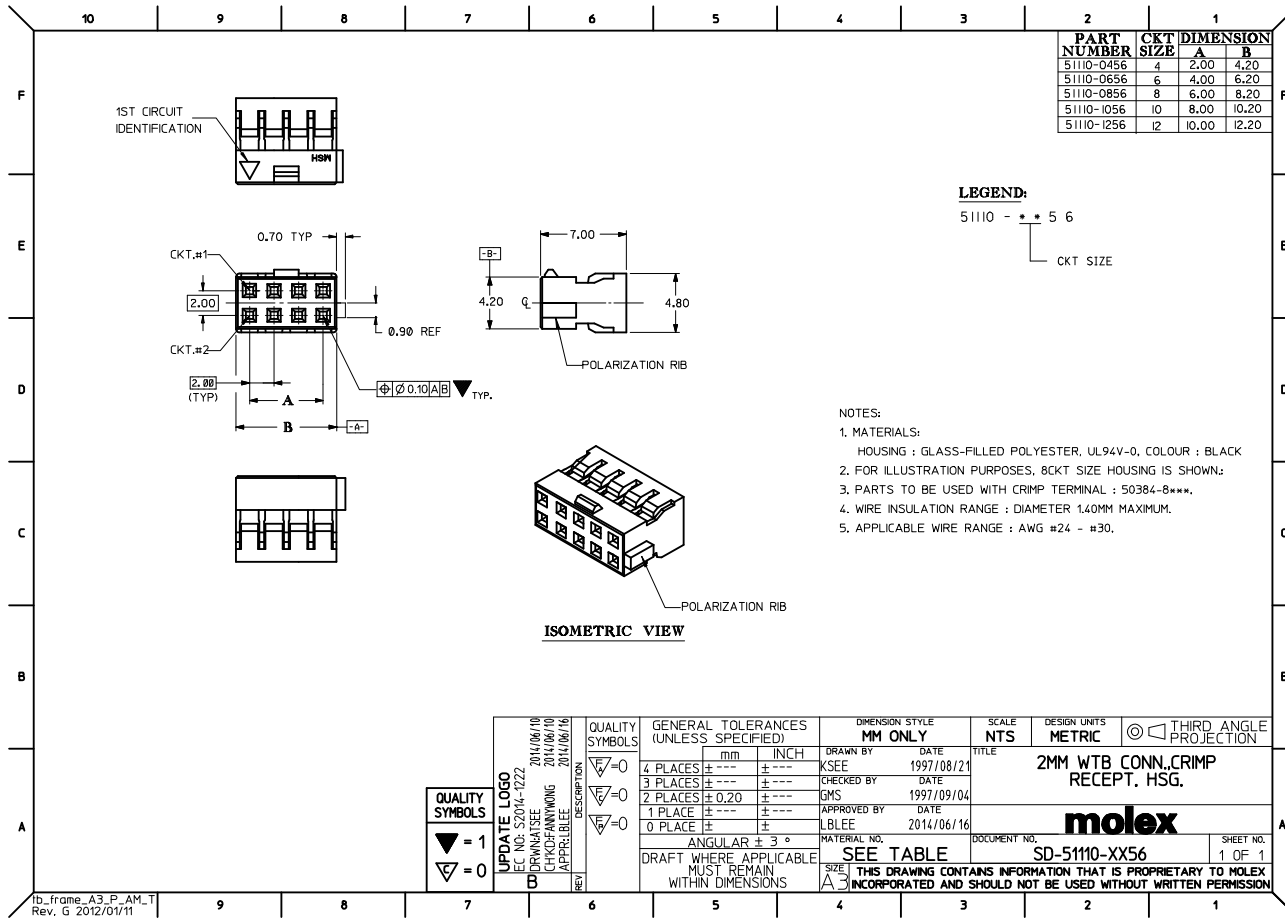
描述	产品编号
Pre-Crimped Lead Milli-Grid Female-to-Milli-Grid Female, Gold (Au) Plating, 150.00mm Length, 24 AWG, Black	<u>/content/molex/molex-dot-com/cn/zh/products/product-page.html/797581095.html</u>

Pre-Crimped Lead Milli-Grid Female-to-Milli-Grid Female, Gold (Au) Plating, 300.00mm Length, 24 AWG, Black	/content/molex/molex-dot-com/cn/zh/products/product-page.html/797581096.html
Milli-Grid Female Crimp Terminals	<u>50394</u>
Milli-Grid Female Crimp Terminals	<u>87396</u>

施工工具

全局

描述	产品编号
Extractor Tool for Milli-Grid 2.0 Housings	<u>638242800</u>



PART NUMBER	CKT SIZE	DIMENSION	
		A	B
51110-0456	4	2.00	4.20
51110-0656	6	4.00	6.20
51110-0856	8	6.00	8.20
51110-1056	10	8.00	10.20
51110-1256	12	10.00	12.20

LEGEND:

51110 - * * 5 6
 CKT SIZE

NOTES:

1. MATERIALS:
 HOUSING : GLASS-FILLED POLYESTER, UL94V-0, COLOUR : BLACK
2. FOR ILLUSTRATION PURPOSES, 8CKT SIZE HOUSING IS SHOWN:
3. PARTS TO BE USED WITH CRIMP TERMINAL : 50384-8***.
4. WIRE INSULATION RANGE : DIAMETER 1.40MM MAXIMUM.
5. APPLICABLE WIRE RANGE : AWG #24 - #30.

ISOMETRIC VIEW

QUALITY SYMBOLS	DESCRIPTION
▽ = 1	
▽ = 0	

UPDATE LOGO	2014/06/10
EC NO. S2014-0222	2014/06/10
DRAWN BY SEE	2014/06/10
CHKD-FANWONG	2014/06/10
APPR-LLEE	2014/06/16
REV	DESCRIPTION

QUALITY SYMBOLS	GENERAL TOLERANCES (UNLESS SPECIFIED)		DIMENSION STYLE		SCALE	DESIGN UNITS	THIRD ANGLE PROJECTION
	mm	INCH	MM ONLY	NTS			
▽ = 0	4 PLACES ± ---	± ---	KSEE	DATE 1997/08/21	NTS	METRIC	THIRD ANGLE PROJECTION
▽ = 0	3 PLACES ± ---	± ---	CHECKED BY	DATE			
▽ = 0	2 PLACES ± 0.20	± ---	GMS	DATE 1997/09/04			
▽ = 0	1 PLACE ± ---	± ---	APPROVED BY	DATE			
▽ = 0	0 PLACE ±	±	LBLEE	DATE 2014/06/16			
	ANGULAR ± 3°		MATERIAL NO.		DOCUMENT NO.	SHEET NO.	
	DRAFT WHERE APPLICABLE MUST REMAIN WITHIN DIMENSIONS		SEE TABLE		SD-51110-XX56	1 OF 1	

TITLE		
2MM WT8 CONN. CRIMP RECEPT. HSG.		
THIS DRAWING CONTAINS INFORMATION THAT IS PROPRIETARY TO MOLEX INCORPORATED AND SHOULD NOT BE USED WITHOUT WRITTEN PERMISSION		