

产品编号 : 511911500

Product Description : 2.50mm Pitch Mini-Latch Wire-to-Wire and Wire-to-Board Receptacle Housing, with Guide Rails, 15 Circuits

系列号 : 51191

状态 : New Business Not Supported


Product Category : Connector Housings



文件和资源

产物环境合规

合规

| | |
|--------------------|--|
| GADSL/IMDS | Not Relevant |
| China RoHS |  |
| EU ELV | Not Relevant |
| Low-Halogen Status | Low-Halogen per IEC 61249-2-21 |
| REACH SVHC | Not Contained per D(2023)3788-DC (14 Jun 2023) |
| EU RoHS | Compliant per EU 2015/863 |

多部分产品合规性声明

- Eu RoHS
- REACH SVHC
- Low-Halogen

多部分行业合规性文件

- IPC 1752A Class C
- IPC 1752A Class D
- Molex Product Compliance Declaration
- IEC-62474
- chemSHERPA (xml)

欧盟 RoHS 合格证书

产品详情

常规

| | |
|------|--|
| 状态 | New Business Not Supported |
| 类别 | Connector Housings |
| 系列 | 51191 |
| 说明 | 2.50mm Pitch Mini-Latch Wire-to-Wire and Wire-to-Board Receptacle Housing, with Guide Rails, 15 Circuits |
| 应用 | Signal, Wire-to-Board, Wire-to-Wire |
| 产品系列 | Mini-Latch Wire-to-Board / Wire-to-Wire Connector System |
| 产品名称 | Mini-Latch |
| UPC | 800753327962 |

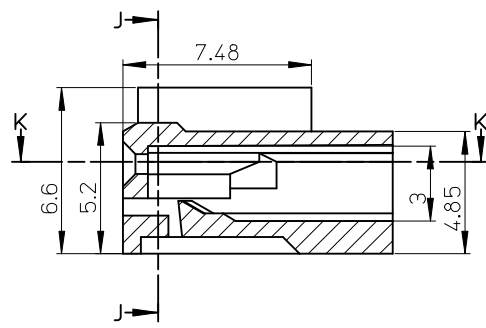
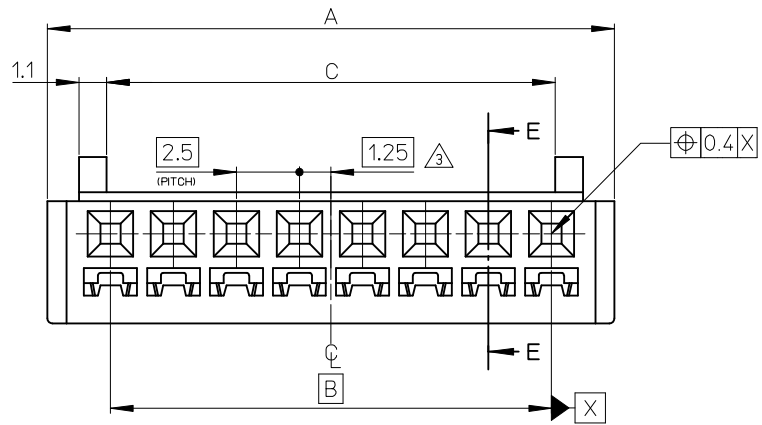
机构

| | |
|----|--------|
| UL | E29179 |
|----|--------|

物理

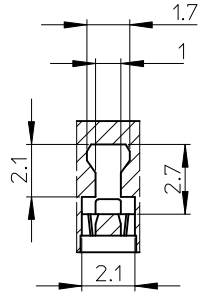
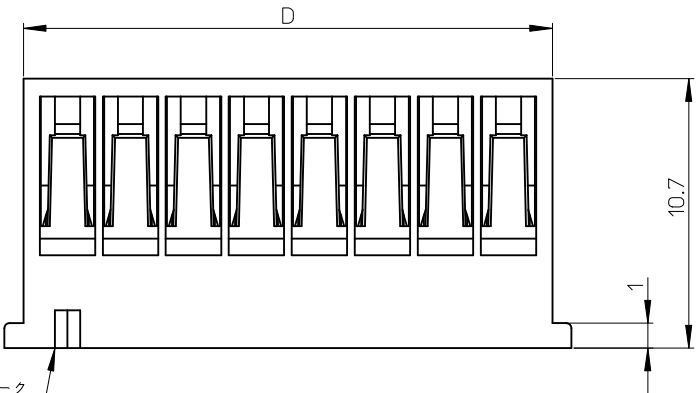
| | |
|-----------|-----------------|
| 电路数（最多） | 15 |
| 阻燃性 | 94V-0 |
| 性别 | Receptacle |
| 符合灼热丝规范 | 否 |
| 材料 - 树脂 | Nylon |
| 净重 | 1389.700/mg |
| 行数 | 1 |
| 包装形式 | Bag |
| 面板安装式 | 否 |
| 间距 - 插配接口 | 2.50mm |
| 可堆叠的 | 否 |
| 运行温度范围 | -40° to +105° C |

10 9 8 7 6 5 4 3 2 1

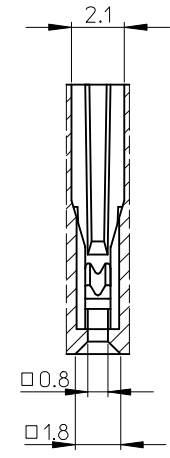


断面 E-E
SECTION E-E

NOTES: 1. 適合ターミナル : 50802-****
 APPLICABLE TERMINAL : 50802-****
 2. 嵌合相手 : 5045,5046,5240シリーズ
 MATE WITH : 5045,5046,5240 SERIES
 △ 偶数極の製品に適用
 APPLY EVEN CIRCUITS PRODUCTS



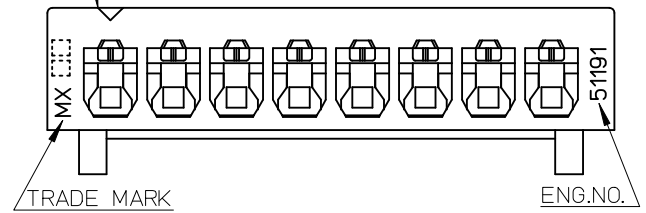
断面 J-J
SECTION J-J



断面 K-K
SECTION K-K

| | | | | | |
|------|------|------|------|--------------|------|
| 41 | 37.8 | 37.5 | 42.5 | 51191-1600 | 16 |
| 38.5 | 35.3 | 35 | 40 | 51191-1500 | 15 |
| 36 | 32.8 | 32.5 | 37.5 | 51191-1400 | 14 |
| 33.5 | 30.3 | 30 | 35 | 51191-1300 | 13 |
| 31 | 27.8 | 27.5 | 32.5 | 51191-1200 | 12 |
| 28.5 | 25.3 | 25 | 30 | 51191-1100 | 11 |
| 26 | 22.8 | 22.5 | 27.5 | 51191-1000 | 10 |
| 23.5 | 20.3 | 20 | 25 | 51191-0900 | 9 |
| 21 | 17.8 | 17.5 | 22.5 | 51191-0800 | 8 |
| 18.5 | 15.3 | 15 | 20 | 51191-0700 | 7 |
| 16 | 12.8 | 12.5 | 17.5 | 51191-0600 | 6 |
| 13.5 | 10.3 | 10 | 15 | 51191-0500 | 5 |
| 11 | 7.8 | 7.5 | 12.5 | 51191-0400 | 4 |
| 8.5 | 5.3 | 5 | 10 | 51191-0300 | 3 |
| 6 | 2.8 | 2.5 | 7.5 | 51191-0200 | 2 |
| D | C | B | A | MATERIAL NO. | CKT. |

回路番号1マーク
CKT.NO.1MARK



| | |
|----------------------|-----------------|
| 材料 MATERIAL | NYLON66.JL94V-0 |
| 仕上げ FINISH | — |
| 適用電線範囲 WIRE RANGE | — |
| 被覆外径 INS. RANGE | — |

| | | |
|---|--|-------|
| REVISED EC NO. : J2009-1227 DRWN:YOSHIDAM 2008/12/19 CHKD:THARUYAMA 2008/12/19 APPR:NUKITA 2009/01/16 | GENERAL TOLERANCES (UNLESS SPECIFIED) | |
| | 10 UNDER | ±0.2 |
| | 10 OVER 30 UNDER | ±0.25 |
| | 30 OVER | ±0.3 |
| DESCRIPTION | ANGULAR ±---° | |
| REV | DRAFT WHERE APPLICABLE MUST REMAIN WITHIN DIMENSIONS | |

| | |
|----------------------------|------------|
| DIMENSION STYLE MM ONLY | |
| DRAWN BY | DATE |
| S.MATSUZAKI | 1998/04/09 |
| CHECKED BY | DATE |
| S.KUNISHI | 1998/04/10 |
| APPROVED BY | DATE |
| M.FUKUSHIMA | 1998/04/10 |
| MATERIAL NO. | |
| SEE TABLE | |
| SIZE | A3 |

| | | |
|---|------------------------|------------------------|
| SCALE 5:1 | DESIGN UNITS METRIC | THIRD ANGLE PROJECTION |
| TITLE 2.5 WIRE TO BOARD CONN. HOUSING | | |
| MOLEX INCORPORATED | | |
| DOCUMENT NO. SD-51191-004 | SHEET NO. 1 OF 1 | |
| THIS DRAWING CONTAINS INFORMATION THAT IS PROPRIETARY TO MOLEX INCORPORATED AND SHOULD NOT BE USED WITHOUT WRITTEN PERMISSION | | |