



产品编号 : [525592652](#)

**Product Description** : Easy-On FFC/FPC Connector, 0.50mm Pitch, Slider Series, Vertical, 3.90mm Height, 26 Circuits, Gold Plating

系列号 : 52559

**状态** : Active

Product Category : FFC / FPC Connectors

---

## 文件和资源

### 图纸

[图纸 525592652\\_sd.pdf](#)

### 3D 模型和设计文件

[2D 图纸 DXF 525592652.dxf](#)

[2D 图纸 DXF PDF 525592652.pdf](#)

[3D模型 525592652\\_stp.zip](#)

### 规格

[应用规格 AS-52559-001-001.pdf](#)


[包装规格 SPK-52559-003-001.pdf](#)

[产品规格 PS-52559-013-001.pdf](#)

---

## 产物环境合规

### 合规

|                    |   |
|--------------------|---|
| GADSL/IMDS         | Compliant with Exemption 44; 33   |
| China RoHS         |  |
| EU ELV             | Not Relevant  |
| Low-Halogen Status | Not Low-Halogen per IEC 61249-2-21  |
| REACH SVHC         | Not Contained per D(2023)8585-DC (23 Jan 2024)  |
| EU RoHS            | Compliant per EU 2015/863   |

### 多部分产品合规性声明

- Eu RoHS
- REACH SVHC
- Low-Halogen
- IPC 1752A Class C

- IPC 1752A Class D
- Molex Product Compliance Declaration
- IEC-62474
- chemSHERPA (xml)

欧盟 RoHS 合格证书

## 产品详情

### 常规

|      |  |
|------|--|
| 状态   | 活动   |
| 类别   | FFC / FPC Connectors   |
| 系列   | 52559  |
| 说明   | Easy-On FFC/FPC Connector, 0.50mm Pitch, Slider Series, Vertical, 3.90mm Height, 26 Circuits, Gold Plating |
| 产品系列 | Slider   |
| 产品系列 | Easy-On FFC FPC Connectors   |
| 产品名称 | Easy-On  |
| UPC  | 822348533794   |

### 机构

|    |        |
|----|--------|
| UL | E29179 |
|----|--------|

### 电气

|         |      |
|---------|------|
| 每触点最大电流 | 0.5A |
| 电压 - 最大 | 50V  |

### 物理

|                   |                 |
|-------------------|-----------------|
| 驱动器类型             | Slider          |
| 回路数 (已载入)         | 26              |
| 接触部位              | 不适用             |
| 耐用性 (插拔次数) - 最多次数 | 20              |
| 阻燃性               | 94V-0           |
| 插配长度              | 3.90mm          |
| 材料 - 金属           | Phosphor Bronze |
| 材料 - 接合部位电镀       | 金牌              |

|           |                       |
|-----------|-----------------------|
| 材料 - 终端电镀 | Tin                   |
| 材料 - 树脂   | Nylon                 |
| 净重        | 330.636/mg            |
| 方向        | 垂直                    |
| 包装形式      | Embossed Tape on Reel |
| PCB 定位器   | 否                     |
| PCB安装     | Surface Mount         |
| PCB 保持力   | 是                     |
| 间距 - 插配接口 | 0.50mm                |
| PCB 极性    | 否                     |
| 可堆叠的      | 否                     |
| 运行温度范围    | -40° to +85° C        |
| 导线/电缆型号   | FFC/FPC               |

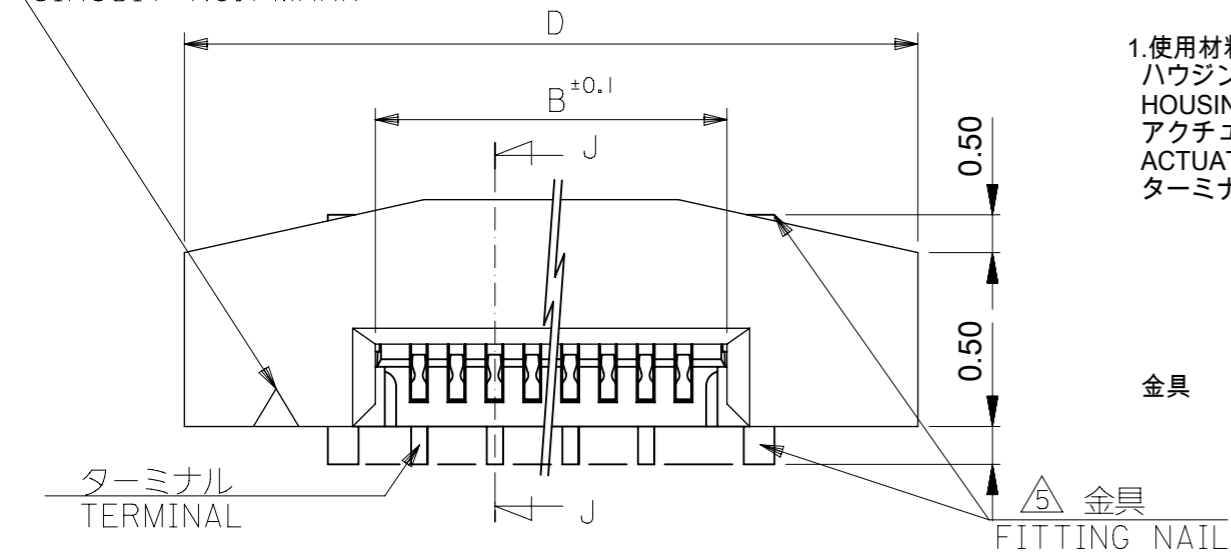
---

## 可配插/可连接使用的产品

### 可配插部件

| 描述                                  | 产品编号         |
|-------------------------------------|--------------|
| 0.50mm Pitch Premo-Flex FFC Jumpers | <u>15020</u> |
| 0.50mm Pitch Premo-Flex FFC Jumpers | <u>15120</u> |

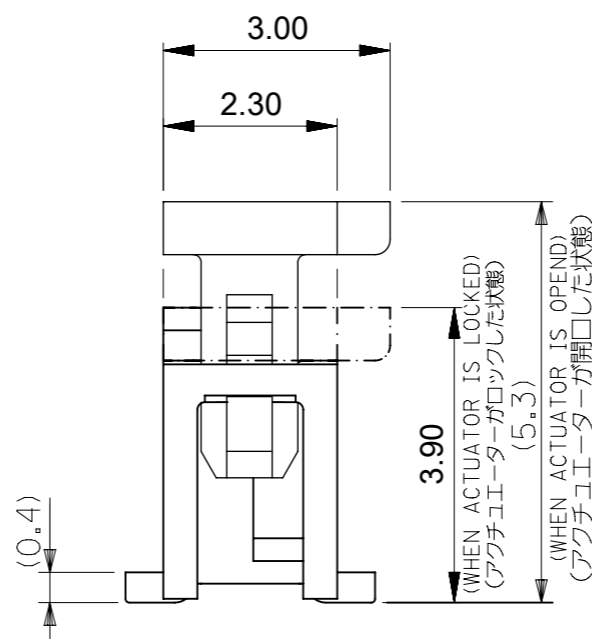
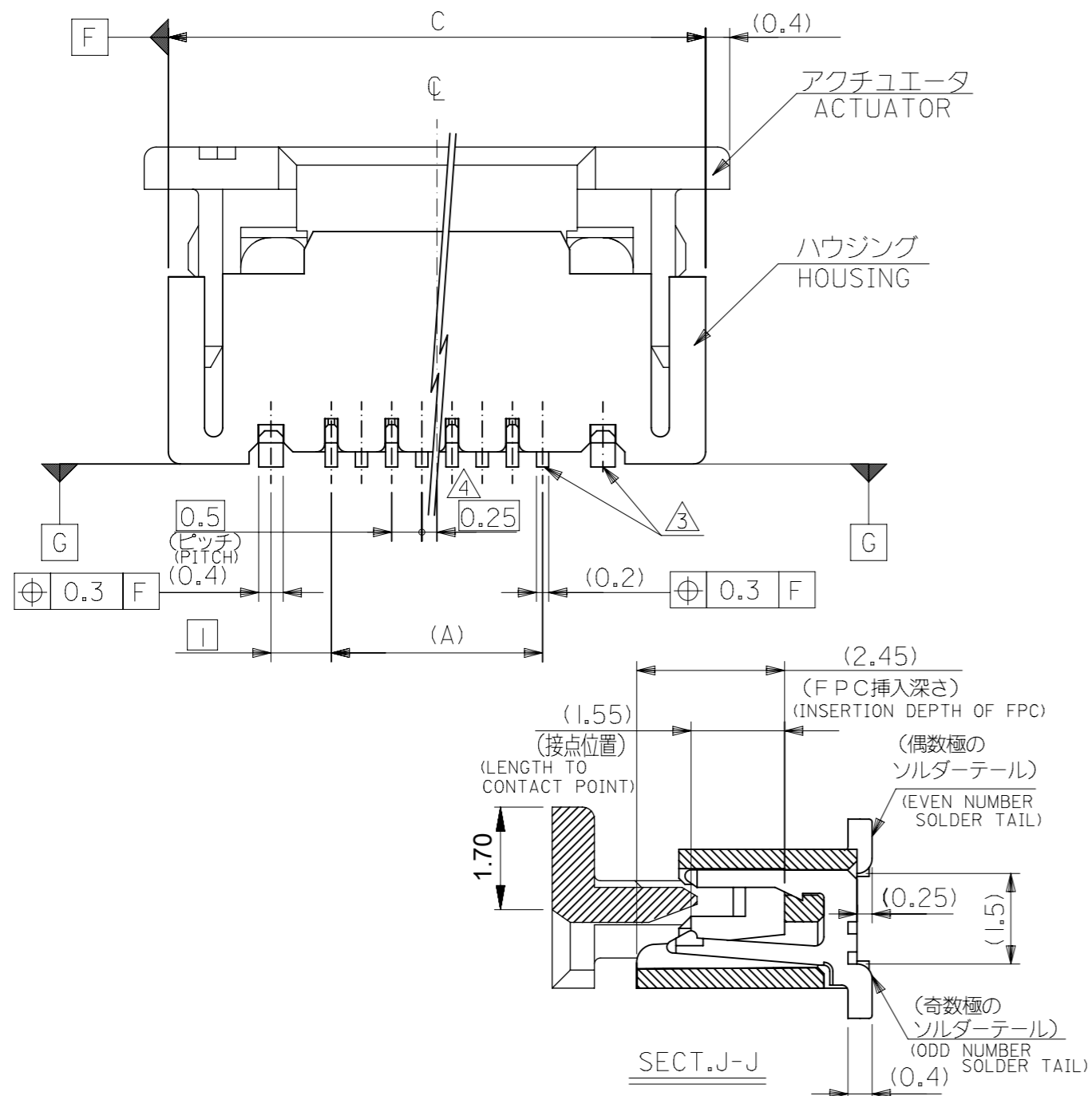
回路番号1用マーク  
CIRCUIT NO.1 MARK



1.使用材料 MATERIAL

- ハウジング : 46ナイロン、UL94V-0
- HOUSING : PA46, UL94V-0
- アクチュエータ : ポリフェニレンサルファイド ( PPS )、UL94V-0
- ACTUATOR : PPS, UL94V-0
- ターミナル : リン青銅(t=0.2) PHOS-BRO(t = 0.2)
- 接点部 金メッキ 0.1マイクロメートル以上
- CONTACT GOLD 0.1 MICROMETER MINIMUM
- 半田付け部 錫メッキ 1.0マイクロメートル以上
- TAIL TIN 1.0 MICROMETER MINIMUM
- ニッケル下地 1.0マイクロメートル以上
- NICKEL(UNDER PLATING) 1.0 MICROMETER MINIMUM
- リン青銅(t=0.4) PHOS-BRO( t = 0.4)
- 錫メッキ 1.0マイクロメートル以上
- TIN 1.0 MICROMETER MINIMUM
- ニッケル下地 1.0マイクロメートル以上
- NICKEL(UNDER PLATING) 1.0 MICROMETER MINIMUM

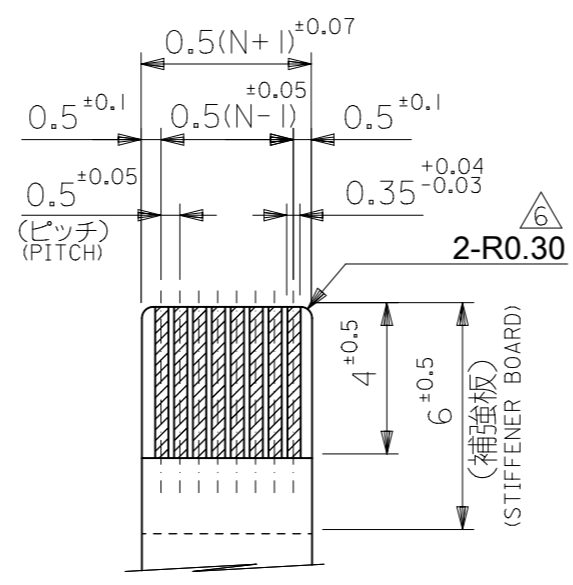
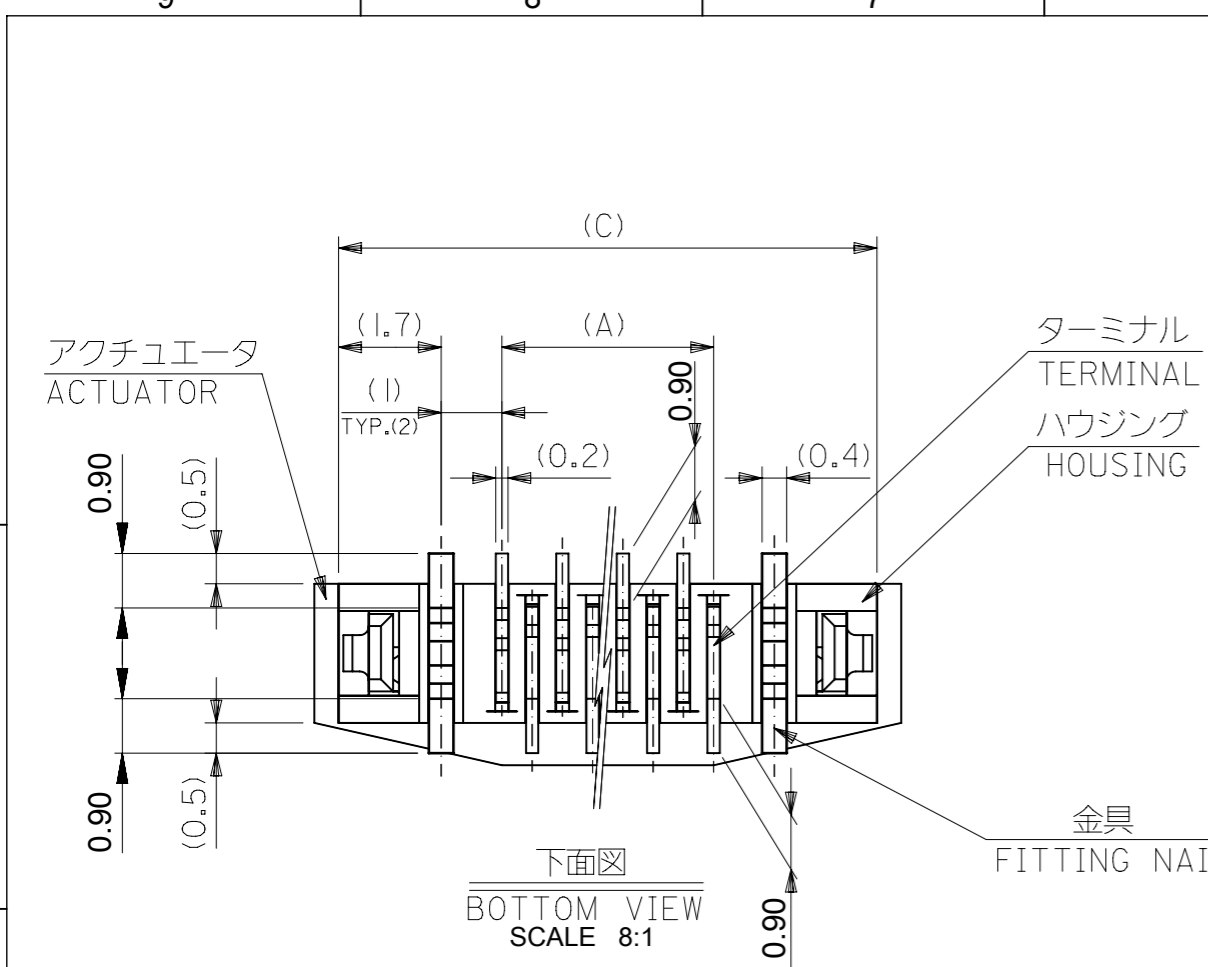
- 2.エンボステープ梱包時はアクチュエータがロックした状態とする。  
IN THE PACKAGE, ACTUATOR OF PART NO.52559-\*\*79 SHOULD BE LOCKED.
- 3.ソルダーテール半田付け面のズレ量、および金具半田付け面のズレ量は基準面 G に対し上方向 0.05MAXIMUM、下方向 0.15MAXIMUMとする。  
MISALIGNMENT OF SOLDER TAILS AND FITTING NAILS FROM DATUM-G UPPER DIRECTION : 0.05MAXIMUM, LOWER DIRECTION : 0.15 MAXIMUM.
- 4.偶数極に適用。  
APPLY FOR EVEN CIRCUIT.
- 5.パターンはく離止め金具。  
FITTING NAIL FOR PREVENTION OF PEELING OF P.W.BOARD PATTERN.
- 6.R0.3は、FPCの導体部にかからないこと  
R0.3 MUST NOT BE OVERLAPPED TO PATTERN OF FPC.



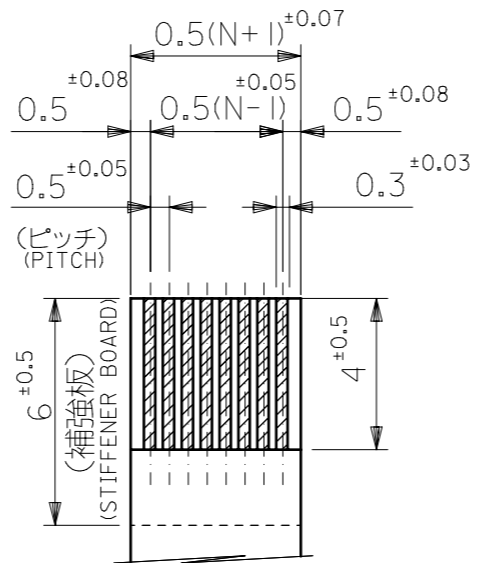
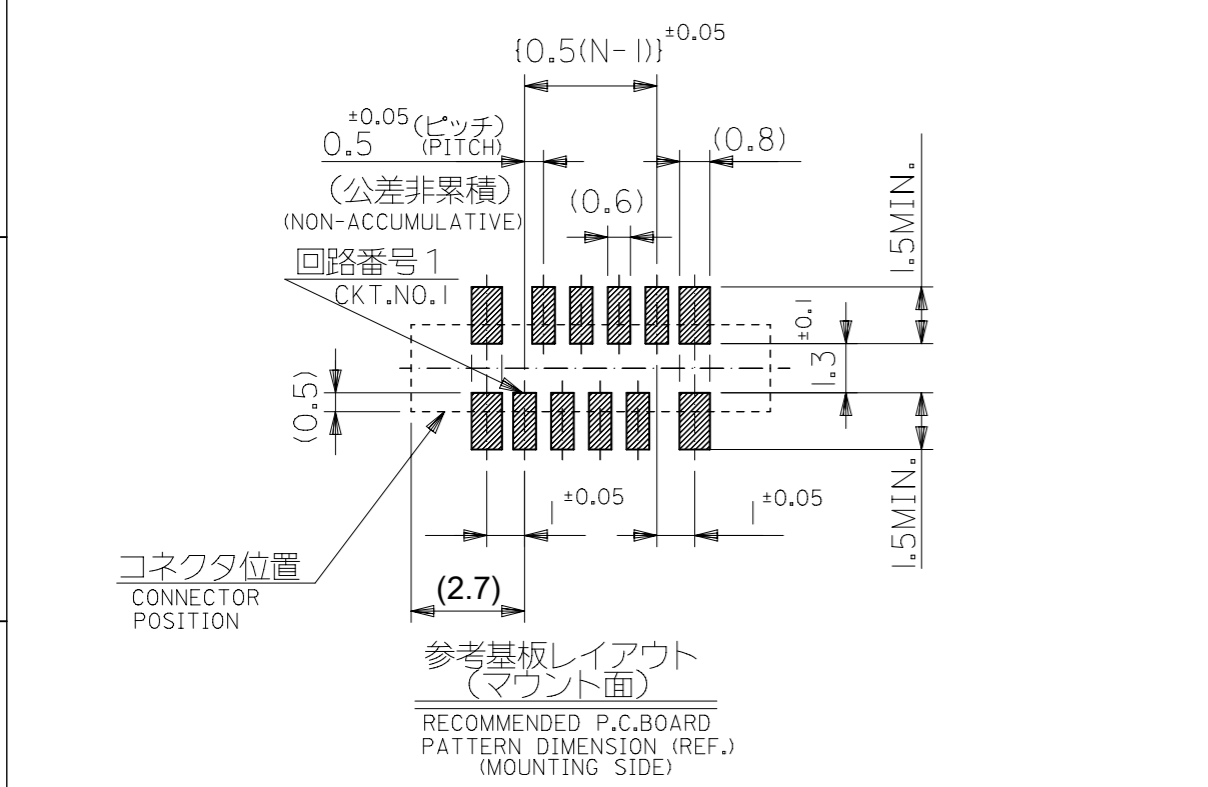
|      |      |       |      |            |      |
|------|------|-------|------|------------|------|
| 25.7 | 24.9 | 20.65 | 19.5 | 52559-4052 | 40   |
| 23.7 | 22.9 | 18.65 | 17.5 | 52559-3652 | 36   |
| 21.7 | 20.9 | 16.65 | 15.5 | 52559-3252 | 32   |
| 20.7 | 19.9 | 15.65 | 14.5 | 52559-3052 | 30   |
| 19.7 | 18.9 | 14.65 | 13.5 | 52559-2852 | 28   |
| 19.2 | 18.4 | 14.15 | 13.0 | 52559-2752 | 27   |
| 18.7 | 17.9 | 13.65 | 12.5 | 52559-2652 | 26   |
| 17.7 | 16.9 | 12.65 | 11.5 | 52559-2452 | 24   |
| 17.2 | 16.4 | 12.15 | 11.0 | 52559-2352 | 23   |
| 16.2 | 15.4 | 11.15 | 10.0 | 52559-2152 | 21   |
| 15.7 | 14.9 | 10.65 | 9.5  | 52559-2052 | 20   |
| 14.2 | 13.4 | 9.15  | 8.0  | 52559-1752 | 17   |
| 13.7 | 12.9 | 8.65  | 7.5  | 52559-1652 | 16   |
| 13.2 | 12.4 | 8.15  | 7.0  | 52559-1552 | 15   |
| 12.7 | 11.9 | 7.65  | 6.5  | 52559-1452 | 14   |
| 11.7 | 10.9 | 6.65  | 5.5  | 52559-1252 | 12   |
| 10.7 | 9.90 | 5.65  | 4.5  | 52559-1052 | 10   |
| 10.2 | 9.40 | 5.15  | 4.0  | 52559-0952 | 9    |
| 8.70 | 7.90 | 3.65  | 2.5  | 52559-0652 | 6    |
| D    | C    | B     | (A)  | ORDER No.  | CKT. |

THIS DRAWING CONTAINS INFORMATION THAT IS PROPRIETARY TO MOLEX ELECTRONIC TECHNOLOGIES, LLC AND SHOULD NOT BE USED WITHOUT WRITTEN PERMISSION

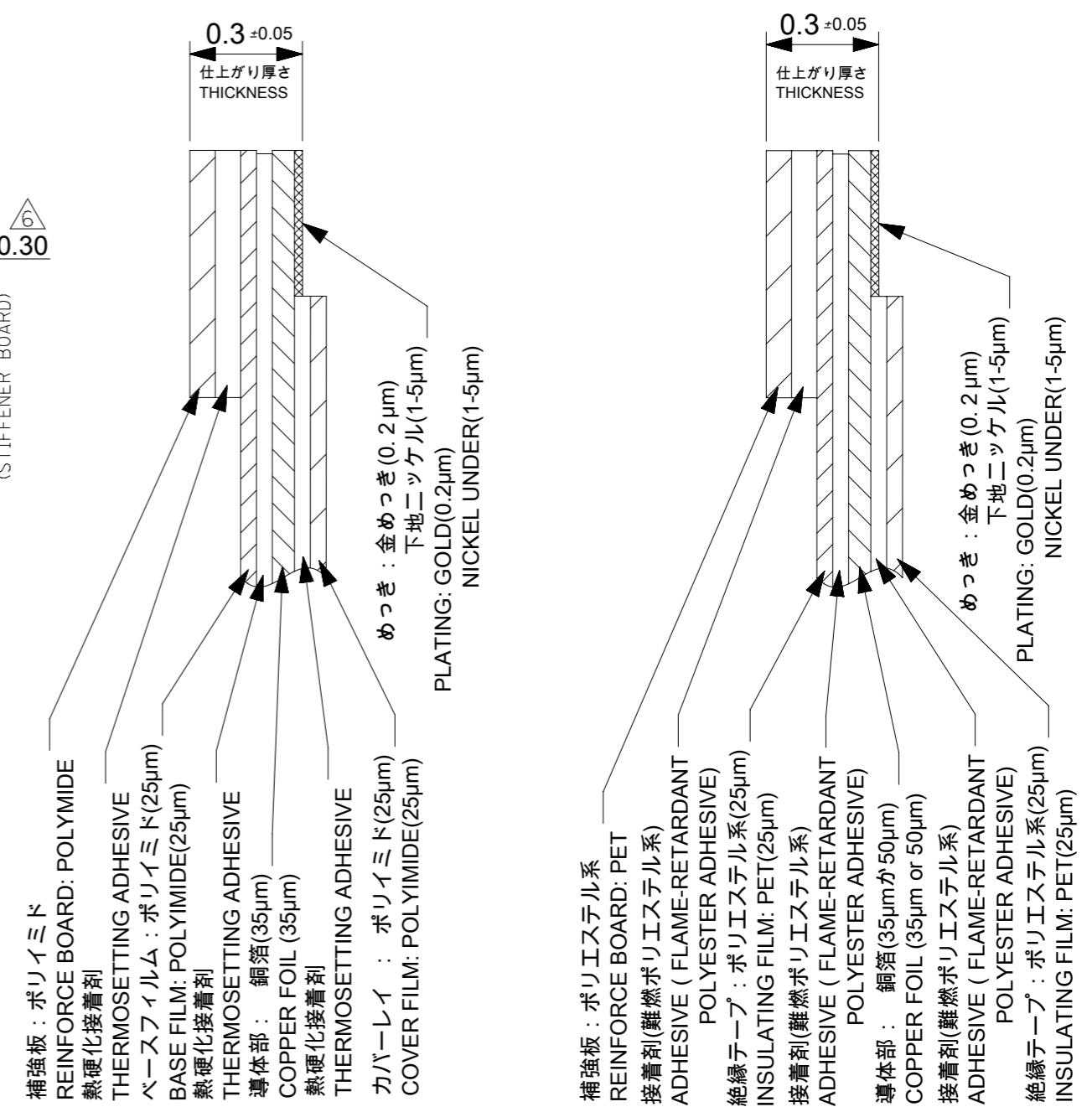
|  |                        |                   |            |  |                |              |
|--|------------------------|-------------------|------------|--|----------------|--------------|
| DIMENSION UNITS                                      | SCALE                  | CURRENT REV DESC: |            | <b>molex</b>   |                |              |
| mm   | 10:1                   |                   |            |  |                |              |
| GENERAL TOLERANCES (UNLESS SPECIFIED)                |                        | EC NO: 176518     |            | 0.5 FPC CONN ASSY ZIF FOR SMT EMBSTP PKG -LEAD FREE- |                |              |
| ANGULAR TOL  | ± 3.0 °                | DRWN: TNAKAGAWA01 | 2018/05/09 |  |                |              |
| 4 PLACES   | ± 0.2                  | CHK'D: RTAKEUCHI  | 2018/05/14 |  |                |              |
| 3 PLACES   | ± 0.2                  | APPR: RTAKEUCHI   | 2018/05/14 |  |                |              |
| 2 PLACES   | ± 0.2                  | INITIAL REVISION: |            | PRODUCT CUSTOMER DRAWING                             |                |              |
| 1 PLACE  | ± 0.25                 | DRWN: MNABEI      | 2004/07/14 | DOCUMENT NUMBER                                      | DOC TYPE       | DOC PART     |
| 0 PLACES   | ± 0.3                  | APPR: NUKITA      | 2004/07/14 | SD-52559-049   | PSD            | 001          |
| DRAFT WHERE APPLICABLE MUST REMAIN WITHIN DIMENSIONS | THIRD ANGLE PROJECTION | DRAWING           | SERIES     | MATERIAL NUMBER                                      | CUSTOMER       | SHEET NUMBER |
|  |                        | A3-SIZE           | 52559      | SEE TABLE  | GENERAL MARKET | 1 OF 6       |



適合FPC推奨寸法  
APPLICABLE FPC  
RECOMMENDED DIMENSION.  
(仕上がり厚さ:  $0.3^{+0.05}$ )  
(THICKNESS:  $0.3^{+0.05}$ )



適合FFC推奨寸法  
APPLICABLE FFC  
RECOMMENDED DIMENSION.  
(仕上がり厚さ:  $0.3^{+0.05}$ )  
(THICKNESS:  $0.3^{+0.05}$ )



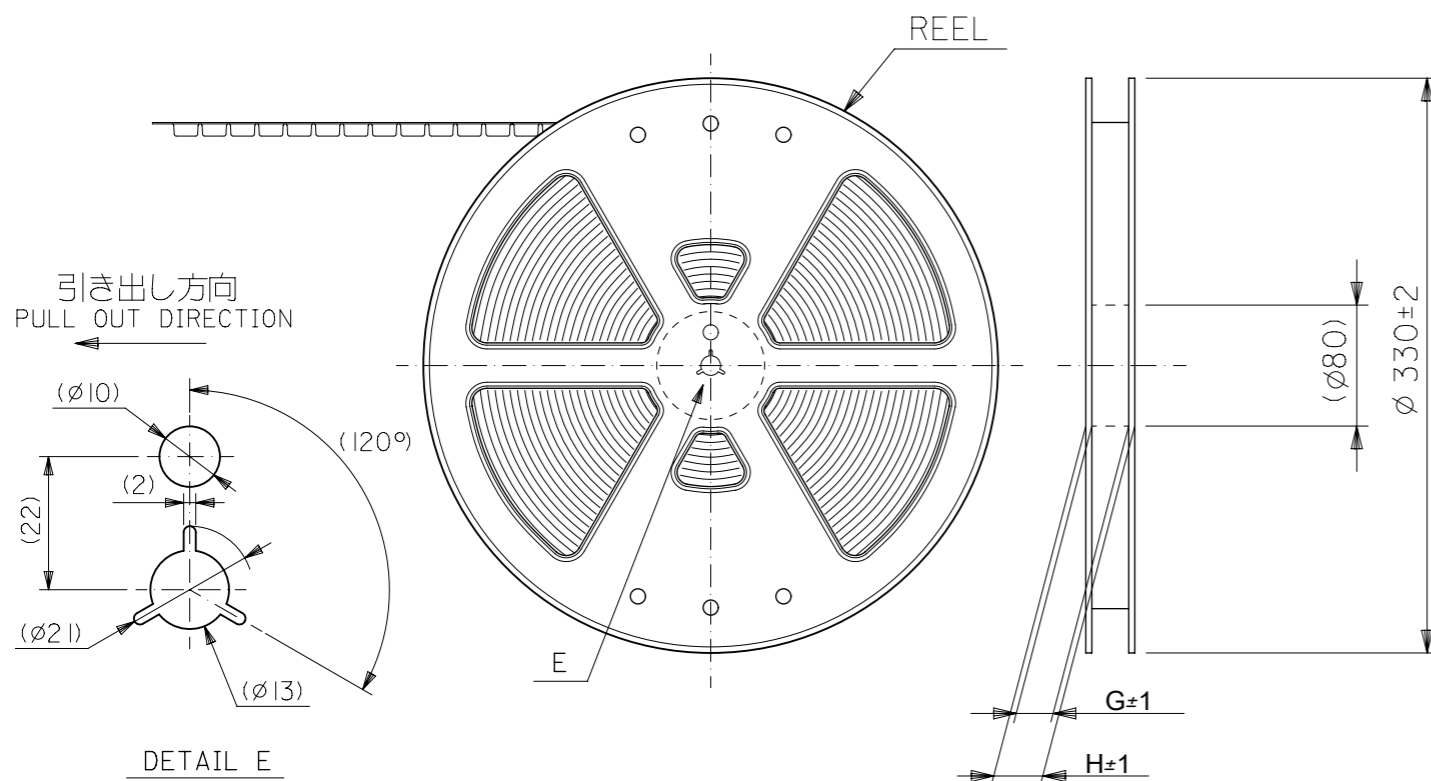
FPC構成推奨仕様  
STRUCTURE OF FPC

FPCについて:  
打抜き方向は導体側から補強板側を推奨致します。  
補強フィルム材質はポリイミドを推奨致します。  
接着剤は熱硬化接着剤を推奨致します。

ABOUT FPC:  
RECOMMENDED PUNCHER DIRECTION: FROM CONDUCTOR SIDE TO STIFFENER BOARD SIDE.  
RECOMMENDED MATERIAL:  
STIFFENER FILM: POLYIMIDE  
BONDING AGENT: THERMOSETTING BONDING AGENT

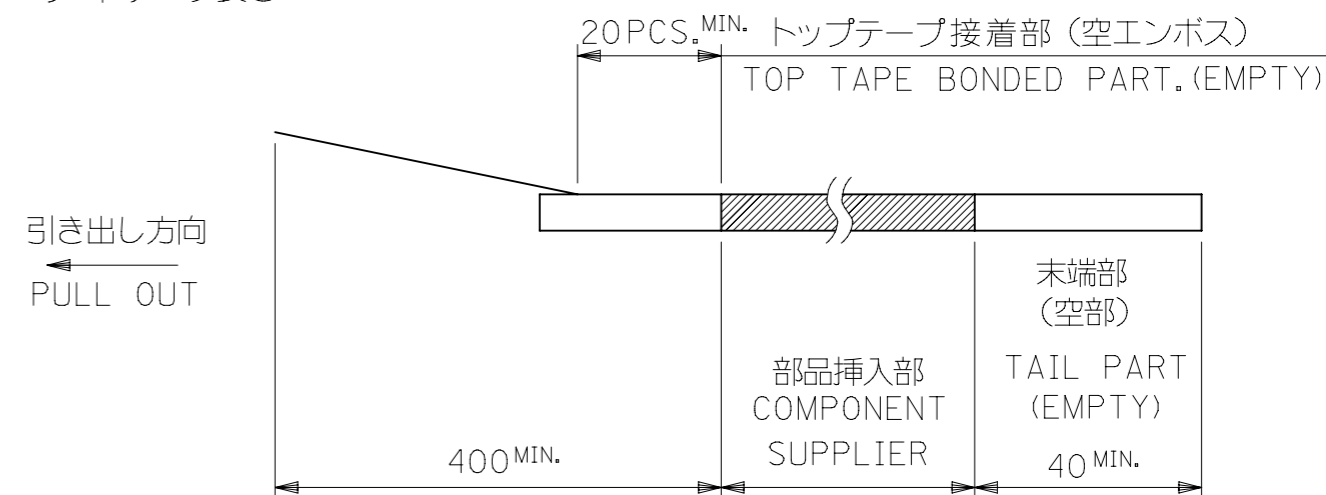
FFC構成推奨仕様  
STRUCTURE OF FFC

|   |  |       |  |   |  |                 |  |             |  |
|---|--|-------|--|---|--|-----------------|--|-------------|--|
| THIS DRAWING CONTAINS INFORMATION THAT IS PROPRIETARY TO MOLEX ELECTRONIC TECHNOLOGIES, LLC AND SHOULD NOT BE USED WITHOUT WRITTEN PERMISSION |  |       |  |   |  |                 |  |             |  |
| DIMENSION UNITS   |  | SCALE |  | CURRENT REV DESC:   |  |                 |  |             |  |
| mm  |  | 5:1   |  | <p><b>molex</b></p> <p>0.5 FPC CONN ASSY ZIF<br/>FOR SMT EMBSTP PKG -LEAD FREE-</p> <p>PRODUCT CUSTOMER DRAWING</p> <p>DOCUMENT NUMBER: SD-52559-049</p> <p>DOC TYPE: PSD</p> <p>DOC PART: 001</p> <p>REVISION: L</p> <p>SHEET NUMBER: 2 OF 6</p> |  |                 |  |             |  |
| GENERAL TOLERANCES (UNLESS SPECIFIED)   |  |       |  |   |  |                 |  |             |  |
| ANGULAR TOL $\pm 3.0^\circ$   |  |       |  |   |  |                 |  |             |  |
| 4 PLACES $\pm 0.2$  |  |       |  |   |  |                 |  |             |  |
| 3 PLACES $\pm 0.2$  |  |       |  |   |  |                 |  |             |  |
| 2 PLACES $\pm 0.2$  |  |       |  | INITIAL REVISION:   |  | DOCUMENT NUMBER |  | DOC TYPE    |  |
| 1 PLACE $\pm 0.25$  |  |       |  | DRWN: MNABEI  |  | 2004/07/14      |  | PSD         |  |
| 0 PLACES $\pm 0.3$  |  |       |  | APPR: NUKITA  |  | 2004/07/14      |  | 001         |  |
| DRAFT WHERE APPLICABLE MUST REMAIN WITHIN DIMENSIONS  |  |       |  | THIRD ANGLE PROJECTION  |  | DRAWING         |  | SERIES      |  |
|   |  |       |  | A3-SIZE   |  | 52559           |  | SEE SHEET 1 |  |



注記 NOTES

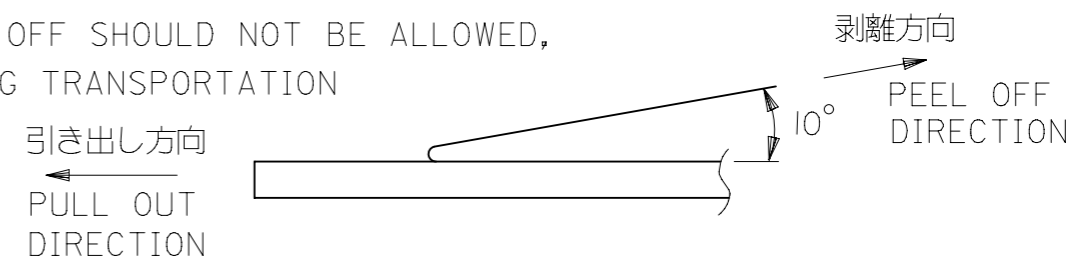
1. 梱包状態はアクチュエータがロックした状態とする。  
IN THE PACKAGE, ACTUATOR SHOULD BE LOCKED.
2. 梱包数量：1000個/リール  
NUMBER OF CONNECTORS: 1000PCS/REEL
3. リードテープ長さ LEAD TAPE LENGTH



4. トップテープの剥離強度：(剥離方向は下図参照)  
0. 1N~1.3N {10gf~130gf} 尚、本規格値は、出荷時に適用。

(但し、輸送時に剥離が発生しない事。)

PEELING OFF FORCE OF TOP TAPE  
0.1N~1.3N(10gf~130gf)(PEELING DIRECTION AS SHOWN IN FOLLOWING FIG.)  
THIS REQUIREMENT SHOULD BE APPLIED AT SHIPMENT  
PEEL OFF SHOULD NOT BE ALLOWED,  
DURING TRANSPORTATION

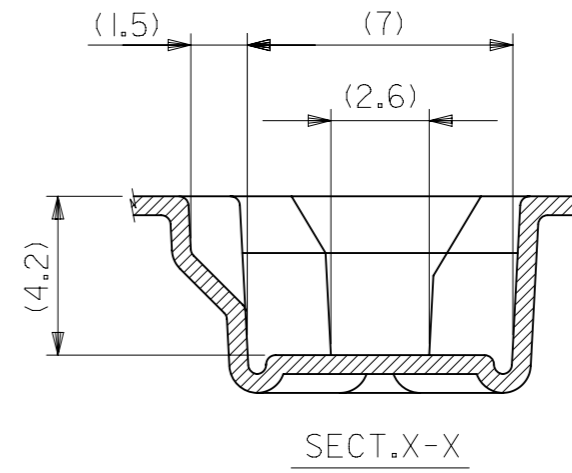
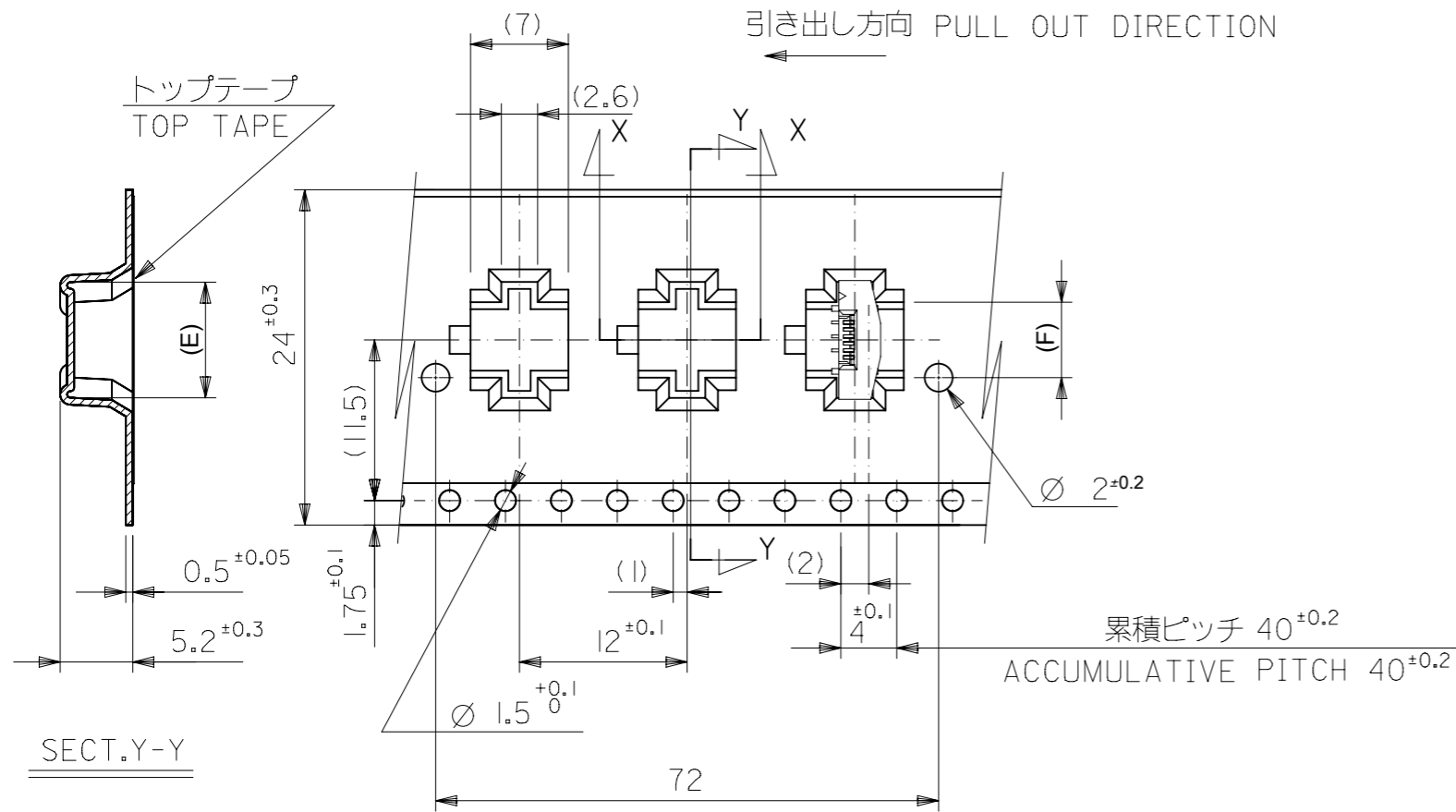


5. 材料  
キャリアテープ：ポリプロピレン (PP)  
トップテープ：PET, PE, PEF  
リール：ポリスチレン (PS) <リサイクル材を含む>

MATERIAL CARRIER TAPE: POLYPROPYLENE  
TOP TAPE: PET, PE, PEF  
REEL: POLYSTYRENE (PS)  
<RECYCLE MATERIAL CONTAINED>

6. 本製品は52559-\*\*53のエンボステープ違い品である。  
THIS PRODUCT IS EMBOSSED TAPE DIFFERENCE ARTICLE OF 52559-\*\*53.
7. 本製品は乾燥剤入り、ハイバリア梱包仕様である。  
THIS PRODUCT IS HIGH BARRIER PACKAGE WITH DESICCANT.

|   |  |       |  |                              |  |                 |  |                                |  |
|---|--|-------|--|------------------------------|--|-----------------|--|--------------------------------|--|
| THIS DRAWING CONTAINS INFORMATION THAT IS PROPRIETARY TO MOLEX ELECTRONIC TECHNOLOGIES, LLC AND SHOULD NOT BE USED WITHOUT WRITTEN PERMISSION |  |       |  |                              |  |                 |  |                                |  |
| DIMENSION UNITS   |  | SCALE |  | CURRENT REV DESC:            |  |                 |  | <b>molex</b>                   |  |
| mm  |  | ±     |  |                              |  |                 |  |                                |  |
| GENERAL TOLERANCES (UNLESS SPECIFIED)   |  |       |  | EC NO: 176518                |  |                 |  | 0.5 FPC CONN ASSY ZIF          |  |
| ANGULAR TOL ± 3.0°  |  |       |  | DRWN: TNAKAGAWA01 2018/05/09 |  |                 |  | FOR SMT EMBSTP PKG -LEAD FREE- |  |
| 4 PLACES ± 0.2  |  |       |  | CHK'D: RTAKEUCHI 2018/05/14  |  |                 |  | PRODUCT CUSTOMER DRAWING       |  |
| 3 PLACES ± 0.2  |  |       |  | APPR: RTAKEUCHI 2018/05/14   |  |                 |  | DOCUMENT NUMBER                |  |
| 2 PLACES ± 0.2  |  |       |  | INITIAL REVISION:            |  |                 |  | SD-52559-049                   |  |
| 1 PLACE ± 0.25  |  |       |  | DRWN: MNABEI 2004/07/14      |  |                 |  | DOC TYPE                       |  |
| 0 PLACES ± 0.3  |  |       |  | APPR: NUKITA 2004/07/14      |  |                 |  | PSD                            |  |
| DRAFT WHERE APPLICABLE MUST REMAIN WITHIN DIMENSIONS  |  |       |  | THIRD ANGLE PROJECTION       |  | DRAWING         |  | DOC PART                       |  |
|   |  |       |  | A3-SIZE                      |  | SERIES          |  | REVISION                       |  |
|   |  |       |  | 52559                        |  | MATERIAL NUMBER |  | 001                            |  |
|   |  |       |  | SEE SHEET 4-6                |  | CUSTOMER        |  | L                              |  |
|   |  |       |  | GENERAL MARKET               |  | SHEET NUMBER    |  | 3 OF 6                         |  |

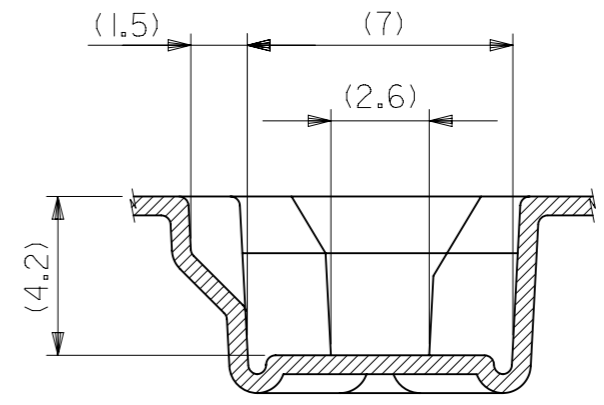
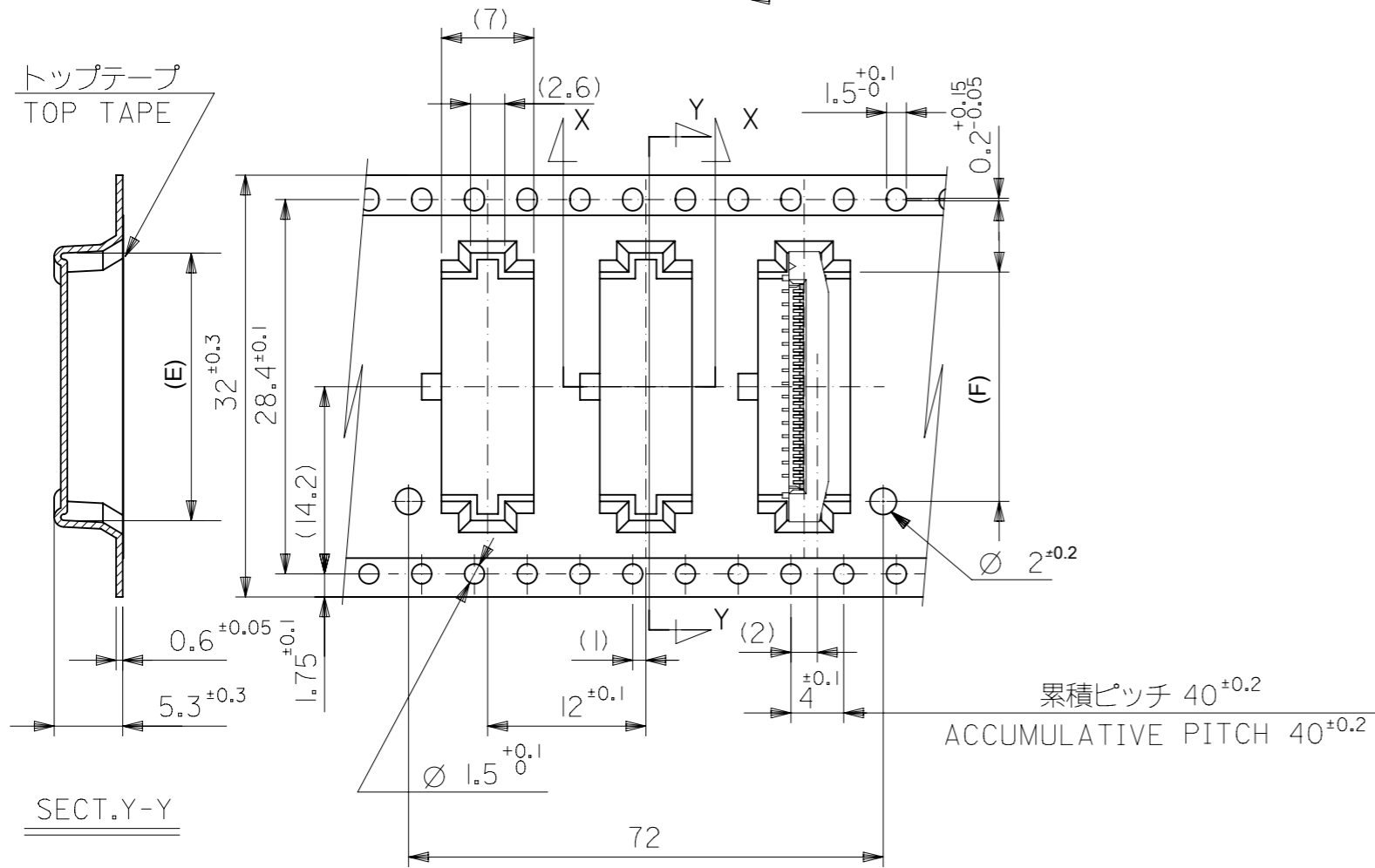


|                    |      |      |      |      |            |     |           |      |
|--------------------|------|------|------|------|------------|-----|-----------|------|
| 24                 | 29.4 | 25.4 | 14.4 | 17.3 | 52559-2452 | 24  |           |      |
|                    |      |      | 13.9 | 16.8 | 52559-2352 | 23  |           |      |
|                    |      |      | 12.9 | 15.8 | 52559-2152 | 21  |           |      |
|                    |      |      | 12.4 | 15.3 | 52559-2052 | 20  |           |      |
|                    |      |      | 10.9 | 13.8 | 52559-1752 | 17  |           |      |
|                    |      |      | 10.4 | 13.3 | 52559-1652 | 16  |           |      |
|                    |      |      | 9.9  | 12.8 | 52559-1552 | 15  |           |      |
|                    |      |      | 9.4  | 12.3 | 52559-1452 | 14  |           |      |
|                    |      |      | 8.4  | 11.3 | 52559-1252 | 12  |           |      |
|                    |      |      | 7.4  | 10.3 | 52559-1052 | 10  |           |      |
|                    |      |      | 6.9  | 9.8  | 52559-0952 | 9   |           |      |
|                    |      |      | 5.4  | 8.3  | 52559-0652 | 6   |           |      |
| CARRIER TAPE WIDTH |      |      | H    | G    | (F)        | (E) | ORDER No. | CKT. |

THIS DRAWING CONTAINS INFORMATION THAT IS PROPRIETARY TO MOLEX ELECTRONIC TECHNOLOGIES, LLC AND SHOULD NOT BE USED WITHOUT WRITTEN PERMISSION

|  |                    |                              |         |                          |                 |                |  |
|--|--------------------|------------------------------|---------|--------------------------|-----------------|----------------|--|
| DIMENSION UNITS<br><b>mm</b>                         | SCALE<br><b>±±</b> | CURRENT REV DESC:            |         | <b>molex</b>             |                 |                |  |
| GENERAL TOLERANCES (UNLESS SPECIFIED)                |                    | EC NO: 176518                |         |                          |                 |                | 0.5 FPC CONN ASSY ZIF FOR SMT EMBSTP PKG -LEAD FREE- |
| ANGULAR TOL  | ± 3.0 °            | DRWN: TNAKAGAWA01 2018/05/09 |         | PRODUCT CUSTOMER DRAWING |                 |                |  |
| 4 PLACES   | ± 0.2              | CHK'D: RTAKEUCHI 2018/05/14  |         | DOCUMENT NUMBER          |                 |                |  |
| 3 PLACES   | ± 0.2              | APPR: RTAKEUCHI 2018/05/14   |         | SD-52559-049             |                 |                |  |
| 2 PLACES   | ± 0.2              | INITIAL REVISION:            |         | DOC TYPE                 | DOC PART        | REVISION       |  |
| 1 PLACE  | ± 0.25             | DRWN: MNABEI 2004/07/14      |         | PSD                      | 001             | L              |  |
| 0 PLACES   | ± 0.3              | APPR: NUKITA 2004/07/14      |         | SHEET NUMBER             |                 |                |  |
| DRAFT WHERE APPLICABLE MUST REMAIN WITHIN DIMENSIONS |                    | THIRD ANGLE PROJECTION       | DRAWING | SERIES                   | MATERIAL NUMBER | CUSTOMER       | SHEET NUMBER   |
|  |                    |                              | A3-SIZE | 52559                    | SEE TABLE       | GENERAL MARKET | 4 OF 6   |

引き出し方向 PULL OUT DIRECTION



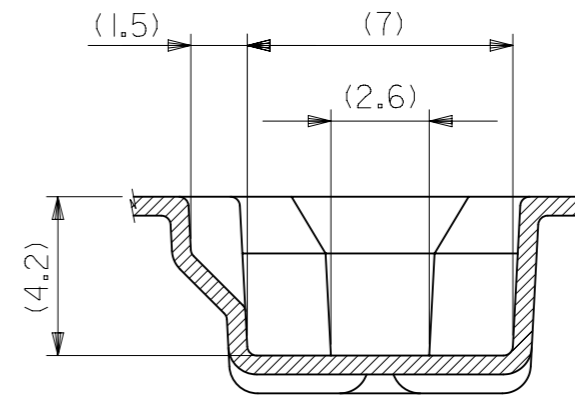
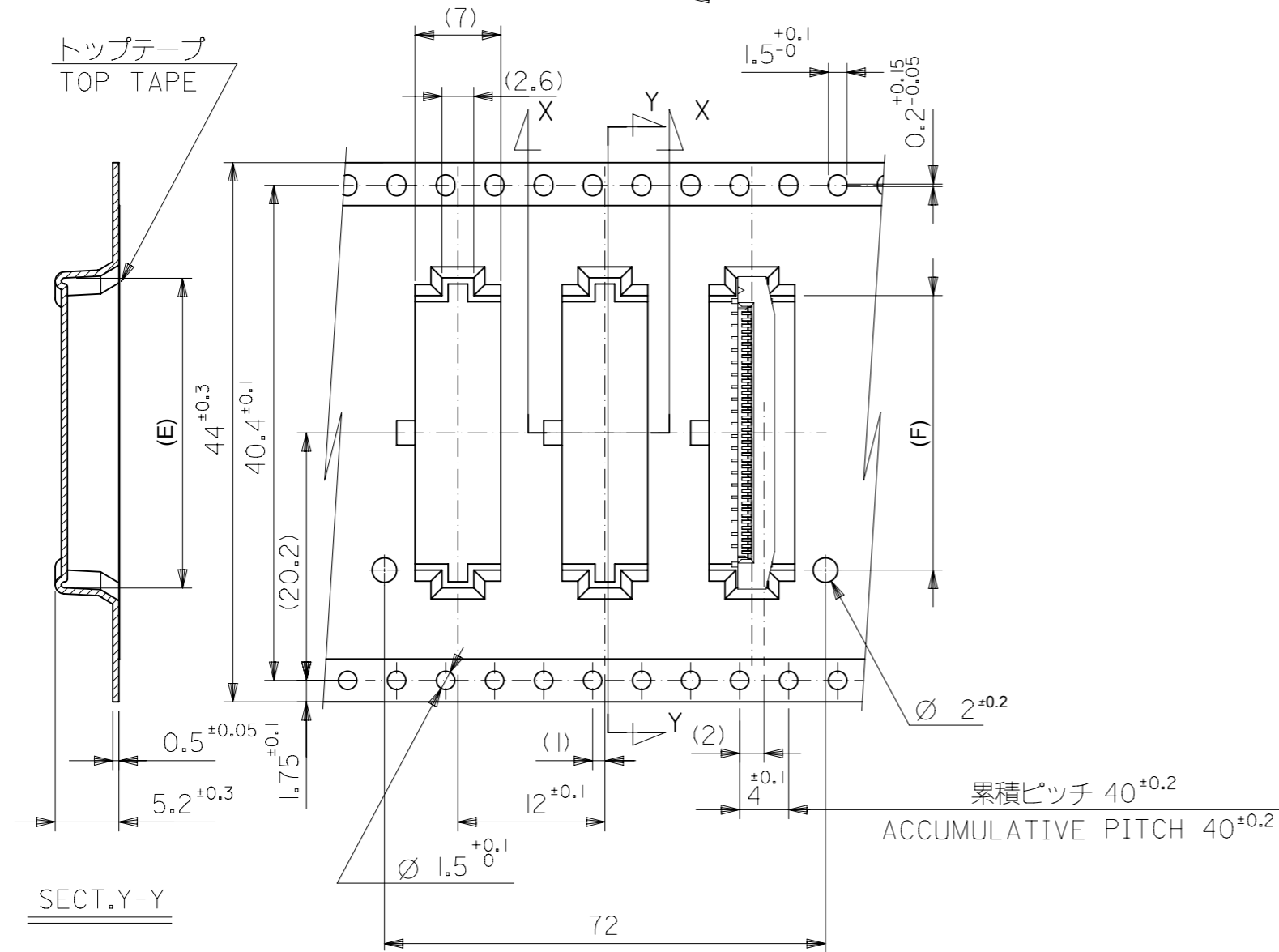
32mm幅キャリアテープ  
32mm WIDTH CARRIER TAPE

|                    |      |      |      |      |            |     |           |      |
|--------------------|------|------|------|------|------------|-----|-----------|------|
| 32                 | 37.4 | 33.4 | 18.4 | 21.3 | 52559-3252 | 32  |           |      |
|                    |      |      | 17.4 | 20.3 | 52559-3052 | 30  |           |      |
|                    |      |      | 16.4 | 19.3 | 52559-2852 | 28  |           |      |
|                    |      |      | 15.9 | 18.8 | 52559-2752 | 27  |           |      |
|                    |      |      | 15.4 | 18.3 | 52559-2652 | 26  |           |      |
| CARRIER TAPE WIDTH |      |      | H    | G    | (F)        | (E) | ORDER No. | CKT. |

|   |  |                        |  |                              |  |                            |  |   |  |
|---|--|------------------------|--|------------------------------|--|----------------------------|--|---|--|
| THIS DRAWING CONTAINS INFORMATION THAT IS PROPRIETARY TO MOLEX ELECTRONIC TECHNOLOGIES, LLC AND SHOULD NOT BE USED WITHOUT WRITTEN PERMISSION |  |                        |  |                              |  |                            |  |   |  |
| DIMENSION UNITS<br>mm   |  | SCALE<br>1:1           |  | CURRENT REV DESC:            |  |                            |  | <b>molex</b>  |  |
| GENERAL TOLERANCES (UNLESS SPECIFIED)   |  |                        |  | EC NO: 176518                |  |                            |  |   |  |
| ANGULAR TOL ± 3.0°  |  |                        |  | DRWN: TNAKAGAWA01 2018/05/09 |  |                            |  | 0.5 FPC CONN ASSY ZIF<br>FOR SMT EMBSTP PKG -LEAD FREE- |  |
| 4 PLACES ± 0.2  |  |                        |  | CHK'D: RTAKEUCHI 2018/05/14  |  |                            |  |   |  |
| 3 PLACES ± 0.2  |  |                        |  | APPR: RTAKEUCHI 2018/05/14   |  |                            |  | PRODUCT CUSTOMER DRAWING                                |  |
| 2 PLACES ± 0.2  |  |                        |  | INITIAL REVISION:            |  |                            |  |   |  |
| 1 PLACE ± 0.25  |  |                        |  | DRWN: MNABEI 2004/07/14      |  |                            |  | DOCUMENT NUMBER   |  |
| 0 PLACES ± 0.3  |  |                        |  | APPR: NUKITA 2004/07/14      |  |                            |  | SD-52559-049  |  |
| DRAFT WHERE APPLICABLE MUST REMAIN WITHIN DIMENSIONS  |  | THIRD ANGLE PROJECTION |  | DRAWING<br>A3-SIZE           |  | SERIES<br>52559            |  | MATERIAL NUMBER<br>SEE TABLE                            |  |
|   |  |                        |  |                              |  | CUSTOMER<br>GENERAL MARKET |  | DOC TYPE<br>PSD   |  |
|   |  |                        |  |                              |  |                            |  | DOC PART<br>001   |  |
|   |  |                        |  |                              |  |                            |  | REVISION<br>L   |  |
|   |  |                        |  |                              |  |                            |  | SHEET NUMBER<br>5 OF 6                                  |  |



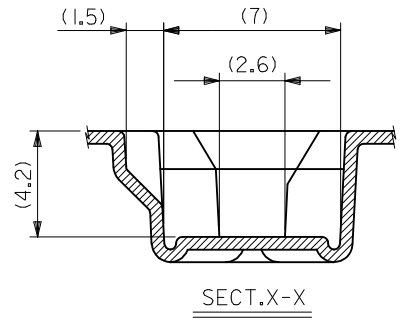
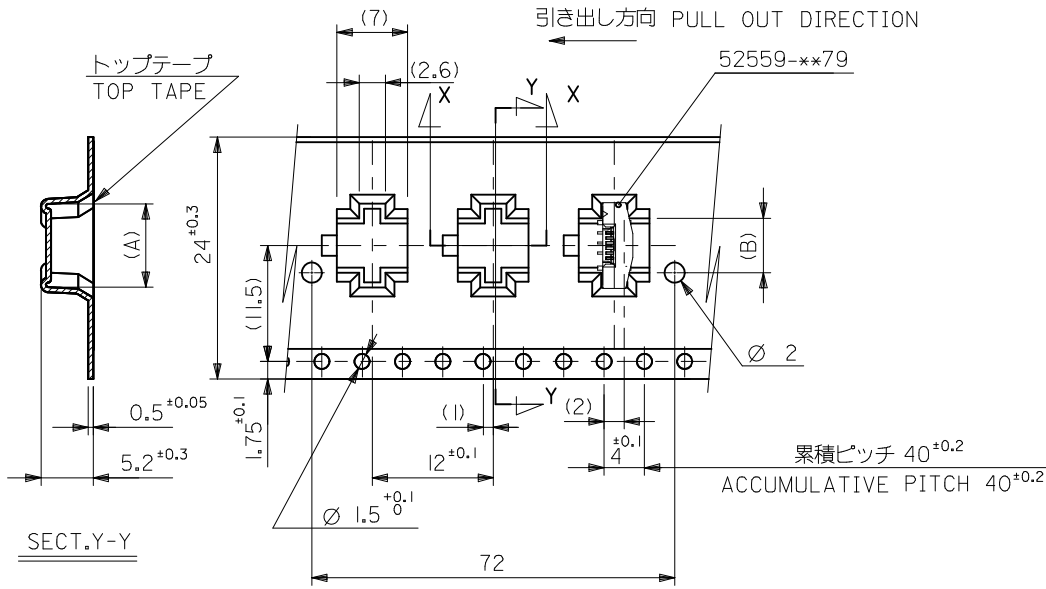
引き出し方向 PULL OUT DIRECTION



|                    |      |      |      |      |            |      |
|--------------------|------|------|------|------|------------|------|
| 44                 | 49.4 | 45.4 | 22.4 | 25.3 | 52559-4052 | 40   |
|                    |      |      | 20.4 | 23.3 | 52559-3652 | 36   |
| CARRIER TAPE WIDTH |      |      | H    | G    | (F)        | (E)  |
|                    |      |      |      |      | ORDER No.  | CKT. |

|   |        |  |         |          |           |                |
|---|--------|--|---------|----------|-----------|----------------|
| THIS DRAWING CONTAINS INFORMATION THAT IS PROPRIETARY TO MOLEX ELECTRONIC TECHNOLOGIES, LLC AND SHOULD NOT BE USED WITHOUT WRITTEN PERMISSION |        |  |         |          |           |                |
| DIMENSION UNITS   | SCALE  | CURRENT REV DESC:  |         |          |           |                |
| mm  | ±±     | <b>molex</b><br>0.5 FPC CONN ASSY ZIF<br>FOR SMT EMBSTP PKG -LEAD FREE-                                    |         |          |           |                |
| GENERAL TOLERANCES (UNLESS SPECIFIED)   |        |  |         |          |           |                |
| ANGULAR TOL   | ± 3.0° | EC NO: 176518<br>DRWN: TNAKAGAWA01 2018/05/09<br>CHK'D: RTAKEUCHI 2018/05/14<br>APPR: RTAKEUCHI 2018/05/14 |         |          |           |                |
| 4 PLACES  | ± 0.2  | INITIAL REVISION:<br>DRWN: MNABEI 2004/07/14<br>APPR: NUKITA 2004/07/14                                    |         |          |           |                |
| 3 PLACES  | ± 0.2  |  |         |          |           |                |
| 2 PLACES  | ± 0.2  | DOCUMENT NUMBER  |         | DOC TYPE | DOC PART  | REVISION       |
| 1 PLACE   | ± 0.25 | SD-52559-049   |         | PSD      | 001       | L              |
| 0 PLACES  | ± 0.3  | MATERIAL NUMBER  |         | CUSTOMER |           | SHEET NUMBER   |
| DRAFT WHERE APPLICABLE MUST REMAIN WITHIN DIMENSIONS  |        | THIRD ANGLE PROJECTION   | DRAWING | SERIES   | SEE TABLE | GENERAL MARKET |
|   |        |  | A3-SIZE | 52559    | 6 OF 6    |                |

|                 |    |              |            |          |
|-----------------|----|--------------|------------|----------|
| DOCUMENT STATUS | P1 | RELEASE DATE | 2018/05/14 | 04:50:40 |
|-----------------|----|--------------|------------|----------|



SECT.Y-Y

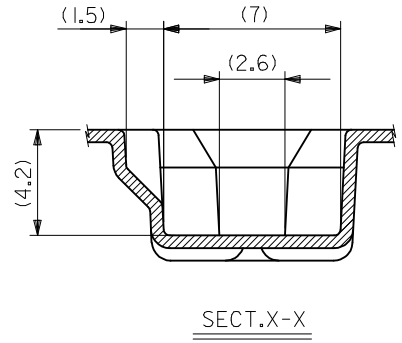
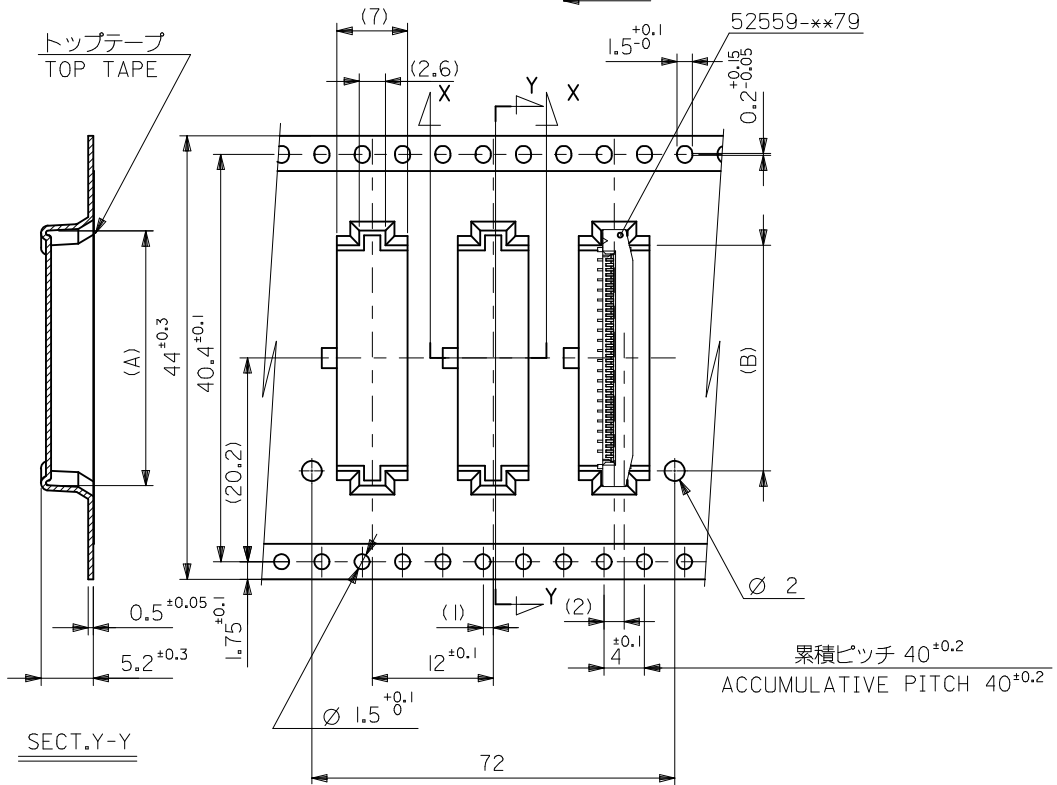
24mm幅キャリアテープ  
24mm WIDTH CARRIER TAPE

|     |      |            |     |     |            |    |
|-----|------|------------|-----|-----|------------|----|
| 24  | 29.4 | 25.4       | (B) | (A) | 52559-2452 | 24 |
|     |      |            | (B) | (A) | 52559-2352 | 23 |
|     |      |            | (B) | (A) | 52559-2152 | 21 |
|     |      |            | (B) | (A) | 52559-2052 | 20 |
|     |      |            | (B) | (A) | 52559-1752 | 17 |
|     |      |            | (B) | (A) | 52559-1652 | 16 |
|     |      |            | (B) | (A) | 52559-1552 | 15 |
|     |      |            | (B) | (A) | 52559-1452 | 14 |
|     |      |            | (B) | (A) | 52559-1252 | 12 |
|     |      |            | (B) | (A) | 52559-1052 | 10 |
| (B) | (A)  | 52559-0952 | 9   |     |            |    |
| (B) | (A)  | 52559-0652 | 6   |     |            |    |

|   |                                       |           |  |                            |              |  |   |  |                        |           |  |
|---|---------------------------------------|-----------|--|----------------------------|--------------|--|---|--|------------------------|-----------|--|
| REVISED<br>EC NO: J2016-0020<br>DRWN: YUHASEGAWA 2015/07/06<br>CHKD:<br>APPR: YNOGAWA 2015/07/10<br>K | GENERAL TOLERANCES (UNLESS SPECIFIED) |           |  | DIMENSION STYLE<br>MM ONLY |              | SCALE<br>---   | DESIGN UNITS<br>METRIC  |  | THIRD ANGLE PROJECTION |           |  |
|   | 0.25 UNDER                            | UNDER     | ±0.03  | DRAWN BY                   | DATE         | TITLE  |   |  |                        |           |  |
|   | 0.25 OVER                             | 0.5 UNDER | ±0.05  | MNABEI                     | '04/07/13    | 0.5 FPC CONN ASSY ZIF FOR SMT EMBSTP PKG -LEAD FREE- |   |  |                        |           |  |
|   | 0.5 OVER                              | 1.0 UNDER | ±0.1   | CHECKED BY                 | DATE         | molex  |   |  |                        |           |  |
| 1.0 OVER  | 10 UNDER                              | ±0.2      | KTOJO  | '04/07/13                  | APPROVED BY  |  | DATE  |  | DOCUMENT NO.           | SHEET NO. |  |
| 10 OVER   | 30 UNDER                              | ±0.25     | NUKITA   | '04/07/13                  | MATERIAL NO. |  | SEE CHART   |  | SD-52559-049           | 2 OF 4    |  |
| 30 OVER   |                                       | ±0.3      |  |                            | SIZE<br>A3   |  | THIS DRAWING CONTAINS INFORMATION THAT IS PROPRIETARY TO MOLEX INCORPORATED AND SHOULD NOT BE USED WITHOUT WRITTEN PERMISSION |  |                        |           |  |
|   | ANGULAR                               | ±3 °      | DRAFT WHERE APPLICABLE MUST REMAIN WITHIN DIMENSIONS |                            |              |  |   |  |                        |           |  |



引き出し方向 PULL OUT DIRECTION



44mm幅キャリアテープ  
44mm WIDTH CARRIER TAPE

|                                |      |      |      |      |              |             |
|--------------------------------|------|------|------|------|--------------|-------------|
| 44                             | 49.4 | 45.4 | 22.4 | 25.3 | 52559-4052   | 40          |
| キャリアテープ幅<br>CARRIER TAPE WIDTH | D    | C    | (B)  | (A)  | 52559-3652   | 36          |
|                                |      |      |      |      | MATERIAL NO. | CIRCUIT NO. |

|   |                                       |              |                 |   |              |  |                        |
|---|---------------------------------------|--------------|-----------------|---|--------------|--|------------------------|
| REVISED<br>EC NO: J2016-0020<br>DRWN: YUASEGAWA 2015/07/06<br>CHKD:<br>APPR: YNOGAWA 2015/07/10 | GENERAL TOLERANCES (UNLESS SPECIFIED) |              | DIMENSION STYLE |   | SCALE        | DESIGN UNITS   | THIRD ANGLE PROJECTION |
|   | 0.25 UNDER UNDER ±0.03                |              | MM ONLY         |   | ---          | METRIC   | ☉ □                    |
|   | 0.25 OVER 0.5 UNDER ±0.05             |              | DRAWN BY        |   | DATE         | TITLE  |                        |
|   | 0.5 OVER 1.0 UNDER ±0.1               |              | MNABEI          |   | '04/07/13    | 0.5 FPC CONN ASSY ZIF FOR SMT EMBSTP PKG -LEAD FREE- |                        |
| 1.0 OVER 10 UNDER ±0.2  |                                       | CHECKED BY   |                 | DATE  | MATERIAL NO. |  | CIRCUIT NO.            |
| 10 OVER 30 UNDER ±0.25  |                                       | KTOJO        |                 | '04/07/13   | SD-52559-049 |  | 4 OF 4                 |
| 30 OVER ±0.3  |                                       | APPROVED BY  |                 | DATE  | DOCUMENT NO. |  | SHEET NO.              |
| ANGULAR ±3 °  |                                       | NUKITA       |                 | '04/07/13   | SEE CHART    |  |                        |
| DRAFT WHERE APPLICABLE MUST REMAIN WITHIN DIMENSIONS  |                                       | MATERIAL NO. |                 | THIS DRAWING CONTAINS INFORMATION THAT IS PROPRIETARY TO MOLEX INCORPORATED AND SHOULD NOT BE USED WITHOUT WRITTEN PERMISSION |              |  |                        |
| K   |                                       | SIZE         |                 | A3  |              |  |                        |