



产品编号 : 5601220102

Product Description : CTX-J 280 Female Terminal, Tin Plated, 2.00-2.50mm² Wire Size

系列号 : 560122

状态 : Active

Product Category : Crimp Terminals


文件和资源

图纸

图纸 [5601220102_sd.pdf](#)

产物环境合规

合规

GADSL/IMDS	Not Relevant
China RoHS	
EU ELV	Compliant per 2000/53/EC
Low-Halogen Status	Not Relevant
REACH SVHC	Not Contained per D(2023)8585-DC (23 Jan 2024)
EU RoHS	Compliant per EU 2015/863

多部分产品合规性声明

- Eu RoHS
- REACH SVHC
- Low-Halogen

- IPC 1752A Class C
- IPC 1752A Class D
- Molex Product Compliance Declaration
- IEC-62474
- chemSHERPA (xml)

欧盟 RoHS 合格证书

产品详情

常规

状态	活动
----	----

类别	Crimp Terminals
系列	560122
说明	CTX-J 280 Female Terminal, Tin Plated, 2.00-2.50mm ² Wire Size
应用	Automotive, Signal, Wire-to-Board
产品系列	Compactus
产品名称	Compactus, CTX-J 280
UPC	887191426846

电气

每触点最大电流	15.0A
电压 - 最大	250V

物理

性别	女
材料 - 金属	Copper Alloy
材料 - 接合部位电镀	Tin
材料 - 终端电镀	Tin
净重	0.510/g
包装形式	Reel
终端界面类型	Crimp or Compression
导线绝缘直径	不适用
线径规格 (AWG)	不适用
线缆尺寸mm ²	不适用

施工工具

全局

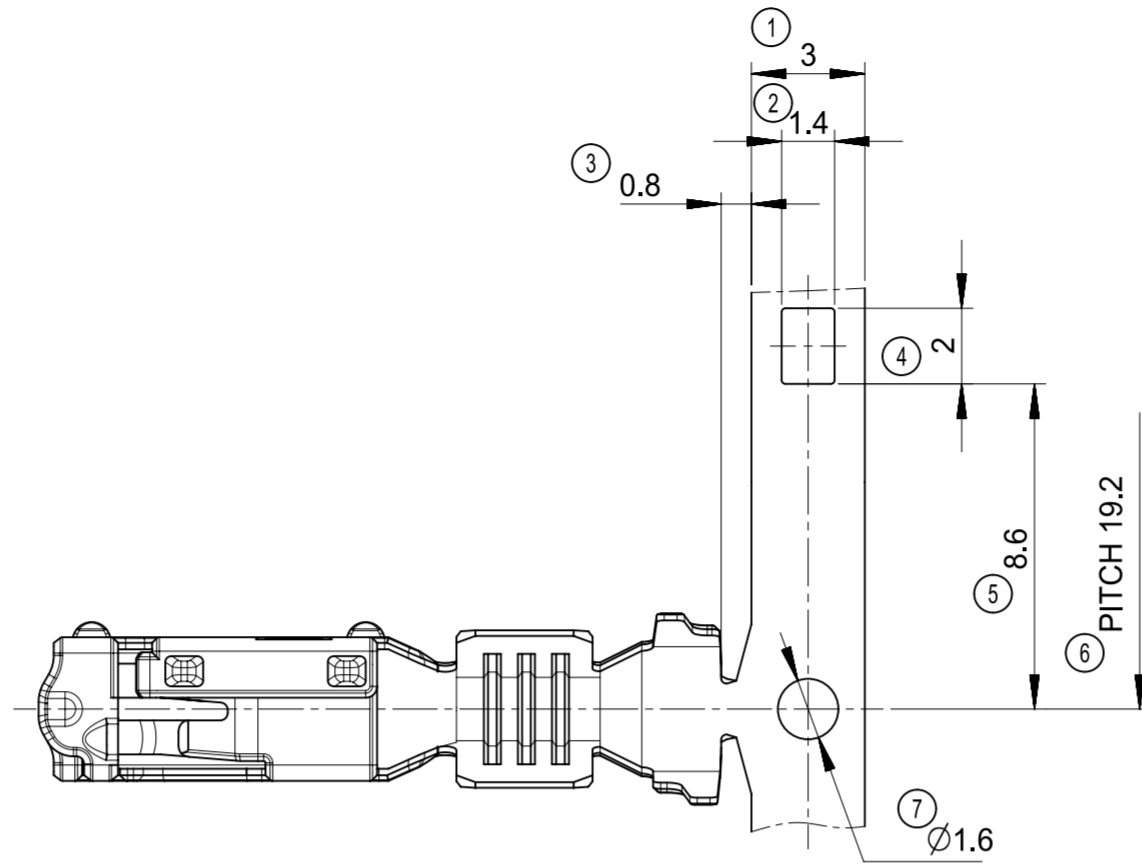
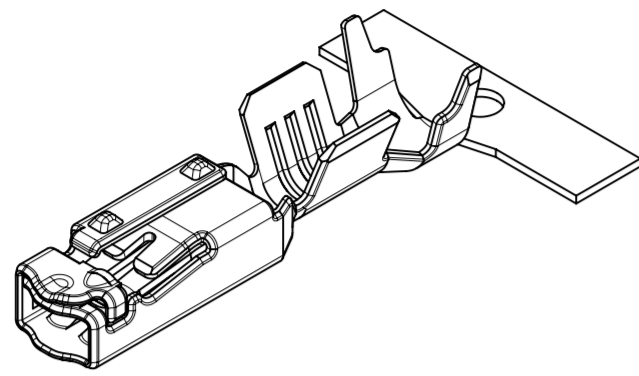
描述	产品编号
Hand Crimp Tool for CTX-J 280 Receptacle Terminal Sealed, 2.00mm ² Wire	<u>2002182500</u>
Extractor Tool for CTX-J 280 Receptacle Crimp Terminal for Compactus Connector	<u>638247800</u>

施工工具

日本

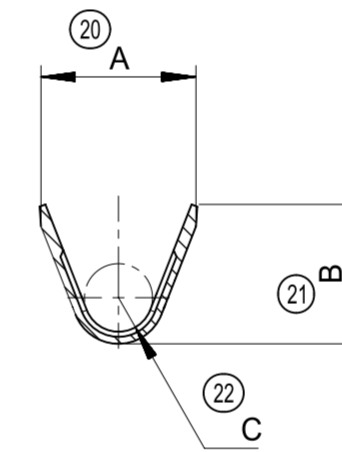
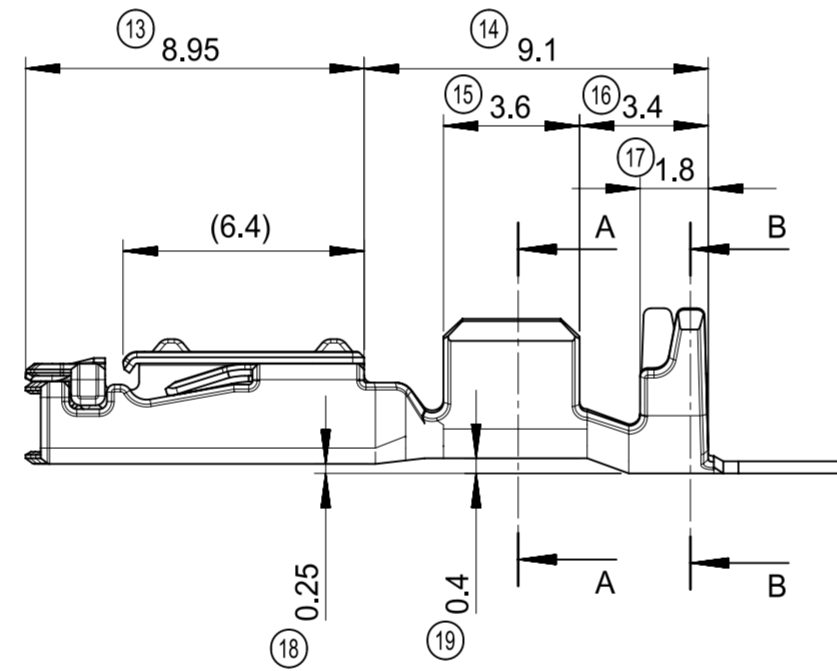
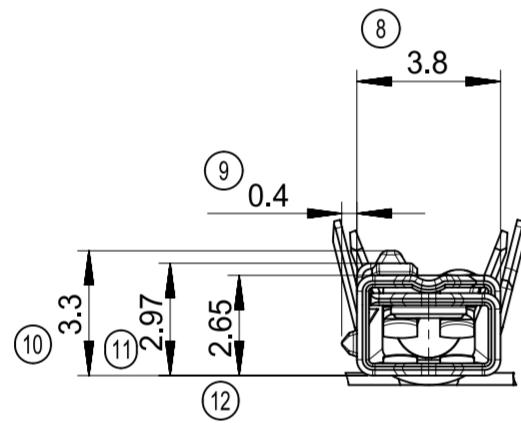
描述	产品编号
S-1 Applicator for CTX-J 280 Receptacle Terminals	<u>5781383700</u>

This document was generated on Jun 30, 2024

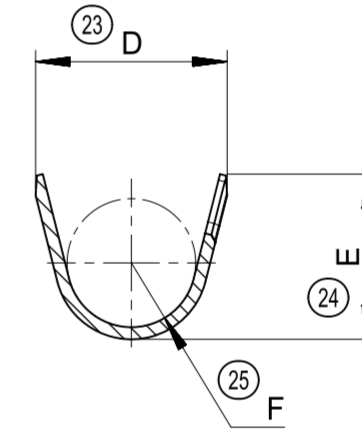


NOTES:
 1. 材料：銅合金
 2. めっき仕様：すずめっき
 3. 最新の適用電線と仕様は、端子の圧着仕様書：AS-560122-001を確認すること

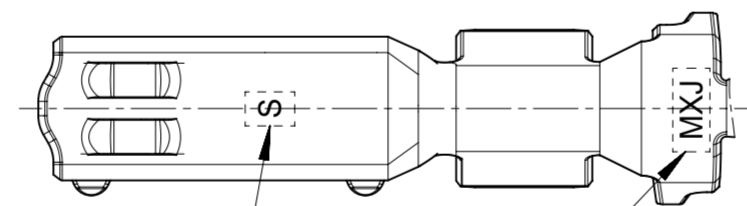
NOTES:
 1. MATERIAL : COPPER ALLOY
 2. PLATING SPECIFICATION : Tin PLATING
 3. PLEASE CHECK THE TERMINAL CRIMPING SPECIFICATIONS : AS-560122-001 FOR THE LATEST APPLICABLE WIRES AND OTHER CRIMPING SPECIFICATION.



SECTION A-A



SECTION B-B



バレルサイズマーク
GRIP CODE

ロゴマーク
LOGO MARK

端子品番 PART NO.	バレル記号 GRIP CODE	適用電線 APPLICABLE WIRE SIZE		寸法 DIMENSION					
				A	B	C	D	E	F
560122-0102	S	AVSS, AVSSH, AESSX	2.0mm ²	4.17	(3.7)	R0.9	5.07	(4.37)	R1.7
		FLRY-B	2.0 - 2.5mm ²						

THIS DRAWING CONTAINS INFORMATION THAT IS PROPRIETARY TO MOLEX ELECTRONIC TECHNOLOGIES, LLC AND SHOULD NOT BE USED WITHOUT WRITTEN PERMISSION

DIMENSION UNITS: mm
 SCALE: 5:1

CURRENT REV DESC:

molex

EC NO: 620314
 DRWN: GABE 2019/07/04
 CHK'D: TIIDA01 2019/07/17
 APPR: TOSADA 2019/07/18

CTX-J 280 RECEPTACLE
 TERMINAL SEALED

PRODUCT CUSTOMER DRAWING

GENERAL TOLERANCES (UNLESS SPECIFIED)		
10 UNDER		±0.3
10 OVER	30 UNDER	±0.4
30 OVER		±0.5
ANGULAR ±5°		

INITIAL REVISION:
 DRWN: TIIDA01 2014/02/06
 APPR: MAYAMAMOTO 2015/11/09

DOCUMENT NUMBER	DOC TYPE	DOC PART	REVISION
SD-560122-001	PSD	001	B

THIRD ANGLE PROJECTION	DRAWING	SERIES	MATERIAL NUMBER	CUSTOMER	SHEET NUMBER
	A2-SIZE	560122		GENERAL MARKET	1 OF 1