



产品编号 : 561618081

系列号 : 56161

Product Category : Crimp Terminals

Product Description : 2.00mm Pitch  
DuraClik Crimp Terminal, Female, 22-26  
AWG, Gold (Au) Plating, Reel

状态 : Active

Packaging Alternative : 561618181 (Bag)

---

## 文件和资源

### 图纸

图纸 561618081\_sd.pdf

### 3D 模型和设计文件

3D模型 561618081\_stp.zip

### 规格

应用规格 AS-54992-005-001.pdf

包装规格 561619200-200.pdf

产品规格 PS-502351-002-001.pdf

### 模具规格

应用模具规格 571753710ATS-000.pdf


应用模具规格 571753710ATS-J-000.pdf

压接规格 CS-56161-003-001.pdf

---

## 产物环境合规

### 合规

GADSL/IMDS	Not Relevant
China RoHS	
EU ELV	Not Relevant
Low-Halogen Status	Low-Halogen per IEC 61249-2-21
REACH SVHC	Not Contained per D(2023)8585-DC (23 Jan 2024)
EU RoHS	Compliant per EU 2015/863

### 多部分产品合规性声明

- Eu RoHS
- REACH SVHC
- Low-Halogen

- IPC 1752A Class C
- IPC 1752A Class D
- Molex Product Compliance Declaration
- IEC-62474
- chemSHERPA (xml)

欧盟 RoHS 合格证书

## 产品详情

### 常规

状态	活动
类别	Crimp Terminals
系列	56161
说明	2.00mm Pitch DuraClik Crimp Terminal, Female, 22-26 AWG, Gold (Au) Plating, Reel
应用	Automotive, Signal, Wire-to-Board
产品系列	DuraClik Connector System
产品名称	DuraClik
UPC	800756476667

### 电气

每触点最大电流	3.0A
电压 - 最大	125V

### 物理

性别	女
材料 - 金属	Phosphor Bronze
材料 - 接合部位电镀	金牌
材料 - 终端电镀	Nickel
净重	18.300/mg
包装形式	Reel
终端界面类型	Crimp or Compression
导线绝缘直径	1.40mm max.
线径规格 (AWG)	22, 24, 26
线缆尺寸mm <sup>2</sup>	不适用

---

## 可连接使用部件

描述	产品编号
DuraClik Single Row Receptacle Housings	<u>502351</u>

---

## 施工工具

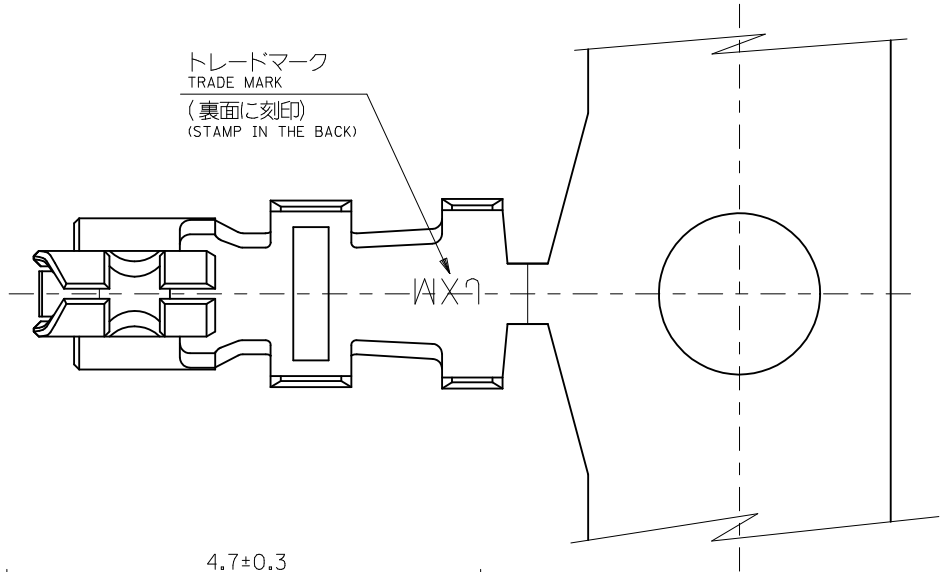
### 全局

描述	产品编号
FineAdjust Applicator for 2.00mm Pitch Wire-to-Board Crimp Receptacle Terminal and SMEC Crimp Receptacle Terminals, 22-26 AWG and AVSS 0.3 Wires	<u>2037021900</u>
PremiumGrade Hand Crimp Tool for Micro-Latch, DuraClik, and Servo Motor Encoder Female Terminals, 22-26 AWG	<u>638235100</u>
T2 Terminator Die	<u>638528000</u>

## 施工工具

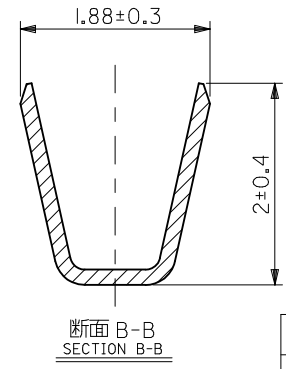
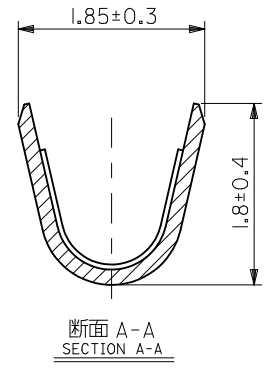
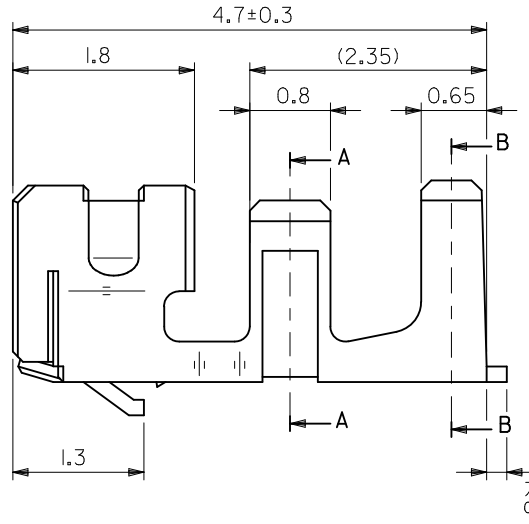
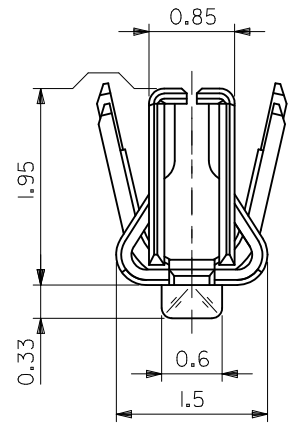
### 日本

描述	产品编号
S-1 Applicator for DuraClik and Mi II Terminals, 22-26 AWG	<u>571753710</u>



注記  
NOTES

1. 材質：リン青銅、t = 0.152  
MATERIAL : PHOSPHOR BRONZE, t = 0.152
2. メッキ仕様  
PLATING  
金メッキ : 0.1µm MIN.  
GOLD : 0.1µm MIN.  
ニッケルメッキ : 1.5µm MIN. (下地メッキ)  
NICKEL : 1.5µm MIN. (UNDER PLATING)
3. 適用ハウジング : 54992-09\*\*, 502351-\*\*00  
APPLICABLE HOUSING : 54992-09\*\*, 502351-\*\*00
4. ELV 及び RoHS 適合品  
ELV AND RoHS COMPLIANT.



バラ状 LOOSE	56161-8181
連鎖状 CHAIN	56161-8081
端子形状 FORM	オーダー番号 ORDER No.

CONNECTOR SERIES No. 56161-8\*81

材料 MATERIAL	注記参照 SEE NOTES
仕上げ FINISH	注記参照 SEE NOTES
適用電線範囲 WIRE RANGE	AWG #22~#26
被服外径範囲 INSURATION RANGE	φ1.4 MAX.

REVISED EC NO.: J2011-0785 DRWK:KAWASHIO CHKD:KASAKAWA APPR:NUKITA	2010/12/08	2010/12/09	2010/12/09
	DESCRIPTION	GENERAL TOLERANCES (UNLESS SPECIFIED)	DIMENSION STYLE MM ONLY
	10 UNDER	±0.2	DRAWN BY KKOBAYASHI
	10 OVER 30 UNDER	±0.25	DATE 2001/10/05
30 OVER	±0.3	CHECKED BY NMATSUURA	DATE 2001/10/05
ANGULAR	±3 °	APPROVED BY YOITO	DATE 2001/10/05
DRAFT WHERE APPLICABLE MUST REMAIN WITHIN DIMENSIONS		MATERIAL NO. SEE CHART	SCALE 20:1
SIZE A3	THIS DRAWING CONTAINS INFORMATION THAT IS PROPRIETARY TO MOLEX INCORPORATED AND SHOULD NOT BE USED WITHOUT WRITTEN PERMISSION		DESIGN UNITS METRIC

THIRD ANGLE PROJECTION		SMEC (SERVO MOTOR ENCODER CONN.) CRIMP RECEPTACLE	
MOLEX INCORPORATED		SD-56161-002	
SHEET NO. 1 OF 1		DOCUMENT NO.	