



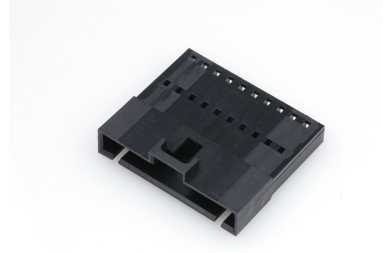
产品编号：[701070009](#)

Product Description：SL Wire-to-Wire Crimp Housing, Single Row, Version A, without Mounting Ears, 10 Circuits, Black

系列号：70107

状态：Active

Product Category：Connector Housings



文件和资源

图纸

[图纸 701070009_sd.pdf](#)

[包装设计图 PK-70107-100-001.pdf](#)

3D 模型和设计文件

[3D模型 701070009_stp.zip](#)

规格

[产品规格 PS-70400-001.pdf](#)

产物环境合规

合规

GADSL/IMDS	Not Relevant
China RoHS	
EU ELV	Not Relevant
Low-Halogen Status	Not Low-Halogen per IEC 61249-2-21
REACH SVHC	Not Contained per D(2023)3788-DC (14 Jun 2023)
EU RoHS	Compliant per EU 2015/863

多部分产品合规性声明

- Eu RoHS
- REACH SVHC
- Low-Halogen

多部分行业合规性文件

- IPC 1752A Class C
- IPC 1752A Class D

- Molex Product Compliance Declaration

- IEC-62474

- chemSHERPA (xml)

欧盟 RoHS 合格证书

产品详情

常规

状态	活动
类别	Connector Housings
系列	70107
说明	SL Wire-to-Wire Crimp Housing, Single Row, Version A, without Mounting Ears, 10 Circuits, Black
应用	Signal, Wire-to-Wire
个评论	Version A without Mounting Ears
产品系列	SL Modular Connectors
产品名称	SL
UPC	800753634428

机构

CSA	LR19980
UL	E29179

物理

电路数 (最多)	10
颜色-树脂	黑色
阻燃性	94V-0
性别	Plug
符合灼热丝规范	否
锁定插接部位	是
材料 - 树脂	Polyester
净重	1.800/g
行数	1
包装形式	Bag
面板安装式	否
间距 - 插配接口	2.54mm

有极性的插配件	是
可堆叠的	否
运行温度范围	-40° to +105° C

可配插/可连接使用的产品

可配插部件

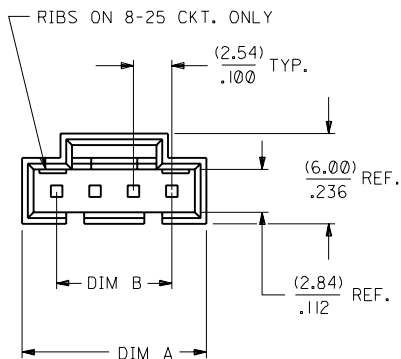
描述	产品编号
SL Single Row Crimp Housings and CPA Retainers	<u>70066</u>
SL Single Row Female Insulation Displacement Connector Assemblies	<u>70400</u>
SL Single Row Female Receptacles	<u>70430</u>

可连接使用部件

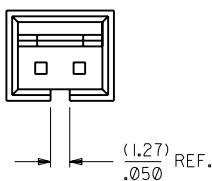
描述	产品编号
SL Male Terminals	<u>70021</u>

NOTES:

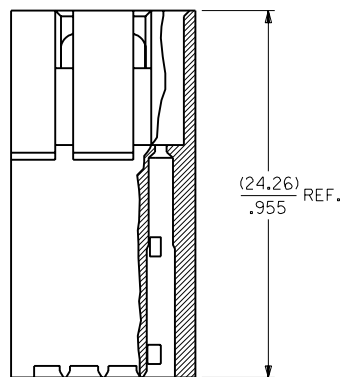
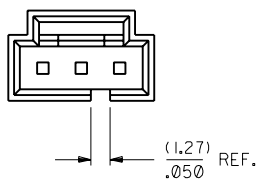
- 1) MATERIAL: GLASS FILLED POLYESTER, UL 94V-0
COLOR: BLACK
- 2) HOUSING TO BE USED WITH TERMINAL
PT. NO. 70021-****.
- 3) SEE CHART FOR CIRCUIT SIZES.
- 4) TO BE USED WITH 70400 SERIES
CONNECTORS (STYLE "G").
- 5) PACKAGE PER PK-70107-100.



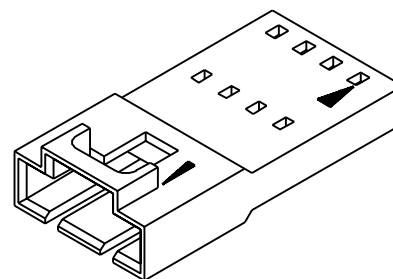
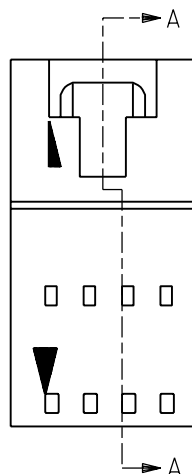
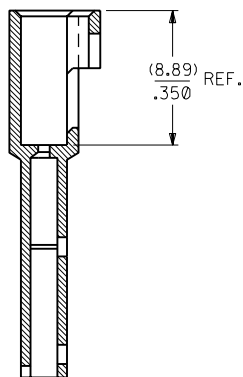
2 CIRCUIT



3 CIRCUIT



SECTION A-A



CKT. SIZE	EDP. NO.	ENG. NO.	A	B
2	701-07-0001	70107-0001	(7.11) .280	(2.54) .100
3	701-07-0002	70107-0002	(9.65) .380	(5.08) .200
4	701-07-0003	70107-0003	(12.19) .480	(7.62) .300
5	701-07-0004	70107-0004	(14.73) .580	(10.16) .400
6	701-07-0005	70107-0005	(17.27) .680	(12.70) .500
7	701-07-0006	70107-0006	(19.81) .780	(15.24) .600
8	701-07-0007	70107-0007	(22.35) .880	(17.78) .700
9	701-07-0008	70107-0008	(24.89) .980	(20.32) .800
10	701-07-0009	70107-0009	(27.43) 1.080	(22.86) .900
11	701-07-0010	70107-0010	(29.97) 1.180	(25.40) 1.000
12	701-07-0011	70107-0011	(32.51) 1.280	(27.94) 1.100
13	701-07-0012	70107-0012	(35.05) 1.380	(30.48) 1.200
14	701-07-0013	70107-0013	(37.59) 1.480	(33.02) 1.300
15	701-07-0014	70107-0014	(40.13) 1.580	(35.56) 1.400
16	701-07-0015	70107-0015	(42.67) 1.680	(38.10) 1.500
17	701-07-0016	70107-0016	(45.21) 1.780	(40.64) 1.600
18	701-07-0017	70107-0017	(47.75) 1.880	(43.18) 1.700
19	701-07-0018	70107-0018	(50.29) 1.980	(45.72) 1.800
20	701-07-0019	70107-0019	(52.83) 2.080	(48.26) 1.900
21	701-07-0020	70107-0020	(55.37) 2.180	(50.80) 2.000
22	701-07-0021	70107-0021	(57.91) 2.280	(53.34) 2.100
23	701-07-0022	70107-0022	(60.45) 2.380	(55.88) 2.200
24	701-07-0023	70107-0023	(62.99) 2.480	(58.42) 2.300
25	701-07-0024	70107-0024	(65.53) 2.580	(60.96) 2.400

I	FIXED REV BLOCK I TO CORRECT ECR * PER UDT2002-0499 KSTILES 01/09/25	H	ADD PKG NOTE PER UDT2000-0468 SCHAEFER 99/12/1
I	CHANGED MATERIAL AND SWITCHED A AND B DIMS PER UDT2002-0007 KSTILES 01/07/17	G	REVISION PER ECR #J81037 2/22/88 MJM
I		F	REDRAWN ON CAD ADD SHEET 2 PER ECR #9280 8/21/86 MJM
LTR.	REVISIONS	LTR.	REVISIONS

DIMENSIONS SHOWN (METRIC) INCH	
UNLESS OTHERWISE SPECIFIED TOLERANCES: ANGULAR ± 1/2°	
3 PLACE ± .010	INCH
2 PLACE ± .014	METRIC
1 PLACE ---	± 0.25
DRAFT WHERE APPLICABLE MUST REMAIN WITHIN DIMENSIONS	
DRWL. BY: RS	CHK'D. BY: MJM
APP'D. BY: WAZ	SCALE: 4 : 1

MFG. SH. REV.	
REVISE ONLY ON CAD SYSTEM	
TITLE: HOUSING, CONNECTOR (2.54)/.100 GRID VERSION "A" W/O LATCHES	
MOLEX INCORPORATED LISLE, ILL. 60532 U.S.A.	SHEET NO. 1 DATE 07/02/86
PART NO. SEE CHART	DRWG. NO. SD-70107-0001-0024
THIS DRAWING CONTAINS INFORMATION THAT IS PROPRIETARY TO MOLEX INC. AND SHOULD NOT BE USED WITHOUT WRITTEN PERMISSION.	
DA	SIZE 1/2