

产品编号 : 740990010

Product Description : SL Wire-to-Board Header, Surface Mount, Single Row, Vertical, 3.05mm Pocket, Shrouded, 10 Circuits, Tin (Sn) Plating

系列号 : 74099

状态 : Active

Product Category : PCB Headers and Receptacles

文件和资源

图纸

图纸 740990010_sd.pdf

包装设计图 PK-70873-003-001.pdf

3D 模型和设计文件

3D模型 740990010_stp.zip

规格


产品规格 PS-70400-001.pdf

产品规格 PS-70541-001.pdf

测试摘要 TS-70541-100-001.pdf

产物环境合规

合规

GADSL/IMDS	Compliant with Exemption 44; 33
China RoHS	
EU ELV	Not Relevant
Low-Halogen Status	Not Low-Halogen per IEC 61249-2-21
REACH SVHC	Not Contained per D(2023)8585-DC (23 Jan 2024)
EU RoHS	Compliant per EU 2015/863

多部分产品合规性声明

- Eu RoHS
- REACH SVHC
- Low-Halogen
- IPC 1752A Class C

- IPC 1752A Class D
- Molex Product Compliance Declaration
- IEC-62474
- chemSHERPA (xml)

欧盟 RoHS 合格证书

产品详情

常规

状态	活动
类别	PCB Headers and Receptacles
系列	74099
说明	SL Wire-to-Board Header, Surface Mount, Single Row, Vertical, 3.05mm Pocket, Shrouded, 10 Circuits, Tin (Sn) Plating
应用	Signal, Wire-to-Board
元件类型	PCB Header
产品系列	SL Modular Connectors
产品名称	SL
UPC	756054565698

机构

CSA	LR19980
UL	E29179

电气

每触点最大电流	3.0A
电压 - 最大	250V

物理

断开	否
回路数 (已载入)	10
电路数 (最多)	10
颜色-树脂	黑色
耐用性(插拔次数) - 最多次数	25
阻燃性	94V-0

符合灼热丝规范	否
材料 - 金属	Brass, Phosphor Bronze
材料 - 接合部位电镀	Tin
材料 - 终端电镀	Tin
材料 - 树脂	High Temperature Thermoplastic
净重	1.915/g
行数	1
方向	垂直
包装形式	Tube
推荐的 PCB 厚度	1.60mm
间距 - 插配接口	2.54mm
最薄镀层 - 接合部位	3.810µm
最薄镀层 - 端接	3.810µm
有极性的插配件	是
有护墙的	Fully
运行温度范围	-40° to +105° C
终端界面类型	Surface Mount

进程

最长持续时间	40
无铅	SMC&WAVE
最大周期	3
最高温度	245

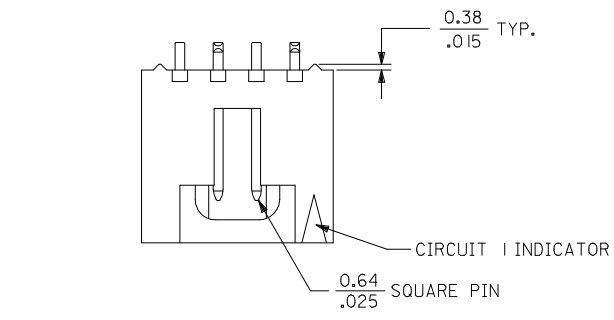
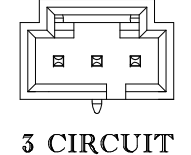
可配插/可连接使用的产品

可配插部件

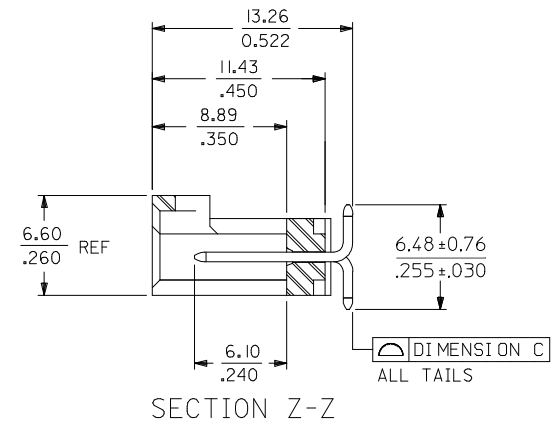
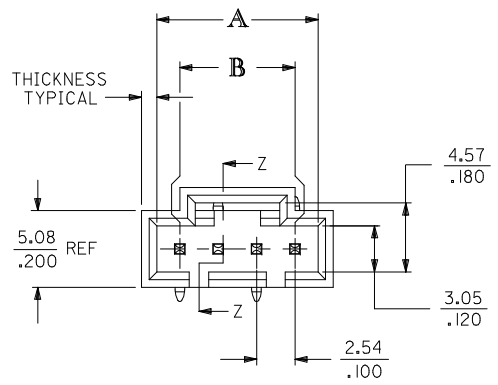
描述	产品编号
SL Single Row Crimp Housings and CPA Retainers	<u>70066</u>
SL Single Row Female Insulation Displacement Connector Assemblies	<u>70400</u>
SL Single Row Female Receptacles	<u>70430</u>

This document was generated on Jun 03, 2024

CKT. SIZE	DIMENSION A		DIMENSION B		DIMENSION C	
	MM	IN.	MM	IN.	MM	IN.
3	8.13	.320	5.08	.200	0.15	.006
4	10.67	.420	7.62	.300	0.15	.006
5	13.21	.520	10.16	.400	0.15	.006
6	15.75	.620	12.70	.500	0.15	.006
7	18.29	.720	15.24	.600	0.15	.006
8	20.83	.820	17.78	.700	0.15	.006
9	23.37	.920	20.32	.800	0.15	.006
10	25.91	1.020	22.86	.900	0.15	.006
11	28.45	1.120	25.40	1.000	0.15	.006
12	30.99	1.220	27.94	1.100	0.15	.006
13	33.53	1.320	30.48	1.200	0.15	.006
14	36.07	1.420	33.02	1.300	0.15	.006
15	38.61	1.520	35.56	1.400	0.15	.006
16	41.15	1.620	38.10	1.500	0.15	.006
17	43.69	1.720	40.64	1.600	0.15	.006
18	46.23	1.820	43.18	1.700	0.15	.006
19	48.77	1.920	45.72	1.800	0.15	.006
20	51.31	2.020	48.26	1.900	0.18	.007
21	53.85	2.120	50.80	2.000	0.18	.007
22	56.39	2.220	53.34	2.100	0.18	.007
23	58.93	2.320	55.88	2.200	0.18	.007
24	61.47	2.420	58.42	2.300	0.18	.007
25	64.01	2.520	60.96	2.400	0.18	.007



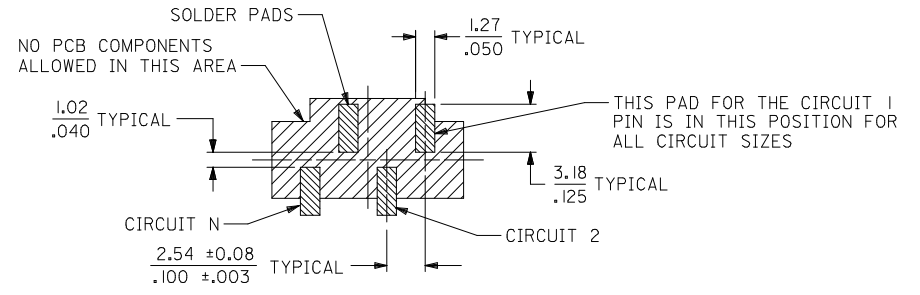
1.02
±.040 WALL THICKNESS TYPICAL



4 CIRCUIT SHOWN

NOTES:

- HEADER MATERIAL: GLASS FILLED POLYESTER; UL94V-0; COLOR: BLACK
PIN MATERIAL: PHOSPHOR BRONZE
- HEADER TO BE USED WITH OPTION "G" 70400 AND 70430 SERIES SL CONNECTORS.
- REFER TO MOLEX PRODUCT SPECIFICATION PS-70541.
- PRODUCT PACKAGED PER PK-70873-003.
- PLATINGS (SEE CHART ON SHEET 2):
 TIN - .000150 MINIMUM TIN PLATE OVER NICKEL PLATE.
 15 GOLD - .000015 MINIMUM GOLD PLATE IN SELECT AREA, .000075 MINIMUM TIN PLATE IN SELECT AREA, OVER NICKEL PLATE OVERALL.
 30 GOLD - .000030 MINIMUM GOLD PLATE IN SELECT AREA, .000075 MINIMUM TIN PLATE IN SELECT AREA, OVER NICKEL PLATE OVERALL.



RECOMMENDED PC BOARD LAYOUT

CORRECT DIM ERROR EC NO: UCP2014-1669 DRAWN: DMORGAN 2013/10/16 CHKD: MPOFF 2013/10/16 APPR: SMILLER 2013/10/18	QUALITY SYMBOLS	GENERAL TOLERANCES (UNLESS SPECIFIED)	DIMENSION STYLE	SCALE	DESIGN UNITS	THIRD ANGLE PROJECTION
	▽=0	mm INCH	MM/IN	4:1	INCH	
	▽=0	4 PLACES ± --- ± ---	DRAWN BY DATE	TITLE		
	▽=0	3 PLACES ± --- ± .010	BBARKER 03/06/18	SALES ASSY, SL VERTICAL HEADER, SMT W/ LATCH		
	2 PLACES ± 0.25 ± ---	CHECKED BY DATE	DOCUMENT NO.			
	1 PLACE ± --- ± ---	DMORGAN 03/06/18	SD-74099-001			
	0 PLACE ± --- ± ---	APPROVED BY DATE	SHEET NO.			
	ANGULAR ±1/2°	SMILLER 2013/07/26	1 OF 2			
	DRAFT WHERE APPLICABLE MUST REMAIN WITHIN DIMENSIONS	MATERIAL NO.	THIS DRAWING CONTAINS INFORMATION THAT IS PROPRIETARY TO MOLEX INCORPORATED AND SHOULD NOT BE USED WITHOUT WRITTEN PERMISSION			
		SEE TABLE				

	13	12	11	10	9	8	7	6	5	4	3	2	1
J	CIRCUIT SIZE	ASSEMBLY ITEM NUMBER 74099	PLATING SEE NOTE 5	MATING END PLATING TYPE	P.C. BOARD END PLATING TYPE								
	3-25	-0003-0025	TIN	TIN	TIN								
I	3-24	-1003-1024	15 GOLD	GOLD	TIN								
	3-24	-2003-2024	30 GOLD	GOLD	TIN								
H													

G	CIRCUIT SIZE	ASSEMBLY ITEM NUMBER	ASSEMBLY ITEM NUMBER	ASSEMBLY ITEM NUMBER	ASSEMBLY ITEM NUMBER	ASSEMBLY ITEM NUMBER	ASSEMBLY ITEM NUMBER
	3	74099-0003	74099-1003	74099-2003			
	4	74099-0004	74099-1004	74099-2004			
	5	74099-0005	74099-1005	74099-2005			
	6	74099-0006	74099-1006	74099-2006			
F	7	74099-0007	74099-1007	74099-2007			
	8	74099-0008	74099-1008	74099-2008			
	9	74099-0009	74099-1009	74099-2009			
	10	74099-0010	74099-1010	74099-2010			
	11	74099-0011	74099-1011	74099-2011			
	12	74099-0012	74099-1012	74099-2012			
E	13	74099-0013	74099-1013	74099-2013			
	14	74099-0014	74099-1014	74099-2014			
	15	74099-0015	74099-1015	74099-2015			
	16	74099-0016	74099-1016	74099-2016			
	17	74099-0017	74099-1017	74099-2017			
	18	74099-0018	74099-1018	74099-2018			
	19	74099-0019	74099-1019	74099-2019			
D	20	74099-0020	74099-1020	74099-2020			
	21	74099-0021	74099-1021	74099-2021			
	22	74099-0022	74099-1022	74099-2022			
	23	74099-0023	74099-1023	74099-2023			
	24	74099-0024	74099-1024	74099-2024			
	25	74099-0025					

C													C
B													B
A													A

SEE SHEET 1 EC NO: UCP2014-1669 DRW:DMORGAN 2013/10/16 CHK:DMPOFF 2013/10/16 APPR:SMILLER 2013/10/18	QUALITY SYMBOLS ▽=0 ▽=0 ▽=0	GENERAL TOLERANCES (UNLESS SPECIFIED)		DIMENSION STYLE MM/IN		SCALE 1:1	DESIGN UNITS INCH	THIRD ANGLE PROJECTION	
		4 PLACES ± ---	± ---	DRAWN BY BBARKER	DATE 03/06/18	TITLE SALES ASSY, SL VERTICAL HEADER, SMT W/ LATCH			
		3 PLACES ± ---	± .010	CHECKED BY DMORGAN	DATE 03/06/18				
		2 PLACES ± 0.25	± ---	APPROVED BY SMILLER		DATE 2013/07/26	molex DOCUMENT NO. SD-74099-001		
1 PLACE ± ---	± ---								
0 PLACE ± ---	± ---	ANGULAR ±1/2°		MATERIAL NO.		DOCUMENT NO.		SHEET NO.	
DRAFT WHERE APPLICABLE MUST REMAIN WITHIN DIMENSIONS				SEE TABLE		SD-74099-001		2 OF 2	
THIS DRAWING CONTAINS INFORMATION THAT IS PROPRIETARY TO MOLEX INCORPORATED AND SHOULD NOT BE USED WITHOUT WRITTEN PERMISSION									