



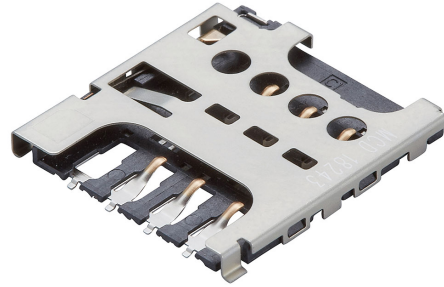
产品编号 : [787270001](#)

Product Description : 1.40mm Height Push-Pull micro-SIM Card Socket with Detect Switch, Surface Mount, 6 Circuits, Low-Halogen, Lead-Free

系列号 : 78727

状态 : Active

Product Category : Memory / SIM Card Connectors



---

## 文件和资源

### 图纸

[图纸 787270001\\_sd.pdf](#)

[包装设计图 PK-78727-001-001.pdf](#)

### 3D 模型和设计文件

[3D模型 787270001\\_stp.zip](#)


### 规格

[产品规格 PS-78727-001-001.pdf](#)

---

## 产物环境合规

### 合规

GADSL/IMDS	Compliant with Exemption 44; 34; 33
China RoHS	
EU ELV	Not Relevant
Low-Halogen Status	Low-Halogen per IEC 61249-2-21
REACH SVHC	Not Contained per D(2023)3788-DC (14 Jun 2023)
EU RoHS	Compliant per EU 2015/863

### 多部分产品合规性声明

- Eu RoHS
- REACH SVHC
- Low-Halogen

### 多部分行业合规性文件

F

E

D

C

B

A

F

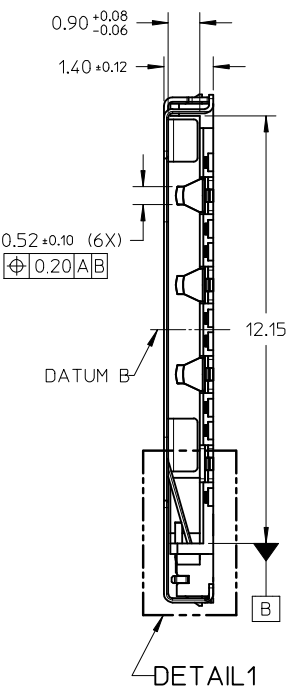
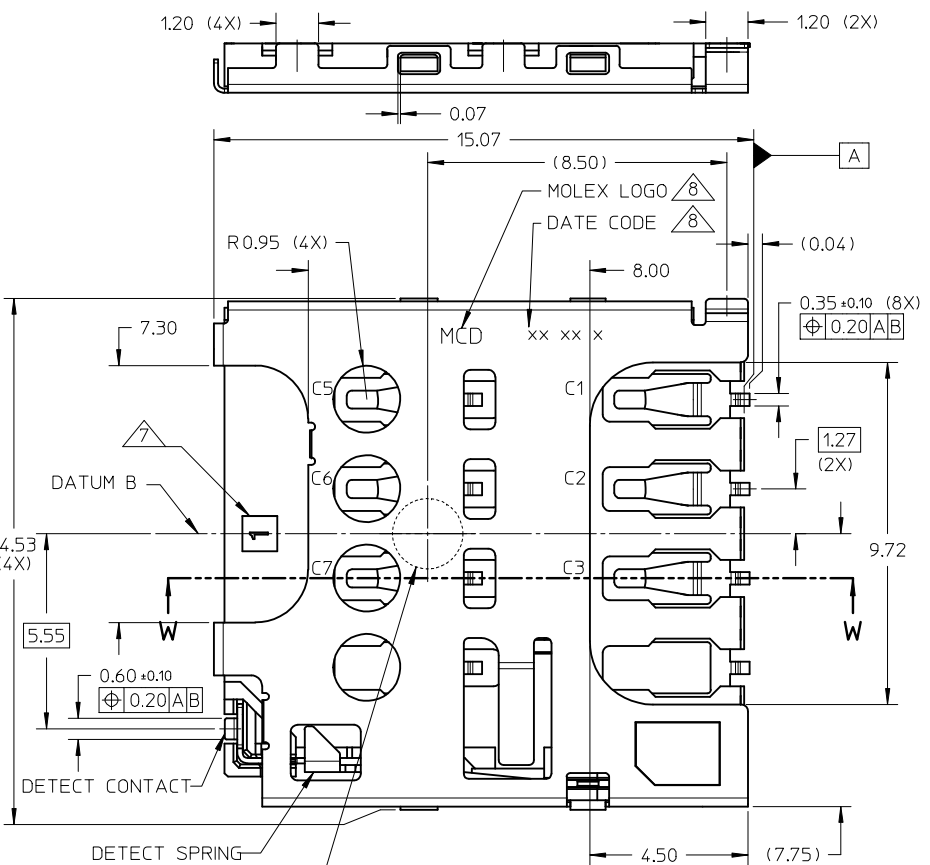
E

D

C

B

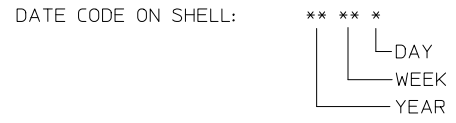
A



NOTES:

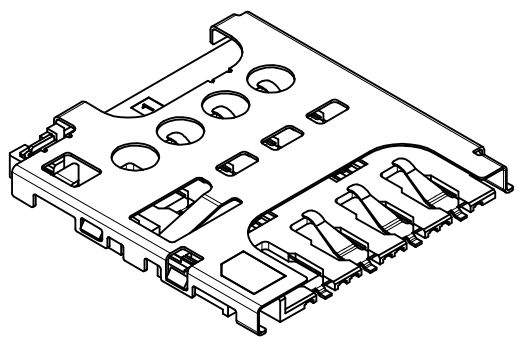
1. MATERIALS:
  - HOUSING: LIQUID CRYSTAL POLYMER(LCP) 40% GLASS FILLED, UL94-V0
  - COLOUR: BLACK
  - TERMINAL: COPPER ALLOY
  - DETECT CONTACT: COPPER ALLOY
  - DETECT PIN: COPPER ALLOY
  - METAL SHELL: STAINLESS STEEL
2. PLATING FINISHES:
  - TERMINAL:-
    - CONTACT: 0.38µM MIN GOLD OVER 1.27µM MIN NICKEL UNDERPLATE
    - SOLDERTAIL: 1.27µM MIN MATTE TIN OVER 1.27µM MIN NICKEL UNDERPLATE
  - SHELL:-
    - SOLDERTAB: 1.27µM MIN MATTE TIN OVER 1.27µM MIN NICKEL UNDERPLATE
    - DETECT CONTACT:-
      - CONTACT: 0.127µM MIN GOLD OVER 1.27µM MIN NICKEL UNDERPLATE
      - SOLDERTAIL: 1.27µM MIN MATTE TIN OVER 1.27µM MIN NICKEL UNDERPLATE
    - DETECT SPRING:-
      - CONTACT: 0.127µM MIN GOLD OVER 1.27µM MIN NICKEL UNDERPLATE
      - SOLDERTAIL: 1.27µM MIN MATTE TIN OVER 1.27µM MIN NICKEL UNDERPLATE
3. OVERALL COPLANARITY(SOLDERTAIL AND SOLDERTAB): 0.08MM MAX
4. PRODUCT SPECIFICATION: PS-78727-001
5. PACKAGING SPECIFICATION: PK-78727-001
6. COMPLIANT TO RoHS DIRECTIVE 2002/95/EC AND ELV DIRECTIVE 2000/53/EC.

- △ CAVITY NUMBER LOCATION
- ⑧ MANUFACTURER ID AND DATE CODE TO BE PRINTED



CARD INSERTION STATE	DETECT SWITCH CIRCUIT STATE	SCHEMATIC
CARD MATED	OPENED	
CARD UNMATED	CLOSED	

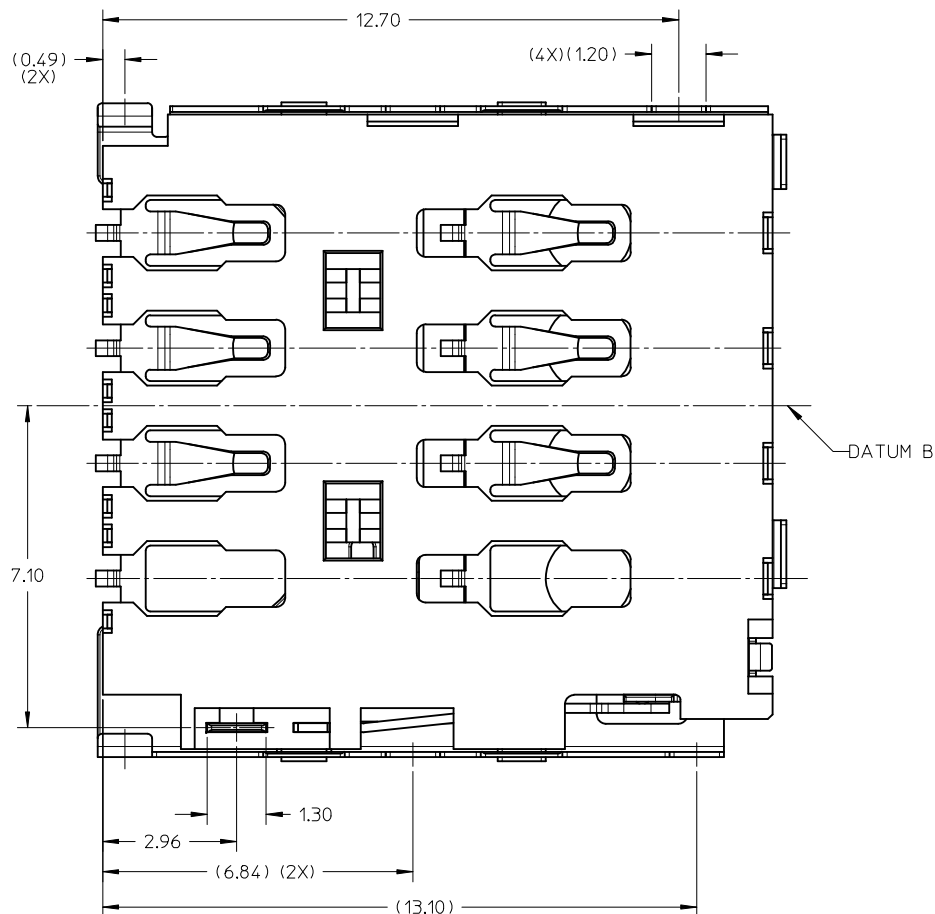
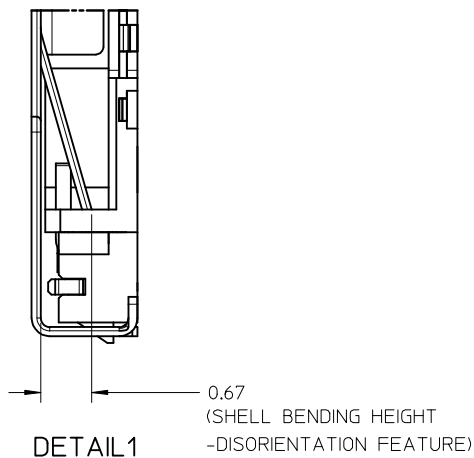
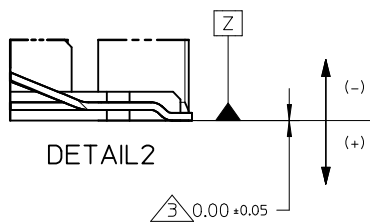
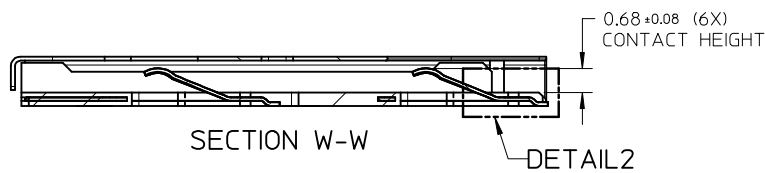
D.C. DETECT CONTACT  
D.S. DETECT SPRING



RECOMMENDED PICK & PLACE POSITION NOZZLE(φ2.00)

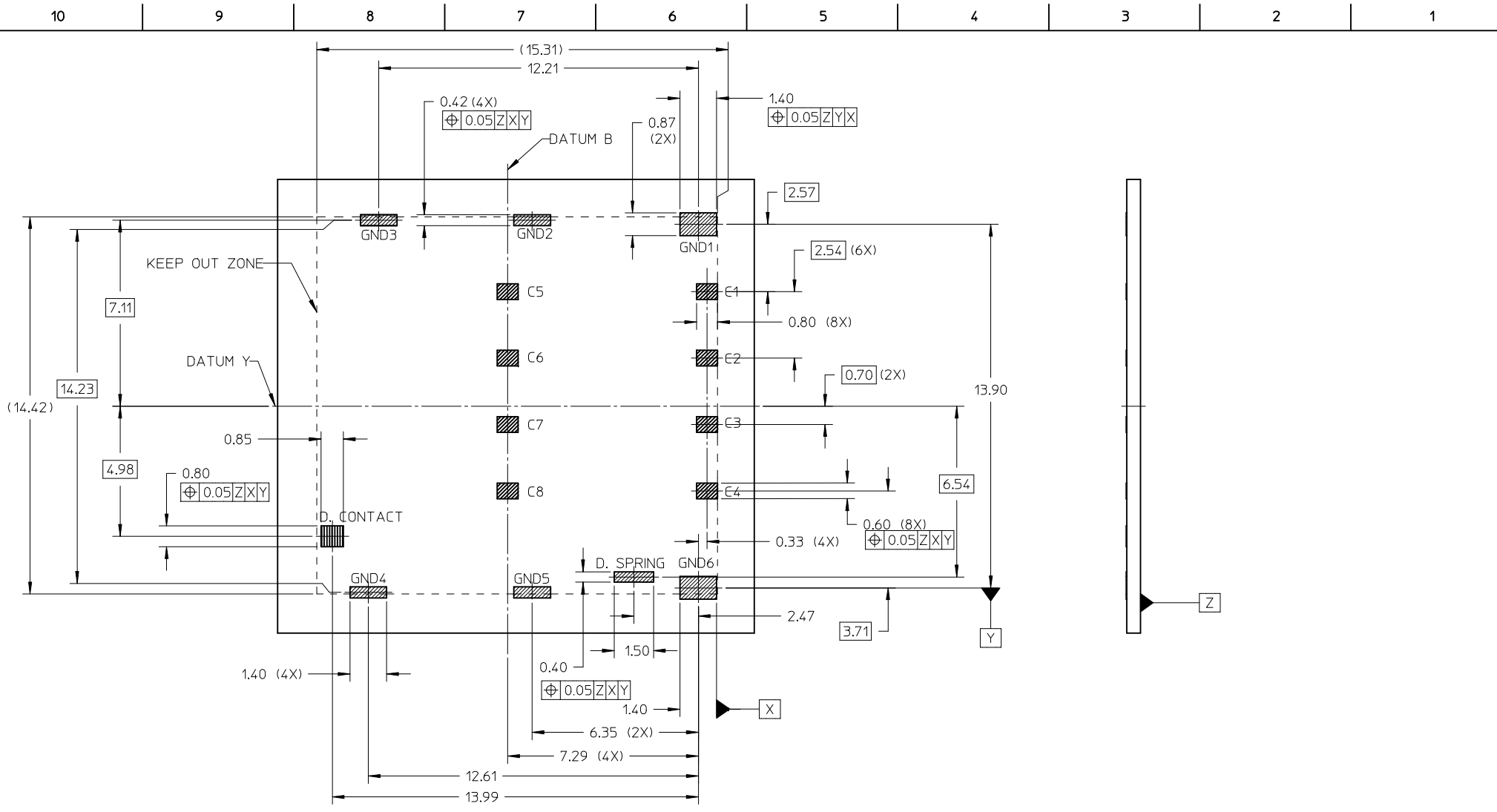
ADD D.S. TABLE EC NO: S2013-0205 DRW: EANG CHKD: JTAN02 APPR: KHL IM	2012/10/09 2012/11/01 2012/11/01	QUALITY SYMBOLS F <sub>A</sub> =0 F <sub>E</sub> =0 F <sub>P</sub> =0	GENERAL TOLERANCES (UNLESS SPECIFIED)		DIMENSION STYLE MM ONLY		SCALE NTS	DESIGN UNITS METRIC	THIRD ANGLE PROJECTION		
			4 PLACES	± ---	± ---	DRAWN BY EANG	DATE 2012/01/04	TITLE <b>MICRO SIM CONNECTOR 1.40MM HEIGHT, PUSH PULL WITH DETECT PIN</b>			
			3 PLACES	± ---	± ---	CHECKED BY JTAN02	DATE 2012/01/06				
			2 PLACES	± 0.20	± ---	APPROVED BY KHL IM	DATE 2012/01/13	MOLEX INCORPORATED			
ANGULAR ± 1 °		DRAFT WHERE APPLICABLE MUST REMAIN WITHIN DIMENSIONS		MATERIAL NO. <b>78727-0001</b>		DOCUMENT NO. <b>SD-78727-001</b>		SHEET NO. 1 OF 4			

10 9 8 7 6 5 4 3 2 1



<b>ADD D.S. TABLE</b> EC NO: S2013-0205 DRW: EANG 2012/10/09 CHKD: JIAN02 2012/11/01 APPR: KHL IM 2012/11/01	DESCRIPTION REV	QUALITY SYMBOLS	GENERAL TOLERANCES (UNLESS SPECIFIED)		DIMENSION STYLE	SCALE	DESIGN UNITS	THIRD ANGLE PROJECTION			
		$\nabla_A = 0$ $\nabla_C = 0$ $\nabla_P = 0$	mm	INCH	MM ONLY	NTS	METRIC				
		4 PLACES ± --- ± --- 3 PLACES ± --- ± --- 2 PLACES ± 0.20 ± --- 1 PLACE ± --- ± ---	ANGULAR ± 1 °		DRAWN BY EANG CHECKED BY EANG02 APPROVED BY KHL IM	DATE 2012/01/04 DATE 2012/01/06 DATE 2012/01/13	TITLE				
		DRAFT WHERE APPLICABLE MUST REMAIN WITHIN DIMENSIONS		MATERIAL NO. 78727-0001		MOLEX INCORPORATED			DOCUMENT NO. SD-78727-001		
SIZE A3		THIS DRAWING CONTAINS INFORMATION THAT IS PROPRIETARY TO MOLEX INCORPORATED AND SHOULD NOT BE USED WITHOUT WRITTEN PERMISSION									

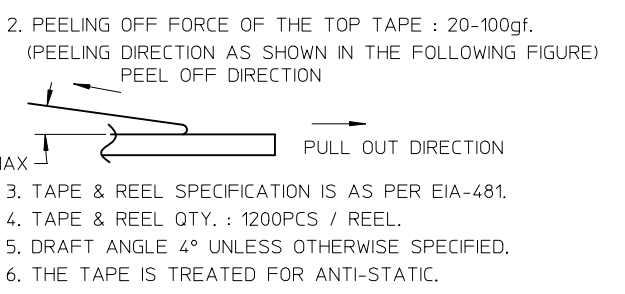
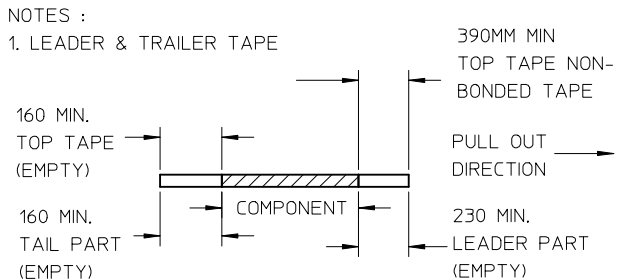
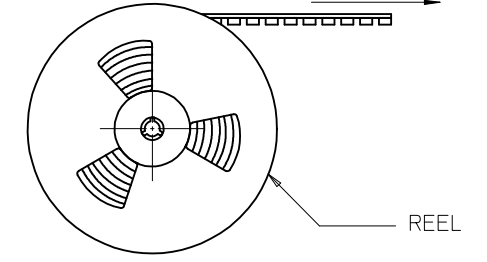
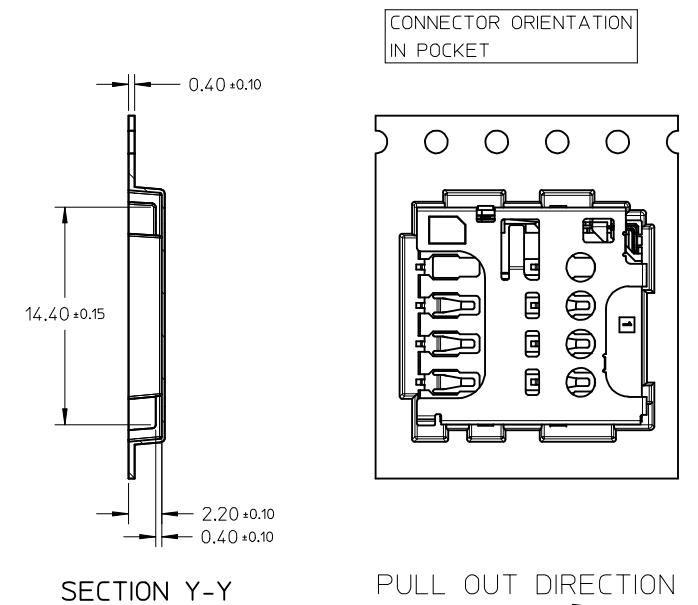
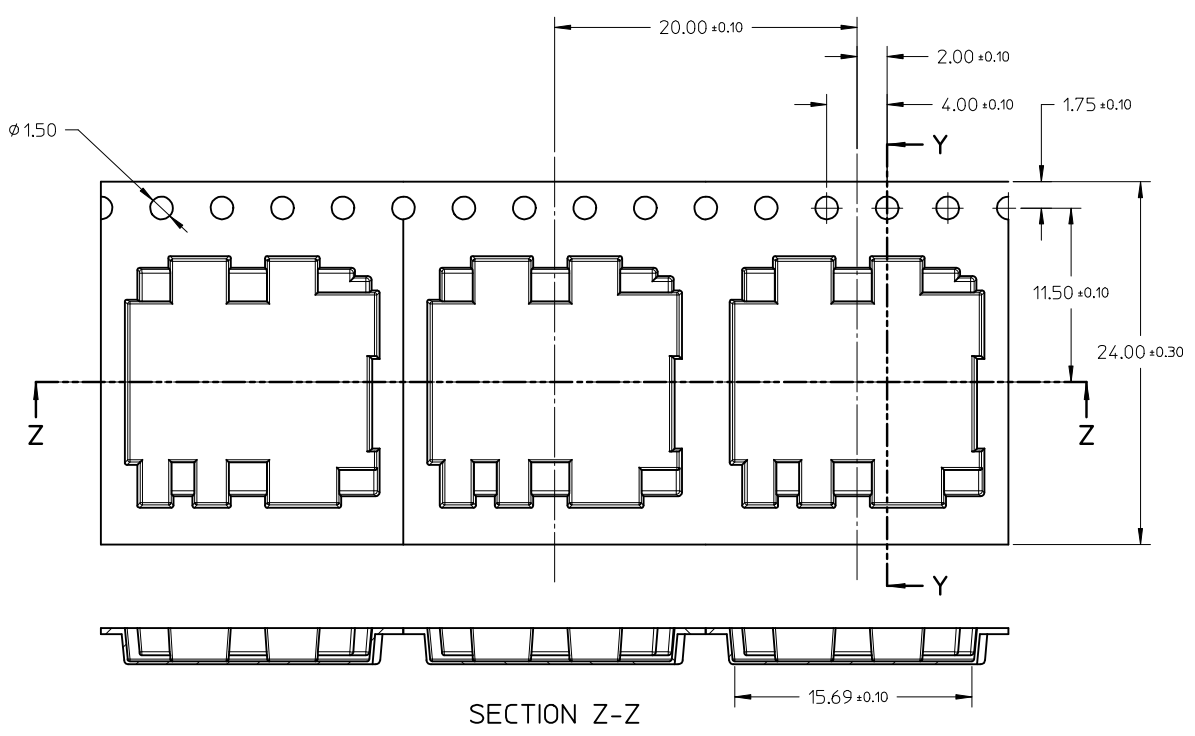
9 8 7 6 5 4 3 2 1



RECOMMENDED PCB LAYOUT  
 (NON-SOLDER MASK DEFINE PWB)  
 PWB TOLERANCE: ±0.05MM

<b>ADD D.S. TABLE</b> EC NO: S2013-0205 DRW: EANG CHKD: JTAN02 APPR: KHLIM 2012/10/09 2012/11/01 2012/11/01	<b>QUALITY SYMBOLS</b> $F_A=0$ $F_G=0$ $F_P=0$	<b>GENERAL TOLERANCES (UNLESS SPECIFIED)</b>		<b>DIMENSION STYLE</b> MM ONLY	<b>SCALE</b> NTS	<b>DESIGN UNITS</b> METRIC	THIRD ANGLE PROJECTION		
		4 PLACES ± --- ± --- 3 PLACES ± --- ± --- 2 PLACES ± 0.20 ± --- 1 PLACE ± --- ± ---	mm    INCH	DRAWN BY: EANG DATE: 2012/01/04	<b>TITLE</b> MICRO SIM CONNECTOR 1.40MM HEIGHT, PUSH PULL WITH DETECT PIN				
		ANGULAR ± 1°		CHECKED BY: JTAN02 DATE: 2012/01/06	<b>MOLEX INCORPORATED</b>				
		<b>DRAFT WHERE APPLICABLE MUST REMAIN WITHIN DIMENSIONS</b>		APPROVED BY: KHLIM DATE: 2012/01/13	MATERIAL NO. <b>78727-0001</b>	DOCUMENT NO. <b>SD-78727-001</b>	SHEET NO. <b>3 OF 4</b>		
<b>A1</b>		<b>SIZE</b> A3		THIS DRAWING CONTAINS INFORMATION THAT IS PROPRIETARY TO MOLEX INCORPORATED AND SHOULD NOT BE USED WITHOUT WRITTEN PERMISSION					

10 9 8 7 6 5 4 3 2 1



LEADER LENGTH	SEAL TYPE	REEL MATL	REEL COLOUR
390MM	COLD SEAL	PAPER	WHITE

ADD D.S. TABLE EC NO: S2013-0205 DRAWN: EANG CHKD: JTAN02 APPR: KHL IM	DESCRIPTION 2012/10/09 2012/11/01 2012/11/01	QUALITY SYMBOLS F <sub>A</sub> =0 F <sub>G</sub> =0 F <sub>P</sub> =0	GENERAL TOLERANCES (UNLESS SPECIFIED)		DIMENSION STYLE		SCALE	DESIGN UNITS	THIRD ANGLE PROJECTION		
			mm	INCH	MM ONLY	NTS	METRIC	⊙	∟		
A1	REV		4 PLACES	± ---	± ---	DRAWN BY	DATE	TITLE			
			3 PLACES	± ---	± ---	EANG	2012/01/04	MICRO SIM CONNECTOR			
			2 PLACES	± 0.20	± ---	CHECKED BY	DATE	1.40MM HEIGHT, PUSH PULL			
			1 PLACE	± ---	± ---	JTAN02	2012/01/06	WITH DETECT PIN			
			ANGULAR ± 1 °		APPROVED BY	DATE	MOLEX		MOLEX INCORPORATED		
DRAFT WHERE APPLICABLE MUST REMAIN WITHIN DIMENSIONS		MATERIAL NO.	78727-0001		DOCUMENT NO.	SD-78727-001		SHEET NO. 4 OF 4			
		SIZE	THIS DRAWING CONTAINS INFORMATION THAT IS PROPRIETARY TO MOLEX INCORPORATED AND SHOULD NOT BE USED WITHOUT WRITTEN PERMISSION								
		A3									

9 8 7 6 5 4 3 2 1

- IPC 1752A Class C
- IPC 1752A Class D
- Molex Product Compliance Declaration
- IEC-62474
- chemSHERPA (xml)

欧盟 RoHS 合格证书

## 产品详情

### 常规

状态	活动
类别	Memory / SIM Card Connectors
系列	78727
说明	1.40mm Height Push-Pull micro-SIM Card Socket with Detect Switch, Surface Mount, 6 Circuits, Low-Halogen, Lead-Free
产品系列	SD and SIM Memory Card Sockets
产品名称	micro-SIM
类型	Push-Pull
UPC	884982781894

### 电气

每触点最大电流	0.5A
屏蔽	是
电压 - 最大	10V DC

### 物理

卡片探测开关	已关闭
插卡位置	Front
回路数 (已载入)	6
电路数 (最多)	6
耐用性 (插拔次数) - 最多次数	500
弹出器按钮端	不适用
材料 - 触头	Copper Alloy
材料 - 接合部位电镀	金牌
材料 - 外壳	Stainless Steel

净重	333.639/mg
包装形式	Embossed Tape on Reel
PCB 定位器	否
PCB 保持力	是
间距 - 插配接口	2.54mm
运行温度范围	-40° to +85° C
终端界面类型	Surface Mount

## 进程

最长持续时间	3
无铅	REFLOW
最大周期	3
最高温度	260