



产品编号 : 901192110

系列号 : 90119

Product Category : Crimp Terminals

Product Description : C-Grid III Female Crimp Terminal, 22-24 AWG, Bag, 0.38µm Selective Gold (Au)

状态 : Active

Packaging Alternative : 901190110 (Reel)

文件和资源

图纸

图纸 901192110_sd.pdf

包装设计图 PK-90119-101-001.pdf

3D 模型和设计文件

3D模型 901192110_stp.zip


规格

应用规格 901190001-AS-000.pdf

产品规格 PS-99020-0001-001.pdf

产物环境合规

合规

GADSL/IMDS	Compliant with Exemption 44; 34; 33
China RoHS	
EU ELV	Not Relevant
Low-Halogen Status	Low-Halogen per IEC 61249-2-21
REACH SVHC	Not Contained per D(2023)8585-DC (23 Jan 2024)
EU RoHS	Compliant per EU 2015/863

多部分产品合规性声明

- Eu RoHS
- REACH SVHC
- Low-Halogen

- IPC 1752A Class C
- IPC 1752A Class D
- Molex Product Compliance Declaration

- IEC-62474

- chemSHERPA (xml)

欧盟 RoHS 合格证书

产品详情

常规

状态	活动
类别	Crimp Terminals
系列	90119
说明	C-Grid III Female Crimp Terminal, 22-24 AWG, Bag, 0.38 μ m Selective Gold (Au)
应用	Signal, Wire-to-Board
评论	Loose Piece
产品系列	C-Grid III Interconnects
产品名称	C-Grid III
UPC	800753721579

物理

性别	女
材料 - 金属	Phosphor Bronze
材料 - 接合部位电镀	金牌
材料 - 终端电镀	Tin
净重	0.073/g
包装形式	Bag
最薄镀层 - 接合部位	0.381 μ m
最薄镀层 - 端接	3.048 μ m
终端界面类型	Crimp or Compression
导线绝缘直径	1.02-1.47mm
线径规格 (AWG)	22, 24
线缆尺寸mm ²	不适用

进程

无铅	不适用
----	-----

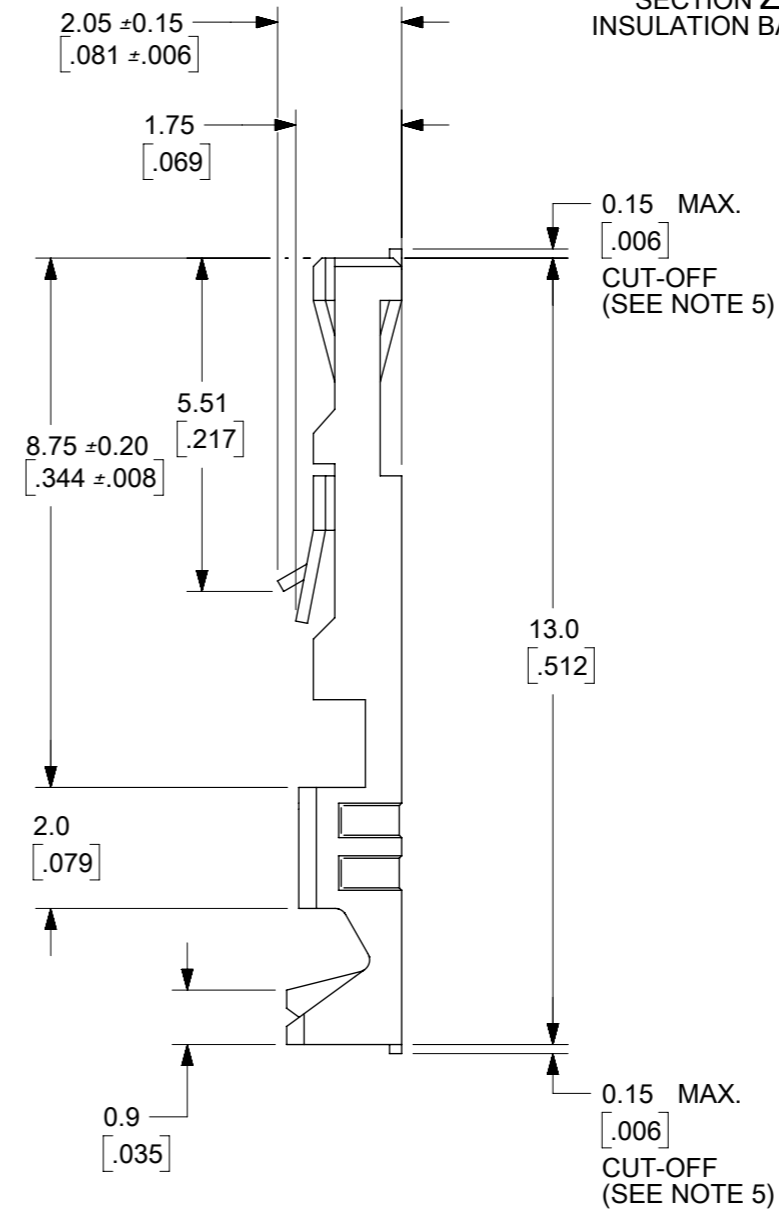
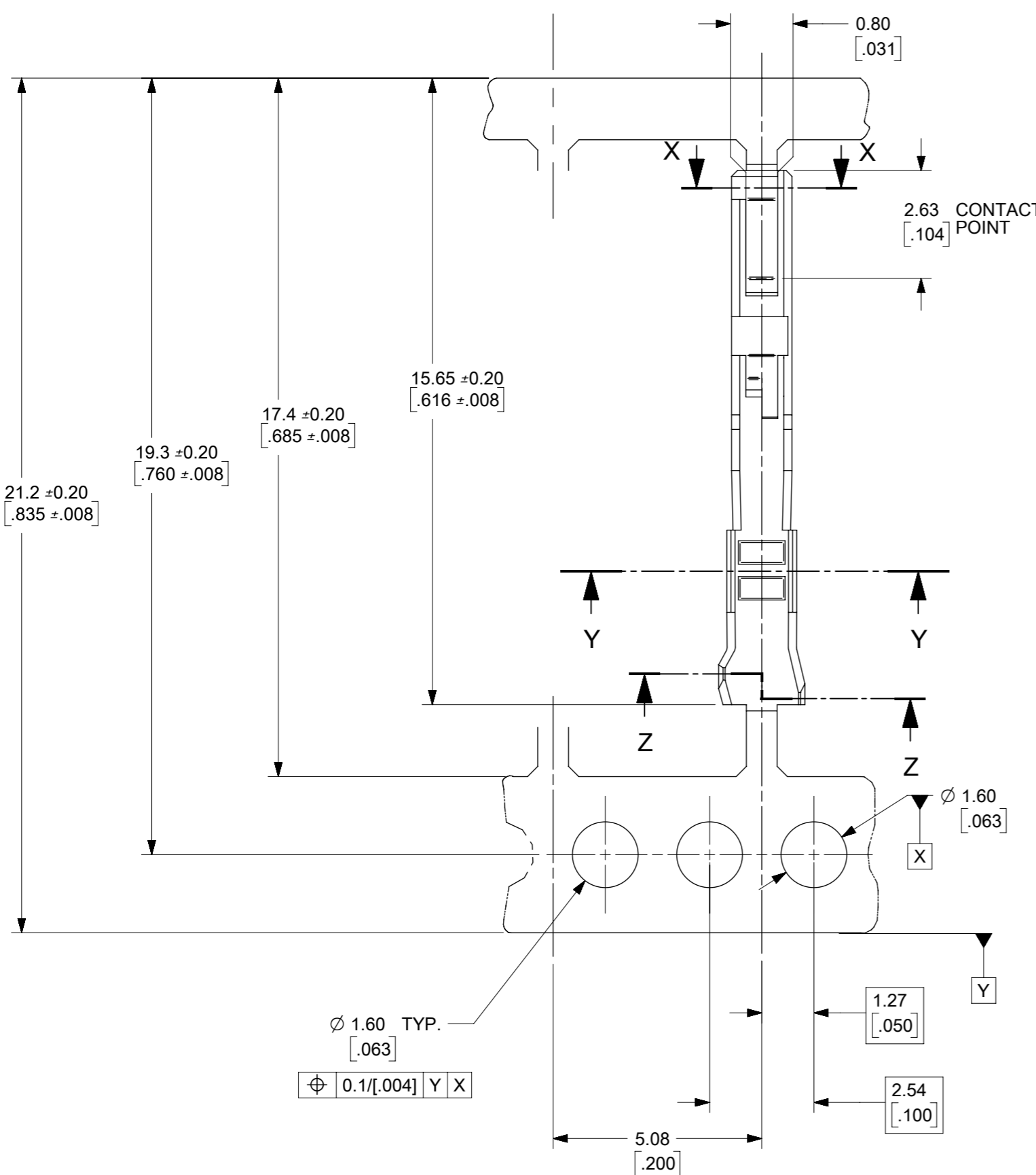
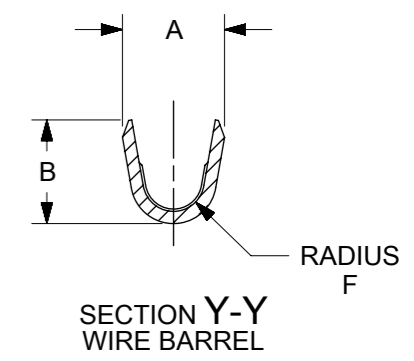
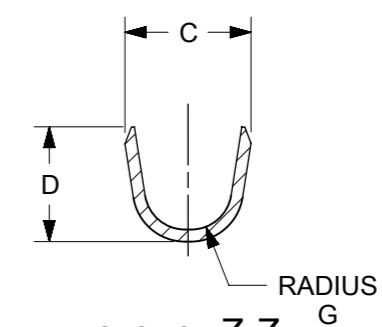
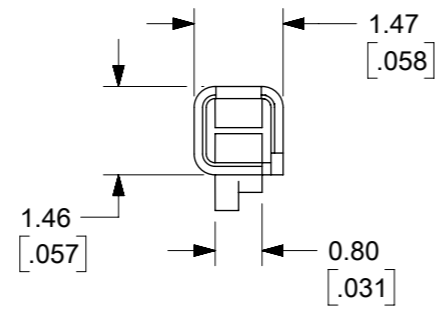
可连接使用部件

描述	产品编号
C-Grid III Modular Single Row Crimp Housings	<u>90123</u>
C-Grid III Dual Row Crimp Housings	<u>90142</u>
C-Grid III Modular Dual Row Crimp Housings	<u>90143</u>
C-Grid III Single Row Crimp Housings	<u>90156</u>
C-Grid III Dual Row Crimp Housings	<u>90160</u>

施工工具

全局

描述	产品编号
Hand Crimp Tool For C-Grid III Female Crimp Terminals, 22-24AWG	<u>638258100</u>
Extraction Tool for C-Grid III Terminals	<u>690080003</u>
Insertion Tool for C-Grid III Pre-crimped Terminals	<u>690080140</u>

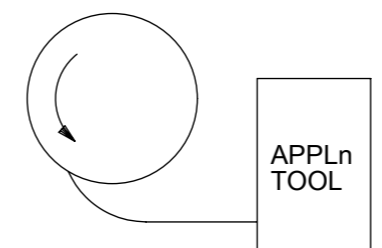


- NOTES:**
1. MATERIAL -
PHOSPHOR BRONZE CDA 521
THICKNESS : 0.200/[.008]
TENSILE STRENGTH = 655 ~ 760 N/mm²
PLATING - SEE SHEET 2
 2. FOR DIMENSION A,B,C,D,F & G
SEE SHEET 2
 3. FOR WIRE SIZE & INSULATION DIA
SEE SHEET 2
 4. THIS TERMINAL TO MATE WITH
0.635 / [.025] SQUARE PIN
 5. MAX BURR AFTER CUT-OFF
0.025 / [.001]

THIS DRAWING CONTAINS INFORMATION THAT IS PROPRIETARY TO MOLEX ELECTRONIC TECHNOLOGIES, LLC AND SHOULD NOT BE USED WITHOUT WRITTEN PERMISSION		CURRENT REV DESC: DATUM ADD FOR TP		molex	
DIMENSION UNITS mm/[in]	SCALE NTS	EC NO: 607190			
GENERAL TOLERANCES (UNLESS SPECIFIED)		DRWN: RMV02 2018/11/02		C-GRID III FEMALE CRIMP TERMINAL	
4 PLACES ±		CHK'D: GJEEVANSURES 2019/04/01		PRODUCT CUSTOMER DRAWING	
3 PLACES ±	± 0.004	APPR: ISHWARG 2019/04/02		DOCUMENT NUMBER	
2 PLACES ±	± 0.1	INITIAL REVISION:		SD-90119	
1 PLACE ±	± 0.2	DRWN: NPC 1987/08/27		DOC TYPE	
0 PLACES ±	±	APPR: MLOMG 2011/07/04		PSD	
ANGULAR TOL ± 0.5°		SERIES		DOC PART	
DRAFT WHERE APPLICABLE MUST REMAIN WITHIN DIMENSIONS		A3-SIZE		001	
THIRD ANGLE PROJECTION		90119		REVISION	
DRAWING		MATERIAL NUMBER		M	
SERIES		CUSTOMER		SHEET NUMBER	
90119		GENERAL MARKET		1 OF 2	

					CRIMP DIMENSION					
					WIRE BARREL			INSULATION BARREL		
PART No	PLATING	REELING	WIRE SIZE (AWG)	INSULATION RANGE	A ±0.15 ±[.006]	B ±0.15 ±[.006]	F ±0.15 ±[.006]	C ±0.15 ±[.006]	D ±0.15 ±[.006]	G ±0.15 ±[.006]
90119-0109	A	L.H FEED	22,24	1.02 ~ 1.47 [.040 ~ .058]	1.70 [.067]	1.70 [.067]	0.51 [.020]	2.10 [.083]	1.90 [.075]	0.70 [.028]
90119-0110	E									
90119-0111	F									
90119-0112	D									
90119-0120	A									
90119-0121	E									
90119-0122	F	LOOSE PIECE PARTS	26,28	0.76 ~ 1.22 [.030 ~ .048]	1.37 [.054]	1.37 [.054]	0.28 [.011]	2.00 [.079]	1.70 [.067]	0.60 [.024]
90119-0123	D									
90119-2109	A									
90119-2110	E									
90119-2111	F									
90119-2112	D									
90119-2120	A	LOOSE PIECE PARTS	26,28	0.76 ~ 1.22 [.030 ~ .048]	1.37 [.054]	1.37 [.054]	0.28 [.011]	2.00 [.079]	1.70 [.067]	0.60 [.024]
90119-2121	E									
90119-2122	F									
90119-2123	D									

TYPE	PLATING
A	PRE-PLATED HOT DIP TIN 1.0 TO 2.5 μm / [.00004 TO .0001 μin]
E	1.27 TO 1.78 μm / [.00005 TO .00007 μin] NICKEL OVERALL. 0.38 TO 0.64 μm / [.000015 TO .000025 μin] GOLD ON CONTACT AREA. 3.0 TO 5.0 μm / [.00012 to .0002 μin] TIN ON TERMINATION AREA.
F	1.27 TO 1.78 μm / [.00005 TO .00007 μin] NICKEL OVERALL. 0.38 TO 0.64 μm [.000015 TO .000025 μin] GOLD ON CONTACT AREA. 3.0 TO 5.0 μm / [.00012 TO .0002 μin] TIN ON TERMINATION AREA.
D	1.25 μm MIN NICKEL OVERALL. 0.05 μm ~ 0.10 μm GOLD FLASH ON CONTACT AREA 2.50 μm MIN TIN ON CRIMP AREA



L.H FEED

THIS DRAWING CONTAINS INFORMATION THAT IS PROPRIETARY TO MOLEX ELECTRONIC TECHNOLOGIES, LLC AND SHOULD NOT BE USED WITHOUT WRITTEN PERMISSION											
DIMENSION UNITS		SCALE		CURRENT REV DESC: DATUM ADD FOR TP						molex	
mm/[in]		NTS									
GENERAL TOLERANCES (UNLESS SPECIFIED)											
		MM		INCH		EC NO: 607190					
4 PLACES		±		±		DRWN: RMV02 2018/11/02					
3 PLACES		±		± 0.004		CHK'D: GJEEVANSURES 2019/04/01					
2 PLACES		± 0.1		±		APPR: ISHWARG 2019/04/02					
1 PLACE		± 0.2		±		INITIAL REVISION:					
0 PLACES		±		±		DRWN: NPC 1987/08/27					
ANGULAR TOL		± 0.5°		±		APPR: MLOMG 2011/07/04					
DRAFT WHERE APPLICABLE MUST REMAIN WITHIN DIMENSIONS				THIRD ANGLE PROJECTION		DRAWING		SERIES		MATERIAL NUMBER	
						A3-SIZE		90119		SEE TABLE	
CUSTOMER				GENERAL MARKET		SHEET NUMBER		2 OF 2		DOCUMENT NUMBER	
								SD-90119		PSD 001 M	

DOCUMENT STATUS	P1	RELEASE DATE	2019/04/02	04:31:41
-----------------	----	--------------	------------	----------