



产品编号 : 901420016

Product Description : 2.54mm Pitch C-Grid  
III Crimp Housing Dual Row, 16 Circuits,  
Black

系列号 : 90142

状态 : Active

Product Category : Connector Housings

---

## 文件和资源

### 图纸

图纸 901420016\_sd.pdf

### 3D 模型和设计文件

3D模型 901420016\_stp.zip


### 规格

产品规格 PS-99020-0001-001.pdf

---

## 产物环境合规

### 合规

GADSL/IMDS	Not Relevant
China RoHS	
EU ELV	Not Relevant
Low-Halogen Status	Low-Halogen per IEC 61249-2-21
REACH SVHC	Not Contained per D(2023)8585-DC (23 Jan 2024)
EU RoHS	Compliant per EU 2015/863

### 多部分产品合规性声明

- Eu RoHS
- REACH SVHC
- Low-Halogen
  
- IPC 1752A Class C
- IPC 1752A Class D
- Molex Product Compliance Declaration
- IEC-62474
- chemSHERPA (xml)

### 欧盟 RoHS 合格证书

## 产品详情

### 常规

状态	活动
类别	Connector Housings
系列	90142
说明	2.54mm Pitch C-Grid III Crimp Housing Dual Row, 16 Circuits, Black
应用	Signal, Wire-to-Board
产品系列	C-Grid III Interconnects
产品名称	C-Grid III
UPC	800753658172

### 机构

CSA	LR19980
UL	E29179

### 物理

断开	否
电路数（最多）	16
颜色-树脂	黑色
性别	Receptacle
符合灼热丝规范	否
插接极性	无
锁定插接部位	是
材料 - 树脂	PPO
净重	1.120/g
行数	2
包装形式	Bag
面板安装式	否
间距 - 插配接口	2.54mm
间距 - 终端界面	2.54mm
有极性的插配件	是
端口	0
可堆叠的	否

运行温度范围	-55° to +105° C
--------	-----------------

## 进程

无铅	不适用
----	-----

---

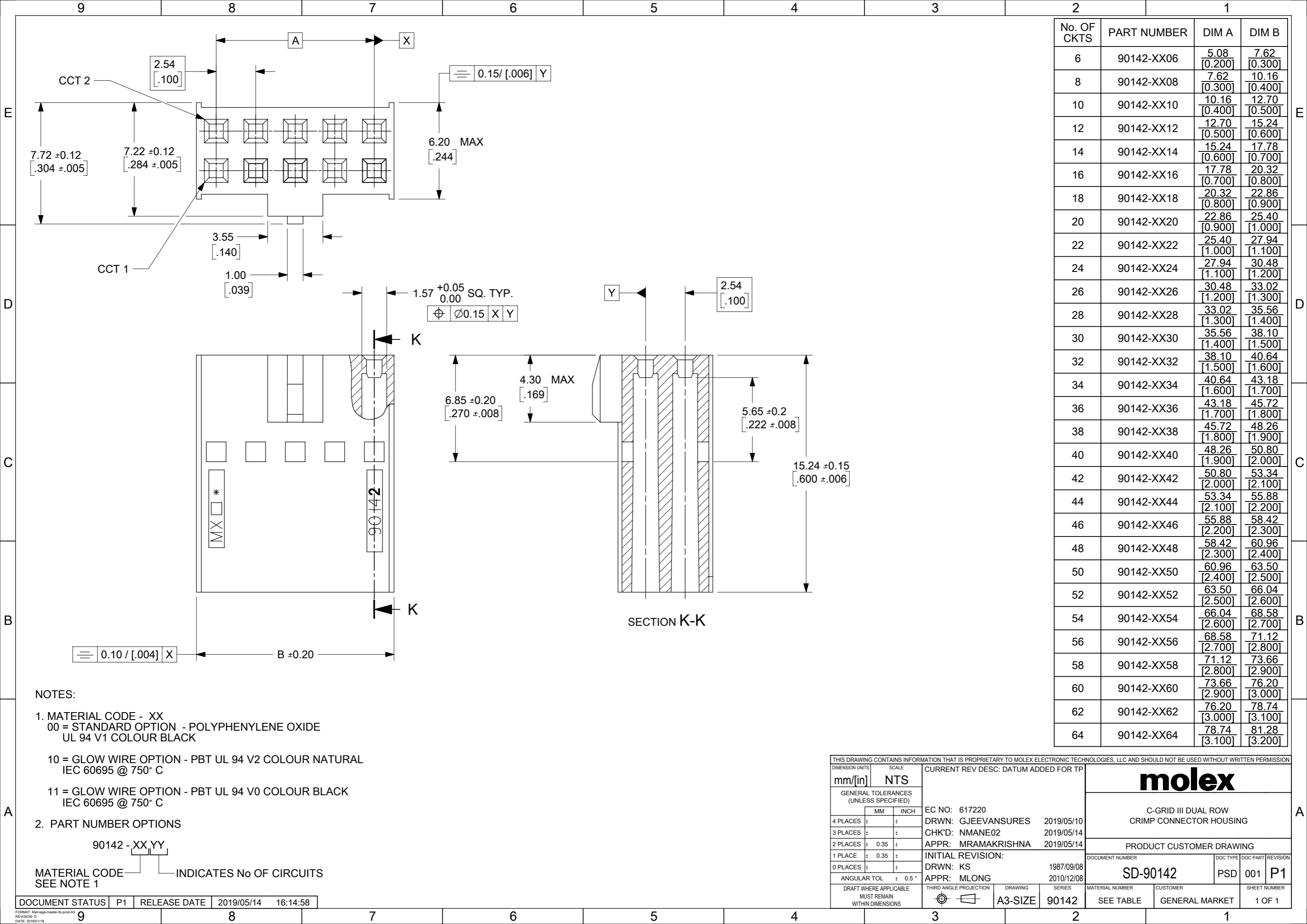
## 可配插/可连接使用的产品

### 可配插部件

描述	产品编号
C-Grid III Right-Angle Dual Row Headers	<u>90122</u>
C-Grid III Dual Row Headers	<u>90130</u>
C-Grid III Vertical Dual Row Headers	<u>90131</u>

### 可连接使用部件

描述	产品编号
Pre-Crimped Lead C-Grid III Female-to-C-Grid III Female, Tin (Sn) Plating, 150.00mm Length, 22 AWG, Black	<u><a href="/content/molex/molex-dot-com/cn/zh/products/product-page.html/797582022.html">/content/molex/molex-dot-com/cn/zh/products/product-page.html/797582022.html</a></u>
Pre-Crimped Lead C-Grid III Female-to-C-Grid III Female, Tin (Sn) Plating, 300.00mm Length, 22 AWG, Black	<u><a href="/content/molex/molex-dot-com/cn/zh/products/product-page.html/797582023.html">/content/molex/molex-dot-com/cn/zh/products/product-page.html/797582023.html</a></u>
C-Grid III Female Crimp Terminals	<u>90119</u>



No. OF CKTS	PART NUMBER	DIM A	DIM B
6	90142-XX06	5.08 [0.200]	7.62 [0.300]
8	90142-XX08	7.62 [0.300]	10.16 [0.400]
10	90142-XX10	10.16 [0.400]	12.70 [0.500]
12	90142-XX12	12.70 [0.500]	15.24 [0.600]
14	90142-XX14	15.24 [0.600]	17.78 [0.700]
16	90142-XX16	17.78 [0.700]	20.32 [0.800]
18	90142-XX18	20.32 [0.800]	22.86 [0.900]
20	90142-XX20	22.86 [0.900]	25.40 [1.000]
22	90142-XX22	25.40 [1.000]	27.94 [1.100]
24	90142-XX24	27.94 [1.100]	30.48 [1.200]
26	90142-XX26	30.48 [1.200]	33.02 [1.300]
28	90142-XX28	33.02 [1.300]	35.56 [1.400]
30	90142-XX30	35.56 [1.400]	38.10 [1.500]
32	90142-XX32	38.10 [1.500]	40.64 [1.600]
34	90142-XX34	40.64 [1.600]	43.18 [1.700]
36	90142-XX36	43.18 [1.700]	45.72 [1.800]
38	90142-XX38	45.72 [1.800]	48.26 [1.900]
40	90142-XX40	48.26 [1.900]	50.80 [2.000]
42	90142-XX42	50.80 [2.000]	53.34 [2.100]
44	90142-XX44	53.34 [2.100]	55.88 [2.200]
46	90142-XX46	55.88 [2.200]	58.42 [2.300]
48	90142-XX48	58.42 [2.300]	60.96 [2.400]
50	90142-XX50	60.96 [2.400]	63.50 [2.500]
52	90142-XX52	63.50 [2.500]	66.04 [2.600]
54	90142-XX54	66.04 [2.600]	68.58 [2.700]
56	90142-XX56	68.58 [2.700]	71.12 [2.800]
58	90142-XX58	71.12 [2.800]	73.66 [2.900]
60	90142-XX60	73.66 [2.900]	76.20 [3.000]
62	90142-XX62	76.20 [3.000]	78.74 [3.100]
64	90142-XX64	78.74 [3.100]	81.28 [3.200]

- NOTES:
- MATERIAL CODE - XX  
 00 = STANDARD OPTION - POLYPHENYLENE OXIDE  
 UL 94 V1 COLOUR BLACK  
  
 10 = GLOW WIRE OPTION - PBT UL 94 V2 COLOUR NATURAL  
 IEC 60695 @ 750° C  
  
 11 = GLOW WIRE OPTION - PBT UL 94 V0 COLOUR BLACK  
 IEC 60695 @ 750° C
  - PART NUMBER OPTIONS

90142 - XX YY  
 MATERIAL CODE INDICATES No OF CIRCUITS  
 SEE NOTE 1

THIS DRAWING CONTAINS INFORMATION THAT IS PROPRIETARY TO MOLEX ELECTRONIC TECHNOLOGIES, LLC AND SHOULD NOT BE USED WITHOUT WRITTEN PERMISSION		CURRENT REV DESC: DATUM ADDED FOR TP	
DIMENSION UNITS mm/[in]	SCALE NTS	<p><b>molex</b></p> <p>C-GRID III DUAL ROW CRIMP CONNECTOR HOUSING</p> <p>PRODUCT CUSTOMER DRAWING</p> <p>DOCUMENT NUMBER: SD-90142    DOC TYPE: PSD    DOC PART: 001    REVISION: P1</p>	
GENERAL TOLERANCES (UNLESS SPECIFIED)			
4 PLACES ±	3 PLACES ±		
2 PLACES ± 0.35	1 PLACE ± 0.35		
0 PLACES ±	ANGULAR TOL ± 0.5°	EC NO: 617220	DRWN: GJEEVANSURES 2019/05/10
DRAFT WHERE APPLICABLE MUST REMAIN WITHIN DIMENSIONS		CHK'D: NMANE02 2019/05/14	APPR: MRAMAKRISHNA 2019/05/14
THIRD ANGLE PROJECTION		INITIAL REVISION:	DRWN: KS 1987/09/08
DRAWING A3-SIZE		APPR: MLONG 2010/12/08	SERIES 90142
MATERIAL NUMBER SEE TABLE		CUSTOMER GENERAL MARKET	SHEET NUMBER 1 OF 1