



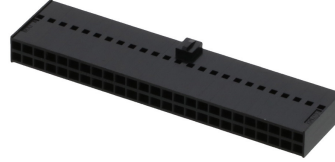
产品编号 : [901420050](#)

Product Description : 2.54mm Pitch C-Grid III Crimp Housing Dual Row, 50 Circuits, Black

系列号 : 90142

状态 : Active

Product Category : Connector Housings



文件和资源

图纸

[图纸 901420050_sd.pdf](#)

3D 模型和设计文件

[3D模型 901420050_stp.zip](#)

规格

[产品规格 PS-99020-0001-001.pdf](#)

产物环境合规

合规

GADSL/IMDS	Not Relevant
China RoHS	
EU ELV	Not Relevant
Low-Halogen Status	Low-Halogen per IEC 61249-2-21
REACH SVHC	Not Contained per D(2023)3788-DC (14 Jun 2023)
EU RoHS	Compliant per EU 2015/863

多部分产品合规性声明

- Eu RoHS
- REACH SVHC
- Low-Halogen

多部分行业合规性文件

- IPC 1752A Class C
- IPC 1752A Class D
- Molex Product Compliance Declaration

- IEC-62474

- chemSHERPA (xml)

欧盟 RoHS 合格证书

产品详情

常规

状态	活动
类别	Connector Housings
系列	90142
说明	2.54mm Pitch C-Grid III Crimp Housing Dual Row, 50 Circuits, Black
应用	Signal, Wire-to-Board
产品系列	C-Grid III Interconnects
产品名称	C-Grid III
UPC	800753656024

机构

CSA	LR19980
UL	E29179

物理

断开	否
电路数 (最多)	50
颜色-树脂	黑色
性别	Receptacle
符合灼热丝规范	否
插接极性	无
锁定插接部位	是
材料 - 树脂	PP0
净重	3.387/g
行数	2
包装形式	Bag
面板安装式	否
间距 - 插配接口	2.54mm

间距 - 终端界面	2.54mm
有极性的插配件	是
端口	0
可堆叠的	否
运行温度范围	-55° to +105° C

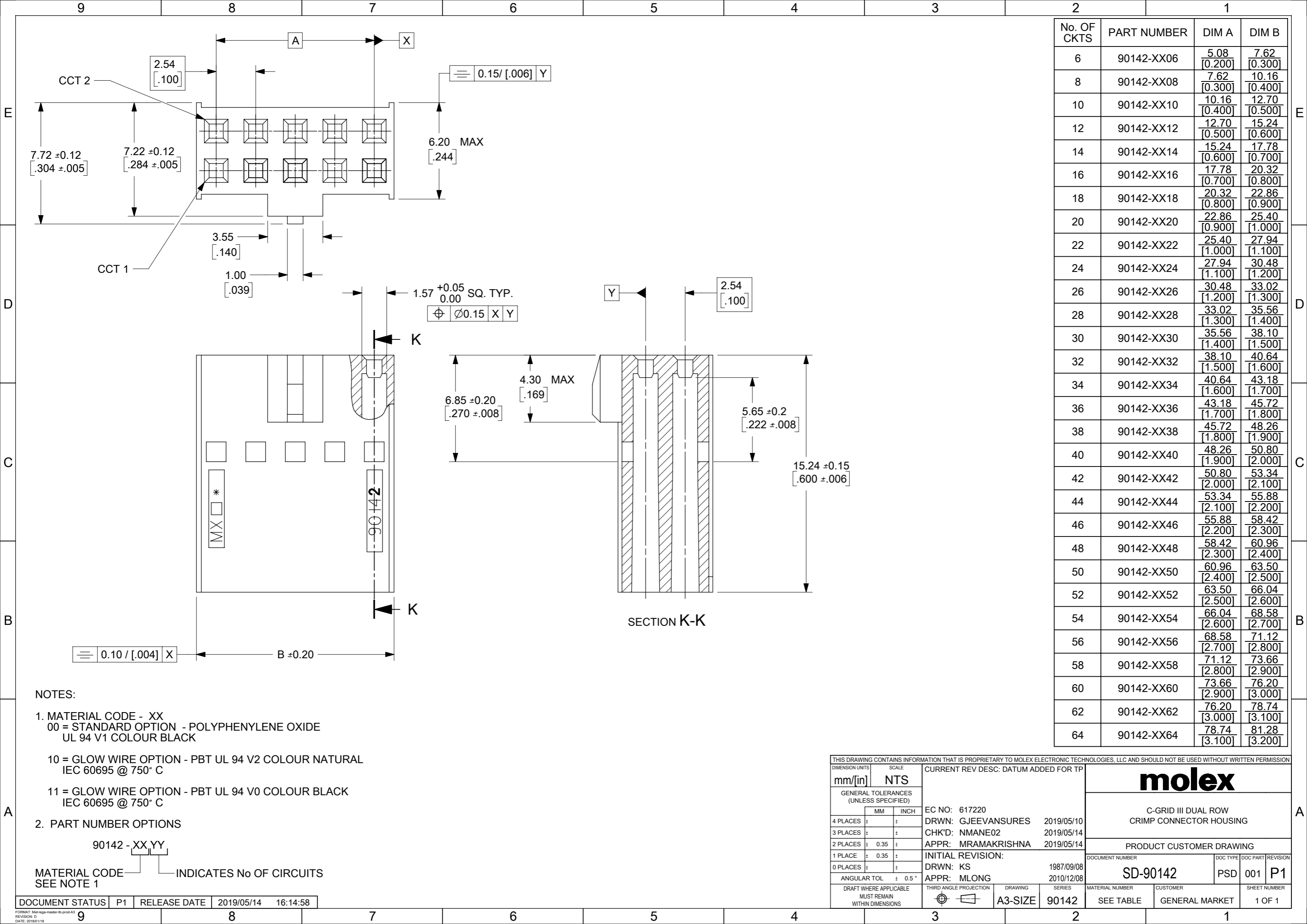
可配插/可连接使用的产品

可配插部件

描述	产品编号
C-Grid III Right-Angle Dual Row Headers	<u>90122</u>
C-Grid III Dual Row Headers	<u>90130</u>
C-Grid III Vertical Dual Row Headers	<u>90131</u>

可连接使用部件

描述	产品编号
Pre-Crimped Lead C-Grid III Female-to-C-Grid III Female, Tin (Sn) Plating, 150.00mm Length, 22 AWG, Black	/content/molex/molex-dot-com/cn/zh/products/product-page.html/797582022.html
Pre-Crimped Lead C-Grid III Female-to-C-Grid III Female, Tin (Sn) Plating, 300.00mm Length, 22 AWG, Black	/content/molex/molex-dot-com/cn/zh/products/product-page.html/797582023.html
C-Grid III Female Crimp Terminals	<u>90119</u>



No. OF CKTS	PART NUMBER	DIM A	DIM B
6	90142-XX06	5.08 [0.200]	7.62 [0.300]
8	90142-XX08	7.62 [0.300]	10.16 [0.400]
10	90142-XX10	10.16 [0.400]	12.70 [0.500]
12	90142-XX12	12.70 [0.500]	15.24 [0.600]
14	90142-XX14	15.24 [0.600]	17.78 [0.700]
16	90142-XX16	17.78 [0.700]	20.32 [0.800]
18	90142-XX18	20.32 [0.800]	22.86 [0.900]
20	90142-XX20	22.86 [0.900]	25.40 [1.000]
22	90142-XX22	25.40 [1.000]	27.94 [1.100]
24	90142-XX24	27.94 [1.100]	30.48 [1.200]
26	90142-XX26	30.48 [1.200]	33.02 [1.300]
28	90142-XX28	33.02 [1.300]	35.56 [1.400]
30	90142-XX30	35.56 [1.400]	38.10 [1.500]
32	90142-XX32	38.10 [1.500]	40.64 [1.600]
34	90142-XX34	40.64 [1.600]	43.18 [1.700]
36	90142-XX36	43.18 [1.700]	45.72 [1.800]
38	90142-XX38	45.72 [1.800]	48.26 [1.900]
40	90142-XX40	48.26 [1.900]	50.80 [2.000]
42	90142-XX42	50.80 [2.000]	53.34 [2.100]
44	90142-XX44	53.34 [2.100]	55.88 [2.200]
46	90142-XX46	55.88 [2.200]	58.42 [2.300]
48	90142-XX48	58.42 [2.300]	60.96 [2.400]
50	90142-XX50	60.96 [2.400]	63.50 [2.500]
52	90142-XX52	63.50 [2.500]	66.04 [2.600]
54	90142-XX54	66.04 [2.600]	68.58 [2.700]
56	90142-XX56	68.58 [2.700]	71.12 [2.800]
58	90142-XX58	71.12 [2.800]	73.66 [2.900]
60	90142-XX60	73.66 [2.900]	76.20 [3.000]
62	90142-XX62	76.20 [3.000]	78.74 [3.100]
64	90142-XX64	78.74 [3.100]	81.28 [3.200]

NOTES:

- MATERIAL CODE - XX
 00 = STANDARD OPTION - POLYPHENYLENE OXIDE
 UL 94 V1 COLOUR BLACK

 10 = GLOW WIRE OPTION - PBT UL 94 V2 COLOUR NATURAL
 IEC 60695 @ 750° C

 11 = GLOW WIRE OPTION - PBT UL 94 V0 COLOUR BLACK
 IEC 60695 @ 750° C
- PART NUMBER OPTIONS

90142 - XX YY
 MATERIAL CODE INDICATES No OF CIRCUITS
 SEE NOTE 1

THIS DRAWING CONTAINS INFORMATION THAT IS PROPRIETARY TO MOLEX ELECTRONIC TECHNOLOGIES, LLC AND SHOULD NOT BE USED WITHOUT WRITTEN PERMISSION

DIMENSION UNITS mm/[in]	SCALE NTS	CURRENT REV DESC: DATUM ADDED FOR TP	
GENERAL TOLERANCES (UNLESS SPECIFIED)		molex C-GRID III DUAL ROW CRIMP CONNECTOR HOUSING PRODUCT CUSTOMER DRAWING	
4 PLACES	±		
3 PLACES	±		
2 PLACES	± 0.35		
1 PLACE	± 0.35		
0 PLACES	±	EC NO: 617220 DRWN: GJEEVANSURES 2019/05/10 CHK'D: NMANE02 2019/05/14 APPR: MRAMAKRISHNA 2019/05/14	
ANGULAR TOL	± 0.5°	INITIAL REVISION: DRWN: KS 1987/09/08 APPR: MLONG 2010/12/08	
DRAFT WHERE APPLICABLE MUST REMAIN WITHIN DIMENSIONS	THIRD ANGLE PROJECTION	DRAWING A3-SIZE	SERIES 90142
DOCUMENT STATUS P1	RELEASE DATE 2019/05/14 16:14:58	MATERIAL NUMBER SEE TABLE	CUSTOMER GENERAL MARKET
		DOCUMENT NUMBER SD-90142	DOC TYPE PSD
		DOC PART 001	REVISION P1
		SHEET NUMBER 1 OF 1	