



产品编号 : 901471106

Product Description : C-Grid III PC Board Connector, Single Row, Vertical, 6 Circuits, Tin (Sn) Plating

系列号 : 90147

状态 : Active

Product Category : PCB Headers and Receptacles

文件和资源

图纸

图纸 901471106_sd.pdf

3D 模型和设计文件

3D模型 901471106_stp.zip

规格

应用规格 713080001-AS-000.pdf


应用规格 901190001-AS-000.pdf

包装规格 PK-90147-001-002.pdf

产品规格 PS-99020-0001-001.pdf

产物环境合规

合规

GADSL/IMDS	Not Relevant
China RoHS	
EU ELV	Not Relevant
Low-Halogen Status	Not Low-Halogen per IEC 61249-2-21
REACH SVHC	Not Contained per D(2023)8585-DC (23 Jan 2024)
EU RoHS	Compliant per EU 2015/863

多部分产品合规性声明

- Eu RoHS
- REACH SVHC
- Low-Halogen

- IPC 1752A Class C
- IPC 1752A Class D

- Molex Product Compliance Declaration

- IEC-62474

- chemSHERPA (xml)

欧盟 RoHS 合格证书

产品详情

常规

状态	活动
类别	PCB Headers and Receptacles
系列	90147
说明	C-Grid III PC Board Connector, Single Row, Vertical, 6 Circuits, Tin (Sn) Plating
应用	Board-to-Board, Signal
元件类型	PCB Receptacle
产品系列	C-Grid Connector Products
产品名称	C-Grid III
UPC	800753676510

机构

CSA	LR19980
UL	E29179

电气

每触点最大电流	3.0A
PCB接地	否
电压 - 最大	350V

物理

回路数 (已载入)	6
电路数 (最多)	6
颜色-树脂	黑色
阻燃性	94V-0
符合灼热丝规范	否
可配插产品指南	否
插接极性	无

锁定插接部位	否
材料 - 金属	Phosphor Bronze
材料 - 接合部位电镀	Tin
材料 - 终端电镀	Tin
材料 - 树脂	Polyester
净重	0.522/g
行数	1
方向	垂直
包装形式	Tube
PC 焊脚长度	2.90mm
PCB 定位器	否
PCB 保持力	是
推荐的 PCB 厚度	1.60mm
间距 - 插配接口	2.54mm
间距 - 终端界面	2.54mm
最薄镀层 - 接合部位	1.016 μ m
最薄镀层 - 端接	1.016 μ m
PCB 极性	否
运行温度范围	-55° to +105° C
终端界面类型	Through Hole

进程

无铅	WAVE
----	------

可配插/可连接使用的产品

可配插部件

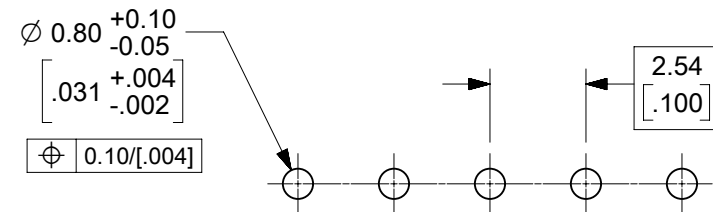
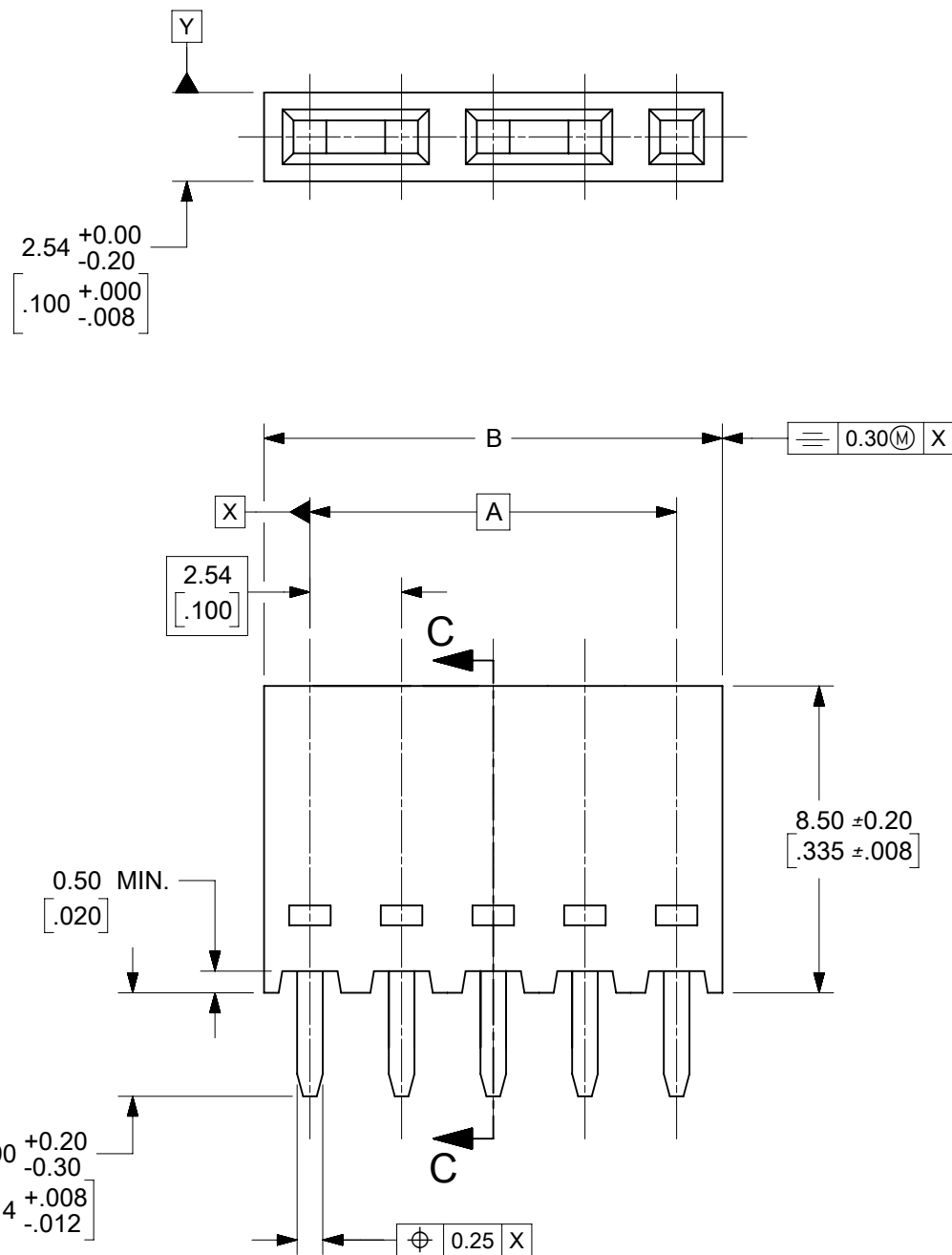
描述	产品编号
C-Grid III Vertical Single Row Headers	<u>90120</u>
C-Grid III Right-Angle Single Row Headers	<u>90121</u>

可连接使用部件

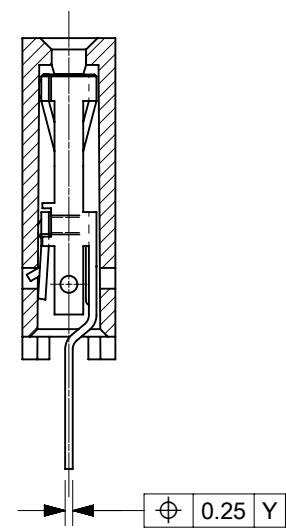
描述	产品编号
----	------

C-Grid III Vertical Single Row Headers	<u>90120</u>
C-Grid III Right-Angle Single Row Headers	<u>90121</u>

This document was generated on Jun 03, 2024



RECOMMENDED P.C. BOARD
HOLE PATTERN
FOR STRAIGHT PINS.



SECTION C-C
SHOWING STRAIGHT PINS.

NOTES:

1. CONTACT-PLATED PHOSPHOR BRONZE.
2. HOUSING-15% GLASS FILLED POLYESTER.
COLOUR: BLACK.
3. FOR 0.635/[.025] SQ. MALE PINS THE LENGTH MUST BE 5.65/[.222] MIN & 7.00/[.276] MAX. TO ENSURE GOOD CONNECTION WITH CONTACT.
4. PRODUCT SPECIFICATION: PS-99020-0001.
5. PCB THICKNESS 1.6MM

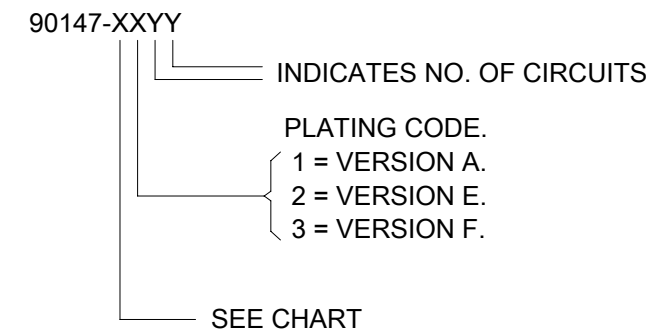
THIS DRAWING CONTAINS INFORMATION THAT IS PROPRIETARY TO MOLEX ELECTRONIC TECHNOLOGIES, LLC AND SHOULD NOT BE USED WITHOUT WRITTEN PERMISSION											
DIMENSION UNITS MM/INCH		SCALE 5:1		CURRENT REV DESC: MIGRATED TO NX				molex		C-GRID III, SINGLE ROW VERTICAL P.C. BOARD CONNECTOR ASSEMBLY.	
GENERAL TOLERANCES (UNLESS SPECIFIED)				EC NO: 613447							
				4 PLACES ±		DRWN: ABABU01		2019/03/06		PRODUCT CUSTOMER DRAWING	
				3 PLACES ±		CHK'D: NMANE02		2019/03/11			
				2 PLACES ±		APPR: MRAMAKRISHNA		2019/03/11		DOCUMENT NUMBER	
				1 PLACE ±		INITIAL REVISION:				SDA-90147	
				0 PLACES ±		DRWN: DB		1987/07/14		DOC TYPE DOC PART REVISION	
		ANGULAR TOL ± 2.0°		APPR: JDENNEHY		2005/07/07				PSD 001 AD1	
DRAFT WHERE APPLICABLE MUST REMAIN WITHIN DIMENSIONS		THIRD ANGLE PROJECTION		DRAWING		SERIES		MATERIAL NUMBER		CUSTOMER	
				B-SIZE		90147		SEE TABLE		GENERAL MARKET	
										SHEET NUMBER	
										1 OF 2	

PART NO'S - STRAIGHT PINS		NO. OF CKTS.	A	B ^{+0.00} -0.30 [B ^{+0.000} -.012]	QTY. PER TUBE
STANDARD	CUSTOMER SPECIFIC				
90147-1X02	_____	2	2.54/[.100]	5.08/[.200]	105
90147-1X03	_____	3	5.08/[.200]	7.62/[.300]	72
90147-1X04	_____	4	7.62/[.300]	10.16/[.400]	52
90147-1X05	90147-9105	5	10.16/[.400]	12.70/[.500]	44
90147-1X06	_____	6	12.70/[.500]	15.24/[.600]	36
90147-1X07	_____	7	15.24/[.600]	17.78/[.700]	30
90147-1X08	_____	8	17.78/[.700]	20.32/[.800]	26
90147-1X09	_____	9	20.32/[.800]	22.86/[.900]	22
90147-1X10	_____	10	22.86/[.900]	25.40/[1.000]	22
90147-1X11	_____	11	25.40/[1.000]	27.94/[1.100]	20
90147-1X12	_____	12	27.94/[1.100]	30.48/[1.200]	18
90147-1X13	_____	13	30.48/[1.200]	33.02/[1.300]	16
90147-1X14	_____	14	33.02/[1.300]	35.56/[1.400]	14
90147-1X15	_____	15	35.56/[1.400]	38.10/[1.500]	14
90147-1X16	_____	16	38.10/[1.500]	40.64/[1.600]	13
90147-1X17	_____	17	40.64/[1.600]	43.18/[1.700]	13
90147-1X18	_____	18	43.18/[1.700]	45.72/[1.800]	12
90147-1X19	_____	19	45.72/[1.800]	48.26/[1.900]	12
90147-1X20	_____	20	48.26/[1.900]	50.80/[2.000]	11
90147-1X21	_____	21	50.80/[2.000]	53.34/[2.100]	11
90147-1X22	_____	22	53.34/[2.100]	55.88/[2.200]	10
90147-1X23	_____	23	55.88/[2.200]	58.42/[2.300]	9
90147-1X24	_____	24	58.42/[2.300]	60.96/[2.400]	9
90147-1X25	_____	25	60.96/[2.400]	63.50/[2.500]	8
90147-1X26	_____	26	63.50/[2.500]	66.04/[2.600]	8
90147-1X27	_____	27	66.04/[2.600]	68.58/[2.700]	8
90147-1X28	_____	28	68.58/[2.700]	71.12/[2.800]	7
90147-1X29	_____	29	71.12/[2.800]	73.66/[2.900]	7
90147-1X30	_____	30	73.66/[2.900]	76.20/[3.000]	7
90147-1X31	_____	31	76.20/[3.000]	78.74/[3.100]	7
90147-1X32	_____	32	78.74/[3.100]	81.28/[3.200]	6

PLATING VERSION A
PRE-PLATED HOT DIP TIN
 1.0 TO 2.5 μm [.000040" TO .000100"].

PLATING VERSION E
 1.27 TO 1.78 μm [.000050" TO .000070"] NICKEL
 OVERALL, 0.38 TO 0.64 μm [.000015" TO .000025"]
 GOLD ON CONTACT AREA (OVER NICKEL).
 3 TO 5 μm [.000120" TO .000200"] TIN
 ON SOLDER TAILS (OVER NICKEL).

PLATING VERSION F.
 1.27 TO 1.78 μm [.000050" TO .000070"] NICKEL
 OVERALL, 0.76 TO 1.0 μm [.000030" TO .000040"]
 GOLD ON CONTACT AREA (OVER NICKEL).
 3 TO 5 μm [.000120" TO .000200"] TIN
 ON SOLDER TAILS (OVER NICKEL).



STANDARD PRODUCTS

THIS DRAWING CONTAINS INFORMATION THAT IS PROPRIETARY TO MOLEX ELECTRONIC TECHNOLOGIES, LLC AND SHOULD NOT BE USED WITHOUT WRITTEN PERMISSION													
DIMENSION UNITS MM/INCH		SCALE 1:1		CURRENT REV DESC: MIGRATED TO NX						molex			
GENERAL TOLERANCES (UNLESS SPECIFIED)				EC NO: 613447		DRWN: ABABU01 2019/03/06		C-GRID III, SINGLE ROW VERTICAL P.C. BOARD CONNECTOR ASSEMBLY.					
4 PLACES ±		±		CHK'D: NMANE02 2019/03/11		APPR: MRAMAKRISHNA 2019/03/11		PRODUCT CUSTOMER DRAWING					
3 PLACES ±		±		INITIAL REVISION:		DRWN: DB 1987/07/14		DOCUMENT NUMBER		DOC TYPE	DOC PART	REVISION	
2 PLACES ±		±		APPR: JDENNEHY 2005/07/07		SDA-90147		PSD		001	AD1		
1 PLACE ±		±		DRAFT WHERE APPLICABLE MUST REMAIN WITHIN DIMENSIONS		THIRD ANGLE PROJECTION		DRAWING		SERIES	MATERIAL NUMBER	CUSTOMER	SHEET NUMBER
0 PLACES ±		±		ANGULAR TOL ± 2.0°		B-SIZE		90147		SEE TABLE		GENERAL MARKET	2 OF 2