



PRODUCT SPECIFICATION

ML-XT COMMERCIAL VEHICLE CONNECTOR SERIES

1.0 SCOPE

This Product Specification relates to the ML-XT Commercial Vehicle (CV), Power and/or Signal wire-to-wire connector system. This system consists of 7 circuit sizes: 2, 3, 4, 6, 8, 12 and 18cct. The product terminals terminate with 20 to 12AWG wires using crimp technology (Please Contact Molex Sales representative for 12AWG options).

Note: Product Qualification of the connector series was determined by testing of the 2cct connector. Individual tests and partial test sequences for remaining circuit sizes are available on request.

2.0 PRODUCT DESCRIPTION

2.1 PRODUCT NAME AND SERIES NUMBER(S)

ML-XT Receptacle Assembly:	93444
ML-XT Plug Assembly:	93445
ML-XT Receptacle Terminal (Male Pin):	84524
ML-XT Plug Terminal (Female Socket):	84525
ML-XT Receptacle Wedgeloock:	93447
ML-XT Plug Wedgeloock:	93448
ML-XT Receptacle W/Heat Shrink Assembly:	93444 Variation
ML-XT Plug W/Heat Shrink Assembly:	93445 Variation

2.2 DIMENSIONS, MATERIALS, PLATINGS AND MARKINGS

Housings:	Nylon, 30% Glass filled, UL 94 HB
Plug Seal:	Liquid Silicone Rubber
Back Seal:	High Consistency Rubber
Wedgeloocks:	Nylon, 30% Glass filled, UL 94 HB
Female Socket Terminal:	Copper Alloy, Nickel plating and Hard Gold over Nickel option
Male Pin Terminal:	Copper Alloy, Nickel plating and Hard Gold over Nickel option

2.3 SAFETY AGENCY APPROVALS

UL File Number:	Not Applicable
CSA File Number:	Not Applicable
TÜV License Number:	Not Applicable

勝特力材料 886-3-5753170
 勝特力电子(上海) 86-21-34970699
 勝特力电子(深圳) 86-755-83298787
[Http://www.100y.com.tw](http://www.100y.com.tw)

3.0 APPLICABLE DOCUMENTS AND SPECIFICATIONS

934430010 PSD	ML-XT 2cct Assembly Sales Drawing
934430020 PSD	ML-XT 3cct Assembly Sales Drawing
934430030 PSD	ML-XT 4cct Assembly Sales Drawing
934430040 PSD	ML-XT 6cct Assembly Sales Drawing
934430050 PSD	ML-XT 8cct Assembly Sales Drawing
934430060 PSD	ML-XT 12cct Assembly Sales Drawing
934430070 PSD	ML-XT 18cct Assembly Sales Drawing
934430002 PSK	ML-XT Packaging Specification
845240010 PSD	Male Pin Terminal 16-18AWG Sales Drawing
845240020 PSD	Male Pin Terminal 14-18AWG Thin Wall Sales Drawing
845240030 PSD	Male Pin Terminal 14-18AWG Sales Drawing
845240050 PSD	Male Pin Terminal 16-20AWG Sales Drawing

REVISION: B2	ECR/ECN INFORMATION: EC No: 113710 DATE: 2017/05/22	TITLE: ML-XT CV CONN SERIES PRODUCT SPECIFICATION	SHEET No. 1 of 8
DOCUMENT NUMBER: 934430010/PS/P/B2	CREATED / REVISED BY: JFLETCHER	CHECKED BY: FDUGGAN	APPROVED BY: JDWALLACE



PRODUCT SPECIFICATION

845250010 PSD Female Socket Terminal 16-18AWG Sales Drawing
 845250005 PSD Female Socket Terminal 14-18AWG Thin Wall Sales Drawing
 845250070 PSD Female Socket Terminal 14-18AWG Sales Drawing
 845250050 PSD Female Socket Terminal 16-20AWG Sales Drawing
 934941000 PSD ML-XT Blind Cavity Plug Sales Drawing

4.0 RATINGS

4.1 CURRENT AND APPLICABLE WIRES

AWG	Amps
20	7.5
18	10
16	13
14	13

4.2 TEMPERATURE

Operating: - 55°C to + 125°C
 Non-operating: - 55°C to + 125°C

5.0 PERFORMANCE

5.1 VISUAL REQUIREMENTS

ITEM	DESCRIPTION	TEST CONDITION	REQUIREMENT
1	Examination of Product SAE J2030, 6.1	Parts checked for: Identification, Workmanship Finish, Markings, Cosmetic issues, Tool marks, Torn seals etc.	Meets requirements of product drawing. All parts shall be free of hazardous substances. All parts to be free of dirt and grease. No Defects
2	Visual Examination SAE J2030, 6.27	Conduct a visual examination for identification of product such as torn seals, cracked plastic, evidence of fluid or dust ingress in sealed connector systems, arcing, charring, melting, or anything that could affect the performance and serviceability of the product.	No Visual Defects as per Section 6.27 SAE J2030

5.2 ELECTRICAL REQUIREMENTS

ITEM	DESCRIPTION	TEST CONDITION	REQUIREMENT
3	Low voltage Resistance SAE J1614, 4.3.6	Test with applied voltage not exceeding 20mV open circuit and the test current shall be limited to 100mA.	Maximum Resistance 10.0mOhms initial 20.0mOhms post endurance testing
4	Insulation Resistance SAE J2030, 6.3	Apply a voltage of 1000 VDC between adjacent terminals and between terminals to ground.	20 MegaOhms Minimum

REVISION:	ECR/ECN INFORMATION:	TITLE:	SHEET No.
B2	EC No: 113710 DATE: 2017/05/22	ML-XT CV CONN SERIES PRODUCT SPECIFICATION	2 of 8
DOCUMENT NUMBER:	CREATED / REVISED BY:	CHECKED BY:	APPROVED BY:
934430010/PS/P/B2	JFLETCHER	FDUGGAN	JDWALLACE



PRODUCT SPECIFICATION

5	Connection Resistance @ Rated Current SAE J2030, 6.4	Mate connectors: Measurements shall be taken after thermal equilibrium at rated current level.	Voltage Drop not to Exceed levels in Table 1 (See Appendix 3)
6	Current Test @ Rated Current SAE J2030, 6.22	Apply maximum rated current to all terminals. Ambient temperature: 125°C +/-3°C for 24H	Voltage Drop not to Exceed levels in Table 3 of Section SAE J2030 6.4.1 (Use PS Rated Current: See Appendix 3)
7	Current Cycling Test @ Rated Current SAE J2030, 6.25	<p>a. 200 off/on cycles, at ambient of 125 °C ± 3 °C, each cycle to consist of 45 min on, 15 min off.</p> <p>b. 50 cycles of following: 20 min on at 125 °C ± 3 °C, 60 off at 21 °C ± 1 °C. Transition rate is to be 3 °C/ min +3/-0 °C/min without current applied.</p> <p>c. Repeat a. and b. to complete 500 cycles</p>	Acceptance criteria per section 6.4 of SAE J2030. (Use PS Rated Current: See Appendix 3)

5.3 MECHANICAL REQUIREMENTS

ITEM	DESCRIPTION	TEST CONDITION	REQUIREMENT
8	Connector Mating Force SAE J2030, 6.9	Mate the male and female connectors. (Latches included)	135 N Maximum
9	Connector Unmating Forces SAE J2030, 6.10	Unmate the male and female connector. (Latches disengaged)	135 N Maximum
10	Terminal Retention in Connector SAE J2030, 6.18	Apply 110N load to the terminals in the connector housing for 1 minute.	No Terminal Unmating
11	Shock (Mechanical) SAE J2030, 6.16	Mate connectors and shock at 50 g with ½ sine wave (11 milliseconds) shocks in the X,Y,Z axes (10 shocks per axis total).	10 Ohms Maximum No discontinuity > 1 microsecond at 100 mA
12	Vibration SAE J2030, 6.15	Mate connectors; Sine sweep of 10 Hz to 2,000 Hz , back to 10 Hz in 20min, Test duration 24hrs 1.78 mm displacement, 20 g acceleration. 12 cycles in each of the 3 mutually perpendicular axis. Apply the rated current per table 3 of SAE J2030 for the first 3 hours in each axis.	10 Ohms Maximum No discontinuity > 1 microsecond at 100 mA for the last hour of vibration in each axis.

REVISION:	ECR/ECN INFORMATION:	TITLE:	SHEET No.
B2	EC No: 113710 DATE: 2017/05/22	ML-XT CV CONN SERIES PRODUCT SPECIFICATION	3 of 8
DOCUMENT NUMBER:	CREATED / REVISED BY:	CHECKED BY:	APPROVED BY:
934430010/PS/P/B2	JFLETCHER	FDUGGAN	JDWALLACE



PRODUCT SPECIFICATION

13	Drop Test SAE J2030, 6.17	8 Drops from a height of 750 +/-25mm onto a concrete floor while attached to a cord 1500 +/- 25mm long. Rotate the connector through 45 degrees for each drop.	See Section 6.17 of SAE J2030
14	Durability between Male and Female connectors SAE J2030, 6.11	Mate and unmate the connectors by hand at 10 cycles per minute for 50 cycles.	See Section 6.11 of SAE J2030
15	Connector Retention SAE J2030, 6.20	Apply an axial pulling force to the mated connectors for 30s.	222N applied to the 2cct
			333N applied to the 3cct
			350N applied to the 4cct and 6cct. Deviation from SAE J2030, 6.20 due to plug design constraints.
			444N applied to the 8cct, 12cct and 18cct.
16	Connector Mismatching SAE J2030, 6.21	Apply an axial force to same circuit size connectors with various keying options	Polarization to resist 178N minimum mating force without change.
17	Terminal Crimp Strength SAE J2030, 6.26.	The tensile strength of the crimped connection shall be tested within the range of 20 mm to 100 mm/ min. If the terminal has a cable insulation crimp it shall be rendered mechanically ineffective.	See Table 6 of SAE J2030, 6.26.

5.4 ENVIRONMENTAL REQUIREMENTS

ITEM	DESCRIPTION	TEST CONDITION	REQUIREMENT
18	Thermal Shock SAE J2030, 6.13	Cabled & mated connectors subjected to 10 cycles of thermal shock (soak @ -55°C ambient then transition within 2 minutes to 125°C ambient & soak before transition back to -55°C. Soak time to ensure internal connector temp is within 5 C of ambient. No evidence of cracking or chipping or other damage / impaired operation allowed.	No evidence of cracking, chipping or other detrimental damage to normal operation.

REVISION:	ECR/ECN INFORMATION:	TITLE:	SHEET No.
B2	EC No: 113710 DATE: 2017/05/22	ML-XT CV CONN SERIES PRODUCT SPECIFICATION	4 of 8
DOCUMENT NUMBER:	CREATED / REVISED BY:	CHECKED BY:	APPROVED BY:
934430010/PS/P/B2	JFLETCHER	FDUGGAN	JDWALLACE



PRODUCT SPECIFICATION

19	<p>Temperature/ Humidity (Cyclic)</p> <p>SAE J2030, 6.24</p>	See Appendix 2	<p>Tested per SAE J2030 6.4 (Use PS Rated Current: See Appendix 3) for power circuit, SAE J1614 4.3.6 for signal circuits (dependent upon power level requirements of contacts), and insulation resistance per SAE J2030 6.3. Visual: No Damage</p>
20	<p>Salt Spray</p> <p>SAE J2030, 6.12</p>	<p>Mated connectors Duration: 96 hours exposure; Atmosphere: salt spray from a 5% by weight solution; Temperature: 35 +/-3°C; Allow to dry for 4 hours.</p>	Visual: No Detrimental evidence of corrosion on the connector or contacts.
21	<p>Fluid Resistance</p>	Submerge mated connectors for 5 cycles of 5 minutes at the specified temperature in the following fluids: motor oil, brake fluid, diesel fuel, 50/50 anti-freeze mixture, Roundup original and aqueous urea.	Visual: No Damage Post Test
22	<p>Water Immersion</p> <p>SAE J2030, 6.19</p>	Place wired connectors in oven at 125°C +/- 3°C for 1H and immediately place in 5% salt solution by weight content and 0.1g/L wetting agent to 1m for 4H. Water temp 23°C +/-3°C. Test for insulation resistance.	<p>Insulation Resistance 20 MegaOhms Minimum. Visual: No moisture inside.</p>
23	<p>Dust Test</p> <p>SAE J2030, 6.23</p>	Expose mated connectors to dust equivalent to air cleaner fine dust defined by SAEJ726. Minimum suspension concentration: 0.88g/m ³ for 24H.	No impairment of function, performance and serviceability per Severity Level 2 of ASABE EP455 Item 5.3.1
24	<p>Pressure Washing</p> <p>SAE J2030, 6.5</p>	The test apparatus should be designed to provide 100% coverage of the exposed surface of the mated and cabled connectors using flat fan spray nozzles located 20 cm to 30 cm away. The test should be run at 40 °C	An Insulation Resistance test (see SAE J2030 section 6.3) shall be conducted after this test.
25	<p>Maintenance Aging</p> <p>SAE J2030, 6.6</p>	Subject 10% of the cavities to ten cycles of inserting and removing its respective contact. The ten cycles shall also include any disassembly required to remove the contacts. The connectors shall be mated and unmated during each cycle.	See Section 6.6 of SAE J2030
26	<p>Temperature Life</p> <p>SAE J2030, 6.7</p>	The cabled-mated connectors shall be subject to 1000 h at 125 °C ± 3 °C without current flowing.	There shall be no evidence of cracking, distortion, or detrimental damage.
27	<p>Ultraviolet Effects</p> <p>SAE J2030, 6.8</p>	Expose the mated connectors for 1000 h per ASTM G 155 with extended U.V filter or ASTM G 154 using an unfiltered UVA 340 lamp with 20 h UV and 4 h of condensation for each cycle.	See section 6.8 of SAE J2030

REVISION:	ECR/ECN INFORMATION:	TITLE:	SHEET No.
B2	<p>EC No: 113710</p> <p>DATE: 2017/05/22</p>	<p>ML-XT CV CONN SERIES</p> <p>PRODUCT SPECIFICATION</p>	5 of 8
DOCUMENT NUMBER:	CREATED / REVISED BY:	CHECKED BY:	APPROVED BY:
934430010/PS/P/B2	JFLETCHER	FDUGGAN	JDWALLACE



PRODUCT SPECIFICATION

6.0 QUALIFICATION TEST GROUPS AND SEQUENCES

No	Item	Test Group				
		1	2	3	4	5
1	Examination of Product	1	1	1	1	1
3	Low-Voltage Resistance	2,14	2,11,16			
4	Insulation Resistance	3,6,8,17,19	3,14	2		2, 13
5	Connection Resistance	4	4	3		3, 15
24	Pressure Washing	5				
25	Maintenance Aging				2	
26	Temperature Life		5	4		4
27	Ultraviolet Effects				3	
8	Mating Forces		6		4	5
9	Unmating Forces		7		5	6
14	Durability		8		6	7
20	Salt Fog	7				
18	Thermal Shock	9	9	5		8
21	Fluid Immersion	10				
12	Vibration	12	10			9
11	Shock	13	12			10
13	Drop Test	15		6		
10	Terminal Retention in Connector				7	
22	Water Immersion	16				
15	Connector Retention			7	8	
16	Mismating				9	
6	Current Test					11

REVISION:	ECR/ECN INFORMATION:	TITLE:	SHEET No.
B2	EC No: 113710 DATE: 2017/05/22	ML-XT CV CONN SERIES PRODUCT SPECIFICATION	6 of 8
DOCUMENT NUMBER:	CREATED / REVISED BY:	CHECKED BY:	APPROVED BY:
934430010/PS/P/B2	JFLETCHER	FDUGGAN	JDWALLACE



PRODUCT SPECIFICATION

23	Dust Test		15			16
19	Temperature /Humidity	18	13			12
7	Current Cycling					14
17	Terminal Crimp Strength				10	
2	Visual Examination	11, 20	17	8	11	17

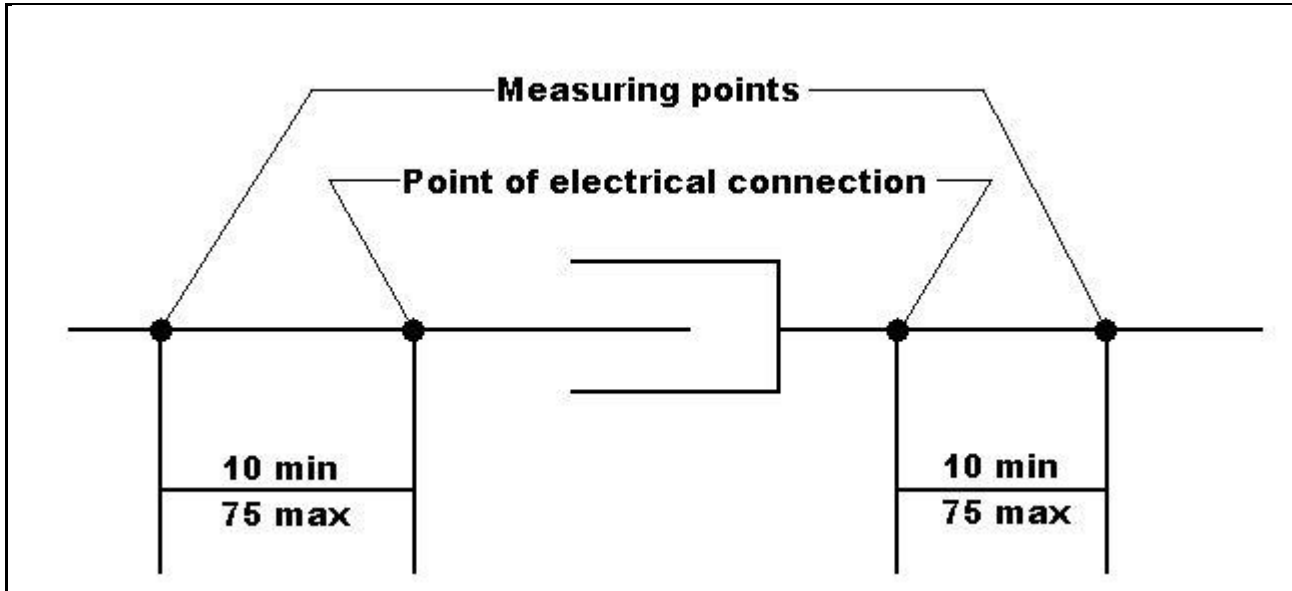
Test Groups 1, 2, 3, and 4 are for sealed signal level connectors.
 Test Groups 3, 4 and 5 are for sealed power level connectors.
 Test Groups 2, 3, and 4 are for unsealed signal level connectors.
 Test Groups 3, 4, and 5 are for unsealed power level connectors

7.0 PACKAGING

Parts shall be packaged to protect against damage during handling, transit and storage; reference the appropriate Packaging Specification.

APPENDIX 1

CONTACT RESISTANCE MEASUREMENT



Notes:

1. All dimensions are in millimetres
2. Measuring points are on the cable
3. Points of electrical connection are typically the joint of the cable to the terminal

REVISION:	ECR/ECN INFORMATION:	TITLE:	SHEET No.
B2	EC No: 113710 DATE: 2017/05/22	ML-XT CV CONN SERIES PRODUCT SPECIFICATION	7 of 8
DOCUMENT NUMBER:	CREATED / REVISED BY:	CHECKED BY:	APPROVED BY:
934430010/PS/P/B2	JFLETCHER	FDUGGAN	JDWALLACE



PRODUCT SPECIFICATION

APPENDIX 2

Test samples to be placed in a temperature/humidity chamber and shall be subjected to 42 cycles described as follows:

- a. Chamber temperature raised to + 55°C at 3°C/min ± 1°C/min.
- b. Chamber held for 16 hours at a relative humidity of 95 % ± 5%
- c. Chamber temperature lowered to - 55°C at 3°C/min ± 1°C/min.
- d. Chamber held for 2 hours
- e. Chamber temperature raised to + 125°C at 3°C/min ± 1°C/min.
- f. Chamber held for 2 hours
- g. Chamber temperature lowered to + 25°C at 3°C/min ± 1°C/min.
- h. Chamber held for remainder of 24 hour cycle

APPENDIX 3

Measurements at specified Current:

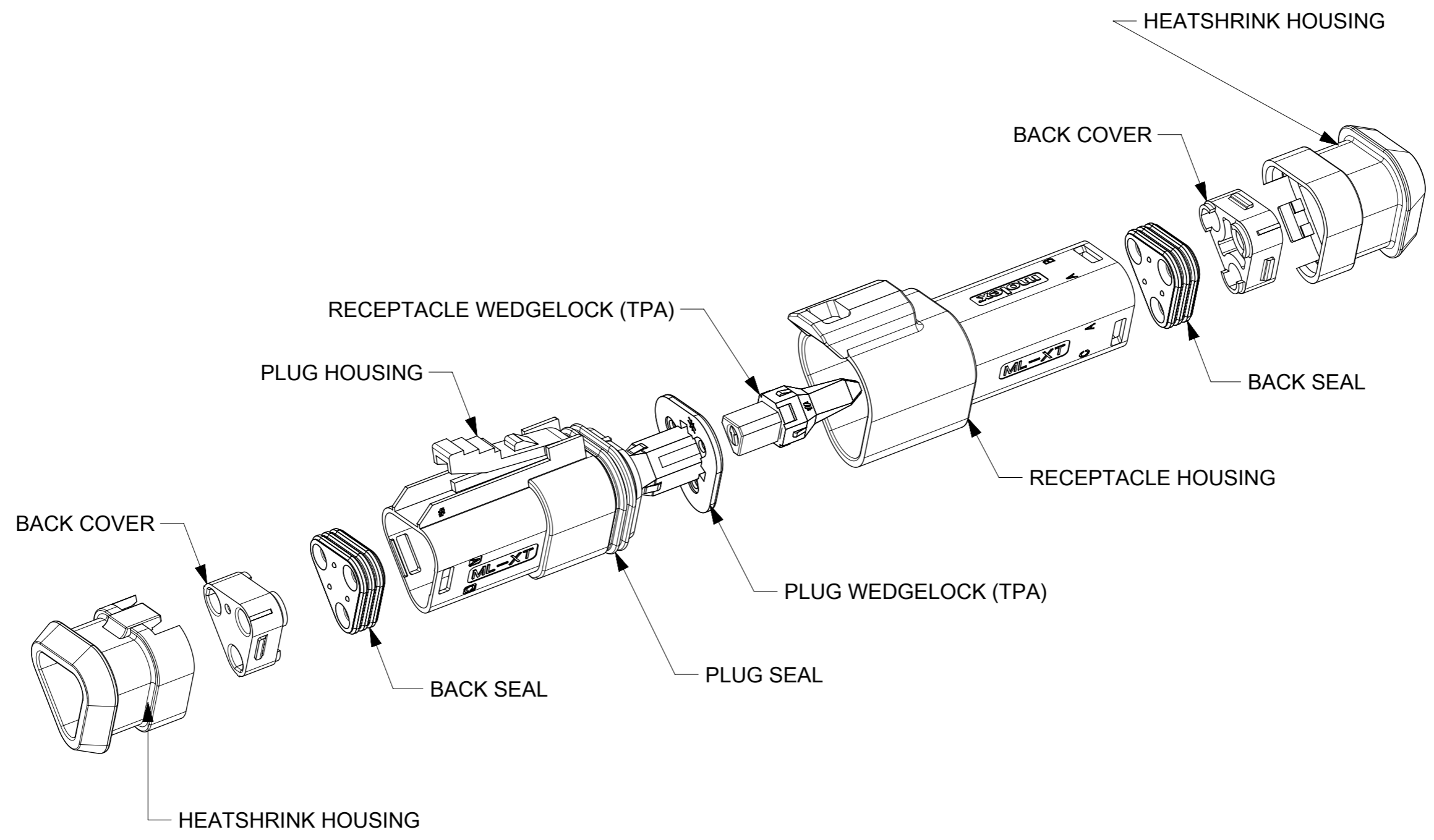
Cable Size mm ² (AWG)	Test Current Amps	Maximum Millivolt Drop (cable to device) (cable to cable)
14	13	100
16	13	100
18	10	100
20	7.5	100

Table 1: Measurements at Specified Current

REVISION: B2	ECR/ECN INFORMATION: EC No: 113710 DATE: 2017/05/22	TITLE: ML-XT CV CONN SERIES PRODUCT SPECIFICATION	SHEET No. 8 of 8
DOCUMENT NUMBER: 934430010/PS/P/B2	CREATED / REVISED BY: JFLETCHER	CHECKED BY: FDUGGAN	APPROVED BY: JDWALLACE

9 8 7 6 5 4 3 2 1

E
D
C
B
A



PENDING APPROVAL

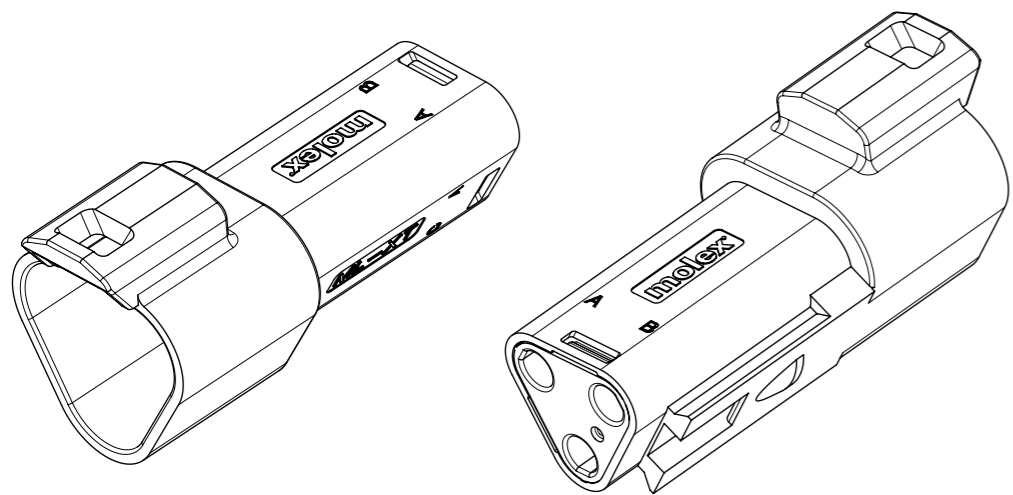
NOTES
1. SEE SHEETS 2 TO 7 FOR ALL UNSPECIFIED NOTES, DIMENSIONS AND PART NUMBERS

THIS DRAWING CONTAINS INFORMATION THAT IS PROPRIETARY TO MOLEX ELECTRONIC TECHNOLOGIES, LLC AND SHOULD NOT BE USED WITHOUT WRITTEN PERMISSION									
SYMBOLS	DIMENSION UNITS	SCALE	CURRENT REV DESC: SEE LONG TEXT						
	mm								
▽ = 0	GENERAL TOLERANCES (UNLESS SPECIFIED)		EC NO: 615165				3CCT ML-XT CV CONNECTOR		
▽ = 0	ANGULAR TOL ± 2.0°		DRWN: MQUINN 2019/08/16						
▽ = 0	4 PLACES ±		CHK'D: JFLETCHER 2019/08/23				PRODUCT CUSTOMER DRAWING		
▽ = 0	3 PLACES ±		APPR:						
▽ = 0	2 PLACES ± 0.1		INITIAL REVISION:				DOCUMENT NUMBER: 934430020 DOC TYPE: PSD DOC PART: 000 REVISION: D2		
▽ = 0	1 PLACE ± 0.2		DRWN: JFLETCHER 2014/12/12						
▽ = 0	0 PLACES ±		APPR: JDWALLACE 2015/01/22				MATERIAL NUMBER: SEE CHART CUSTOMER: GENERAL MARKET SHEET NUMBER: 1 OF 7		
▽ = 0	DRAFT WHERE APPLICABLE MUST REMAIN WITHIN DIMENSIONS		THIRD ANGLE PROJECTION		DRAWING: A3-SIZE	SERIES: 93443			

DOCUMENT STATUS	RQ	RELEASE DATE	
-----------------	----	--------------	--

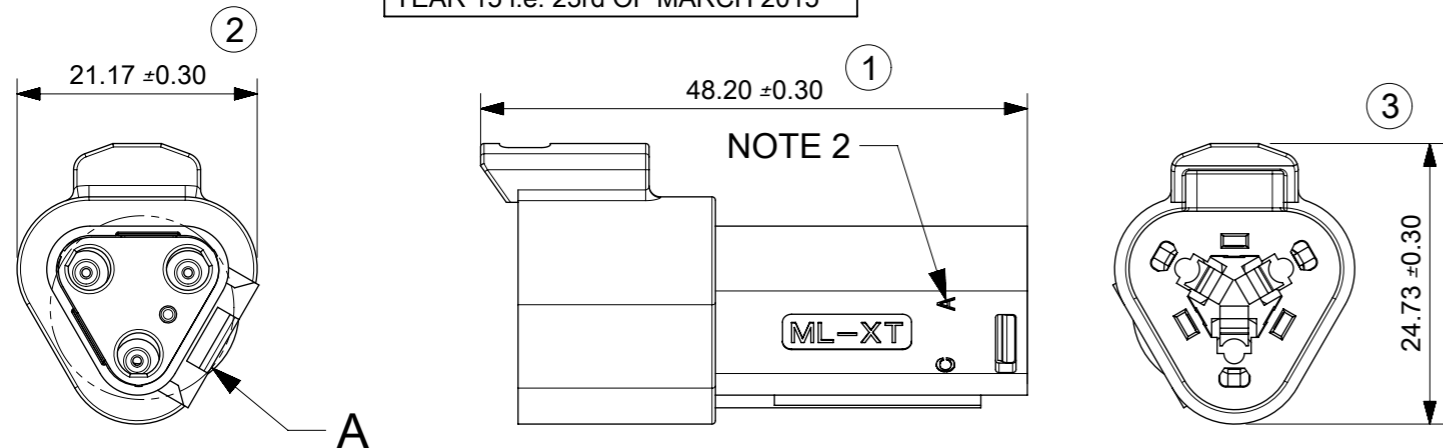
9 8 7 6 5 4 3 2 1

3CCT RECEPTACLE CONNECTOR



DATE CODE: X XX XX
 X—DAY: 1- 7
 X — WEEK: 01 - 52
 X — YEAR: 00 - 99
 # — MACHINE NO. 1
 EXAMPLE: 11315 = DAY 1, WEEK 13,
 YEAR 15 i.e. 23rd OF MARCH 2015

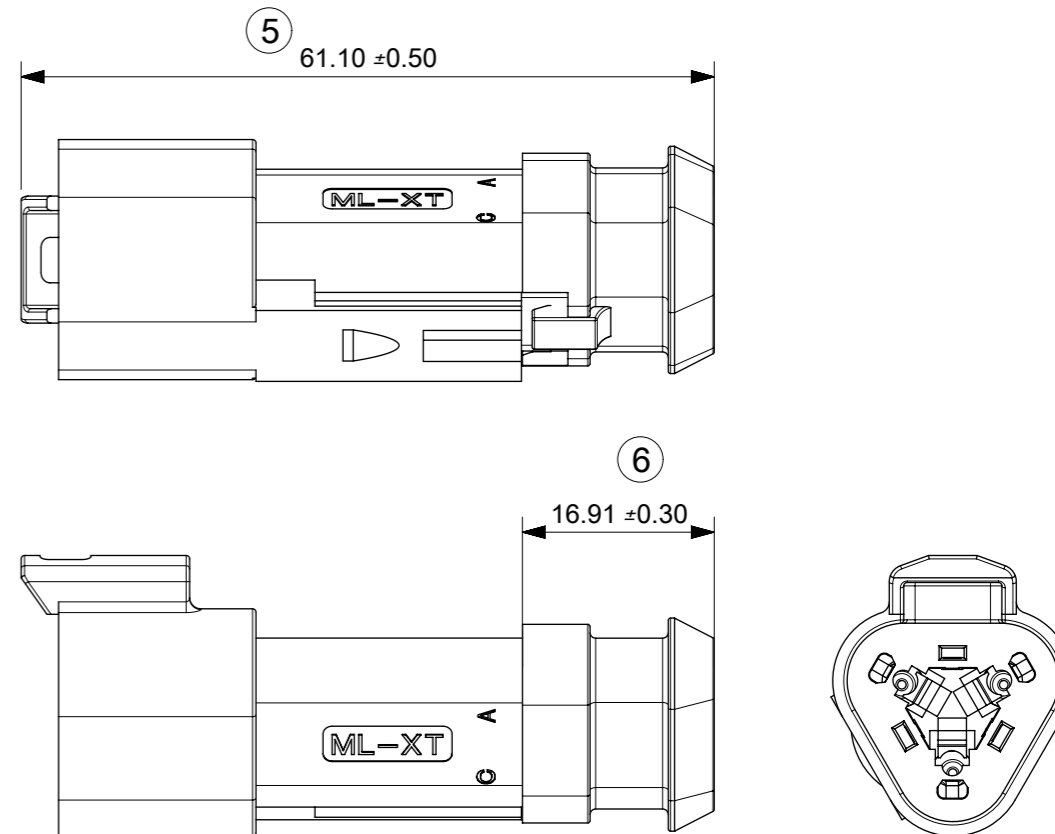
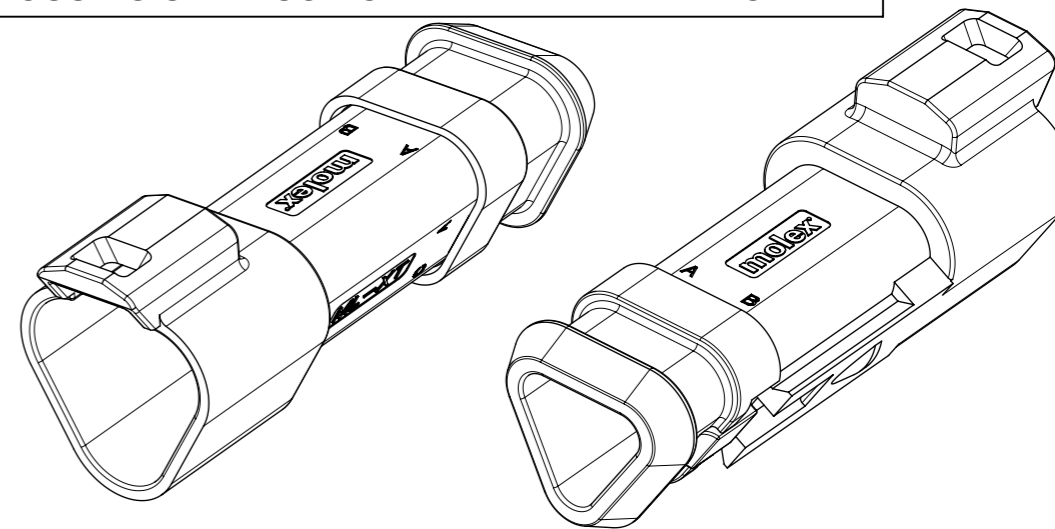
DETAIL A
 SCALE 2:1



- MATERIAL
 HOUSING: NYLON 30% GLASS FILLED
 BACK SEAL: HIGH CONSISTENCY RUBBER
- CIRCUIT IDENTIFICATION
- JACKET RANGE LARGE = \varnothing 2.23MM TO 3.68MM (SEAL COLOUR: LIGHT BLUE)
 JACKET RANGE SMALL = \varnothing 1.20MM TO 3.05MM (SEAL COLOUR: BURNT ORANGE)
- SEE SHEET 3 FOR FINAL PART NUMBER
- SEE 934430010 PS P FOR PRODUCT SPECIFICATION
- SEE 934430002 PS K FOR PACKAGING SPECIFICATION
 INSPECTION NUMBERS 1 - 50 RESERVED FOR SHEET 2
 LAST INSPECTION NO. 6

DOCUMENT STATUS	RQ	RELEASE DATE	
-----------------	----	--------------	--

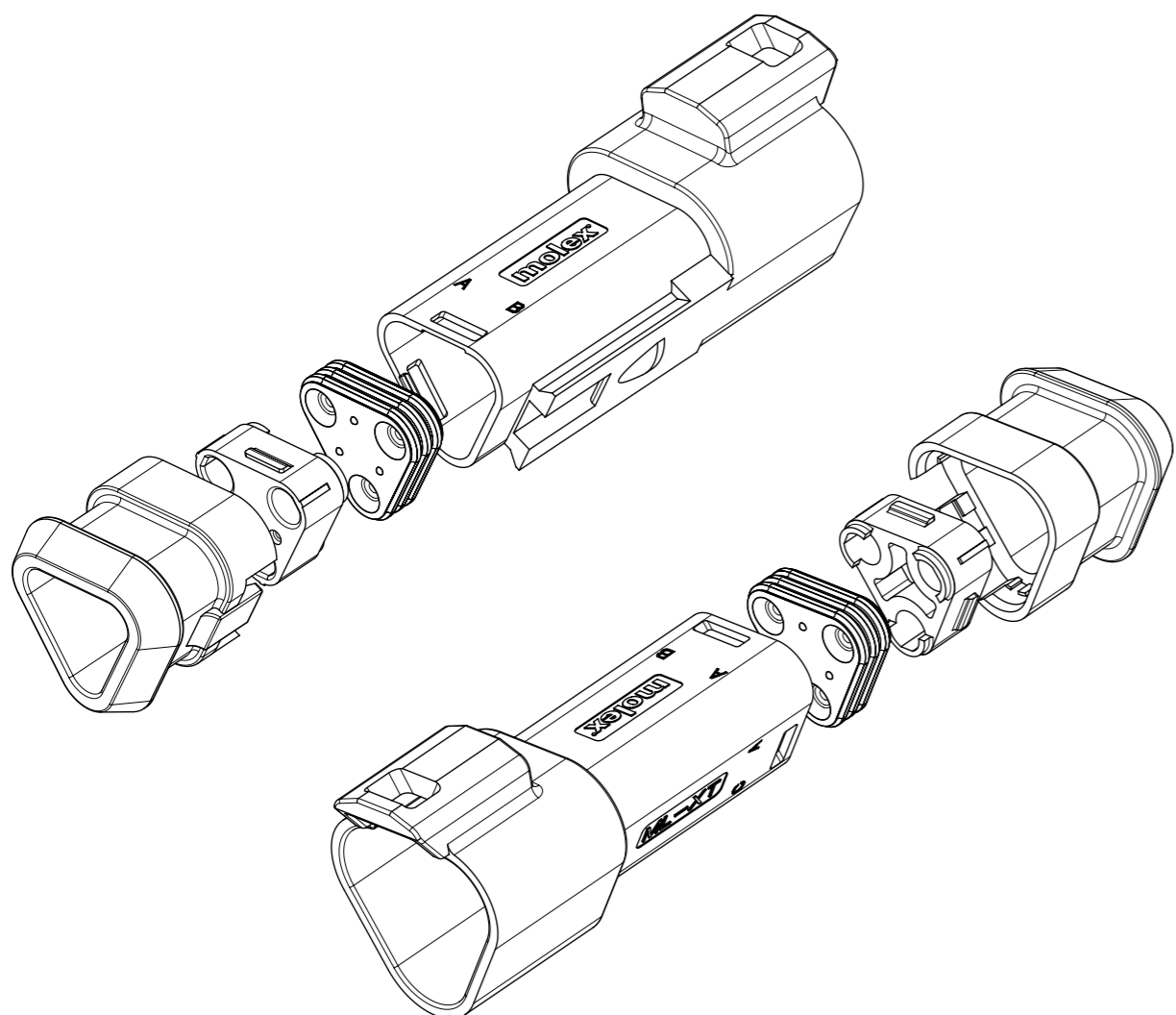
3CCT RECEPTACLE CONNECTOR WITH HEATSHRINK HOUSING ULTRASONICALLY WELDED IN PLACE



PENDING APPROVAL

SYMBOLS		THIS DRAWING CONTAINS INFORMATION THAT IS PROPRIETARY TO MOLEX ELECTRONIC TECHNOLOGIES, LLC AND SHOULD NOT BE USED WITHOUT WRITTEN PERMISSION		CURRENT REV DESC: SEE LONG TEXT		molex	
▽ = 0	mm	SCALE			3CCT ML-XT CV CONNECTOR		
▽ = 0	GENERAL TOLERANCES (UNLESS SPECIFIED)		EC NO: 615165		2019/08/16		PRODUCT CUSTOMER DRAWING
▽ = 0	ANGULAR TOL ± 2.0°		DRWN: MQINN		2019/08/23		
▽ = 0	4 PLACES ±		CHK'D: JFLETCHER		2015/01/22		DOCUMENT NUMBER
▽ = 0	3 PLACES ±		APPR:		934430020		
▽ = 0	2 PLACES ± 0.1		INITIAL REVISION:		DOC TYPE		DOC PART
▽ = 0	1 PLACE ± 0.2		DRWN: JFLETCHER		PSD		
▽ = 0	0 PLACES ±		APPR: JDWALLACE		000		REVISION
▽ = 0	DRAFT WHERE APPLICABLE MUST REMAIN WITHIN DIMENSIONS		THIRD ANGLE PROJECTION		D2		
▽ = 0			DRAWING		SERIES		MATERIAL NUMBER
▽ = 0			A3-SIZE		93443		
				CUSTOMER		SHEET NUMBER	
				SEE CHART		GENERAL MARKET	
						2 OF 7	

9	8	7	6	5	4	3	2	1
---	---	---	---	---	---	---	---	---



3CCT RECEPTACLE CONNECTOR

93444

2

-

--

SERIES No.

CIRCUIT SIZE
2 = 3CCT

ASSEMBLY OPTIONS:

- 1 = RECEP ASSEMBLY FOR WIRE JACKET RANGE: \varnothing 1.20mm-3.05mm (NOTE 2)
- 2 = RECEP ASSEMBLY FOR WIRE JACKET RANGE: \varnothing 2.23mm-3.68mm (NOTE 2)
- 5 = RECEP ASSEMBLY & HEATSHRINK FOR WIRE JACKET RANGE: \varnothing 1.20mm-3.05mm (NOTE 3)
- 6 = RECEP ASSEMBLY & HEATSHRINK FOR WIRE JACKET RANGE: \varnothing 2.23mm-3.68mm (NOTE 3)

COLOUR

- 01=BLACK
- 02=GREY
- 03=GREEN
- 04=BLUE
- 05=YELLOW
- 06 = WHITE
- 07 = BROWN
- 08 = ORANGE
- 09 = RED

EXAMPLE:

3cct RECEP BLACK WITH LARGE SEAL AND HEATSHRINK = 93444-2601

PENDING APPROVAL

NOTES

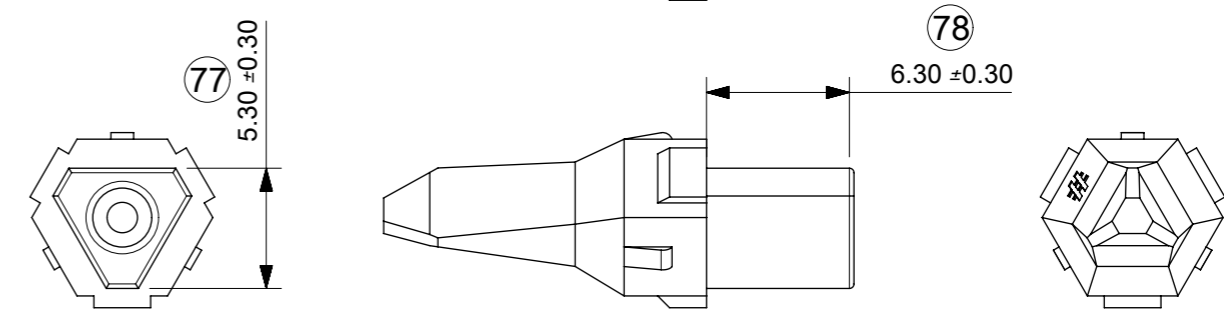
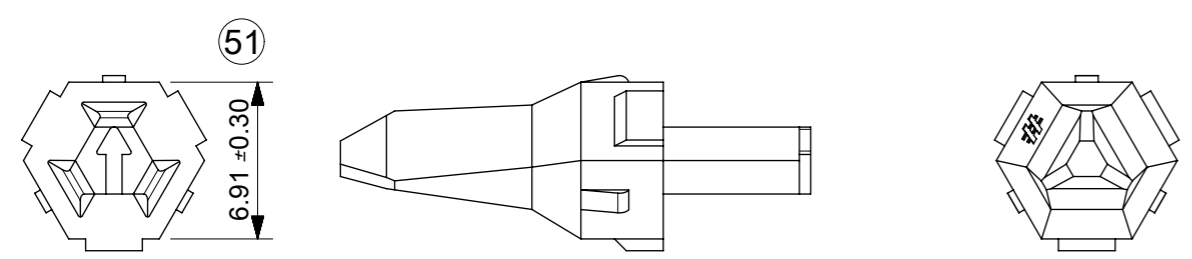
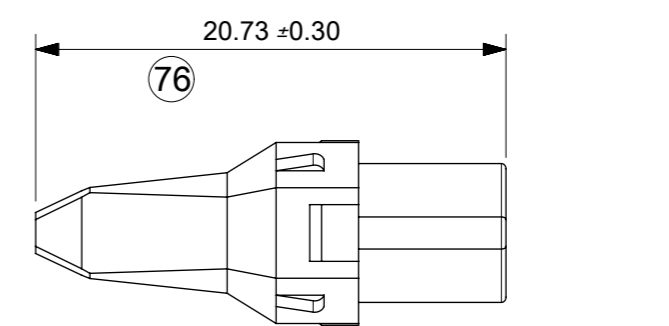
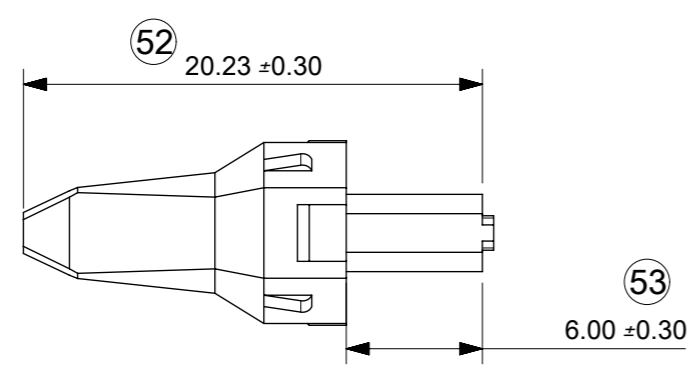
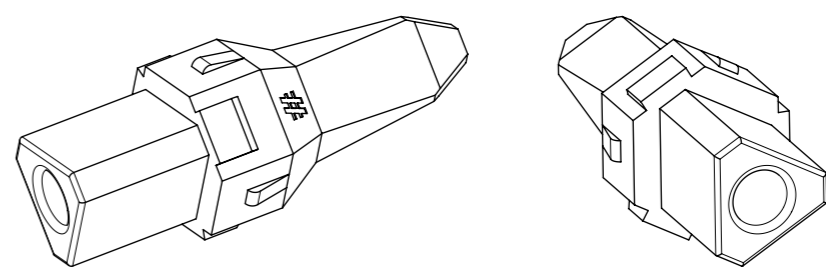
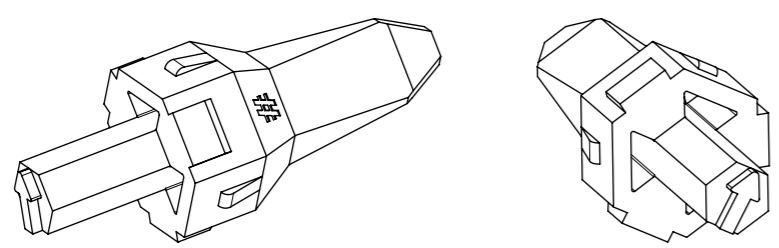
1. SEE SHEET 2 FOR UNSPECIFIED NOTES AND DIMENSIONS
2. BACK COVER HOUSING COLOUR BLACK
3. HEATSHRINK HOUSING COLOUR BLACK

SYMBOLS		THIS DRAWING CONTAINS INFORMATION THAT IS PROPRIETARY TO MOLEX ELECTRONIC TECHNOLOGIES, LLC AND SHOULD NOT BE USED WITHOUT WRITTEN PERMISSION		CURRENT REV DESC: SEE LONG TEXT		molex			
▽ = 0	mm	DIMENSION UNITS	SCALE						3CCT ML-XT CV CONNECTOR
▽ = 0	GENERAL TOLERANCES (UNLESS SPECIFIED)			EC NO: 615165			PRODUCT CUSTOMER DRAWING		
▽ = 0	ANGULAR TOL ± 2.0°			DRWN: MQUINN 2019/08/16			DOCUMENT NUMBER		
▽ = 0	4 PLACES ±			CHK'D: JFLETCHER 2019/08/23			934430020		
▽ = 0	3 PLACES ±			APPR:			DOC TYPE DOC PART REVISION		
▽ = 0	2 PLACES ± 0.1			INITIAL REVISION:			PSD 000 D2		
▽ = 0	1 PLACE ± 0.2			DRWN: JFLETCHER 2014/12/12			MATERIAL NUMBER		
▽ = 0	0 PLACES ±			APPR: JDWALLACE 2015/01/22			CUSTOMER		
▽ = 0	DRAFT WHERE APPLICABLE MUST REMAIN WITHIN DIMENSIONS			THIRD ANGLE PROJECTION		DRAWING		SHEET NUMBER	
▽ = 0			A3-SIZE		SERIES		GENERAL MARKET		3 OF 7

DOCUMENT STATUS	RQ	RELEASE DATE	
-----------------	----	--------------	--

RECEPTACLE WEDGELOCK STANDARD

RECEPTACLE WEDGELOCK J1939



NOTES
 1. MATERIAL
 HOUSING: NYLON 30% GLASS FILLED
 COLOUR: GREEN
 2. PART NUMBER 934472003
 KEYING : STANDARD
 INSPECTION NUMBERS 51-75
 LAST INSPECTION NUMBER 53

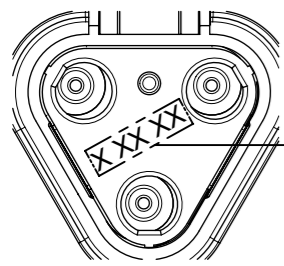
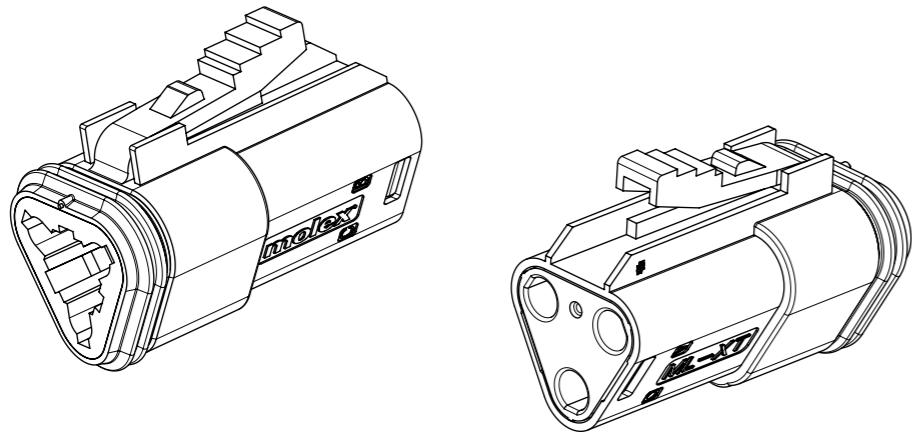
NOTES
 1. MATERIAL
 HOUSING: NYLON 30% GLASS FILLED
 COLOUR: BLUE
 2. PART NUMBER 934472004
 KEYING: J1939
 INSPECTION NUMBERS 76-100
 LAST INSPECTION NUMBER 79

PENDING APPROVAL

THIS DRAWING CONTAINS INFORMATION THAT IS PROPRIETARY TO MOLEX ELECTRONIC TECHNOLOGIES, LLC AND SHOULD NOT BE USED WITHOUT WRITTEN PERMISSION									
SYMBOLS		DIMENSION UNITS		SCALE		CURRENT REV DESC: SEE LONG TEXT			
▽ = 0	mm					molex			
▽ = 0	GENERAL TOLERANCES (UNLESS SPECIFIED)								
▽ = 0	ANGULAR TOL ± 2.0°					3CCT ML-XT CV CONNECTOR			
▽ = 0	4 PLACES ±					PRODUCT CUSTOMER DRAWING			
▽ = 0	3 PLACES ±					DOCUMENT NUMBER			
▽ = 0	2 PLACES ± 0.1					934430020			
▽ = 0	1 PLACE ± 0.2					DOC TYPE			
▽ = 0	0 PLACES ±					PSD			
□ = 0	DRAFT WHERE APPLICABLE MUST REMAIN WITHIN DIMENSIONS	THIRD ANGLE PROJECTION		DRAWING		SERIES		SHEET NUMBER	
▽ = 0		A3-SIZE		93443		GENERAL MARKET		4 OF 7	

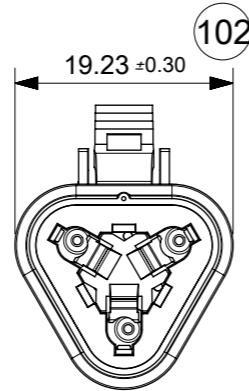
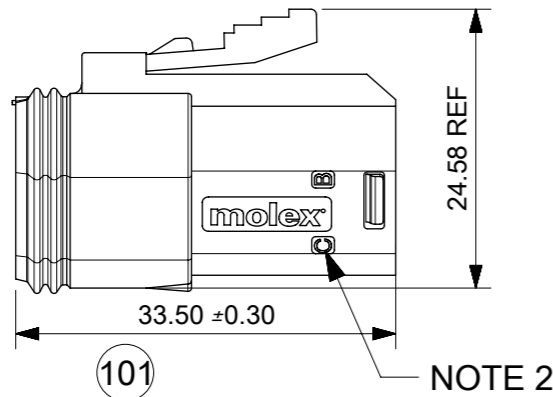
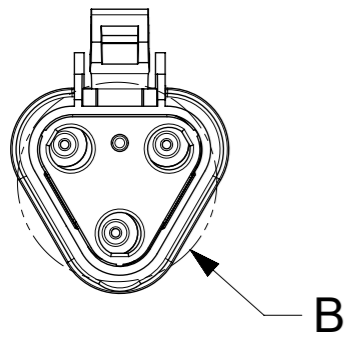
DOCUMENT STATUS	RQ	RELEASE DATE
-----------------	----	--------------

3CCT PLUG CONNECTOR



DETAIL B
SCALE 2:1

DATE CODE: X XX XX
 X — DAY: 1-7
 X — WEEK: 01 - 52
 X — YEAR: 00 - 99
 # — MACHINE NO. 1
 EXAMPLE: 11315 = DAY 1, WEEK 13, YEAR 15
 i.e. 23rd OF MARCH 2015

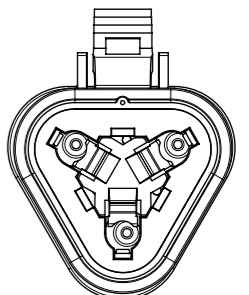
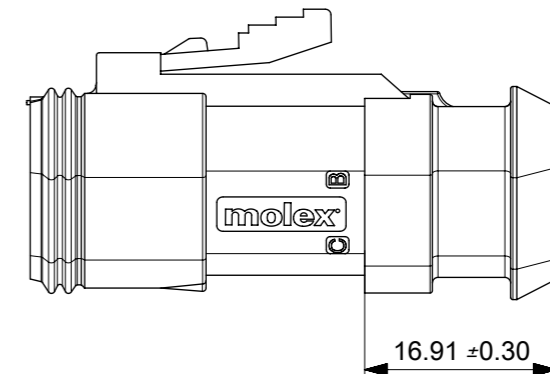
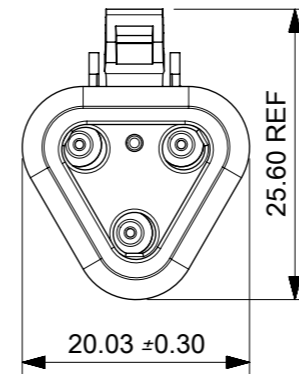
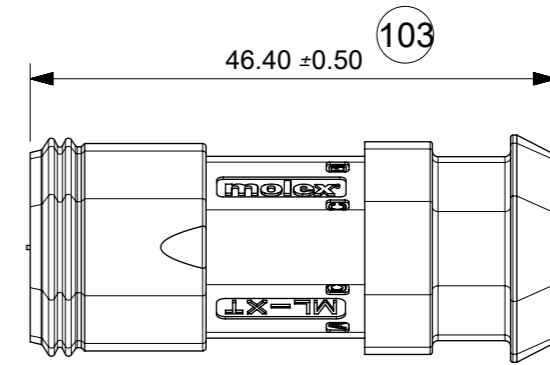
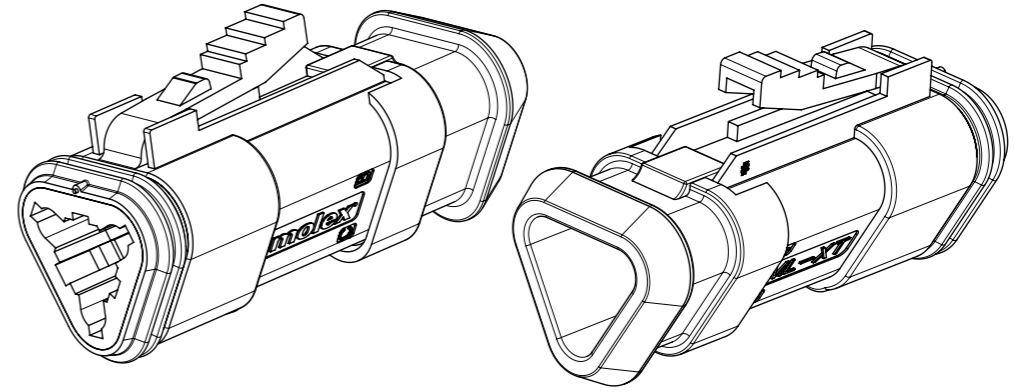


NOTES

- MATERIAL:
 HOUSING: NYLON 30% GLASS FILLED
 PLUG SEAL: SILICONE RUBBER
 BACK SEAL: HIGH CONSISTENCY RUBBER
- CIRCUIT IDENTIFICATION
- JACKET RANGE LARGE = \varnothing 2.23MM TO 3.68MM (SEAL COLOUR: LIGHT BLUE)
 JACKET RANGE SMALL = \varnothing 1.20MM TO 3.05MM (SEAL COLOUR: BURNT ORANGE)
- SEE SHEET 6 FOR FINAL PART NUMBER DESIGNATION

INSPECTION NUMBERS 101-150 RESERVED FOR SHEET 5
 LAST INSPECTION NUMBER 105

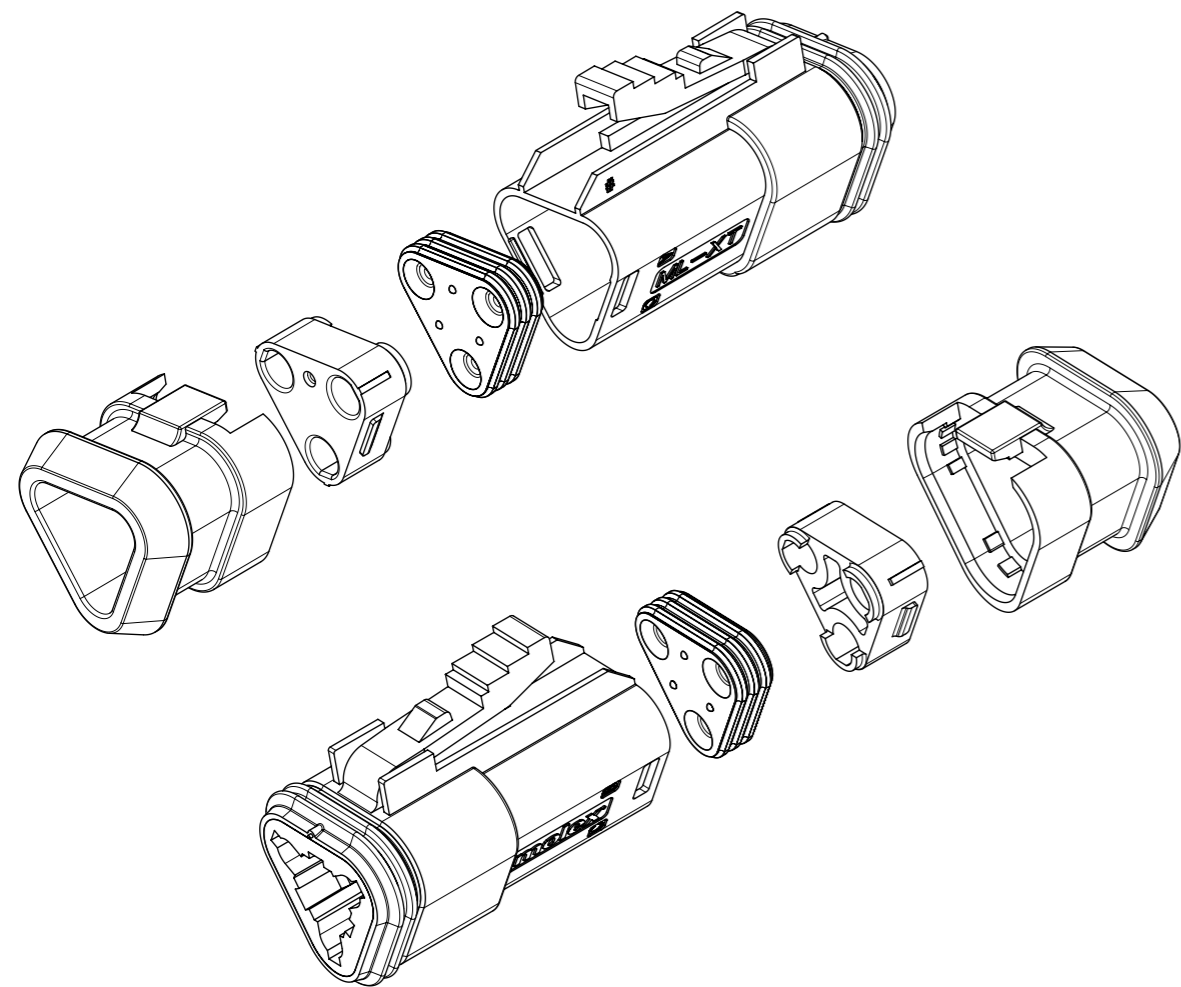
3CCT PLUG CONNECTOR WITH HEATSHRINK
 HOUSING ULTRA SONICALLY WELDED IN PLACE



PENDING APPROVAL

DOCUMENT STATUS	RQ	RELEASE DATE	
-----------------	----	--------------	--

SYMBOLS		THIS DRAWING CONTAINS INFORMATION THAT IS PROPRIETARY TO MOLEX ELECTRONIC TECHNOLOGIES, LLC AND SHOULD NOT BE USED WITHOUT WRITTEN PERMISSION	
▽ = 0	mm	CURRENT REV DESC: SEE LONG TEXT	
▽ = 0	GENERAL TOLERANCES (UNLESS SPECIFIED)	EC NO: 615165 DRWN: MQUINN 2019/08/16 CHK'D: JFLETCHER 2019/08/23 APPR:	
▽ = 0	ANGULAR TOL ± 2.0°		
▽ = 0	4 PLACES ±	INITIAL REVISION: DRWN: JFLETCHER 2014/12/12 APPR: JDWALLACE 2015/01/22	
▽ = 0	3 PLACES ±		
▽ = 0	2 PLACES ± 0.1	DOCUMENT NUMBER 934430020	
▽ = 0	1 PLACE ± 0.2		
▽ = 0	0 PLACES ±	DOC TYPE DOC PART REVISION PSD 000 D2	
■ = 0	DRAFT WHERE APPLICABLE MUST REMAIN WITHIN DIMENSIONS	THIRD ANGLE PROJECTION	DRAWING
▽ = 0		A3-SIZE	SERIES
		93443	MATERIAL NUMBER
		SEE CHART	CUSTOMER
		GENERAL MARKET	SHEET NUMBER
			5 OF 7



3CCT PLUG CONNECTOR

93445

2

-

--

SERIES No. _____

CIRCUIT SIZE
2 = 3CCT

ASSEMBLY OPTIONS:

- 1 = PLUG ASSEMBLY FOR WIRE JACKET RANGE: \varnothing 1.20mm-3.05mm (NOTE 2)
- 2 = PLUG ASSEMBLY FOR WIRE JACKET RANGE: \varnothing 2.23mm-3.68mm (NOTE 2)
- 5 = PLUG ASSEMBLY & HEATSHRINK FOR WIRE JACKET RANGE: \varnothing 1.20mm-3.05mm (NOTE 3)
- 6 = PLUG ASSEMBLY & HEATSHRINK FOR WIRE JACKET RANGE: \varnothing 2.23mm-3.68mm (NOTE 3)

COLOUR

- 01=BLACK
- 02=GREY
- 03=GREEN
- 04=BLUE
- 05=YELLOW
- 06 = WHITE
- 07 = BROWN
- 08 = ORANGE
- 09 = RED

EXAMPLE:

3cct PLUG BLACK WITH LARGE SEAL AND HEATSHRINK = 93444-2601

PENDING APPROVAL

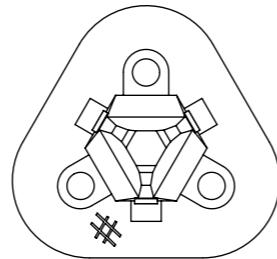
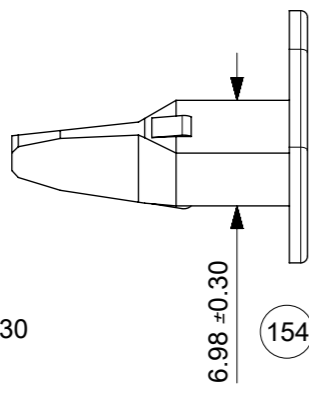
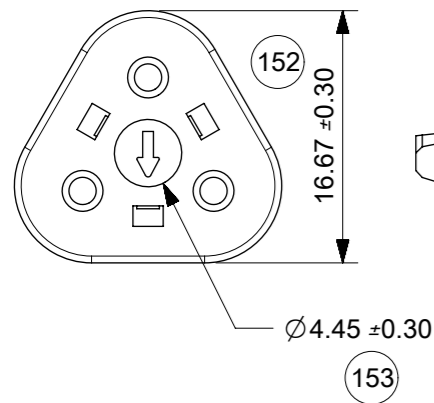
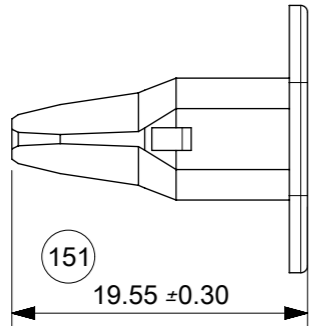
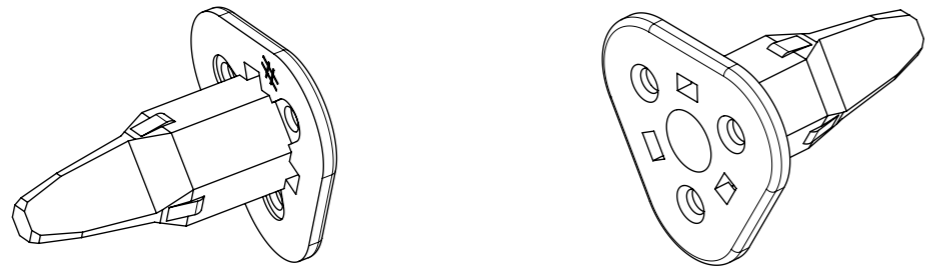
NOTES

1. SEE SHEET 5 FOR UNSPECIFIED NOTES AND DIMENSIONS
2. BACK COVER HOUSING COLOUR BLACK
3. HEATSHRINK HOUSING COLOUR BLACK

THIS DRAWING CONTAINS INFORMATION THAT IS PROPRIETARY TO MOLEX ELECTRONIC TECHNOLOGIES, LLC AND SHOULD NOT BE USED WITHOUT WRITTEN PERMISSION											
SYMBOLS		DIMENSION UNITS		SCALE		CURRENT REV DESC: SEE LONG TEXT					
▽ = 0		mm									
▽ = 0		GENERAL TOLERANCES (UNLESS SPECIFIED)				EC NO: 615165			3CCT ML-XT CV CONNECTOR PRODUCT CUSTOMER DRAWING		
▽ = 0		ANGULAR TOL		± 2.0°		DRWN: MQUINN 2019/08/16					
▽ = 0		4 PLACES		±		CHK'D: JFLETCHER 2019/08/23			DOCUMENT NUMBER: 934430020 DOC TYPE: PSD DOC PART: 000 REVISION: D2		
▽ = 0		3 PLACES		±		APPR:					
▽ = 0		2 PLACES		± 0.1		INITIAL REVISION:			MATERIAL NUMBER: SEE CHART CUSTOMER: GENERAL MARKET SHEET NUMBER: 6 OF 7		
▽ = 0		1 PLACE		± 0.2		DRWN: JFLETCHER 2014/12/12					
▽ = 0		0 PLACES		±		APPR: JDWALLACE 2015/01/22					
■ = 0		DRAFT WHERE APPLICABLE MUST REMAIN WITHIN DIMENSIONS		THIRD ANGLE PROJECTION		DRAWING: A3-SIZE		SERIES: 93443			
▽ = 0											

DOCUMENT STATUS	RQ	RELEASE DATE	
-----------------	----	--------------	--

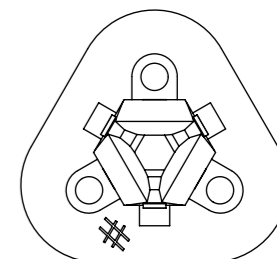
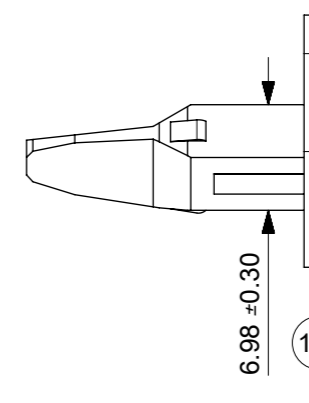
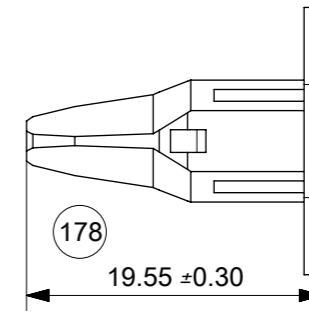
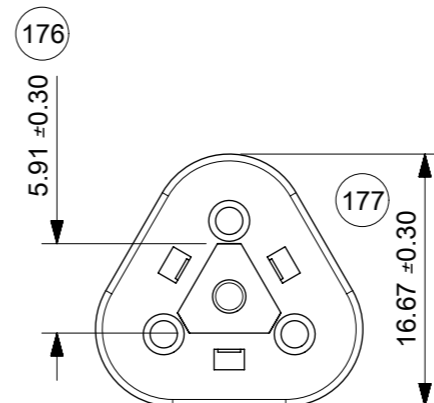
9 8 7 6 5 4 3 2 1
PLUG WEDGELOCK STANDARD



- NOTES**
 1. MATERIAL: SEE TABLE
 2. PART NUMBER 934482003
 KEYING : STANDARD
 INSPECTION NUMBERS 151-175
 LAST INSPECTION NUMBER 154

PART NUMBER	DESCRIPTION	MATERIAL
934482003	3CCT WEDGELOCK PLUG NO KEY GREEN	NYLON 30% GF COLOUR: GREEN
934482008	3CCT WEDGELOCK PLUG NO KEY ORANGE	NYLON 30% GF COLOUR: ORANGE

9 8 7 6 5 4 3 2 1
PLUG WEDGELOCK J1939



- NOTES**
 1. MATERIAL
 HOUSING: NYLON 30% GLASS FILLED
 COLOUR: BLUE
 2. PART NUMBER 934482004
 KEYING : J1939
 INSPECTION NUMBERS 176-200
 LAST INSPECTION NUMBER 179

PENDING APPROVAL

SYMBOLS		THIS DRAWING CONTAINS INFORMATION THAT IS PROPRIETARY TO MOLEX ELECTRONIC TECHNOLOGIES, LLC AND SHOULD NOT BE USED WITHOUT WRITTEN PERMISSION		CURRENT REV DESC: SEE LONG TEXT		molex	
▽ = 0	mm	SCALE	EC NO: 615165		3CCT ML-XT CV CONNECTOR		
▽ = 0	GENERAL TOLERANCES (UNLESS SPECIFIED)		DRWN: MQUINN 2019/08/16		PRODUCT CUSTOMER DRAWING		DOCUMENT NUMBER 934430020
▽ = 0	ANGULAR TOL ± 2.0°		CHK'D: JFLETCHER 2019/08/23		DOC TYPE DOC PART REVISION PSD 000 D2		
▽ = 0	4 PLACES ±		APPR:		INITIAL REVISION:		MATERIAL NUMBER SEE CHART
▽ = 0	3 PLACES ±		DRWN: JFLETCHER 2014/12/12		SERIES 93443		
▽ = 0	2 PLACES ± 0.1		APPR: JDWALLACE 2015/01/22		CUSTOMER GENERAL MARKET		SHEET NUMBER 7 OF 7
▽ = 0	1 PLACE ± 0.2		THIRD ANGLE PROJECTION		DRAWING A3-SIZE		
▽ = 0	0 PLACES ±		DRAFT WHERE APPLICABLE MUST REMAIN WITHIN DIMENSIONS		DRAWING A3-SIZE		

DOCUMENT STATUS	RQ	RELEASE DATE	
-----------------	----	--------------	--