

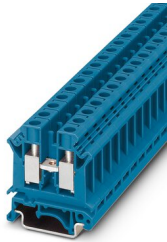
Feed-through terminal block - UK 10 N BU



3005086

<https://www.phoenixcontact.com/us/products/3005086>

Please be informed that the data shown in this PDF document is generated from our Online Catalog. Please find the complete data in the user documentation. Our General Terms of Use for Downloads are valid.



Feed-through terminal block, nom. voltage: 800 V, nominal current: 57 A, connection method: Screw connection, Rated cross section: 10 mm², cross section: 0.5 mm² - 16 mm², mounting type: NS 35/7,5, NS 35/15, NS 32, color: blue

勝特力電材超市-龍山店 886-3-5773766
勝特力電材超市-光復店 886-3-5729570
勝特力電子(上海) 86-21-34970699
勝特力電子(深圳) 86-755-83298787
<http://www.100y.com.tw>

Your advantages

- All universal terminal blocks in the UK... series can also be used in the Ex e area according to IEC/EN 60079 as standard
- The corresponding EC-type examination numbers for Ex approval can be found in the technical connection data

Commercial Data

Item number	3005086
Packing unit	1 pc
Minimum order quantity	1 pc
Sales Key	B01
Product Key	BE1211
Catalog Page	Page 461 (C-1-2019)
GTIN	4017918091026
Weight per Piece (including packing)	17.006 g
Weight per Piece (excluding packing)	17.006 g
Customs tariff number	85369010
Country of origin	CN

Feed-through terminal block - UK 10 N BU



3005086

<https://www.phoenixcontact.com/us/products/3005086>

Technical Data

Product properties

Product type	Feed-through terminal block
Number of connections	2
Number of rows	1
Potentials	1

Insulation characteristics

Overvoltage category	III
Degree of pollution	3

Electrical properties

Rated surge voltage	8 kV
Maximum power dissipation for nominal condition	1.82 W

Connection data

Number of connections per level	2
Nominal cross section	10 mm ²

Level 1 above 1 below 1

Screw thread	M4
Tightening torque	1.5 ... 1.8 Nm
Stripping length	10 mm
Internal cylindrical gage	B6
Conductor cross section solid	0.5 mm ² ... 16 mm ²
Cross section AWG	20 ... 6
Conductor cross section flexible	0.5 mm ² ... 10 mm ²
Conductor cross section, flexible [AWG]	20 ... 8
Flexible conductor cross section flexible (ferrule, w/o plastic sleeve)	0.5 mm ² ... 10 mm ²
Flexible conductor cross section (ferrule with plastic sleeve)	0.5 mm ² ... 6 mm ²
Cross-section with insertion bridge, rigid	10 mm ²
Cross-section with insertion bridge, flexible	10 mm ²
2 conductors with same cross section, solid	0.5 mm ² ... 4 mm ²
2 conductors with same cross section, flexible	0.5 mm ² ... 4 mm ²
2 conductors with same cross section, flexible, with ferrule without plastic sleeve	0.5 mm ² ... 2.5 mm ²
2 conductors with the same cross section, flexible, with TWIN ferrule with plastic sleeve	0.5 mm ² ... 6 mm ²
Nominal current	57 A
Maximum load current	76 A (with 16 mm ² conductor cross section)
Nominal voltage	800 V
Nominal cross section	10 mm ²

Feed-through terminal block - UK 10 N BU



3005086

<https://www.phoenixcontact.com/us/products/3005086>

Ex data

Rated data (ATEX/IECEX)

ATEX certificate	KEMA 98 ATEX 1786 U
IEC Ex certificate	IECEX KEM 06.0029 U
Identification	□ II 2 GD Ex eb IIC Gb
Operating temperature range	-60 °C ... 110 °C
Ex-certified accessories	3003020 D-UK 4/10 3006027 D-UK 16 3004210 ATP-UK 5-MTK 1205066 SZS 1,0X4,0 VDE 1201442 E/UK
Bridge data	51.5 A / 10 mm ² 50 A / 10 mm ²
Ex temperature increase	40 K (59.1 A / 10 mm ²)
Rated voltage	690 V
at bridging with insertion bridge	690 V
for bridging with bridge	690 V
Rated insulation voltage	630 V

Ex level General

Rated current	53.5 A
Maximum load current	67 A
Contact resistance	0.12 mΩ

Ex connection data General

Torque range	1.5 Nm ... 1.8 Nm
Nominal cross section	10 mm ²
Rated cross section AWG	8
Connection capacity rigid	0.5 mm ² ... 16 mm ²
Connection capacity AWG	20 ... 6
Connection capacity flexible	0.5 mm ² ... 10 mm ²
Connection capacity AWG	20 ... 8
2 conductors with same cross section, solid	0.5 mm ² ... 4 mm ²
2 conductors with the same cross-section AWG rigid	20 ... 12
2 conductors with same cross section, stranded	0.5 mm ² ... 4 mm ²
2 conductors with the same cross-section AWG flexible	20 ... 12

Dimensions

Width	10.2 mm
End cover width	1.8 mm
Height NS 35/15	54.8 mm
Height NS 35/7,5	47.3 mm
Height	1.85 "
Height NS 32	52.3 mm

Feed-through terminal block - UK 10 N BU



3005086

<https://www.phoenixcontact.com/us/products/3005086>

Length	42.5 mm
--------	---------

Material specifications

Color	blue
Flammability rating according to UL 94	V0
Insulating material group	I
Insulating material	PA
Static insulating material application in cold	-60 °C
Temperature index of insulation material (DIN EN 60216-1 (VDE 0304-21))	130 °C
Relative insulation material temperature index (Elec., UL 746 B)	130 °C
Fire protection for rail vehicles (DIN EN 45545-2) R22	HL 1 - HL 3
Fire protection for rail vehicles (DIN EN 45545-2) R23	HL 1 - HL 3
Fire protection for rail vehicles (DIN EN 45545-2) R24	HL 1 - HL 3
Fire protection for rail vehicles (DIN EN 45545-2) R26	HL 1 - HL 3
Calorimetric heat release NFPA 130 (ASTM E 1354)	28 MJ/kg
Surface flammability NFPA 130 (ASTM E 162)	passed
Specific optical density of smoke NFPA 130 (ASTM E 662)	passed
Smoke gas toxicity NFPA 130 (SMP 800C)	passed

Electrical tests

Surge voltage test

Test voltage setpoint	9.8 kV
Result	Test passed

Temperature-rise test

Requirement temperature-rise test	Increase in temperature \leq 45 K
Result	Test passed
Short-time withstand current 10 mm ²	1.2 kA
Short-time withstand current 16 mm ²	1.92 kA
Result	Test passed

Power-frequency withstand voltage

Test voltage setpoint	2 kV
Result	Test passed

Mechanical properties

Mechanical data

Open side panel	Yes
-----------------	-----

Mechanical tests

Mechanical strength

Result	Test passed
--------	-------------

Attachment on the carrier

Feed-through terminal block - UK 10 N BU



3005086

<https://www.phoenixcontact.com/us/products/3005086>

DIN rail/fixing support	NS 32/NS 35
Test force setpoint	5 N
Result	Test passed

Test for conductor damage and slackening

Rotation speed	10 rpm
Revolutions	135
Conductor cross section/weight	0.5 mm ² / 0.3 kg
	10 mm ² / 2 kg
	16 mm ² / 2.9 kg
Result	Test passed

Environmental and real-life conditions

Needle-flame test

Time of exposure	30 s
Result	Test passed

Ambient conditions

Ambient temperature (operation)	-60 °C ... 105 °C (max. short-term operating temperature RTI Elec.)
Ambient temperature (storage/transport)	-25 °C ... 60 °C (for a short time, not exceeding 24 h, -60 °C to +70 °C)
Ambient temperature (assembly)	-5 °C ... 70 °C
Ambient temperature (actuation)	-5 °C ... 70 °C
Permissible humidity (storage/transport)	30 % ... 70 %

Standards and regulations

Connection in acc. with standard	IEC 60947-7-1
----------------------------------	---------------

Mounting

Mounting type	NS 35/7,5
	NS 35/15
	NS 32

Feed-through terminal block - UK 10 N BU

3005086

<https://www.phoenixcontact.com/us/products/3005086>



Drawings

Circuit diagram



Feed-through terminal block - UK 10 N BU



3005086

<https://www.phoenixcontact.com/us/products/3005086>

Approvals

DNV Approval ID: TAE00001CT				
	Nominal Voltage U_N	Nominal Current I_N	Cross Section AWG	Cross Section mm^2
			-	-

CSA Approval ID: 13631				
	Nominal Voltage U_N	Nominal Current I_N	Cross Section AWG	Cross Section mm^2
Use group B	600 V	65 A	24 - 6	-
Use group C	600 V	65 A	24 - 6	-

CB IECEE CB Scheme Approval ID: NL-39959				
	Nominal Voltage U_N	Nominal Current I_N	Cross Section AWG	Cross Section mm^2
	800 V	57 A	-	- 10

cULus Recognized Approval ID: E60425				
	Nominal Voltage U_N	Nominal Current I_N	Cross Section AWG	Cross Section mm^2
Use group B	600 V	65 A	24 - 6	-
Use group C	600 V	65 A	24 - 6	-
Use group F	800 V	65 A	24 - 6	-

CCA Approval ID: NTR-NL 3071				
	Nominal Voltage U_N	Nominal Current I_N	Cross Section AWG	Cross Section mm^2
	800 V		-	- 10

RS Approval ID: 17.00013.272				
---------------------------------	--	--	--	--

KEMA-KEUR Approval ID: 71-119849				
-------------------------------------	--	--	--	--

Feed-through terminal block - UK 10 N BU



3005086

<https://www.phoenixcontact.com/us/products/3005086>

	Nominal Voltage U_N	Nominal Current I_N	Cross Section AWG	Cross Section mm^2
	800 V	57 A	-	- 10



ATEX

Approval ID: KEMA98ATEX1786U



cUL Recognized

Approval ID: E192998

	Nominal Voltage U_N	Nominal Current I_N	Cross Section AWG	Cross Section mm^2
	600 V	65 A	24 - 6	-



EAC Ex

Approval ID: RU C-DE.HA91.B.00066



GL

Approval ID: 98876-96 HH

	Nominal Voltage U_N	Nominal Current I_N	Cross Section AWG	Cross Section mm^2
EEx e II part certificate	690 V	57 A	-	- 10



IECEx

Approval ID: IECEx KEM 06.0029U



UL Recognized

Approval ID: E192998

	Nominal Voltage U_N	Nominal Current I_N	Cross Section AWG	Cross Section mm^2
	600 V	65 A	24 - 6	-



CCC

Approval ID: 2020322313000623



NEPSI

Approval ID: GYJ20.1195U



DNV GL-EX

Approval ID: TAE00003K6

	Nominal Voltage U_N	Nominal Current I_N	Cross Section AWG	Cross Section mm^2
EEx e II part certificate	440 V	32 A	-	- 2.5

Feed-through terminal block - UK 10 N BU

3005086

<https://www.phoenixcontact.com/us/products/3005086>



cULus Recognized

Feed-through terminal block - UK 10 N BU



3005086

<https://www.phoenixcontact.com/us/products/3005086>

Classifications

ECLASS

ECLASS-9.0	27141120
ECLASS-10.0.1	27141120
ECLASS-11.0	27141120

ETIM

ETIM 8.0	EC000897
----------	----------

UNSPSC

UNSPSC 21.0	39121400
-------------	----------

Feed-through terminal block - UK 10 N BU



3005086

<https://www.phoenixcontact.com/us/products/3005086>

Environmental Product Compliance

China RoHS	Environmentally friendly use period: unlimited = EFUP-e No hazardous substances above threshold values
------------	---

Feed-through terminal block - UK 10 N BU

3005086

<https://www.phoenixcontact.com/us/products/3005086>

Accessories



Note: Applying some accessories below might limit this product.

Chain bridge

Chain bridge - KB- 10 - 0203205

<https://www.phoenixcontact.com/us/products/0203205>



Chain bridge, pitch: 10 mm, color: silver

Fixed bridge

Fixed bridge - FBI 2-10 - 0203483

<https://www.phoenixcontact.com/us/products/0203483>



Fixed bridge, pitch: 10 mm, color: silver

Feed-through terminal block - UK 10 N BU

3005086

<https://www.phoenixcontact.com/us/products/3005086>

Fixed bridge

Fixed bridge - FBI 10-10 - 0203276

<https://www.phoenixcontact.com/us/products/0203276>

Fixed bridge, pitch: 10 mm, color: silver



 Max. current carrying capacity: 76 A

Fixed bridge

Fixed bridge - FB 10-10-EX - 0203247

<https://www.phoenixcontact.com/us/products/0203247>

Fixed bridge, pitch: 10 mm, color: silver



Feed-through terminal block - UK 10 N BU

3005086

<https://www.phoenixcontact.com/us/products/3005086>

Fixed bridge

Fixed bridge - FB 4-10 - 0203182

<https://www.phoenixcontact.com/us/products/0203182>



Fixed bridge, color: silver

Fixed bridge

Fixed bridge - FB 10-10 - 0203179

<https://www.phoenixcontact.com/us/products/0203179>



Fixed bridge, pitch: 10 mm, color: silver

Feed-through terminal block - UK 10 N BU

3005086

<https://www.phoenixcontact.com/us/products/3005086>



Fixed bridge

Fixed bridge - FB 3-10 - 0203140

<https://www.phoenixcontact.com/us/products/0203140>



Fixed bridge, pitch: 10 mm, color: silver

Insertion bridge

Insertion bridge - EB 2-10 - 0203153

<https://www.phoenixcontact.com/us/products/0203153>



Insertion bridge, pitch: 10 mm, color: gray

 Max. current carrying capacity: 70 A

Feed-through terminal block - UK 10 N BU

3005086

<https://www.phoenixcontact.com/us/products/3005086>



Insertion bridge

Insertion bridge - EB 3-10 - 0203328

<https://www.phoenixcontact.com/us/products/0203328>

Insertion bridge, pitch: 10 mm, color: gray



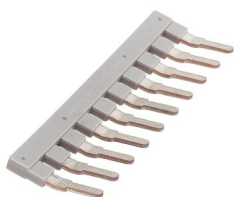
 Max. current carrying capacity: 70 A

Insertion bridge

Insertion bridge - EB 10-10 - 0203137

<https://www.phoenixcontact.com/us/products/0203137>

Insertion bridge, pitch: 10 mm, color: gray



 Max. current carrying capacity: 70 A

Feed-through terminal block - UK 10 N BU



3005086

<https://www.phoenixcontact.com/us/products/3005086>

Switching jumper

Switching jumper - SB 2- 8/13 N - 0200062

<https://www.phoenixcontact.com/us/products/0200062>



Switching jumper, pitch: 13 mm, color: silver

End cover

End cover - D-UK 4/10 - 3003020

<https://www.phoenixcontact.com/us/products/3003020>



End cover, length: 42.5 mm, width: 1.8 mm, height: 35.9 mm, color: gray

Feed-through terminal block - UK 10 N BU

3005086

<https://www.phoenixcontact.com/us/products/3005086>

End cover

End cover - D-UK 4/10 BU - 3003101

<https://www.phoenixcontact.com/us/products/3003101>

End cover, length: 42.5 mm, width: 1.8 mm, height: 47 mm, color: blue



Warning label

Warning label - WS 5-10 - 1004429

<https://www.phoenixcontact.com/us/products/1004429>

Warning label, Plate, yellow/black, labeled: Lightning flash and warning in English, mounting type: plug in, for terminal block width: 10 mm, diameter: 0 mm



Feed-through terminal block - UK 10 N BU

3005086

<https://www.phoenixcontact.com/us/products/3005086>

Warning label

Warning label - WS 4-10 - 1004225

<https://www.phoenixcontact.com/us/products/1004225>

Warning label, Plate, yellow/black, labeled: Lightning flash and warning in English, mounting type: plug in, for terminal block width: 10 mm, diameter: 0 mm



Short-circuit connector

Short-circuit connector - KSS 10 - 0310541

<https://www.phoenixcontact.com/us/products/0310541>

Short-circuit connector, pitch: 10 mm, color: black



Feed-through terminal block - UK 10 N BU

3005086

<https://www.phoenixcontact.com/us/products/3005086>

Step bracket

Step bracket - STL 10N/5N - 0204110

<https://www.phoenixcontact.com/us/products/0204110>



Step bracket, pitch: 5 mm, color: silver

Separating plate

Separating plate - TS-K - 1302215

<https://www.phoenixcontact.com/us/products/1302215>



Separating plate, length: 22 mm, width: 0.5 mm, height: 22 mm, color: gray

Feed-through terminal block - UK 10 N BU

3005086

<https://www.phoenixcontact.com/us/products/3005086>

Partition plate

Partition plate - ATP-UK - 3003224

<https://www.phoenixcontact.com/us/products/3003224>



Partition plate, length: 56 mm, width: 1.5 mm, height: 45.7 mm, color: gray

Marker card

Marker card - SBS10:UNBEDRUCKT - 1007248

<https://www.phoenixcontact.com/us/products/1007248>



Marker card, Card, white, unlabeled, can be labeled with: Marker pen, perforated, mounting type: snapped, snap into flat marker groove, for terminal block width: 10 mm, lettering field size: 6 x 10.1 mm, Number of individual labels: 250

Feed-through terminal block - UK 10 N BU

3005086

<https://www.phoenixcontact.com/us/products/3005086>

Screwdriver

Screwdriver - SZS 1,0X4,0 VDE - 1205066

<https://www.phoenixcontact.com/us/products/1205066>



Screwdriver, slot-headed, VDE insulated, size: 1.0 x 4.0 x 100 mm, 2-component grip, with non-slip grip

Bridge bar isolator

Bridge bar isolator - IS-K 10 - 1303337

<https://www.phoenixcontact.com/us/products/1303337>



Bridge bar isolator, color: gray

Feed-through terminal block - UK 10 N BU

3005086

<https://www.phoenixcontact.com/us/products/3005086>

DIN rail perforated

DIN rail perforated - NS 32 PERF 2000MM-VPE 10 - 1201002

<https://www.phoenixcontact.com/us/products/1201002>



DIN rail perforated, acc. to EN 60715, material: Steel, galvanized, passivated with a thick layer, G profile, color: silver, Pack of 10 (20 m)

DIN rail, unperforated

DIN rail, unperforated - NS 32 UNPERF 2000MM-VPE 10 - 1201015

<https://www.phoenixcontact.com/us/products/1201015>



DIN rail, unperforated, acc. to EN 60715, material: Steel, galvanized, passivated with a thick layer, G profile, color: silver, Pack of 10 (20 m)

Feed-through terminal block - UK 10 N BU

3005086

<https://www.phoenixcontact.com/us/products/3005086>

DIN rail perforated

DIN rail perforated - NS 35/ 7,5 PERF 2000MM - 0801733

<https://www.phoenixcontact.com/us/products/0801733>



DIN rail perforated, acc. to EN 60715, material: Steel, galvanized, passivated with a thick layer, Standard profile, color: silver, Pack of 25 (50 m)

DIN rail, unperforated

DIN rail, unperforated - NS 35/ 7,5 UNPERF 2000MM - 0801681

<https://www.phoenixcontact.com/us/products/0801681>



DIN rail, unperforated, acc. to EN 60715, material: Steel, galvanized, passivated with a thick layer, Standard profile, color: silver, Pack of 25 (50 m)

Feed-through terminal block - UK 10 N BU

3005086

<https://www.phoenixcontact.com/us/products/3005086>

DIN rail perforated

DIN rail perforated - NS 35/ 7,5 WH PERF 2000MM - 1204119

<https://www.phoenixcontact.com/us/products/1204119>



DIN rail perforated, acc. to EN 60715, material: Steel, Galvanized, white passivated, Standard profile, color: silver, Pack of 25 (50 m)

DIN rail, unperforated

DIN rail, unperforated - NS 35/ 7,5 WH UNPERF 2000MM-VPE 10 - 1204122

<https://www.phoenixcontact.com/us/products/1204122>



DIN rail, unperforated, acc. to EN 60715, material: Steel, Galvanized, white passivated, Standard profile, color: silver, Pack of 10 (20 m)

Feed-through terminal block - UK 10 N BU

3005086

<https://www.phoenixcontact.com/us/products/3005086>

DIN rail, unperforated

DIN rail, unperforated - NS 35/ 7,5 AL UNPERF 2000MM - 0801704

<https://www.phoenixcontact.com/us/products/0801704>



DIN rail, unperforated, acc. to EN 60715, material: Aluminum, uncoated, Standard profile, color: silver, Pack of 25 (50 m)

DIN rail perforated

DIN rail perforated - NS 35/ 7,5 ZN PERF 2000MM - 1206421

<https://www.phoenixcontact.com/us/products/1206421>



DIN rail perforated, acc. to EN 60715, material: Steel, galvanized, Standard profile, color: silver, Pack of 25 (50 m)

Feed-through terminal block - UK 10 N BU

3005086

<https://www.phoenixcontact.com/us/products/3005086>

DIN rail, unperforated

DIN rail, unperforated - NS 35/ 7,5 ZN UNPERF 2000MM - 1206434

<https://www.phoenixcontact.com/us/products/1206434>



DIN rail, unperforated, acc. to EN 60715, material: Steel, galvanized, Standard profile, color: silver, Pack of 25 (50 m)

DIN rail, unperforated

DIN rail, unperforated - NS 35/ 7,5 CU UNPERF 2000MM-VPE 10 - 0801762

<https://www.phoenixcontact.com/us/products/0801762>



DIN rail, unperforated, acc. to EN 60715, material: Copper, uncoated, Standard profile, color: copper-colored, Pack of 10 (20 m)

Feed-through terminal block - UK 10 N BU

3005086

<https://www.phoenixcontact.com/us/products/3005086>



End cap

End cap - NS 35/ 7,5 CAP - 1206560

<https://www.phoenixcontact.com/us/products/1206560>

DIN rail end piece, for DIN rail NS 35/7.5



DIN rail perforated

DIN rail perforated - NS 35/15 PERF 2000MM - 1201730

<https://www.phoenixcontact.com/us/products/1201730>



DIN rail perforated, similar to EN 60715, material: Steel, galvanized, passivated with a thick layer, Standard profile, color: silver, Pack of 25 (50 m)

Feed-through terminal block - UK 10 N BU

3005086

<https://www.phoenixcontact.com/us/products/3005086>

DIN rail, unperforated

DIN rail, unperforated - NS 35/15 UNPERF 2000MM - 1201714

<https://www.phoenixcontact.com/us/products/1201714>



DIN rail, unperforated, similar to EN 60715, material: Steel, galvanized, passivated with a thick layer, Standard profile, color: silver, Pack of 25 (50 m)

DIN rail perforated

DIN rail perforated - NS 35/15 WH PERF 2000MM - 0806602

<https://www.phoenixcontact.com/us/products/0806602>



DIN rail perforated, similar to EN 60715, material: Steel, Galvanized, white passivated, Standard profile, color: white, Pack of 25 (50 m)

Feed-through terminal block - UK 10 N BU

3005086

<https://www.phoenixcontact.com/us/products/3005086>

DIN rail, unperforated

DIN rail, unperforated - NS 35/15 WH UNPERF 2000MM-VPE 10 - 1204135

<https://www.phoenixcontact.com/us/products/1204135>



DIN rail, unperforated, similar to EN 60715, material: Steel, Galvanized, white passivated, Standard profile, color: silver, Pack of 10 (20 m)

DIN rail, unperforated

DIN rail, unperforated - NS 35/15 AL UNPERF 2000MM - 1201756

<https://www.phoenixcontact.com/us/products/1201756>



DIN rail, unperforated, similar to EN 60715, material: Aluminum, uncoated, Standard profile, color: silver

Feed-through terminal block - UK 10 N BU

3005086

<https://www.phoenixcontact.com/us/products/3005086>

DIN rail perforated

DIN rail perforated - NS 35/15 ZN PERF 2000MM - 1206599

<https://www.phoenixcontact.com/us/products/1206599>



DIN rail perforated, similar to EN 60715, material: Steel, galvanized, Standard profile, color: silver, Pack of 25 (50 m)

DIN rail, unperforated

DIN rail, unperforated - NS 35/15 ZN UNPERF 2000MM - 1206586

<https://www.phoenixcontact.com/us/products/1206586>



DIN rail, unperforated, similar to EN 60715, material: Steel, galvanized, Standard profile, color: silver, Pack of 25 (50 m)

Feed-through terminal block - UK 10 N BU

3005086

<https://www.phoenixcontact.com/us/products/3005086>

DIN rail, unperforated

DIN rail, unperforated - NS 35/15 CU UNPERF 2000MM-VPE 10 - 1201895

<https://www.phoenixcontact.com/us/products/1201895>



DIN rail, unperforated, similar to EN 60715, material: Copper, uncoated, Standard profile, color: copper-colored, Pack of 10 (20 m)

End cap

End cap - NS 35/15 CAP - 1206573

<https://www.phoenixcontact.com/us/products/1206573>

DIN rail end piece, for DIN rail NS 35/15



Feed-through terminal block - UK 10 N BU

3005086

<https://www.phoenixcontact.com/us/products/3005086>

DIN rail, unperforated

DIN rail, unperforated - NS 35/15-2,3 UNPERF 2000MM-VPE 10 - 1201798

<https://www.phoenixcontact.com/us/products/1201798>

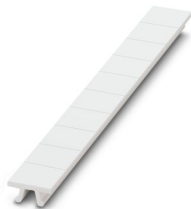


DIN rail, unperforated, acc. to EN 60715, material: Steel, galvanized, passivated with a thick layer, Standard profile 2.3 mm, color: silver, Pack of 10 (20 m)

Zack marker strip

Zack marker strip - ZB 10:UNBEDRUCKT - 1053001

<https://www.phoenixcontact.com/us/products/1053001>



Zack marker strip, Strip, white, unlabeled, can be labeled with: PLOTMARK, CMS-P1-PLOTTER, mounting type: snapped, for terminal block width: 10.2 mm, lettering field size: 10.5 mm x 10.15 mm, Number of individual labels: 10

Feed-through terminal block - UK 10 N BU

3005086

<https://www.phoenixcontact.com/us/products/3005086>

Zack marker strip

Zack marker strip - ZB 10 CUS - 0824941

<https://www.phoenixcontact.com/us/products/0824941>



Zack marker strip, can be ordered: Strip, white, labeled according to customer specifications, mounting type: snap into tall marker groove, for terminal block width: 10.2 mm, lettering field size: 10.15 x 10.5 mm, Number of individual labels: 10

Zack marker strip

Zack marker strip - ZB10,LGS:FORTL.ZAHLEN - 1053014

<https://www.phoenixcontact.com/us/products/1053014>



Zack marker strip, Strip, white, labeled, can be labeled with: CMS-P1-PLOTTER, printed horizontally: consecutive numbers 1 ... 10, 11 ... 20, etc. up to 91 ... 100, mounting type: snapped, for terminal block width: 10.2 mm, lettering field size: 10.15 x 10.5 mm, Number of individual labels: 10

Feed-through terminal block - UK 10 N BU

3005086

<https://www.phoenixcontact.com/us/products/3005086>

Zack marker strip

Zack marker strip - ZB10,QR:FORTL.ZAHLEN - 1053027

<https://www.phoenixcontact.com/us/products/1053027>

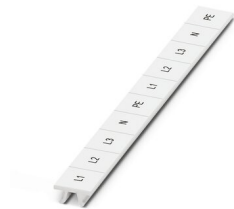


Zack marker strip, Strip, white, labeled, can be labeled with: CMS-P1-PLOTTER, Printed vertically: consecutive numbers 1 ... 10, 11 ... 20, etc. up to 91 ... 100, mounting type: snapped, for terminal block width: 10.2 mm, lettering field size: 10.15 x 10.5 mm, Number of individual labels: 10

Marker for terminal blocks

Marker for terminal blocks - ZB10,LGS:L1-N,PE - 1053412

<https://www.phoenixcontact.com/us/products/1053412>



Marker for terminal blocks, Strip, white, labeled, can be labeled with: CMS-P1-PLOTTER, horizontal: L1, L2, L3, N, PE, L1, L2, L3, N, PE, mounting type: snapped, for terminal block width: 10.2 mm, lettering field size: 10.15 x 10.5 mm, Number of individual labels: 10

Feed-through terminal block - UK 10 N BU



3005086

<https://www.phoenixcontact.com/us/products/3005086>

Marker for terminal blocks

Marker for terminal blocks - ZB10,LGS:U-N - 1053438

<https://www.phoenixcontact.com/us/products/1053438>



Marker for terminal blocks, Strip, white, labeled, can be labeled with: CMS-P1-PLOTTER, horizontal: U, V, W, N, GND, U, V, W, N, GND, mounting type: snapped, for terminal block width: 10.2 mm, lettering field size: 10.15 x 10.5 mm, Number of individual labels: 10

Marker for terminal blocks

Marker for terminal blocks - UC-TM 10 - 0818069

<https://www.phoenixcontact.com/us/products/0818069>



Marker for terminal blocks, Sheet, white, unlabeled, can be labeled with: BLUEMARK ID COLOR, BLUEMARK ID, BLUEMARK CLED, PLOTMARK, CMS-P1-PLOTTER, mounting type: snapped, for terminal block width: 10.2 mm, lettering field size: 9.6 x 10.5 mm, Number of individual labels: 48

Feed-through terminal block - UK 10 N BU

3005086

<https://www.phoenixcontact.com/us/products/3005086>

Marker for terminal blocks

Marker for terminal blocks - UC-TM 10 CUS - 0824605

<https://www.phoenixcontact.com/us/products/0824605>



Marker for terminal blocks, can be ordered: by sheet, white, labeled according to customer specifications, mounting type: snap into tall marker groove, for terminal block width: 10.2 mm, lettering field size: 9.6 x 10.5 mm, Number of individual labels: 48

Marker for terminal blocks

Marker for terminal blocks - UCT-TM 10 - 0829142

<https://www.phoenixcontact.com/us/products/0829142>



Marker for terminal blocks, Sheet, white, unlabeled, can be labeled with: TOPMARK NEO, TOPMARK LASER, BLUEMARK ID COLOR, BLUEMARK ID, BLUEMARK CLED, THERMOMARK PRIME, THERMOMARK CARD 2.0, THERMOMARK CARD, mounting type: snapped, for terminal block width: 10.2 mm, lettering field size: 8.9 x 9.6 mm, Number of individual labels: 36

Feed-through terminal block - UK 10 N BU

3005086

<https://www.phoenixcontact.com/us/products/3005086>

Marker for terminal blocks

Marker for terminal blocks - UCT-TM 10 CUS - 0829623

<https://www.phoenixcontact.com/us/products/0829623>



Marker for terminal blocks, can be ordered: by sheet, white, labeled according to customer specifications, mounting type: snap into tall marker groove, for terminal block width: 10.2 mm, lettering field size: 8.9 x 9.6 mm, Number of individual labels: 36

Test plugs

Test plugs - PS-MT - 0311647

<https://www.phoenixcontact.com/us/products/0311647>



Test plugs, color: silver

Feed-through terminal block - UK 10 N BU

3005086

<https://www.phoenixcontact.com/us/products/3005086>

Insulating sleeve

Insulating sleeve - PS-IH WH - 0311566

<https://www.phoenixcontact.com/us/products/0311566>



Insulating sleeve, color: white

Insulating sleeve

Insulating sleeve - PS-IH RD - 0311579

<https://www.phoenixcontact.com/us/products/0311579>



Insulating sleeve, color: red

Feed-through terminal block - UK 10 N BU

3005086

<https://www.phoenixcontact.com/us/products/3005086>

Insulating sleeve

Insulating sleeve - PS-IH BU - 0311582

<https://www.phoenixcontact.com/us/products/0311582>



Insulating sleeve, color: blue

Insulating sleeve

Insulating sleeve - PS-IH YE - 0311595

<https://www.phoenixcontact.com/us/products/0311595>



Insulating sleeve, color: yellow

Feed-through terminal block - UK 10 N BU

3005086

<https://www.phoenixcontact.com/us/products/3005086>

Insulating sleeve

Insulating sleeve - PS-IH GN - 0311605

<https://www.phoenixcontact.com/us/products/0311605>



Insulating sleeve, color: green

Insulating sleeve

Insulating sleeve - PS-IH GY - 0311621

<https://www.phoenixcontact.com/us/products/0311621>



Insulating sleeve, color: gray

Feed-through terminal block - UK 10 N BU

3005086

<https://www.phoenixcontact.com/us/products/3005086>

Insulating sleeve

Insulating sleeve - PS-IH BK - 0311634

<https://www.phoenixcontact.com/us/products/0311634>



Insulating sleeve, color: black

Insulating sleeve

Insulating sleeve - PS-IH VT - 0311618

<https://www.phoenixcontact.com/us/products/0311618>



Insulating sleeve, color: violet

Feed-through terminal block - UK 10 N BU

3005086

<https://www.phoenixcontact.com/us/products/3005086>

End clamp

End clamp - CLIPFIX 35 - 3022218

<https://www.phoenixcontact.com/us/products/3022218>



Quick mounting end clamp for NS 35/7,5 DIN rail or NS 35/15 DIN rail, with marking option, width: 9.5 mm, color: gray

End clamp

End clamp - CLIPFIX 35-5 - 3022276

<https://www.phoenixcontact.com/us/products/3022276>



Quick mounting end clamp for NS 35/7,5 DIN rail or NS 35/15 DIN rail, with marking option, with parking option for FBS...5, FBS...6, KSS 5, KSS 6, width: 5.15 mm, color: gray

Feed-through terminal block - UK 10 N BU

3005086

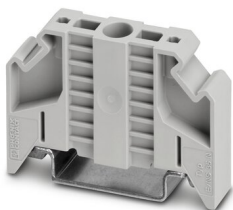
<https://www.phoenixcontact.com/us/products/3005086>

End clamp

End clamp - E/NS 35 N - 0800886

<https://www.phoenixcontact.com/us/products/0800886>

End clamp, width: 9.5 mm, color: gray

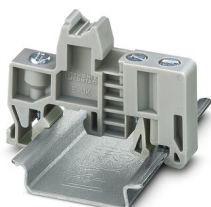


End clamp

End clamp - E/UK - 1201442

<https://www.phoenixcontact.com/us/products/1201442>

End clamp, material: PA, color: gray, Mounting on a DIN rail NS 32 or NS 35



Feed-through terminal block - UK 10 N BU

3005086

<https://www.phoenixcontact.com/us/products/3005086>



End clamp

End clamp - E/UK 1 - 1201413

<https://www.phoenixcontact.com/us/products/1201413>



End clamps, for supporting the ends of double-level and three-level terminal blocks, width: 10 mm, color: gray

Female test connector

Female test connector - PSBJ 4/15/6 FARBLOS - 0303419

<https://www.phoenixcontact.com/us/products/0303419>



Female test connector, color: transparent

Feed-through terminal block - UK 10 N BU

3005086

<https://www.phoenixcontact.com/us/products/3005086>

Female test connector

Female test connector - PSBJ 4/15/6 WH - 0303312

<https://www.phoenixcontact.com/us/products/0303312>



Female test connector, color: white

Female test connector

Female test connector - PSBJ 4/15/6 RD - 0303325

<https://www.phoenixcontact.com/us/products/0303325>



Female test connector, color: red

Feed-through terminal block - UK 10 N BU

3005086

<https://www.phoenixcontact.com/us/products/3005086>

Female test connector

Female test connector - PSBJ 4/15/6 BU - 0303354

<https://www.phoenixcontact.com/us/products/0303354>



Female test connector, color: blue

Female test connector

Female test connector - PSBJ 4/15/6 YE - 0303367

<https://www.phoenixcontact.com/us/products/0303367>



Female test connector, color: yellow

Feed-through terminal block - UK 10 N BU

3005086

<https://www.phoenixcontact.com/us/products/3005086>

Female test connector

Female test connector - PSBJ 4/15/6 GN - 0303370

<https://www.phoenixcontact.com/us/products/0303370>



Female test connector, color: green

Female test connector

Female test connector - PSBJ 4/15/6 VT - 0303383

<https://www.phoenixcontact.com/us/products/0303383>



Female test connector, color: violet

Feed-through terminal block - UK 10 N BU

3005086

<https://www.phoenixcontact.com/us/products/3005086>

Female test connector

Female test connector - PSBJ 4/15/6 GY - 0303396

<https://www.phoenixcontact.com/us/products/0303396>



Female test connector, color: gray

Female test connector

Female test connector - PSBJ 4/15/6 BK - 0303406

<https://www.phoenixcontact.com/us/products/0303406>



Female test connector, color: black

Feed-through terminal block - UK 10 N BU

3005086

<https://www.phoenixcontact.com/us/products/3005086>



勝特力電材超市-龍山店 886-3-5773766
勝特力電材超市-光復店 886-3-5729570
勝特力電子(上海) 86-21-34970699
勝特力電子(深圳) 86-755-83298787
<http://www.100y.com.tw>

Female test connector

Female test connector - PSB 4/7/6 - 0303299

<https://www.phoenixcontact.com/us/products/0303299>

Female test connector, color: silver



Phoenix Contact 2022 © - all rights reserved

<https://www.phoenixcontact.com>

Phoenix Contact USA
586 Fulling Mill Road
Middletown, PA 17057, United States
(+717) 944-1300
info@phoenixcon.com