

勝特力材料 886-3-5753170
勝特力电子(上海) 86-21-34970699
勝特力电子(深圳) 86-755-83298787
[Http://www.100y.com.tw](http://www.100y.com.tw)

PCE

Connection
to the future

Industrial plugs and sockets 16A-125A

Industrial plugs and sockets 16A - 125A

Plugs

Page **20**



Angled plugs

Page **24**



Wall mounted plugs

Page **26**



Flanged plugs

Page **32**



Phase inverters

Page **40**



Accessories

Page **44**



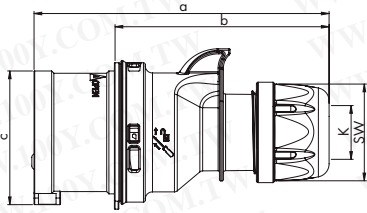
Connectors

Page **46**



Plugs

„Shark“ Plug

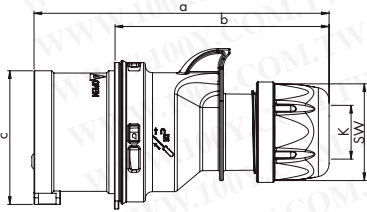


	16 Amp			32 Amp		
	3	4	5	3	4	5
a	122	128	134	150	150	155
b	86	92	98	104	104	109
c	47	53	61	63	63	70
K_cable Ø [mm]	6-15	6-15	8-16	11,5-20	11,5-20	11,5-22
Kind of connection:	Screw terminal					
Wire flexible [mm ²]	1-2,5			2,5-6		
Contact screws [Ncm]	100 Ncm			110 Ncm		
SW	42	42	42	50	50	50
Weight [g]	112	131	154	184	204	236

- with screw terminals
- housing material: PA6
- contacts: brass
- to order nickel-plated contacts please add a "v" e.g. 015-6v

IP44 splashproof

„Turbo Shark“ Plug

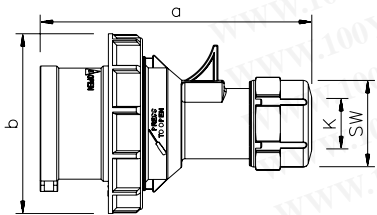


	16 Amp			32 Amp		
	3	4	5	3	4	5
a	122	128	134	150	150	155
b	86	92	98	104	104	109
c	47	53	61	63	63	70
K_cable Ø [mm]	6-15	6-15	8-16	11,5-20	11,5-20	11,5-22
Kind of connection:	Screwless terminal					
Wire flexible [mm ²]	1-2,5			2,5-6		
SW	42	42	42	50	50	50
Weight [g]	114	135	159	189	209	244

- screwless connection technology
- housing material: PA6
- contacts: brass
- to order nickel-plated contacts please add a "v" e.g. 015-6TTv

IP44 splashproof

„Twist“ Plug

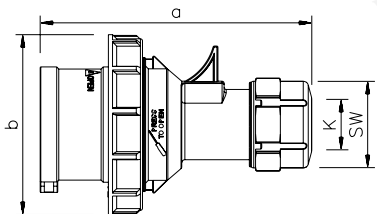


	16 Amp			32 Amp		
	3	4	5	3	4	5
a	118	124	131	146	146	152
b	71	79	87	93	93	100
K_cable Ø [mm]	6-15	6-15	8-16	11,5-20	11,5-20	11,5-22
Kind of connection:	Screw terminal					
Wire flexible [mm ²]	1-2,5			2,5-6		
Contact screws [Ncm]	100 Ncm			110 Ncm		
SW	38	38	42	50	50	50
Weight [g]	133	153	180	218	237	273

- with screw terminals
- housing material: PA6
- contacts: brass
- to order nickel-plated contacts please add a "v" e.g. 0152-6v

IP67 watertight

„Turbo Twist“ Plug



	16 Amp			32 Amp		
	3	4	5	3	4	5
a	118	124	131	146	146	152
b	71	79	87	93	93	100
K_cable Ø [mm]	6-15	6-15	8-16	11,5-20	11,5-20	11,5-22
Kind of connection:	Screwless terminal					
Wire flexible [mm ²]	1-2,5			2,5-6		
SW	38	38	42	50	50	50
Weight [g]	135	156	185	222	241	282

- screwless connection technology
- contacts: brass
- to order nickel-plated contacts please add a "v" e.g. 0152-6TTv

IP67 watertight

110V~

50/60Hz
4h

Cat.No.

230V~

50/60Hz
3p=6h
4p+5p=9h

Cat.No.

400V~

50/60Hz
3p=9h
4p+5p=6h

Cat.No.

500V~

50/60Hz
7h

Cat.No.

>50-500V~

100-300Hz
10h

Cat.No.

>50-500V~

301-500Hz
2h

Cat.No.

Amp. Poles pack unit

Amp.	Poles	pack unit	Cat.No.	Cat.No.	Cat.No.	Cat.No.	Cat.No.	Cat.No.
16	3	10	013-4	013-6	013-9	013-7	013-10	013-2
16	4	10	014-4	014-9	014-6	014-7	014-10	014-2
16	5	10	015-4	015-9	015-6	015-7	015-10	015-2
32	3	10	023-4	023-6	023-9	023-7	023-10	023-2
32	4	10	024-4	024-9	024-6	024-7	024-10	024-2
32	5	10	025-4	025-9	025-6	025-7	025-10	025-2



015-6



16	3	10	013-4TT	013-6TT	013-9TT			
16	4	10	014-4TT	014-9TT	014-6TT			
16	5	10	015-4TT	015-9TT	015-6TT			
32	3	10	023-4TT	023-6TT	023-9TT			
32	4	10	024-4TT	024-9TT	024-6TT			
32	5	10	025-4TT	025-9TT	025-6TT			

TURBO TWIST
click



015-6TT

Amp.	Poles	pack unit	Cat.No.	Cat.No.	Cat.No.	Cat.No.	Cat.No.	Cat.No.
16	3	10	0132-4	0132-6	0132-9	0132-7	0132-10	0132-2
16	4	10	0142-4	0142-9	0142-6	0142-7	0142-10	0142-2
16	5	10	0152-4	0152-9	0152-6	0152-7	0152-10	0152-2
32	3	10	0232-4	0232-6	0232-9	0232-7	0232-10	0232-2
32	4	10	0242-4	0242-9	0242-6	0242-7	0242-10	0242-2
32	5	10	0252-4	0252-9	0252-6	0252-7	0252-10	0252-2



0152-6

16	3	10	0132-4TT	0132-6TT	0132-9TT			
16	4	10	0142-4TT	0142-9TT	0142-6TT			
16	5	10	0152-4TT	0152-9TT	0152-6TT			
32	3	10	0232-4TT	0232-6TT	0232-9TT			
32	4	10	0242-4TT	0242-9TT	0242-6TT			
32	5	10	0252-4TT	0252-9TT	0252-6TT			

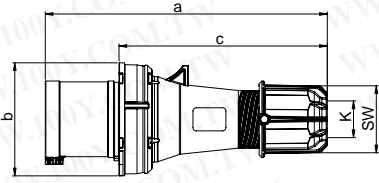
TURBO TWIST
click



0132-6TT



Plugs

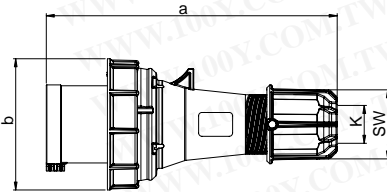


„Power Twist“ Plug

	63 Amp		
Poles	3	4	5
a	257	257	257
b	102	102	102
c	190	190	190
K_cable Ø [mm]	14,5-36	14,5-36	14,5-36
Kind of connection:	Contact frame with screws		
Wire flexible [mm ²]	6-16		
Contact screws [Ncm]	200 Ncm		
SW	61	61	61
Weight [g]	530	572	621

- contact frame with screws
- housing material: PA6
- contacts: nickel-plated contacts with pilot contact (see page 9)

IP44 splashproof

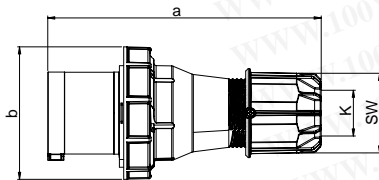


„Power Twist“ Plug

	63 Amp		
Poles	3	4	5
a	257	257	257
b	114	114	114
K_cable Ø [mm]	14,5-36	14,5-36	14,5-36
Kind of connection:	Contact frame with screws		
Wire flexible [mm ²]	6-16		
Contact screws [Ncm]	200 Ncm		
SW	61	61	61
Weight [g]	570	617	666

- contact frame with screws
- housing material: PA6
- contacts: nickel-plated contacts with pilot contact (see page 9)

IP66/67 watertight



„Power Twist“ Plug

	125 Amp		
Poles	3	4	5
a	270	270	270
b	131	131	131
K_cable Ø [mm]	22,5-50	22,5-50	22,5-50
Kind of connection:	Contact frame with screws		
Wire flexible [mm ²]	16-50		
Contact screws [Ncm]	450 Ncm		
SW	81	81	81
Weight [g]	956	1064	1169

- contact frame with screws
- housing material: PA6
- contacts: nickel-plated contacts with pilot contact (see page 9)

IP66/67 watertight

110V~

50/60Hz
4h

230V~

50/60Hz
3p=6h
4p+5p=9h

400V~

50/60Hz
3p=9h
4p+5p=6h

500V~

50/60Hz
7h

>50-500V~

100-300Hz
10h

>50-500V~

301-500Hz
2h

Amp.
Poles
pack unit

Cat.No.

Cat.No.

Cat.No.

Cat.No.

Cat.No.

Cat.No.

Amp.	Poles	pack unit	110V~ 50/60Hz 4h	230V~ 50/60Hz 3p=6h 4p+5p=9h	400V~ 50/60Hz 3p=9h 4p+5p=6h	500V~ 50/60Hz 7h	>50-500V~ 100-300Hz 10h	>50-500V~ 301-500Hz 2h
63	3	2	0331-4	0331-6	0331-9	0331-7	0331-10	0331-2
63	4	2	0341-4	0341-9	0341-6	0341-7	0341-10	0341-2
63	5	2	0351-4	0351-9	0351-6	0351-7	0351-10	0351-2



0351-6

Amp.	Poles	pack unit	110V~ 50/60Hz 4h	230V~ 50/60Hz 3p=6h 4p+5p=9h	400V~ 50/60Hz 3p=9h 4p+5p=6h	500V~ 50/60Hz 7h	>50-500V~ 100-300Hz 10h	>50-500V~ 301-500Hz 2h
63	3	2	033-4	033-6	033-9	033-7	033-10	033-2
63	4	2	034-4	034-9	034-6	034-7	034-10	034-2
63	5	2	035-4	035-9	035-6	035-7	035-10	035-2



035-6

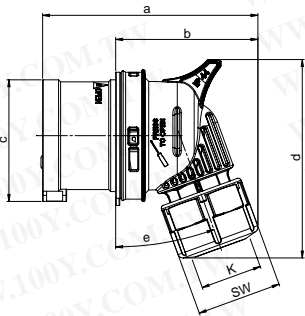
Amp.	Poles	pack unit	110V~ 50/60Hz 4h	230V~ 50/60Hz 3p=6h 4p+5p=9h	400V~ 50/60Hz 3p=9h 4p+5p=6h	500V~ 50/60Hz 7h	>50-500V~ 100-300Hz 10h	>50-500V~ 301-500Hz 2h
125	3	2	043-4	043-6	043-9	043-7	043-10	043-2
125	4	2	044-4	044-9	044-6	044-7	044-10	044-2
125	5	2	045-4	045-9	045-6	045-7	045-10	045-2



045-6



Angled plugs

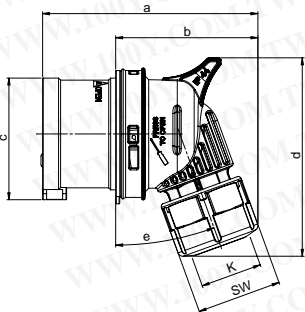


„Twist“ Angled plug

		16 Amp	32 Amp
Poles	3	4	5
a	96	98	108
b	59	62	71
c	47	53	61
d	82	87	99
e [°]	15	15	20
K_cable Ø [mm]	6-15	6-15	8-16
Kind of connection:		Screw terminal	
Wire flexible [mm ²]		1-2,5	2,5-6
Contact screws [Ncm]		100 Ncm	110Ncm
SW	38	38	42
Weight [g]	110	133	158

- with screw terminals
- housing material
16/3 16/4: PA6
16/5 32/5: PC/ABS
- contacts: brass
- to order nickel-plated contacts please add a "v" e.g. 8015-6v

IP44 splashproof

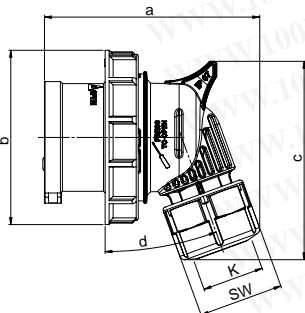


„Turbo Twist“ Angled plug

		16 Amp	32 Amp
Poles	3	4	5
a	96	98	108
b	59	62	71
c	47	53	61
d	82	87	99
e [°]	15	15	20
K_cable Ø [mm]	6-15	6-15	8-16
Kind of connection:		Screwless terminal	
Wire flexible [mm ²]		1-2,5	2,5-6
SW	38	38	42
Weight [g]	113	137	163

- screwless connection technology
- housing material
16/3 16/4: PA6
16/5 32/5: PC/ABS
- contacts: brass
- to order nickel-plated contacts please add a "v" e.g. 8015-6TTv

IP44 splashproof

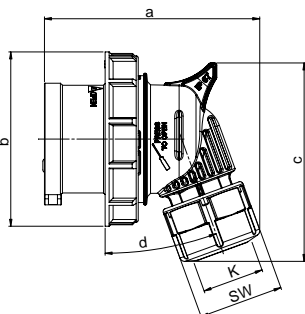


„Twist“ Angled plug

		16 Amp	32 Amp
Poles	3	4	5
a	96	98	108
b	71	79	87
c	82	87	99
d [°]	15	15	20
K_cable Ø [mm]	6-15	6-15	8-16
Kind of connection:		Screw terminal	
Wire flexible [mm ²]		1-2,5	2,5-6
Contact screws [Ncm]		100 Ncm	110Ncm
SW	38	38	42
Weight [g]	133	154	184

- with screw terminals
- housing material
16/3 16/4: PA6
16/5 32/5: PC/ABS
- contacts: brass
- to order nickel-plated contacts please add a "v" e.g. 80152-6v

IP67 watertight



„Turbo Twist“ Angled plug

		16 Amp	32 Amp
Poles	3	4	5
a	96	98	108
b	71	79	87
c	82	87	99
d [°]	15	15	20
K_cable Ø [mm]	6-15	6-15	8-16
Kind of connection:		Screwless terminal	
Wire flexible [mm ²]		1-2,5	2,5-6
SW	38	38	42
Weight [g]	135	157	189

- screwless connection technology
- housing material
16/3 16/4: PA6
16/5 32/5: PC/ABS
- contacts: brass
- to order nickel-plated contacts please add a "v" e.g. 80152-6TTv

IP67 watertight

110V~

50/60Hz
4h

230V~

50/60Hz
3p=6h
4p+5p=9h

400V~

50/60Hz
3p=9h
4p+5p=6h

500V~

50/60Hz
7h

>50-500V~

100-300Hz
10h

>50-500V~

301-500Hz
2h

Amp.
Poles
pack unit

Cat.No.

Cat.No.

Cat.No.

Cat.No.

Cat.No.

Cat.No.

16 3 10
16 4 10
16 5 10
32 5 10

8013-4
8014-4
8015-4
8025-4

8013-6
8014-9
8015-9
8025-9

8013-9
8014-6
8015-6
8025-6

8013-7
8014-7
8015-7
8025-7

8013-10
8014-10
8015-10
8025-10

8013-2
8014-2
8015-2
8025-2



16 3 10
16 4 10
16 5 10
32 5 10

8013-4TT
8014-4TT
8015-4TT
8025-4TT

8013-6TT
8014-9TT
8015-9TT
8025-9TT

8013-9TT
8014-6TT
8015-6TT
8025-6TT



16 3 10
16 4 10
16 5 10
32 5 10

80132-4
80142-4
80152-4
80252-4

80132-6
80142-9
80152-9
80252-9

80132-9
80142-6
80152-6
80252-6

80132-7
80142-7
80152-7
80252-7

80132-10
80142-10
80152-10
80252-10

80132-2
80142-2
80152-2
80252-2



16 3 10
16 4 10
16 5 10
32 5 10

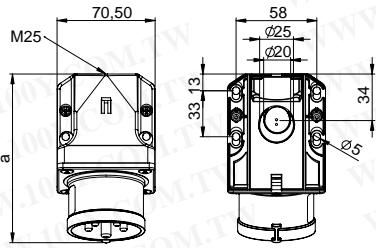
80132-4TT
80142-4TT
80152-4TT
80252-4TT

80132-6TT
80142-9TT
80152-9TT
80252-9TT

80132-9TT
80142-6TT
80152-6TT
80252-6TT



Wall mounted plugs



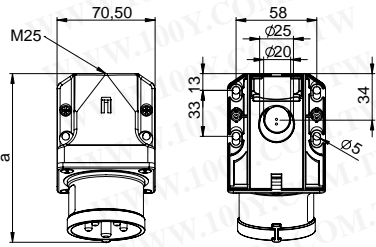
b=height
angle=15°

Wall mounted plug

Poles	16 Amp			32 Amp		
	3	4	5	3	4	5
a	120	121	122	131	131	132
b	76	76	79	82	82	85
M	25	25	25	25	25	25
Kind of connection: Screw terminal						
Wire flexible [mm ²]	1-2,5			2,5-6		
solid [mm ²]	1-4			2,5-10		
Contact screws [Ncm]	100 Ncm			110 Ncm		
Weight [g]	173	188	205	212	232	253

- with screw terminals
- housing material: PA6
- contacts: brass
 - to order nickel-plated contacts please add a "v" e.g. 515-6v
- top and rear entry
- incl. cable gland

IP44 splashproof



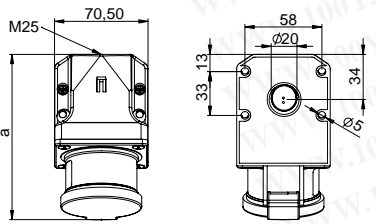
b=height
angle=15°

„Turbo Twist“ Wall mounted plug

Poles	16 Amp		32 Amp	
	3	5	4	5
a	120	122	131	132
b	76	79	82	85
M	25	25	25	25
Kind of connection: Screwless terminal				
Wire flexible [mm ²]	1-2,5		2,5-6	
solid [mm ²]	1-4		2,5-10	
Weight [g]	176	209	238	261

- screwless connection technology
- housing material: PA6
- contacts: brass
 - to order nickel-plated contacts please add a "v" e.g. 515-6TTv
- top and rear entry
- incl. cable gland

IP44 splashproof



b=height
angle=15°

Wall mounted plug

Poles	16 Amp			32 Amp		
	3	4	5	3	4	5
a	127	128	128	137	137	140
b	92	94	97	99	99	104
M	25	25	25	25	25	25
Kind of connection: Screw terminal						
Wire flexible [mm ²]	1-2,5			2,5-6		
solid [mm ²]	1-4			2,5-10		
Contact screws [Ncm]	100 Ncm			110 Ncm		
Weight [g]	230	245	263	272	292	315

- with screw terminals
- with hinged lid and gasket, for increased ingress protection
- housing material: PA6
- contacts: brass
 - to order nickel-plated contacts please add a "v" e.g. 515-6dv
- top and rear entry
- incl. cable gland

IP44 splashproof

Amp.	Poles	pack unit	110V~	230V~	400V~	500V~	>50-500V~	>50-500V~
			50/60Hz 4h	50/60Hz 3p=6h 4p+5p=9h	50/60Hz 3p=9h 4p+5p=6h	50/60Hz 7h	100-300Hz 10h	301-500Hz 2h
			Cat.No.	Cat.No.	Cat.No.	Cat.No.	Cat.No.	Cat.No.
16	3	10	513-4	513-6	513-9	513-7	513-10	513-2
16	4	10	514-4	514-9	514-6	514-7	514-10	514-2
16	5	10	515-4	515-9	515-6	515-7	515-10	515-2
32	3	10	523-4	523-6	523-9	523-7	523-10	523-2
32	4	10	524-4	524-9	524-6	524-7	524-10	524-2
32	5	10	525-4	525-9	525-6	525-7	525-10	525-2



515-6

16	3	10	513-4TT	513-6TT	513-9TT			
16	5	10	515-4TT	515-9TT	515-6TT			
32	4	10	524-4TT	524-9TT	524-6TT			
32	5	10	525-4TT	525-9TT	525-6TT			

TURBO
TWIST <click>



515-6TT

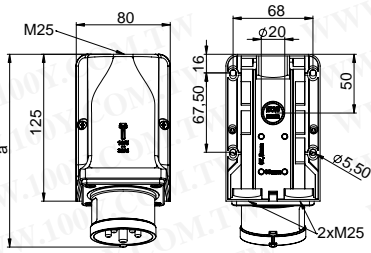
16	3	10	513-4d	513-6d	513-9d	513-7d	513-10d	513-2d
16	4	10	514-4d	514-9d	514-6d	514-7d	514-10d	514-2d
16	5	10	515-4d	515-9d	515-6d	515-7d	515-10d	515-2d
32	3	10	523-4d	523-6d	523-9d	523-7d	523-10d	523-2d
32	4	10	524-4d	524-9d	524-6d	524-7d	524-10d	524-2d
32	5	10	525-4d	525-9d	525-6d	525-7d	525-10d	525-2d



515-6d



Wall mounted plugs



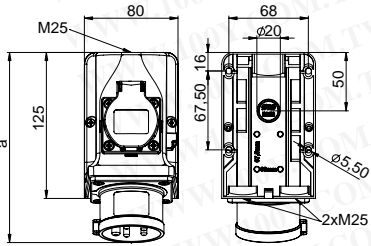
b=height
angle=15°

Wall mounted plug

Poles	16 Amp			32 Amp		
	3	4	5	3	4	5
a	163	163	164	173	173	174
b	109	109	112	115	115	118
M	3x25		3x25	3x25		3x25
Kind of connection: Screw terminal						
Wire flexible [mm ²]	1-2,5			2,5-6		
solid [mm ²]	1-4			2,5-10		
Contact screws [Ncm]	100 Ncm			110 Ncm		
Weight [g]	263	278	295	302	322	341

- with screw terminals
- for wiring through
- housing material: PA6
- contacts: brass
 - to order nickel-plated contacts please add a "v" e.g. 9515-6v
- top, 2x bottom or rear entry
- incl. cable gland

IP44 splashproof



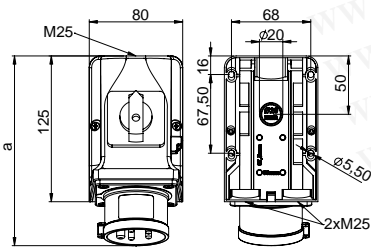
b=height
angle=15°

Wall mounted plug - COMBO

Poles	16 Amp			32 Amp		
	3	4	5	3	4	5
a	162	162	163	172	172	173
b	117	117	117	117	117	118
M	3x25		3x25	3x25		3x25
Kind of connection: Screw terminal						
Wire flexible [mm ²]	1-2,5			2,5-6		
solid [mm ²]	1-4			2,5-10		
Contact screws CEE [Ncm]	100 Ncm			110 Ncm		
Screw terminals [Ncm]				120 Ncm		
Weight [g]	367	382	399	422	442	463

- with screw terminals
- wall mounted plug with integrated socket (DIN 49440)
- connecting terminals up to 10mm²
- **ready wired**
- for plug 32A the socket 16A (DIN 49440) is protected by fuse (10A slow)
- housing material: PA6
- contacts: brass
 - to order nickel-plated contacts please add a "v" e.g. 95215-6v
- top, 2x bottom or rear entry
- incl. cable gland
- special design with Belg./French socket outlet or non wired version are available on request

IP44 splashproof



b=height
angle=15°

Wall mounted plug with switch

Poles	16 Amp	32 Amp
	5	5
a	163	173
b	128	128
M	3x25	
Kind of connection: Screw terminal		
Wire flexible [mm ²]	1-2,5	
solid [mm ²]	1-4	
Weight [g]	474	522

- with screw terminals
- wall mounting plug with integrated ON/OFF switch AC22A
- **prewired**
- housing material: PA6
- contacts: brass
 - to order nickel-plated contacts please add a "v" e.g. 75615-6v
- top, 2x bottom or rear entry
- incl. cable gland

IP44 splashproof

110V~

50/60Hz
4h

230V~

50/60Hz
3p=6h
4p+5p=9h

400V~

50/60Hz
3p=9h
4p+5p=6h

500V~

50/60Hz
7h

>50-500V~

100-300Hz
10h

>50-500V~

301-500Hz
2h

Amp.
Poles
pack unit

Cat.No.

Cat.No.

Cat.No.

Cat.No.

Cat.No.

Cat.No.

Amp.	Poles	pack unit	Cat.No.	Cat.No.	Cat.No.	Cat.No.	Cat.No.	Cat.No.
16	3	5	9513-4	9513-6	9513-9	9513-7	9513-10	9513-2
16	4	5	9514-4	9514-9	9514-6	9514-7	9514-10	9514-2
16	5	5	9515-4	9515-9	9515-6	9515-7	9515-10	9515-2
32	3	5	9523-4	9523-6	9523-9	9523-7	9523-10	9523-2
32	4	5	9524-4	9524-9	9524-6	9524-7	9524-10	9524-2
32	5	5	9525-4	9525-9	9525-6	9525-7	9525-10	9525-2



9515-6



Amp.	Poles	pack unit	Cat.No.	Cat.No.	Cat.No.
16	3	5		95213-6	
16	4	5		95214-9	95214-6
16	5	5			95215-6
32	3	5		95223-6	
32	4	5		95224-9	95224-6
32	5	5			95225-6



95215-6



95225-6

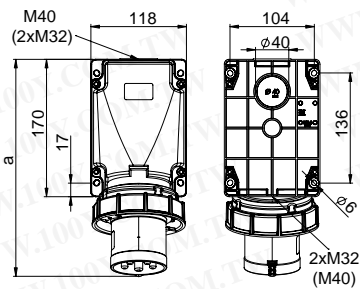
Amp.	Poles	pack unit	Cat.No.
16	5	5	75615-6
32	5	5	75625-6



75615-6



Wall mounted plugs



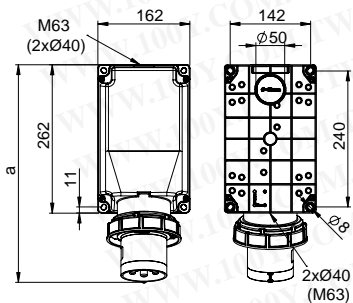
b=height
angle=15°

„Power Twist“ Wall mounted plug

	63 Amp		
	3	4	5
Poles	3	4	5
a	271	271	271
b	175	175	175
Kind of connection: Contact frame with screws			
Wire flexible [mm ²]	6-16		
solid [mm ²]	6-25		
Contact screws [Ncm]	200 Ncm		
Weight [g]	812	864	914

- contact frame with screws
- housing material: PC/ABS
- contacts: nickel-plated contacts, with pilot contact (see page 9)
- top, bottom or rear entry
- housing can be rotated by 180°
- incl. blank cable gland
- for waterproof cover and cable-glands see accessories page 44

IP66/67 watertight



b=height
angle=15°

„Power Twist“ Wall mounted plug

	125 Amp		
	3	4	5
Poles	3	4	5
a	387	387	387
b	209	209	209
Kind of connection: Contact frame with screws			
Wire flexible [mm ²]	16-50		
solid [mm ²]	16-70		
Contact screws [Ncm]	450 Ncm		
Weight [g]	1620	1725	1834

- contact frame with screws
- housing material: PC/ABS
- contacts: nickel-plated contacts, with pilot contact (see page 9)
- top, bottom or rear entry
- housing can be rotated by 180°
- incl. blank cable gland
- for waterproof cover and cable-glands see accessories page 44

IP66/67 watertight

110V~

50/60Hz
4h

Cat.No.

230V~

50/60Hz
3p=6h
4p+5p=9h

Cat.No.

400V~

50/60Hz
3p=9h
4p+5p=6h

Cat.No.

500V~

50/60Hz
7h

Cat.No.

>50-500V~

100-300Hz
10h

Cat.No.

>50-500V~

301-500Hz
2h

Cat.No.

Amp.
Poles
pack unit

Amp.	Poles	pack unit	110V~ 50/60Hz 4h Cat.No.	230V~ 50/60Hz 3p=6h 4p+5p=9h Cat.No.	400V~ 50/60Hz 3p=9h 4p+5p=6h Cat.No.	500V~ 50/60Hz 7h Cat.No.	>50-500V~ 100-300Hz 10h Cat.No.	>50-500V~ 301-500Hz 2h Cat.No.
63	3	2	533-4	533-6	533-9	533-7	533-10	533-2
63	4	2	534-4	534-9	534-6	534-7	534-10	534-2
63	5	2	535-4	535-9	535-6	535-7	535-10	535-2



535-6

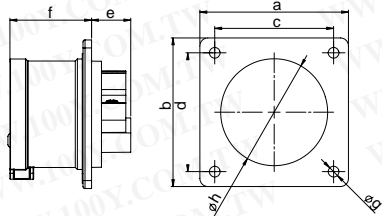
Amp.	Poles	pack unit	110V~ 50/60Hz 4h Cat.No.	230V~ 50/60Hz 3p=6h 4p+5p=9h Cat.No.	400V~ 50/60Hz 3p=9h 4p+5p=6h Cat.No.	500V~ 50/60Hz 7h Cat.No.	>50-500V~ 100-300Hz 10h Cat.No.	>50-500V~ 301-500Hz 2h Cat.No.
125	3	1	543-4	543-6	543-9	543-7	543-10	543-2
125	4	1	544-4	544-9	544-6	544-7	544-10	544-2
125	5	1	545-4	545-9	545-6	545-7	545-10	545-2



545-6



Flanged plugs

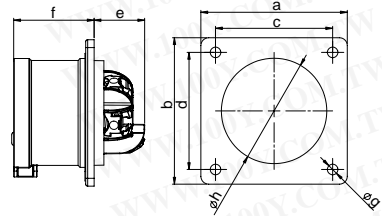


Flanged plug straight

	16 Amp	32 Amp
Poles	5	5
Flange		
a x b	75	75
Fixing center		
c x d	60	60
e	20	21
f	42	51
g	5,5	5,5
h	55	55
Kind of connection:	Screw terminal	
Wire flexible [mm ²]	1-2,5	2,5-6
solid [mm ²]	1-4	2,5-10
Contact screws [Ncm]	100 Ncm	110 Ncm
Weight [g]	121	170

- with screw terminals
- housing material: PA6
- contacts: brass
 - to order nickel-plated contacts please add a "v" e.g. 615-6f7v
- According to EN 60309: For correct use a locking device has to be provided (see page 34)

IP44 splashproof

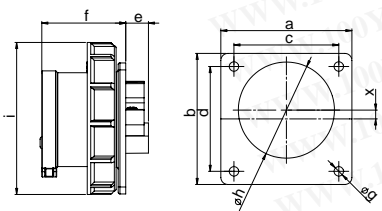


„Turbo Twist“ Flanged plug straight

	16 Amp	32 Amp
Poles	5	5
Flange		
a x b	75	75
Fixing center		
c x d	60	60
e	26	29
f	42	51
g	5,5	5,5
h	55	55
Kind of connection:	Screwless terminal	
Wire flexible [mm ²]	1-2,5	2,5-6
solid [mm ²]	1-4	2,5-10
Weight [g]	126	178

- screwless connection technology
- housing material: PA6
- contacts: brass
 - to order nickel-plated contacts please add a "v" e.g. 615-6TTf7v
- According to EN 60309: For correct use a locking device has to be provided (see page 34)

IP44 splashproof

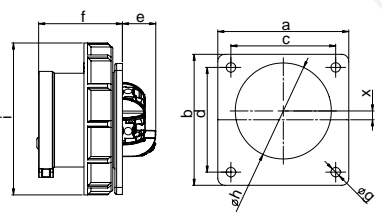


Flanged plug straight

	16 Amp		32 Amp
Poles	3	5	5
Flange			
a x b	75	75	75
Fixing center			
c x d	60	60	60
e	15	13	14
f	48	48	58
g	5,5	5,5	5,5
h	43	55	55
i	71	87	100
x	11,3	5,05	0
Kind of connection:	Screw terminal		
Wire flexible [mm ²]	1-2,5		2,5-6
solid [mm ²]	1-4		2,5-10
Contact screws [Ncm]	100 Ncm		110 Ncm
Weight [g]	109	145	208

- with screw terminals
- housing material: PA6
- contacts: brass
 - to order nickel-plated contacts please add a "v" e.g. 6152-6v
- According to EN 60309: For correct use a locking device has to be provided (see page 34)
- for 16A 3p and 16A 5p the plug is placed off centered for keeping the standards

IP67 watertight



„Turbo Twist“ Flanged plug straight

	16 Amp	32 Amp
Poles	3	5
Flange		
a x b	75	75
Fixing center		
c x d	60	60
e	20	21
f	48	58
g	5,5	5,5
h	43	55
i	71	100
x	11,3	0
Kind of connection:	Screwless terminal	
Wire flexible [mm ²]	1-2,5	2,5-6
solid [mm ²]	1-4	2,5-10
Weight [g]	112	216

- screwless connection technology
- housing material: PA6
- contacts: brass
 - to order nickel-plated contacts please add a "v" e.g. 6152-6ttv
- According to EN 60309: For correct use a locking device has to be provided (see page 34)
- for 16A 3p and 16A 5p the plug is placed off centered for keeping the standards

IP67 watertight

110V~

50/60Hz
4h

Cat.No.

230V~

50/60Hz
3p=6h
4p+5p=9h

Cat.No.

400V~

50/60Hz
3p=9h
4p+5p=6h

Cat.No.

500V~

50/60Hz
7h

Cat.No.

>50-500V~

100-300Hz
10h

Cat.No.

>50-500V~

301-500Hz
2h

Cat.No.

Amp. Poles pack unit

with flange 75 x 75

16	5	10	615-4f7	615-9f7	615-6f7	615-7f7	615-10f7	615-2f7
----	---	----	---------	---------	----------------	---------	----------	---------

32	5	10	625-4f7	625-9f7	625-6f7	625-7f7	625-10f7	625-2f7
----	---	----	---------	---------	----------------	---------	----------	---------



615-6f7

with flange 75 x 75

16	5	10	615-4TTf7	615-9TTf7	615-6TTf7			
----	---	----	-----------	-----------	------------------	--	--	--

32	5	10	625-4TTf7	625-9TTf7	625-6TTf7			
----	---	----	-----------	-----------	------------------	--	--	--



615-6TTf7

with flange 75 x 75

16	3	10	6132-4	6132-6	6132-9	6132-7	6132-10	6132-2
----	---	----	--------	---------------	--------	--------	---------	--------

16	5	10	6152-4	6152-9	6152-6	6152-7	6152-10	6152-2
----	---	----	--------	--------	---------------	--------	---------	--------

32	5	10	6252-4	6252-9	6252-6	6252-7	6252-10	6252-2
----	---	----	--------	--------	---------------	--------	---------	--------



6152-6

with flange 75 x 75

16	3	10	6132-4TT	6132-6TT	6132-9TT			
----	---	----	----------	-----------------	----------	--	--	--

16	5	10	6152-4TT	6152-9TT	6152-6TT			
----	---	----	----------	----------	-----------------	--	--	--

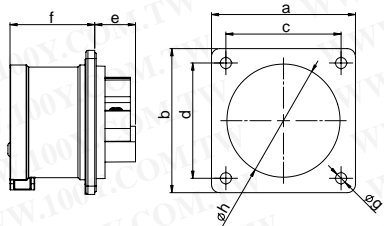
32	5	10	6252-4TT	6252-9TT	6252-6TT			
----	---	----	----------	----------	-----------------	--	--	--



6152-6TT



Flanged plugs

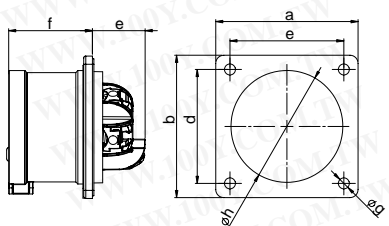


Flanged plug straight

	16 Amp			32 Amp		
	3	4	5	3	4	5
Poles	3	4	5	3	4	5
Flange						
a x b	70	70	70	70	70	70
Fixing center						
c x d	56	56	56	56	56	56
e	21	21	20	21	21	21
f	42	42	42	51	51	51
g	5,5	5,5	5,5	5,5	5,5	5,5
h	43	43	55	55	55	55
Kind of connection:	Screw terminal					
Wire flexible [mm ²]	1-2,5			2,5-6		
solid [mm ²]	1-4			2,5-10		
Contact screws [Ncm]	100 Ncm			110 Ncm		
Weight [g]	86	101	118	125	145	165

- with screw terminals
- housing material: PA6
- contacts: brass
- to order nickel-plated contacts please add a "v" e.g. 615-6V
- According to EN 60309: For correct use a locking device has to be provided (see below)

IP44 splashproof

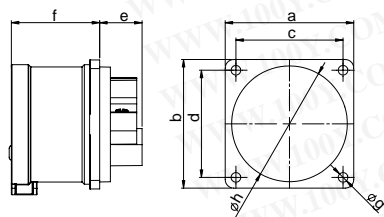


„Turbo Twist“ Flanged plug straight

	16 Amp		32 Amp	
	3	5	4	5
Poles	3	5	4	5
Flange				
a x b	70	70	70	70
Fixing center				
c x d	56	56	56	56
e	26	26	29	29
f	42	42	51	51
g	5,5	5,5	5,5	5,5
h	43	55	55	55
Kind of connection:	Screwless terminal			
Wire flexible [mm ²]	1-2,5		2,5-6	
solid [mm ²]	1-4		2,5-10	
Weight [g]	899	122	151	172

- screwless connection technology
- housing material: PA6
- contacts: brass
- to order nickel-plated contacts please add a "v" e.g. 615-6TTV
- According to EN 60309: For correct use a locking device has to be provided (see below)

IP44 splashproof

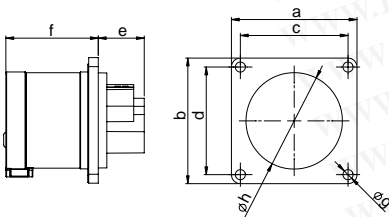


Flanged plug straight

	16 Amp		
	3	4	5
Poles	3	4	5
Flange			
a x b	60	60	60
Fixing center			
c x d	50	50	50
e	21	21	20
f	42	42	42
g	4,5	4,5	4,5
h	43	43	55
Kind of connection:	Screw terminal		
Wire flexible [mm ²]	1-2,5		
solid [mm ²]	1-4		
Contact screws [Ncm]	100 Ncm		
Weight [g]	78	93	109

- with screw terminals
- housing material: PA6
- contacts: brass
- to order nickel-plated contacts please add a "v" e.g. 615-6f6v
- According to EN 60309: For correct use a locking device has to be provided (see below)

IP44 splashproof

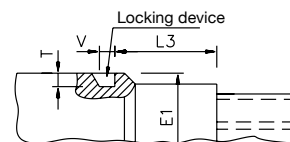
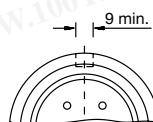
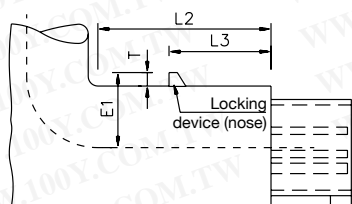
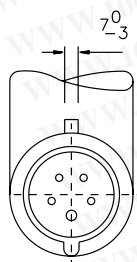
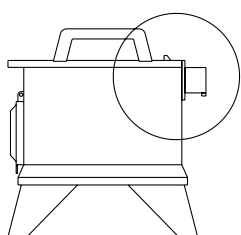


Flanged plug straight

	16 Amp	
	3	4
Poles	3	4
Flange		
a x b	56	56
Fixing center		
c x d	48	48
e	21	21
f	42	42
g	4,5	4,5
h	43	43
Kind of connection:	Screw terminal	
Wire flexible [mm ²]	1-2,5	
solid [mm ²]	1-4	
Contact screws [Ncm]	100 Ncm	
Weight [g]	76	91

- with screw terminals
- housing material: PA6
- contacts: brass
- to order nickel-plated contacts please add a "v" e.g. 615-6f3v
- According to EN 60309: For correct use a locking device has to be provided (see below)

IP44 splashproof



Amp.	Poles	pack unit	110V~	230V~	400V~	500V~	>50-500V~	>50-500V~
			50/60Hz 4h	50/60Hz 3p=6h 4p+5p=9h	50/60Hz 3p=9h 4p+5p=6h	50/60Hz 7h	100-300Hz 10h	301-500Hz 2h
			Cat.No.	Cat.No.	Cat.No.	Cat.No.	Cat.No.	Cat.No.
with flange 70 x 70								
16	3	10	613-4	613-6	613-9	613-7	613-10	613-2
16	4	10	614-4	614-9	614-6	614-7	614-10	614-2
16	5	10	615-4	615-9	615-6	615-7	615-10	615-2
32	3	10	623-4	623-6	623-9	623-7	623-10	623-2
32	4	10	624-4	624-9	624-6	624-7	624-10	624-2
32	5	10	625-4	625-9	625-6	625-7	625-10	625-2



613-4

Amp.	Poles	pack unit	110V~	230V~	400V~	500V~	>50-500V~	>50-500V~
			50/60Hz 4h	50/60Hz 3p=6h 4p+5p=9h	50/60Hz 3p=9h 4p+5p=6h	50/60Hz 7h	100-300Hz 10h	301-500Hz 2h
			Cat.No.	Cat.No.	Cat.No.	Cat.No.	Cat.No.	Cat.No.
with flange 70 x 70								
16	3	10	613-4TT	613-6TT	613-9TT			
16	5	10	615-4TT	615-9TT	615-6TT			
32	4	10	624-4TT	624-9TT	624-6TT			
32	5	10	625-4TT	625-9TT	625-6TT			



613-4TT

Amp.	Poles	pack unit	110V~	230V~	400V~	500V~	>50-500V~	>50-500V~
			50/60Hz 4h	50/60Hz 3p=6h 4p+5p=9h	50/60Hz 3p=9h 4p+5p=6h	50/60Hz 7h	100-300Hz 10h	301-500Hz 2h
			Cat.No.	Cat.No.	Cat.No.	Cat.No.	Cat.No.	Cat.No.
with flange 60 x 60								
16	3	10	613-4f6	613-6f6	613-9f6	613-7f6	613-10f6	613-2f6
16	4	10	614-4f6	614-9f6	614-6f6	614-7f6	614-10f6	614-2f6
16	5	10	615-4f6	615-9f6	615-6f6	615-7f6	615-10f6	615-2f6



613-6f6

Amp.	Poles	pack unit	110V~	230V~	400V~	500V~	>50-500V~	>50-500V~
			50/60Hz 4h	50/60Hz 3p=6h 4p+5p=9h	50/60Hz 3p=9h 4p+5p=6h	50/60Hz 7h	100-300Hz 10h	301-500Hz 2h
			Cat.No.	Cat.No.	Cat.No.	Cat.No.	Cat.No.	Cat.No.
with flange 56 x 56								
16	3	10	613-4f3	613-6f3	613-9f3	613-7f3	613-10f3	613-2f3
16	4	10	614-4f3	614-9f3	614-6f3	614-7f3	614-10f3	614-2f3



614-6f3

Positioning table (in mm):

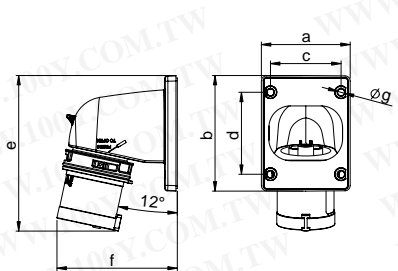
		E1	L2	L3	T	V
16	3	29-31	≥75	40-41	≥4	≥8
16	4	33-35	≥80	46-47	≥5	≥8
16	5	37-39	≥90	52-53	≥7	≥8
32	3	39-41	≥90	53-54	≥7	≥8
32	4	39-41	≥90	53-54	≥7	≥8
32	5	44-46	≥105	59-60	≥8	≥9

For correct use a locking device has to be provided (see illustration).



Flanged plugs

„Twist“ Flanged plug angled

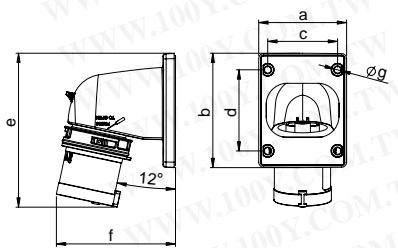


Poles	16 Amp			32 Amp		
	3	4	5	3	4	5
a	66	66	90	90	90	90
b	86	86	100	100	100	100
c	53	53	77	77	77	77
d	61	61	85	85	85	85
e	116	117	153	163	163	164
f	90	93	98	100	100	103
g	5	5	5	5	5	5

Kind of connection:	Screw terminal					
Wire flexible [mm ²]	1-2,5			2,5-6		
solid [mm ²]	1-4			2,5-10		
Contact screws [Ncm]	100 Ncm			110 Ncm		
Weight [g]	129	147	192	203	223	250

- with screw terminals
- housing material: PC/ABS
- contacts: brass
- to order nickel-plated contacts please add a "v" e.g. 77715-6v

IP44 splashproof



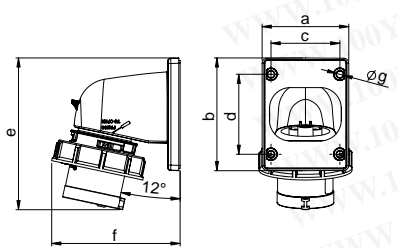
„Turbo Twist“ Flanged plug angled

Poles	16 Amp			32 Amp		
	3	4	5	3	4	5
a	66	66	90	90	90	90
b	86	86	100	100	100	100
c	53	53	77	77	77	77
d	61	61	85	85	85	85
e	116	117	153	163	163	164
f	90	93	98	100	100	103
g	5	5	5	5	5	5

Kind of connection:	Screwless terminal					
Wire flexible [mm ²]	1-2,5			2,5-6		
solid [mm ²]	1-4			2,5-10		
Weight [g]	131	151	196	207	228	260

- screwless connection technology
- housing material: PC/ABS
- contacts: brass
- to order nickel-plated contacts please add a "v" e.g. 77715-6TTv

IP44 splashproof



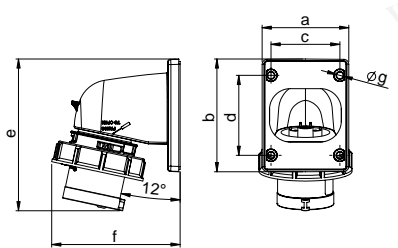
„Twist“ Flanged plug angled

Poles	16 Amp			32 Amp		
	3	4	5	3	4	5
a	66	66	90	90	90	90
b	86	86	100	100	100	100
c	53	53	77	77	77	77
d	61	61	85	85	85	85
e	116	117	153	163	163	164
f	99	103	107	110	110	114
g	5	5	5	5	5	5

Kind of connection:	Screw terminal					
Wire flexible [mm ²]	1-2,5			2,5-6		
solid [mm ²]	1-4			2,5-10		
Contact screws [Ncm]	100 Ncm			110 Ncm		
Weight [g]	152	167	218	235	255	288

- with screw terminals
- housing material: PC/ABS
- contacts: brass
- to order nickel-plated contacts please add a "v" e.g. 777152-6v

IP67 watertight



„Turbo Twist“ Flanged plug angled

Poles	16 Amp			32 Amp		
	3	4	5	3	4	5
a	66	66	90	90	90	90
b	86	86	100	100	100	100
c	53	53	77	77	77	77
d	61	61	85	85	85	85
e	116	117	153	163	163	164
f	99	103	107	110	110	114
g	5	5	5	5	5	5

Kind of connection:	Screwless terminal					
Wire flexible [mm ²]	1-2,5			2,5-6		
solid [mm ²]	1-4			2,5-10		
Weight [g]	155	171	222	239	261	297

- screwless connection technology
- housing material: PC/ABS
- contacts: brass
- to order nickel-plated contacts please add a "v" e.g. 777152-6TTv

IP67 watertight

Amp.	Poles	pack unit	110V~	230V~	400V~	500V~	>50-500V~	>50-500V~
			50/60Hz 4h	50/60Hz 3p=6h 4p+5p=9h	50/60Hz 3p=9h 4p+5p=6h	50/60Hz 7h	100-300Hz 10h	301-500Hz 2h
			Cat.No.	Cat.No.	Cat.No.	Cat.No.	Cat.No.	Cat.No.
16	3	10	77713-4	77713-6	77713-9	77713-7	77713-10	77713-2
16	4	10	77714-4	77714-9	77714-6	77714-7	77714-10	77714-2
16	5	10	77715-4	77715-9	77715-6	77715-7	77715-10	77715-2
32	3	5	77723-4	77723-6	77723-9	77723-7	77723-10	77723-2
32	4	5	77724-4	77724-9	77724-6	77724-7	77724-10	77724-2
32	5	5	77725-4	77725-9	77725-6	77725-7	77725-10	77725-2



77713-6

16	3	10	77713-4TT	77713-6TT	77713-9TT			
16	4	10	77714-4TT	77714-9TT	77714-6TT			
16	5	10	77715-4TT	77715-9TT	77715-6TT			
32	3	5	77723-4TT	77723-6TT	77723-9TT			
32	4	5	77724-4TT	77724-9TT	77724-6TT			
32	5	5	77725-4TT	77725-9TT	77725-6TT			

TURBO
TWIS
click



77713-6TT

16	3	10	777132-4	777132-6	777132-9	777132-7	777132-10	777132-2
16	4	10	777142-4	777142-9	777142-6	777142-7	777142-10	777142-2
16	5	5	777152-4	777152-9	777152-6	777152-7	777152-10	777152-2
32	3	5	777232-4	777232-6	777232-9	777232-7	777232-10	777232-2
32	4	5	777242-4	777242-9	777242-6	777242-7	777242-10	777242-2
32	5	5	777252-4	777252-9	777252-6	777252-7	777252-10	777252-2



777132-6

16	3	10	777132-4TT	777132-6TT	777132-9TT			
16	4	10	777142-4TT	777142-9TT	777142-6TT			
16	5	5	777152-4TT	777152-9TT	777152-6TT			
32	3	5	777232-4TT	777232-6TT	777232-9TT			
32	4	5	777242-4TT	777242-9TT	777242-6TT			
32	5	5	777252-4TT	777252-9TT	777252-6TT			

TURBO
TWIS
click

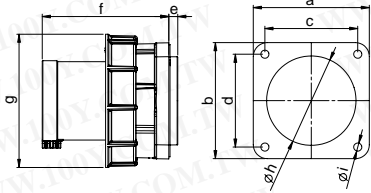


777152-6TT



Flanged plugs

„Power Twist“ Flanged plug straight

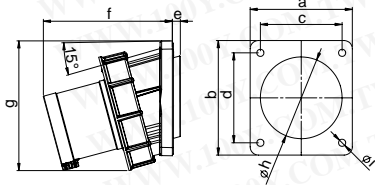


	63 Amp			125 Amp		
	3	4	5	3	4	5
Poles	3	4	5	3	4	5
Flange						
a x b	100	100	100	120	120	120
Fixing center						
c x d	80	80	80	100	100	100
e	8	8	8	13	13	13
f	109	109	109	118	118	118
g	115	115	115	131	131	131
h	77	77	77	95	95	95
i	7	7	7	7	7	7
Kind of connection:	Contact frame with screws					
Wire flexible [mm ²]	6-16			16-50		
solid [mm ²]	6-25			16-70		
Contact screws [Ncm]	200 Ncm			450 Ncm		
Weight [g]	479	531	570	786	891	998

- contact frame with screws
- housing material: PA6
- contacts: nickel-plated contacts, with pilot contact (see page 9)
- for waterproof cover and cable-glands see accessories page 44

IP66/67 watertight
IP44 on request

„Power Twist“ Flanged plug sloping

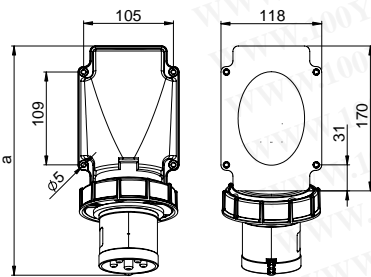


	63 Amp			125 Amp		
	3	4	5	3	4	5
Poles	3	4	5	3	4	5
a	100	100	100	120	120	120
b	112	112	112	130	130	130
c	80	80	80	100	100	100
d	88	88	88	108	108	108
e	8	8	8	8	8	8
f	127	127	127	139	139	139
g	127	127	127	145	145	145
h	80	80	80	100	100	100
i	7	7	7	7	7	7
Kind of connection:	Contact frame with screws					
Wire flexible [mm ²]	6-16			16-50		
solid [mm ²]	6-25			16-70		
Contact screws [Ncm]	200 Ncm			450 Ncm		
Weight [g]	515	566	608	833	942	1044

- contact frame with screws
- housing material: PA6
- contacts: nickel-plated contacts, with pilot contact (see page 9)
- for waterproof cover and cable-glands see accessories page 44

IP66/67 watertight

„Power Twist“ Flanged plug



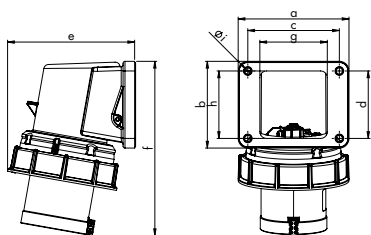
b=height
angle=15°

	63 Amp		
	3	4	5
Poles	3	4	5
a	271	271	271
b	124	124	124
Kind of connection:	Contact frame with screws		
Wire flexible [mm ²]	6-16		
solid [mm ²]	6-25		
Contact screws [Ncm]	200 Ncm		
Weight [g]	653	704	746

- contact frame with screws
- housing material: PC/ABS
- contacts: nickel-plated contacts, with pilot contact (see page 9)
- for waterproof cover and cable-glands see accessories page 44
- rear entry
- incl. flange gasket

IP66/67 watertight

„Power Twist“ Flanged plug compact



	63 Amp		
	3	4	5
Poles	3	4	5
a	116	116	116
b	91	91	91
c	95	95	95
d	70	70	70
e	132	132	132
f	181	181	181
g	70	70	70
h	70	70	70
Øi	6,5	6,5	6,5
Kind of connection:	Contact frame with screws		
Wire flexible [mm ²]	6-16		
solid [mm ²]	6-25		
Contact screws [Ncm]	200 Ncm		
Weight [g]	547	598	640

- contact frame with screws
- housing material: PA6
- contacts: nickel-plated contacts, with pilot contact (see page 9)
- for waterproof cover and cable-glands see accessories page 44
- rear entry
- incl. flange gasket

IP66/67 watertight

110V~

50/60Hz
4h

Cat.No.

230V~

50/60Hz
3p=6h
4p+5p=9h

Cat.No.

400V~

50/60Hz
3p=9h
4p+5p=6h

Cat.No.

500V~

50/60Hz
7h

Cat.No.

>50-500V~

100-300Hz
10h

Cat.No.

>50-500V~

301-500Hz
2h

Cat.No.

Amp. Poles pack unit

with flange 100 x 100

63	3	2	633-4	633-6	633-9	633-7	633-10	633-2
63	4	2	634-4	634-9	634-6	634-7	634-10	634-2
63	5	2	635-4	635-9	635-6	635-7	635-10	635-2

with flange 120 x 120

125	3	2	643-4	643-6	643-9	643-7	643-10	643-2
125	4	2	644-4	644-9	644-6	644-7	644-10	644-2
125	5	2	645-4	645-9	645-6	645-7	645-10	645-2



635-6

with flange 100 x 112

63	3	2	733-4	733-6	733-9	733-7	733-10	733-2
63	4	2	734-4	734-9	734-6	734-7	734-10	734-2
63	5	2	735-4	735-9	735-6	735-7	735-10	735-2

with flange 120 x 130

125	3	2	743-4	743-6	743-9	743-7	743-10	743-2
125	4	2	744-4	744-9	744-6	744-7	744-10	744-2
125	5	2	745-4	745-9	745-6	745-7	745-10	745-2



735-6

63	3	2	77733-4	77733-6	77733-9	77733-7	77733-10	77733-2
63	4	2	77734-4	77734-9	77734-6	77734-7	77734-10	77734-2
63	5	2	77735-4	77735-9	77735-6	77735-7	77735-10	77735-2



77735-6

63	3	2	77733-4k	77733-6k	77733-9k	77733-7k	77733-10k	77733-2k
63	4	2	77734-4k	77734-9k	77734-6k	77734-7k	77734-10k	77734-2k
63	5	2	77735-4k	77735-9k	77735-6k	77735-7k	77735-10k	77735-2k



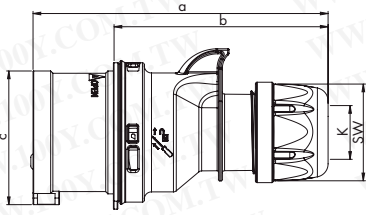
77735-6k

new!



Phase inverters

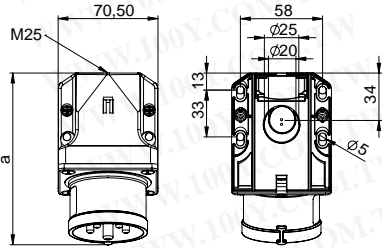
„Shark“ Phase inverter



	16 Amp		32 Amp	
Poles	4	5	4	5
a	128	134	150	155
b	92	98	104	109
c	53	61	63	70
K_cable Ø [mm]	6-15	8-16	11,5-20	11,5-22
Kind of connection:	Screw terminal			
Wire flexible class 5 or 6 [mm²]	1-2,5		2,5-6	
Contact screws [Ncm]	100 Ncm		110 Ncm	
SW	42	42	50	50
Weight [g]	131	154	204	236

- with screw terminals
- housing material: PA6
- contacts: nickel-plated contacts

IP44 splashproof
IP67 watertight



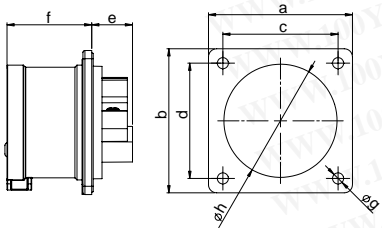
Phase inverter - Wall mounted plug

	16 Amp		32 Amp	
Poles	5		5	
a	122		132	
b	79		85	
M	25		25	
Kind of connection:	Screw terminal			
Wire flexible class 5 or 6 [mm²]	1-2,5		2,5-6	
Contact screws [Ncm]	100 Ncm		110 Ncm	
Weight [g]	205		253	

- with screw terminals
- housing material: PA6
- contacts: nickel-plated contacts
- top and rear entry
- incl. cable gland

IP44 splashproof

b=height
angle=15°

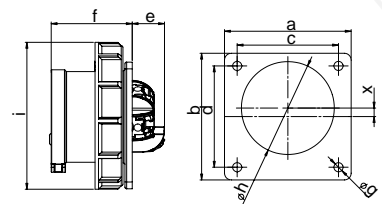


Phase inverter - Flanged plug straight

	16 Amp		32 Amp	
Poles	5		5	
Flange				
a x b	70		70	
Fixing center				
c x d	56		56	
e	20		21	
f	42		51	
g	5,5		5,5	
h	55		55	
Kind of connection:	Screw terminal			
Wire flexible class 5 or 6 [mm²]	1-2,5		2,5-6	
Contact screws [Ncm]	100 Ncm		110 Ncm	
Weight [g]	118		165	

- with screw terminals
- housing material: PA6
- contacts: nickel-plated contacts
- According to EN 60309:
For correct use a locking device has to be provided (see page 34)

IP44 splashproof



Phase inverter - Flanged plug straight

	16 Amp		32 Amp	
Poles	5		5	
Flange				
a x b	75		75	
Fixing center				
c x d	60		60	
e	13		14	
f	48		58	
g	5,5		5,5	
h	55		55	
h	87		100	
x	5,05		0	
Kind of connection:	Screw terminal			
Wire flexible class 5 or 6 [mm²]	1-2,5		2,5-6	
Contact screws [Ncm]	100 Ncm		110 Ncm	
Weight [g]	145		208	

- with screw terminals
- housing material: PA6
- contacts: nickel-plated contacts
- According to EN 60309:
For correct use a locking device has to be provided (see page 34)
- for 16A 3p and 16A 5p the plug is placed off centered for keeping the standards

IP67 watertight

230V~

50/60Hz
3p=6h
4p+5p=9h

400V~

50/60Hz
3p=9h
4p+5p=6h

Amp.
Poles
pack unit

Cat.No.

Cat.No.

protection degree

16	4	10
16	4	10
16	5	10
16	5	10
32	4	10
32	4	10
32	5	10
32	5	10

7014-9	7014-6	IP44
70142-9	70142-6	IP67
	7015-6	IP44
	70152-6	IP67
7024-9	7024-6	IP44
70242-9	70242-6	IP67
	7025-6	IP44
	70252-6	IP67



7015-6

16	5	10
16	5	10
32	5	10
32	5	10

7715-6	IP44
7715-6d	IP44
7725-6	IP44
7725-6d	IP44

with cap

with cap



7715-6

with flange 70 x 70		
16	5	10
32	5	10

8615-6	IP44
8625-6	IP44



8615-6

with flange 75 x 75		
16	5	10
32	5	10

86152-6	IP67
86252-6	IP67

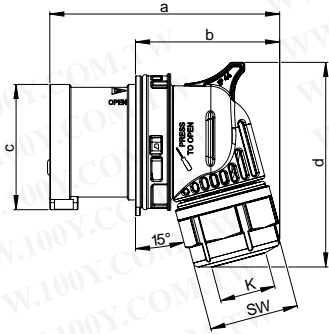


86152-6



Phase inverters

„Twist“ Phase inverter - Angled plug

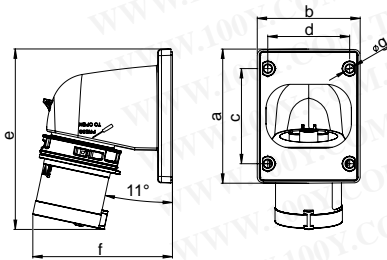


	16 Amp		32 Amp	
Poles	4	5	5	5
a	98	108	135	135
b	62	71	90	90
c	53	61	70	70
d	87	99	114	114
e [°]	15	20	25	25
K_cable Ø [mm]	6-15	8-16		11,5-22
Kind of connection:	Screw terminal			
Wire flexible class 5 or 6 [mm²]	1-2,5		2,5-6	
Contact screws [Ncm]	100 Ncm		110Ncm	
SW	38	42	50	50
Weight [g]	133	158		238

- with screw terminals
- housing material:
16/4: PA6
16/5 32/5: PC/ABS
- contacts: nickel-plated contacts

IP44 splashproof
IP67 watertight

„Twist“ Phase inverter - Flanged plug angled



	16 Amp		32 Amp	
Poles	4	5	4	5
a	66	90	90	90
b	86	100	100	100
c	53	77	77	77
d	61	85	85	85
e	117	153	163	164
f	93	98	100	103
g	5	5	5	5
Kind of connection:	Screw terminal			
Wire flexible class 5 or 6 [mm²]	1-2,5		2,5-6	
Contact screws [Ncm]	100 Ncm		110 Ncm	
Weight [g]	147	192	223	250

- with screw terminals
- housing material: PC/ABS
- contacts: nickel-plated contacts

IP44 splashproof
IP67 watertight

230V~

50/60Hz
3p=6h
4p+5p=9h

400V~

50/60Hz
3p=9h
4p+5p=6h

Amp.
Poles
pack unit

Cat.No.

Cat.No.

protection degree

Amp.	Poles	pack unit	230V~ Cat.No.	400V~ Cat.No.	protection degree
16	4	10	7414-9	7414-6	IP44
16	4	10	74142-9	74142-6	IP67
16	5	10		7415-6	IP44
16	5	10		74152-6	IP67
32	5	10		7425-6	IP44
32	5	10		74252-6	IP67



7414-6



74142-6

Amp.	Poles	pack unit	230V~ Cat.No.	400V~ Cat.No.	protection degree
16	4	10	77814-9	77814-6	IP44
16	4	10	778142-9	778142-6	IP67
16	5	5		77815-6	IP44
16	5	5		778152-6	IP67
32	4	5	77824-9	77824-6	IP44
32	4	5	778242-9	778242-6	IP67
32	5	5		77825-6	IP44
32	5	5		778252-6	IP67

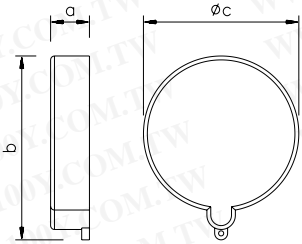


77814-6



Accessories

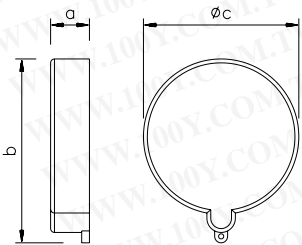
Cap 16 and 32A



Poles	16 Amp			32 Amp		
	3	4	5	3	4	5
a	15	15	15	15	15	15
b	56	63	71	71	71	79
c	48	54	61	61	61	67
Weight [g]	10	12	14	14	14	16

- for plugs and appliance plugs to protect contacts against dust
- material: TPE/PP

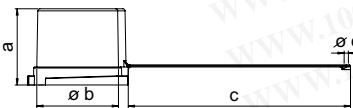
Cap 63 and 125A



Poles	63 Amp			125 Amp		
	3	4	5	3	4	5
a	21	21	21	21	21	21
b	82	82	82	93	93	93
c	73	73	73	86	86	86
Weight [g]	21	21	21	25	25	25

- for plugs and appliance plugs to protect contacts against dust
- material: TPE/PP

Water protection cap 63 and 125A



Poles	63 Amp			125 Amp		
	3	4	5	3	4	5
a	72	72	72	82	82	82
b	78	78	78	91	91	91
c	211	211	211	205	205	205
d	4	4	4	5	5	5
Weight [g]	75	75	75	98	98	98

- for plugs and appliance plugs
- material 63A: Polypropylen
- material 125A: Polyamide PA6

IP67 watertight

Amp.	Poles	pack unit	Cat.No.	
16	3	}	ts613g	
16	4		ts614g	
16	5		ts615g	
32	3		ts623g	
32	4		}	ts625g
32	5			



63	3	}	ts635g
63	4		
63	5		
125	3	}	ts645g
125	4		
125	5		



63	3	}	ts7632g
63	4		
63	5		
125	3	}	ts1252g
125	4		
125	5		



Accessories

Note: For entries without threads, marked by „Ø“, the appropriate lock nuts should be used!

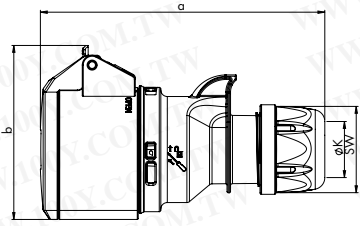
IP68	M25x1,5	screw fitting - black	(cable diameter 13-18mm)	23251515140
IP68	M32x1,5	screw fitting - black	(cable diameter 18-25mm)	23321515200
IP68	M40x1,5	screw fitting - black	(cable diameter 22-32mm)	23401518260
IP68	M50x1,5	screw fitting - black	(cable diameter 32-38mm)	23501518310
IP68	M63x1,5	screw fitting - black	(cable diameter 34-44mm)	23631518350

Lock nut	M40x1,5	Nickel-coated brass	264015009
Lock nut	M50x1,5	Nickel-coated brass	265015009



Connectors

„Shark“ Connector

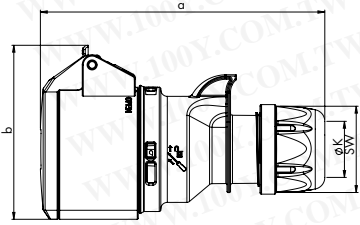


Poles	16 Amp			32 Amp		
	3	4	5	3	4	5
a	133	138	145	161	161	168
b	76	80	89	91	94	100
K_cable Ø [mm]	6-15	6-15	8-16	11,5-20	11,5-20	11,5-22
Kind of connection:		Screw terminal				
Wire flexible [mm ²]	1-2,5			2,5-6		
Contact screws [Ncm]	100 Ncm			110 Ncm		
SW	42	42	42	50	50	50
Weight [g]	142	161	189	229	244	294

- with screw terminals
- housing material: PA6
- contacts: brass
- to order nickel-plated contacts please add a "v" e.g. 215-6v

IP44 splashproof

„Turbo Shark“ Connector

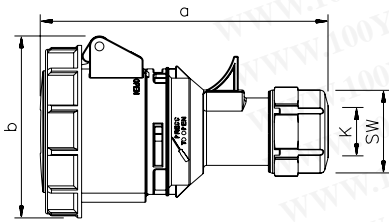


Poles	16 Amp			32 Amp		
	3	4	5	3	4	5
a	133	138	145	161	161	168
b	76	82	89	94	94	100
K_cable Ø [mm]	6-15	6-15	8-16	11,5-20	11,5-20	11,5-22
Kind of connection:		Screwless terminal				
Wire flexible [mm ²]	1-2,5			2,5-6		
SW	42	42	42	50	50	50
Weight [g]	144	162	193	228	244	295

- screwless connection technology
- housing material: PA6
- contacts: brass
- to order nickel-plated contacts please add a "v" e.g. 215-6TTv

IP44 splashproof

„Twist“ Connector

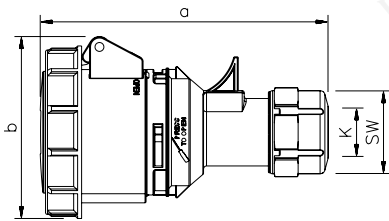


Poles	16 Amp			32 Amp		
	3	4	5	3	4	5
a	133	139	145	162	162	168
b	78	84	92	96	96	102
K_cable Ø [mm]	6-15	6-15	8-16	11,5-20	11,5-20	11,5-22
Kind of connection:		Screw terminal				
Wire flexible [mm ²]	1-2,5			2,5-6		
Contact screws [Ncm]	100 Ncm			110 Ncm		
SW	38	38	42	50	50	50
Weight [g]	164	187	212	266	285	319

- with screw terminals
- housing material: PA6
- contacts: brass
- to order nickel-plated contacts please add a "v" e.g. 2152-6v

IP67 watertight

„Turbo Twist“ Connector



Poles	16 Amp			32 Amp		
	3	4	5	3	4	5
a	133	139	145	162	162	168
b	78	84	92	96	96	102
K_cable Ø [mm]	6-15	6-15	8-16	11,5-20	11,5-20	11,5-22
Kind of connection:		Screwless terminal				
Wire flexible [mm ²]	1-2,5			2,5-6		
SW	38	38	42	50	50	50
Weight [g]	165	186	221	271	287	325

- screwless connection technology
- housing material: PA6
- contacts: brass
- to order nickel-plated contacts please add a "v" e.g. 2152-6TTv

IP67 watertight

110V~

50/60Hz
4h

230V~

50/60Hz
3p=6h
4p+5p=9h

400V~

50/60Hz
3p=9h
4p+5p=6h

500V~

50/60Hz
7h

>50-500V~

100-300Hz
10h

>50-500V~

301-500Hz
2h

Amp.
Poles
pack unit

Cat.No.

Cat.No.

Cat.No.

Cat.No.

Cat.No.

Cat.No.

16 3 10
16 4 10
16 5 10

32 3 10
32 4 10
32 5 10

213-4
214-4
215-4

223-4
224-4
225-4

213-6
214-9
215-9

223-6
224-9
225-9

213-9
214-6
215-6

223-9
224-6
225-6

213-7
214-7
215-7

223-7
224-7
225-7

213-10
214-10
215-10

223-10
224-10
225-10

213-2
214-2
215-2

223-2
224-2
225-2



215-6

16 3 10
16 4 10
16 5 10

32 3 10
32 4 10
32 5 10

213-4TT
214-4TT
215-4TT

223-4TT
224-4TT
225-4TT

213-6TT
214-9TT
215-9TT

223-6TT
224-9TT
225-9TT

213-9TT
214-6TT
215-6TT

223-9TT
224-6TT
225-6TT

TURBO TWISlick



215-6TT

16 3 10
16 4 10
16 5 10

32 3 10
32 4 10
32 5 10

2132-4
2142-4
2152-4

2232-4
2242-4
2252-4

2132-6
2142-9
2152-9

2232-6
2242-9
2252-9

2132-9
2142-6
2152-6

2232-9
2242-6
2252-6

2132-7
2142-7
2152-7

2232-7
2242-7
2252-7

2132-10
2142-10
2152-10

2232-10
2242-10
2252-10

2132-2
2142-2
2152-2

2232-2
2242-2
2252-2



2152-6

16 3 10
16 4 10
16 5 10

32 3 10
32 4 10
32 5 10

2132-4TT
2142-4TT
2152-4TT

2232-4TT
2242-4TT
2252-4TT

2132-6TT
2142-9TT
2152-9TT

2232-6TT
2242-9TT
2252-9TT

2132-9TT
2142-6TT
2152-6TT

2232-9TT
2242-6TT
2252-6TT

TURBO TWISlick

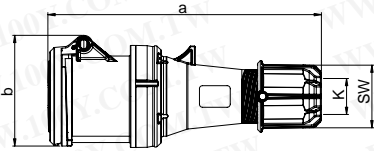


2132-6TT



Connectors

„Power Twist“ Connector

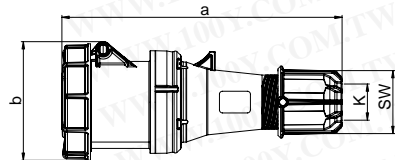


	63 Amp		
Poles	3	4	5
a	269	269	269
b	107	107	107
K_cable Ø [mm]	14,5-36	14,5-36	14,5-36
Kind of connection:	Contact frame with screws		
Wire flexible [mm ²]	6-16		
Contact screws [Ncm]	200 Ncm		
SW	61	61	61
Weight [g]	624	664	720

- contact frame with screws
- housing material: PA6
- contacts: brass with lamellar contact CuBe
- to order with pilot contact please add a „5“ e.g. 23351-6 (see page 9)
- to order with pilot contact system (PCS) please add a „6“ e.g. 23361-6 (see page 10)

IP44 splashproof

„Power Twist“ Connector

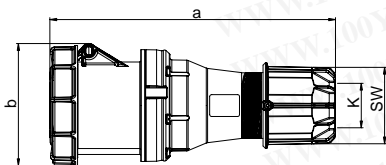


	63 Amp		
Pole	3	4	5
a	269	269	269
b	114	114	114
K_cable Ø [mm]	14,5-36	14,5-36	14,5-36
Kind of connection:	Contact frame with screws		
Wire flexible [mm ²]	6-16		
Contact screws [Ncm]	200 Ncm		
SW	61	61	61
Weight [g]	669	710	768

- contact frame with screws
- housing material: PA6
- contacts: brass with lamellar contact CuBe
- to order with pilot contact please add a „5“ e.g. 2335-6 (see page 9)
- to order with pilot contact system (PCS) please add a „6“ e.g. 2336-6 (see page 10)

IP66/67 watertight

„Power Twist“ Connector



	125 Amp		
Pole	3	4	5
a	287	287	287
b	124	124	124
K_cable Ø [mm]	22,5-50	22,5-50	22,5-50
Kind of connection:	Contact frame with screws		
Wire flexible [mm ²]	16-50		
Contact screws [Ncm]	450 Ncm		
SW	81	81	81
Weight [g]	1060	1167	1266

- contact frame with screws
- housing material: PA6
- contacts: brass with lamellar contact CuBe
- to order with pilot contact please add a „5“ e.g. 2435-6 (see page 9)
- to order with pilot contact system (PCS) please add a „6“ e.g. 2436-6 (see page 10)

IP66/67 watertight

Amp.	Poles	pack unit	110V~	230V~	400V~	500V~	>50-500V~	>50-500V~
			50/60Hz 4h	50/60Hz 3p=6h 4p+5p=9h	50/60Hz 3p=9h 4p+5p=6h	50/60Hz 7h	100-300Hz 10h	301-500Hz 2h
			Cat.No.	Cat.No.	Cat.No.	Cat.No.	Cat.No.	Cat.No.
63	3	2	2331-4	2331-6	2331-9	2331-7	2331-10	2331-2
63	4	2	2341-4	2341-9	2341-6	2341-7	2341-10	2341-2
63	5	2	2351-4	2351-9	2351-6	2351-7	2351-10	2351-2



2351-6

63	3	2	233-4	233-6	233-9	233-7	233-10	233-2
63	4	2	234-4	234-9	234-6	234-7	234-10	234-2
63	5	2	235-4	235-9	235-6	235-7	235-10	235-2



235-6

125	3	2	243-4	243-6	243-9	243-7	243-10	243-2
125	4	2	244-4	244-9	244-6	244-7	244-10	244-2
125	5	2	245-4	245-9	245-6	245-7	245-10	245-2



245-6

勝特力材料 886-3-5753170
 勝特力电子(上海) 86-21-34970699
 勝特力电子(深圳) 86-755-83298787
[Http://www.100y.com.tw](http://www.100y.com.tw)

