



勝特力電材超市-龍山店 886-3-5773766
勝特力電材超市-光復店 886-3-5729570
勝特力電子(上海) 86-21-34970699
勝特力電子(深圳) 86-755-83298787
<http://www.100y.com.tw>

LPT Connector Series

The new LPT Series from Amphenol Industrial Operations (AIO) is based on the MIL-C-26482 Series I. Amphenol's original PT Series is a cost effective metal bayonet connector versed in all major global signal application markets.

The LPT Series is an evolution of AIO's well-known PT connector, with the same 26482 Series I industry standard mating compatibility, ability to accept wire gauges from 22AWG/0.34mm² to 12AWG/3.5mm², and an IP67 rating. Available in several styles, with varying design characteristics and custom options to meet cost considerations and provide maximum design flexibility.

The LPT Series is the ideal choice for signal applications and industrial installations around the world.

Features:

- Aluminum shell, light and reliable
- Multiple shell plating options, including Gray ZnNi which is effective up to 500 hours of salt spray
- Standard PT shell and coupling nut, intermateable with PT Series
- 3-tine Stamped & Formed crimp contacts
- Accepts wire gauges from 22AWG/0.34mm² to 12AWG/3.5mm²
- Quick positive bayonet coupling and 5 key/keyway mating
- High Shock and High Vibration capabilities
- IP67 Rating (mated)
- 500 mating cycles
- UL94 V-0 (Self-Extinguishing)
- Wide Operating Temperature Range (-40°C to 125°C)

Specifications:

Electrical Characteristics

- 5 milliohms max
- Accepts wire gauges from 22AWG/0.34mm² to 12AWG/3.5mm²

Test Current	20# contact 7.5A	16# contact 13A	12# contact 23A
Recommended operating AC voltage	I# 250V	II# 500V	
Test voltage AC, 60 Hz	I# 1500V	II# 2300V	

Mechanical Characteristics

- Standard PT shell and coupling nut, intermateable with PT Series
- Accepts wire gauges from 22AWG/0.34mm² to 12AWG/3.5mm²
- Quick positive bayonet coupling
- 5 key/keyway mating
- Wide Operating Temperature Range (-40°C to 125°C)
- UL94 V-0 (Self-Extinguishing)

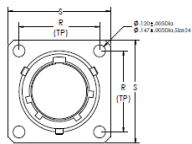


Environmental Protection

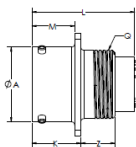
- IP67 rating (mated)

*Contacts sold separately. Please refer to LPT catalog (IC-7)

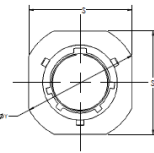
How to Order										
1	2	3	4	5	6	7	8	9	10	
Product Line	Shell Style	Service Classes	Shell Size	Insert Arrangement	Gender	Insert Rotation	Shell Plating	Variations		
LPT	00: Wall Mount Receptacle	A: General Duty	8	4	P: Pin	W	(023): Nickel	(SR): Strain relief clamp	Less contacts	
	01: Inline Receptacle	SE: Open Wire Sealing	10	2,5,6	S: Socket	X	(027): Black Zinc (conductive)	Based on application		
	02: Box Mount Receptacle	G: Heat shrink boot adapter	12	3,4,8,10		Y	(025): Black Zinc (non-conductive)			
	07: Jam Nut Receptacle	SE(SR): Strain relief clamp	14	4,5,8,12,15,19,22,AA		Z	(072): Gray ZINi			
	06: Straight Plug	PG: Cable gland	16	8,26			(005B): Black Anodized			
			18	5,						
			20	16,41						
			22	25,36,55						
			24	31,61						



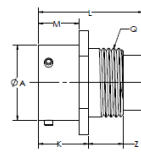
00: Wall Mount Receptacle



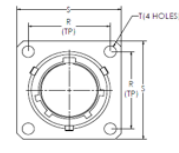
01: Inline Receptacle



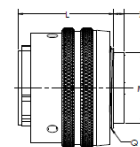
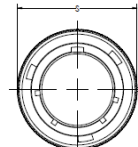
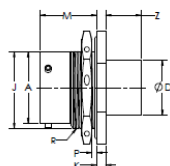
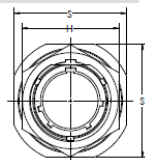
02: Box Mount Receptacle



07: Jam Nut Receptacle



06: Straight Plug



Notice: Specifications are subject to change without notice. Contact your nearest Amphenol Corporation Sales Office for the latest specifications. All statements, information and data given herein are believed to be accurate and reliable but are presented without guarantee, warranty, or responsibility of any kind, expressed or implied. Statements of suggestions concerning possible use of our products are made without representation or warranty that any such use is free of patent infringement and are not recommendations to infringe any patent. The user should assume that all safety measures are indicated or that other measures may not be required. Specifications are typical and may not apply to all connectors.

For further information on your individual application requirements, contact: Amphenol Corporation

North America:
Amphenol Industrial Operations
180 N. Freeport Drive, Plant 4
Nogales, AZ 85621
Tel: (888) 364-9011
Fax: (520) 285-5134

Europe:
Amphenol Industrial Operations Europe
Via Barbaiana 5
1-20020 Lainate (MI) Italy
Tel: +39 02 93254.204
Fax: +39 02 93254.444

Middle East:
Amphenol Middle East Enterprises FZE
Office C-37 PO Box 21107
Ajman Free Zone, UAE
Tel: +9 716-7422494
Fax: +9 716-7422941

Asia:
Amphenol Technology (Zhuhai) Co., Ltd.
No. 63 Xing Han Road, San Zao Town
Jin Wan District, Zhuhai City, China 519040
Tel: +86 756-3989760
Fax: +86 756-3989768

Email: tech@amphenol-aio.com

Email: info@amphenol-aio.com

Email: jhussain@amphenol-industrial.com

Email: enquiry@amphenol-aio.com

Mouser Electronics

Authorized Distributor

Click to View Pricing, Inventory, Delivery & Lifecycle Information:

Amphenol:

[LPT02SE-10-6P\(023\)\(LC\)](#) [LPT02SE-10-6P\(027\)\(LC\)](#) [LPT02SE-10-6P\(072\)\(LC\)](#) [LPT02SE-12-10P\(023\)\(LC\)](#)
[LPT02SE-12-10P\(027\)\(LC\)](#) [LPT02SE-12-10P\(072\)\(LC\)](#) [LPT06SE-10-6S\(027\)\(LC\)](#) [LPT06SE-10-6S\(072\)\(LC\)](#)
[LPT06SE-12-10S\(023\)\(LC\)](#) [LPT06SE-12-10S\(027\)\(LC\)](#) [LPT06SE-12-10S\(072\)\(LC\)](#) [LPT06SE-12-4S\(023\)\(LC\)](#)
[LPT02SE-20-41P\(027\)\(LC\)](#) [LPT02SE-20-41P\(072\)\(LC\)](#) [LPT02SE-8-4P\(023\)\(LC\)](#) [LPT02SE-8-4P\(027\)\(LC\)](#) [LPT02SE-](#)
[8-4P\(072\)\(LC\)](#) [LPT06SE-10-6S\(023\)\(LC\)](#) [LPT02SE-18-05P\(027\)\(LC\)](#) [LPT02SE-18-05P\(072\)\(LC\)](#) [LPT02SE-18-](#)
[32P\(023\)\(LC\)](#) [LPT02SE-18-32P\(027\)\(LC\)](#) [LPT02SE-18-32P\(072\)\(LC\)](#) [LPT02SE-20-41P\(023\)\(LC\)](#) [LPT02SE-14-](#)
[19P\(027\)\(LC\)](#) [LPT02SE-14-19P\(072\)\(LC\)](#) [LPT02SE-16-26P\(023\)\(LC\)](#) [LPT02SE-16-26P\(027\)\(LC\)](#) [LPT02SE-16-](#)
[26P\(072\)\(LC\)](#) [LPT02SE-18-05P\(023\)\(LC\)](#) [LPT02SE-12-8P\(023\)\(LC\)](#) [LPT02SE-12-8P\(027\)\(LC\)](#) [LPT02SE-12-](#)
[8P\(072\)\(LC\)](#) [LPT02SE-14-19P\(023\)\(LC\)](#) [LPT06SE-8-4S\(027\)\(LC\)](#) [LPT06SE-8-4S\(072\)\(LC\)](#) [LPT06SE-18-](#)
[32S\(027\)\(LC\)](#) [LPT06SE-18-32S\(072\)\(LC\)](#) [LPT06SE-20-41S\(023\)\(LC\)](#) [LPT06SE-20-41S\(027\)\(LC\)](#) [LPT06SE-20-](#)
[41S\(072\)\(LC\)](#) [LPT06SE-8-4S\(023\)\(LC\)](#) [LPT06SE-16-26S\(027\)\(LC\)](#) [LPT06SE-16-26S\(072\)\(LC\)](#) [LPT06SE-18-](#)
[05S\(023\)\(LC\)](#) [LPT06SE-18-05S\(027\)\(LC\)](#) [LPT06SE-18-05S\(072\)\(LC\)](#) [LPT06SE-18-32S\(023\)\(LC\)](#) [LPT06SE-12-](#)
[8S\(027\)\(LC\)](#) [LPT06SE-12-8S\(072\)\(LC\)](#) [LPT06SE-14-19S\(023\)\(LC\)](#) [LPT06SE-14-19S\(027\)\(LC\)](#) [LPT06SE-14-](#)
[19S\(072\)\(LC\)](#) [LPT06SE-16-26S\(023\)\(LC\)](#) [LPT02SE-12-4P\(023\)\(LC\)](#) [LPT02SE-12-4P\(027\)\(LC\)](#) [LPT02SE-12-](#)
[4P\(072\)\(LC\)](#) [LPT06SE-12-4S\(027\)\(LC\)](#) [LPT06SE-12-4S\(072\)\(LC\)](#) [LPT06SE-12-8S\(023\)\(LC\)](#)