

## Han E 16 Pos. M Insert Screw

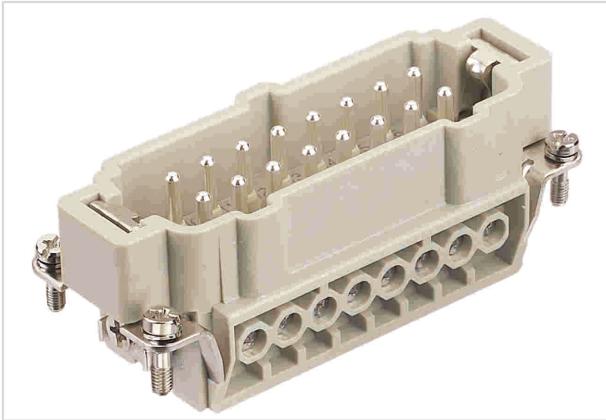


Image is for illustration purposes only. Please refer to product description.

|                    |   |
|--------------------|---|
| Part number        | 09 33 016 2601  |
| Specification      | Han E 16 Pos. M Insert Screw  |
| HARTING eCatalogue | <a href="https://b2b.harting.com/09330162601">https://b2b.harting.com/09330162601</a> |

### Identification

|          |                    |
|----------|--------------------|
| Category | Inserts            |
| Series   | Han E <sup>®</sup> |

### Version

|                      |                   |
|----------------------|-------------------|
| Termination method   | Screw termination |
| Gender               | Male              |
| Size                 | 16 B              |
| With wire protection | Yes               |
| Number of contacts   | 16                |
| PE contact           | Yes               |

### Technical characteristics

|                           |                              |
|---------------------------|------------------------------|
| Conductor cross-section   | 0.75 ... 2.5 mm <sup>2</sup> |
| Conductor cross-section   | AWG 18 ... AWG 14            |
| Rated current             | 16 A                         |
| Rated voltage             | 500 V                        |
| Rated impulse voltage     | 6 kV                         |
| Pollution degree          | 3                            |
| Rated voltage acc. to UL  | 600 V                        |
| Rated voltage acc. to CSA | 600 V                        |
| Insulation resistance     | >10 <sup>10</sup> Ω          |
| Contact resistance        | ≤1 mΩ                        |
| Stripping length          | 7.5 mm                       |



Pushing Performance

## Technical characteristics

|                      |                 |
|----------------------|-----------------|
| Tightening torque    | 0.5 Nm          |
| Limiting temperature | -40 ... +125 °C |
| Mating cycles        | ≥500            |

## Material properties

|   |  |
|---|--|
| Material (insert)                         | Polycarbonate (PC)                                     |
| Colour (insert)                           | RAL 7032 (pebble grey)                                 |
| Material (contacts)                       | Copper alloy   |
| Surface (contacts)                        | Silver plated  |
| Material flammability class acc. to UL 94 | V-0  |
| RoHS                                      | compliant with exemption                               |
| RoHS exemptions                           | 6(c): Copper alloy containing up to 4 % lead by weight |
| ELV status                                | compliant with exemption                               |
| China RoHS                                | 50   |
| REACH Annex XVII substances               | No   |
| REACH ANNEX XIV substances                | No   |
| REACH SVHC substances                     | Yes  |
| REACH SVHC substances                     | Lead   |
| ECHA SCIP number                          | 5dbb3851-b94e-4e88-97a1-571845975242                   |
| California Proposition 65 substances      | Yes  |
| California Proposition 65 substances      | Nickel<br>Lead   |

## Specifications and approvals

|                |   |
|----------------|---|
| Specifications | EN 60664-1<br>IEC 61984   |
| Approvals      | DNV GL  |
| UL / CSA       | UL 1977 ECBT2.E235076<br>UL 2237 PVVA2.E318390<br>CSA-C22.2 No. 182.3 PVVA8.E318390 |

## Commercial data

|                   |         |
|-------------------|---------|
| Packaging size    | 1       |
| Net weight        | 83.32 g |
| Country of origin | Germany |



Pushing Performance

## Commercial data

European customs tariff number 85366990

eCl@ss 27440205 Contact insert for industrial connectors

# Mouser Electronics

Authorized Distributor

Click to View Pricing, Inventory, Delivery & Lifecycle Information:

[HARTING:](#)

[09330162601](#)