

勝特力材料 886-3-5753170
 勝特力电子(上海) 86-21-34970699
 勝特力电子(深圳) 86-755-83298787
 Http://www.100y.com.tw

WPS3102A

RECEPTACLE



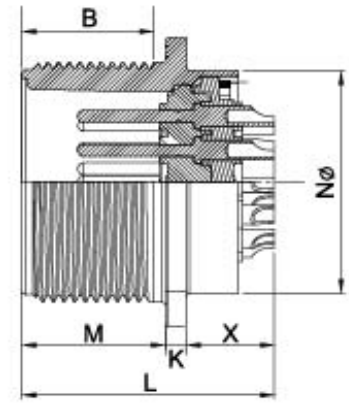
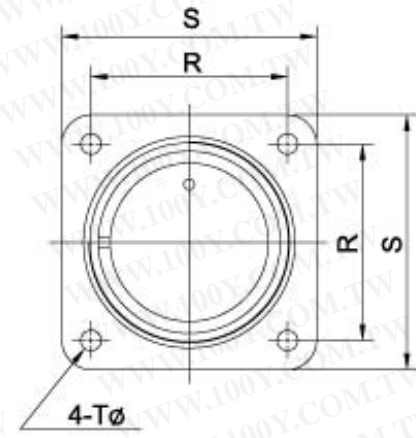
GASKET



PIN PLUG



SOCKET



Shell size	Coupling Threads	Length of the effective portion of the thread over B	Thickness of the assembly rim under K	Length L	Length of assembly rim $M \begin{smallmatrix} +0.79 \\ -0 \end{smallmatrix}$	Outer radius of the terminal $N \begin{smallmatrix} +0 \\ -0.13 \end{smallmatrix}$	Position of the holes reserved for assembly $R \pm 0.13$	Length of the protruded sides $S \pm 0.79$	Hole diameter of the assembly holes $T \begin{smallmatrix} +0.25 \\ -0.13 \end{smallmatrix}$
10SL	5/8-24UNEF-2A	9.50	2.1	23.4	14.60	15.80	18.26	25.40	3.10
12S	3/4-20UNEF-2A	9.52	2.4	24.3	14.27	17.46	20.62	27.79	3.05
14S	7/8-20UNEF-2A	9.52	2.4	24.3	14.27	19.05	23.01	30.18	3.05
16S	1-20UNEF-2A	9.52	2.4	24.3	14.27	22.22	24.61	32.54	3.05
16	1-20UNEF-2A	15.88	2.4	29.1	19.05	22.22	24.61	32.54	3.05
18	1-1/8-18UNEF-2A	15.88	3.0	28.6	19.05	25.40	26.97	34.92	3.05
20	1-1/4-18UNEF-2A	15.88	3.0	29.4	19.05	29.50	29.36	38.10	3.05
22	1-3/8-18UNEF-2A	15.88	3.0	29.4	19.05	31.80	31.75	41.28	3.05
24	1-1/2-18UNEF-2A	15.88	3.0	33.4	20.62	35.10	34.92	44.45	3.73
28	1-3/4-18UNS-2A	15.88	3.0	33.4	20.62	41.58	39.67	50.80	3.73
32	2-18UNS-2A	15.88	4.3	33.4	22.22	48.26	44.45	57.15	4.39
36	2-1/4-16UN-2A	15.88	4.3	33.4	22.22	53.97	49.23	63.50	4.39
48	3-16UN-2A	15.88	4.3	33.2	22.22	77.90	66.68	82.55	4.39

PS :Shell size and insert arrangement please refer to page 2 3