



Push Pull locking



IP65 in mated condition



D-shape metal shell



Closed shielding

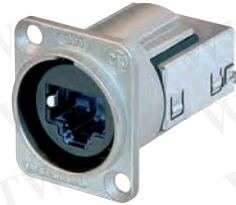
CAT6 Patch Cable



NKE6S-*

- CAT6 compliant - data rate up to 10 GBit/s
- Dust and water resistant according IP65 in mated condition
- Push Pull mating design provides secure locking system
- Shielded system - high noise immunity and EMI protection
- IDC contacts offer gas-tight termination
- Ready made patch cables with rugged diecast cable carrier and unique chuck-type strain relief

CAT6 Receptacles



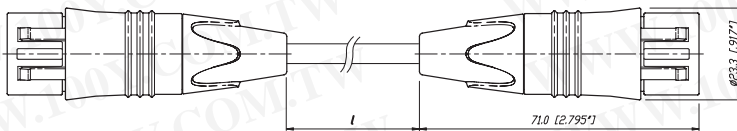
NE8FDY-C6



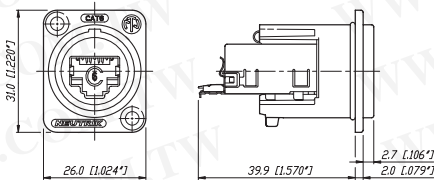
NE8FDY-C6-B

勝特力材料 886-3-5753170
 勝特力电子(上海) 86-21-34970699
 勝特力电子(深圳) 86-755-83298787
[Http://www.100y.com.tw](http://www.100y.com.tw)

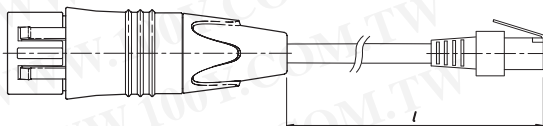
NKE6S-*



NE8FDY-C6



NKE6S-*.WOC



Design Criteria

The ruggedized RJ45 CAT6 connection system, provides solutions for high bandwidth data transfer in harsh and demanding environments. This series offers additional headroom for high performance Fast Ethernet 100BaseT and Gigabit Ethernet 1000BaseT connectivity in audio, lighting, live stage and industrial environments and even guarantees to be prepared for future 10 Gbit applications (true CAT6). The etherCON CAT6 series offers a D-shape panel connector with metal housing and secure latching system. Tool-free IDC termination makes cable assembly easy and fast. The preassembled CAT6 patch cables use a shielded S/FTP cable with cable plug carrier offering a robust metal shell and Push-Pull locking system. Integrated sealing rings make the system dust and waterproof to IP 65 rating.

Features & Benefits:

- CAT6 performance – fast data transmission and high bandwidth applications
- CAT6 specifications according TIA / EIA 568B, ISO / IEC 11801, EN 50173
- Shielded system - high noise immunity and EMI protection
- Push Pull mating - secure and proven locking system
- D-shape metal panel connector
- Ground lead jumper on panel connector with selectable grounding option
- IDC termination without tool
- Ready made patch cables with rugged cable carrier and unique chuck-type strain relief
- Dust and waterproof according IP 65

Technical Data

Electrical	Receptacle	Patch cable	Materials	Receptacle	Patch cable
Number of contacts	8	8	Housing	Zinc diecast	Zinc diecast
Rated current per contact	1.5 A	1.5 A	Adapter	Polyamide PA 6	Polyamide PA 6
TIA / EIA rating	CAT6	CAT6	Strain relief clamp	-	POM
Input to output resistance	< 200 mΩ	< 200 mΩ	Contacts	Bronze CuSn	Bronze CuSn
Insulation resistance	> 500 MΩ	> 500 MΩ	Contact surface	Gold	Gold
Dielectric strength	1 kV dc	1 kV dc	Bushing	-	PU / PA
NEXT (250 MHz)	48.7 dB	48.7 dB			
Attenuation (250 MHz)	0.1 dB				

Mechanical	Environmental
Retention method	Push-Pull
Life time (mating cycles)	> 1'000
Wire size	0.5 - 0.65 mm (AWG 24 - AWG 22)
Stranded wire	AWG 26/7 - 22/7
	Operating temperature
	-10°C to +60°C
	Storage temperature
	-40°C to +70°C
	Flammability
	UL94HB
	Protection class
	IP 65

Ordering Information

Patch Cable

NKE6S-*	Standard lengths: 0.5, 1, 2, 3, 5, 10, 30 m
NKE6S-*-WOC	Equipped on one side with metal shell, standard lengths: 1, 2, 3, 5, 10, 30 m
	Custom length in meter steps on request.

Receptacle

NE8FDY-C6	etherCON CAT6 with Nickel D-shell
NE8FDY-C6-B	etherCON CAT6 with Black Chrome D-shell

Accessories

Accessories see page 89 / 93

勝特力材料 886-3-5753170
 勝特力电子(上海) 86-21-34970699
 勝特力电子(深圳) 86-755-83298787
[Http://www.100y.com.tw](http://www.100y.com.tw)