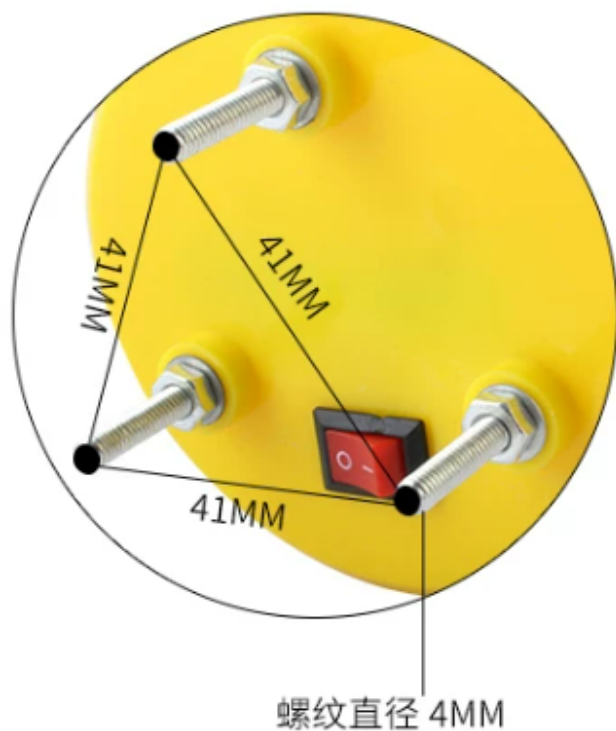
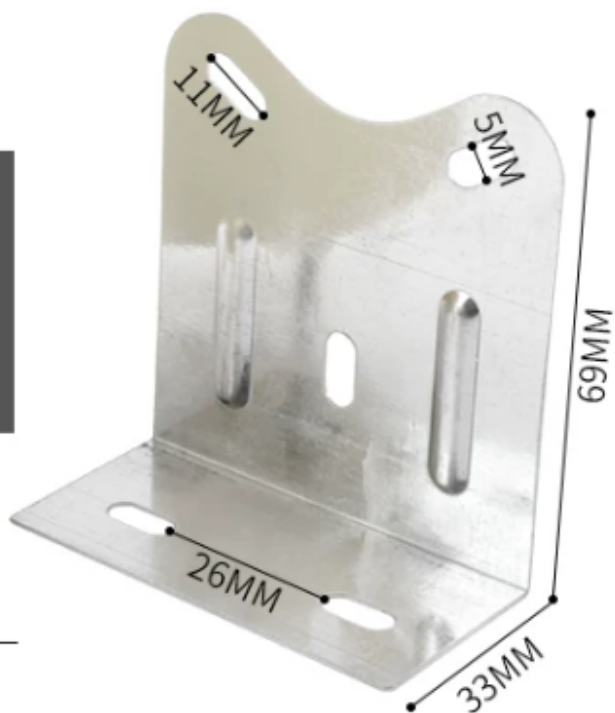


太阳能警示灯频闪信号灯交通施工路障灯夜间户外防盗船用闪烁灯

TB01螺纹款

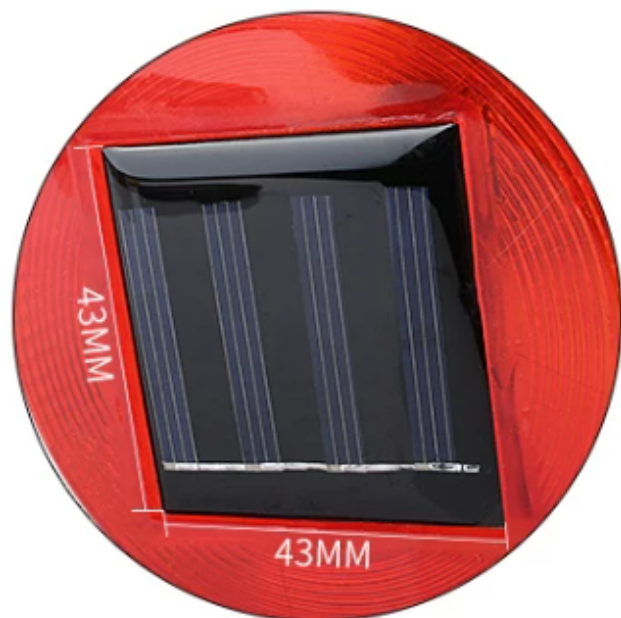
底部3根螺丝固定

- 1.在施工围挡上或墙上打3个孔
 - 2.使用产品自带的螺丝固定
- 配送支架



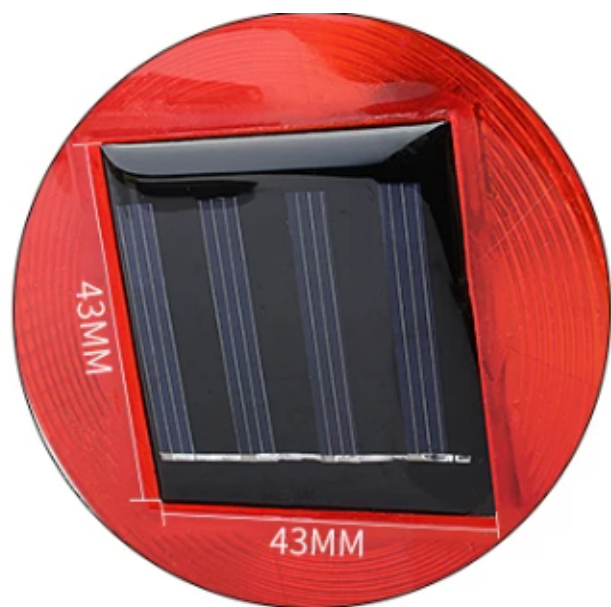
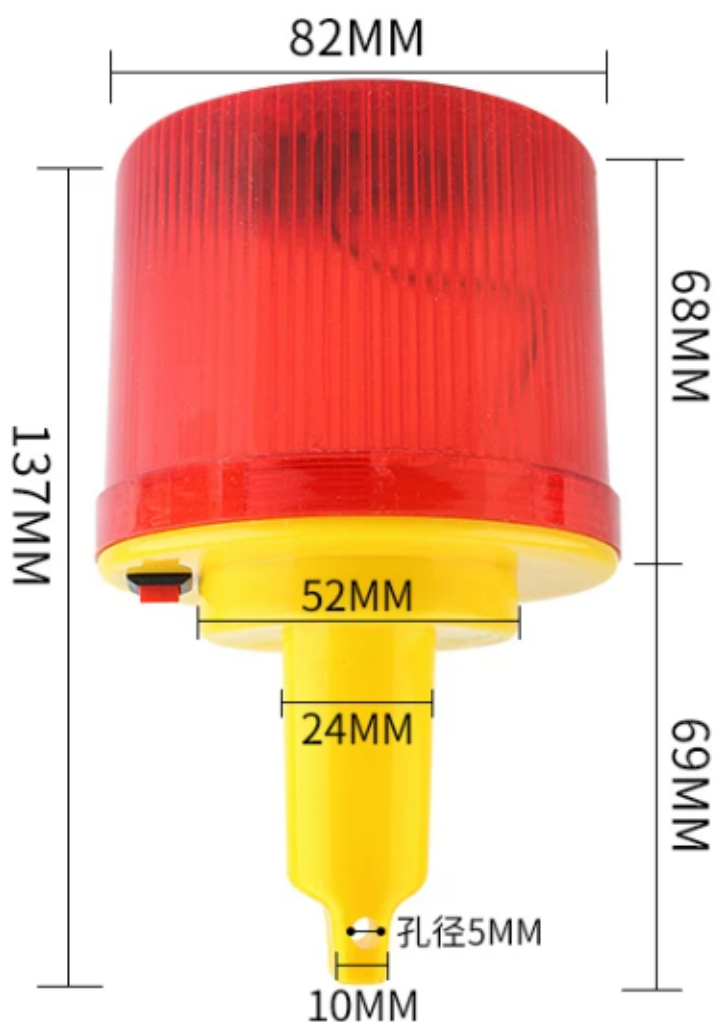
TB02卡扣款

- 1.套在2寸左右的钢管上
- 2.拧紧螺丝



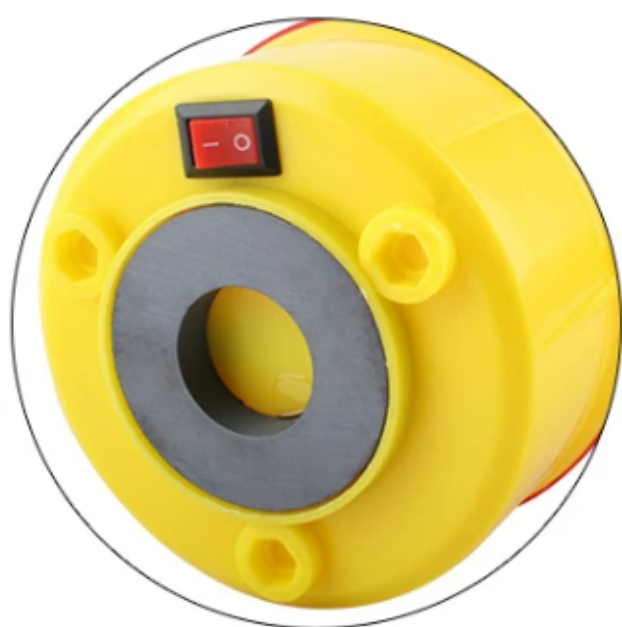
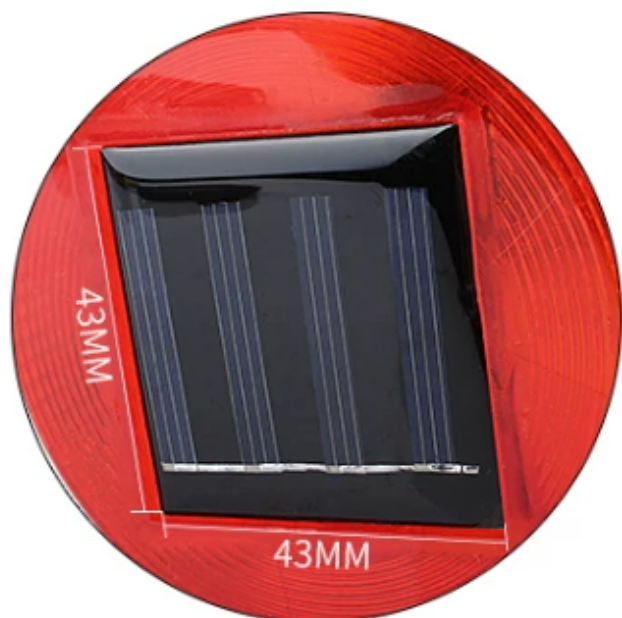
TB03插入式1

插入式 插销直径24MM
1.插在铁锥 警示柱等
2.用铁钎穿过小孔 并掰开固定



TB04磁铁款

底部磁铁吸附
铁质材质上可直接吸附安装



TB05加粗插入式款

插入式 插销直径38MM

- 1.插在铁锥 警示柱等
- 2.用铁钎穿过小孔 并掰开固定

