

Telpower® DC Power Distribution Fuses

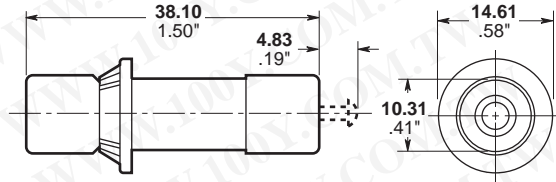
170 Volts, DC, 3-50 Amps

TPA



勝特力材料 886-3-5753170
 勝特力电子(上海) 86-21-34970699
 勝特力电子(深圳) 86-755-83298787
 Http://www.100y.com.tw

Dimensional Data – TPA Fuses



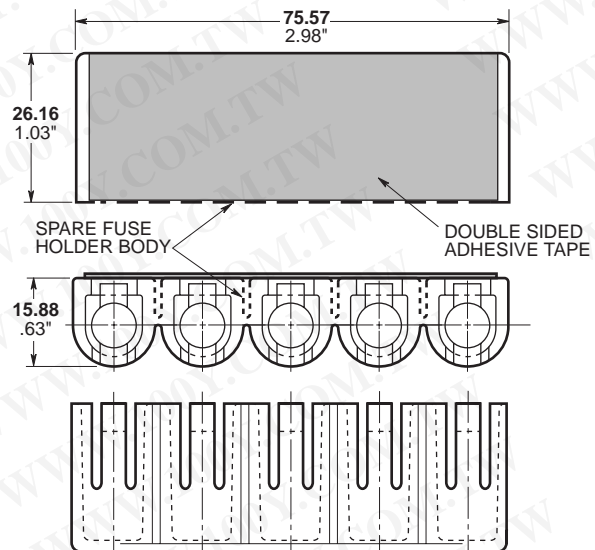
CATALOG SYMBOL: TPA and TPA-B
 DC POWER DISTRIBUTION FUSES
 AMPERE RATING: 3-50 Amps
 VOLTAGE RATING: TPA - 170 VOLTS DC; TPA-B - 65V DC
 INTERRUPTING RATINGS: TPA, 100 kA; TPA-B, 20kA
 CONSTRUCTION:
 • SILVER-PLATED BRASS FERRULES AND INDICATOR PIN.
 • GLASS MELAMINE TUBE.
 AGENCY APPROVALS:
 U.L. RECOGNIZED (GUIDE # JFHR2, FILE E56412)
 CSA CERTIFIED, CLASS 1422-30, FILE 53787

- Recognized branch circuit protection.
- Current-limiting capability.
- Complete system coordination capability.
- Use with Telpower **TP15914** and **TP15900-4** Disconnect Switches.
- Five position spare fuseholder available – **Part No. 5TPH.**

Catalog Numbers

TPA-3	TPA-25	TPA-B-20
TPA-5	TPA-30	TPA-B-25
TPA-10	TPA-40	
TPA-15	TPA-50	
TPA-20		

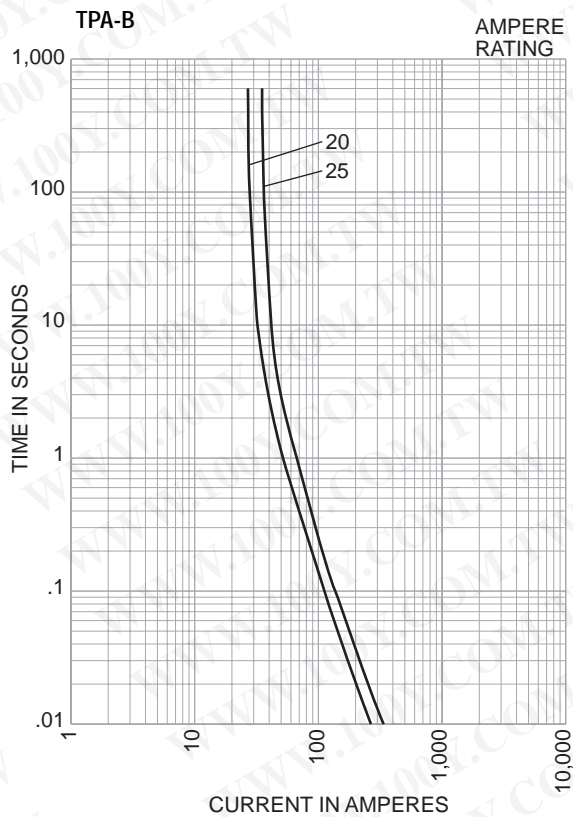
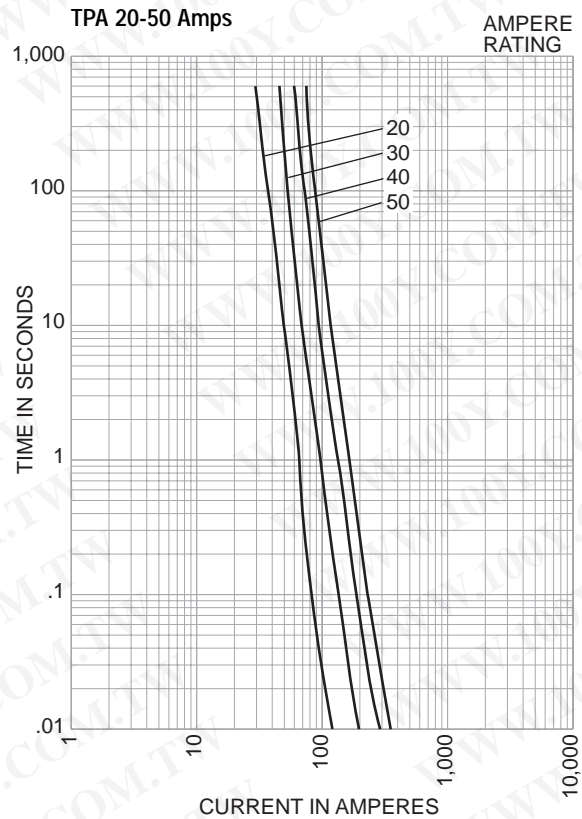
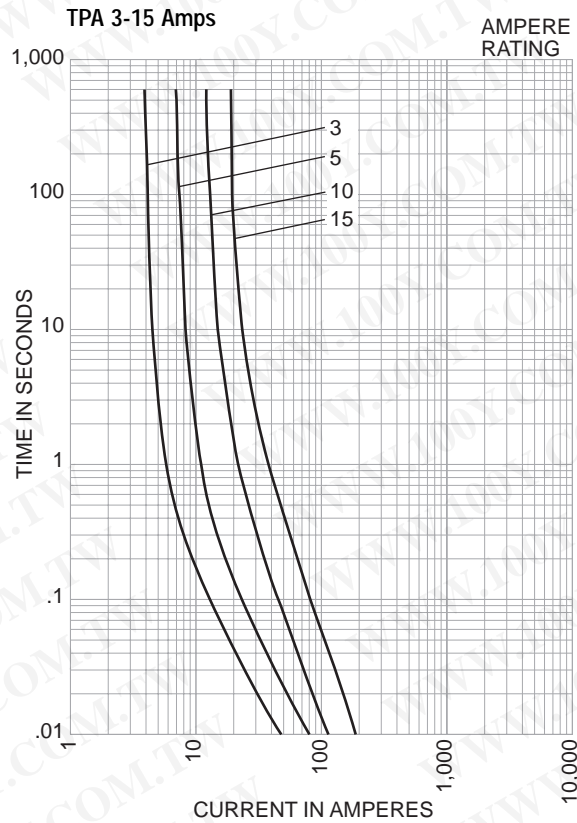
Five Position Spare Fuseholder – 5TPH



Telpower® DC Power Distribution Fuses

170 Volts DC, 3-50 Amps

TPA



勝特力材料 886-3-5753170
 勝特力电子(上海) 86-21-34970699
 勝特力电子(深圳) 86-755-83298787
[Http://www.100y.com.tw](http://www.100y.com.tw)

The only controlled copy of this BIF document is the electronic read-only version located on the Bussmann Network Drive. All other copies of this BIF document are by definition uncontrolled. This bulletin is intended to clearly present comprehensive product data and provide technical information that will help the end user with design applications. Bussmann reserves the right, without notice, to change design or construction of any products and to discontinue or limit distribution of any products. Bussmann also reserves the right to change or update, without notice, any technical information contained in this bulletin. Once a product has been selected, it should be tested by the user in all possible applications.