

# Specification Guide Codes:

**A** = Item Number  
**B** = Rated Current

**C** = Insulation Resistance At 500 V DC

**D** = Contact Resistance

**E** = Dielectric Strength For 60 Seconds

- **Insulating Body** : Flame Retarding UL 94 V0 Thermoplastic Material.
- **Contact** : Nickel or Tin Plated Copper Alloy.

## PANEL MOUNT FUSE HOLDER FOR 5x20mm FUSES

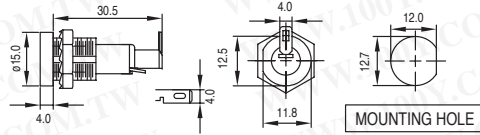


### CQ-206D

RoHS

**B**: 10A 250V.  
**C**: 100MΩ Min  
**D**: 5mΩ At 1A DC  
**E**: AC1500V Min.

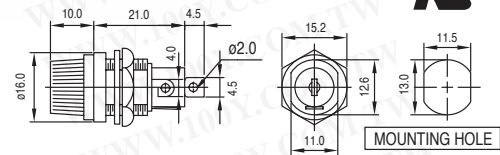
**Bayonet Knob**  
**Approvals:**



### CQ-206H

**B**: 10A 250V.  
**C**: 100MΩ Min  
**D**: 5mΩ At 1A DC  
**E**: AC1500V Min.

**Screw Knob**  
**Approvals:**

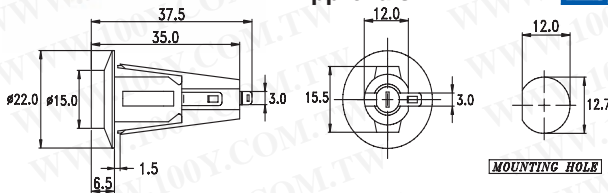


### CQ-206F

RoHS

**B**: 6.3A 250V.  
**C**: 100MΩ Min  
**D**: 5mΩ At 1A DC  
**E**: AC2000V Min.

**Screw Knob**  
**Approvals:**

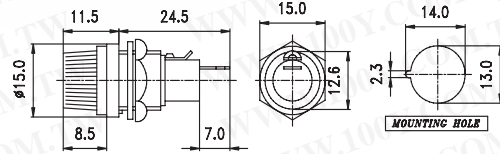


### CQ-206HU

RoHS

**B**: 10A 250V.  
**C**: 100MΩ Min  
**D**: 5mΩ At 1A DC  
**E**: AC2000V Min.

**Bayonet knob**  
**Approvals:**

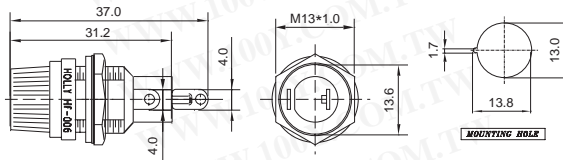


### CQ-206HHC

RoHS

**B**: 10A 250V.  
**C**: 100MΩ Min  
**D**: 5mΩ At 1A DC  
**E**: AC1500V Min.

**Screw Knob**

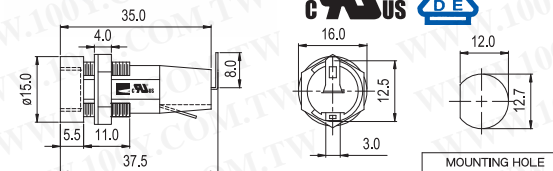


### CQ-206S

RoHS

**B**: 6.3A 250V.  
**C**: 100MΩ Min  
**D**: 5mΩ At 1A DC  
**E**: AC2000V Min.

**Screw Knob**  
**Approvals:**



### CQ-206M

RoHS

**B**: 6.3A 250V.  
**C**: 100MΩ Min  
**D**: 5mΩ At 1A DC  
**E**: AC2000V Min.

**Bayonet Knob**  
**Approvals:**

